



**TRILOBITE TESTING, INC.**

# DRILL STEM TEST REPORT

Becker Oil Corporation  
 Po Box 1150  
 Ponca City OK, 74602  
 ATTN: Clyde Becker

**36-23s-22w Hodgeman KS**  
**Winter Land Cattle 1**  
 Job Ticket: 55371 **DST#: 1**  
 Test Start: 2013.12.18 @ 14:52:00

## GENERAL INFORMATION:

Formation: **Marmaton**  
 Deviated: No Whipstock: ft (KB)  
 Time Tool Opened: 17:19:00  
 Time Test Ended: 23:22:00  
 Interval: **4310.00 ft (KB) To 4380.00 ft (KB) (TVD)**  
 Total Depth: 4380.00 ft (KB) (TVD)  
 Hole Diameter: 7.88 inches Hole Condition: Fair  
 Test Type: Conventional Bottom Hole (Initial)  
 Tester: Cody Bloedorn  
 Unit No: 73  
 Reference Elevations: 2304.00 ft (KB)  
 2294.00 ft (CF)  
 KB to GR/CF: 10.00 ft

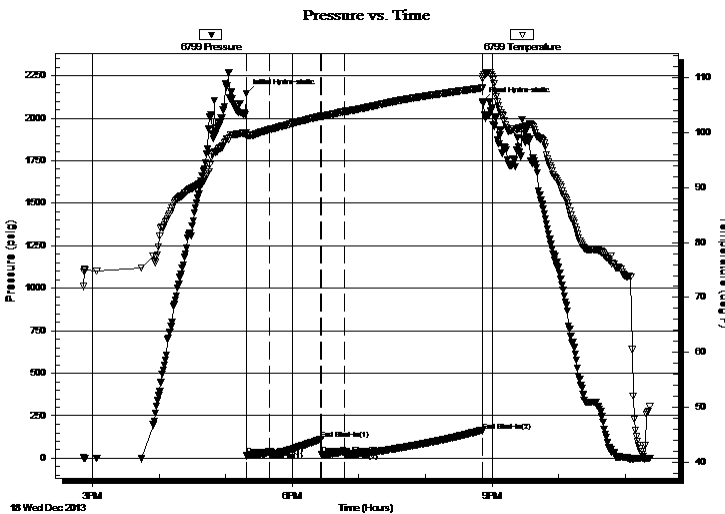
## Serial #: 6799

Inside

Press @ Run Depth: 38.16 psig @ 4314.00 ft (KB) Capacity: 8000.00 psig  
 Start Date: 2013.12.18 End Date: 2013.12.18 Last Calib.: 2013.12.18  
 Start Time: 14:52:05 End Time: 23:21:59 Time On Btm: 2013.12.18 @ 17:18:45  
 Time Off Btm: 2013.12.18 @ 20:51:30

TEST COMMENT: 25 - IF- 1" blow  
 45 - IS- No return  
 45 - FF- 3.75" blow  
 100 - FS- No return

## PRESSURE SUMMARY



Time (Min.)	Pressure (psig)	Temp (deg F)	Annotation
0	2146.16	100.01	Initial Hydro-static
1	15.41	99.41	Open To Flow (1)
21	40.26	100.57	Shut-In(1)
67	112.27	103.00	End Shut-In(1)
68	21.68	102.98	Open To Flow (2)
88	38.16	103.85	Shut-In(2)
213	161.46	108.11	End Shut-In(2)
213	2098.78	109.80	Final Hydro-static

## Recovery

Length (ft)	Description	Volume (bbl)
62.00	WM, 5%W, 95%M	0.30

## Gas Rates

Choke (inches)	Pressure (psig)	Gas Rate (Mcf/d)



**TRILOBITE  
TESTING, INC.**

# DRILL STEM TEST REPORT

**FLUID SUMMARY**

Becker Oil Corporation

**36-23s-22w Hodgeman KS**

Po Box 1150  
Ponca City OK, 74602

**Winter Land Cattle 1**

Job Ticket: 55371

**DST#: 1**

ATTN: Clyde Becker

Test Start: 2013.12.18 @ 14:52:00

## Mud and Cushion Information

Mud Type: Gel Chem

Cushion Type:

Oil API:

deg API

Mud Weight: 9.00 lb/gal

Cushion Length:

ft

Water Salinity:

ppm

Viscosity: 51.00 sec/qt

Cushion Volume:

bbbl

Water Loss: 16.79 in<sup>3</sup>

Gas Cushion Type:

Resistivity: ohm.m

Gas Cushion Pressure:

psig

Salinity: 4000.00 ppm

Filter Cake: 3.00 inches

## Recovery Information

Recovery Table

Length ft	Description	Volume bbl
62.00	WM, 5%W, 95%M	0.305

Total Length: 62.00 ft      Total Volume: 0.305 bbl

Num Fluid Samples: 0

Num Gas Bombs: 0

Serial #:

Laboratory Name:

Laboratory Location:

Recovery Comments:

Serial #: 6799

Inside

Becker Oil Corporation

Winter Land Cattle 1

DST Test Number: 1

