

LINN OPERATING INC. SULLIVAN A-4 ATU-59

180' FSL
 200' FWL
 SW/4 OF SW/4 OF SW/4 OF SW/4 OF
 SECTION 7, T-30-S, R-38-W
 LATITUDE: 37°26'48.68230" N
 LONGITUDE: 101°31'29.03114" W
 GROUND ELEVATION: 3146.6'



Keller
 Surveying &
 Mapping

2330 B LAKEVIEW DRIVE
 AMARILLO, TEXAS 79109
 PH: (804)418-6263

DRAWN BY: JJK
 APPROVED BY: JJK
 SCALE: 1" = 200'
 DATE: 1/28/14



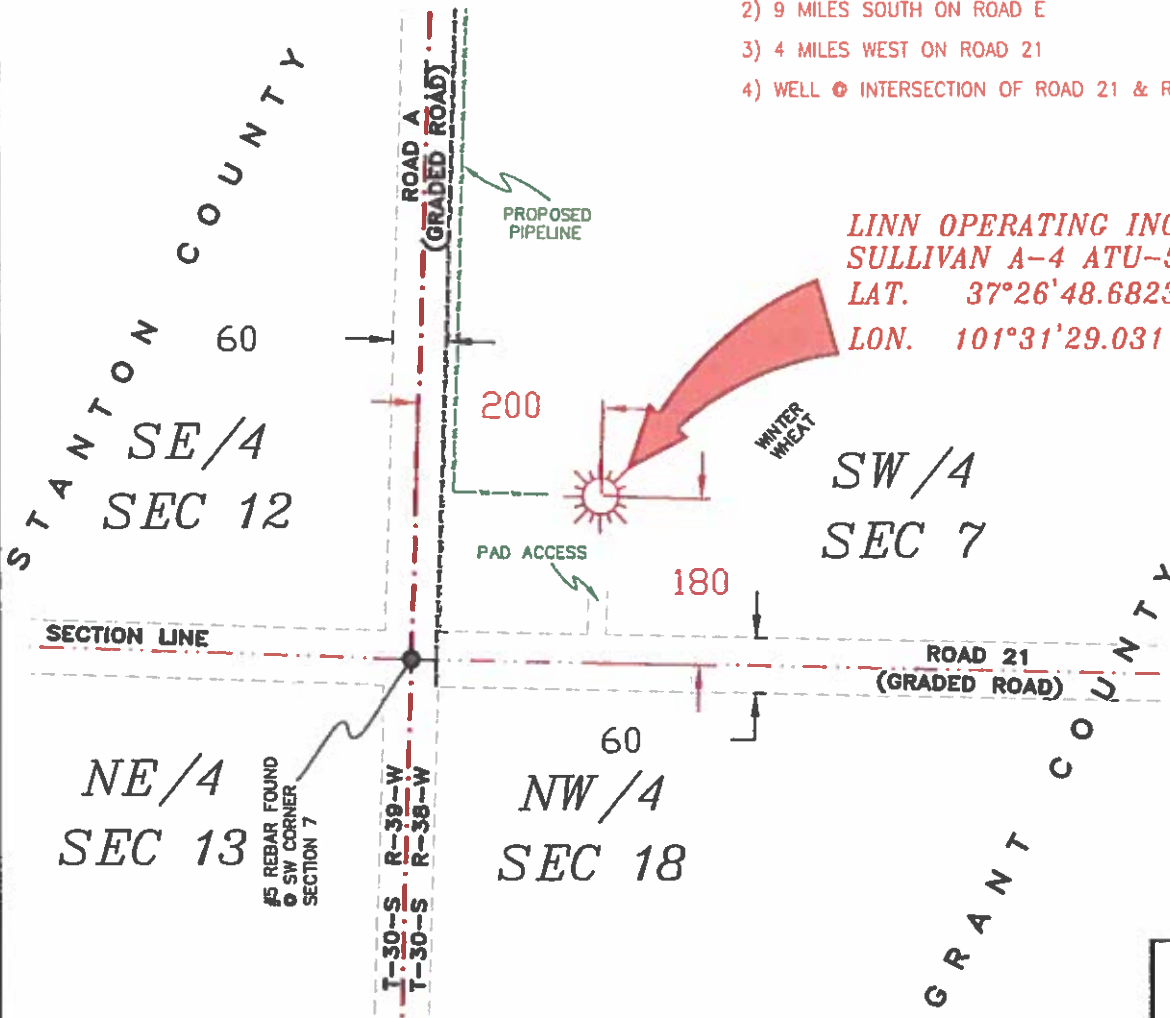
2225 W. OKLAHOMA AVE.
 ULYSSES KANSAS 67880
 PH: (620)356-6940
 FAX: (620)356-6950

DRIVING DIRECTIONS:

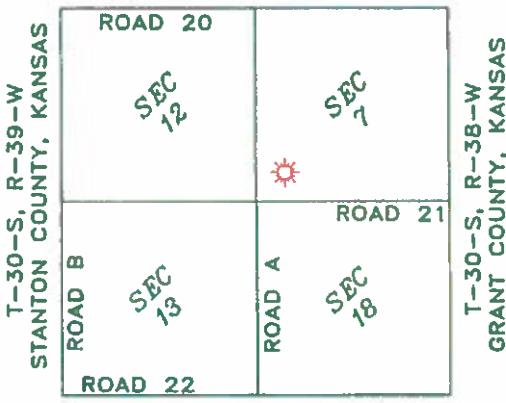
- BEGINNING AT INTERSECTION OF US HWY 160 & HWY 25
- 1) 5 MILES WEST ON HWY 160 TO ROAD E
 - 2) 9 MILES SOUTH ON ROAD E
 - 3) 4 MILES WEST ON ROAD 21
 - 4) WELL @ INTERSECTION OF ROAD 21 & ROAD A



LINN OPERATING INC.
SULLIVAN A-4 ATU-59
 LAT. 37°26'48.68230"
 LON. 101°31'29.03114"



- NOTES:**
- 1) THIS PLAN DOES NOT REPRESENT A TRUE BOUNDARY SURVEY. THE FOOTINGS AND TIES SHOWN ARE FROM LINES OF OCCUPATION WHICH MAY NOT BE ACTUAL PROPERTY LINES.
 - 2) CONTRACTOR TO CONTACT ONE-CALL FOR FOREIGN UTILITY LOCATIONS PRIOR TO ANY EXCAVATION OR CONSTRUCTION.
 - 3) WNO 27 UPL-DWG



JOHN DAVID KELLER, L.S. NO. 1518

LINN OPERATING INC.
SULLIVAN A-4 ATU-59
 SECTIONS 7 & 18, 12 & 13,
 T-30-S, R-38 & 39-W,
 STANTON & GRANT COUNTIES,
 KANSAS

PLAT AND CERTIFICATION OF ACREAGE ATTRIBUTABLE TO A GAS WELL

Kansas Corporation Commission, Conservation Division
 Finney State Office Building, 130 South Market, Room 2078
 Wichita, Kansas 67202

API NUMBER 15- _____

LOCATION OF WELL: COUNTY Stanton

OPERATOR LINN Operating, Inc.

180 S feet from south/north line of section

LEASE Sullivan

200 W feet from east / west line of section

WELL NUMBER A-4 ATU-59

FIELD Hugoton-Panoma

NUMBER OF ACRES ATTRIBUTABLE TO WELL 640

QTR/QTR/QTR OF ACREAGE SW - SW - SW

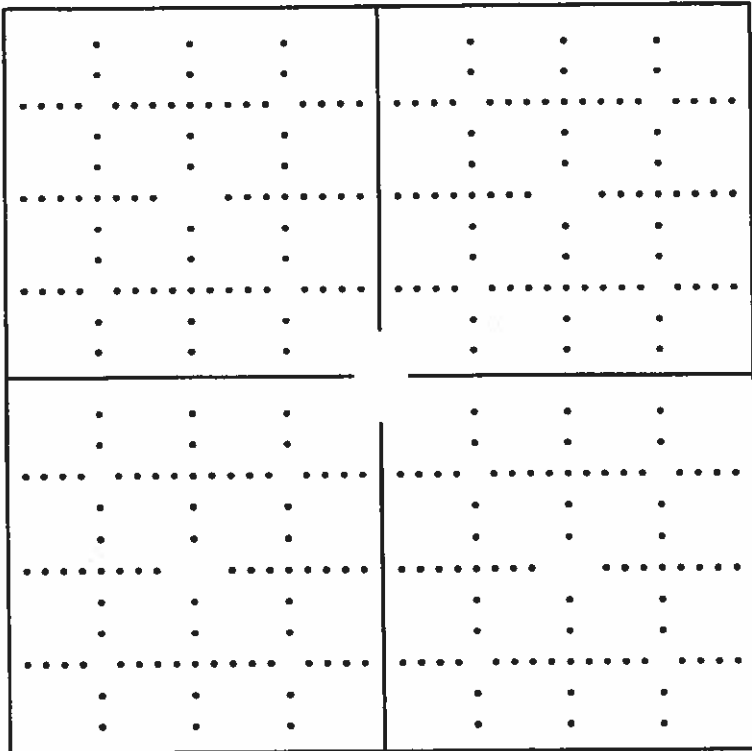
SECTION 7 TWP 30 (S) RG 38W E/W

IS SECTION X REGULAR or _____ IRREGULAR

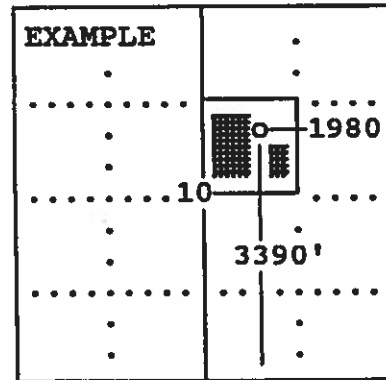
IF SECTION IS IRREGULAR, LOCATE WELL FROM
 NEAREST CORNER BOUNDARY. (check line below)

Section corner used: NE NW SE SW

(Show the location of the well and shade attributable acreage for prorated or spaced wells).
 (Show the footage to the nearest lease or unit boundary line; and show footage to the nearest
 common source supply well).



*See attached
map*



SEWARD CO.

The undersigned hereby certifies as Regulatory Compliance Advisor (title) for
LINN Operating, Inc. (Co.), a duly authorized agent, that all

information shown hereon is true and correct to the best of my knowledge and belief, that all
 acreage claimed attributable to the well named herein is held by production from that well
 and hereby make application for an allowable to be assigned to the well upon the filing of
 this form and the State test, whichever is later.

Signature *Mandy Poter*

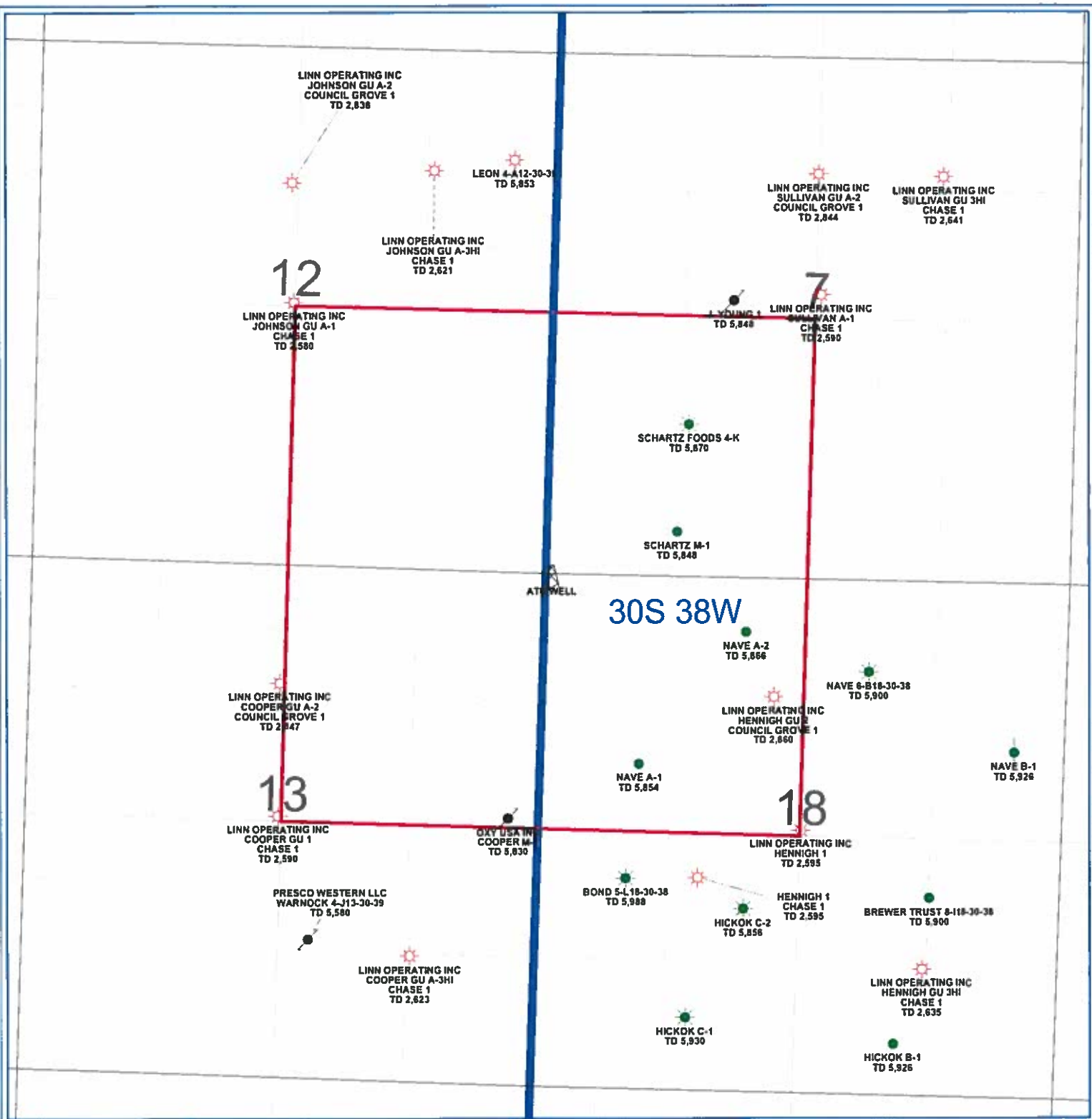
Subscribed and sworn to before me on this 15th day of April, 19 2014

My Commission expires _____



Mandy Poter
 Notary Public

FORM CG-8 (12/94)



PETRA 12/10/2012 11:59:34 AM

LINN OPERATING INC	
KANSAS HUGOTON	
ATU LOCATION	
Sec 18 - 30S - 38W Grant Co.	
WELL SYMBOLS ATU Well Location Gas Well Oil and Gas Well Oil Well Plugged and Abandoned Suspended Oil Well	