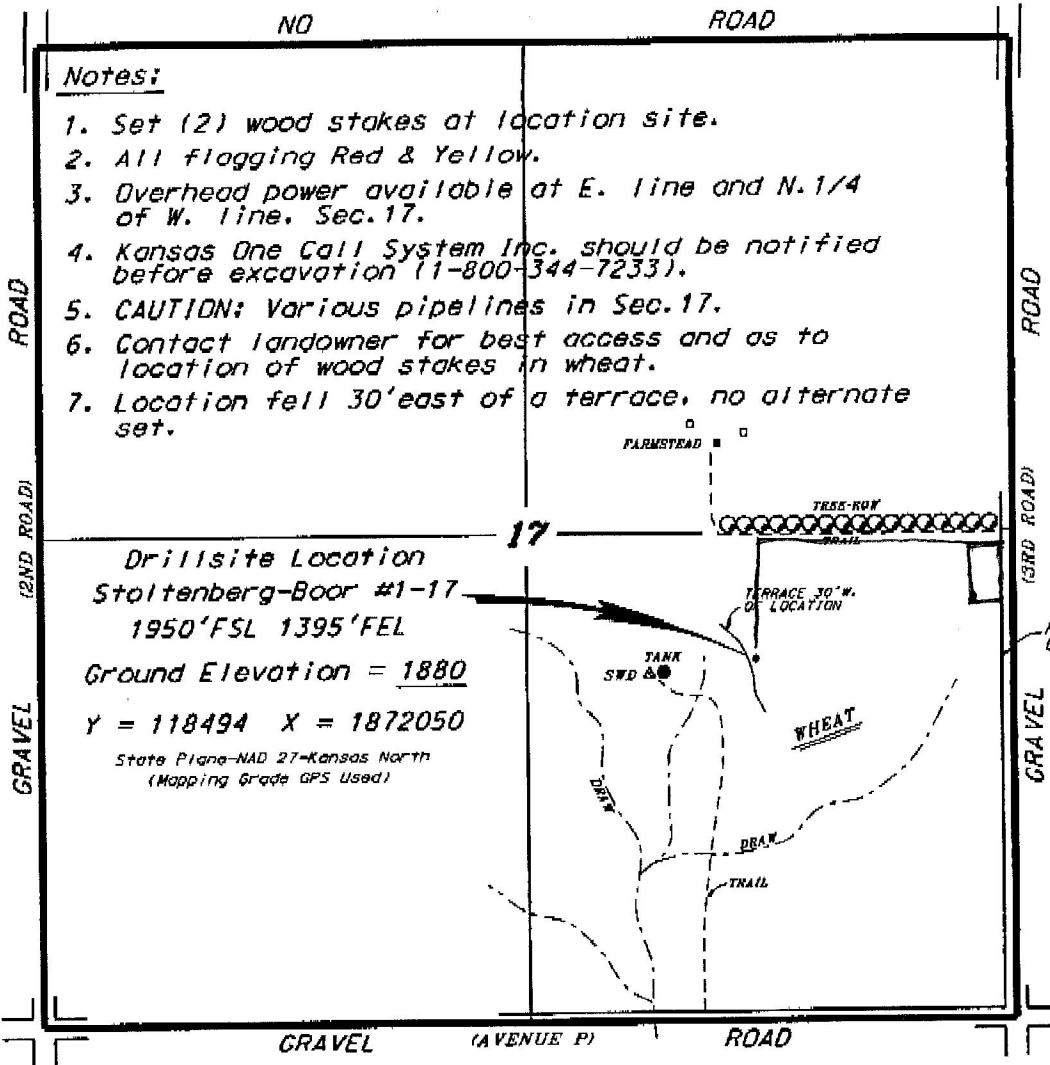


**BIRD DOG OIL, LLC
STOLTENBERG-BOOR LEASE
SE.1/4, SECTION 17, T16S, R10W
ELLSWORTH COUNTY, KANSAS**

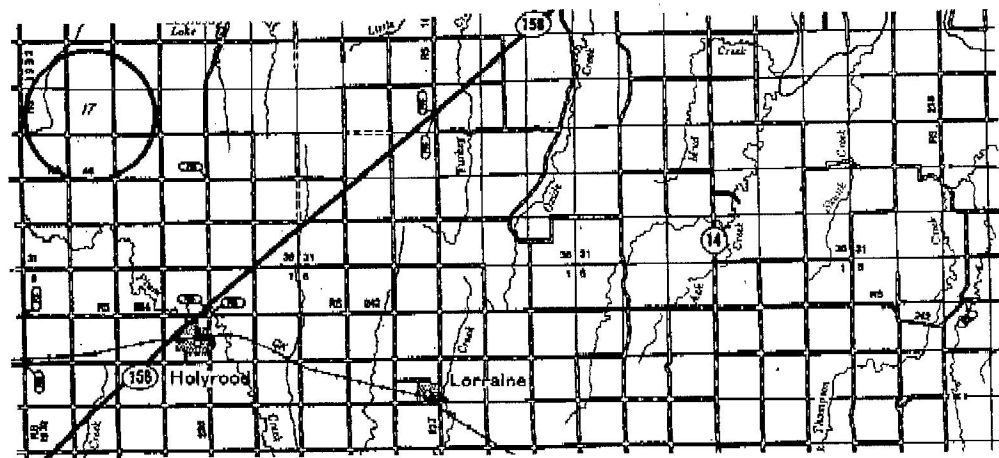
Notes:

1. Set (2) wood stakes at location site.
2. All flogging Red & Yellow.
3. Overhead power available at E. line and N.1/4 of W. line, Sec.17.
4. Kansas One Call System Inc. should be notified before excavation (1-800-344-7233).
5. CAUTION: Various pipelines in Sec.17.
6. Contact landowner for best access and as to location of wood stakes in wheat.
7. Location fell 30' east of a terrace, no alternate set.

*Ingress and egress to location as shown on this plat is for usage only and may not be legally opened for public use. Contact landowner, tenant and county road department for access.



**Drillsite Location
Stoltenberg-Boor #1-17
1950'FSL 1395'FEL
Ground Elevation = 1880
Y = 118494 X = 1872050
State Plane-NAD 27-Kansas North
(Mapping Grade GPS Used)**



* Controlling data is based upon the best maps and photographs available to us and upon a regular section of land containing 240 acres.
 * Approximate section lines were determined using the normal standard of care of oilfield surveyors practicing in the state of Kansas. The section corners, which establish the precise section lines, were not necessarily located, and the exact location of the drillsite location in the section is not guaranteed. Therefore, the debtor, by securing this service and accepting this plat and all other parties relying thereon agree to hold Central Kansas Oilfield Services, Inc., its officers and employees harmless from all losses, costs and expenses and said entities released from any liability from incidental or consequential damages.
 * Elevations derived from National Geodetic Vertical Datum.

Date April 8, 2014