



**TRILOBITE  
TESTING, INC.**

# DRILL STEM TEST REPORT

Vincent Oil Corporation

**27-28S-23W Ford**

155 N Market Ste 700  
Wichita, KS 67202

**Hawes Ranch 3-27**

ATTN: Jim Hall

Job Ticket: 51920

**DST#: 4**

Test Start: 2014.01.17 @ 14:20:10

## GENERAL INFORMATION:

Formation: **Mississippi**

Deviated: No Whipstock: ft (KB)

Time Tool Opened: 16:27:25

Time Test Ended: 22:26:55

Test Type: Conventional Bottom Hole (Reset)

Tester: Leal Cason

Unit No: 74

**Interval: 5197.00 ft (KB) To 5245.00 ft (KB) (TVD)**

Reference Elevations: 2514.00 ft (KB)

Total Depth: 5245.00 ft (KB) (TVD)

2503.00 ft (CF)

Hole Diameter: 7.88 inches Hole Condition: Good

KB to GR/CF: 11.00 ft

**Serial #: 6798**

**Inside**

Press @ Run Depth: 24.82 psig @ 5198.00 ft (KB)

Capacity: 8000.00 psig

Start Date: 2014.01.17

End Date:

2014.01.17

Last Calib.:

2014.01.17

Start Time: 14:20:11

End Time:

22:26:55

Time On Btm:

2014.01.17 @ 16:20:55

Time Off Btm:

2014.01.17 @ 20:22:40

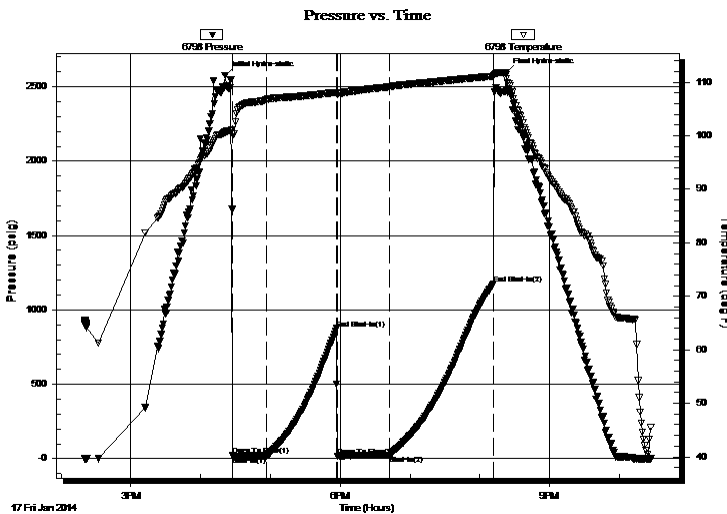
**TEST COMMENT:** IF: Weak Blow , Built to 7 inches

IS: No Blow Back

FF: Strong Blow , BOB in 90 seconds

FS: No Blow Back

## PRESSURE SUMMARY



Time (Min.)	Pressure (psig)	Temp (deg F)	Annotation
0	2575.17	100.63	Initial Hydro-static
7	20.39	100.40	Open To Flow (1)
36	20.15	106.78	Shut-In(1)
96	874.06	108.10	End Shut-In(1)
97	17.11	107.76	Open To Flow (2)
142	24.82	109.14	Shut-In(2)
231	1173.89	111.13	End Shut-In(2)
242	2596.22	111.36	Final Hydro-static

## Recovery

Length (ft)	Description	Volume (bbl)
30.00	SOCM 2%O 98%M	0.42

\* Recovery from multiple tests

## Gas Rates

	Choke (inches)	Pressure (psig)	Gas Rate (Mcf/d)



**TRILOBITE  
TESTING, INC.**

# DRILL STEM TEST REPORT

**FLUID SUMMARY**

Vincent Oil Corporation

**27-28S-23W Ford**

155 N Market Ste 700  
Wichita, KS 67202

**Hawes Ranch 3-27**

Job Ticket: 51920

**DST#: 4**

ATTN: Jim Hall

Test Start: 2014.01.17 @ 14:20:10

## Mud and Cushion Information

Mud Type: Gel Chem

Cushion Type:

Oil API:

deg API

Mud Weight: 9.00 lb/gal

Cushion Length:

ft

Water Salinity:

ppm

Viscosity: 50.00 sec/qt

Cushion Volume:

bbbl

Water Loss: 7.99 in<sup>3</sup>

Gas Cushion Type:

Resistivity: ohm.m

Gas Cushion Pressure:

psig

Salinity: 9100.00 ppm

Filter Cake: 0.02 inches

## Recovery Information

Recovery Table

Length ft	Description	Volume bbl
30.00	SOCM 2%O 98%M	0.421

Total Length: 30.00 ft      Total Volume: 0.421 bbl

Num Fluid Samples: 0

Num Gas Bombs: 0

Serial #:

Laboratory Name:

Laboratory Location:

Recovery Comments:

Serial #: 6798

Inside

Vincent Oil Corporation

Hawes Ranch 3-27

DST Test Number: 4

