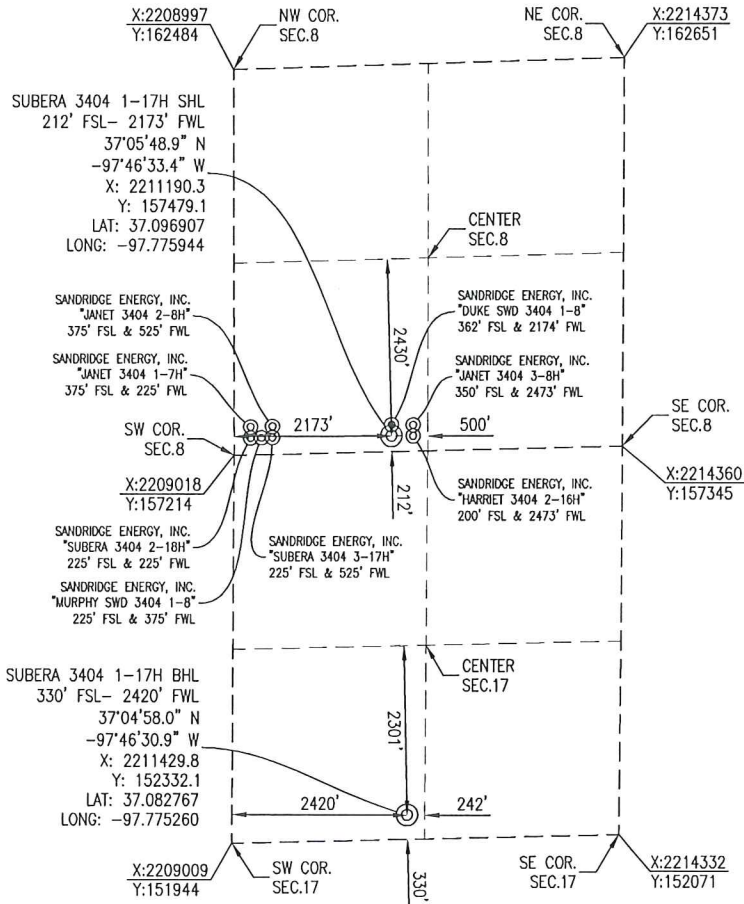




SUMNER COUNTY, KANSAS
 212' FSL- 2173' FWL SECTION 8 TOWNSHIP 34S RANGE 04W 6TH P.M.



BOTTOM HOLE INFORMATION PROVIDED BY OPERATOR LISTED AND CORNER COORDINATES ARE TAKEN FROM POINTS SURVEYED IN THE FIELD.



ELEVATION:
 1243' GR. AT STAKE

OPERATOR: SANDRIDGE ENERGY, INC. **WELL NO:** 1-17H

LEASE NAME: SUBERA 3404

TOPOGRAPHIC & VEGETATION: LOCATION FELL IN A FIELD

GOOD DRILL SITE: YES **REFERENCE STAKES OR ALTERNATE LOCATION STAKES SET:** NONE

BEST ACCESSIBILITY TO LOCATION: SOUTH OR WEST LINE

DISTANCE & DIRECTION FROM HWY JCT OR TOWN: FROM THE JCT. OF KS-44 & S BLACKSTONE RD, TRAVEL SOUTH ON S BLACKSTONE RD FOR ±4.0 MILES TO THE SOUTHWEST CORNER OF SECTION 8, T-34S-R04W.



(THE FOLLOWING INFORMATION WAS GATHERED USING A GPS RECEIVER ACCURACY ±2-3 METERS)

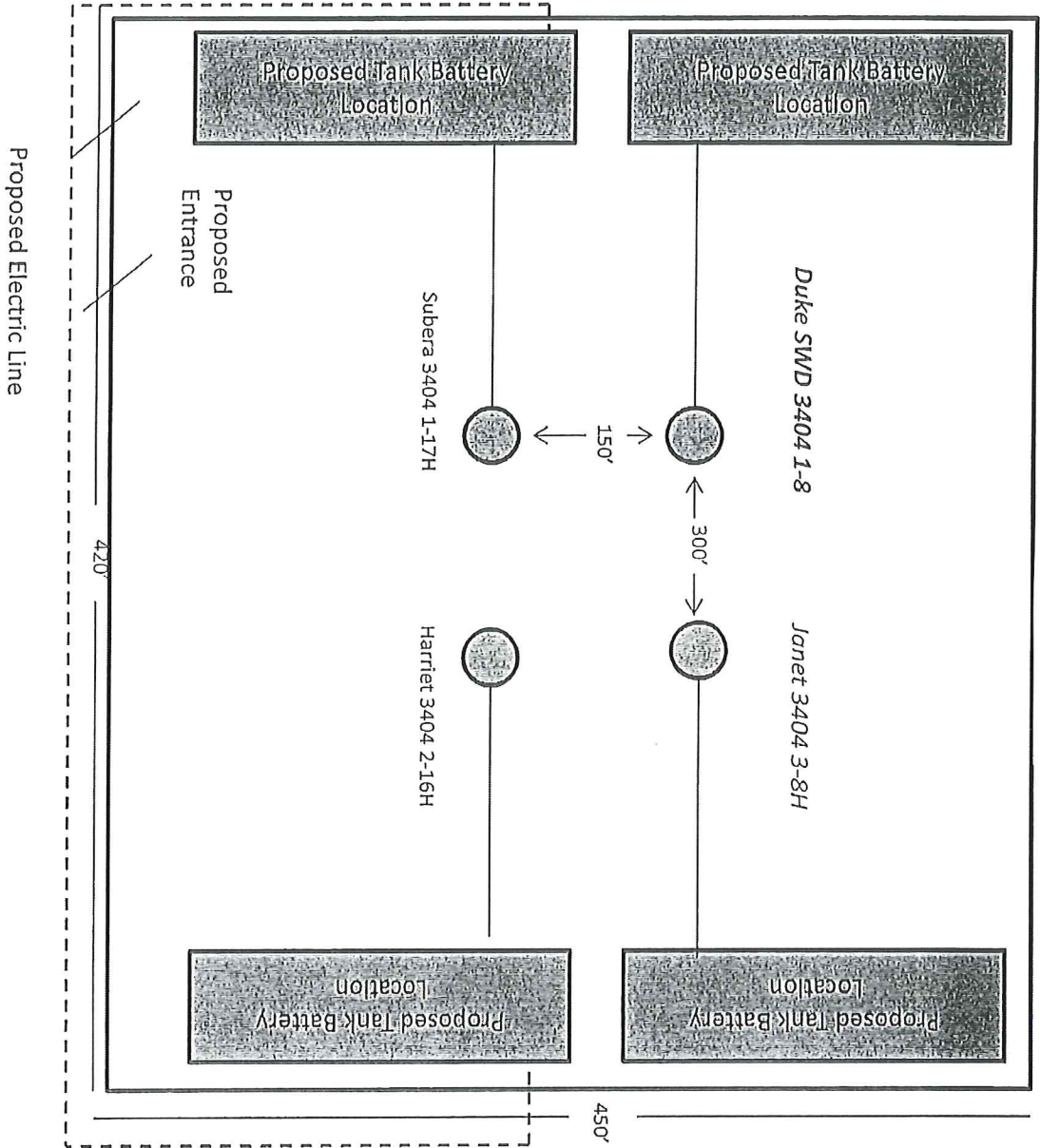
GPS DATUM: NAD-27
LAT: 37.096907
LONG: -97.775944

STATE PLANE COORDINATES:
ZONE: KS-SOUTH NAD-27
X: 2211190.3
Y: 157479.1

GENERAL NOTES:
 THE TIES AND FOOTAGES SHOWN ON THIS PLAT ARE FROM LINES OF OCCUPATION FROM A SURVEY MADE ON THE GROUND AND / OR BEARING AND DISTANCES FROM THE GENERAL LAND OFFICE PLAT OF THE AREA SHOWN AND MAY NOT BE THE ACTUAL PROPERTY CORNERS. THIS PLAT DOES NOT REPRESENT A TRUE BOUNDARY SURVEY. DRILL SITE CONDITION DETERMINATIONS WERE MADE BY SANDRIDGE ENERGY INC. REPRESENTATIVES.



REVISION	SandRidge
	"SUBERA 3404 1-17H" PART OF THE SW 1/4 OF SECTION 8, T-34-S, R-04-W PROPOSED DRILL SITE SUMNER COUNTY, KANSAS
	SCALE: 1" = 2000'
	PLOT DATE: 03-27-2014
	DRAWN BY: MF
	SHEET NO.: 1 OF 4



Subera 3404 1-17H

Sumner County

Unit Description:

W/2 of 17-34S-4W

E/2 of 18-34S-4W

Surface Owner:

SandRidge Exploration and Production, LLC

123 Robert S Kerr Ave

Oklahoma City, OK 73102

