



Fall & Associates

Stake and Elevation Service

719 W. 5th Street

P.O. Box 484

Concordia, KS. 66001

1-800-538-2021

Date 4-17-14

Invoice Number 0414141

FORESTAR PETROLEUM CORP.

1-18

Weichapl

Operation

Number

Farm Name

Rawlins-KS

18

2s

31w

1100'FSL 1600'FEI

County-State

S

T

R

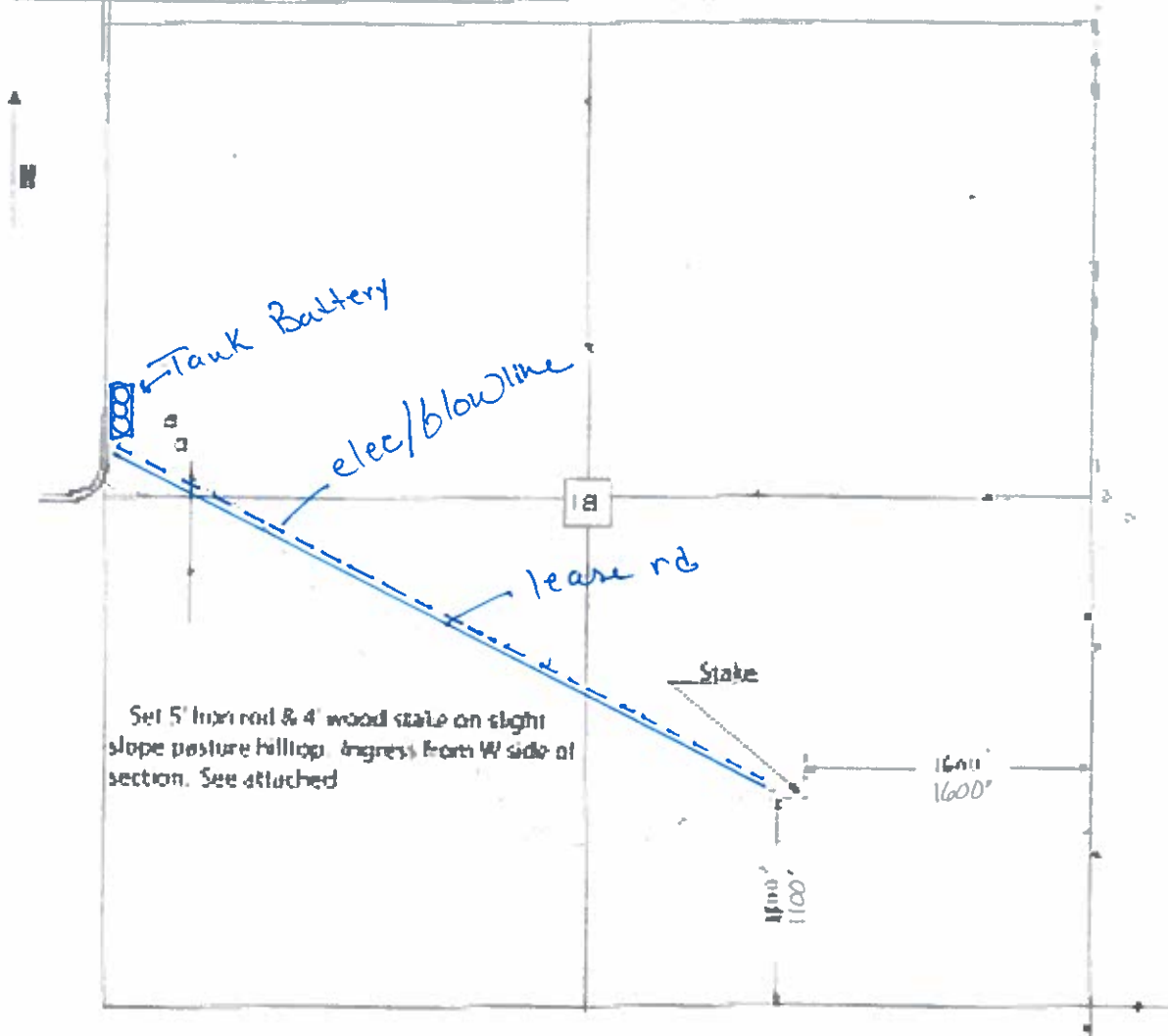
Location

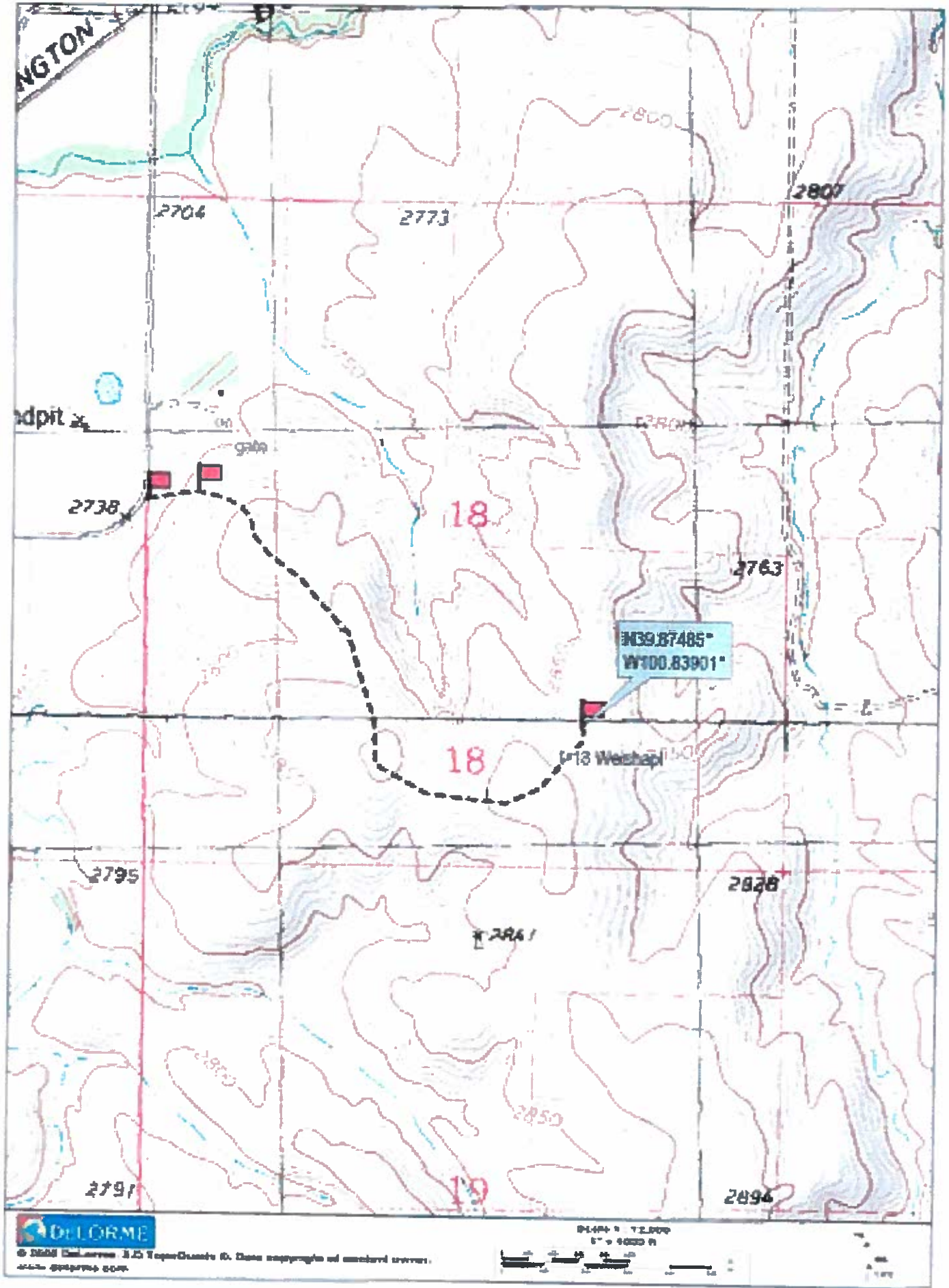
Forestar Petroleum Corp.
1801 Broadway
Suite 600
Denver, CO. 80202

Elevation 2884 Gr. 2884

Ordered By: Justin

Scale 1"=100'





NGTON

2704

2773

2807

adpit x

2738

18

$N39.87485^\circ$
 $W100.83901^\circ$

2763

13 Weishapi

18

2795

2828

2861

2791

19

2894



© 2008 Delorme, Inc. All Rights Reserved. Data copyright of several owners.

