



DRILL STEM TEST REPORT

Prepared For: **FG Holl Company LLC**

9431 East Central
Suite 100
Wichita, Kansas 67206+2563

ATTN: Ryan Greenbaum

Foster Trust A #1-1

1/21S/16W/Pawnee

Start Date: 2014.04.03 @ 21:17:00

End Date: 2014.04.04 @ 04:20:00

Job Ticket #: 18271 DST #: 2

Superior Testers Enterprises LLC
PO Box 138 Great Bend KS 67530
1-800-792-6902

Printed: 2014.04.04 @ 04:48:46



DRILL STEM TEST REPORT

TOOL DIAGRAM

FG Holl Company LLC

1/21S/16W/Pawnee

9431 East Central
Suite 100
Wichita, Kansas 67206+2563
ATTN: Ryan Greenbaum

Foster Trust A #1-1

Job Ticket: 18271

DST#: 2

Test Start: 2014.04.03 @ 21:17:00

Tool Information

Drill Pipe:	Length: 3749.00 ft	Diameter: 3.80 inches	Volume: 52.59 bbl	Tool Weight: 2000.00 lb
Heavy Wt. Pipe:	Length: 0.00 ft	Diameter: 0.00 inches	Volume: 0.00 bbl	Weight set on Packer: 20000.00 lb
Drill Collar:	Length: 0.00 ft	Diameter: 0.00 inches	Volume: 0.00 bbl	Weight to Pull Loose: 75000.00 lb
			<u>Total Volume: 52.59 bbl</u>	Tool Chased 0.00 ft
Drill Pipe Above KB:	5.00 ft			String Weight: Initial 60000.00 lb
Depth to Top Packer:	3767.00 ft			Final 70000.00 lb
Depth to Bottom Packer:	ft			
Interval between Packers:	13.00 ft			
Tool Length:	36.00 ft			
Number of Packers:	1	Diameter: 6.75 inches		

Tool Comments:

Tool Description	Length (ft)	Serial No.	Position	Depth (ft)	Accum. Lengths
------------------	-------------	------------	----------	------------	----------------

Shut-In Tool	5.00			3749.00	
Hydraulic tool	5.00			3754.00	
Jars	6.00			3760.00	
Safety Joint	2.00			3762.00	
Packer	5.00			3767.00	23.00 Bottom Of Top Packer
Anchor	8.00			3775.00	
Recorder	1.00	6749	Inside	3776.00	
Recorder	1.00	8938	Outside	3777.00	
Bullnose	3.00			3780.00	13.00 Anchor Tool
Total Tool Length:	36.00				



DRILL STEM TEST REPORT

FLUID SUMMARY

FG Holl Company LLC

1/21S/16W/Pawnee

9431 East Central
Suite 100
Wichita, Kansas 67206+2563
ATTN: Ryan Greenbaum

Foster Trust A #1-1

Job Ticket: 18271 **DST#: 2**
Test Start: 2014.04.03 @ 21:17:00

Mud and Cushion Information

Mud Type: Gel Chem	Cushion Type:	Oil API:	deg API
Mud Weight: 9.00 lb/gal	Cushion Length: ft	Water Salinity:	ppm
Viscosity: 48.00 sec/qt	Cushion Volume: bbl		
Water Loss: 7.60 in ³	Gas Cushion Type:		
Resistivity: ohm.m	Gas Cushion Pressure: psig		
Salinity: 6500.00 ppm			
Filter Cake: 1.00 inches			

Recovery Information

Recovery Table

Length ft	Description	Volume bbl
759.00	Gas and Oil cut Muddy Water	10.647
0.00	Gas 5% Oil 5% Mud 30% Water 60%	0.000
1736.00	Gassy Water	24.352
0.00	Gas 5% Water 95%	0.000
0.00	Recov. Chlorides 42.000 ppm	0.000
0.00	Recov. Resist. .30ohms @45deg	0.000

Total Length: 2495.00 ft Total Volume: 34.999 bbl

Num Fluid Samples: 0 Num Gas Bombs: 0 Serial #:

Laboratory Name: Laboratory Location:

Recovery Comments:



DRILL STEM TEST REPORT

GAS RATES

FG Holl Company LLC

1/21S/16W/Pawnee

9431 East Central
Suite 100
Wichita, Kansas 67206+2563
ATTN: Ryan Greenbaum

Foster Trust A #1-1

Job Ticket: 18271

DST#: 2

Test Start: 2014.04.03 @ 21:17:00

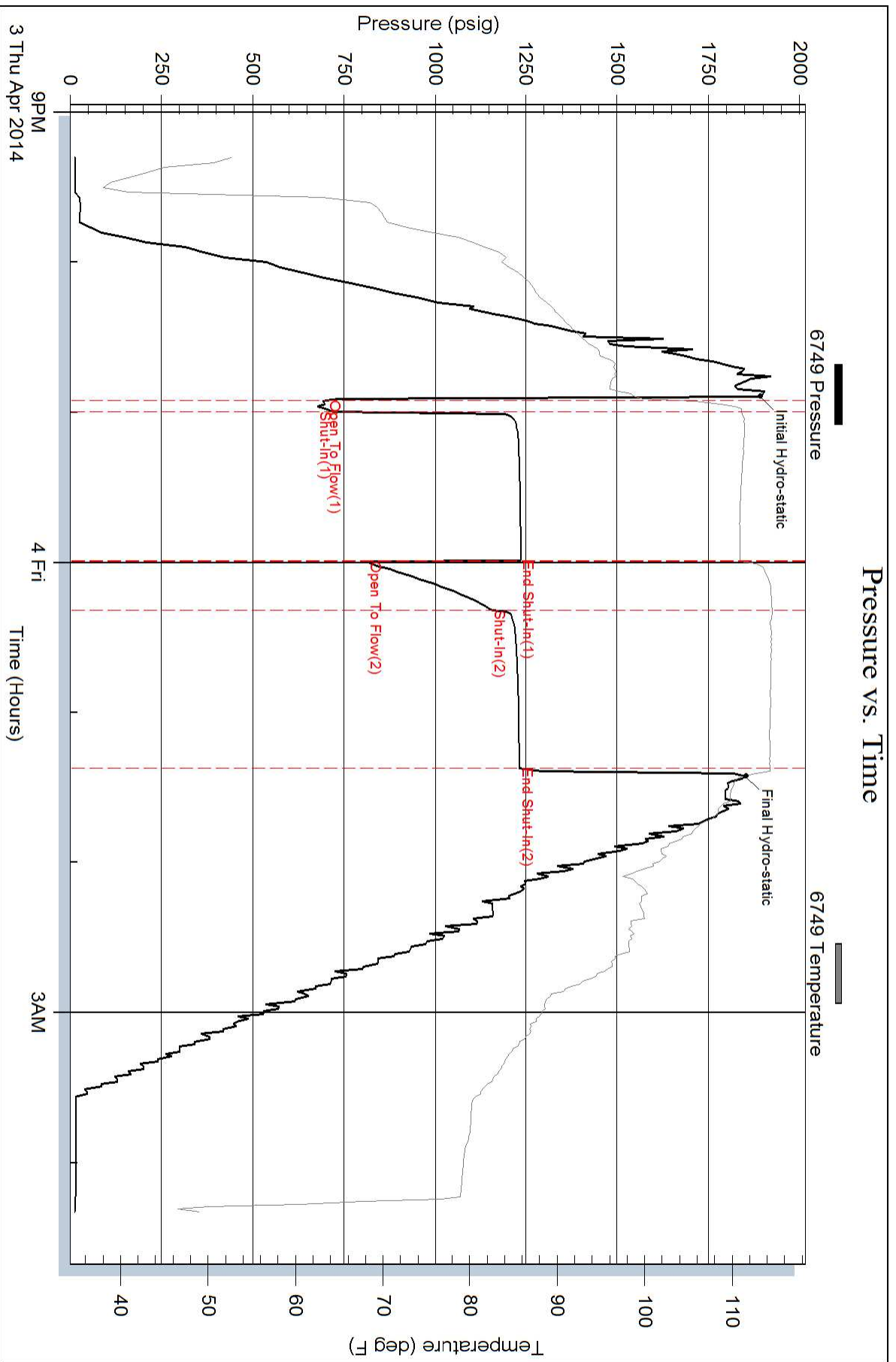
Gas Rates Information

Temperature: 59 (deg F)
Relative Density: 0.65
Z Factor: 0.8

Gas Rates Table

Flow Period	Elapsed Time	Choke (inches)	Pressure (psig)	Gas Rate (Mcf/d)
2	10	0.13	0.00	5.39
2	20	0.13	0.00	5.39

Pressure vs. Time



Pressure vs. Time

