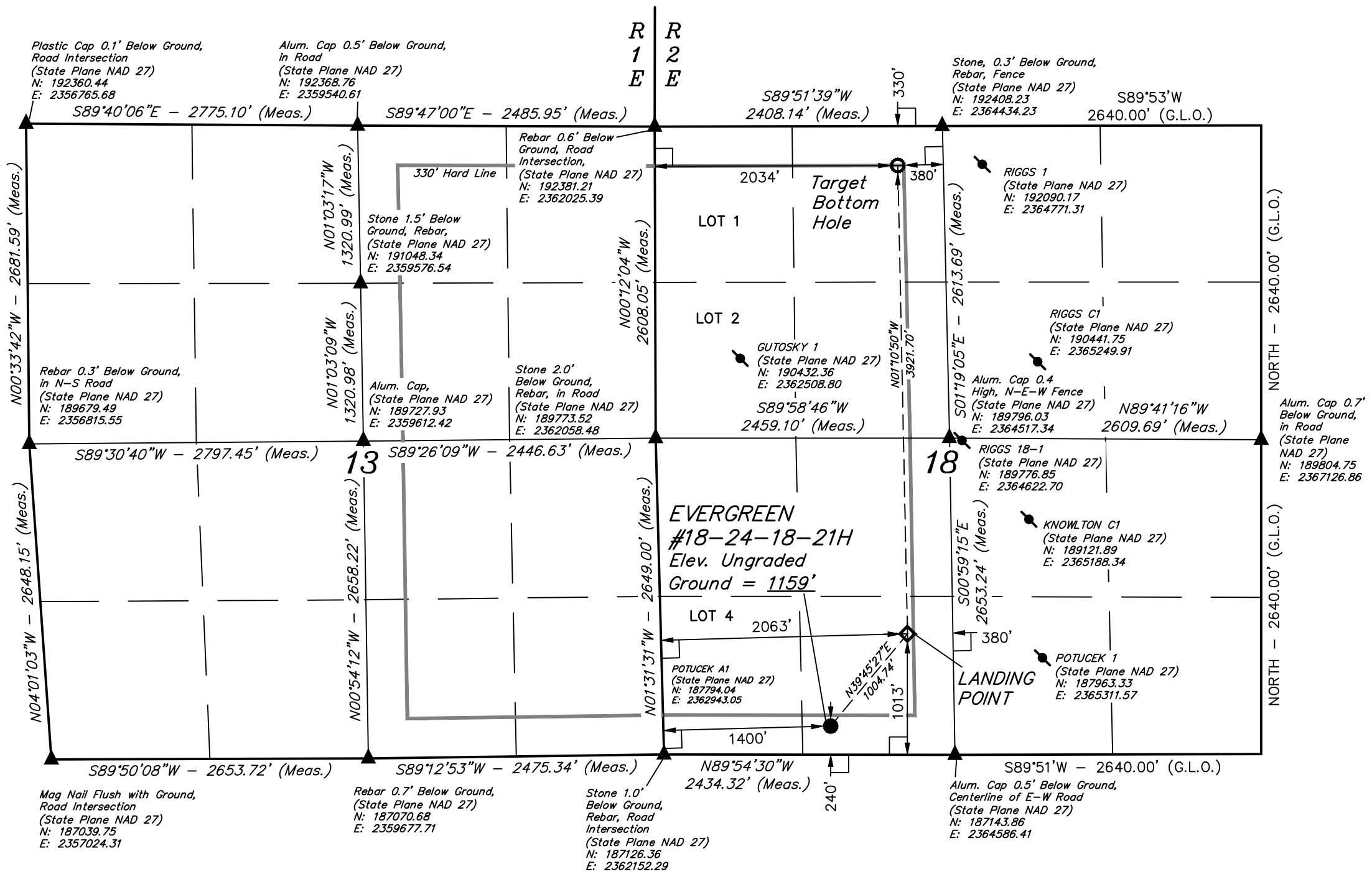
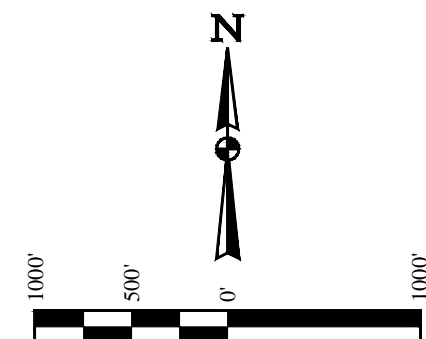


T33S, R2E, 6th P.M.

Source Energy Midcon, LLC  
**EVERGREEN #18-24-18-21H**  
 SE 1/4 SW 1/4, SECTION 18, T33S, R2E, 6th P.M.  
 SUMNER COUNTY, KANSAS

**BASIS OF BEARINGS**  
 BASIS OF BEARINGS IS A G.P.S. OBSERVATION  
**BASIS OF ELEVATION**

BENCHMARK (1356) LOCATED IN THE NE 1/4 SECTION 4, T31S, R3W, 6th. P.M., TAKEN FROM THE CONWAY SPRINGS QUADRANGLE, KANSAS, 7.5 MINUTE QUAD. (TOPOGRAPHIC MAP) PUBLISHED BY THE UNITED STATES DEPARTMENT OF THE INTERIOR, GEOLOGICAL SURVEY. SAID ELEVATION OBTAINED FROM THE NGS DATA SHEET NAVD 88 IS 1356.58 FEET.



- LEGEND:**
- ◻ = 90° SYMBOL
  - = PROPOSED WELLHEAD.
  - = TARGET BOTTOM HOLE.
  - ▲ = SECTION CORNERS LOCATED.
  - ⦿ = EXISTING WELL
  - ◇ = LANDING POINT

NAD 83 (LANDING POINT)	NAD 83 (TARGET BOTTOM HOLE)	NAD 83 (SURFACE LOCATION)
LATITUDE = 37°10'36.22" (37.176728)	LATITUDE = 37°11'14.98" (37.187494)	LATITUDE = 37°10'28.61" (37.174614)
LONGITUDE = 97°15'01.39" (97.250386)	LONGITUDE = 97°15'02.16" (97.250600)	LONGITUDE = 97°15'09.37" (97.252603)
NAD 27 (LANDING POINT)	NAD 27 (TARGET BOTTOM HOLE)	NAD 27 (SURFACE LOCATION)
LATITUDE = 37°10'36.13" (37.176703)	LATITUDE = 37°11'14.89" (37.187469)	LATITUDE = 37°10'28.52" (37.174589)
LONGITUDE = 97°15'00.23" (97.250064)	LONGITUDE = 97°15'01.01" (97.250281)	LONGITUDE = 97°15'08.22" (97.252283)
STATE PLANE NAD 27	STATE PLANE NAD 27	STATE PLANE NAD 27
N: 188154.34 E: 2364179.99	N: 192074.08 E: 2364064.69	N: 187376.37 E: 2363544.27

**CERTIFICATE**  
 THIS IS TO CERTIFY THAT THE ABOVE PLAT WAS PREPARED FROM FIELD NOTES OF ACTUAL SURVEYS MADE BY ME OR UNDER MY SUPERVISION AND THAT THE SAME ARE TRUE AND CORRECT TO THE BEST OF MY KNOWLEDGE AND BELIEF.

*Robert S. Smith*  
 REGISTERED LAND SURVEYOR  
 REGISTRATION NO. 1456  
 STATE OF KANSAS  
 04-10-14

**UINTAH**  
 ENGINEERING & LAND SURVEYING

**UELS, LLC**  
 Corporate Office \* 85 South 200 East  
 Vernal, UT 84078 \* (435) 789-1017

SURVEYED BY: J.P., C.B.	SCALE: 1"=1000'	DRAWN BY: S.S.
DATE: 04-07-14		DATE: 04-10-14

**WELL LOCATION PLAT**