

OPERATOR

Company: TDI, INC.
 Address: 1310 BISON ROAD
 HAYS, KANSAS 67601

Contact Geologist: TOM DENNING
 Contact Phone Nbr: 785-628-2593
 Well Name: ALVIN # 1
 Location: SW SW NE NW Sec.27-10s-17w API: 15-163-24,185-00-00
 Pool: WILDCAT Field: UNNAMED
 State: KANSAS Country: USA



Scale 1:240 Imperial

Well Name: ALVIN # 1
 Surface Location: SW SW NE NW Sec.27-10s-17w
 Bottom Location:
 API: 15-163-24,185-00-00
 License Number: 4787
 Spud Date: 4/4/2014 Time: 8:28 PM
 Region: ROOKS COUNTY
 Drilling Completed: 4/10/2014 Time: 10:05 AM
 Surface Coordinates: 1235' FNL & 1400' FWL
 Bottom Hole Coordinates:
 Ground Elevation: 2065.00ft
 K.B. Elevation: 2075.00ft
 Logged Interval: 2900.00ft To: 3750.00ft
 Total Depth: 3750.00ft
 Formation: CONGLOMERATE
 Drilling Fluid Type: CHEMICAL/FRESH WATER GEL

SURFACE CO-ORDINATES

Well Type: Vertical
 Longitude: -99.2091033 Latitude: 39.1582372
 N/S Co-ord: 1235' FNL
 E/W Co-ord: 1400' FWL

LOGGED BY

Company: SOLUTIONS CONSULTING, INC.
 Address: 108 W 35TH
 HAYS, KS 67601
 Phone Nbr: (785) 639-1337
 Logged By: GEOLOGIST Name: HERB DEINES

CONTRACTOR

Contractor: SOUTHWIND DRILLING, INC.
 Rig #: 1
 Rig Type: MUD ROTARY
 Spud Date: 4/4/2014 Time: 8:28 PM
 TD Date: 4/10/2014 Time: 10:05 AM
 Rig Release: 4/11/2014 Time: 2:00 PM

ELEVATIONS

K.B. Elevation: 2075.00ft Ground Elevation: 2065.00ft
 K.B. to Ground: 10.00ft

NOTES

DECISION TO PLUG AND ABANDON WELL BASED ON NEGATIVE RESULTS OF FOUR DSTS.
 OPEN HOLE LOGGING BY PIONEER ENERGY SERVICES: DUAL INDUCTION LOG, DUAL COMPENSATED POROSITY LOG, MICRORESISTIVITY LOG
 DRILL STEM STEM TESTING BY TRILOBITE TESTING INC: TWO (2) CONVENTIONAL TESTS AND TWO (2) STRADDLE TESTS

FORMATION TOPS COMPARISON AND CHRONOLOGY OF DAILY ACTIVITY


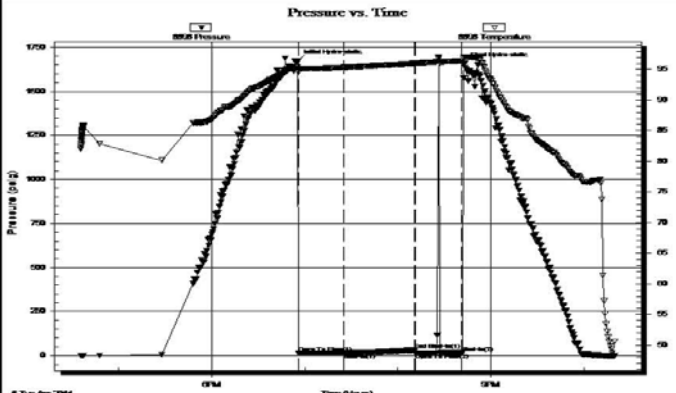
	ALVIN # 1	COLBY # 1	MARSTON A 1-27
	SW SW NE NW	NE NE SW	SW NE NE NE
	SEC.27-10S-17W	SEC.27-10-17W	SEC.27-10-17W
	2065'GL 2075'KB	KB 2070'	KB 2073'
<u>FORMATION</u>	<u>LOG TOPS</u>	<u>LOG TOPS</u>	<u>LOG TOPS</u>
Anhydrite	1318 +757	+ 755	+763
B-Anhydrite	1354 +721	NG	+725
Topeka	3026 -951	- 948	- 947

Heebner Sh.	3248-1173	-1173	-1170
Toronto	3277-1202	-1195	-1193
LKC	3292-1217	-1214	-1213
BKC	3526-1451	-1455	-1457
Conglomerate	3576-1501	-1513	-1500
Simpson Shale	3647-1572	-1568	-1573
Simpson Dol.	3656-1581	-1572	-1583
Arbuckle	3679-1604	-1604	-1601
RTD	3750-1675	-1608	-1652

SUMMARY OF DAILY ACTIVITY

- 4-04-14 RU, Spud 6:00 PM
- 4-05-14 222', set 8 5/8" surface casing to 221' w/ 160 sxs Common 2%Gel 3%CC, slope 3/4 degree, plug down 12:30AM, WOC 8 hrs
- 4-06-14 1850', drilling
- 4-07-14 2630', drilling, displaced 2668' to 2699'
- 4-08-14 3269', drilling, CFS 3370', short trip, TOWB, DST # 1 3338'-3370' "D"
- 4-09-14 3489', drilling, CFS 3685', DST # 2 3534'- 3685' Cg and Simpson
- 4-10-14 3685', finish DST # 2, TIWB, RTD 3750' @10:05AM, CCH, TOWB, logs, DST # 3 straddle test 3464' to 3552' "J" to "Marmaton", start DST # 4 straddle test 3460'-3540' "K" – Marmaton
- 4-11-14 3750', finish DST # 4, P&A

DST # 1 3338' TO 3370' "D" ZONE LKC

	DRILL STEM TEST REPORT																																											
	TDI 1310 Bison Rd Hays, Ks 67601 ATTN: Herb Deines	27-10-17w-Rooks Co. Alvin #1 Job Ticket: 57559 Test Start: 2014.04.08 @ 16:35:52	DST#: 1																																									
GENERAL INFORMATION:																																												
Formation: "D" Deviated: No Whipstock: ft (KB) Time Tool Opened: 18:55:52 Time Test Ended: 22:19:52		Test Type: Conventional Bottom Hole (Initial) Tester: Tate Lang Unit No: 41																																										
Interval: 3338.00 ft (KB) To 3370.00 ft (KB) (TVD) Total Depth: 3370.00 ft (KB) (TVD) Hole Diameter: 7.88 inches Hole Condition: Good		Reference Elevations: 2075.00 ft (KB) 2065.00 ft (CF) KB to GR/CF: 10.00 ft																																										
Serial #: 8898 Outside Press@RunDepth: 15.63 psig @ 3342.00 ft (KB) Start Date: 2014.04.08 End Date: 2014.04.08 Start Time: 16:35:53 End Time: 22:19:52		Capacity: 8000.00 psig Last Calib.: 2014.04.08 Time On Btm: 2014.04.08 @ 18:55:42 Time Off Btm: 2014.04.08 @ 20:42:42																																										
TEST COMMENT: Weak surface blow died in 20 mins Dead no blow back Dead no blow flushed tool dead no blow Pulled tool																																												
	<table border="1" style="width: 100%; border-collapse: collapse;"> <thead> <tr> <th colspan="4" style="text-align: center;">PRESSURE SUMMARY</th> </tr> <tr> <th>Time (Min.)</th> <th>Pressure (psig)</th> <th>Temp (deg F)</th> <th>Annotation</th> </tr> </thead> <tbody> <tr><td>0</td><td>1672.04</td><td>95.44</td><td>Initial Hydro-static</td></tr> <tr><td>1</td><td>14.10</td><td>94.52</td><td>Open To Flow (1)</td></tr> <tr><td>30</td><td>15.63</td><td>95.34</td><td>Shut-In(1)</td></tr> <tr><td>76</td><td>30.33</td><td>95.99</td><td>End Shut-In(1)</td></tr> <tr><td>76</td><td>14.43</td><td>95.99</td><td>Open To Flow (2)</td></tr> <tr><td>106</td><td>15.91</td><td>96.42</td><td>Shut-In(2)</td></tr> <tr><td>107</td><td>1658.54</td><td>97.05</td><td>Final Hydro-static</td></tr> </tbody> </table>			PRESSURE SUMMARY				Time (Min.)	Pressure (psig)	Temp (deg F)	Annotation	0	1672.04	95.44	Initial Hydro-static	1	14.10	94.52	Open To Flow (1)	30	15.63	95.34	Shut-In(1)	76	30.33	95.99	End Shut-In(1)	76	14.43	95.99	Open To Flow (2)	106	15.91	96.42	Shut-In(2)	107	1658.54	97.05	Final Hydro-static					
PRESSURE SUMMARY																																												
Time (Min.)	Pressure (psig)	Temp (deg F)	Annotation																																									
0	1672.04	95.44	Initial Hydro-static																																									
1	14.10	94.52	Open To Flow (1)																																									
30	15.63	95.34	Shut-In(1)																																									
76	30.33	95.99	End Shut-In(1)																																									
76	14.43	95.99	Open To Flow (2)																																									
106	15.91	96.42	Shut-In(2)																																									
107	1658.54	97.05	Final Hydro-static																																									
<table border="1" style="width: 100%; border-collapse: collapse;"> <thead> <tr> <th colspan="3" style="text-align: center;">Recovery</th> </tr> <tr> <th>Length (ft)</th> <th>Description</th> <th>Volume (bbl)</th> </tr> </thead> <tbody> <tr> <td>1.00</td> <td>100%M</td> <td>0.01</td> </tr> <tr><td> </td><td> </td><td> </td></tr> <tr><td> </td><td> </td><td> </td></tr> <tr><td> </td><td> </td><td> </td></tr> <tr><td> </td><td> </td><td> </td></tr> </tbody> </table>	Recovery			Length (ft)	Description	Volume (bbl)	1.00	100%M	0.01													<table border="1" style="width: 100%; border-collapse: collapse;"> <thead> <tr> <th colspan="4" style="text-align: center;">Gas Rates</th> </tr> <tr> <th> </th> <th>Choke (inches)</th> <th>Pressure (psig)</th> <th>Gas Rate (Mcf/d)</th> </tr> </thead> <tbody> <tr><td> </td><td> </td><td> </td><td> </td></tr> <tr><td> </td><td> </td><td> </td><td> </td></tr> <tr><td> </td><td> </td><td> </td><td> </td></tr> </tbody> </table>			Gas Rates					Choke (inches)	Pressure (psig)	Gas Rate (Mcf/d)												
Recovery																																												
Length (ft)	Description	Volume (bbl)																																										
1.00	100%M	0.01																																										
Gas Rates																																												
	Choke (inches)	Pressure (psig)	Gas Rate (Mcf/d)																																									

DST # 2 3534' TO 3685' CONGLOMERATE AND SIMPSON

--	--



TRILOBITE TESTING, INC.

DRILL STEM TEST REPORT

TDI
1310 Bison Rd
Hays, Ks 67601
ATTN: Herb Deines

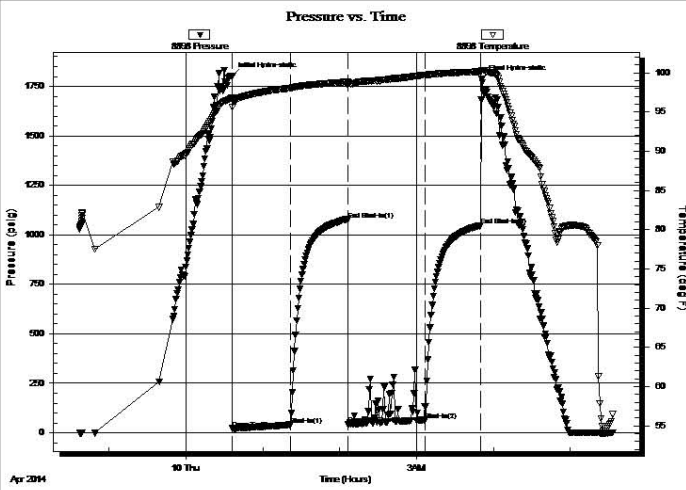
27-10-17w-Rooks Co.
Alvin #1
Job Ticket: 57560 **DST#: 2**
Test Start: 2014.04.09 @ 22:37:01

GENERAL INFORMATION:

Formation: **Cong. Simpson Sand**
Deviated: No Whipstock: ft (KB)
Time Tool Opened: 00:36:21
Time Test Ended: 05:33:40
Test Type: Conventional Bottom Hole (Reset)
Tester: Tate Lang
Unit No: 49
Interval: **3534.00 ft (KB) To 3685.00 ft (KB) (TVD)**
Total Depth: 3368.00 ft (KB) (TVD)
Reference Elevations: 2075.00 ft (KB)
2065.00 ft (CF)
Hole Diameter: 7.88 inches Hole Condition: Good
KB to GR/CF: 10.00 ft

Serial #: 8898 Outside
Press@RunDepth: 64.50 psig @ 3539.00 ft (KB)
Start Date: 2014.04.09 End Date: 2014.04.10
Start Time: 22:37:02 End Time: 05:33:41
Capacity: 8000.00 psig
Last Calib.: 2014.04.10
Time On Btm: 2014.04.10 @ 00:36:11
Time Off Btm: 2014.04.10 @ 03:51:01

TEST COMMENT: Weak surface blow built to 3 in
Dead no blow
Weak surface blow built to 3 in
Dead no blow



Time (Min.)	Pressure (psig)	Temp (deg F)	Annotation
0	1802.30	96.80	Initial Hydro-static
1	21.74	95.67	Open To Flow (1)
46	39.08	98.05	Shut-In(1)
90	1076.82	98.85	End Shut-In(1)
91	44.57	98.38	Open To Flow (2)
151	64.50	99.66	Shut-In(2)
194	1046.28	100.16	End Shut-In(2)
195	1788.19	100.31	Final Hydro-static

Length (ft)	Description	Volume (bbl)
90.00	100%M	1.26

Choke (inches)	Pressure (psig)	Gas Rate (Mcf/d)

* Recovery from multiple tests
Trilobite Testing, Inc

Ref. No: 57560

Printed: 2014.04.10 @ 08:02:05

DST # 3 STRADDLE TEST 3534' TO 3685'



TRILOBITE TESTING, INC.

DRILL STEM TEST REPORT

TDI
1310 Bison Rd
Hays, Ks 67601
ATTN: Herb Deines

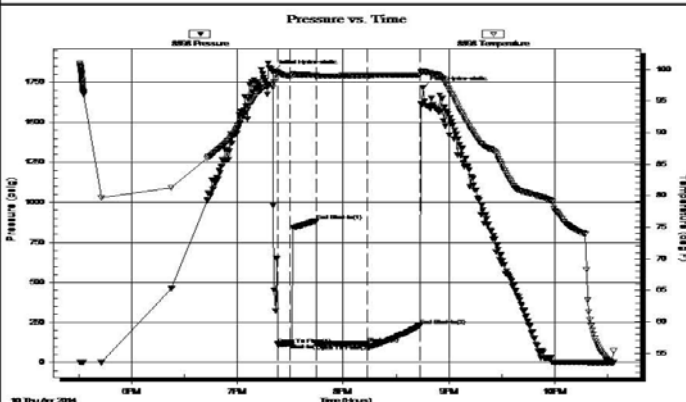
27-10-17w-Rooks Co.
Alvin #1
Job Ticket: **DST#: 3**
Test Start: 2014.04.10 @ 17:30:30

GENERAL INFORMATION:

Formation: **"J-L"**
Deviated: No Whipstock: ft (KB)
Time Tool Opened: 19:22:40
Time Test Ended: 22:33:39
Test Type: Conventional Straddle (Reset)
Tester: Tate Lang
Unit No: 49
Interval: **3464.00 ft (KB) To 3552.00 ft (KB) (TVD)**
Total Depth: 3750.00 ft (KB) (TVD)
Reference Elevations: 2075.00 ft (KB)
2065.00 ft (CF)
Hole Diameter: 7.88 inches Hole Condition: Good
KB to GR/CF: 10.00 ft

Serial #: 8898 Outside
Press@RunDepth: 117.65 psig @ 3465.00 ft (KB)
Start Date: 2014.04.10 End Date: 2014.04.10
Start Time: 17:30:31 End Time: 22:33:40
Capacity: 8000.00 psig
Last Calib.: 2014.04.10
Time On Btm: 2014.04.10 @ 19:20:00
Time Off Btm: 2014.04.10 @ 20:45:30

TEST COMMENT: B.O.B. in 1 min
Dead no blow back
Dead no blow
Dead no blow back



Time (Min.)	Pressure (psig)	Temp (deg F)	Annotation
0	1818.22	97.58	Initial Hydro-static
3	110.75	99.21	Open To Flow (1)
10	115.57	99.00	Shut-In(1)
25	884.45	99.12	End Shut-In(1)
25	111.42	98.68	Open To Flow (2)
54	117.65	99.05	Shut-In(2)
84	229.17	99.11	End Shut-In(2)
86	1717.60	99.64	Final Hydro-static

Length (ft)	Description	Volume (bbl)

Choke (inches)	Pressure (psig)	Gas Rate (Mcf/d)

170.00	100%M	2.38

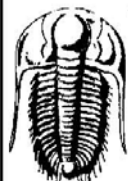
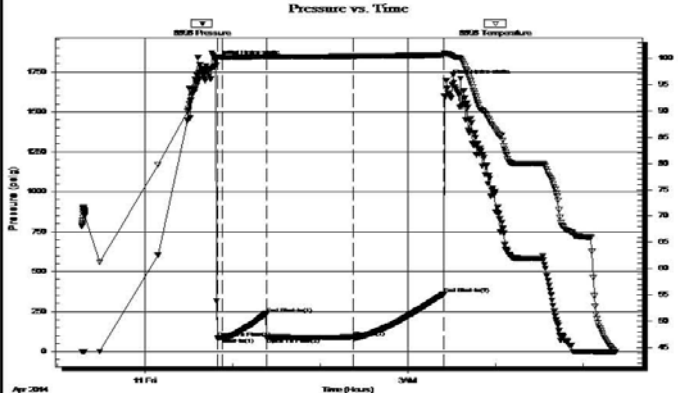
* Recovery from multiple tests

Trilobite Testing, Inc

Ref. No:

Printed: 2014.04.11 @ 00:54:58

DST # 4 STRADDLE TEST 3460' TO 3540' BOTTOM PACKER HELD















 TRILOBITE TESTING, INC.	DRILL STEM TEST REPORT																																					
	TDI 1310 Bison Rd Hays, Ks 67601 ATTN: Herb Deines	27-10-17w-Rooks Co. Alvin #1 Job Ticket: 57562 DST#: 4 Test Start: 2014.04.10 @ 23:16:48																																				
GENERAL INFORMATION: Formation: J-L Deviated: No Whipstock: ft (KB) Time Tool Opened: 00:49:38 Time Test Ended: 05:22:57 Interval: 3460.00 ft (KB) To 3540.00 ft (KB) (TVD) Total Depth: 3750.00 ft (KB) (TVD) Hole Diameter: 7.88 inches Hole Condition: Good Test Type: Conventional Straddle (Reset) Tester: Tate Lang Unit No: 49 Reference Elevations: 2075.00 ft (KB) 2065.00 ft (CF) KB to GR/CF: 10.00 ft																																						
Serial #: 8898 Outside Press@RunDepth: 88.08 psig @ 3461.00 ft (KB) Start Date: 2014.04.10 End Date: 2014.04.11 Start Time: 23:16:49 End Time: 05:22:58 Capacity: 8000.00 psig Last Calib.: 2014.04.11 Time On Btm: 2014.04.11 @ 00:48:28 Time Off Btm: 2014.04.11 @ 03:26:28																																						
TEST COMMENT: B.O.B. in 30 sec Dead no blow Dead no blow Dead no blow																																						
	PRESSURE SUMMARY																																					
	<table border="1"> <thead> <tr> <th>Time (Min.)</th> <th>Pressure (psig)</th> <th>Temp (deg F)</th> <th>Annotation</th> </tr> </thead> <tbody> <tr><td>0</td><td>1817.54</td><td>98.47</td><td>Initial Hydro-static</td></tr> <tr><td>2</td><td>83.88</td><td>100.02</td><td>Open To Flow (1)</td></tr> <tr><td>5</td><td>89.75</td><td>100.20</td><td>Shut-In(1)</td></tr> <tr><td>35</td><td>235.99</td><td>100.27</td><td>End Shut-In(1)</td></tr> <tr><td>35</td><td>88.13</td><td>100.17</td><td>Open To Flow (2)</td></tr> <tr><td>94</td><td>88.08</td><td>100.38</td><td>Shut-In(2)</td></tr> <tr><td>157</td><td>358.89</td><td>100.58</td><td>End Shut-In(2)</td></tr> <tr><td>158</td><td>1693.89</td><td>100.87</td><td>Final Hydro-static</td></tr> </tbody> </table>	Time (Min.)	Pressure (psig)	Temp (deg F)	Annotation	0	1817.54	98.47	Initial Hydro-static	2	83.88	100.02	Open To Flow (1)	5	89.75	100.20	Shut-In(1)	35	235.99	100.27	End Shut-In(1)	35	88.13	100.17	Open To Flow (2)	94	88.08	100.38	Shut-In(2)	157	358.89	100.58	End Shut-In(2)	158	1693.89	100.87	Final Hydro-static	
Time (Min.)	Pressure (psig)	Temp (deg F)	Annotation																																			
0	1817.54	98.47	Initial Hydro-static																																			
2	83.88	100.02	Open To Flow (1)																																			
5	89.75	100.20	Shut-In(1)																																			
35	235.99	100.27	End Shut-In(1)																																			
35	88.13	100.17	Open To Flow (2)																																			
94	88.08	100.38	Shut-In(2)																																			
157	358.89	100.58	End Shut-In(2)																																			
158	1693.89	100.87	Final Hydro-static																																			
<table border="1"> <thead> <tr> <th>Length (ft)</th> <th>Description</th> <th>Volume (bbl)</th> </tr> </thead> <tbody> <tr><td>125.00</td><td>100%M</td><td>1.75</td></tr> <tr><td></td><td></td><td></td></tr> <tr><td></td><td></td><td></td></tr> <tr><td></td><td></td><td></td></tr> <tr><td></td><td></td><td></td></tr> </tbody> </table>	Length (ft)	Description	Volume (bbl)	125.00	100%M	1.75													Gas Rates																			
Length (ft)	Description	Volume (bbl)																																				
125.00	100%M	1.75																																				
	<table border="1"> <thead> <tr> <th>Choke (inches)</th> <th>Pressure (psig)</th> <th>Gas Rate (Mcf/d)</th> </tr> </thead> <tbody> <tr><td></td><td></td><td></td></tr> <tr><td></td><td></td><td></td></tr> <tr><td></td><td></td><td></td></tr> </tbody> </table>	Choke (inches)	Pressure (psig)	Gas Rate (Mcf/d)																																		
Choke (inches)	Pressure (psig)	Gas Rate (Mcf/d)																																				

Trilobite Testing, Inc

Ref. No: 57562

Printed: 2014.04.11 @ 05:34:59

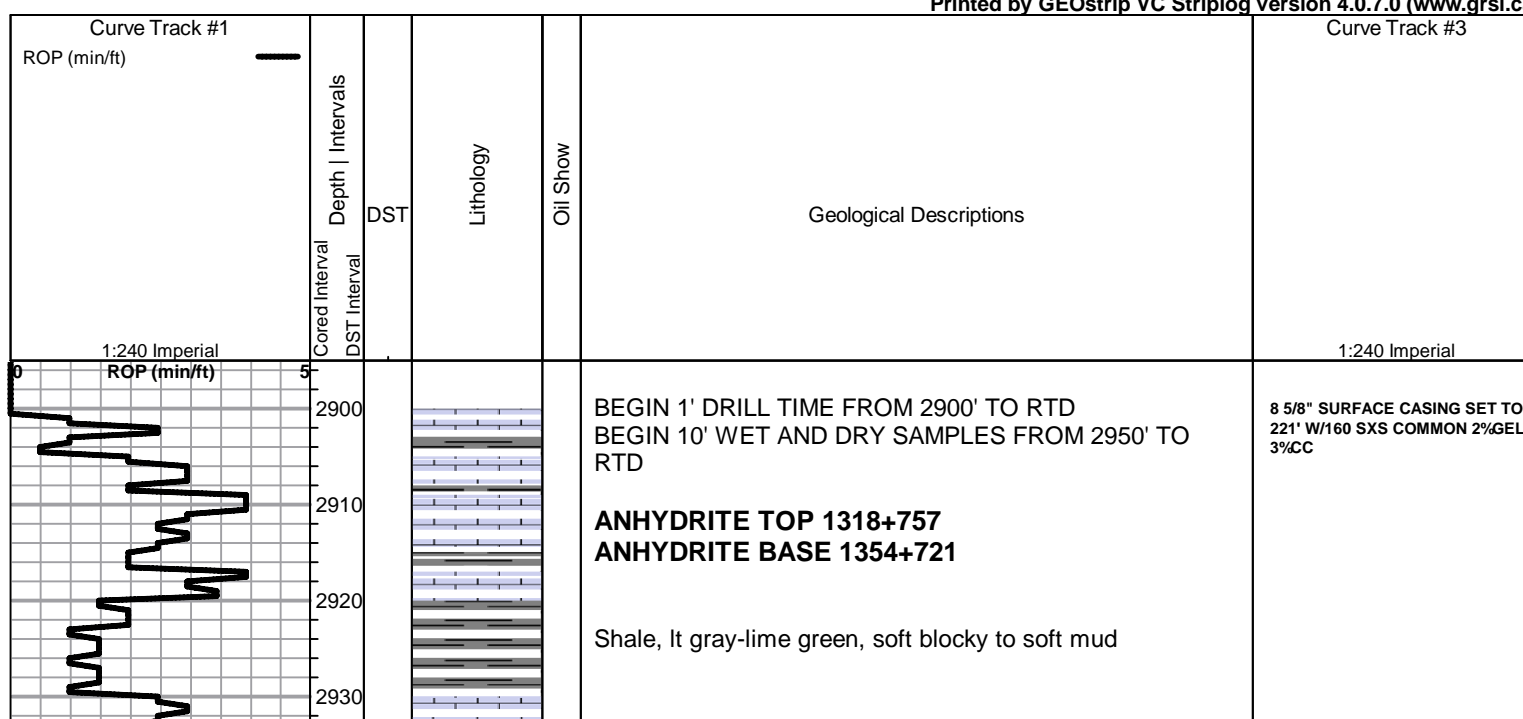
ROCK TYPES

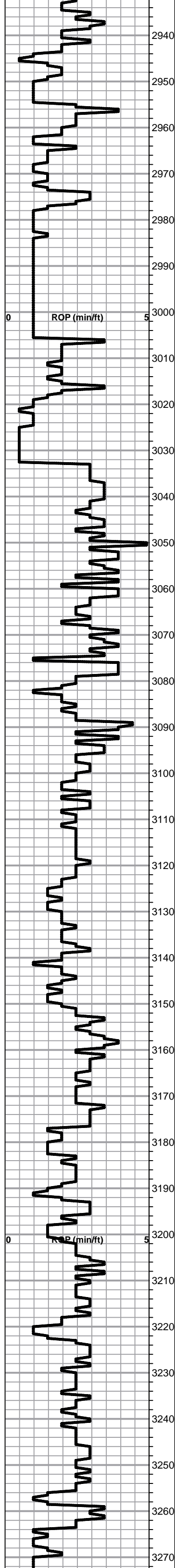
 Clystcol	 Dolprim	 Lmst fw<7	 shale, grn	 shale, red
 Congl	 Dolsec	 Lmst fw7>	 shale, gry	 CglSandy
 Chtcong	 Dol Lime	 Lscong	 Carbon Sh	

ACCESSORIES

- MINERAL**
 ▲ Chert, dark
 P Pyrite
 △ Chert White

Printed by GEOstrip VC Striplog version 4.0.7.0 (www.grsi.ca)





Lime, lt-med brn-grayish brn, fnxln, slightly fossiliferous

Shale, lt gray-tan, soft mud

Shale, lt gray, soft mud

Shale, lt gray, soft mud to soft blocky

Lime, med gray, fnxln, thin fossil beds

Shale, med gray, soft mud to sticky clumps in part

TOPEKA SPL 3032-957

Lime, tan-lt brn, fnxln

Lime, lt brn-lt grayish brn, fnxln with some dark brn, microxn

Lime, tan-lt brn, fnxln, slight bedded chalk in part

Shale, gray-black, blocky

Lime, med brn-med grayish brn, fn-micro xln

Lime, lt brn, fnxln, slight bedded chalk

Lime, lt brn, fnxln-granular, slightly fossiliferous with fusulinids

Lime, lt brn-lt grayish brn, fnxln-granular, slightly fossiliferous

Lime, tan-lt brn-lt gray, fnxln-granular, slight bedded chalk

Shale, med gray with green tint in part, soft blocky, calcareous near shale-lime boundary

Lime, offwhite-crm, fn-micro xln, slight bedded chalk

Lime, crm-lt gray, fn-vfxln, slight fossiliferous

Lime, med brn-med gray, fn-micro xln

Lime, dark brn, fnxln, slightly fossiliferous

Shale, black carbonaceous
Med gray-brn, micro xln

Lime, crm-tan, fnxln, slight bedded chalk, slightly fossiliferous with fusulinids and crinoid segments

Lime, crm-med brn, fnxln, slightly fossilifeorous

Lime, crm-lt brn, fnxln, bedded chalk with white chalky wash, NS

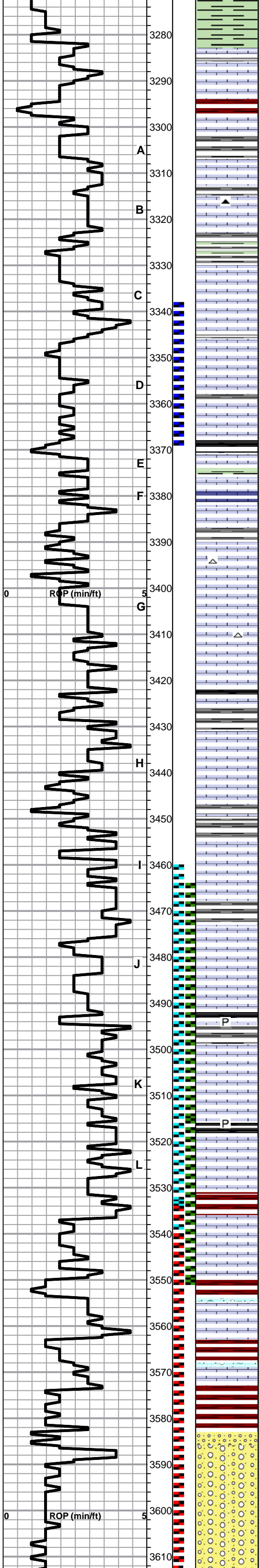
Lime, tan-lt brn, fnxln-granular in part, slight chalky matrix

Lime, crm-lt brn, fnxln-micro xln in part, slight bedded chalk

HEEBNER SHALE SPL 3254-1179

Shale, black carbonaceous, fissile, blocky
Lime, med brn, micro xln

Shale, lime green, soft sticky clumps



TORONTO SPL 3282-1207

Lime, crm-tan-lt brn, fnxln, NS

LKC SPL 3297-1222

Lime, crm, fn-vfxln

Lime, tan-lt brn, fn-micro xln, slight bedded chalk, NS

Lime, lt brn-lt gray, fnxln, thin fossil beds, NS

Shale, lime green-lt gray, soft sticky in part grading into calcareous lime near lime-shale boundary

Lime, crm-tan, fn-micro xln, bedded chalk in part, NS

○ Lime, crm, mostly fnxln, few chips with scattered vugs with lt stain and fine oil specks, very lt odor

Lime, crm, fn-micro xln

Shale, black carbonaceous, blocky
Lime, lt gray, fn-micro xln

Lime, crm-lt brn, fnxln, bedded chalk, NS

Lime, crm, fnxln with lt of bedded chalk, NS

Lime, tan-lt brn, fn-micro xln, bedded chalk
Chert, white, fresh, sharp

Lime, tan-lt brn, fn-vfxln, bedded chalk

Lime, crm-offwhite near shale boundary, fn-micro xln

Shale, black carbonaceous, blocky
Lime, med grayish brn, vfxln, slightly fossiliferous grading into soft sticky gray shale

Lime, crm, fnxln, lot of bedded chalk with white chalk wash

Lime, crm, fn-vfxln, bedded chalk, NS

○ Lime, tan, fn-vfxln, bedded chalk, trace of spotty staining, NFO, very lt odor, appears poorly developed

Shale, med gray-grayish brn, soft-firm blocky

* Lime, tan-lt brn, fn-micro xln, bedded chalk, NFO, trace spotty stain, very lt odor

Lime, tan-lt brn, fn-micro xln

Shale, black carbonaceous, fissile, blocky
lime, lt gray, vfxln

Lime, lt gray, fn-vfxln, mottling near shale boundary

Lime, lt-med gray, fn-vfxln, slightly fossiliferous, well cemented

Lime, crm-lt brn, fn-micro xln, slight bedded chalk, hard on crush

BKC SPL 3531-1456

Lime, tan, fnxln-granular, oolitic in part, slight chalk in part with sticky clumps, NS

Lime, crm, fnxln, bedded chalk. slight clastic mix in part

Shale, dark red wash, soft mud

Shale, brn-gray, firms blocky grading into soft sticky red shale

● Sandstone, vf grained, gritty, saturated stain, NFO, No Odor

Shale, red with with vari colored chert, NS

Shale, red wash, vari colored cherts, few chips with gilsonite, NFO, no odor

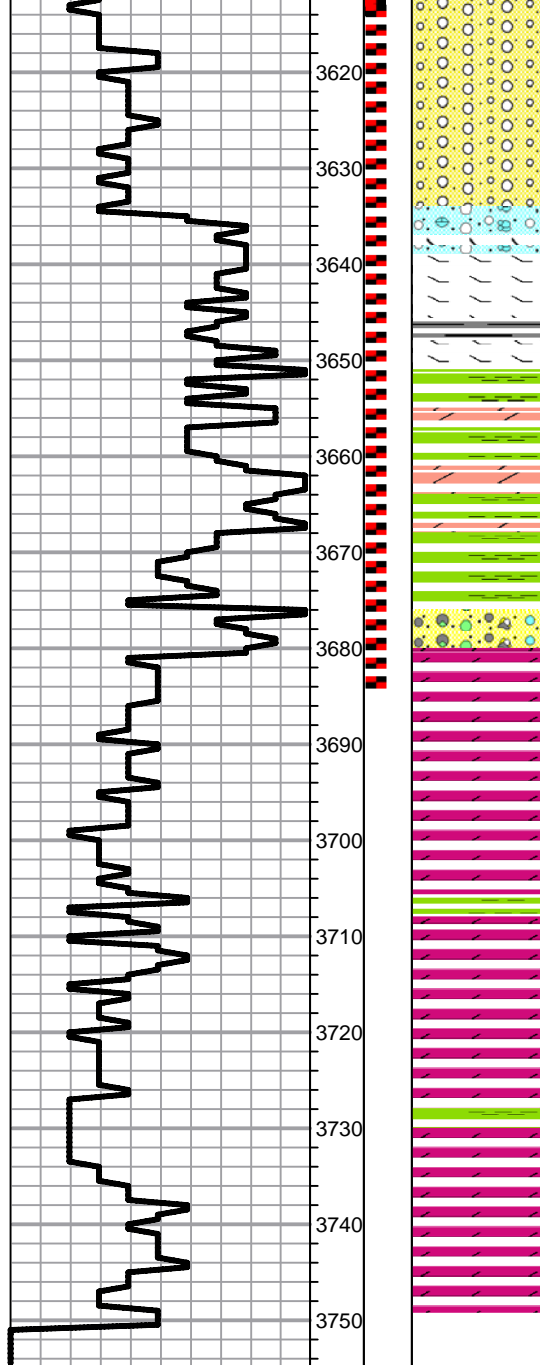
DST # 1 SAMPLE TOP
INTERVAL 3338' TO 3370' "D"
LKC SEE HEADER FOR TEST
SUMMARY PACKERS SET OFF
DRILL TIME

DST # 3 STRADDLE TEST LOG
INTERVAL 3464' TO 3552' SEE
HEADER FOR TEST SUMMARY
PACKERS SET OFF ELOG

DST # 4 STRADDLE TEST # 4
LOG INTERVAL 3460' TO 3540'
SEE HEADER FOR TEST
SUMMARY PACKERS SET OFF
ELOG

NOTE:DST # 3 RECOVERY AND
CHART LEFT QUESTION OF
BOTTOM PACKER SEAT
INTEGRITY, DST # 4 RAN WITH
DIFFERENT PACKER SEATS.

DST # 2 SAMPLE TOP
INTERVAL 3534' TO 3685'
SEE HEADER FOR TEST
SUMMARY PACKERS SET
OFF DRILL TIME



Shale, red with vari colored cherts

Lime, granular, red shale staining, NS

Lime, crm, granular

SIMPSON SHALE SPL 3651-1576

Shale, blue-green, soft weathered in part grading into firm blocky

Dolomite, lt brn, fnxln, NS

Shale, Shale, blue-green, firm blocky, fine xln pyrite inclusions

ARBUCKLE SPL 3680-1605

Dolomite, lt-med brn, fnxln, no odor, NFO, no staining, hard on crush

Dolomite, crm-lt brn, fnxln-granular

Dolomite, crm-lt brn, fnxln-granular in part, sucrosic in part

Dolomite, crm-lt brn, fnxln-granular, hard on crush

Dolomite, crm-lt brn, fnxln-granular, hard on crush

Dolomite, crm-lt brn, fnxln-granular

RTD 3750-1675 LTD 3747-1672

1ST PLUG @3690' W/50 SXS
 2ND PLUG @1345' W/25 SXS
 3RD PLUG @775' W/ 100 SXS
 4TH PLUG @270' W/40 SXS
 5TH PLUG @40' W/10 SXS
 RATHOLE W/30 SXS
 MOUSEHOLE W/20 SXS

USED 270 SXS 60/40POS 4%GEL
 ALLIED (TICKET 055190)