

OPERATOR: **RITCHIE EXPLORATION, INC.**

LEASER: **#1 HAMMERS**
FIELD: **WILDCAT**

LOCATION: **SE SE SW 2 = 396 FSL 2 2470 HWL**
SEC: **13** TWP: **18 N** RGE: **26W**

COUNTY: **LANE** STATE: **KS.**

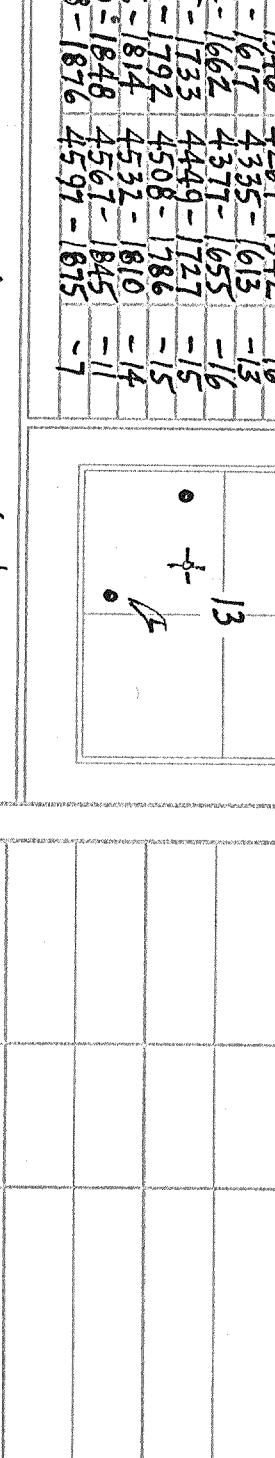
COMPLETION: **W/L D/L G. RIC #2**
Casing: **1-1/4" 47.7**
LOG TO: **3650** TO: **4712**

DRILLING TIME FROM: **3450** TO: **RTD**
STARTERS EXCHANGED FROM: **3650** TO: **RTD**
GEOLOGICAL SUPERVISOR: **3820** TO: **RTD**
MUD OR DISPENSE: **3396** WEL: **WLD** CHEMICAL: **AMT #1** TO: **22,465.00-00**

FORMATION: **101-102** TO: **103** STATE: **KS.**

ANNUALITE: **6200-7430** TO: **2890-1632** C.S.
BRSSE: **2123-509** TO: **2123-600** T.S.
3541-819 TO: **3538-816** T.S.
HEEBERS: **3482-1280** TO: **3950-1218** T.S.
4106-1286 TO: **3195-1252** T.S.
MINERAL: **4106-1286** TO: **4106-1286** T.S.
STARK SH: **4106-1286** TO: **4106-1286** T.S.
BEC: **4339-1617** TO: **4335-1615** T.S.
MARM: **4339-1617** TO: **4335-1615** T.S.
ALTAMONT: **4339-1617** TO: **4335-1615** T.S.
PAWNEE: **4339-1617** TO: **4335-1615** T.S.
FR SCOTT: **4339-1617** TO: **4335-1615** T.S.
CHEROKEE SH: **4339-1617** TO: **4335-1615** T.S.
JOHNSON: **4339-1617** TO: **4335-1615** T.S.
MISS: **4339-1617** TO: **4335-1615** T.S.

WELL LOG SURVEYS: **NABORS**
COMP DENSITY FOR: **DUAL DENSITOMETER**

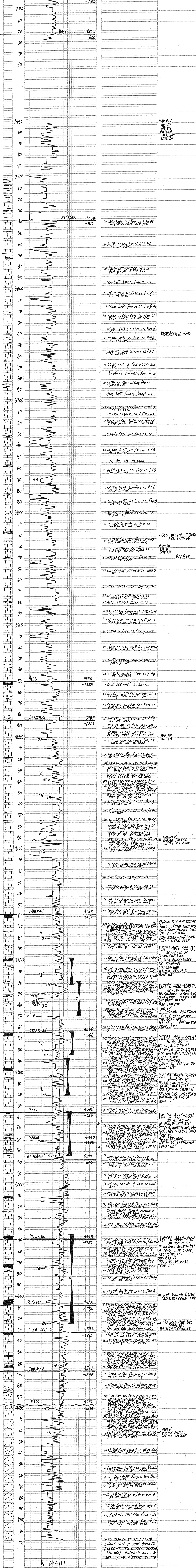
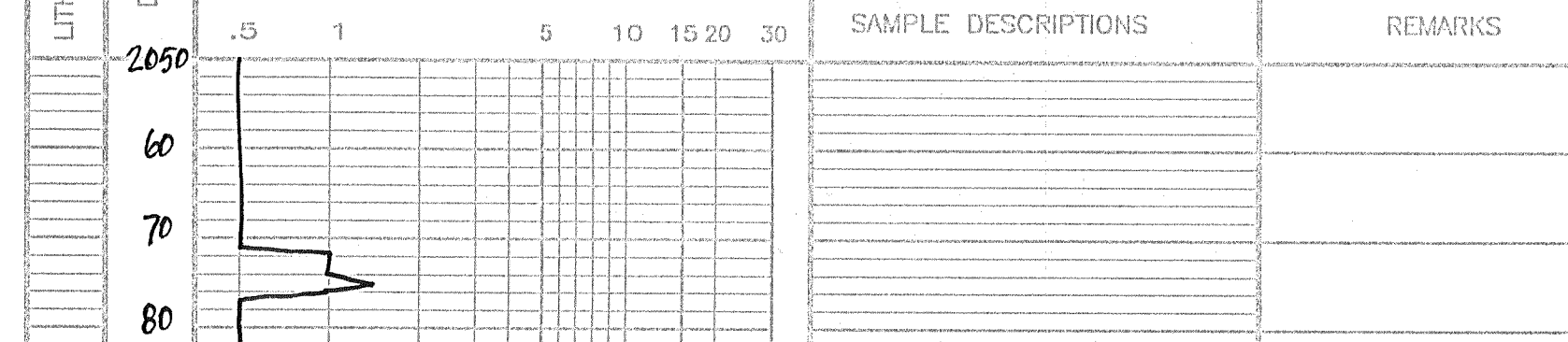


EXPERIENCE: **WEL LOG STRUCTURAL CORRELATION**
ISSUED: **3/5/2014**

DATE	TIME	LOG	DEPTH	REMARKS
1-14	11:15	1705	2122	W/L 1705 SRS. Prod 2470
1-15	11:15	1705	2122	W/L 1705 SRS. Prod 2470
1-16	11:15	1705	2122	W/L 1705 SRS. Prod 2470
1-17	11:15	1705	2122	W/L 1705 SRS. Prod 2470
1-18	11:15	1705	2122	W/L 1705 SRS. Prod 2470
1-19	11:15	1705	2122	W/L 1705 SRS. Prod 2470
1-20	11:15	1705	2122	W/L 1705 SRS. Prod 2470
1-21	11:15	1705	2122	W/L 1705 SRS. Prod 2470
1-22	11:15	1705	2122	W/L 1705 SRS. Prod 2470
1-23	11:15	1705	2122	W/L 1705 SRS. Prod 2470
1-24	11:15	1705	2122	W/L 1705 SRS. Prod 2470
1-25	11:15	1705	2122	W/L 1705 SRS. Prod 2470
1-26	11:15	1705	2122	W/L 1705 SRS. Prod 2470
1-27	11:15	1705	2122	W/L 1705 SRS. Prod 2470
1-28	11:15	1705	2122	W/L 1705 SRS. Prod 2470
1-29	11:15	1705	2122	W/L 1705 SRS. Prod 2470
1-30	11:15	1705	2122	W/L 1705 SRS. Prod 2470

IT WAS RECOMMENDED TO RUN SFC PERMUTATION
AS A RESULT OF JUST RECOVERIES, STRATEGIC DESIGN, &
E-LOG EVALUATION.
WILEE ENGELBRECHT
GEOLOGIST LIC #334

LEGEND



RTD = 4717'
LTD = 4722'