



TRILOBITE TESTING, INC.

DRILL STEM TEST REPORT

Culbreath Oil & Gas Co., Inc.

36/9s/26w Sheridan KS

1532 S Peoria Ave
Tulsa, OK 74120

Dubois #3-36

ATTN: Steve Murphy

Job Ticket: 56979

DST#: 2

Test Start: 2014.03.24 @ 19:38:00

GENERAL INFORMATION:

Formation: **LKC "I-J"**

Deviated: No Whipstock: ft (KB)

Time Tool Opened: 22:41:00

Time Test Ended: 06:03:30

Test Type: Conventional Bottom Hole (Reset)

Tester: James Winder/ Brando

Unit No: 57

Interval: 4010.00 ft (KB) To 4044.00 ft (KB) (TVD)

Reference Elevations: 2601.00 ft (KB)

Total Depth: 4044.00 ft (KB) (TVD)

2591.00 ft (CF)

Hole Diameter: 7.88 inches Hole Condition: Fair

KB to GR/CF: 10.00 ft

Serial #: 8671

Inside

Press @ Run Depth: 94.52 psig @ 4011.00 ft (KB)

Capacity: 8000.00 psig

Start Date: 2014.03.24

End Date:

2014.03.25

Last Calib.:

2014.03.25

Start Time: 19:38:05

End Time:

06:03:30

Time On Btm:

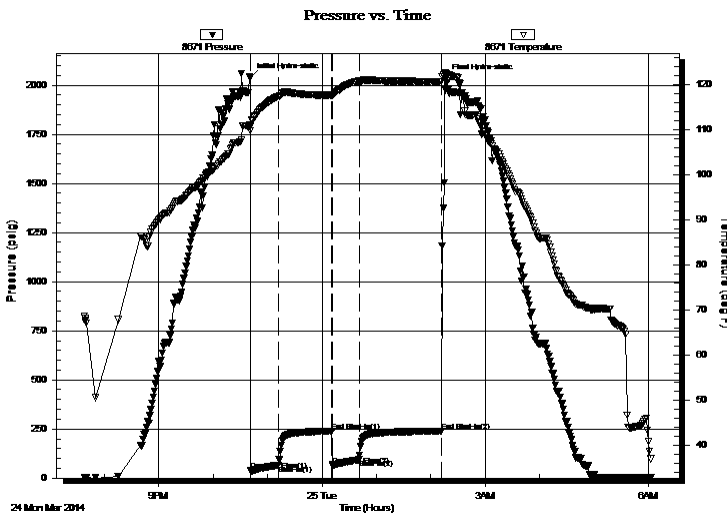
2014.03.24 @ 22:40:45

Time Off Btm:

2014.03.25 @ 02:15:30

TEST COMMENT: 30-IF-Blow built to BOB (11") in 3 1/2 min.
60-ISI-Blow Back @ 45 min. built to 1/4"
30-FF-Blow Built to BOB in 45 sec.
90-FSI-Blow back built to 4 1/2 in.

PRESSURE SUMMARY



Time (Min.)	Pressure (psig)	Temp (deg F)	Annotation
0	2039.13	111.10	Initial Hydro-static
1	39.03	109.84	Open To Flow (1)
31	66.26	117.42	Shut-In(1)
90	237.78	117.67	End Shut-In(1)
91	65.32	117.66	Open To Flow (2)
120	94.52	120.87	Shut-In(2)
211	238.40	120.69	End Shut-In(2)
215	2034.39	122.75	Final Hydro-static

Recovery

Length (ft)	Description	Volume (bbl)
62.00	GOCM 42% <i>m</i> , 30% <i>g</i> , 28% <i>o</i>	0.87
83.00	GMO 48% <i>o</i> , 40% <i>m</i> , 12% <i>g</i>	1.16
55.00	CO 99% <i>o</i> , 1% <i>m</i>	0.77
0.00	GIP=1545'	0.00

* Recovery from multiple tests

Gas Rates

	Choke (inches)	Pressure (psig)	Gas Rate (Mcf/d)



**TRILOBITE
TESTING, INC.**

DRILL STEM TEST REPORT

FLUID SUMMARY

Culbreath Oil & Gas Co., Inc.

36/9s/26w Sheridan KS

1532 S Peoria Ave
Tulsa, OK 74120

Dubois #3-36

Job Ticket: 56979

DST#: 2

ATTN: Steve Murphy

Test Start: 2014.03.24 @ 19:38:00

Mud and Cushion Information

Mud Type: Gel Chem

Cushion Type:

Oil API:

38.8 deg API

Mud Weight: 9.00 lb/gal

Cushion Length:

ft

Water Salinity:

ppm

Viscosity: 60.00 sec/qt

Cushion Volume:

bbbl

Water Loss: 7.97 in³

Gas Cushion Type:

Resistivity: ohm.m

Gas Cushion Pressure:

psig

Salinity: 3000.00 ppm

Filter Cake: 1.00 inches

Recovery Information

Recovery Table

Length ft	Description	Volume bbbl
62.00	GOCM 42% <i>m</i> , 30% <i>g</i> , 28% <i>o</i>	0.870
83.00	GMO 48% <i>o</i> , 40% <i>m</i> , 12% <i>g</i>	1.164
55.00	CO 99% <i>o</i> , 1% <i>m</i>	0.772
0.00	GIP=1545'	0.000

Total Length: 200.00 ft Total Volume: 2.806 bbl

Num Fluid Samples: 0

Num Gas Bombs: 0

Serial #:

Laboratory Name:

Laboratory Location:

Recovery Comments: Gravity=36 API @ 32degF; Corrected Gravity=38.8 API

Serial #: 8671

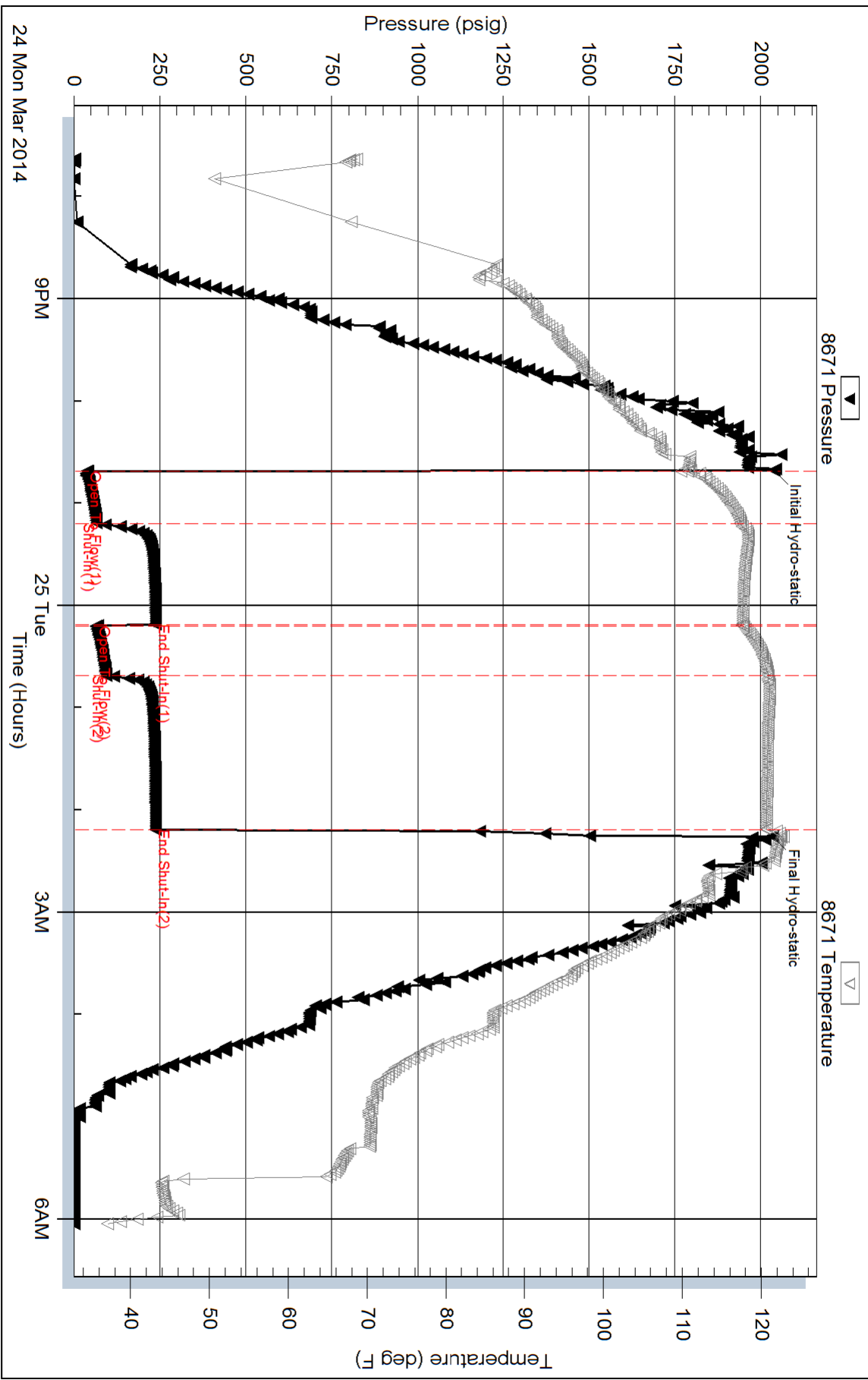
Inside

Culbreath Oil & Gas Co., Inc.

Dulbois #3-36

DST Test Number: 2

Pressure vs. Time



Triobite Testing, Inc

Ref. No: 56979

Printed: 2014.03.25 @ 08:08:58