



DRILL STEM TEST REPORT

Prepared For: **Gore Oil Co.**

PO Box 2757
Wichita, KS 67202

ATTN: Chuck Schmaltz

Ganoung B #3

32-9s-17w Rooks,KS

Start Date: 2013.10.28 @ 22:46:00

End Date: 2013.10.29 @ 09:26:45

Job Ticket #: 55763 DST #: 1

Trilobite Testing, Inc
PO Box 362 Hays, KS 67601
ph: 785-625-4778 fax: 785-625-5620

Printed: 2013.11.01 @ 09:25:08



**TRILOBITE
TESTING, INC.**

DRILL STEM TEST REPORT

Gore Oil Co.
PO Box 2757
Wichita, KS 67202
ATTN: Chuck Schmalz

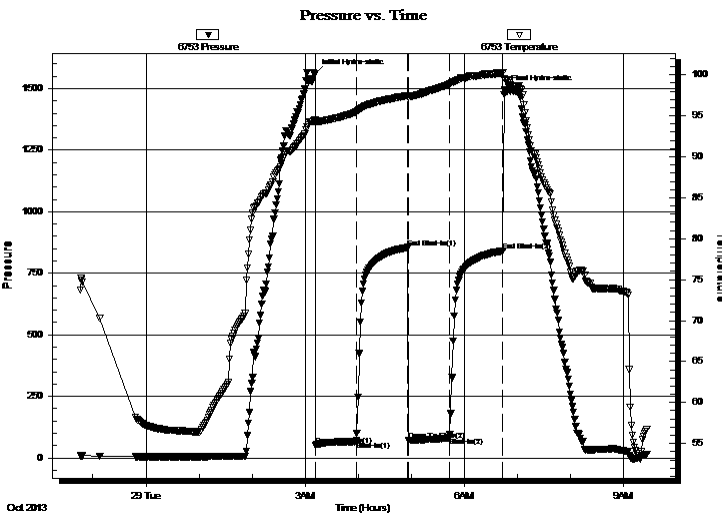
32-9s-17w Rooks,KS
Ganoung B #3
Job Ticket: 55763 **DST#: 1**
Test Start: 2013.10.28 @ 22:46:00

GENERAL INFORMATION:

Formation: **Lansing**
Deviated: No Whipstock: ft (KB)
Time Tool Opened: 03:11:15
Time Test Ended: 09:26:45
Interval: **3226.00 ft (KB) To 3310.00 ft (KB) (TVD)**
Total Depth: 3310.00 ft (KB) (TVD)
Hole Diameter: 7.88 inches Hole Condition: Fair
Test Type: Conventional Bottom Hole (Initial)
Tester: Brannan L
Unit No: 59
Reference Elevations: 2102.00 ft (KB)
2094.00 ft (CF)
KB to GR/CF: 8.00 ft

Serial #: 6753 Outside
Press @ Run Depth: 83.90 psig @ 3242.00 ft (KB) Capacity: 8000.00 psig
Start Date: 2013.10.28 End Date: 2013.10.29 Last Calib.: 2013.10.29
Start Time: 22:46:05 End Time: 09:26:45 Time On Btm: 2013.10.29 @ 03:11:00
Time Off Btm: 2013.10.29 @ 06:44:45

TEST COMMENT: 45- IF- Built to 2 1/2"
60- ISI- No blow
45- FF- Built to 1"
60- FSI- No blow



PRESSURE SUMMARY

Time (Min.)	Pressure (psig)	Temp (deg F)	Annotation
0	1562.18	94.58	Initial Hydro-static
1	50.56	94.09	Open To Flow (1)
47	69.82	95.47	Shut-In(1)
105	854.90	97.47	End Shut-In(1)
106	71.24	97.24	Open To Flow (2)
152	83.90	98.82	Shut-In(2)
213	840.89	100.29	End Shut-In(2)
214	1495.08	99.47	Final Hydro-static

Recovery

Length (ft)	Description	Volume (bbl)
75.00	WM, 20%W 80%M	0.75

Gas Rates

Choke (inches)	Pressure (psig)	Gas Rate (Mcf/d)



**TRILOBITE
TESTING, INC.**

DRILL STEM TEST REPORT

TOOL DIAGRAM

Gore Oil Co.

32-9s-17w Rooks,KS

PO Box 2757
Wichita, KS 67202

Ganoung B #3

Job Ticket: 55763

DST#: 1

ATTN: Chuck Schmaltz

Test Start: 2013.10.28 @ 22:46:00

Tool Information

Drill Pipe:	Length: 3194.00 ft	Diameter: 3.75 inches	Volume: 43.63 bbl	Tool Weight: 2000.00 lb
Heavy Wt. Pipe:	Length: ft	Diameter: 2.75 inches	Volume: - bbl	Weight set on Packer: 25000.00 lb
Drill Collar:	Length: 31.00 ft	Diameter: 2.25 inches	Volume: 0.15 bbl	Weight to Pull Loose: 60000.00 lb
			<u>Total Volume: - bbl</u>	Tool Chased 0.00 ft
Drill Pipe Above KB:	19.00 ft			String Weight: Initial 58000.00 lb
Depth to Top Packer:	3226.00 ft			Final 59000.00 lb
Depth to Bottom Packer:	ft			
Interval between Packers:	84.00 ft			
Tool Length:	104.00 ft			
Number of Packers:	2	Diameter: 6.75 inches		

Tool Comments:

Tool Description	Length (ft)	Serial No.	Position	Depth (ft)	Accum. Lengths
------------------	-------------	------------	----------	------------	----------------

Change Over Sub	1.00			3207.00	
Shut In Tool	5.00			3212.00	
Hydraulic tool	5.00			3217.00	
Packer	5.00			3222.00	20.00 Bottom Of Top Packer
Packer	4.00			3226.00	
Stubb	1.00			3227.00	
Perforations	15.00			3242.00	
Recorder	0.00	8319	Inside	3242.00	
Recorder	0.00	6753	Outside	3242.00	
Change Over Sub	1.00			3243.00	
Drill Pipe	63.00			3306.00	
Change Over Sub	1.00			3307.00	
Bullnose	3.00			3310.00	84.00 Bottom Packers & Anchor

Total Tool Length: 104.00



**TRILOBITE
TESTING, INC.**

DRILL STEM TEST REPORT

FLUID SUMMARY

Gore Oil Co.
PO Box 2757
Wichita, KS 67202
ATTN: Chuck Schmaltz

32-9s-17w Rooks,KS
Ganoung B #3
Job Ticket: 55763 **DST#: 1**
Test Start: 2013.10.28 @ 22:46:00

Mud and Cushion Information

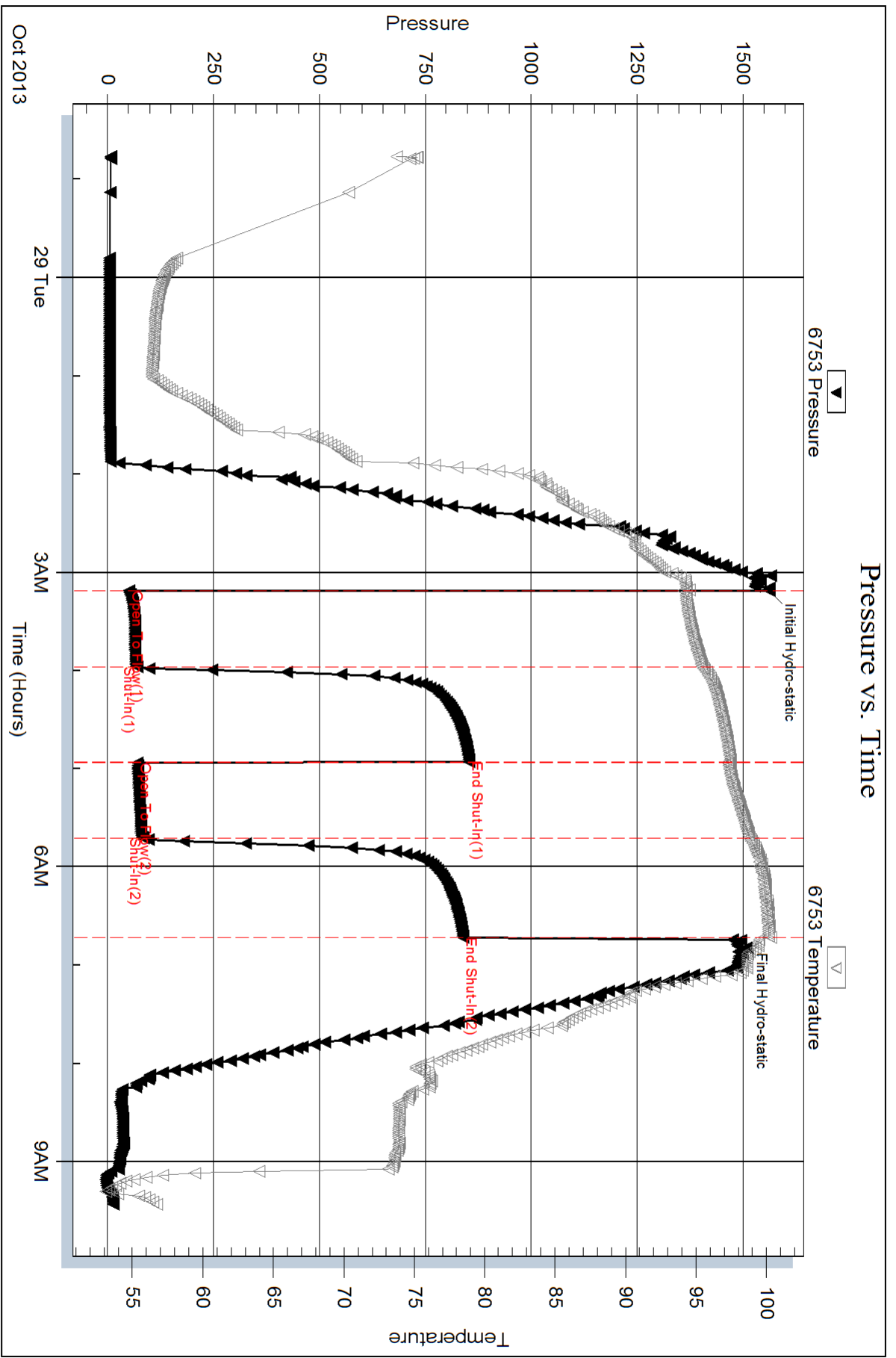
Mud Type: Gel Chem	Cushion Type:	Oil API:	deg API
Mud Weight: 9.00 lb/gal	Cushion Length: ft	Water Salinity:	18000 ppm
Viscosity: 51.00 sec/qt	Cushion Volume: bbl		
Water Loss: 8.38 in ³	Gas Cushion Type:		
Resistivity: ohm.m	Gas Cushion Pressure: psig		
Salinity: 3500.00 ppm			
Filter Cake: inches			

Recovery Information

Recovery Table

Length ft	Description	Volume bbl
75.00	WM, 20%W 80%M	0.754

Total Length: 75.00 ft Total Volume: 0.754 bbl
 Num Fluid Samples: 0 Num Gas Bombs: 0 Serial #:
 Laboratory Name: Laboratory Location:
 Recovery Comments:



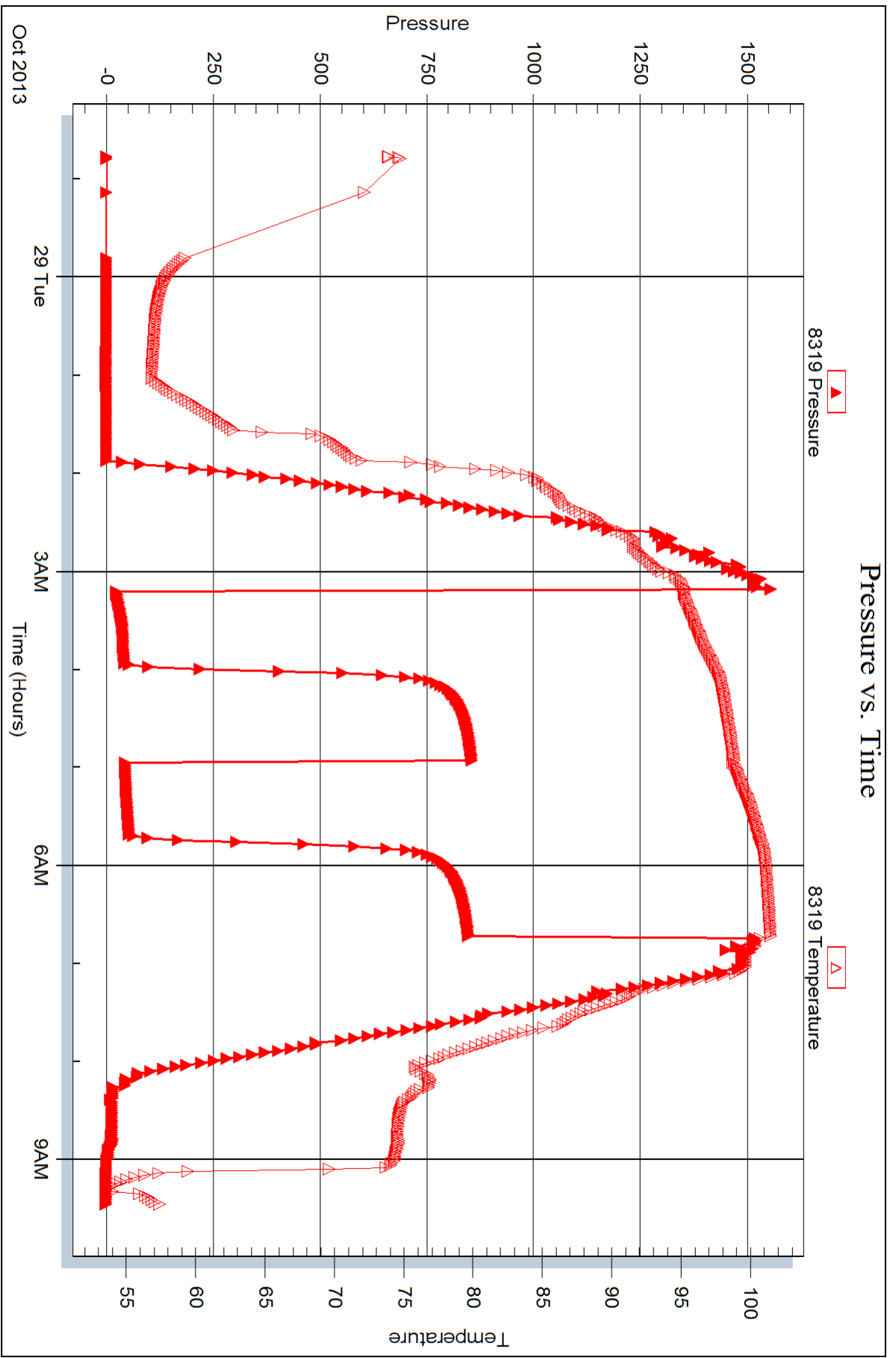
Serial #: 8319

Inside

Gore Oil Co.

Ganoung B#3

DST Test Number: 1





DRILL STEM TEST REPORT

Prepared For: **Gore Oil Co.**

PO Box 2757
Wichita, KS 67202

ATTN: Chuck Schmaltz

Ganoung B #3

32-9s-17w Rooks,KS

Start Date: 2013.10.29 @ 16:54:00

End Date: 2013.10.29 @ 23:51:45

Job Ticket #: 55764 DST #: 2

Trilobite Testing, Inc

PO Box 362 Hays, KS 67601

ph: 785-625-4778 fax: 785-625-5620

Printed: 2013.11.01 @ 09:24:36



TRILOBITE TESTING, INC.

DRILL STEM TEST REPORT

Gore Oil Co.
 PO Box 2757
 Wichita, KS 67202
 ATTN: Chuck Schmalz

32-9s-17w Rooks,KS
Ganoung B #3
 Job Ticket: 55764 **DST#: 2**
 Test Start: 2013.10.29 @ 16:54:00

GENERAL INFORMATION:

Formation: **Lansing**
 Deviated: No Whipstock: ft (KB)
 Time Tool Opened: 19:09:00
 Time Test Ended: 23:51:45
 Interval: **3312.00 ft (KB) To 3336.00 ft (KB) (TVD)**
 Total Depth: 3310.00 ft (KB) (TVD)
 Hole Diameter: 7.88 inches Hole Condition: Fair
 Test Type: Conventional Bottom Hole (Reset)
 Tester: Brannan L
 Unit No: 59
 Reference Elevations: 2102.00 ft (KB)
 2094.00 ft (CF)
 KB to GR/CF: 8.00 ft

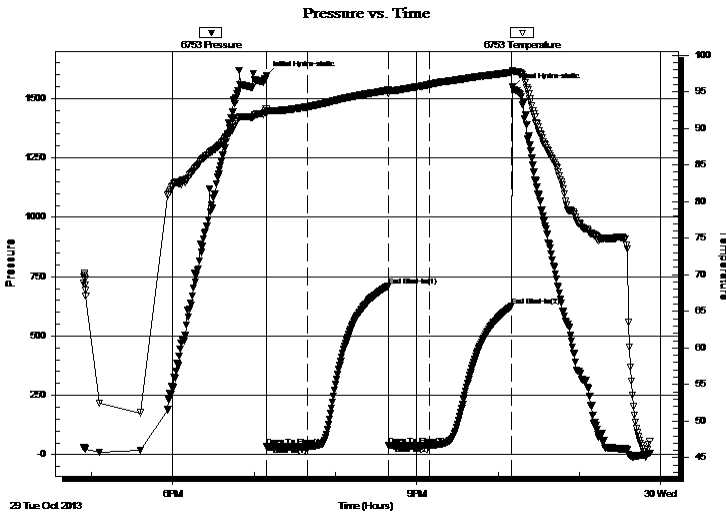
Serial #: 6753

Outside

Press @ Run Depth: 38.64 psig @ 3333.00 ft (KB) Capacity: 8000.00 psig
 Start Date: 2013.10.29 End Date: 2013.10.29 Last Calib.: 2013.10.29
 Start Time: 16:54:05 End Time: 23:51:44 Time On Btm: 2013.10.29 @ 19:08:45
 Time Off Btm: 2013.10.29 @ 22:10:30

TEST COMMENT: 30- IF- Weak surface blow
 60- IS- No blow
 30- FF- No blow
 60- FSI- No blow

PRESSURE SUMMARY



Time (Min.)	Pressure (psig)	Temp (deg F)	Annotation
0	1594.81	92.61	Initial Hydro-static
1	35.86	92.01	Open To Flow (1)
31	34.23	92.93	Shut-In(1)
90	710.57	95.19	End Shut-In(1)
91	40.38	94.74	Open To Flow (2)
121	38.64	95.98	Shut-In(2)
182	624.73	97.63	End Shut-In(2)
182	1547.90	97.91	Final Hydro-static

Recovery

Length (ft)	Description	Volume (bbl)
5.00	M, 100%M	0.02

* Recovery from multiple tests

Gas Rates

Choke (inches)	Pressure (psig)	Gas Rate (Mcf/d)



**TRILOBITE
TESTING, INC.**

DRILL STEM TEST REPORT

TOOL DIAGRAM

Gore Oil Co.
PO Box 2757
Wichita, KS 67202
ATTN: Chuck Schmaltz

32-9s-17w Rooks, KS
Ganoung B #3
Job Ticket: 55764 **DST#: 2**
Test Start: 2013.10.29 @ 16:54:00

Tool Information

Drill Pipe:	Length: 3285.00 ft	Diameter: 3.75 inches	Volume: 44.88 bbl	Tool Weight:	2000.00 lb
Heavy Wt. Pipe:	Length: ft	Diameter: 2.75 inches	Volume: - bbl	Weight set on Packer:	25000.00 lb
Drill Collar:	Length: 31.00 ft	Diameter: 2.25 inches	Volume: 0.15 bbl	Weight to Pull Loose:	60000.00 lb
			<u>Total Volume:</u>	Tool Chased	0.00 ft
Drill Pipe Above KB:	24.00 ft			String Weight: Initial	59000.00 lb
Depth to Top Packer:	3312.00 ft			Final	59000.00 lb
Depth to Bottom Packer:	ft				
Interval between Packers:	24.00 ft				
Tool Length:	44.00 ft				
Number of Packers:	2	Diameter: 6.75 inches			

Tool Comments:

Tool Description	Length (ft)	Serial No.	Position	Depth (ft)	Accum. Lengths
-------------------------	--------------------	-------------------	-----------------	-------------------	-----------------------

Change Over Sub	1.00			3293.00	
Shut In Tool	5.00			3298.00	
Hydraulic tool	5.00			3303.00	
Packer	5.00			3308.00	20.00 Bottom Of Top Packer
Packer	4.00			3312.00	
Stubb	1.00			3313.00	
Perforations	20.00			3333.00	
Recorder	0.00	8319	Inside	3333.00	
Recorder	0.00	6753	Outside	3333.00	
Bullnose	3.00			3336.00	24.00 Bottom Packers & Anchor
Total Tool Length:	44.00				



**TRILOBITE
TESTING, INC.**

DRILL STEM TEST REPORT

FLUID SUMMARY

Gore Oil Co.

32-9s-17w Rooks,KS

PO Box 2757
Wichita, KS 67202

Ganoung B #3

Job Ticket: 55764

DST#: 2

ATTN: Chuck Schmaltz

Test Start: 2013.10.29 @ 16:54:00

Mud and Cushion Information

Mud Type: Gel Chem

Cushion Type:

Oil API:

deg API

Mud Weight: 9.00 lb/gal

Cushion Length:

ft

Water Salinity:

ppm

Viscosity: 59.00 sec/qt

Cushion Volume:

bbbl

Water Loss: 7.98 in³

Gas Cushion Type:

Resistivity: ohm.m

Gas Cushion Pressure:

psig

Salinity: 3500.00 ppm

Filter Cake: inches

Recovery Information

Recovery Table

Length ft	Description	Volume bbl
5.00	M, 100%M	0.025

Total Length: 5.00 ft Total Volume: 0.025 bbl

Num Fluid Samples: 0

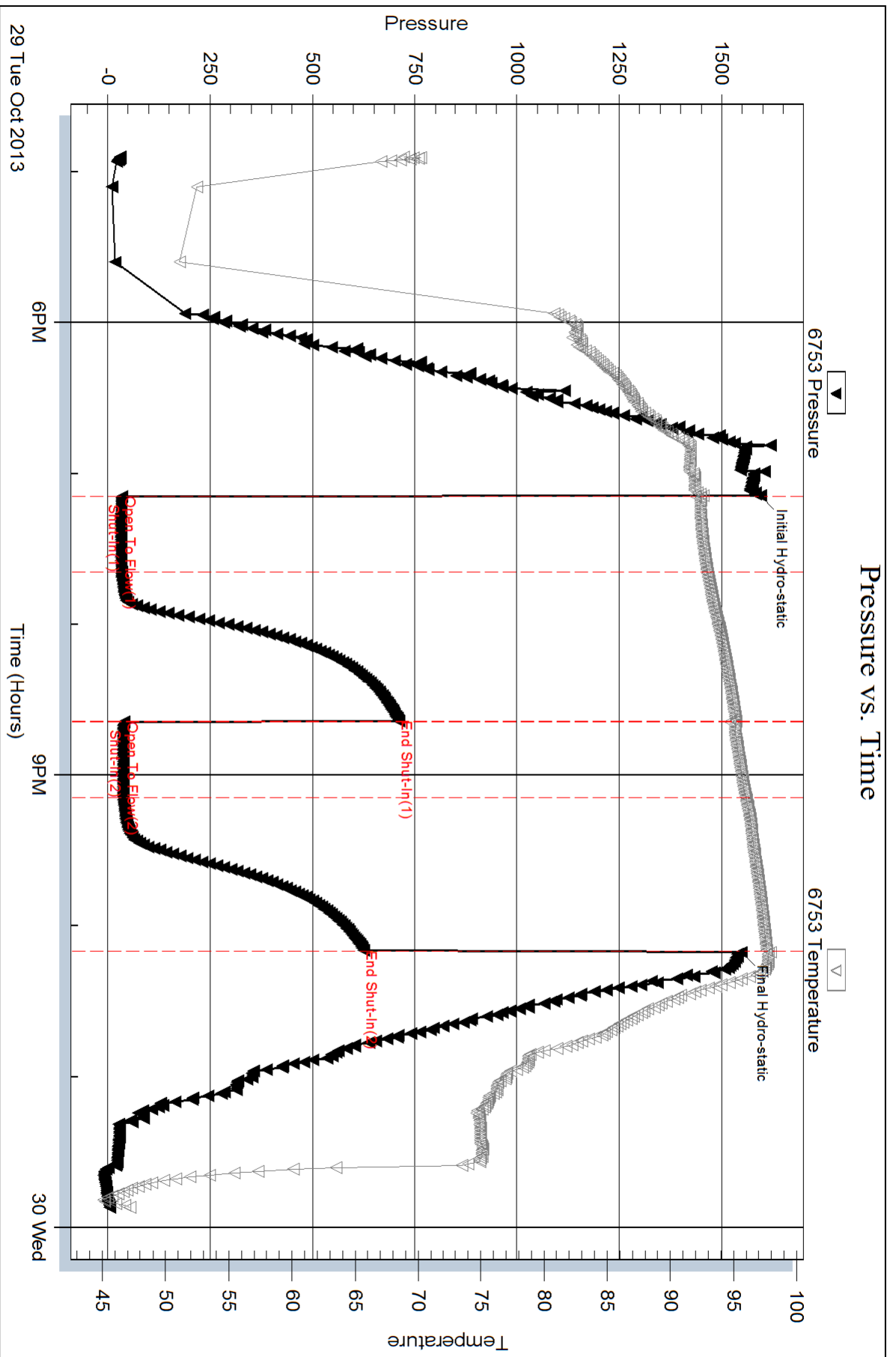
Num Gas Bombs: 0

Serial #:

Laboratory Name:

Laboratory Location:

Recovery Comments:



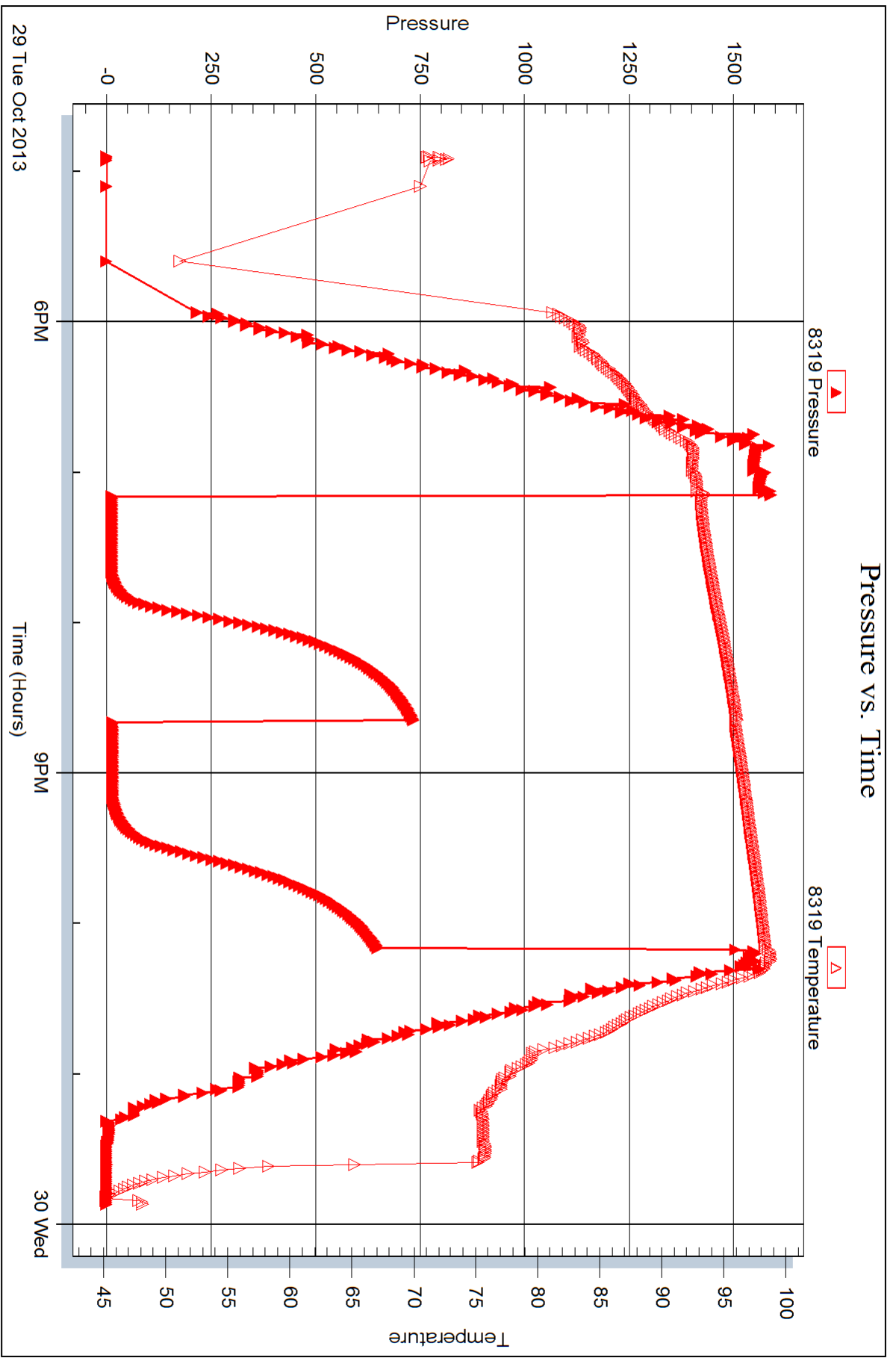
Serial #: 8319

Inside

Gore Oil Co.

Ganoung B#3

DST Test Number: 2



Triobite Testing, Inc

Ref. No: 55764

Printed: 2013.11.01 @ 09:24:38



DRILL STEM TEST REPORT

Prepared For: **Gore Oil Co.**

PO Box 2757
Wichita, KS 67202

ATTN: Chuck Schmaltz

Ganoung B #3

32-9s-17w Rooks,KS

Start Date: 2013.10.30 @ 09:13:17

End Date: 2013.10.30 @ 17:58:47

Job Ticket #: 55765 DST #: 3

Trilobite Testing, Inc

PO Box 362 Hays, KS 67601

ph: 785-625-4778 fax: 785-625-5620

Printed: 2013.11.01 @ 09:23:46



TRILOBITE TESTING, INC.

DRILL STEM TEST REPORT

Gore Oil Co.
 PO Box 2757
 Wichita, KS 67202
 ATTN: Chuck Schmalz

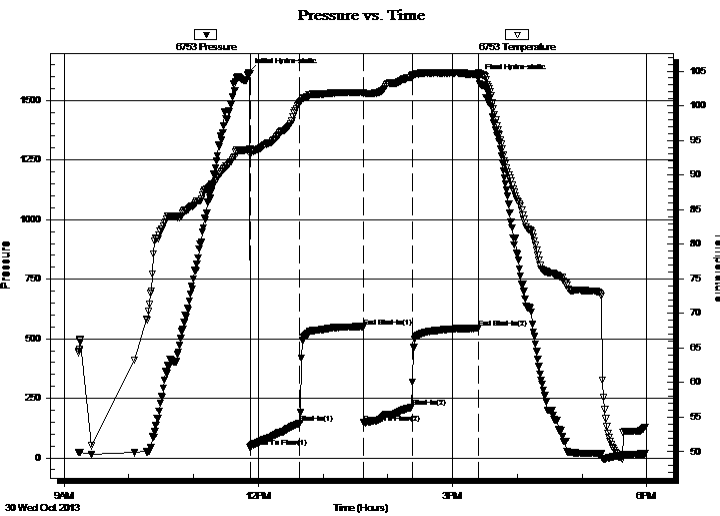
32-9s-17w Rooks,KS
Ganoung B #3
 Job Ticket: 55765 **DST#: 3**
 Test Start: 2013.10.30 @ 09:13:17

GENERAL INFORMATION:

Formation: **Lansing**
 Deviated: No Whipstock: ft (KB)
 Time Tool Opened: 11:52:17
 Time Test Ended: 17:58:47
 Interval: **3338.00 ft (KB) To 3396.00 ft (KB) (TVD)**
 Total Depth: 3396.00 ft (KB) (TVD)
 Hole Diameter: 7.88 inches Hole Condition: Fair
 Test Type: Conventional Bottom Hole (Reset)
 Tester: Brannan L
 Unit No: 59
 Reference Elevations: 2102.00 ft (KB)
 2094.00 ft (CF)
 KB to GR/CF: 8.00 ft

Serial #: 6753 Outside
 Press @ Run Depth: 214.21 psig @ 3360.00 ft (KB) Capacity: 8000.00 psig
 Start Date: 2013.10.30 End Date: 2013.10.30 Last Calib.: 2013.10.30
 Start Time: 09:13:22 End Time: 17:58:47 Time On Btm: 2013.10.30 @ 11:51:02
 Time Off Btm: 2013.10.30 @ 15:24:02

TEST COMMENT: 45- IF- BOB 10 mins
 60- ISI- Built to 3 1/2"
 45- FF- BOB 10 mins
 60- FSI- Built to 1"



PRESSURE SUMMARY

Time (Min.)	Pressure (psig)	Temp (deg F)	Annotation
0	1617.35	93.67	Initial Hydro-static
2	43.33	92.88	Open To Flow (1)
48	145.97	100.46	Shut-In(1)
107	550.97	101.91	End Shut-In(1)
107	147.46	101.76	Open To Flow (2)
152	214.21	104.26	Shut-In(2)
213	543.85	104.49	End Shut-In(2)
213	1590.23	104.75	Final Hydro-static

Recovery

Length (ft)	Description	Volume (bbl)
95.00	GO, 15%G 85%O	1.03
125.00	GOCM, 10%G 10%O 80%M	1.71
190.00	MW, 10%M 90%W	2.60
0.00	285' GIP	0.00

* Recovery from multiple tests

Gas Rates

Choke (inches)	Pressure (psig)	Gas Rate (Mcf/d)



**TRILOBITE
TESTING, INC.**

DRILL STEM TEST REPORT

TOOL DIAGRAM

Gore Oil Co.

32-9s-17w Rooks,KS

PO Box 2757
Wichita, KS 67202

Ganoung B #3

Job Ticket: 55765

DST#: 3

ATTN: Chuck Schmaltz

Test Start: 2013.10.30 @ 09:13:17

Tool Information

Drill Pipe:	Length: 3317.00 ft	Diameter: 3.75 inches	Volume: 45.31 bbl	Tool Weight: 2000.00 lb
Heavy Wt. Pipe:	Length: ft	Diameter: 2.75 inches	Volume: - bbl	Weight set on Packer: 25000.00 lb
Drill Collar:	Length: 31.00 ft	Diameter: 2.25 inches	Volume: 0.15 bbl	Weight to Pull Loose: 62000.00 lb
			<u>Total Volume: - bbl</u>	Tool Chased 0.00 ft
Drill Pipe Above KB:	30.00 ft			String Weight: Initial 58000.00 lb
Depth to Top Packer:	3338.00 ft			Final 60000.00 lb
Depth to Bottom Packer:	ft			
Interval between Packers:	58.00 ft			
Tool Length:	78.00 ft			
Number of Packers:	2	Diameter: 6.75 inches		

Tool Comments:

Tool Description	Length (ft)	Serial No.	Position	Depth (ft)	Accum. Lengths
------------------	-------------	------------	----------	------------	----------------

Change Over Sub	1.00			3319.00	
Shut In Tool	5.00			3324.00	
Hydraulic tool	5.00			3329.00	
Packer	5.00			3334.00	20.00 Bottom Of Top Packer
Packer	4.00			3338.00	
Stubb	1.00			3339.00	
Perforations	21.00			3360.00	
Recorder	0.00	8319	Inside	3360.00	
Recorder	0.00	6753	Outside	3360.00	
Change Over Sub	1.00			3361.00	
Drill Pipe	31.00			3392.00	
Change Over Sub	1.00			3393.00	
Bullnose	3.00			3396.00	58.00 Bottom Packers & Anchor

Total Tool Length: 78.00



**TRILOBITE
TESTING, INC.**

DRILL STEM TEST REPORT

FLUID SUMMARY

Gore Oil Co.

32-9s-17w Rooks,KS

PO Box 2757
Wichita, KS 67202

Ganoung B #3

Job Ticket: 55765

DST#: 3

ATTN: Chuck Schmaltz

Test Start: 2013.10.30 @ 09:13:17

Mud and Cushion Information

Mud Type: Gel Chem

Cushion Type:

Oil API:

35 deg API

Mud Weight: 9.00 lb/gal

Cushion Length:

ft

Water Salinity:

65000 ppm

Viscosity: 51.00 sec/qt

Cushion Volume:

bbbl

Water Loss: 8.37 in³

Gas Cushion Type:

Resistivity: ohm.m

Gas Cushion Pressure:

psig

Salinity: 3500.00 ppm

Filter Cake: inches

Recovery Information

Recovery Table

Length ft	Description	Volume bbbl
95.00	GO, 15%G 85%O	1.027
125.00	GOCM, 10%G 10%O 80%M	1.708
190.00	MW, 10%M 90%W	2.596
0.00	285' GIP	0.000

Total Length: 410.00 ft

Total Volume: 5.331 bbl

Num Fluid Samples: 0

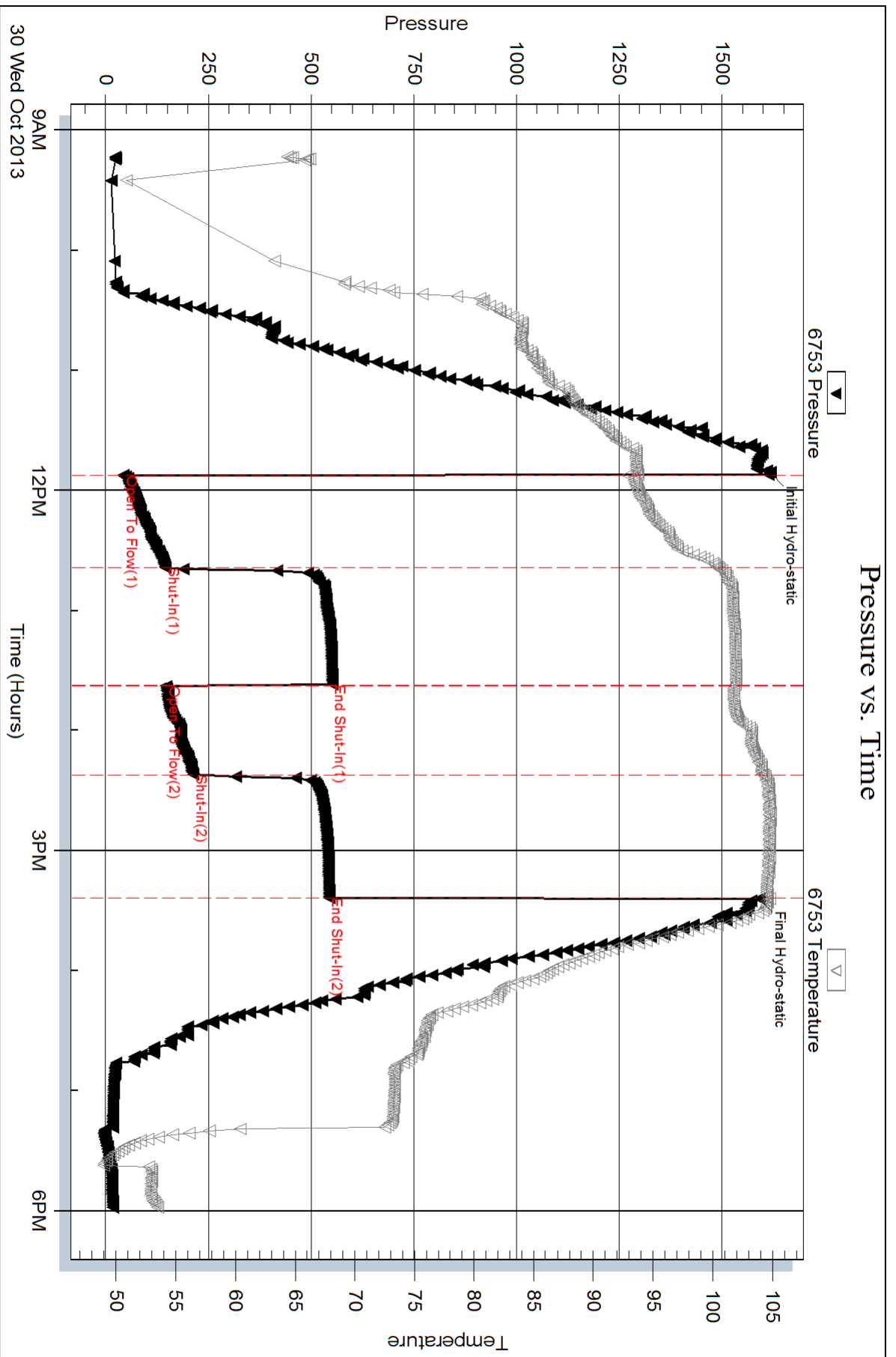
Num Gas Bombs: 0

Serial #:

Laboratory Name:

Laboratory Location:

Recovery Comments:



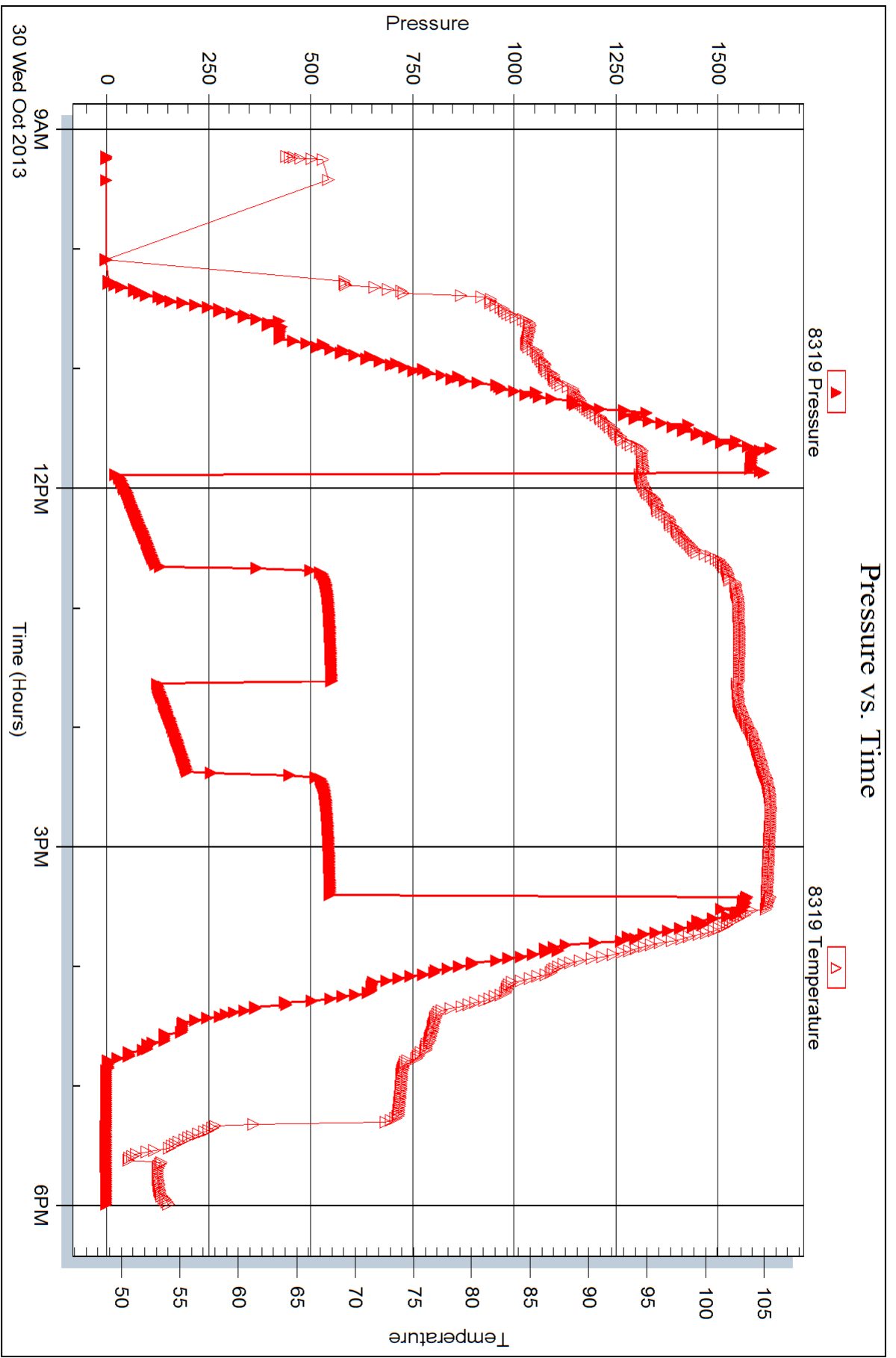
Serial #: 8319

Inside

Gore Oil Co.

Ganoung B#3

DST Test Number: 3



Trilobite Testing, Inc

Ref. No: 55765

Printed: 2013.11.01 @ 09:23:48



DRILL STEM TEST REPORT

Prepared For: **Gore Oil Co.**

PO Box 2757
Wichita, KS 67202

ATTN: Chuck Schmaltz

Ganoung B #3

32-9s-17w Rooks,KS

Start Date: 2013.10.31 @ 03:48:27

End Date: 2013.10.31 @ 12:00:42

Job Ticket #: 55766 DST #: 4

Trilobite Testing, Inc
PO Box 362 Hays, KS 67601
ph: 785-625-4778 fax: 785-625-5620

Printed: 2013.11.01 @ 09:19:42

Gore Oil Co.
32-9s-17w Rooks,KS
Ganoung B #3
DST # 4
KC
2013.10.31



TRILOBITE TESTING, INC.

DRILL STEM TEST REPORT

Gore Oil Co.
 PO Box 2757
 Wichita, KS 67202
 ATTN: Chuck Schmalz

32-9s-17w Rooks,KS
Ganoung B #3
 Job Ticket: 55766 **DST#: 4**
 Test Start: 2013.10.31 @ 03:48:27

GENERAL INFORMATION:

Formation: **KC**
 Deviated: No Whipstock: ft (KB)
 Time Tool Opened: 06:32:27
 Time Test Ended: 12:00:42
 Interval: **3391.00 ft (KB) To 3500.00 ft (KB) (TVD)**
 Total Depth: 3310.00 ft (KB) (TVD)
 Hole Diameter: 7.88 inches Hole Condition: Fair
 Test Type: Conventional Bottom Hole (Reset)
 Tester: Brannan L
 Unit No: 59
 Reference Elevations: 2102.00 ft (KB)
 2094.00 ft (CF)
 KB to GR/CF: 8.00 ft

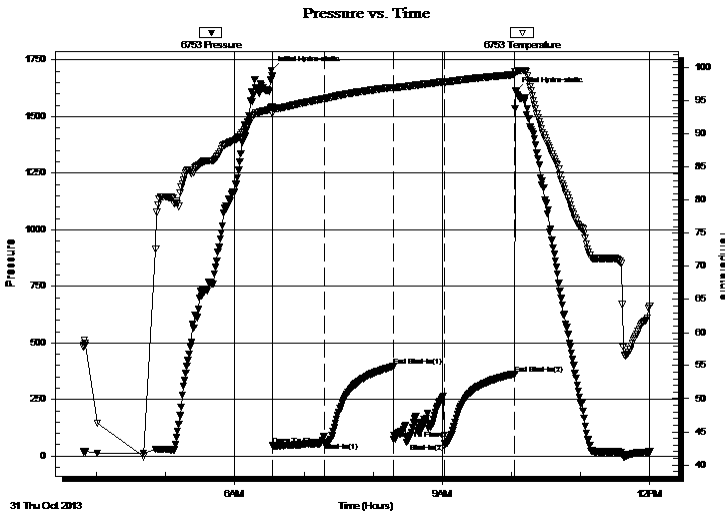
Serial #: 6753

Outside

Press @ Run Depth: 55.67 psig @ 3401.00 ft (KB) Capacity: 8000.00 psig
 Start Date: 2013.10.31 End Date: 2013.10.31 Last Calib.: 2013.10.31
 Start Time: 03:48:32 End Time: 12:00:41 Time On Btm: 2013.10.31 @ 06:31:27
 Time Off Btm: 2013.10.31 @ 10:03:42

TEST COMMENT: 45- IF- Built to 1" in 5 mins and maintained throughout
 60- IS- No blow
 45- FF- No blow
 60- FSI- No blow

PRESSURE SUMMARY



Time (Min.)	Pressure (psig)	Temp (deg F)	Annotation
0	1703.59	94.03	Initial Hydro-static
1	47.00	93.08	Open To Flow (1)
46	59.15	95.34	Shut-In(1)
106	396.02	97.04	End Shut-In(1)
106	72.56	96.83	Open To Flow (2)
151	55.67	97.79	Shut-In(2)
212	362.99	98.98	End Shut-In(2)
213	1611.97	99.37	Final Hydro-static

Recovery

Length (ft)	Description	Volume (bbl)
40.00	Mw / show of oil, 100%M	0.28

* Recovery from multiple tests

Gas Rates

Choke (inches)	Pressure (psig)	Gas Rate (Mcf/d)



**TRILOBITE
TESTING, INC.**

DRILL STEM TEST REPORT

TOOL DIAGRAM

Gore Oil Co.

32-9s-17w Rooks,KS

PO Box 2757
Wichita, KS 67202

Ganoung B #3

Job Ticket: 55766

DST#: 4

ATTN: Chuck Schmaltz

Test Start: 2013.10.31 @ 03:48:27

Tool Information

Drill Pipe:	Length: 3349.00 ft	Diameter: 3.75 inches	Volume: 45.75 bbl	Tool Weight:	2000.00 lb
Heavy Wt. Pipe:	Length: ft	Diameter: 2.75 inches	Volume: - bbl	Weight set on Packer:	25000.00 lb
Drill Collar:	Length: 31.00 ft	Diameter: 2.25 inches	Volume: 0.15 bbl	Weight to Pull Loose:	61000.00 lb
			<u>Total Volume:</u>	Tool Chased	0.00 ft
Drill Pipe Above KB:	9.00 ft			String Weight: Initial	59000.00 lb
Depth to Top Packer:	3391.00 ft			Final	59000.00 lb
Depth to Bottom Packer:	ft				
Interval between Packers:	109.00 ft				
Tool Length:	129.00 ft				
Number of Packers:	2	Diameter: 6.75 inches			

Tool Comments:

Tool Description	Length (ft)	Serial No.	Position	Depth (ft)	Accum. Lengths
------------------	-------------	------------	----------	------------	----------------

Change Over Sub	1.00			3372.00	
Shut In Tool	5.00			3377.00	
Hydraulic tool	5.00			3382.00	
Packer	5.00			3387.00	20.00 Bottom Of Top Packer
Packer	4.00			3391.00	
Stubb	1.00			3392.00	
Perforations	9.00			3401.00	
Recorder	0.00	8319	Inside	3401.00	
Recorder	0.00	6753	Outside	3401.00	
Change Over Sub	1.00			3402.00	
Drill Pipe	94.00			3496.00	
Change Over Sub	1.00			3497.00	
Bullnose	3.00			3500.00	109.00 Bottom Packers & Anchor

Total Tool Length: 129.00



**TRILOBITE
TESTING, INC.**

DRILL STEM TEST REPORT

FLUID SUMMARY

Gore Oil Co.
PO Box 2757
Wichita, KS 67202
ATTN: Chuck Schmaltz

32-9s-17w Rooks,KS
Ganoung B #3
Job Ticket: 55766 **DST#: 4**
Test Start: 2013.10.31 @ 03:48:27

Mud and Cushion Information

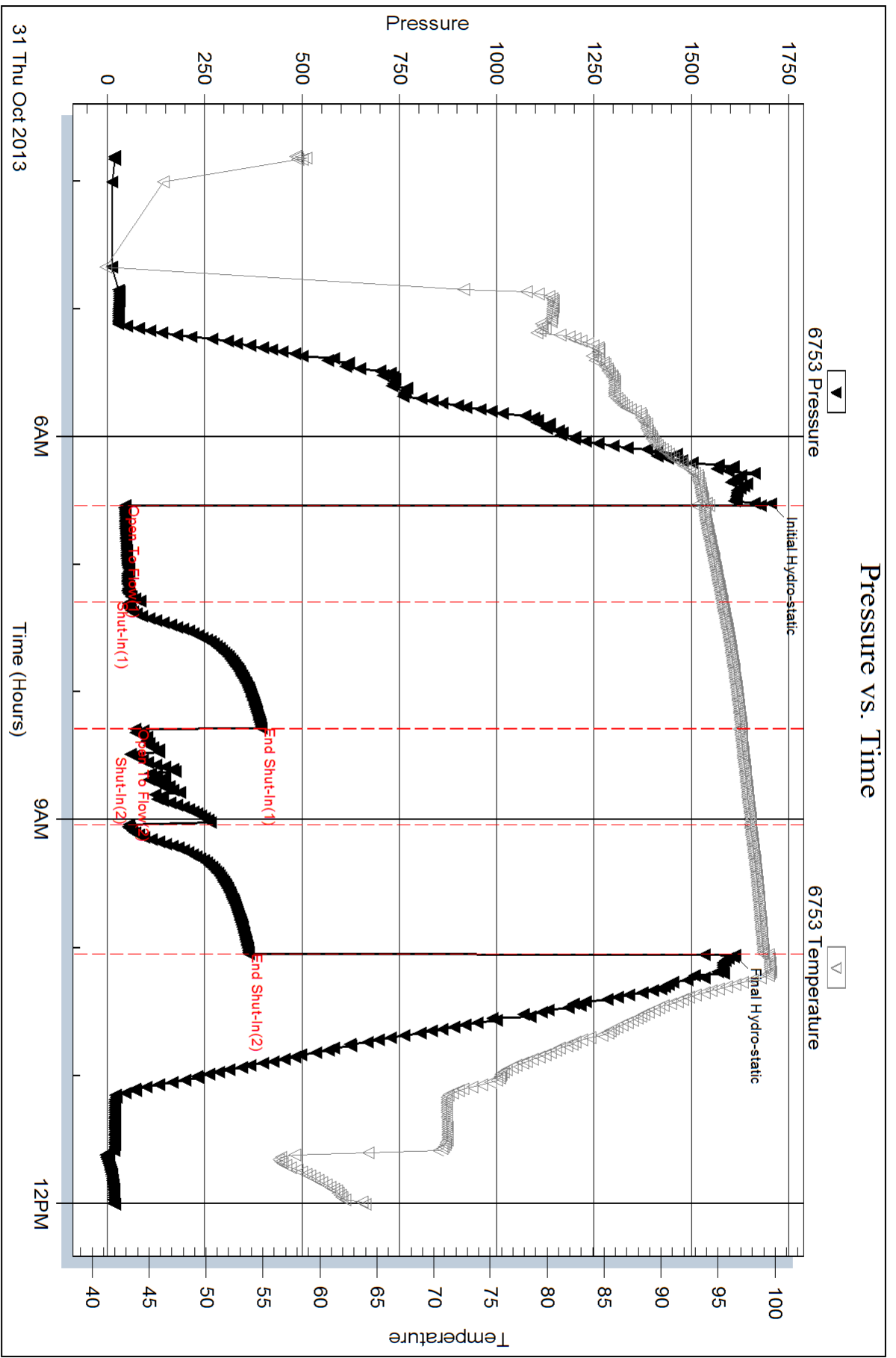
Mud Type: Gel Chem	Cushion Type:	Oil API:	deg API
Mud Weight: 9.00 lb/gal	Cushion Length: ft	Water Salinity:	ppm
Viscosity: 48.00 sec/qt	Cushion Volume: bbl		
Water Loss: 8.39 in ³	Gas Cushion Type:		
Resistivity: ohm.m	Gas Cushion Pressure: psig		
Salinity: 3500.00 ppm			
Filter Cake: inches			

Recovery Information

Recovery Table

Length ft	Description	Volume bbl
40.00	Mw/ show of oil, 100%M	0.275

Total Length: 40.00 ft Total Volume: 0.275 bbl
 Num Fluid Samples: 0 Num Gas Bombs: 0 Serial #:
 Laboratory Name: Laboratory Location:
 Recovery Comments:



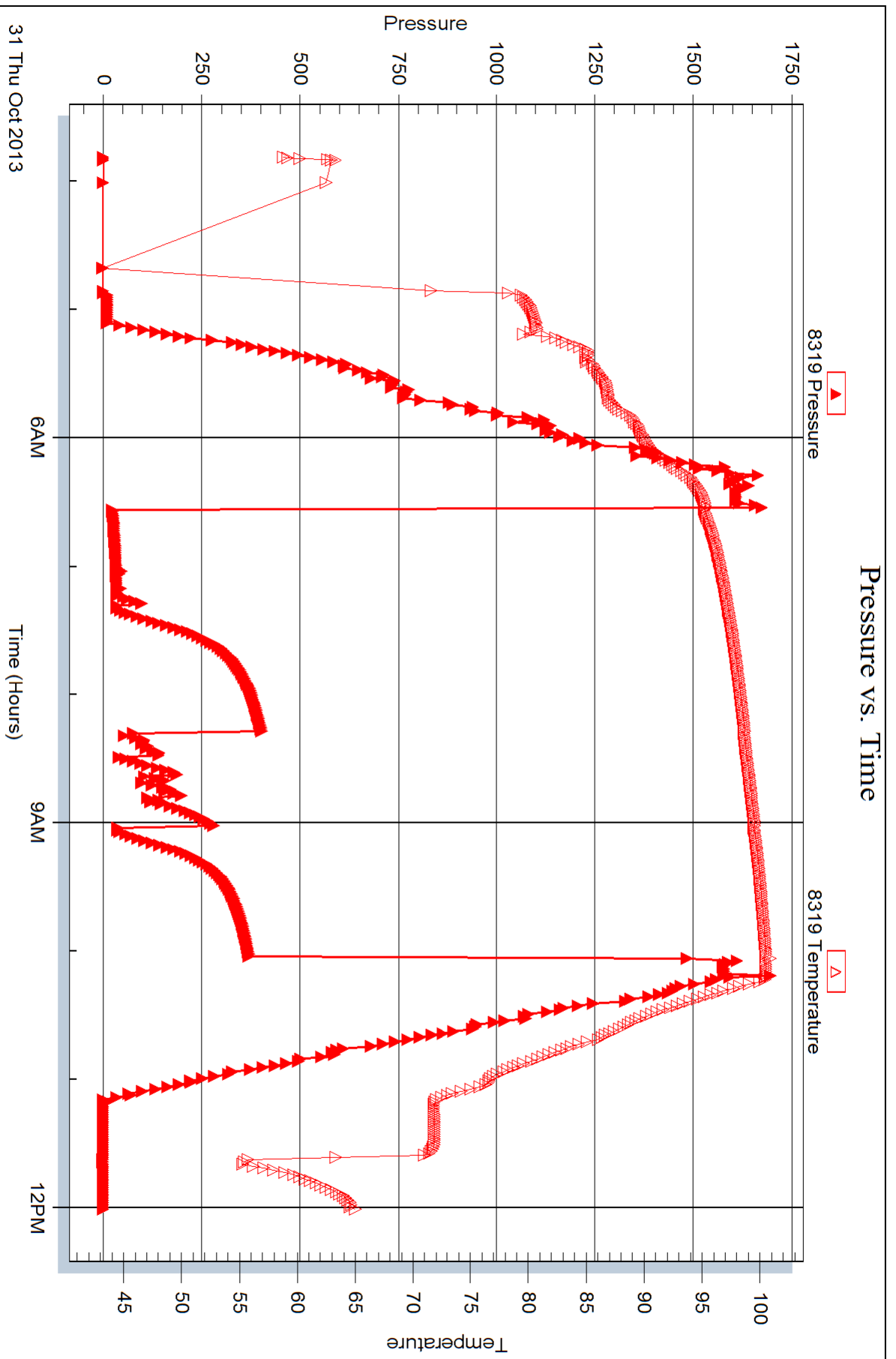
Serial #: 8319

Inside

Gore Oil Co.

Ganoung B#3

DST Test Number: 4



Trilobite Testing, Inc

Ref. No: 55766

Printed: 2013.11.01 @ 09:19:43



TRILOBITE TESTING INC.

1515 Commerce Parkway • Hays, Kansas 67601

Test Ticket

NO. **55763**

Well Name & No. Gandyng B #3 Test No. 1 Date 10/28/13
 Company Gore Oil Co. Elevation 2102 KB 2094 GL
 Address 202 S. St. Francis PO Box 2257 Wichita, KS 67202
 Co. Rep / Geo. Chuck Schmaltz Rig Maverick #108
 Location: Sec. 32 Twp. 9 S Rge. 17 W Co. Rooks State KS

Interval Tested 3226 - 3310 Zone Tested Lansing
 Anchor Length 84' Drill Pipe Run 3194 Mud Wt. 8.8
 Top Packer Depth 3221 Drill Collars Run 31 Vis 51
 Bottom Packer Depth 3226 Wt. Pipe Run _____ WL 8.4
 Total Depth 3310 Chlorides 3500 ppm System LCM 2#

Blow Description IF - Built to 2.5"
FSI - No blow
FE - Built to 1"
FSI - No blow

Rec	Feet of	%gas	%oil	%water	%mud
<u>75</u>	<u>WCM</u>			<u>20</u>	<u>80</u>
Rec	Feet of	%gas	%oil	%water	%mud
Rec	Feet of	%gas	%oil	%water	%mud
Rec	Feet of	%gas	%oil	%water	%mud

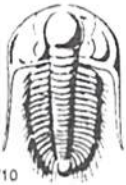
Rec Total 75 BHT 100° Gravity _____ API RW .5 @ 53 °F Chlorides 18000 ppm

(A) Initial Hydrostatic 1562 Test 1150 T-On Location 2115
 (B) First Initial Flow 51 Jars _____ T-Started 2246
 (C) First Final Flow 70 Safety Joint _____ T-Open 0311
 (D) Initial Shut-In 855 Circ Sub _____ T-Pulled 0644
 (E) Second Initial Flow 71 Hourly Standby _____ T-Out 0927
 (F) Second Final Flow 84 Mileage CG RT 102.30 Comments _____
 (G) Final Shut-In 841 Sampler _____
 (H) Final Hydrostatic 1495 Straddle _____ Ruined Shale Packer _____

Initial Open 45 Shale Packer _____ Ruined Packer _____
 Initial Shut-In 60 Extra Packer _____ Extra Copies _____
 Final Flow 45 Extra Recorder _____ Sub Total 0
 Final Shut-In 60 Day Standby _____ Total 1252.30
 Accessibility _____ MP/DST Disc't _____
 Sub Total 1252.30

Approved By _____ Our Representative Bannon L

Trilobite Testing Inc. shall not be liable for damaged of any kind of the property or personnel of the one for whom a test is made, or for any loss suffered or sustained, directly or indirectly, through the use of its equipment, or its statements or opinion concerning the results of any test, tools lost or damaged in the hole shall be paid for at cost by the party for whom the test is made.



TRILOBITE TESTING INC.

1515 Commerce Parkway • Hays, Kansas 67601

Test Ticket

NO. 55764

Well Name & No. Ganong B#3 Test No. 2 Date 10/29/13
 Company Gore Oil Co. Elevation 2102 KB 2094 GL
 Address 202 S. St. Francis PO Box 2757 Wichita, KS 67202
 Co. Rep / Geo. Chuck Schmalz Rig Maverick 108
 Location: Sec. 32 Twp. 9s Rge. 17w Co. Rooks State KS

Interval Tested 3312-3336 Zone Tested Lansing
 Anchor Length 24' Drill Pipe Run 3285 Mud Wt. 9.1
 Top Packer Depth 3307 Drill Collars Run 31 Vis 56
 Bottom Packer Depth 3312 Wt. Pipe Run — WL 8.0
 Total Depth 3336 Chlorides 3500 ppm System LCM 3 1/2"

Blow Description IF - Weak surface blow
ISI - No blow
FF - No blow
FSTI - No blow

Rec	Feet of	%gas	%oil	%water	%mud
<u>5</u>	<u>M</u>				<u>100</u>
Rec	Feet of	%gas	%oil	%water	%mud
Rec	Feet of	%gas	%oil	%water	%mud
Rec	Feet of	%gas	%oil	%water	%mud

Rec Total 5' BHT 98° Gravity — API RW — @ — °F Chlorides — ppm

(A) Initial Hydrostatic 1595 Test 1150 T-On Location 1630
 (B) First Initial Flow 36 Jars — T-Started 1654
 (C) First Final Flow 34 Safety Joint — T-Open 1909
 (D) Initial Shut-In 711 Circ Sub — T-Pulled 2209
 (E) Second Initial Flow 40 Hourly Standby — T-Out 2352
 (F) Second Final Flow 39 Mileage 66 RT 102.30 Comments —
 (G) Final Shut-In 625 Sampler —
 (H) Final Hydrostatic 1548 Straddle — Ruined Shale Packer —

Initial Open 30 Shale Packer — Ruined Packer —
 Initial Shut-In 60 Extra Packer — Extra Copies —
 Final Flow 30 Extra Recorder — Sub Total 0
 Final Shut-In 60 Day Standby — Total 1252.30
 Accessibility — MP/DST Disc't —
 Sub Total 1252.30

Approved By — Our Representative Brannan L

Trilobite Testing Inc. shall not be liable for damaged of any kind of the property or personnel of the one for whom a test is made, or for any loss suffered or sustained, directly or indirectly, through the use of its equipment, or its statements or opinion concerning the results of any test, tools lost or damaged in the hole shall be paid for at cost by the party for whom the test is made.



TRILOBITE TESTING INC.

1515 Commerce Parkway • Hays, Kansas 67601

Test Ticket

NO. 55765

4/10

Well Name & No. Canonig B#3 Test No. 3 Date 10/30/13
 Company Gore Oil Co. Elevation 2102 KB 2094 GL
 Address 202 S. St. Francis PO Box 2757 Wichita, KS 67202
 Co. Rep / Geo. Chuck Schmaltz Rig Maverick 108
 Location: Sec. 32 Twp. 9s Rge. 17w Co. Rooks State KS

Interval Tested 3338-3396 Zone Tested Lansing
 Anchor Length 58' Drill Pipe Run 3317 Mud Wt. 8.9
 Top Packer Depth 3333 Drill Collars Run 31 Vis 59
 Bottom Packer Depth 3338 Wt. Pipe Run WL 8.0
 Total Depth 3396 Chlorides 3500 ppm System LCM 3 1/2 #

Blow Description IF-BOB 10 mins
FSI-Built to 3.5"
FF-BOB 10 mins
FSI-Built to 1"

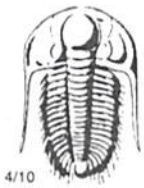
Rec	Feet of	%gas	%oil	%water	%mud
<u>95</u>	<u>GO</u>	<u>15</u>	<u>85</u>		
<u>125</u>	<u>GOCM</u>	<u>10</u>	<u>10</u>		<u>80</u>
<u>190</u>	<u>MW</u>			<u>90</u>	<u>10</u>
	<u>285' GIP</u>	<u>100</u>			

Rec Total 410' BHT 105° Gravity 35 API RW .15 @ 51 °F Chlorides 65000 ppm
 (A) Initial Hydrostatic 1617 Test 1150 T-On Location 0900
 (B) First Initial Flow 43 Jars T-Started 0913
 (C) First Final Flow 146 Safety Joint T-Open 1152
 (D) Initial Shut-In 551 Circ Sub T-Pulled 1522
 (E) Second Initial Flow 147 Hourly Standby T-Out 1758
 (F) Second Final Flow 214 Mileage 66 RT 102.30
 (G) Final Shut-In 544 Sampler
 (H) Final Hydrostatic 1590 Straddle Ruined Shale Packer
 Shale Packer Ruined Packer
 Extra Packer Extra Copies

Initial Open 45
 Initial Shut-In 60
 Final Flow 45
 Final Shut-In 60
 Sub Total 0
 Total 1252.30
 MP/DST Disc't
 Sub Total 1252.30

Approved By Our Representative Brannan L

Trilobite Testing Inc. shall not be liable for damaged of any kind of the property or personnel of the one for whom a test is made, or for any loss suffered or sustained, directly or indirectly, through the use of its equipment, or its statements or opinion concerning the results of any test, tools lost or damaged in the hole shall be paid for at cost by the party for whom the test is made.



TRILOBITE TESTING INC.

1515 Commerce Parkway • Hays, Kansas 67601

Test Ticket

NO. 55766

Well Name & No. Ganong B#3 Test No. 4 Date 10/31/13
 Company Gore Oil Co. Elevation 2102 KB 2994 GL
 Address 202 S. St. Francis PO Box 2757 Wichita, KS 67202
 Co. Rep / Geo. Chuck Schmalz Rig Maverick 108
 Location: Sec. 32 Twp. 9s Rge. 17w Co. Rooks State KS

Interval Tested 3391-3500 Zone Tested KC
 Anchor Length 109' Drill Pipe Run 3349 Mud Wt. 8.9
 Top Packer Depth 3386 Drill Collars Run 31 Vis 48
 Bottom Packer Depth 3391 Wt. Pipe Run _____ WL 8.0
 Total Depth 3500 Chlorides 3500 ppm System LCM 2#

Blow Description IF - Built to 1" in 5 mins + maintained blow throughout
ISI - No blow
FF - No blow
PSI - No blow

Rec	Feet of	%gas	%oil	%water	%mud
<u>40</u>	<u>NI w/ show of oil</u>				<u>100</u>
Rec	Feet of	%gas	%oil	%water	%mud
Rec	Feet of	%gas	%oil	%water	%mud
Rec	Feet of	%gas	%oil	%water	%mud
Rec	Feet of	%gas	%oil	%water	%mud

Rec Total 40' BHT 99° Gravity _____ API RW _____ @ _____ °F Chlorides _____ ppm

(A) Initial Hydrostatic 1704 Test 1150 T-On Location 0324
 (B) First Initial Flow 47 Jars _____ T-Started 0348
 (C) First Final Flow 59 Safety Joint _____ T-Open 0632
 (D) Initial Shut-In 396 Circ Sub _____ T-Pulled 1002
 (E) Second Initial Flow 73 Hourly Standby _____ T-Out 1200
 (F) Second Final Flow 56 Mileage 66 RT x 2 ^{204.60} Comments Loaded tools
 (G) Final Shut-In 363 Sampler _____ 10/31 @ 2000
 (H) Final Hydrostatic 1612 Straddle _____
 Shale Packer _____ Ruined Shale Packer _____
 Extra Packer _____ Ruined Packer _____
 Extra Recorder _____
 Day Standby _____
 Accessibility _____

Initial Open 45
 Initial Shut-In 60
 Final Flow 45
 Final Shut-In 60
 Sub Total 1354.60
 Total 1354.60
 MP/DST Disc't _____

Approved By _____ Our Representative Brannan L

Trilobite Testing Inc. shall not be liable for damaged of any kind of the property or personnel of the one for whom a test is made, or for any loss suffered or sustained, directly or indirectly, through the use of its equipment, or its statements or opinion concerning the results of any test, tools lost or damaged in the hole shall be paid for at cost by the party for whom the test is made.