



TRILOBITE TESTING, INC.

DRILL STEM TEST REPORT

Culbreath Oil & Gas, LLC

9-8s-25w Sheridan, KS

1532 S Peoria Ave.
Tulsa, OK 74120

Toll #1-9

ATTN: Steve Murphy

Job Ticket: 57514

DST#: 1

Test Start: 2014.04.04 @ 12:38:00

GENERAL INFORMATION:

Formation: **LKC "G"**

Deviated: No Whipstock: ft (KB)

Time Tool Opened: 00:06:45

Time Test Ended: 06:58:15

Test Type: Conventional Bottom Hole (Initial)

Tester: Phillip Gage

Unit No: 73

Interval: 3790.00 ft (KB) To 3820.00 ft (KB) (TVD)

Reference Elevations: 2416.00 ft (KB)

Total Depth: 3820.00 ft (KB) (TVD)

2406.00 ft (CF)

Hole Diameter: 7.88 inches Hole Condition: Fair

KB to GR/CF: 10.00 ft

Serial #: 8940 Outside

Press @ Run Depth: 240.24 psig @ 3817.00 ft (KB)

Capacity: 8000.00 psig

Start Date: 2014.04.04

End Date:

2014.04.05

Last Calib.:

2014.04.05

Start Time: 12:38:05

End Time:

06:58:14

Time On Btm:

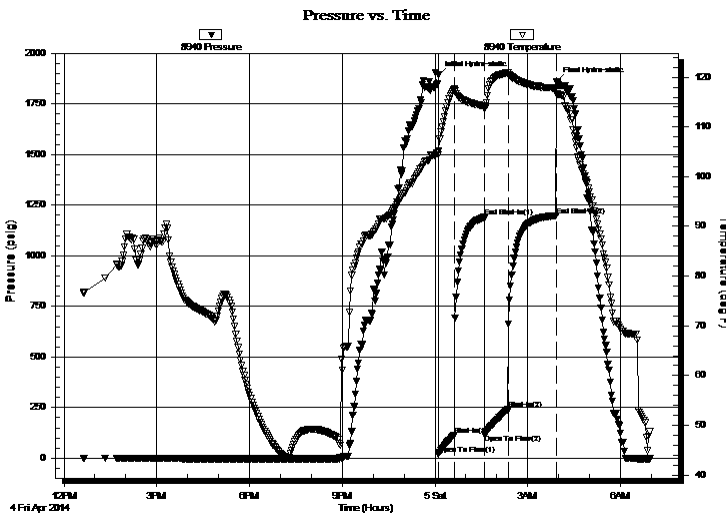
2014.04.05 @ 00:06:30

Time Off Btm:

2014.04.05 @ 03:56:30

TEST COMMENT: 30-IF-BOB in 13 mins
60-ISI-No Return
45-FF-BOB in 14 mins
90-FSI-No Return

PRESSURE SUMMARY



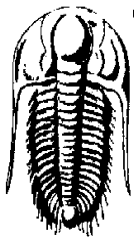
Time (Min.)	Pressure (psig)	Temp (deg F)	Annotation
0	1891.56	105.26	Initial Hydro-static
1	19.16	104.42	Open To Flow (1)
31	114.56	117.70	Shut-In(1)
90	1190.17	114.21	End Shut-In(1)
91	117.31	113.62	Open To Flow (2)
135	240.24	120.89	Shut-In(2)
229	1196.29	117.73	End Shut-In(2)
230	1859.31	116.75	Final Hydro-static

Recovery

Gas Rates

Length (ft)	Description	Volume (bbl)
378.00	MW, 10% m, 90% w	5.30
63.00	MW, 40% m, 60% w	0.88
20.00	WM, 30% w, 70% m	0.28

	Choke (inches)	Pressure (psig)	Gas Rate (Mcf/d)



TRILOBITE TESTING, INC.

DRILL STEM TEST REPORT

Culbreath Oil & Gas, LLC

1532 S Peoria Ave.
Tulsa, OK 74120

ATTN: Steve Murphy

9-8s-25w Sheridan, KS

Toll #1-9

Job Ticket: 57514

DST#: 1

Test Start: 2014.04.04 @ 12:38:00

GENERAL INFORMATION:

Formation: **LKC "G"**

Deviated: No Whipstock: ft (KB)

Time Tool Opened: 00:06:45

Time Test Ended: 06:58:15

Test Type: Conventional Bottom Hole (Initial)

Tester: Phillip Gage

Unit No: 73

Interval: 3790.00 ft (KB) To 3820.00 ft (KB) (TVD)

Reference Elevations: 2416.00 ft (KB)

Total Depth: 3820.00 ft (KB) (TVD)

2406.00 ft (CF)

Hole Diameter: 7.88 inches Hole Condition: Fair

KB to GR/CF: 10.00 ft

Serial #: 8648

Inside

Press @ Run Depth: psig @ 3817.00 ft (KB)

Capacity: 8000.00 psig

Start Date: 2014.04.04

End Date:

2014.04.05

Last Calib.:

2014.04.05

Start Time: 12:38:05

End Time:

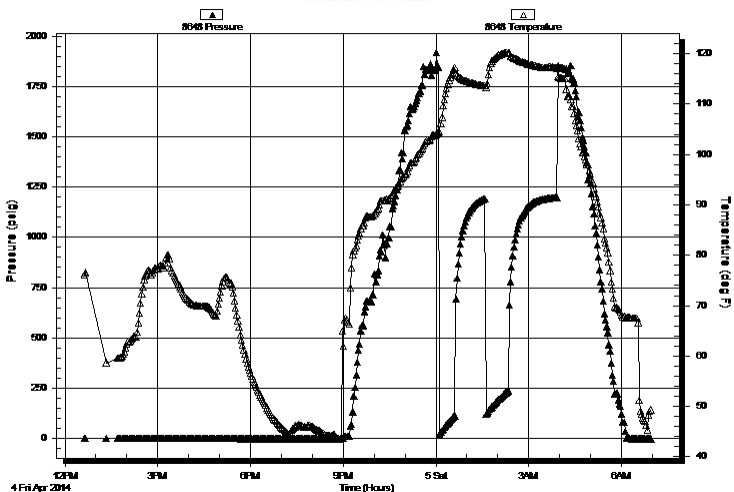
06:58:14

Time On Btm:

Time Off Btm:

TEST COMMENT: 30-IF-BOB in 13 mins
60-ISI-No Return
45-FF-BOB in 14 mins
90-FSI-No Return

Pressure vs. Time



PRESSURE SUMMARY

Time (Min.)	Pressure (psig)	Temp (deg F)	Annotation
-------------	-----------------	--------------	------------

Recovery

Length (ft)	Description	Volume (bbl)
378.00	MW, 10% m, 90% w	5.30
63.00	MW, 40% m, 60% w	0.88
20.00	WM, 30% w, 70% m	0.28

Gas Rates

Choke (inches)	Pressure (psig)	Gas Rate (Mcf/d)
----------------	-----------------	------------------



**TRILOBITE
TESTING, INC.**

DRILL STEM TEST REPORT

FLUID SUMMARY

Culbreath Oil & Gas, LLC

9-8s-25w Sheridan, KS

1532 S Peoria Ave.
Tulsa, OK 74120

Toll #1-9

Job Ticket: 57514

DST#: 1

ATTN: Steve Murphy

Test Start: 2014.04.04 @ 12:38:00

Mud and Cushion Information

Mud Type: Gel Chem

Cushion Type:

Oil API:

deg API

Mud Weight: 9.00 lb/gal

Cushion Length:

ft

Water Salinity:

ppm

Viscosity: 50.00 sec/qt

Cushion Volume:

bbbl

Water Loss: 6.40 in³

Gas Cushion Type:

Resistivity: ohm.m

Gas Cushion Pressure:

psig

Salinity: 1200.00 ppm

Filter Cake: inches

Recovery Information

Recovery Table

Length ft	Description	Volume bbl
378.00	MW, 10%m, 90%w	5.302
63.00	MW, 40%m, 60%w	0.884
20.00	WM, 30%w, 70%m	0.281

Total Length: 461.00 ft

Total Volume: 6.467 bbl

Num Fluid Samples: 0

Num Gas Bombs: 0

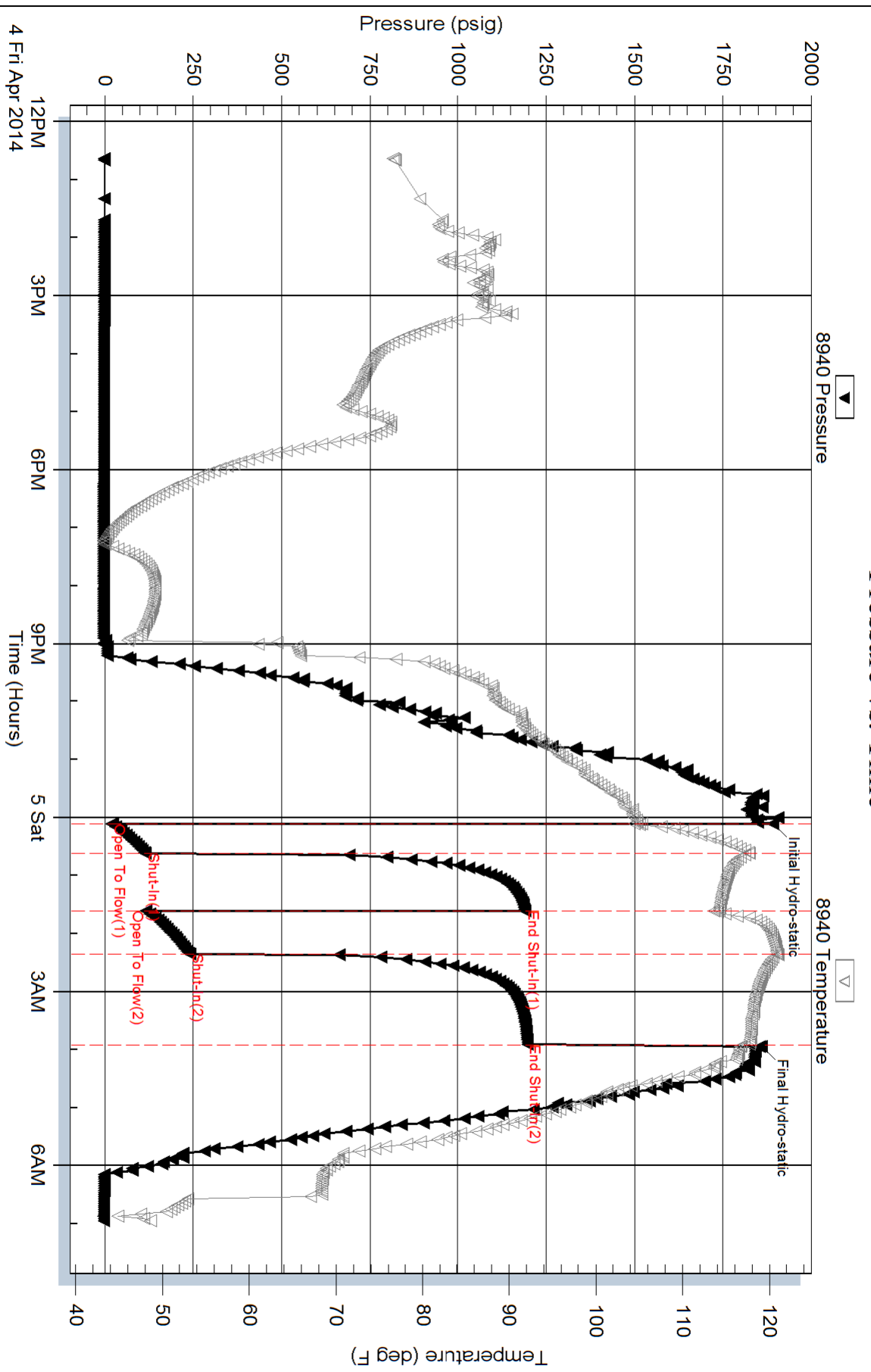
Serial #:

Laboratory Name:

Laboratory Location:

Recovery Comments:

Pressure vs. Time



Serial #: 8648

Inside

Culbreath Oil & Gas, LLC

Toll #1-9

DST Test Number: 1

