



TRILOBITE TESTING, INC.

DRILL STEM TEST REPORT

Culbreath Oil & Gas, LLS

18-9s-25w Graham, KS

1532 S Peoria Ave.
Tulsa, Ok 74120

Toll #1-18

ATTN: Steve Murphy

Job Ticket: 57516

DST#: 2

Test Start: 2014.04.07 @ 14:18:00

GENERAL INFORMATION:

Formation: **LKC "I,J"**

Deviated: No Whipstock: ft (KB)

Time Tool Opened: 19:36:45

Time Test Ended: 23:12:30

Test Type: Conventional Bottom Hole (Reset)

Tester: Phillip Gage

Unit No: 73

Interval: 4002.00 ft (KB) To 4036.00 ft (KB) (TVD)

Total Depth: 4036.00 ft (KB) (TVD)

Hole Diameter: 7.88 inches Hole Condition: Fair

Reference Elevations: 2592.00 ft (KB)

2587.00 ft (CF)

KB to GR/CF: 5.00 ft

Serial #: 8940 Outside

Press @ Run Depth: 19.09 psig @ 4033.00 ft (KB)

Start Date: 2014.04.07

End Date: 2014.04.07

Start Time: 14:18:05

End Time: 23:12:30

Capacity: 8000.00 psig

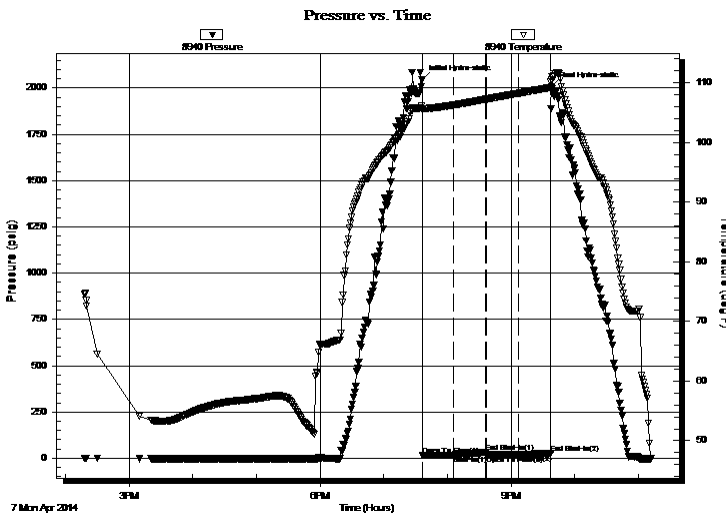
Last Calib.: 2014.04.07

Time On Btm: 2014.04.07 @ 19:36:15

Time Off Btm: 2014.04.07 @ 21:38:15

TEST COMMENT: 30-IF-Built to 3/8"
30-ISI-No Return
30-FF-No Blow
30-FSI-No Return

PRESSURE SUMMARY



Time (Min.)	Pressure (psig)	Temp (deg F)	Annotation
0	2044.18	106.11	Initial Hydro-static
1	16.37	105.44	Open To Flow (1)
30	17.42	106.28	Shut-In(1)
60	32.45	107.25	End Shut-In(1)
61	17.49	107.25	Open To Flow (2)
91	19.09	108.24	Shut-In(2)
122	27.77	109.23	End Shut-In(2)
122	2007.48	110.51	Final Hydro-static

Recovery

Length (ft)	Description	Volume (bbl)
5.00	M, 100% m	0.02

Gas Rates

Choke (inches)	Pressure (psig)	Gas Rate (Mcf/d)

* Recovery from multiple tests



**TRILOBITE
TESTING, INC.**

DRILL STEM TEST REPORT

FLUID SUMMARY

Culbreath Oil & Gas, LLS

18-9s-25w Graham, KS

1532 S Peoria Ave.
Tulsa, Ok 74120

Toll #1-18

Job Ticket: 57516

DST#: 2

ATTN: Steve Murphy

Test Start: 2014.04.07 @ 14:18:00

Mud and Cushion Information

Mud Type: Gel Chem

Cushion Type:

Oil API:

deg API

Mud Weight: 10.00 lb/gal

Cushion Length:

ft

Water Salinity:

ppm

Viscosity: 59.00 sec/qt

Cushion Volume:

bbbl

Water Loss: 6.80 in³

Gas Cushion Type:

Resistivity: ohm.m

Gas Cushion Pressure:

psig

Salinity: 3300.00 ppm

Filter Cake: inches

Recovery Information

Recovery Table

Length ft	Description	Volume bbl
5.00	M, 100% m	0.025

Total Length: 5.00 ft Total Volume: 0.025 bbl

Num Fluid Samples: 0

Num Gas Bombs: 0

Serial #:

Laboratory Name:

Laboratory Location:

Recovery Comments:

