



**TRILOBITE TESTING, INC.**

# DRILL STEM TEST REPORT

Culbreath Oil & Gas, LLS

**18-9s-25w Graham, KS**

1532 S Peoria Ave.  
Tulsa, Ok 74120

**Toll #1-18**

ATTN: Steve Murphy

Job Ticket: 56099

**DST#: 3**

Test Start: 2014.04.08 @ 07:06:00

## GENERAL INFORMATION:

Formation: **LKC "K"**  
 Deviated: No Whipstock: ft (KB)  
 Time Tool Opened: 08:42:00  
 Time Test Ended: 12:30:45  
 Interval: **4032.00 ft (KB) To 4060.00 ft (KB) (TVD)**  
 Total Depth: 4060.00 ft (KB) (TVD)  
 Hole Diameter: 7.88 inches Hole Condition: Fair  
 Test Type: Conventional Bottom Hole (Reset)  
 Tester: Cody Bloedorn  
 Unit No: 73  
 Reference Elevations: 2592.00 ft (KB)  
 2587.00 ft (CF)  
 KB to GR/CF: 5.00 ft

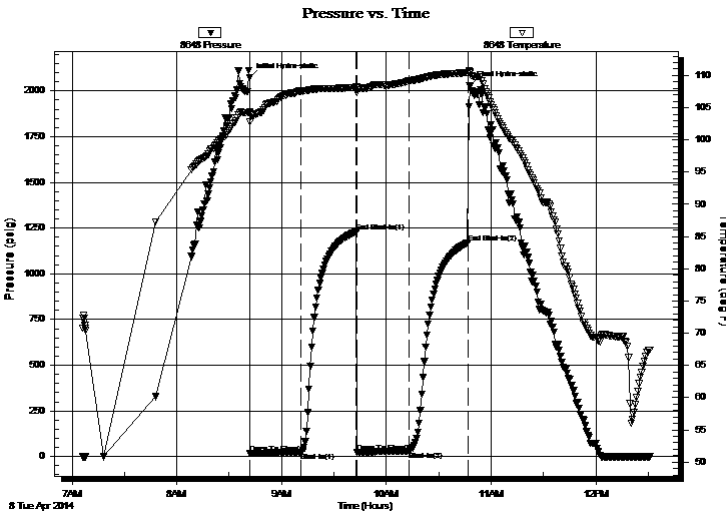
## Serial #: 8648

Inside

Press@RunDepth: 29.86 psig @ 4057.00 ft (KB) Capacity: 8000.00 psig  
 Start Date: 2014.04.08 End Date: 2014.04.08 Last Calib.: 2014.04.08  
 Start Time: 07:06:05 End Time: 12:30:44 Time On Btm: 2014.04.08 @ 08:41:45  
 Time Off Btm: 2014.04.08 @ 10:47:45

TEST COMMENT: 30 - IF- 3/4" blow  
 30 - IS- No return  
 30 - FF- Surface blow  
 30 - FS- No return

## PRESSURE SUMMARY



Time (Min.)	Pressure (psig)	Temp (deg F)	Annotation
0	2074.04	104.32	Initial Hydro-static
1	16.81	102.88	Open To Flow (1)
30	23.37	107.58	Shut-In(1)
61	1230.99	108.18	End Shut-In(1)
62	25.09	107.39	Open To Flow (2)
92	29.86	109.13	Shut-In(2)
125	1171.28	110.45	End Shut-In(2)
126	2030.35	110.65	Final Hydro-static

## Recovery

Length (ft)	Description	Volume (bbl)
10.00	Mud - with spots of oil, 100%M	0.05

\* Recovery from multiple tests

## Gas Rates

Choke (inches)	Pressure (psig)	Gas Rate (Mcf/d)



**TRILOBITE  
TESTING, INC**

# DRILL STEM TEST REPORT

**FLUID SUMMARY**

Culbreath Oil & Gas, LLS

**18-9s-25w Graham, KS**

1532 S Peoria Ave.  
Tulsa, Ok 74120

**Toll #1-18**

Job Ticket: 56099

**DST#: 3**

ATTN: Steve Murphy

Test Start: 2014.04.08 @ 07:06:00

## Mud and Cushion Information

Mud Type: Gel Chem

Cushion Type:

Oil API:

deg API

Mud Weight: 10.00 lb/gal

Cushion Length:

ft

Water Salinity:

ppm

Viscosity: 59.00 sec/qt

Cushion Volume:

bbbl

Water Loss: 6.80 in<sup>3</sup>

Gas Cushion Type:

Resistivity: ohm.m

Gas Cushion Pressure:

psig

Salinity: 3300.00 ppm

Filter Cake: inches

## Recovery Information

Recovery Table

Length ft	Description	Volume bbl
10.00	Mud - with spots of oil, 100%M	0.049

Total Length: 10.00 ft      Total Volume: 0.049 bbl

Num Fluid Samples: 0

Num Gas Bombs: 0

Serial #:

Laboratory Name:

Laboratory Location:

Recovery Comments:

### Pressure vs. Time

