



**TRILOBITE TESTING, INC.**

# DRILL STEM TEST REPORT

Culbreath Oil & Gas Company

**1-10s-26w-Graham Co**

1532 S Peoria AVE  
Tulsa OK 74120

**Mader #3-1**

Job Ticket: 57567

**DST#: 1**

ATTN: Steve Murphy

Test Start: 2014.04.15 @ 08:17:36

## GENERAL INFORMATION:

Formation: **LKC B,D,E,F**

Deviated: No Whipstock: ft (KB)

Time Tool Opened: 10:39:06

Time Test Ended: 16:06:36

Test Type: Conventional Bottom Hole (Initial)

Tester: Tate Lang

Unit No: 49

**Interval: 3860.00 ft (KB) To 3916.00 ft (KB) (TVD)**

Reference Elevations: 2581.00 ft (KB)

Total Depth: 3916.00 ft (KB) (TVD)

ft (CF)

Hole Diameter: 7.88 inches Hole Condition:

KB to GR/CF: ft

**Serial #: 8898 Outside**

Press@RunDepth: 105.55 psig @ 3881.00 ft (KB)

Capacity: 8000.00 psig

Start Date: 2014.04.15

End Date:

2014.04.15

Last Calib.: 2014.04.15

Start Time: 08:17:37

End Time:

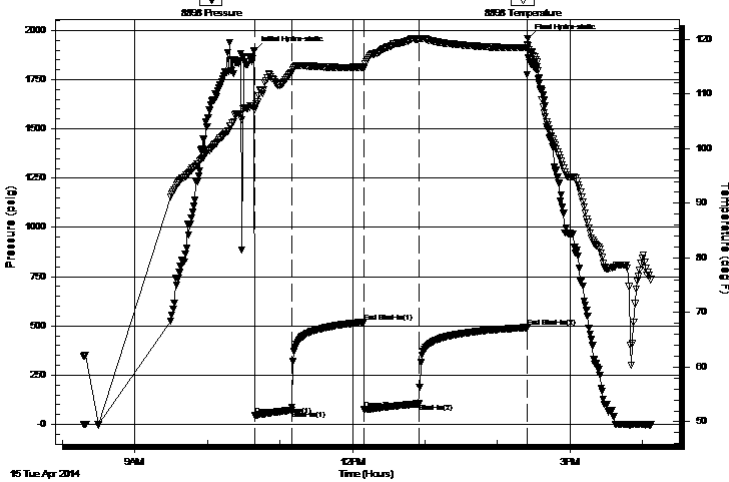
16:06:36

Time On Btm: 2014.04.15 @ 10:38:46

Time Off Btm: 2014.04.15 @ 14:24:56

**TEST COMMENT:** Fair blow built to 6 in  
Dead no blow back  
Fair blow built to 5 1/2 in  
Dead no blow back

Pressure vs. Time



## PRESSURE SUMMARY

Time (Min.)	Pressure (psig)	Temp (deg F)	Annotation
0	1898.53	107.86	Initial Hydro-static
1	46.60	107.12	Open To Flow (1)
31	72.71	113.89	Shut-In(1)
91	520.23	114.91	End Shut-In(1)
91	76.42	114.72	Open To Flow (2)
137	105.55	120.09	Shut-In(2)
226	491.88	118.44	End Shut-In(2)
227	1959.32	118.84	Final Hydro-static

## Recovery

Length (ft)	Description	Volume (bbl)
120.00	20%M 80%W	1.41
60.00	100%M	0.84
10.00	2%O 98%M Free oil on top	0.14

## Gas Rates

	Choke (inches)	Pressure (psig)	Gas Rate (Mcf/d)



**TRILOBITE  
TESTING, INC**

# DRILL STEM TEST REPORT

## FLUID SUMMARY

Culbreath Oil & Gas Company

**1-10s-26w-Graham Co**

1532 S Peoria AVE  
Tulsa OK 74120

**Mader #3-1**

Job Ticket: 57567

**DST#: 1**

ATTN: Steve Murphy

Test Start: 2014.04.15 @ 08:17:36

### Mud and Cushion Information

Mud Type: Gel Chem

Cushion Type:

Oil API:

deg API

Mud Weight: 9.00 lb/gal

Cushion Length:

ft

Water Salinity:

ppm

Viscosity: 51.00 sec/qt

Cushion Volume:

bbbl

Water Loss: 7.20 in<sup>3</sup>

Gas Cushion Type:

Resistivity: ohm.m

Gas Cushion Pressure:

psig

Salinity: 3000.00 ppm

Filter Cake: 1.00 inches

### Recovery Information

Recovery Table

Length ft	Description	Volume bbl
120.00	20%M 80%W	1.410
60.00	100%M	0.842
10.00	2%O 98%M Free oil on top	0.140

Total Length: 190.00 ft      Total Volume: 2.392 bbl

Num Fluid Samples: 0

Num Gas Bombs: 0

Serial #:

Laboratory Name:

Laboratory Location:

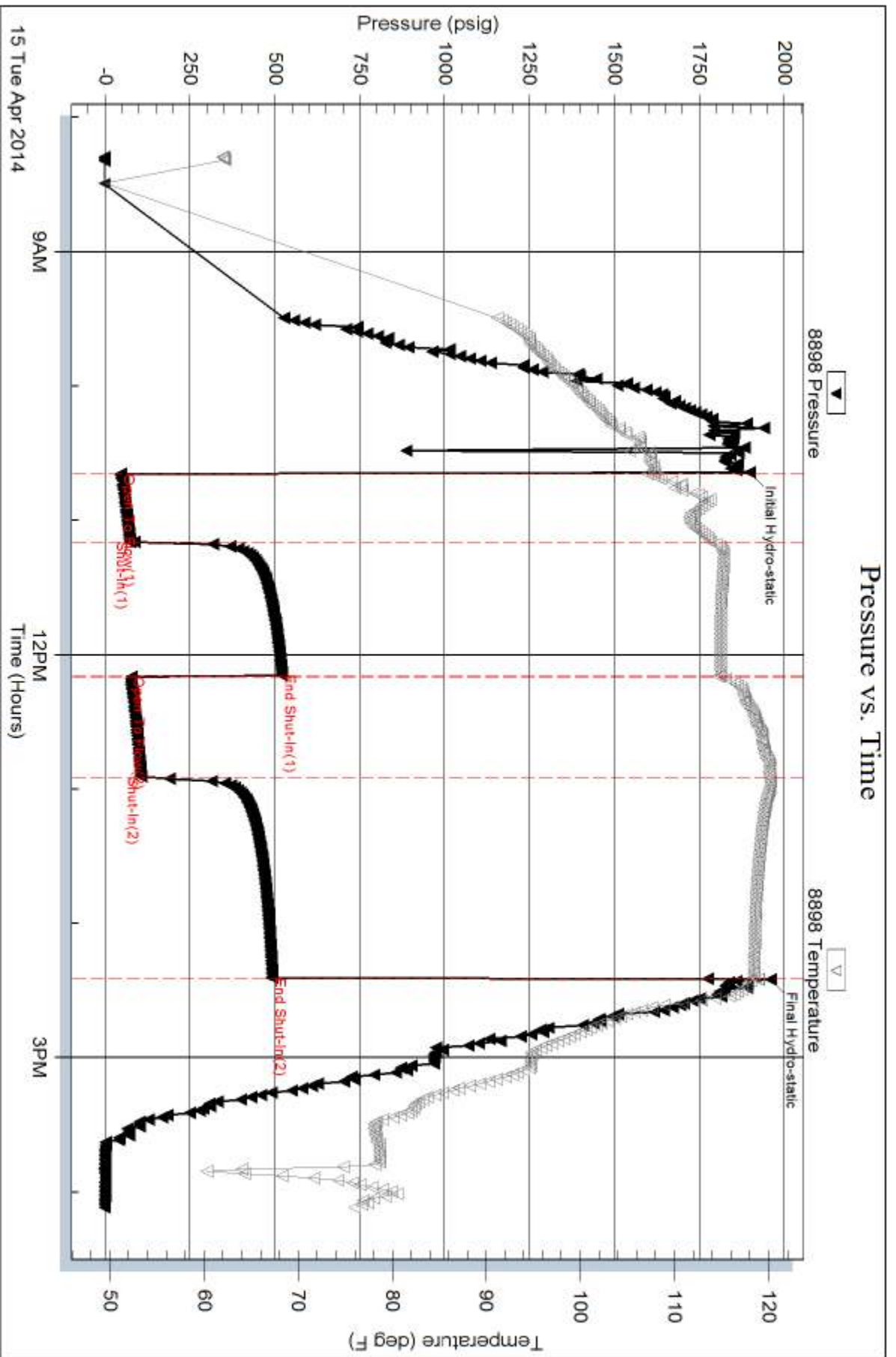
Recovery Comments:

Serial #: 8898

Outside Culbreath Oil & Gas Company

Wader #3-1

DST Test Number: 1



Triobite Testing, Inc

Ref. No: 57567

Printed: 2014.04.15 @ 16:33:09