



DRILL STEM TEST REPORT

Prepared For: **Murfin Drilling Co., Inc**

250 N. Water Suite 300
Wichita, KS 67202

ATTN: Robert Hendrix

Holle Trust #1-22

22/4s/31w Rawlins KS

Start Date: 2014.02.25 @ 17:02:00

End Date: 2014.02.26 @ 01:45:30

Job Ticket #: 53485 DST #: 1

Trilobite Testing, Inc

PO Box 362 Hays, KS 67601

ph: 785-625-4778 fax: 785-625-5620

Printed: 2014.03.03 @ 15:33:54



**TRILOBITE
TESTING, INC.**

DRILL STEM TEST REPORT

Murfin Drilling Co., Inc
250 N. Water Suite 300
Wichita, KS 67202
ATTN: Robert Hendrix

22/4s/31w Rawlins KS

Holle Trust #1-22

Job Ticket: 53485 **DST#: 1**
Test Start: 2014.02.25 @ 17:02:00

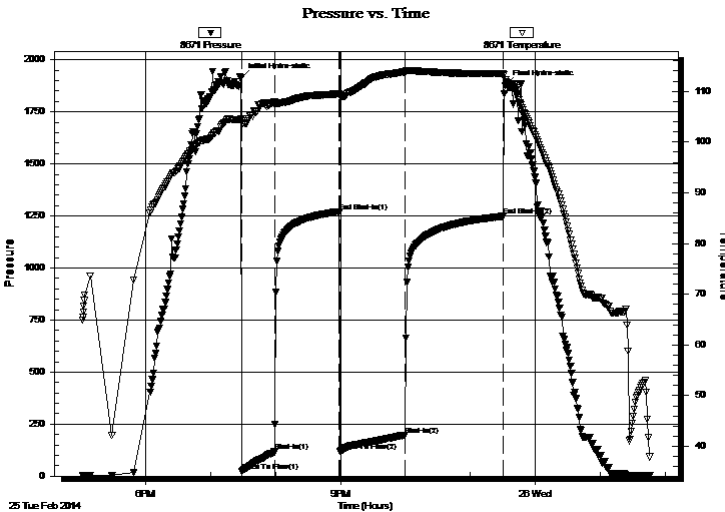
GENERAL INFORMATION:

Formation: **Toronto - Lans. "B"**
Deviated: No Whipstock: ft (KB) Test Type: Conventional Bottom Hole (Initial)
Time Tool Opened: 19:29:00 Tester: James Winder
Time Test Ended: 01:45:30 Unit No: 57
Interval: 3870.00 ft (KB) To 3952.00 ft (KB) (TVD) Reference Elevations: 2871.00 ft (KB)
Total Depth: 3952.00 ft (KB) (TVD) 2860.00 ft (CF)
Hole Diameter: 7.88 inches Hole Condition: Fair KB to GR/CF: 11.00 ft

Serial #: 8671 Inside
Press@RunDepth: 197.17 psig @ 3871.00 ft (KB) Capacity: 8000.00 psig
Start Date: 2014.02.25 End Date: 2014.02.26 Last Calib.: 2014.02.26
Start Time: 17:02:05 End Time: 01:45:30 Time On Btm: 2014.02.25 @ 19:28:45
Time Off Btm: 2014.02.25 @ 23:33:00

TEST COMMENT: 30 - IF: 1/2" Blow at open, built to 10" (Diesel in bucket)
60 - IS: No blow back
60 - FF: Blow built to BOB (11") at 40 min.
90 - FS: No blow back

PRESSURE SUMMARY



Time (Min.)	Pressure (psig)	Temp (deg F)	Annotation
0	1914.50	104.70	Initial Hydro-static
1	22.63	103.81	Open To Flow (1)
31	117.35	107.85	Shut-In(1)
90	1270.85	109.51	End Shut-In(1)
91	118.96	109.14	Open To Flow (2)
151	197.17	113.84	Shut-In(2)
242	1248.46	113.49	End Shut-In(2)
245	1883.18	111.81	Final Hydro-static

Recovery

Length (ft)	Description	Volume (bbl)
177.00	MCW 84%w, 16%m	0.87
59.00	MW 54%w, 46%m	0.29
124.00	WCM 90%m, 10%w	1.46
40.00	WM 56%m, 44%w	0.56

Gas Rates

	Choke (inches)	Pressure (psig)	Gas Rate (Mcf/d)



**TRILOBITE
TESTING, INC**

DRILL STEM TEST REPORT

TOOL DIAGRAM

Murfin Drilling Co., Inc
250 N. Water Suite 300
Wichita, KS 67202
ATTN: Robert Hendrix

22/4s/31w Rawlins KS
Holle Trust #1-22
Job Ticket: 53485 **DST#: 1**
Test Start: 2014.02.25 @ 17:02:00

Tool Information

Drill Pipe:	Length: 3596.00 ft	Diameter: 3.80 inches	Volume: 50.44 bbl	Tool Weight: 2500.00 lb
Heavy Wt. Pipe:	Length: 0.00 ft	Diameter: 0.00 inches	Volume: 0.00 bbl	Weight set on Packer: 25000.00 lb
Drill Collar:	Length: 267.00 ft	Diameter: 2.25 inches	Volume: 1.31 bbl	Weight to Pull Loose: 68000.00 lb
			<u>Total Volume: 51.75 bbl</u>	Tool Chased 0.00 ft
Drill Pipe Above KB:	21.00 ft			String Weight: Initial 64000.00 lb
Depth to Top Packer:	3870.00 ft			Final 65000.00 lb
Depth to Bottom Packer:	ft			
Interval between Packers:	82.00 ft			
Tool Length:	110.00 ft			
Number of Packers:	2	Diameter: 6.75 inches		

Tool Comments:

Tool Description	Length (ft)	Serial No.	Position	Depth (ft)	Accum. Lengths
-------------------------	--------------------	-------------------	-----------------	-------------------	-----------------------

Shut In Tool	5.00			3847.00	
Hydraulic tool	5.00			3852.00	
Jars	5.00			3857.00	
Safety Joint	3.00			3860.00	
Packer	5.00			3865.00	28.00 Bottom Of Top Packer
Packer	5.00			3870.00	
Stubb	1.00			3871.00	
Recorder	0.00	8671	Inside	3871.00	
Recorder	0.00	8320	Outside	3871.00	
Perforations	15.00			3886.00	
Blank Spacing	62.00			3948.00	
Perforations	1.00			3949.00	
Bullnose	3.00			3952.00	82.00 Bottom Packers & Anchor

Total Tool Length: 110.00



**TRILOBITE
TESTING, INC**

DRILL STEM TEST REPORT

FLUID SUMMARY

Murfin Drilling Co., Inc

22/4s/31w Rawlins KS

250 N. Water Suite 300
Wichita, KS 67202

Holle Trust #1-22

Job Ticket: 53485

DST#: 1

ATTN: Robert Hendrix

Test Start: 2014.02.25 @ 17:02:00

Mud and Cushion Information

Mud Type: Gel Chem

Cushion Type:

Oil API:

deg API

Mud Weight: 9.00 lb/gal

Cushion Length:

ft

Water Salinity:

39000 ppm

Viscosity: 58.00 sec/qt

Cushion Volume:

bbbl

Water Loss: 5.97 in³

Gas Cushion Type:

Resistivity: ohm.m

Gas Cushion Pressure:

psig

Salinity: 1300.00 ppm

Filter Cake: 2.00 inches

Recovery Information

Recovery Table

Length ft	Description	Volume bbl
177.00	MCW 84%w , 16%m	0.870
59.00	MW 54%w , 46%m	0.290
124.00	WCM 90%m, 10%w	1.457
40.00	WM 56%m, 44%w	0.561

Total Length: 400.00 ft Total Volume: 3.178 bbl

Num Fluid Samples: 0

Num Gas Bombs: 0

Serial #:

Laboratory Name:

Laboratory Location:

Recovery Comments: RW = .234 ohms @ 56.5 deg F

Chlorides = 39,000 ppm

Serial #: 8671

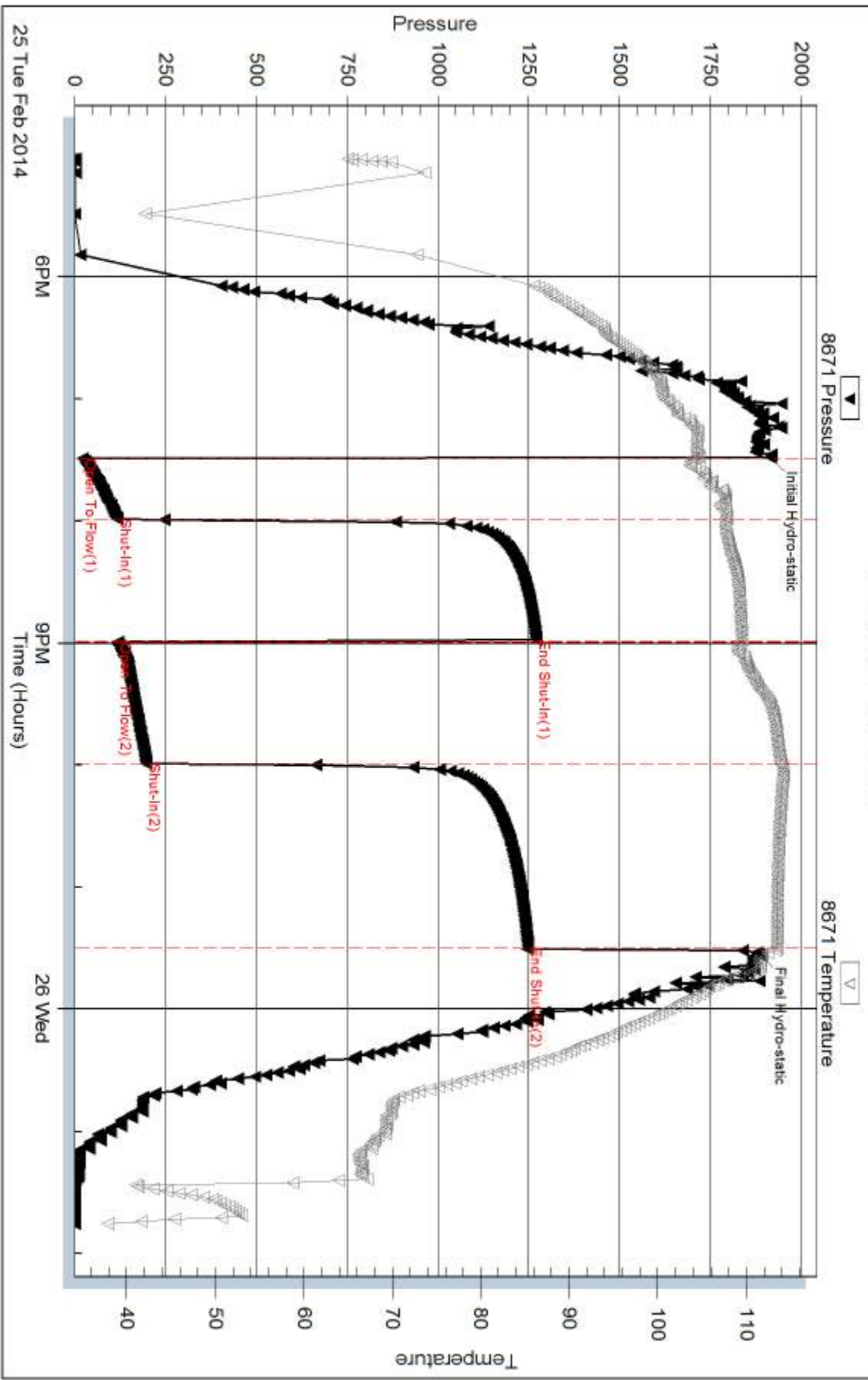
Inside

Murfin Drilling Co., Inc

Holle Trust #1-22

DST Test Number: 1

Pressure vs. Time



Triobite Testing, Inc

Ref. No: 53485

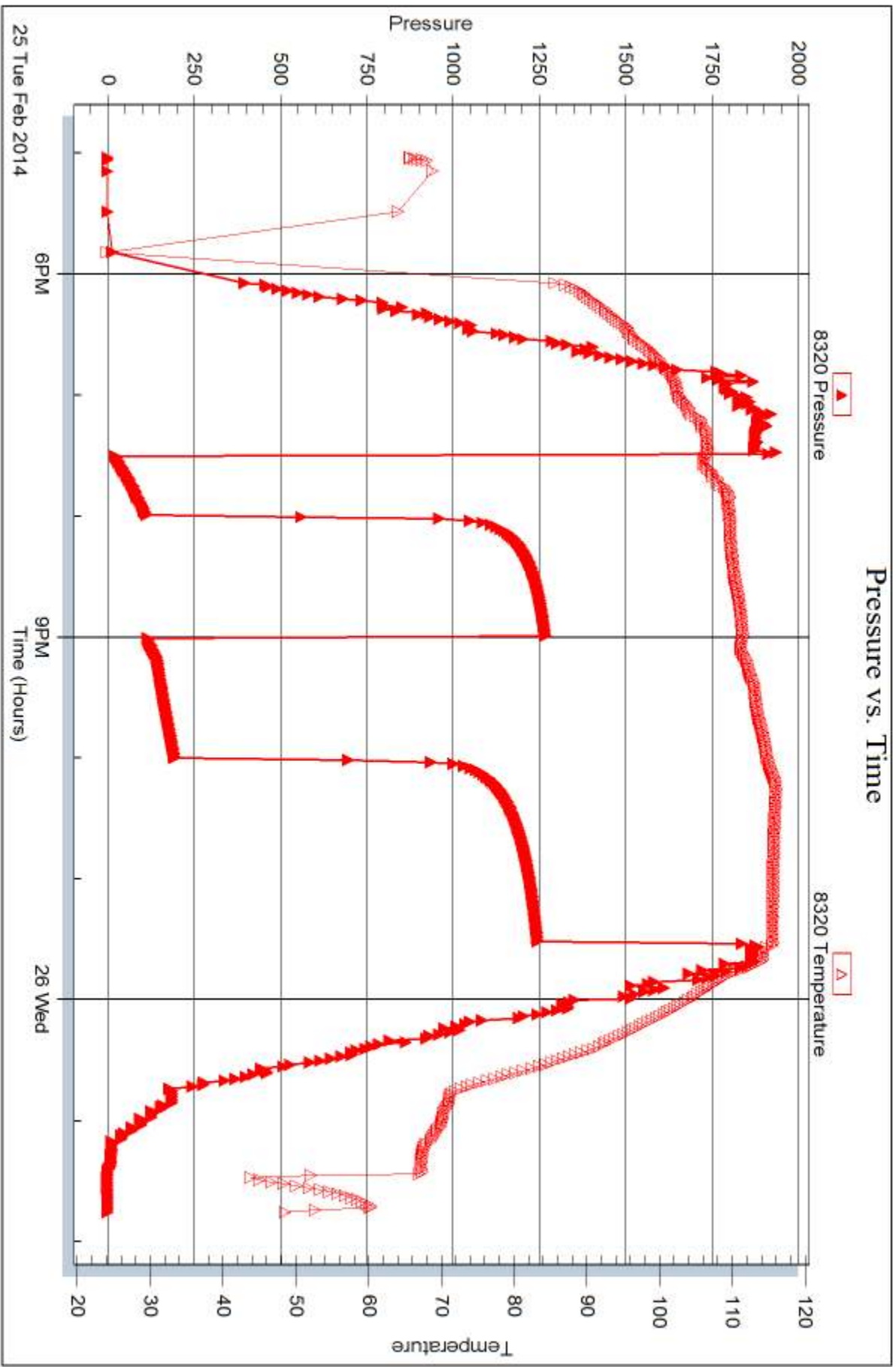
Printed: 2014.03.03 @ 15:33:57

Serial #: 8320

Outside Murfin Drilling Co., Inc

Holle Trust #1-22

DST Test Number: 1



Tribble Testing, Inc

Ref. No: 53485

Printed: 2014.03.03 @ 15:33:57



DRILL STEM TEST REPORT

Prepared For: **Murfin Drilling Co., Inc**

250 N. Water Suite 300
Wichita, KS 67202

ATTN: Robert Hendrix

Holle Trust #1-22

22/4s/31w Rawlins KS

Start Date: 2014.02.26 @ 12:30:00

End Date: 2014.02.26 @ 18:54:00

Job Ticket #: 53486 DST #: 2

Trilobite Testing, Inc
PO Box 362 Hays, KS 67601
ph: 785-625-4778 fax: 785-625-5620

Printed: 2014.03.03 @ 15:33:14



TRILOBITE TESTING, INC

DRILL STEM TEST REPORT

Murfin Drilling Co., Inc
 250 N. Water Suite 300
 Wichita, KS 67202
 ATTN: Robert Hendrix

22/4s/31w Rawlins KS

Holle Trust #1-22

Job Ticket: 53486

DST#: 2

Test Start: 2014.02.26 @ 12:30:00

GENERAL INFORMATION:

Formation: **LKC "E - F"**
 Deviated: No Whipstock: ft (KB)
 Time Tool Opened: 14:07:30
 Time Test Ended: 18:54:00
 Interval: **3967.00 ft (KB) To 3993.00 ft (KB) (TVD)**
 Total Depth: 3993.00 ft (KB) (TVD)
 Hole Diameter: 7.88 inches Hole Condition: Fair
 Test Type: Conventional Bottom Hole (Reset)
 Tester: James Winder
 Unit No: 57
 Reference Elevations: 2871.00 ft (KB)
 2860.00 ft (CF)
 KB to GR/CF: 11.00 ft

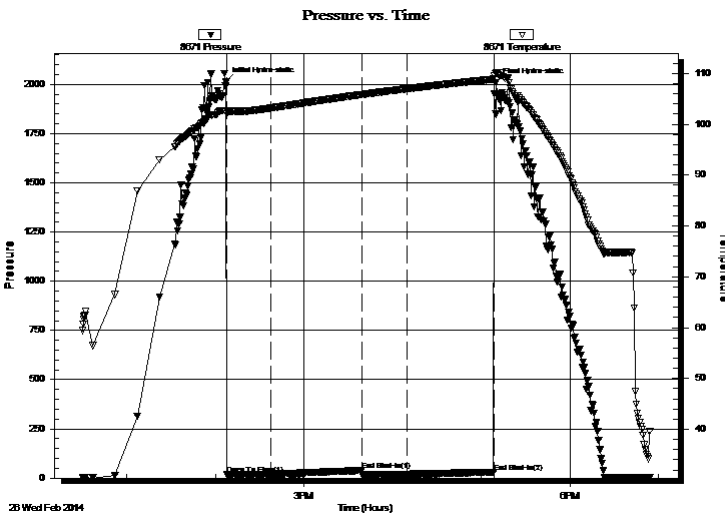
Serial #: 8671

Inside

Press@RunDepth: 20.11 psig @ 3968.00 ft (KB) Capacity: 8000.00 psig
 Start Date: 2014.02.26 End Date: 2014.02.26 Last Calib.: 2014.02.26
 Start Time: 12:30:05 End Time: 18:53:59 Time On Btm: 2014.02.26 @ 14:07:15
 Time Off Btm: 2014.02.26 @ 17:10:00

TEST COMMENT: 30 - IF: Blow built to 1/4", died back, dead at 20 min.
 60 - IS!: No blow back
 30 - FF: No blow
 60 - FS!: No blow back

PRESSURE SUMMARY



Time (Min.)	Pressure (psig)	Temp (deg F)	Annotation
0	2012.95	102.50	Initial Hydro-static
1	18.72	101.99	Open To Flow (1)
30	20.04	103.15	Shut-In(1)
92	39.39	105.83	End Shut-In(1)
93	19.87	105.84	Open To Flow (2)
123	20.11	106.96	Shut-In(2)
182	29.87	108.86	End Shut-In(2)
183	2008.40	110.19	Final Hydro-static

Recovery

Length (ft)	Description	Volume (bbl)
2.00	Mud w/oil spots 97%m, 3%o	0.01

* Recovery from multiple tests

Gas Rates

Choke (inches)	Pressure (psig)	Gas Rate (Mcf/d)



**TRILOBITE
TESTING, INC**

DRILL STEM TEST REPORT

TOOL DIAGRAM

Murfin Drilling Co., Inc
250 N. Water Suite 300
Wichita, KS 67202
ATTN: Robert Hendrix

22/4s/31w Rawlins KS
Holle Trust #1-22
Job Ticket: 53486 **DST#: 2**
Test Start: 2014.02.26 @ 12:30:00

Tool Information

Drill Pipe:	Length: 3690.00 ft	Diameter: 3.80 inches	Volume: 51.76 bbl	Tool Weight: 2500.00 lb
Heavy Wt. Pipe:	Length: 0.00 ft	Diameter: 0.00 inches	Volume: 0.00 bbl	Weight set on Packer: 25000.00 lb
Drill Collar:	Length: 267.00 ft	Diameter: 2.25 inches	Volume: 1.31 bbl	Weight to Pull Loose: 76000.00 lb
			<u>Total Volume: 53.07 bbl</u>	Tool Chased 0.00 ft
Drill Pipe Above KB:	18.00 ft			String Weight: Initial 66000.00 lb
Depth to Top Packer:	3967.00 ft			Final 66000.00 lb
Depth to Bottom Packer:	ft			
Interval between Packers:	26.00 ft			
Tool Length:	54.00 ft			
Number of Packers:	2	Diameter: 6.75 inches		

Tool Comments:

Tool Description	Length (ft)	Serial No.	Position	Depth (ft)	Accum. Lengths
-------------------------	--------------------	-------------------	-----------------	-------------------	-----------------------

Shut In Tool	5.00			3944.00	
Hydraulic tool	5.00			3949.00	
Jars	5.00			3954.00	
Safety Joint	3.00			3957.00	
Packer	5.00			3962.00	28.00 Bottom Of Top Packer
Packer	5.00			3967.00	
Stubb	1.00			3968.00	
Recorder	0.00	8671	Inside	3968.00	
Recorder	0.00	8320	Outside	3968.00	
Perforations	22.00			3990.00	
Bullnose	3.00			3993.00	26.00 Bottom Packers & Anchor

Total Tool Length: 54.00



**TRILOBITE
TESTING, INC**

DRILL STEM TEST REPORT

FLUID SUMMARY

Murfin Drilling Co., Inc

22/4s/31w Rawlins KS

250 N. Water Suite 300
Wichita, KS 67202

Holle Trust #1-22

Job Ticket: 53486

DST#: 2

ATTN: Robert Hendrix

Test Start: 2014.02.26 @ 12:30:00

Mud and Cushion Information

Mud Type: Gel Chem

Cushion Type:

Oil API:

deg API

Mud Weight: 9.00 lb/gal

Cushion Length:

ft

Water Salinity:

ppm

Viscosity: 56.00 sec/qt

Cushion Volume:

bbbl

Water Loss: 5.19 in³

Gas Cushion Type:

Resistivity: ohm.m

Gas Cushion Pressure:

psig

Salinity: 1500.00 ppm

Filter Cake: 2.00 inches

Recovery Information

Recovery Table

Length ft	Description	Volume bbl
2.00	Mud w /oil spots 97% _m , 3% _o	0.010

Total Length: 2.00 ft Total Volume: 0.010 bbl

Num Fluid Samples: 0

Num Gas Bombs: 0

Serial #:

Laboratory Name:

Laboratory Location:

Recovery Comments:

Serial #: 8671

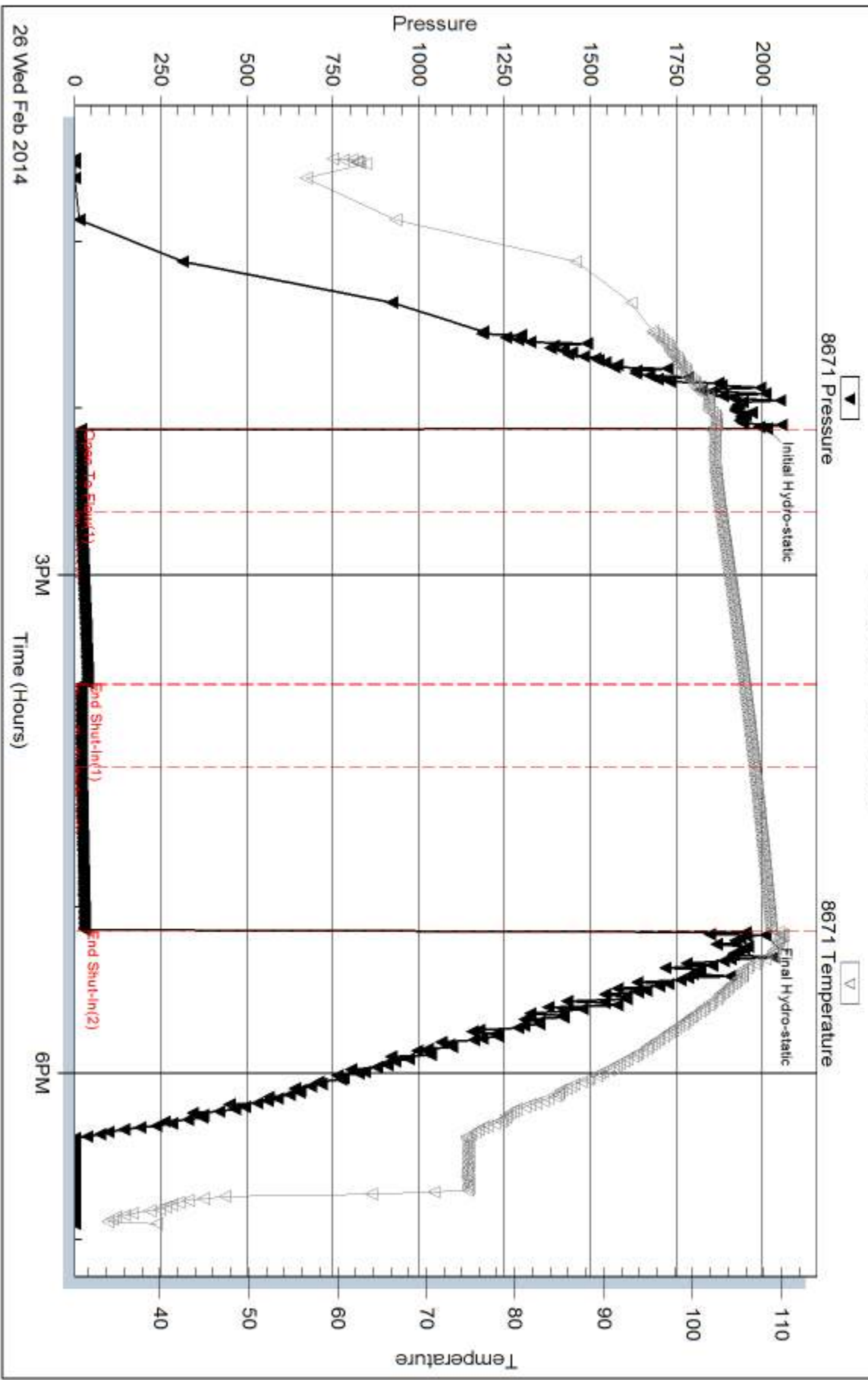
Inside

Murfin Drilling Co., Inc

Holle Trust #1-22

DST Test Number: 2

Pressure vs. Time



Triobite Testing, Inc

Ref. No: 53486

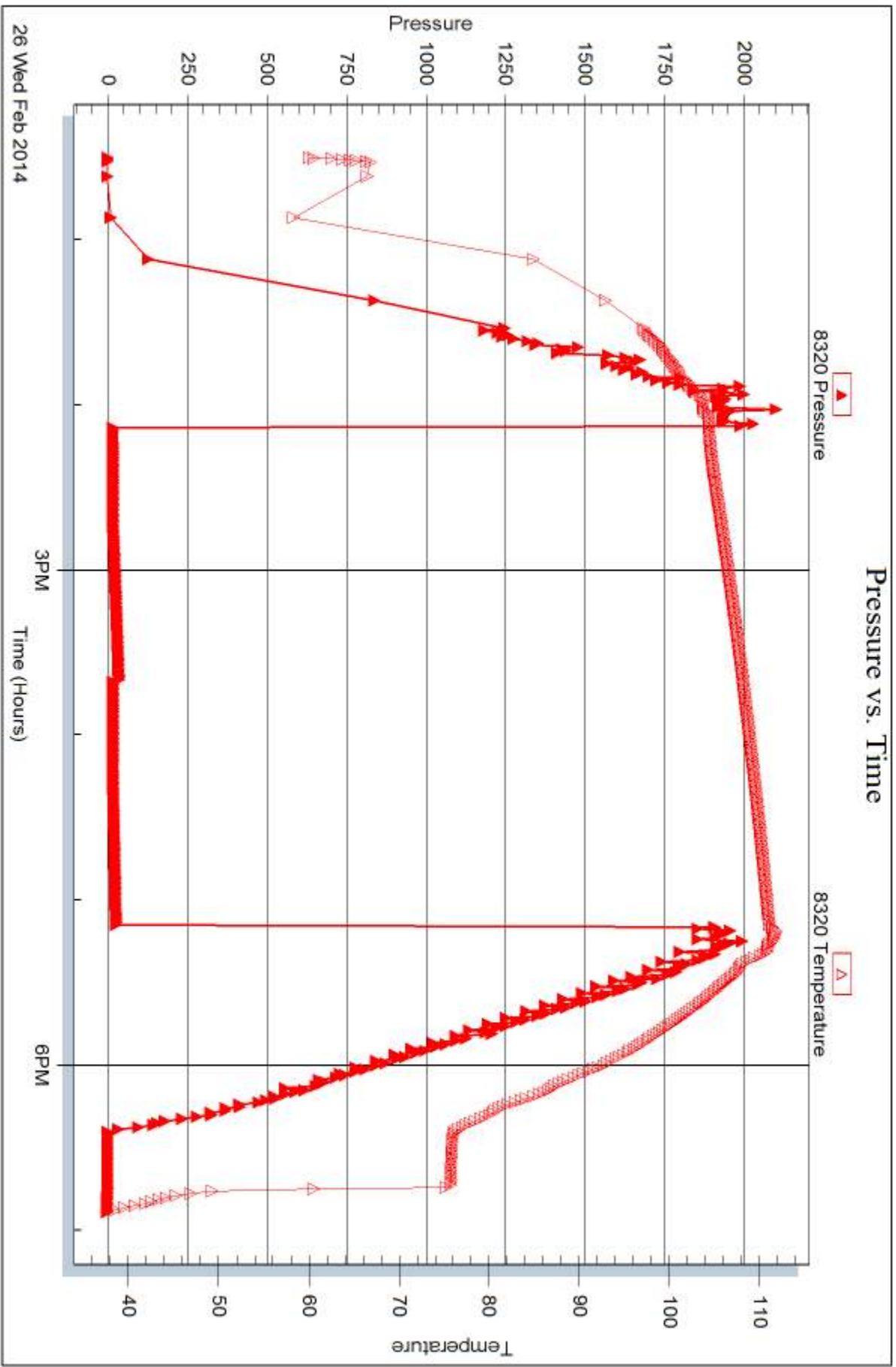
Printed: 2014.03.03 @ 15:33:16

Serial #: 8320

Outside Murfin Drilling Co., Inc

Holle Trust #1-22

DST Test Number: 2



Triobite Testing, Inc

Ref. No: 53486

Printed: 2014.03.03 @ 15:33:17



DRILL STEM TEST REPORT

Prepared For: **Murfin Drilling Co., Inc**

250 N. Water Suite 300
Wichita, KS 67202

ATTN: Robert Hendrix

Holle Trust #1-22

22/4s/31w Rawlins KS

Start Date: 2014.02.27 @ 07:43:00

End Date: 2014.02.27 @ 15:12:15

Job Ticket #: 53487 DST #: 3

Trilobite Testing, Inc
PO Box 362 Hays, KS 67601
ph: 785-625-4778 fax: 785-625-5620

Printed: 2014.03.03 @ 15:32:26

Murfin Drilling Co., Inc
22/4s/31w Rawlins KS
Holle Trust #1-22
DST # 3
LKC "G - J"
2014.02.27



TRILOBITE TESTING, INC.

DRILL STEM TEST REPORT

Murfin Drilling Co., Inc
 250 N. Water Suite 300
 Wichita, KS 67202
 ATTN: Robert Hendrix

22/4s/31w Rawlins KS

Holle Trust #1-22

Job Ticket: 53487

DST#: 3

Test Start: 2014.02.27 @ 07:43:00

GENERAL INFORMATION:

Formation: **LKC "G - J"**
 Deviated: No Whipstock: ft (KB)
 Time Tool Opened: 09:16:30
 Time Test Ended: 15:12:15
 Interval: **4000.00 ft (KB) To 4085.00 ft (KB) (TVD)**
 Total Depth: 4085.00 ft (KB) (TVD)
 Hole Diameter: 7.88 inches Hole Condition: Fair
 Test Type: Conventional Bottom Hole (Reset)
 Tester: James Winder
 Unit No: 57
 Reference Elevations: 2871.00 ft (KB)
 2860.00 ft (CF)
 KB to GR/CF: 11.00 ft

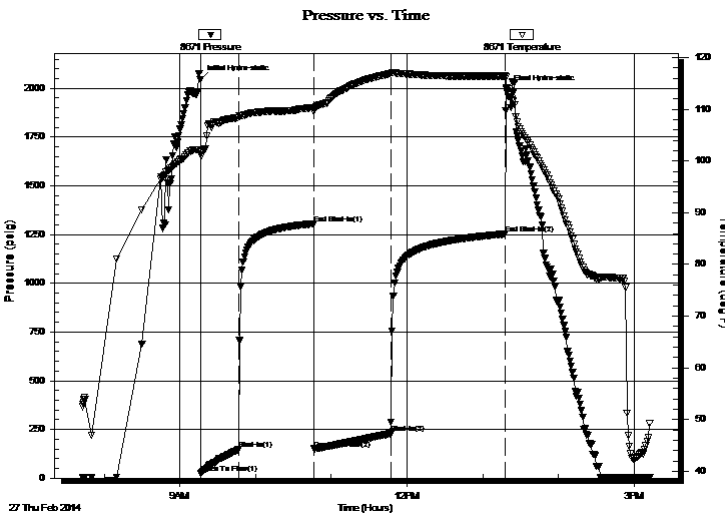
Serial #: 8671

Inside

Press@RunDepth: 228.26 psig @ 4001.00 ft (KB) Capacity: 8000.00 psig
 Start Date: 2014.02.27 End Date: 2014.02.27 Last Calib.: 2014.02.27
 Start Time: 07:43:05 End Time: 15:12:14 Time On Btm: 2014.02.27 @ 09:16:15
 Time Off Btm: 2014.02.27 @ 13:19:00

TEST COMMENT: 30 - IF: Blow built to BOB (11") at 28 min.
 60 - IS: No blow back
 60 - FF: Blow built to BOB at 32 min.
 90 - FS: No blow back

PRESSURE SUMMARY



Time (Min.)	Pressure (psig)	Temp (deg F)	Annotation
0	2043.30	101.83	Initial Hydro-static
1	25.31	101.15	Open To Flow (1)
31	147.83	108.43	Shut-In(1)
90	1304.97	110.32	End Shut-In(1)
91	150.25	110.08	Open To Flow (2)
151	228.26	116.95	Shut-In(2)
242	1252.43	116.44	End Shut-In(2)
243	1995.07	114.21	Final Hydro-static

Recovery

Length (ft)	Description	Volume (bbl)
236.00	MCW 89%w, 11%m	1.16
219.00	WM 52%m, 48%w	2.79

* Recovery from multiple tests

Gas Rates

Choke (inches)	Pressure (psig)	Gas Rate (Mcf/d)



**TRILOBITE
TESTING, INC**

DRILL STEM TEST REPORT

TOOL DIAGRAM

Murfin Drilling Co., Inc

22/4s/31w Rawlins KS

250 N. Water Suite 300
Wichita, KS 67202

Holle Trust #1-22

Job Ticket: 53487

DST#: 3

ATTN: Robert Hendrix

Test Start: 2014.02.27 @ 07:43:00

Tool Information

Drill Pipe:	Length: 3721.00 ft	Diameter: 3.80 inches	Volume: 52.20 bbl	Tool Weight: 2500.00 lb
Heavy Wt. Pipe:	Length: 0.00 ft	Diameter: 0.00 inches	Volume: 0.00 bbl	Weight set on Packer: 25000.00 lb
Drill Collar:	Length: 267.00 ft	Diameter: 2.25 inches	Volume: 1.31 bbl	Weight to Pull Loose: 70000.00 lb
			<u>Total Volume: 53.51 bbl</u>	Tool Chased 0.00 ft
Drill Pipe Above KB:	16.00 ft			String Weight: Initial 66000.00 lb
Depth to Top Packer:	4000.00 ft			Final 68000.00 lb
Depth to Bottom Packer:	ft			
Interval between Packers:	85.00 ft			
Tool Length:	113.00 ft			
Number of Packers:	2	Diameter: 6.75 inches		

Tool Comments:

Tool Description

Tool Description	Length (ft)	Serial No.	Position	Depth (ft)	Accum. Lengths
Shut In Tool	5.00			3977.00	
Hydraulic tool	5.00			3982.00	
Jars	5.00			3987.00	
Safety Joint	3.00			3990.00	
Packer	5.00			3995.00	28.00 Bottom Of Top Packer
Packer	5.00			4000.00	
Stubb	1.00			4001.00	
Recorder	0.00	8671	Inside	4001.00	
Recorder	0.00	8320	Outside	4001.00	
Perforations	15.00			4016.00	
Blank Spacing	64.00			4080.00	
Perforations	2.00			4082.00	
Bullnose	3.00			4085.00	85.00 Bottom Packers & Anchor

Total Tool Length: 113.00



**TRILOBITE
TESTING, INC**

DRILL STEM TEST REPORT

FLUID SUMMARY

Murfin Drilling Co., Inc
250 N. Water Suite 300
Wichita, KS 67202
ATTN: Robert Hendrix

22/4s/31w Rawlins KS
Holle Trust #1-22
Job Ticket: 53487 **DST#: 3**
Test Start: 2014.02.27 @ 07:43:00

Mud and Cushion Information

Mud Type: Gel Chem	Cushion Type:	Oil API:	deg API
Mud Weight: 9.00 lb/gal	Cushion Length: ft	Water Salinity:	55000 ppm
Viscosity: 57.00 sec/qt	Cushion Volume: bbl		
Water Loss: 5.19 in ³	Gas Cushion Type:		
Resistivity: ohm.m	Gas Cushion Pressure: psig		
Salinity: 1500.00 ppm			
Filter Cake: 2.00 inches			

Recovery Information

Recovery Table

Length ft	Description	Volume bbl
236.00	MCW 89%w, 11%m	1.161
219.00	WM 52%m, 48%w	2.790

Total Length: 455.00 ft Total Volume: 3.951 bbl
Num Fluid Samples: 0 Num Gas Bombs: 0 Serial #:
Laboratory Name: Laboratory Location:
Recovery Comments: RW = .162 ohms @ 63.1 deg F

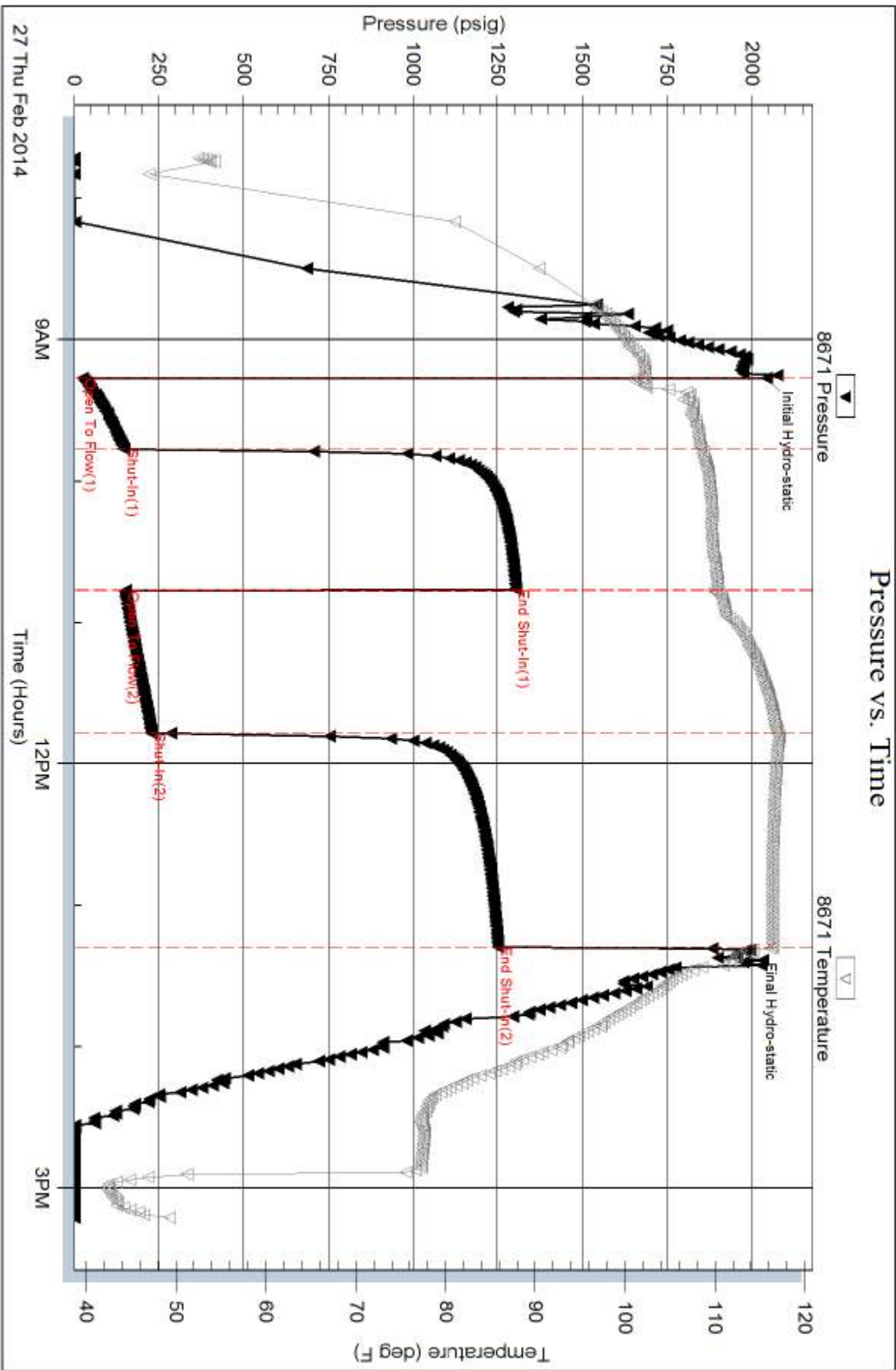
Serial #: 8671

Inside

Murfin Drilling Co., Inc

Holle Trust #1-22

DST Test Number: 3

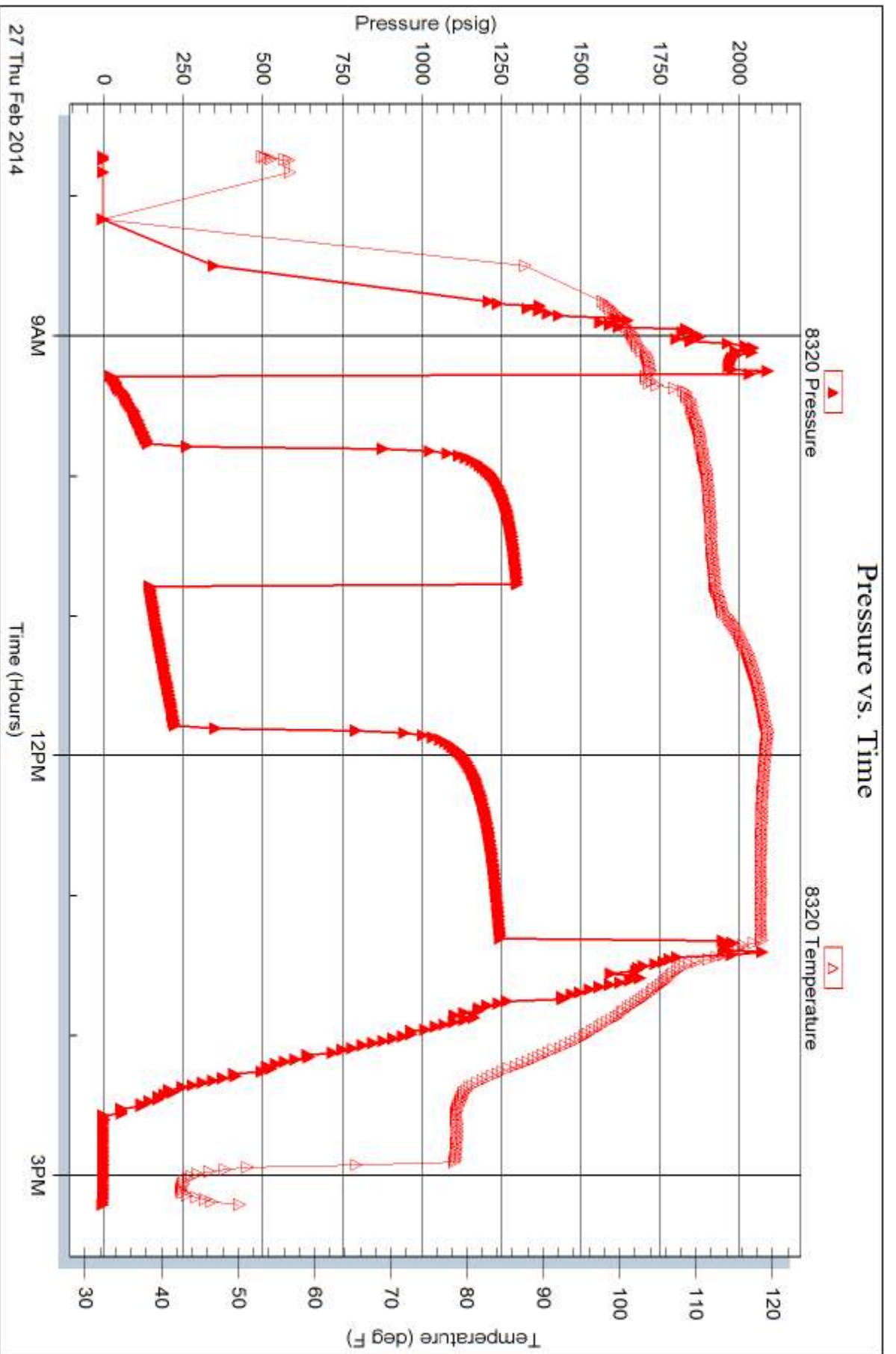


Serial #: 8320

Outside Murfin Drilling Co., Inc

Holle Trust #1-22

DST Test Number: 3



Triobite Testing, Inc

Ref. No: 53487

Printed: 2014.03.03 @ 15:32:29



TRILOBITE TESTING INC.

1515 Commerce Parkway • Hays, Kansas 67601

Test Ticket

NO. 53485

4/10

Well Name & No. Holle Trust #1-22 Test No. 1 Date 2-25-14
 Company Murfin Drilling Co., Inc Elevation 2871 KB 2860 GL
 Address 250 N Water Suite 300 Wichita, KS 67202
 Co. Rep / Geo. Robert Hendrix Rig Murfin #2
 Location: Sec. 22 Twp. 4 S Rge. 31w Co. Rawlins State KS

Interval Tested 3870 - 3952 Zone Tested Toronto - Lans. "B"
 Anchor Length 82 Drill Pipe Run 3596 Mud Wt. 9.1
 Top Packer Depth 3865 Drill Collars Run ~~2000~~ 267 Vis 58
 Bottom Packer Depth 3870 Wt. Pipe Run - WL 6.0
 Total Depth 3952 Chlorides 1300 ppm System LCM 8
 Blow Description IF: 1/2" Blow at open, built to 10" (Diesel in bucket)
ISI: No blowback
FF: Blow built to BOB (11") at 40 min.
FSI: No blowback

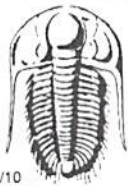
Rec	Feet of	%gas	%oil	%water	%mud
40	wm		44	56	
124	wcm		10	90	
59	mw		54	46	
177	mcw		84	16	

Rec Total 400 BHT 113 Gravity - API RW .234 @ 56.5° F Chlorides 39,000 ppm
 (A) Initial Hydrostatic 1915 Test ★ 1150 T-On Location 16:00 7/25
 (B) First Initial Flow 23 Jars ★ 250 T-Started 17:02
 (C) First Final Flow 117 Safety Joint ★ 75 T-Open 19:29
 (D) Initial Shut-In 1271 Circ Sub T-Pulled 23:30
 (E) Second Initial Flow 119 Hourly Standby T-Out 1:40 7/26
 (F) Second Final Flow 197 Mileage 48RT 74.40 Comments _____
 (G) Final Shut-In 1248 Sampler _____
 (H) Final Hydrostatic 1883 Straddle _____
 Initial Open 30 Shale Packer _____
 Initial Shut-In 60 Extra Packer _____
 Final Flow 60 Extra Recorder _____
 Final Shut-In 90 Day Standby _____
 Accessibility _____
 Sub Total 1549.40 MP/DST Disc't _____
 Ruined Shale Packer _____
 Ruined Packer _____
 Extra Copies _____
 Sub Total 0
 Total 1549.40

Approved By _____

Our Representative James Winder

Trilobite Testing Inc. shall not be liable for damaged of any kind of the property or personnel of the one for whom a test is made, or for any loss suffered or sustained, directly or indirectly, through the use of its equipment, or its statements or opinion concerning the results of any test, tools lost or damaged in the hole shall be paid for at cost by the party for whom the test is made.



TRILOBITE TESTING INC.

1515 Commerce Parkway • Hays, Kansas 67601

Test Ticket

NO. 53486

4/10

Well Name & No. Holle Trust #1-22 Test No. 2 Date 2-26-14
 Company Murfin Drilling Co. Inc. Elevation 2871 KB 2860 GL
 Address 250 N Water Suite 300 Wichita, KS 67202
 Co. Rep / Geo. Robert Hendrix Rig Murfin #2
 Location: Sec. 22 Twp. 4s Rge. 31w Co. Rawlins State KS

Interval Tested 3967 - 3993 Zone Tested Lans. "E-F"
 Anchor Length 26 Drill Pipe Run 3690 Mud Wt. 9.3
 Top Packer Depth 3962 Drill Collars Run 267 Vis 56
 Bottom Packer Depth 3967 Wt. Pipe Run - WL 5.2
 Total Depth 3993 Chlorides 1500 ppm System LCM 7

Blow Description IF: Blow built to 1/4" died back, dead at 20min.
ISI: No blowback
FF: No blow
FSI: No blowback

Rec	Feet of	%gas	%oil	%water	%mud
<u>2</u>	<u>mud w/oil spots</u>	<u>-</u>	<u>3</u>	<u>-</u>	<u>97</u>
Rec	Feet of	%gas	%oil	%water	%mud
Rec	Feet of	%gas	%oil	%water	%mud
Rec	Feet of	%gas	%oil	%water	%mud
Rec	Feet of	%gas	%oil	%water	%mud

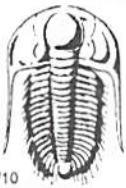
Rec Total 2 BHT 109 Gravity - API RW - @ - ° F Chlorides - ppm

(A) Initial Hydrostatic 2013 Test * 1150 T-On Location 11:45
 (B) First Initial Flow 19 Jars * 250 T-Started 12:30
 (C) First Final Flow 20 Safety Joint * 75 T-Open 14:07
 (D) Initial Shut-In 39 Circ Sub T-Pulled 17:08
 (E) Second Initial Flow 20 Hourly Standby T-Out 18:50
 (F) Second Final Flow 20 Mileage 48RT 74.40 Comments _____
 (G) Final Shut-In 30 Sampler _____
 (H) Final Hydrostatic 2008 Straddle _____

Ruined Shale Packer
 Ruined Packer
 Extra Copies
 Initial Open 30 Extra Packer
 Initial Shut-In 60 Extra Recorder
 Final Flow 30 Day Standby
 Final Shut-In 60 Accessibility
 Sub Total 1549.40 MP/DST Disc't _____

Approved By Rh D. Shif Our Representative James Winder

Trilobite Testing Inc. shall not be liable for damaged of any kind of the property or personnel of the one for whom a test is made, or for any loss suffered or sustained, directly or indirectly, through the use of its equipment, or its statements or opinion concerning the results of any test, tools lost or damaged in the hole shall be paid for at cost by the party for whom the test is made.



TRILOBITE TESTING INC.

1515 Commerce Parkway • Hays, Kansas 67601

Test Ticket

NO. 53487

Well Name & No. Halle Trust #1-22 Test No. 3 Date 2-27-14
 Company Murfin Drilling Co., Inc Elevation 2871 KB 2860 GL
 Address 250 N. Water Suite 300 Wichita, KS 67202
 Co. Rep / Geo. Robert Hendrix Rig Murfin #2
 Location: Sec. 22 Twp. 4s Rge. 3lw Co. Rawlins State KS

Interval Tested 4000 - 4085 Zone Tested Lans "E-J"
 Anchor Length 85 Drill Pipe Run 3721 Mud Wt. 9.2
 Top Packer Depth 3995 Drill Collars Run 267 Vis 57
 Bottom Packer Depth 4000 Wt. Pipe Run - WL 5.2
 Total Depth 4085 Chlorides 1500 ppm System LCM 8.0

Blow Description IF: Blow built to BOB (11") at 28 min.
ISI: No blowback
FF: Blow built to BOB at 32 min.
FSI: No blowback

Rec	Feet of	%gas	%oil	%water	%mud
<u>219</u>	<u>WM</u>	-	-	<u>48</u>	<u>52</u>
<u>236</u>	<u>mcw</u>	-	-	<u>89</u>	<u>11</u>
Rec	Feet of	%gas	%oil	%water	%mud
Rec	Feet of	%gas	%oil	%water	%mud
Rec	Feet of	%gas	%oil	%water	%mud

Rec Total 455 BHT 116 Gravity - API RW .162 @ 61.3 °F Chlorides 55,000 ppm

(A) Initial Hydrostatic 2043 Test * 1250 T-On Location 7:20
 (B) First Initial Flow 25 Jars * 250 T-Started 7:43
 (C) First Final Flow 148 Safety Joint * 75 T-Open 9:16
 (D) Initial Shut-In 1305 Circ Sub T-Pulled 13:17
 (E) Second Initial Flow 150 Hourly Standby T-Out 15:05
 (F) Second Final Flow 228 Mileage 48 RTx2 148.80 Comments Tools loaded 22:30
 (G) Final Shut-In 1252 Sampler 2/28
 (H) Final Hydrostatic 1995 Straddle Ruined Shale Packer

Initial Open 30 Ruined Packer * 320 Extra Copies
 Initial Shut-In 60 Shale Packer Sub Total 0
 Final Flow 60 Extra Packer Total 2043.80
 Final Shut-In 90 Extra Recorder MP/DST Disc't
 Day Standby * 1d 7.5h
 Accessibility
 Sub Total 1723.80

Approved By [Signature] Our Representative James Winder

Trilobite Testing Inc. shall not be liable for damaged of any kind of the property or personnel of the one for whom a test is made, or for any loss suffered or sustained, directly or indirectly, through the use of its equipment, or its statements or opinion concerning the results of any test, tools lost or damaged in the hole shall be paid for at cost by the party for whom the test is made.