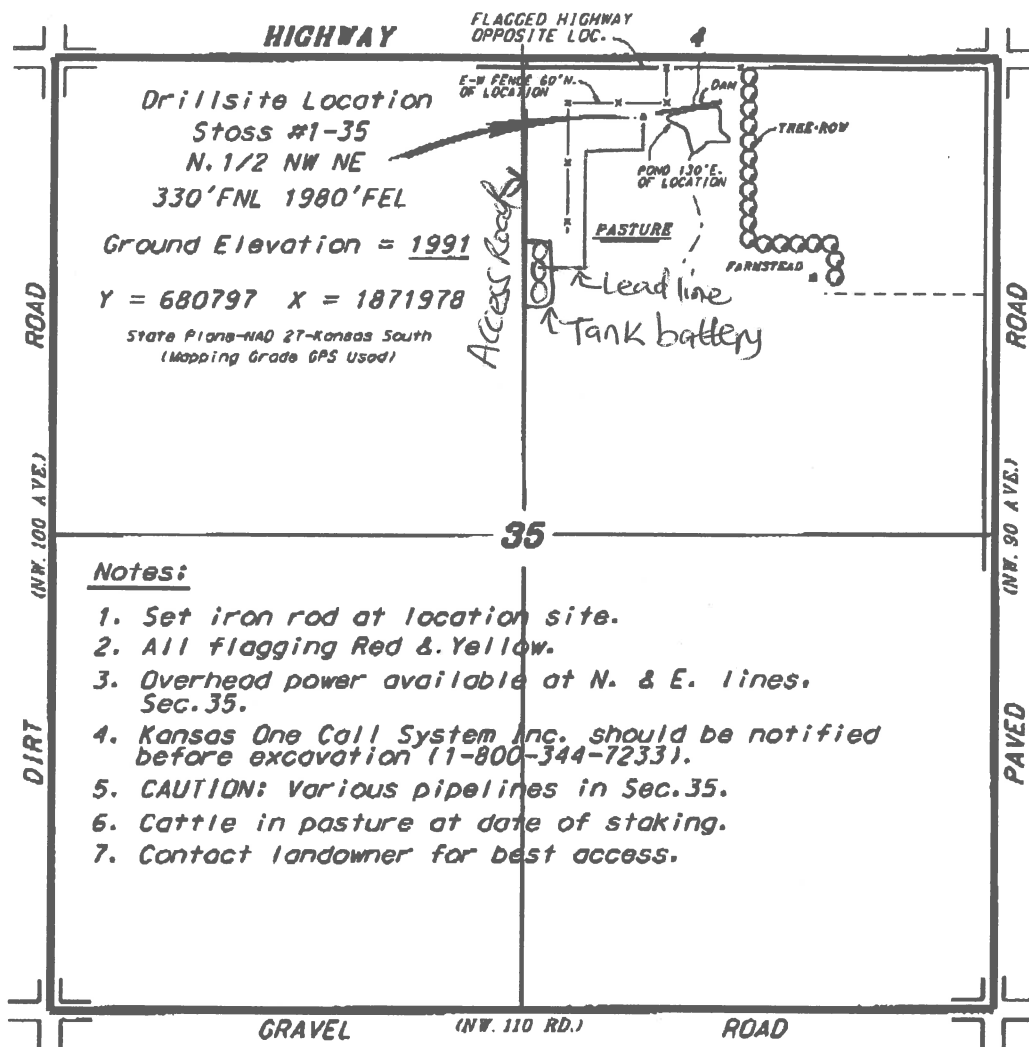


04/18/2014 11:04 FAX 6207922873

CENTRAL KS SURVEYING

003

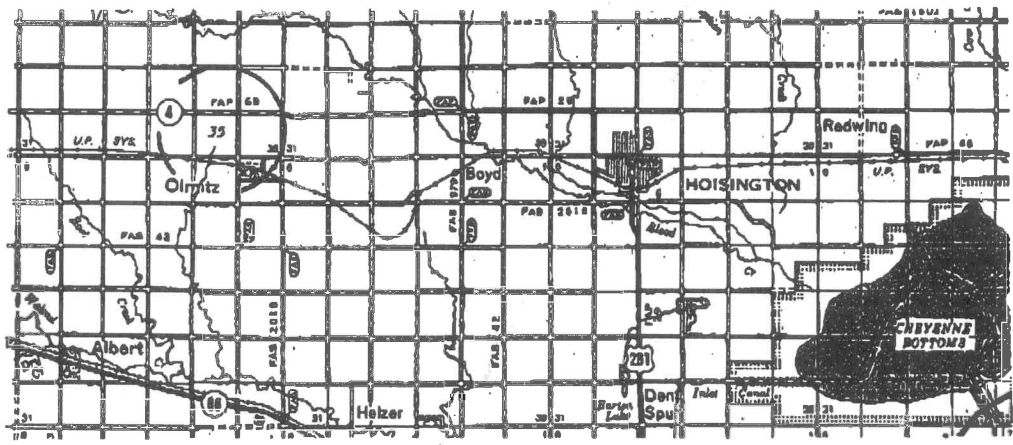
F.G. HOLL COMPANY, LLC
STOSS LEASE
NE. 1/4, SECTION 35, T17S, R15W
BARTON COUNTY, KANSAS



Egress and access to location as shown on this plat is for usage only and may not be legally opened for public use. Contact landowner, tenant and county road department for access.

ROAD (NW. 100 AVE.)
 DIRT
 GRAVEL (NW. 110 RD.)
 ROAD

ROAD (NW. 90 AVE.)
 PAVED



* Controlling data is based upon the best maps and photographs available to us and upon a regular section of land containing 640 acres.
 * Appropriate section lines were determined using the normal standards of care of oilfield surveyors practicing in the state of Kansas. The section corners, which establish the precise section lines, were not physically located, and the exact location of the drillsite location in the section is not guaranteed. Therefore, the operator securing this service and accepting this plat and all other parties relying thereon agree to hold Central Kansas Oilfield Services, Inc., its officers and employees harmless from all losses, costs and expenses and hold entities released from any liability from incidental or consequential damages.
 * Elevations derived from National Geodetic Vertical Datum.

0096 April 15, 2014