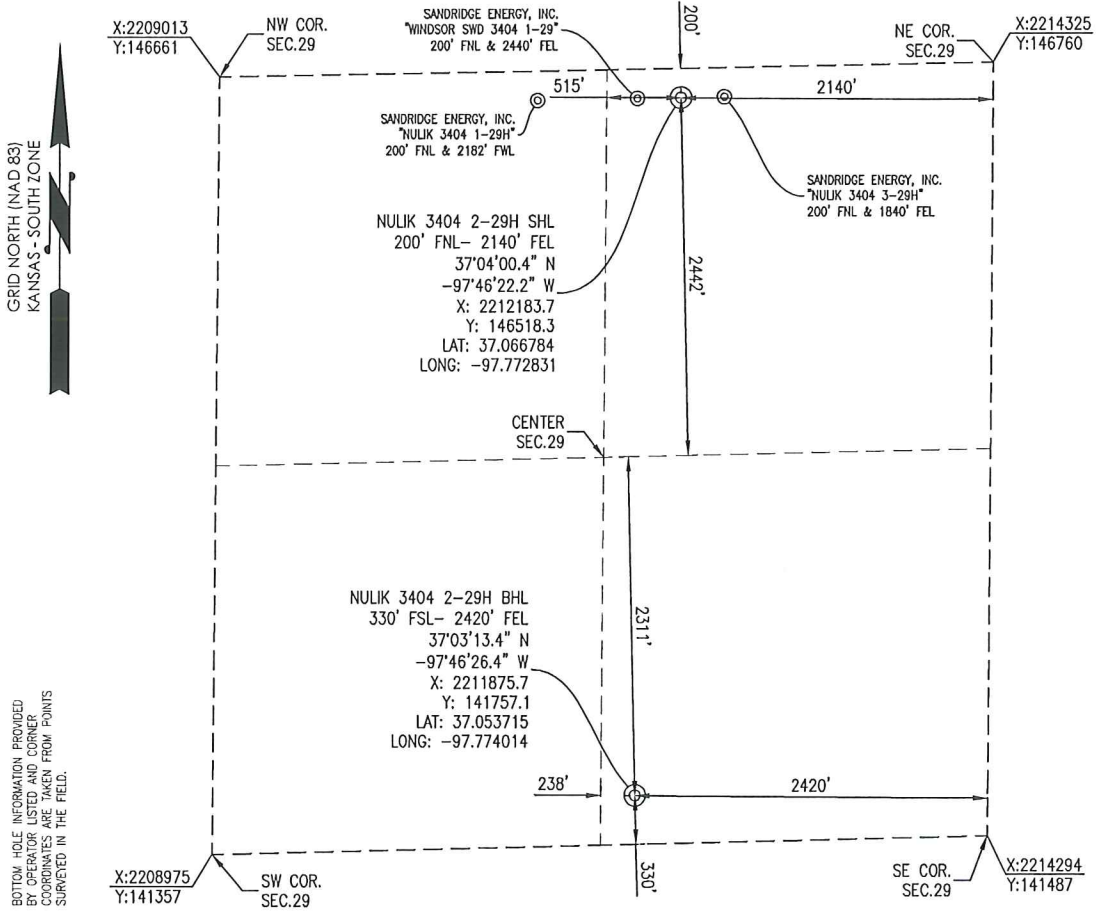


SUMNER COUNTY, KANSAS  
 200' FNL- 2140' FEL SECTION 29 TOWNSHIP 34S RANGE 04W 6TH P.M.



GRID NORTH (NAD 83)  
 KANSAS - SOUTH ZONE

BOTTOM HOLE INFORMATION PROVIDED  
 BY OPERATOR LISTED AND CORNER  
 COORDINATES ARE TAKEN FROM POINTS  
 SURVEYED IN THE FIELD.

OPERATOR: SANDRIDGE ENERGY, INC.  
 LEASE NAME: NULIK 3404

WELL NO: 2-29H

ELEVATION:  
 1228' GR. AT STAKE

TOPOGRAPHIC & VEGETATION: LOCATION FELL IN A FIELD

GOOD DRILL SITE: YES REFERENCE STAKES OR ALTERNATE LOCATION STAKES SET: NONE

BEST ACCESSIBILITY TO LOCATION: NORTH LINE

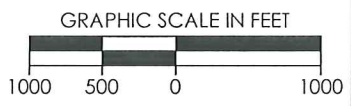
DISTANCE & DIRECTION  
 FROM HWY JCT OR TOWN: FROM THE JCT. OF KS-44 & S ARGONIA RD, TRAVEL SOUTH ON  
 S ARGONIA RD FOR ±6.0 MILES, TURN RIGHT (WEST) ON W 150TH ST S AND TRAVEL ±0.5  
 MILES TO THE NORTH 1/4 CORNER OF SECTION 29, T34S-R04W.

(THE FOLLOWING INFORMATION WAS GATHERED USING A GPS RECEIVER ACCURACY ±2-3 METERS)

GPS DATUM: NAD-27	STATE PLANE COORDINATES:
LAT: 37.066784	ZONE: KS-SOUTH NAD-27
LONG: -97.772831	X: 2212183.7
	Y: 146518.3

DATE STAKED: 4-15-2014

GENERAL NOTES:  
 THE TIES AND FOOTAGES SHOWN ON THIS PLAT ARE FROM LINES OF OCCUPATION FROM A SURVEY MADE ON THE GROUND AND / OR BEARING AND DISTANCES FROM THE GENERAL LAND OFFICE PLAT OF THE AREA SHOWN AND MAY NOT BE THE ACTUAL PROPERTY CORNERS. THIS PLAT DOES NOT REPRESENT A TRUE BOUNDARY SURVEY. DRILL SITE CONDITION DETERMINATIONS WERE MADE BY SANDRIDGE ENERGY INC. REPRESENTATIVES.



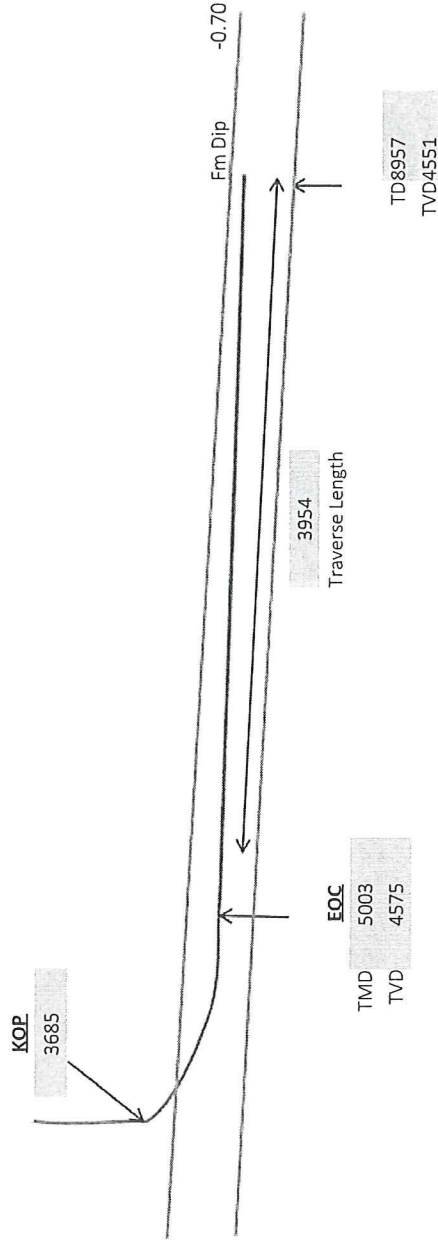
REVISION		<b>SandRidge</b>	
▲	MOVED SHL (4-15-2014)	"NULIK 3404 2-29H" PART OF THE NE 1/4 OF SECTION 29, T-34-S, R-04-W PROPOSED DRILL SITE SUMNER COUNTY, KANSAS	
		SCALE: 1" = 1000'	
		PLOT DATE: 04-15-2014	DRAWN BY: MF SHEET NO.: 1 OF 4

Target Line	
TVD @ 0' VS	4,580
INC	90.35

	SHL	BHL
X NAD 27	2,212,184	2,211,876
Y NAD 27	146,518	141,757

Total VS	4,770.95
EOC (MD)	5,003.18
EOC (TVD)	4,575.01
KOP	3,685.40
Azimuth	183.70
Traverse Length	3,953.64
TD (MD)	8,956.83
TVD @ TD	4,550.86
TVD displacement f/ EOC to TD	24.15

North to South (~180 Azimuth)



**Operator**

SandRidge Energy

**Well Name and Number**

Nulik 3404 2-29H

**Well Surface Location**

29-T34S-R4W; 200' FNL & 2140' FEL

**Well Bottom Hole Location**

29-T34S-R4W; 330' FSL & 2420' FEL

**County and State**

Sumner County, Kansas

**Nulik 3404 2-29H**  
**Lease Information Sheet**

**Unit Description:**

All of Section 29-34S-04W  
Sumner County

**Surface Owner:**

Dean and Janice Bruey, HW/JT  
1546 S Blackstone Rd  
Caldwell, KS 67022

Nulik 3404 2-29H, Nulik 3404 3-29H, Windsor SWD 3404

