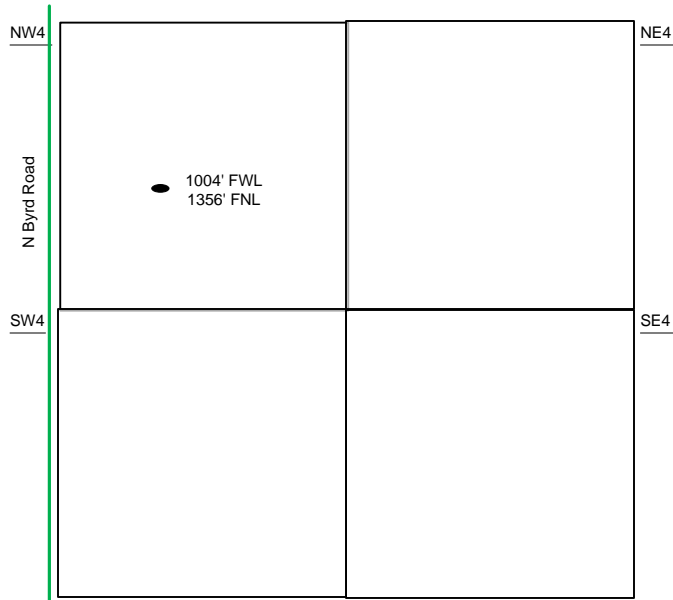
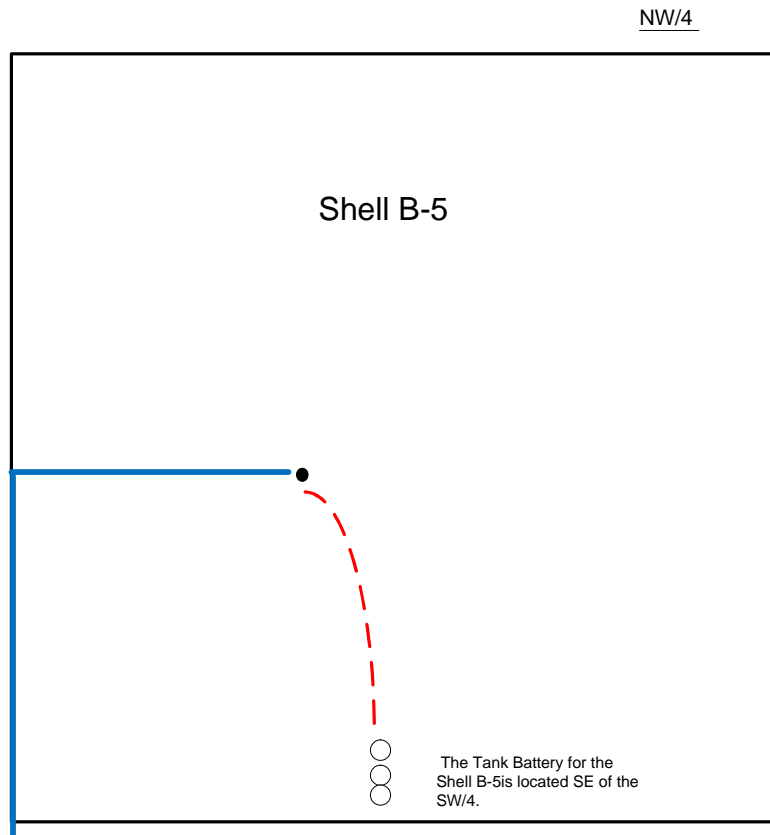


Proposed Plan of Construction
 Shell B-5
 Sec 17 T22S-R34W
 Finney County, KS



Sec 17 – T22S – R34W



Proposed Details of
 SW/4 Sec 17 – T22S – R34W

Note-Drawing **Not** to Scale

Proposed Site Diagram
 Shell B-5
 April 28th, 2014

