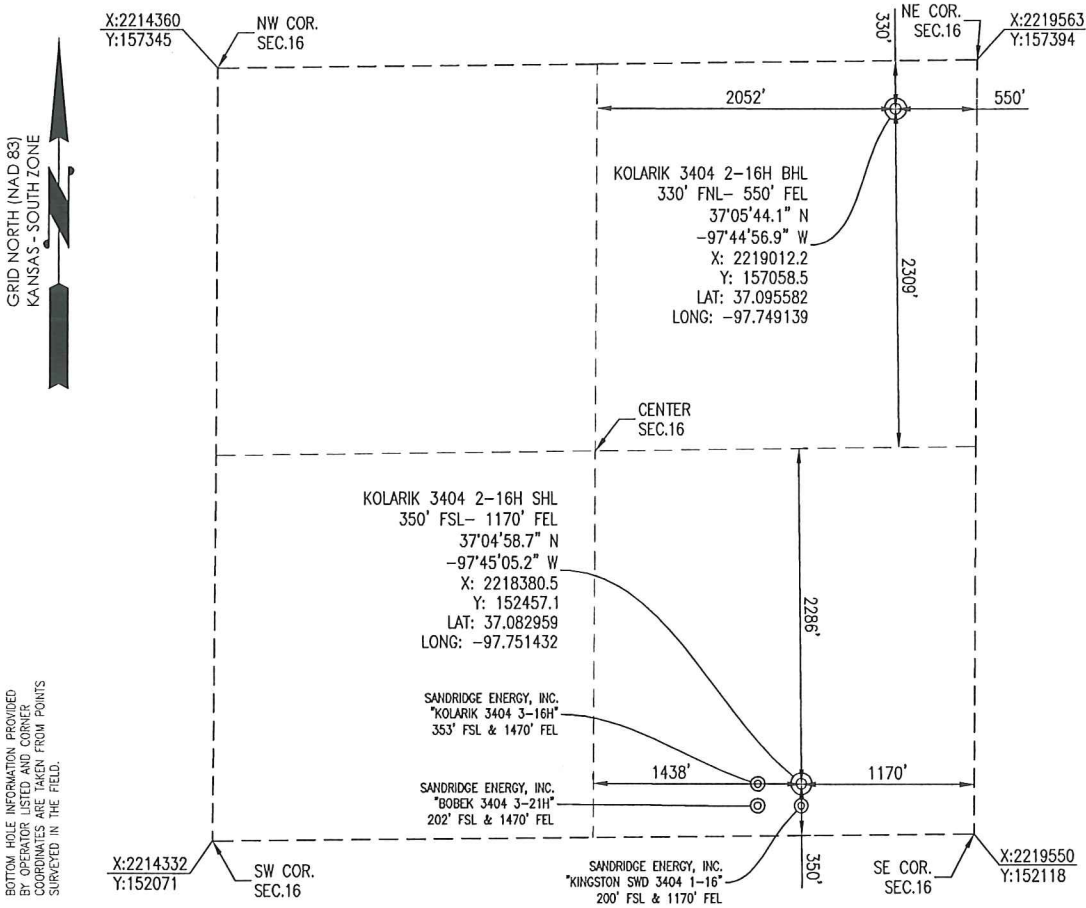




SUMNER COUNTY, KANSAS
 350' FSL- 1170' FEL SECTION 16 TOWNSHIP 34S RANGE 04W 6TH P.M.



BOTTOM HOLE INFORMATION PROVIDED BY OPERATOR LISTED AND CORNER COORDINATES ARE TAKEN FROM POINTS SURVEYED IN THE FIELD.

OPERATOR: SANDRIDGE ENERGY, INC.

WELL NO: 2-16H

ELEVATION:
 1230' GR. AT STAKE

LEASE NAME: KOLARIK 3404

TOPOGRAPHIC & VEGETATION: LOCATION FELL IN A FIELD

GOOD DRILL SITE: YES REFERENCE STAKES OR ALTERNATE LOCATION STAKES SET: NONE

BEST ACCESSIBILITY TO LOCATION: SOUTH OR EAST LINE

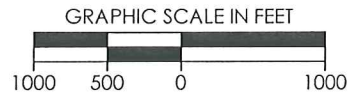
DISTANCE & DIRECTION
 FROM HWY JCT OR TOWN: FROM THE JCT. OF KS-44 & S ARGONIA RD, TRAVEL SOUTH ON S ARGONIA RD FOR ±5.0 MILES, TURN LEFT (EAST) ON W 140TH ST S AND TRAVEL ±1.0 MILES TO THE SE CORNER OF SECTION 16, T34S-R04W.

(THE FOLLOWING INFORMATION WAS GATHERED USING A GPS RECEIVER ACCURACY ±2-3 METERS)
 GPS DATUM: NAD-27
 LAT: 37.082959
 LONG: -97.751432
 STATE PLANE COORDINATES:
 ZONE: KS-SOUTH NAD-27
 X: 2218380.5
 Y: 152457.1

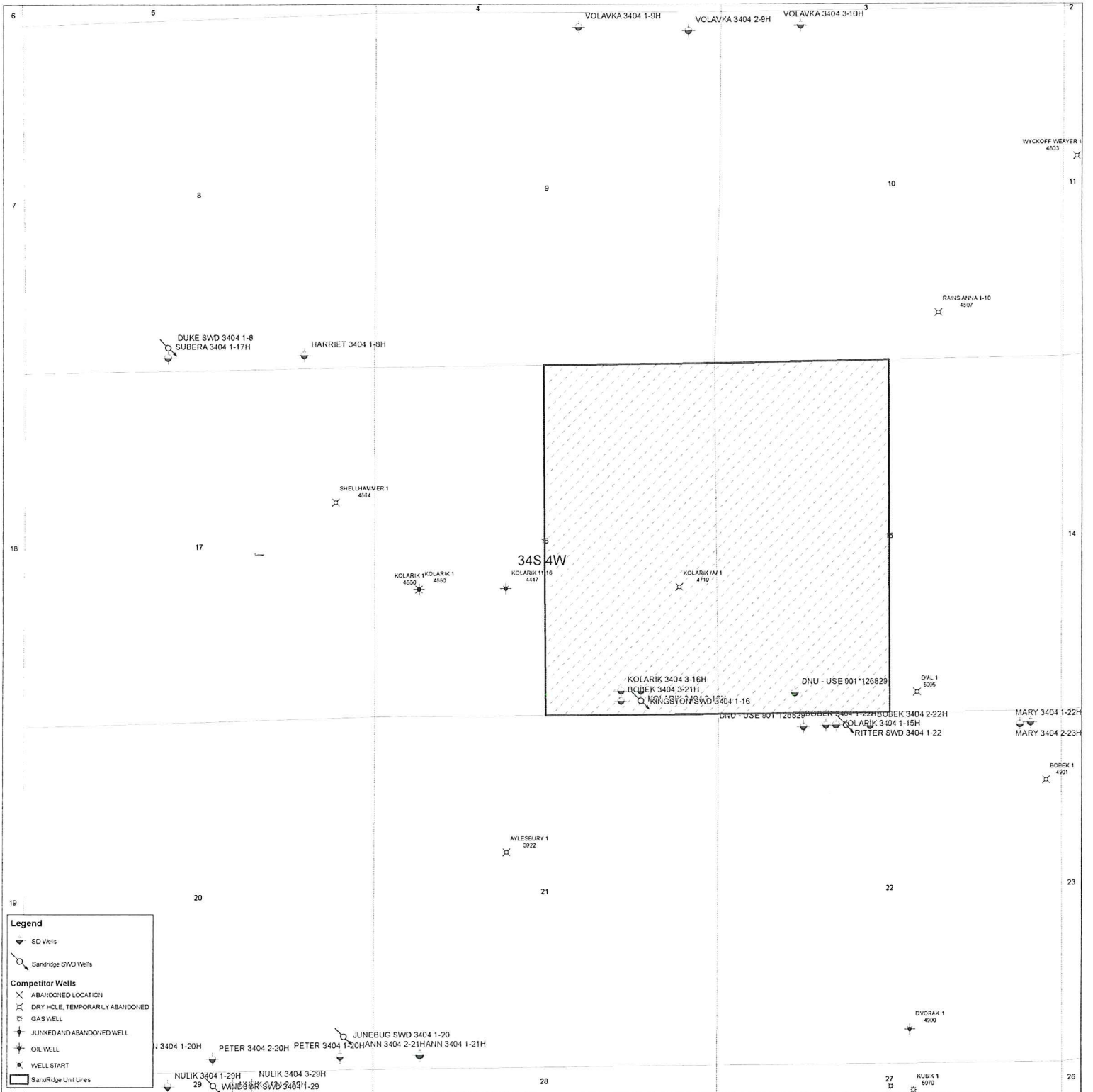
DATE STAKED: 3-27-2014

GENERAL NOTES:

THE TIES AND FOOTAGES SHOWN ON THIS PLAT ARE FROM LINES OF OCCUPATION FROM A SURVEY MADE ON THE GROUND AND / OR BEARING AND DISTANCES FROM THE GENERAL LAND OFFICE PLAT OF THE AREA SHOWN AND MAY NOT BE THE ACTUAL PROPERTY CORNERS. THIS PLAT DOES NOT REPRESENT A TRUE BOUNDARY SURVEY. DRILL SITE CONDITION DETERMINATIONS WERE MADE BY SANDRIDGE ENERGY INC. REPRESENTATIVES.



REVISION	SandRidge		
	"KOLARIK 3404 2-16H" PART OF THE SE 1/4 OF SECTION 16, T-34-S, R-04-W PROPOSED DRILL SITE SUMNER COUNTY, KANSAS		
	SCALE: 1" = 1000'	PLOT DATE: 03-28-2014	DRAWN BY: MF SHEET NO.: 1 OF 4



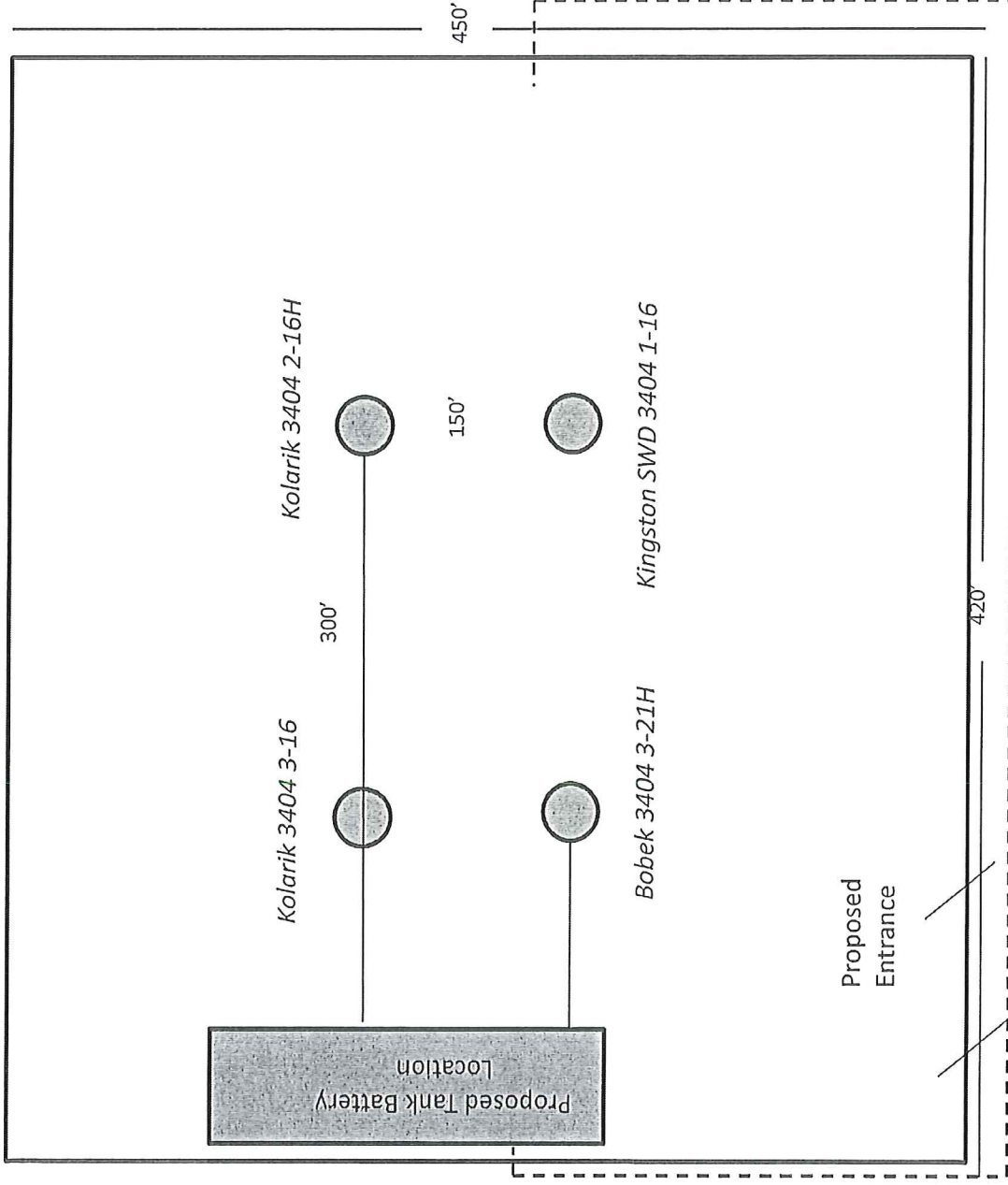
Kolarik 3404 2-16H
Lease Information Sheet

Unit Description:

W2 of Section 15, T34S-R04W and
E2 of Section 16, T34S-R04W
Sumner County

Surface Owner:

SandRidge Exploration and Production LLC
123 Robert S Kerr Avenue
Oklahoma City, OK 73102



Proposed Electric Line