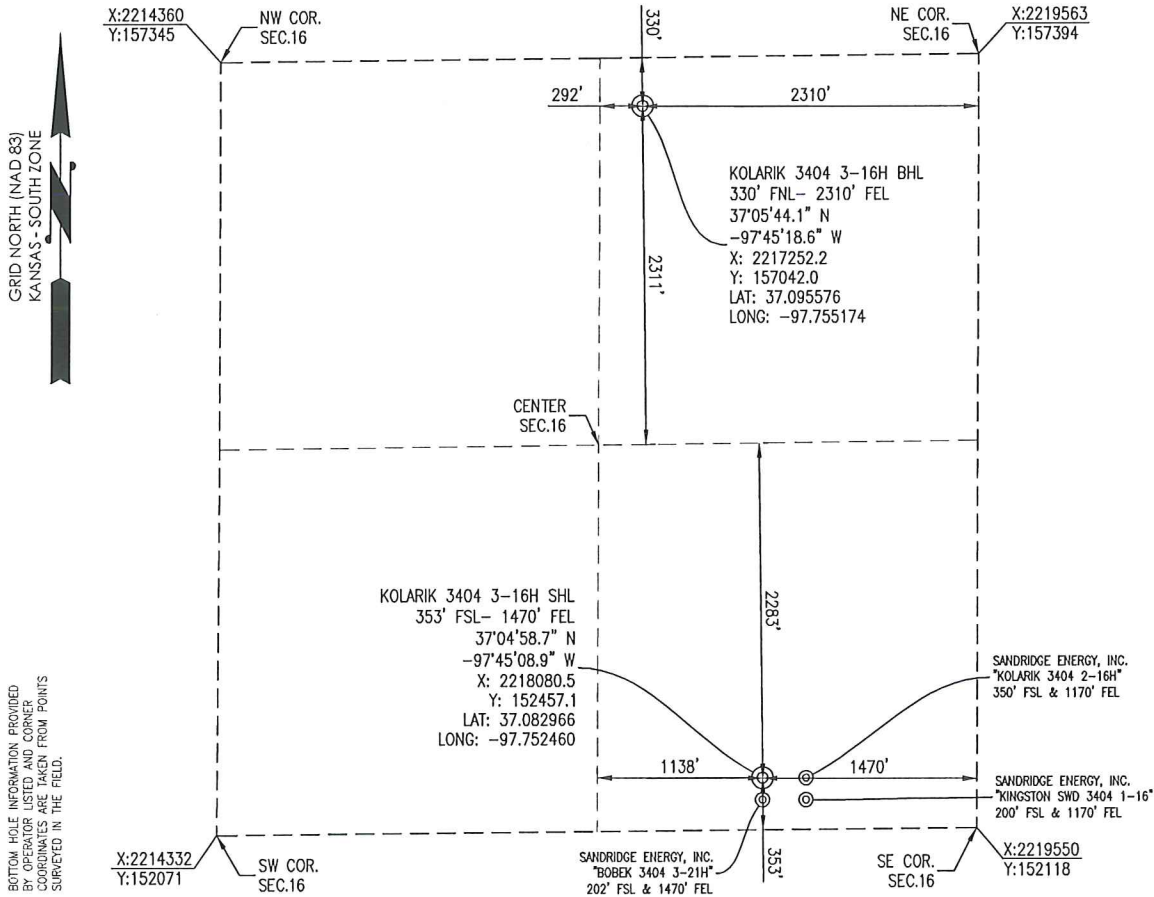




Crafton Tull
 SURVEYING

SUMNER COUNTY, KANSAS
 353' FSL- 1470' FEL SECTION 16 TOWNSHIP 34S RANGE 04W 6TH P.M.



BOTTOM HOLE INFORMATION PROVIDED
 CENTER CORNER COORDINATES
 COORDINATES ARE TAKEN FROM POINTS
 SURVEYED IN THE FIELD.

OPERATOR: SANDRIDGE ENERGY, INC. WELL NO: 3-16H

ELEVATION:
 1227' GR. AT STAKE

LEASE NAME: KOLARIK 3404

TOPOGRAPHIC & VEGETATION: LOCATION FELL IN A FIELD

GOOD DRILL SITE: YES REFERENCE STAKES OR ALTERNATE LOCATION STAKES SET: NONE

BEST ACCESSIBILITY TO LOCATION: SOUTH OR EAST LINE

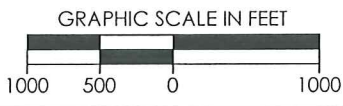
DISTANCE & DIRECTION
 FROM HWY JCT OR TOWN: FROM THE JCT. OF KS-44 & S ARGONIA RD, TRAVEL SOUTH ON S ARGONIA RD FOR ±5.0 MILES, TURN LEFT (EAST) ON W 140TH ST S AND TRAVEL ±1.0 MILES TO THE SE CORNER OF SECTION 16, T34S-R04W.

(THE FOLLOWING INFORMATION WAS GATHERED USING A GPS RECEIVER ACCURACY ±2-3 METERS)

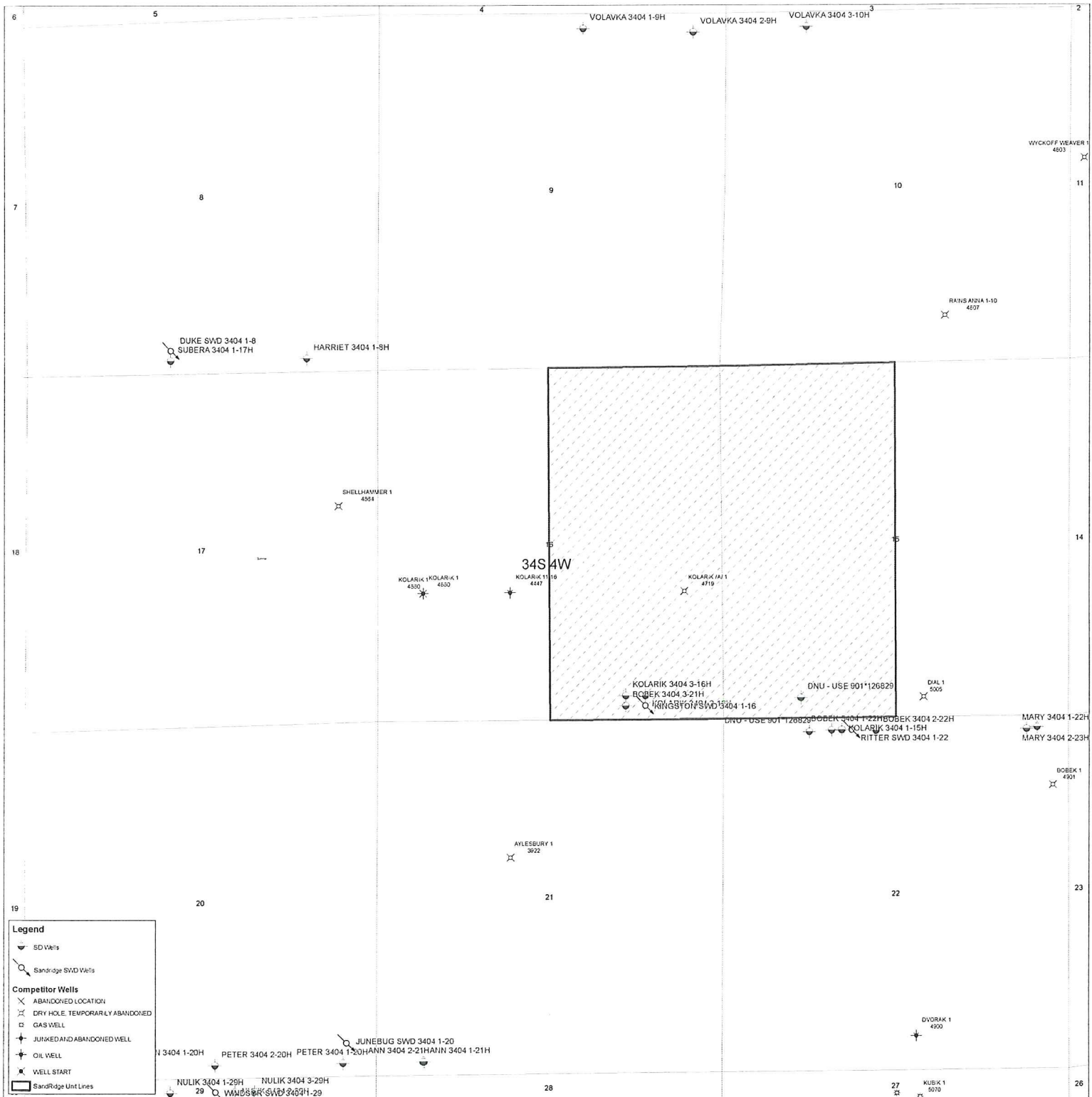
GPS DATUM: NAD-27	STATE PLANE COORDINATES: ZONE: KS-SOUTH NAD-27
LAT: 37.082966	X: 2218080.5
LONG: -97.752460	Y: 152457.1

DATE STAKED: 3-27-2014

GENERAL NOTES:
 THE TIES AND FOOTAGES SHOWN ON THIS PLAT ARE FROM LINES OF OCCUPATION FROM A SURVEY MADE ON THE GROUND AND / OR BEARING AND DISTANCES FROM THE GENERAL LAND OFFICE PLAT OF THE AREA SHOWN AND MAY NOT BE THE ACTUAL PROPERTY CORNERS. THIS PLAT DOES NOT REPRESENT A TRUE BOUNDARY SURVEY. DRILL SITE CONDITION DETERMINATIONS WERE MADE BY SANDRIDGE ENERGY INC. REPRESENTATIVES.



REVISION	SandRidge
	"KOLARIK 3404 3-16H" PART OF THE SE1/4 OF SECTION 16, T-34-S, R-04-W PROPOSED DRILL SITE SUMNER COUNTY, KANSAS
SCALE: 1" = 1000'	DRAWN BY: MF SHEET NO.: 1 OF 4
PLOT DATE: 03-28-2014	



Legend

- SD Wells
- Sandridge SVD Wells
- Competitor Wells**
- ABANDONED LOCATION
- DRY HOLE, TEMPORARILY ABANDONED
- GAS WELL
- JUNKED AND ABANDONED WELL
- OIL WELL
- WELL START
- Sandridge Unit Lines

Copyright © 2010 Schlumberger. All rights reserved. This document is the property of Schlumberger and is not to be distributed, copied, or reproduced in any form without the prior written permission of Schlumberger.

Kolarik 3404 3-16H
Lease Information Sheet

Unit Description:

W2 of Section 15, T34S-R04W and
E2 of Section 16, T34S-R04W
Sumner County

Surface Owner:

SandRidge Exploration and Production LLC
123 Robert S Kerr Avenue
Oklahoma City, OK 73102

