

TRILOBITE TESTING, INC.

DRILL STEM TEST REPORT

Woolsey Oper. Co. LLC.
 125 N. Market Ste. 1000
 Wichita, KS 67202-1729
 ATTN: Bill Klaver

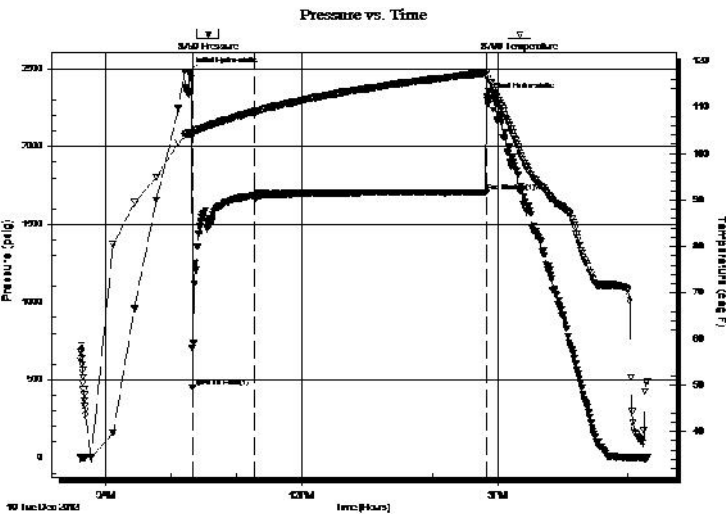
7-35s.-12w. Barber Co.
Rogg #1
 Job Ticket: 51859 **DST#: 2**
 Test Start: 2013.12.10 @ 08:36:35

GENERAL INFORMATION:

Formation: **Mississippi**
 Deviated: No Whipstock: 0.00 ft (KB)
 Time Tool Opened: 10:19:50
 Time Test Ended: 17:17:20
 Interval: **4832.00 ft (KB) To 4880.00 ft (KB) (TVD)**
 Total Depth: 4880.00 ft (KB) (TVD)
 Hole Diameter: 7.88 inches Hole Condition: Fair
 Test Type: Conventional Bottom Hole (Reset)
 Tester: Ryan Reynolds
 Unit No: 48
 Reference Elevations: 1466.00 ft (KB)
 1454.00 ft (CF)
 KB to GR/CF: 12.00 ft

Serial #: 8790 Inside
 Press@RunDepth: 1684.29 psig @ 4833.00 ft (KB) Capacity: 8000.00 psig
 Start Date: 2013.12.10 End Date: 2013.12.10 Last Calib.: 2013.12.10
 Start Time: 08:36:40 End Time: 17:17:20 Time On Btm: 2013.12.10 @ 10:17:05
 Time Off Btm: 2013.12.10 @ 14:50:05

TEST COMMENT: IF: Strong blow . BOB @ 30sec. No GTS.
 IS: Weak 1/4" bb
 FF: Weak blow . 1/4 - 1"
 FS: No blow



PRESSURE SUMMARY

Time (Min.)	Pressure (psig)	Temp (deg F)	Annotation
0	2478.21	104.43	Initial Hydro-static
3	448.96	104.39	Open To Flow (1)
60	1684.29	109.06	Shut-In(1)
273	1708.07	117.42	End Shut-In(1)
273	2319.70	117.68	Final Hydro-static

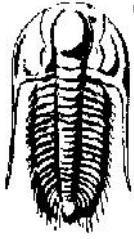
Recovery

Length (ft)	Description	Volume (bbl)
15.00	OCM 2%oil, 98%mud	0.07
0.00	60' GIP (Hvy spkd MO in hyd. tool)	0.00

Gas Rates

	Choke (inches)	Pressure (psig)	Gas Rate (Mcf/d)

* Recovery from multiple tests



**TRILOBITE
TESTING, INC.**

DRILL STEM TEST REPORT

FLUID SUMMARY

Woolsey Oper. Co. LLC.

7-35s.-12w. Barber Co.

125 N. Market Ste. 1000
Wichita, KS 67202-1729

Rogg #1

Job Ticket: 51859

DST#: 2

ATTN: Bill Klaver

Test Start: 2013.12.10 @ 08:36:35

Mud and Cushion Information

Mud Type: Gel Chem

Cushion Type:

Oil API:

deg API

Mud Weight: 9.00 lb/gal

Cushion Length:

ft

Water Salinity:

4000 ppm

Viscosity: 48.00 sec/qt

Cushion Volume:

bbbl

Water Loss: 7.97 in³

Gas Cushion Type:

Resistivity: ohm.m

Gas Cushion Pressure:

psig

Salinity: 4000.00 ppm

Filter Cake: 0.02 inches

Recovery Information

Recovery Table

Length ft	Description	Volume bbbl
15.00	OCM 2%oil, 98%mud	0.074
0.00	60' GIP (Hvy spkd MO in hyd. tool)	0.000

Total Length: 15.00ft Total Volume: 0.074 bbl

Num Fluid Samples: 0

Num Gas Bombs: 0

Serial #: none

Laboratory Name:

Laboratory Location:

Recovery Comments: Tool plugged during initial flow

Serial #: 8790

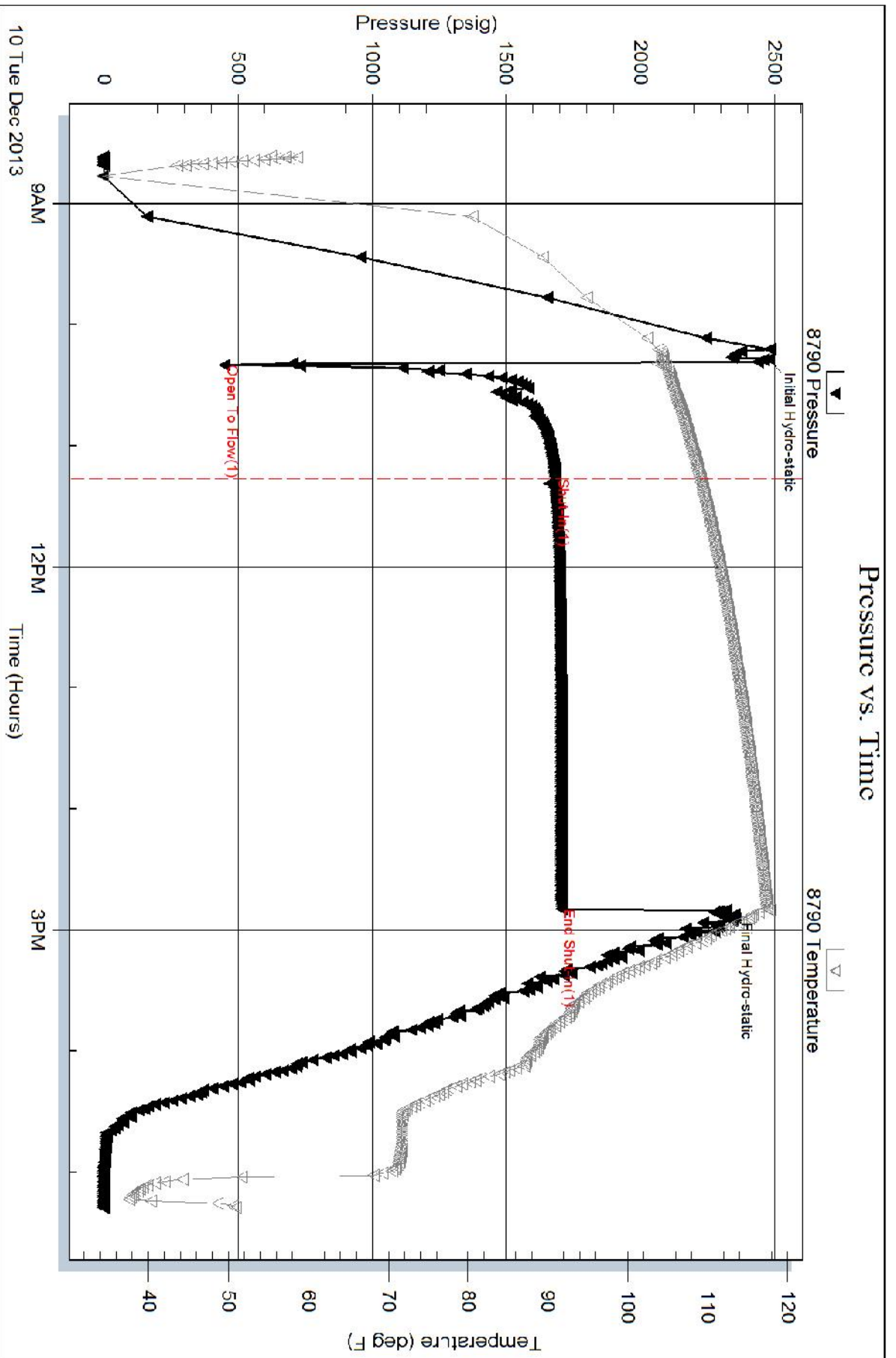
Inside

Woolsey Oper. Co. LLC.

Rogg #1

DST Test Number: 2

Pressure vs. Time



Serial #: 8792

Outside Woolsey Oper. Co. LLC

Rogg #1

DST Test Number: 2

