



DRILL STEM TEST REPORT

Prepared For: **K3 Oil & Gas Operating Co.**

211 Highland Cross Suite 230
Houston, TX 77073

ATTN: Pat Deenihan

36-15s-29w Gove,KS

M. Coberly Partners #36-10

Start Date: 2014.04.08 @ 17:27:00

End Date: 2014.04.08 @ 23:16:54

Job Ticket #: 56264 DST #: 1

Trilobite Testing, Inc

PO Box 362 Hays, KS 67601

ph: 785-625-4778 fax: 785-625-5620

Printed: 2014.04.14 @ 16:33:17



TRILOBITE TESTING, INC

DRILL STEM TEST REPORT

K3 Oil & Gas Operating Co.

M. Coberly Partners #36-10

211 Highland Cross Suite 230
Houston, TX 77073

36-15s-29w Gove,KS

Job Ticket: 56264

DST#: 1

ATTN: Pat Deenihan

Test Start: 2014.04.08 @ 17:27:00

GENERAL INFORMATION:

Formation: **LKC 'D - E'**

Deviated: No Whipstock: ft (KB)

Time Tool Opened: 20:08:48

Time Test Ended: 23:16:54

Test Type: Conventional Bottom Hole (Initial)

Tester: Chuck Smith

Unit No: 62

Interval: 3785.00 ft (KB) To 3821.00 ft (KB) (TVD)

Reference Elevations: 2602.00 ft (KB)

Total Depth: 3821.00 ft (KB) (TVD)

2594.00 ft (CF)

Hole Diameter: 7.88 inches Hole Condition: Good

KB to GR/CF: 8.00 ft

Serial #: 8357

Inside

Press@RunDepth: 20.07 psig @ 3789.00 ft (KB)

Capacity: 8000.00 psig

Start Date: 2014.04.08

End Date:

2014.04.08

Last Calib.: 2014.04.08

Start Time: 17:27:05

End Time:

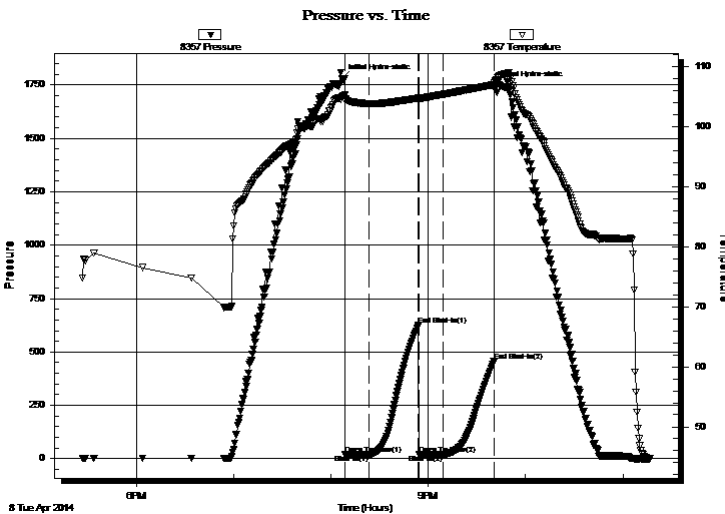
23:16:54

Time On Btm: 2014.04.08 @ 20:06:48

Time Off Btm: 2014.04.08 @ 21:40:54

TEST COMMENT: 15- 1/2" Blow receded to a weak surface blow .
30- No return.
15- No blow .
30- No return.

PRESSURE SUMMARY



Time (Min.)	Pressure (psig)	Temp (deg F)	Annotation
0	1781.47	105.00	Initial Hydro-static
2	19.81	104.43	Open To Flow (1)
17	19.75	103.86	Shut-In(1)
48	624.79	104.78	End Shut-In(1)
48	19.91	104.60	Open To Flow (2)
63	20.07	105.39	Shut-In(2)
94	458.08	107.02	End Shut-In(2)
95	1748.94	107.42	Final Hydro-static

Recovery

Length (ft)	Description	Volume (bbl)
0.00	RW: @ Degrees F = PPM	0.00
2.00	M 100m with couple oil specs	0.03

Gas Rates

	Choke (inches)	Pressure (psig)	Gas Rate (Mcf/d)



TRILOBITE TESTING, INC

DRILL STEM TEST REPORT

K3 Oil & Gas Operating Co.

M. Coberly Partners #36-10

211 Highland Cross Suite 230
Houston, TX 77073

36-15s-29w Gove,KS

Job Ticket: 56264

DST#: 1

ATTN: Pat Deenihan

Test Start: 2014.04.08 @ 17:27:00

GENERAL INFORMATION:

Formation: **LKC 'D - E'**

Deviated: No Whipstock: ft (KB)

Time Tool Opened: 20:08:48

Time Test Ended: 23:16:54

Test Type: Conventional Bottom Hole (Initial)

Tester: Chuck Smith

Unit No: 62

Interval: 3785.00 ft (KB) To 3821.00 ft (KB) (TVD)

Reference Elevations: 2602.00 ft (KB)

Total Depth: 3821.00 ft (KB) (TVD)

2594.00 ft (CF)

Hole Diameter: 7.88 inches Hole Condition: Good

KB to GR/CF: 8.00 ft

Serial #: 8645 Outside

Press@RunDepth: psig @ 3789.00 ft (KB)

Capacity: 8000.00 psig

Start Date: 2014.04.08

End Date:

2014.04.08

Last Calib.:

2014.04.08

Start Time: 17:27:10

End Time:

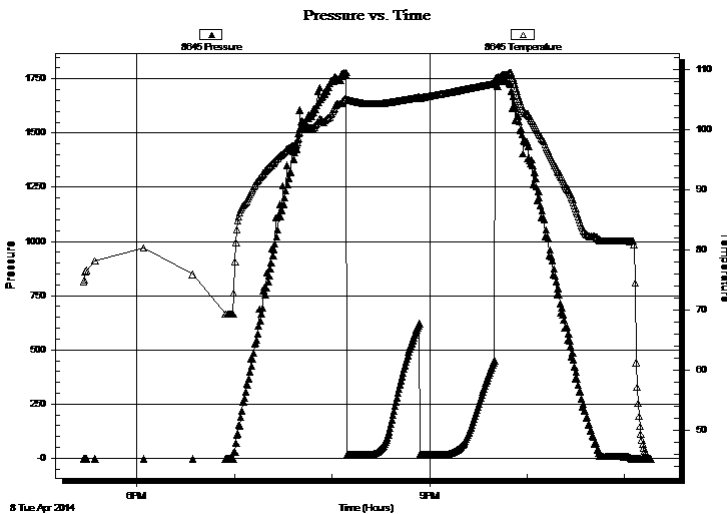
23:16:11

Time On Btm:

Time Off Btm:

TEST COMMENT: 15- 1/2" Blow receded to a weak surface blow.
30- No return.
15- No blow.
30- No return.

PRESSURE SUMMARY



Time (Min.)	Pressure (psig)	Temp (deg F)	Annotation

Recovery

Length (ft)	Description	Volume (bbl)
0.00	RW: @ Degrees F = PPM	0.00
2.00	M 100m with couple oil specs	0.03

Gas Rates

	Choke (inches)	Pressure (psig)	Gas Rate (Mcf/d)



**TRILOBITE
TESTING, INC**

DRILL STEM TEST REPORT

TOOL DIAGRAM

K3 Oil & Gas Operating Co.

M. Coberly Partners #36-10

211 Highland Cross Suite 230
Houston, TX 77073

36-15s-29w Gove,KS

Job Ticket: 56264

DST#: 1

ATTN: Pat Deenihan

Test Start: 2014.04.08 @ 17:27:00

Tool Information

Drill Pipe:	Length: 3764.00 ft	Diameter: 3.80 inches	Volume: 52.80 bbl	Tool Weight: 2300.00 lb
Heavy Wt. Pipe:	Length: 0.00 ft	Diameter: inches	Volume: 0.00 bbl	Weight set on Packer: 22000.00 lb
Drill Collar:	Length: 0.00 ft	Diameter: 2.25 inches	Volume: 0.00 bbl	Weight to Pull Loose: 70000.00 lb
			<u>Total Volume: 52.80 bbl</u>	Tool Chased 0.00 ft
Drill Pipe Above KB:	6.50 ft			String Weight: Initial 52000.00 lb
Depth to Top Packer:	3785.00 ft			Final 52000.00 lb
Depth to Bottom Packer:	ft			
Interval between Packers:	36.00 ft			
Tool Length:	63.50 ft			
Number of Packers:	2	Diameter: 6.75 inches		

Tool Comments:

Tool Description

Tool Description	Length (ft)	Serial No.	Position	Depth (ft)	Accum. Lengths
Change Over Sub	1.00			3758.50	
Shut In Tool	5.00			3763.50	
Hydraulic tool	5.00			3768.50	
Jars	5.00			3773.50	
Safety Joint	2.50			3776.00	
Packer	5.00			3781.00	27.50 Bottom Of Top Packer
Packer	4.00			3785.00	
Stubb	1.00			3786.00	
Perforations	3.00			3789.00	
Recorder	0.00	8357	Inside	3789.00	
Recorder	0.00	8645	Outside	3789.00	
Perforations	29.00			3818.00	
Bullnose	3.00			3821.00	36.00 Bottom Packers & Anchor

Total Tool Length: 63.50



**TRILOBITE
TESTING, INC**

DRILL STEM TEST REPORT

FLUID SUMMARY

K3 Oil & Gas Operating Co.

M. Coberly Partners #36-10

211 Highland Cross Suite 230
Houston, TX 77073

36-15s-29w Gove,KS

Job Ticket: 56264

DST#: 1

ATTN: Pat Deenihan

Test Start: 2014.04.08 @ 17:27:00

Mud and Cushion Information

Mud Type: Gel Chem

Cushion Type:

Oil API:

deg API

Mud Weight: 9.00 lb/gal

Cushion Length:

ft

Water Salinity:

ppm

Viscosity: 44.00 sec/qt

Cushion Volume:

bbbl

Water Loss: 6.39 in³

Gas Cushion Type:

Resistivity: ohm.m

Gas Cushion Pressure:

psig

Salinity: 1200.00 ppm

Filter Cake: 1.00 inches

Recovery Information

Recovery Table

Length ft	Description	Volume bbl
0.00	RW: @ Degrees F = PPM	0.000
2.00	M 100m with couple oil specs	0.028

Total Length: 2.00 ft Total Volume: 0.028 bbl

Num Fluid Samples: 0

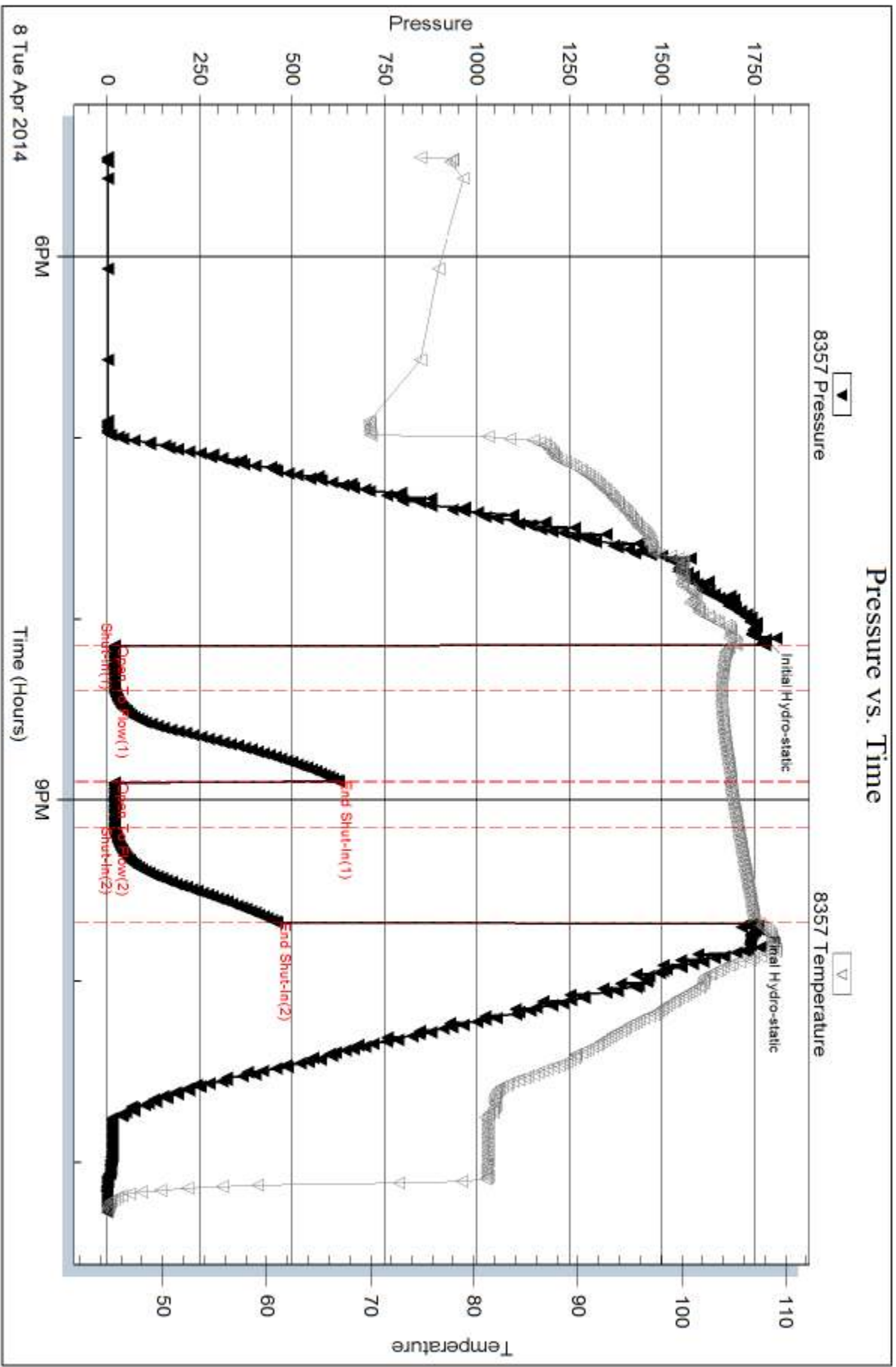
Num Gas Bombs: 0

Serial #:

Laboratory Name:

Laboratory Location:

Recovery Comments:

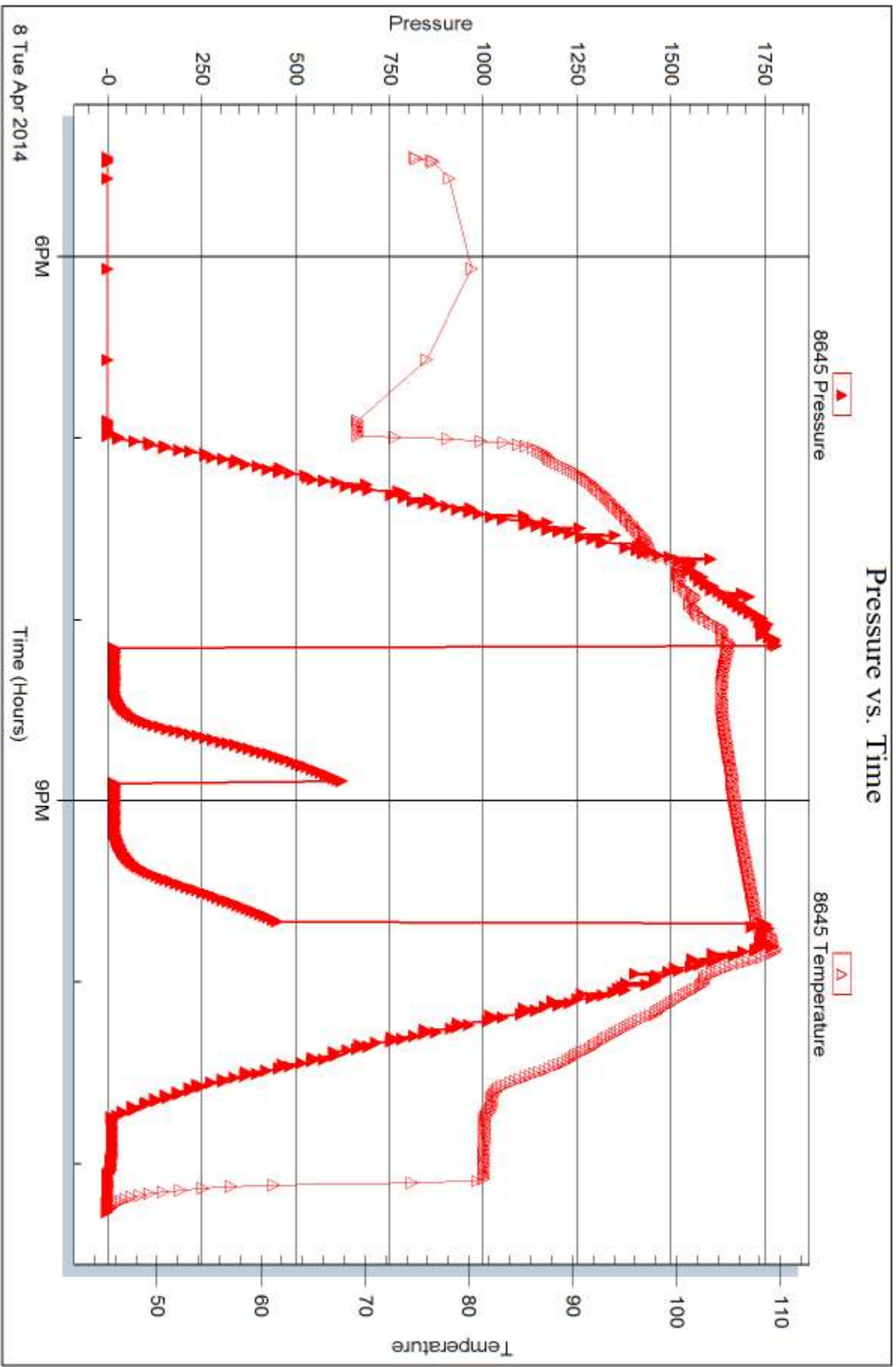


Serial #: 8645

Outside K3 Oil & Gas Operating Co.

36-15s-29w Gove KS

DST Test Number: 1



Triobite Testing, Inc

Ref. No: 56264

Printed: 2014.04.14 @ 16:33:19



DRILL STEM TEST REPORT

Prepared For: **K3 Oil & Gas Operating Co.**

211 Highland Cross Suite 230
Houston, TX 77073

ATTN: Pat Deenihan

36-15s-29w Gove,KS

M. Coberly Partners #36-10

Start Date: 2014.04.09 @ 15:03:00

End Date: 2014.04.09 @ 20:59:00

Job Ticket #: 56265 DST #: 2

Trilobite Testing, Inc
PO Box 362 Hays, KS 67601
ph: 785-625-4778 fax: 785-625-5620

Printed: 2014.04.14 @ 16:32:55

K3 Oil & Gas Operating Co.

M. Coberly Partners #36-10

36-15s-29w Gove,KS

DST # 2

LKC 'J'

2014.04.09



TRILOBITE TESTING, INC.

DRILL STEM TEST REPORT

K3 Oil & Gas Operating Co.

M. Coberly Partners #36-10

211 Highland Cross Suite 230
Houston, TX 77073

36-15s-29w Gove,KS

Job Ticket: 56265

DST#: 2

ATTN: Pat Deenihan

Test Start: 2014.04.09 @ 15:03:00

GENERAL INFORMATION:

Formation: **LKC 'J'**

Deviated: No Whipstock: ft (KB)

Time Tool Opened: 16:37:00

Time Test Ended: 20:59:00

Test Type: Conventional Bottom Hole (Reset)

Tester: Chuck Smith

Unit No: 62

Interval: 3961.00 ft (KB) To 3988.00 ft (KB) (TVD)

Reference Elevations: 2602.00 ft (KB)

Total Depth: 3988.00 ft (KB) (TVD)

2594.00 ft (CF)

Hole Diameter: 7.88 inches Hole Condition: Good

KB to GR/CF: 8.00 ft

Serial #: 8357

Inside

Press@RunDepth: 93.73 psig @ 3963.00 ft (KB)

Capacity: 8000.00 psig

Start Date: 2014.04.09

End Date:

2014.04.09

Last Calib.:

2014.04.09

Start Time: 15:03:05

End Time:

20:58:59

Time On Btm:

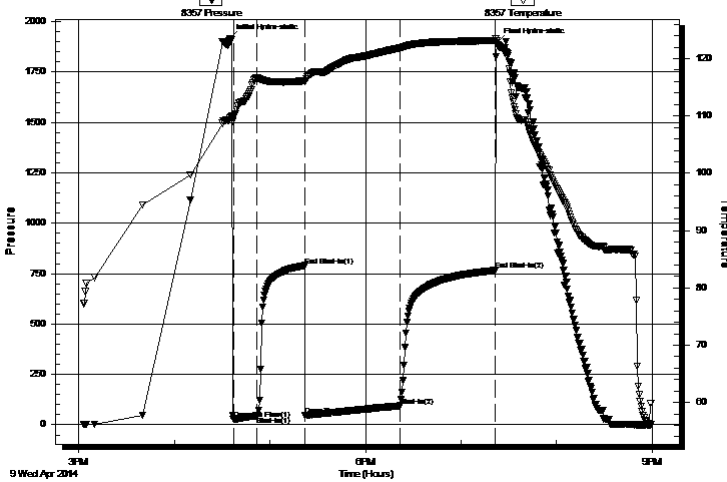
2014.04.09 @ 16:34:48

Time Off Btm:

2014.04.09 @ 19:22:24

TEST COMMENT: 15- 6" Blow .
30- No return.
60- B.O.B.@ 48 min.
60- No return.

Pressure vs. Time



PRESSURE SUMMARY

Time (Min.)	Pressure (psig)	Temp (deg F)	Annotation
0	1917.25	109.57	Initial Hydro-static
3	27.23	109.73	Open To Flow (1)
18	43.07	116.63	Shut-In(1)
48	790.16	116.14	End Shut-In(1)
48	47.03	115.95	Open To Flow (2)
107	93.73	121.86	Shut-In(2)
167	766.15	123.13	End Shut-In(2)
168	1897.83	123.20	Final Hydro-static

Recovery

Length (ft)	Description	Volume (bbl)
45.00	OCM 40o 60m	0.63
63.00	GOCWM 10g 10w 10o 70m	0.88
62.00	OSWM 30w 70m	0.87
0.00	10' GIP	0.00

* Recovery from multiple tests

Gas Rates

	Choke (inches)	Pressure (psig)	Gas Rate (Mcf/d)



TRILOBITE TESTING, INC.

DRILL STEM TEST REPORT

K3 Oil & Gas Operating Co.

M. Coberly Partners #36-10

211 Highland Cross Suite 230
Houston, TX 77073

36-15s-29w Gove,KS

Job Ticket: 56265

DST#: 2

ATTN: Pat Deenihan

Test Start: 2014.04.09 @ 15:03:00

GENERAL INFORMATION:

Formation: **LKC 'J'**

Deviated: No Whipstock: ft (KB)

Time Tool Opened: 16:37:00

Time Test Ended: 20:59:00

Test Type: Conventional Bottom Hole (Reset)

Tester: Chuck Smith

Unit No: 62

Interval: 3961.00 ft (KB) To 3988.00 ft (KB) (TVD)

Reference Elevations: 2602.00 ft (KB)

Total Depth: 3988.00 ft (KB) (TVD)

2594.00 ft (CF)

Hole Diameter: 7.88 inches Hole Condition: Good

KB to GR/CF: 8.00 ft

Serial #: 8645 Outside

Press@RunDepth: psig @ 3963.00 ft (KB)

Capacity: 8000.00 psig

Start Date: 2014.04.09

End Date:

2014.04.09

Last Calib.:

2014.04.09

Start Time: 15:02:40

End Time:

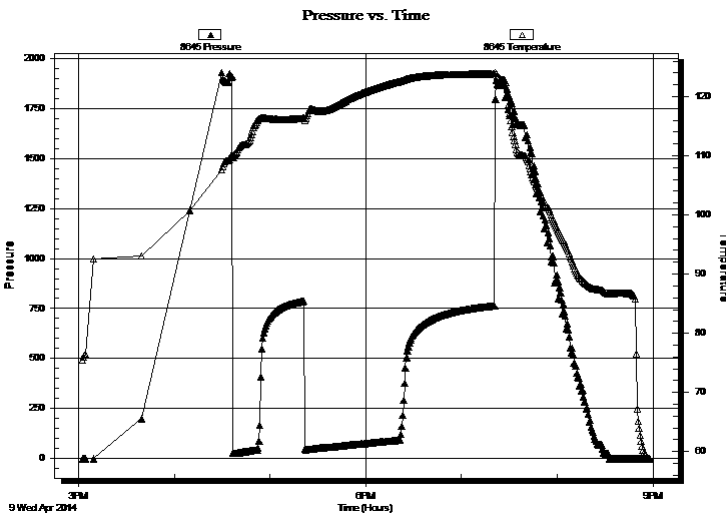
20:58:04

Time On Btm:

Time Off Btm:

TEST COMMENT: 15- 6" Blow .
30- No return.
60- B.O.B.@ 48 min.
60- No return.

PRESSURE SUMMARY



Time (Min.)	Pressure (psig)	Temp (deg F)	Annotation

Recovery

Length (ft)	Description	Volume (bbl)
45.00	OCM 40o 60m	0.63
63.00	GOCWM 10g 10w 10o 70m	0.88
62.00	OSWM 30w 70m	0.87
0.00	10' GIP	0.00

Gas Rates

	Choke (inches)	Pressure (psig)	Gas Rate (Mcf/d)

* Recovery from multiple tests



**TRILOBITE
TESTING, INC**

DRILL STEM TEST REPORT

TOOL DIAGRAM

K3 Oil & Gas Operating Co.

M. Coberly Partners #36-10

211 Highland Cross Suite 230
Houston, TX 77073

36-15s-29w Gove,KS

Job Ticket: 56265

DST#: 2

ATTN: Pat Deenihan

Test Start: 2014.04.09 @ 15:03:00

Tool Information

Drill Pipe:	Length: 3955.00 ft	Diameter: 3.80 inches	Volume: 55.48 bbl	Tool Weight: 2000.00 lb
Heavy Wt. Pipe:	Length: 0.00 ft	Diameter: inches	Volume: 0.00 bbl	Weight set on Packer: 22000.00 lb
Drill Collar:	Length: 0.00 ft	Diameter: 2.25 inches	Volume: 0.00 bbl	Weight to Pull Loose: 70000.00 lb
			<u>Total Volume: 55.48 bbl</u>	Tool Chased 0.00 ft
Drill Pipe Above KB:	14.00 ft			String Weight: Initial 60000.00 lb
Depth to Top Packer:	3961.00 ft			Final 60000.00 lb
Depth to Bottom Packer:	ft			
Interval between Packers:	27.00 ft			
Tool Length:	47.00 ft			
Number of Packers:	2	Diameter: 6.75 inches		

Tool Comments:

Tool Description

Tool Description	Length (ft)	Serial No.	Position	Depth (ft)	Accum. Lengths
Change Over Sub	1.00			3942.00	
Shut In Tool	5.00			3947.00	
Hydraulic tool	5.00			3952.00	
Packer	5.00			3957.00	20.00 Bottom Of Top Packer
Packer	4.00			3961.00	
Stubb	1.00			3962.00	
Perforations	1.00			3963.00	
Recorder	0.00	8357	Inside	3963.00	
Recorder	0.00	8645	Outside	3963.00	
Perforations	22.00			3985.00	
Bullnose	3.00			3988.00	27.00 Bottom Packers & Anchor

Total Tool Length: 47.00



**TRILOBITE
TESTING, INC**

DRILL STEM TEST REPORT

FLUID SUMMARY

K3 Oil & Gas Operating Co.

M. Coberly Partners #36-10

211 Highland Cross Suite 230
Houston, TX 77073

36-15s-29w Gove,KS

Job Ticket: 56265

DST#: 2

ATTN: Pat Deenihan

Test Start: 2014.04.09 @ 15:03:00

Mud and Cushion Information

Mud Type: Gel Chem

Cushion Type:

Oil API:

deg API

Mud Weight: 9.00 lb/gal

Cushion Length:

ft

Water Salinity:

38000 ppm

Viscosity: 53.00 sec/qt

Cushion Volume:

bbbl

Water Loss: 7.19 in³

Gas Cushion Type:

Resistivity: ohm.m

Gas Cushion Pressure:

psig

Salinity: 2000.00 ppm

Filter Cake: 1.00 inches

Recovery Information

Recovery Table

Length ft	Description	Volume bbbl
45.00	OCM 40o 60m	0.631
63.00	GOCWM 10g 10w 10o 70m	0.884
62.00	OSWM 30w 70m	0.870
0.00	10' GIP	0.000

Total Length: 170.00 ft Total Volume: 2.385 bbl

Num Fluid Samples: 0

Num Gas Bombs: 0

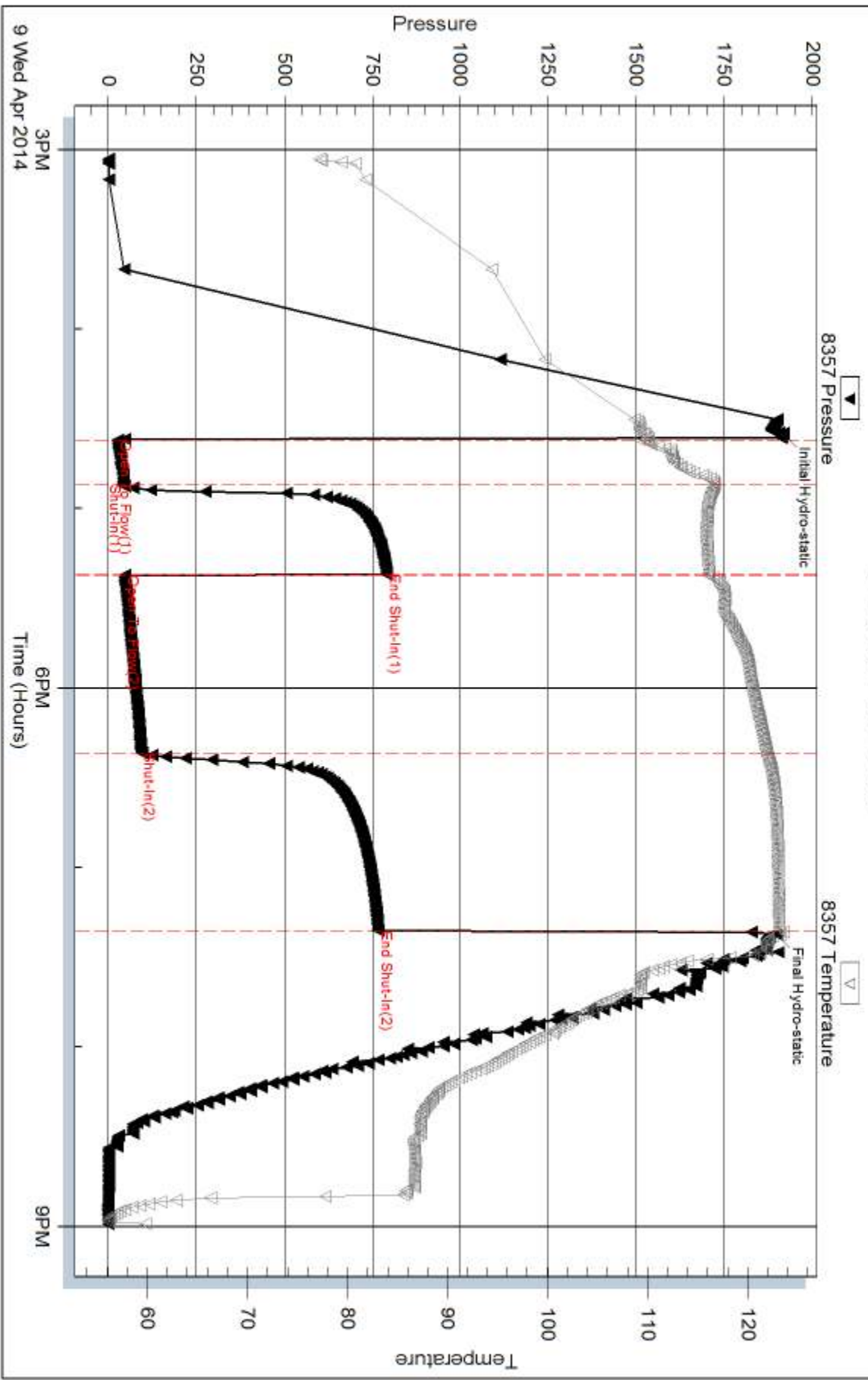
Serial #:

Laboratory Name:

Laboratory Location:

Recovery Comments: RW: .220 @ 60 Degrees F = 38000 PPM

Pressure vs. Time



9 Wed Apr 2014 3PM

6PM

9PM

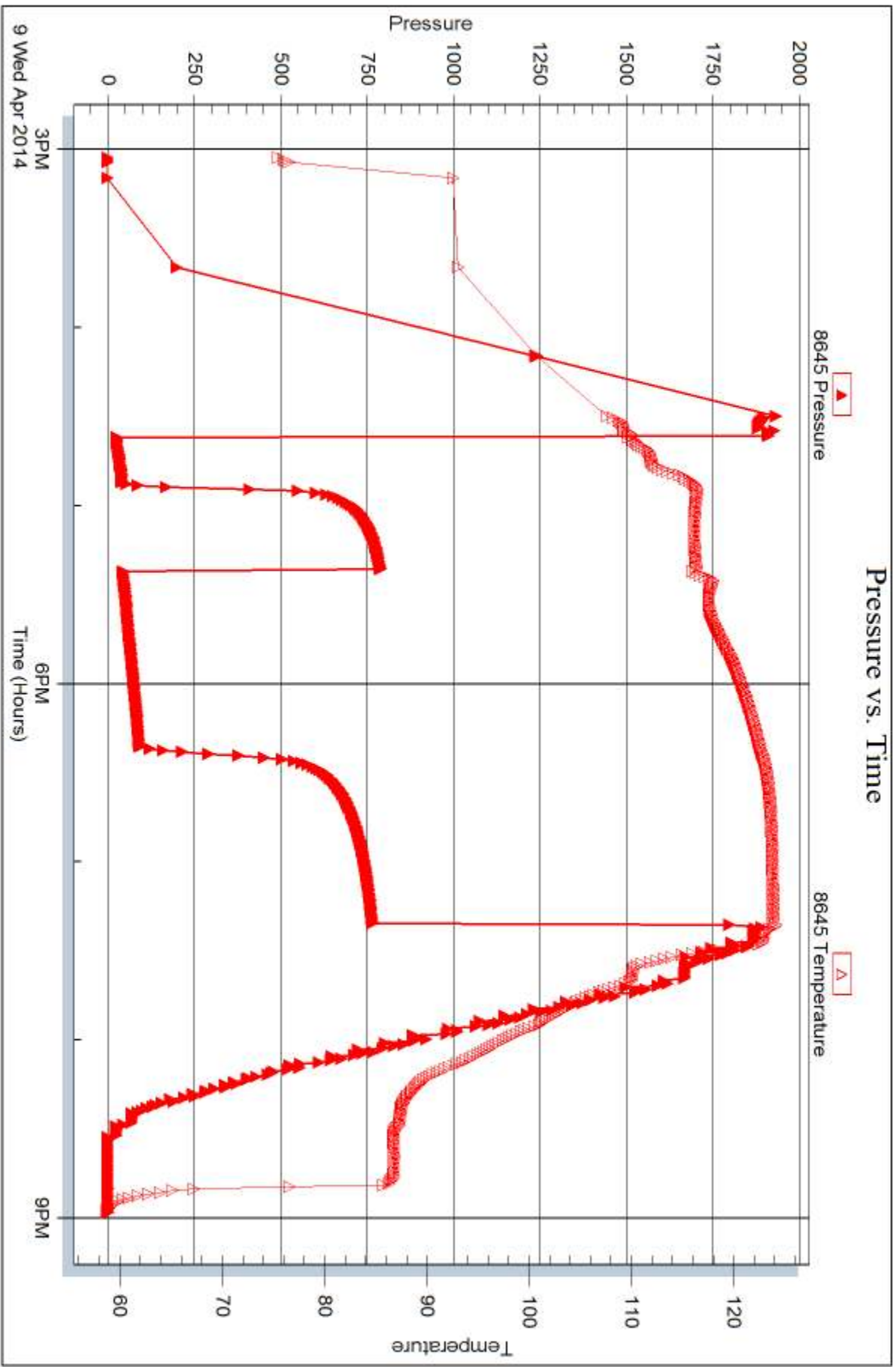
Time (Hours)

Serial #: 8645

Outside K3 Oil & Gas Operating Co.

36-15s-29w Gove KS

DST Test Number: 2



Triobite Testing, Inc

Ref. No: 56265

Printed: 2014.04.14 @ 16:32:58



DRILL STEM TEST REPORT

Prepared For: **K3 Oil & Gas Operating Co.**

211 Highland Cross Suite 230
Houston, TX 77073

ATTN: Pat Deenihan

36-15s-29w Gove,KS

M. Coberly Partners #36-10

Start Date: 2014.04.10 @ 08:00:00

End Date: 2014.04.10 @ 13:49:00

Job Ticket #: 56266 DST #: 3

Trilobite Testing, Inc

PO Box 362 Hays, KS 67601

ph: 785-625-4778 fax: 785-625-5620

Printed: 2014.04.14 @ 16:32:33

K3 Oil & Gas Operating Co.

M. Coberly Partners #36-10

36-15s-29w Gove,KS

DST # 3

LKC 'L'

2014.04.10



**TRILOBITE
TESTING, INC**

DRILL STEM TEST REPORT

K3 Oil & Gas Operating Co.

M. Coberly Partners #36-10

211 Highland Cross Suite 230
Houston, TX 77073

36-15s-29w Gove,KS

Job Ticket: 56266

DST#: 3

ATTN: Pat Deenihan

Test Start: 2014.04.10 @ 08:00:00

GENERAL INFORMATION:

Formation: **LKC 'L'**

Deviated: No Whipstock: ft (KB)

Time Tool Opened: 10:17:18

Time Test Ended: 13:49:00

Test Type: Conventional Bottom Hole (Reset)

Tester: Chuck Smith

Unit No: 62

Interval: 4027.00 ft (KB) To 4052.00 ft (KB) (TVD)

Reference Elevations: 2602.00 ft (KB)

Total Depth: 4052.00 ft (KB) (TVD)

2594.00 ft (CF)

Hole Diameter: 7.88 inches Hole Condition: Good

KB to GR/CF: 8.00 ft

Serial #: 8357

Inside

Press@RunDepth: 273.51 psig @ 4029.00 ft (KB)

Capacity: 8000.00 psig

Start Date: 2014.04.10

End Date:

2014.04.10

Last Calib.:

2014.04.10

Start Time: 08:00:05

End Time:

13:48:59

Time On Btm:

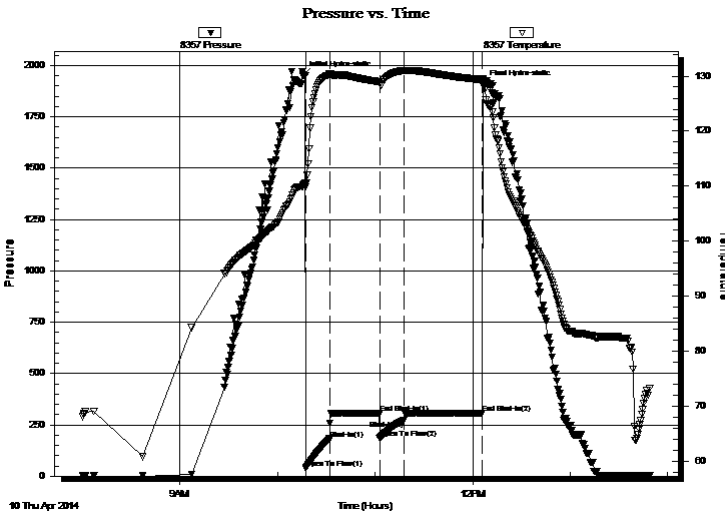
2014.04.10 @ 10:15:24

Time Off Btm:

2014.04.10 @ 12:06:18

TEST COMMENT: 15- B.O.B. @ 4 min.
30- Weak surface return.
15- B.O.B. @ 7 min.
45- Weak surface return.

PRESSURE SUMMARY



Time (Min.)	Pressure (psig)	Temp (deg F)	Annotation
0	1951.86	110.00	Initial Hydro-static
2	38.26	109.90	Open To Flow (1)
17	182.05	130.35	Shut-In(1)
48	307.57	128.93	End Shut-In(1)
48	183.16	128.87	Open To Flow (2)
63	273.51	131.02	Shut-In(2)
111	307.17	129.34	End Shut-In(2)
111	1909.06	129.44	Final Hydro-static

Recovery

Length (ft)	Description	Volume (bbl)
45.00	GOCWM 5g 5o 10w 80m	0.63
62.00	GOCMW 5g 5o 40m 50w	0.87
248.00	OSMW 15m 85w	3.48
186.00	OSMW 5m 95w	2.61
0.00	135' GIP	0.00

* Recovery from multiple tests

Gas Rates

	Choke (inches)	Pressure (psig)	Gas Rate (Mcf/d)



**TRILOBITE
TESTING, INC**

DRILL STEM TEST REPORT

K3 Oil & Gas Operating Co.

M. Coberly Partners #36-10

211 Highland Cross Suite 230
Houston, TX 77073

36-15s-29w Gove,KS

Job Ticket: 56266

DST#: 3

ATTN: Pat Deenihan

Test Start: 2014.04.10 @ 08:00:00

GENERAL INFORMATION:

Formation: **LKC 'L'**

Deviated: No Whipstock: ft (KB)

Time Tool Opened: 10:17:18

Time Test Ended: 13:49:00

Test Type: Conventional Bottom Hole (Reset)

Tester: Chuck Smith

Unit No: 62

Interval: 4027.00 ft (KB) To 4052.00 ft (KB) (TVD)

Reference Elevations: 2602.00 ft (KB)

Total Depth: 4052.00 ft (KB) (TVD)

2594.00 ft (CF)

Hole Diameter: 7.88 inches Hole Condition: Good

KB to GR/CF: 8.00 ft

Serial #: 8645 Outside

Press@RunDepth: psig @ 4029.00 ft (KB)

Capacity: 8000.00 psig

Start Date: 2014.04.10

End Date:

2014.04.10

Last Calib.:

2014.04.10

Start Time: 08:00:05

End Time:

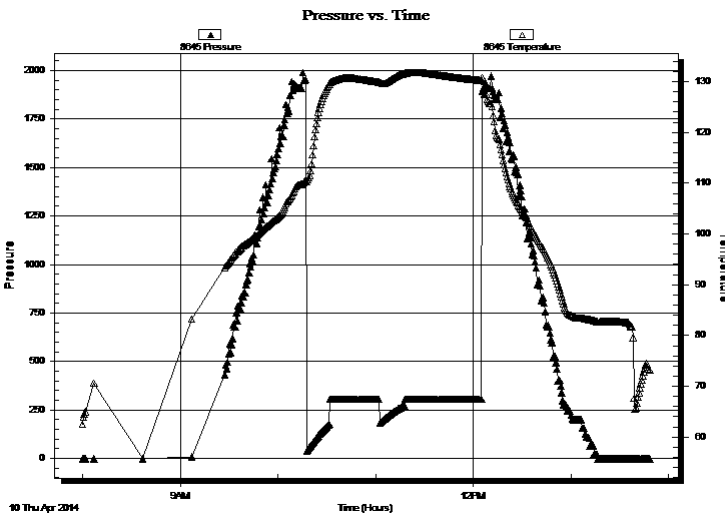
13:48:12

Time On Btm:

Time Off Btm:

TEST COMMENT: 15- B.O.B. @ 4 min.
30- Weak surface return.
15- B.O.B. @ 7 min.
45- Weak surface return.

PRESSURE SUMMARY



Time (Min.)	Pressure (psig)	Temp (deg F)	Annotation

Recovery

Length (ft)	Description	Volume (bbl)
45.00	GOCWM 5g 5o 10w 80m	0.63
62.00	GOCMW 5g 5o 40m 50w	0.87
248.00	OSMW 15m 85w	3.48
186.00	OSMW 5m 95w	2.61
0.00	135' GIP	0.00

Gas Rates

Choke (inches)	Pressure (psig)	Gas Rate (Mcf/d)

* Recovery from multiple tests



**TRILOBITE
TESTING, INC**

DRILL STEM TEST REPORT

TOOL DIAGRAM

K3 Oil & Gas Operating Co.

M. Coberly Partners #36-10

211 Highland Cross Suite 230
Houston, TX 77073

36-15s-29w Gove,KS

Job Ticket: 56266

DST#: 3

ATTN: Pat Deenihan

Test Start: 2014.04.10 @ 08:00:00

Tool Information

Drill Pipe:	Length: 4018.00 ft	Diameter: 3.80 inches	Volume: 56.36 bbl	Tool Weight: 2000.00 lb
Heavy Wt. Pipe:	Length: 0.00 ft	Diameter: inches	Volume: 0.00 bbl	Weight set on Packer: 22000.00 lb
Drill Collar:	Length: 0.00 ft	Diameter: 2.25 inches	Volume: 0.00 bbl	Weight to Pull Loose: 70000.00 lb
			<u>Total Volume: 56.36 bbl</u>	Tool Chased 0.00 ft
Drill Pipe Above KB:	11.00 ft			String Weight: Initial 54000.00 lb
Depth to Top Packer:	4027.00 ft			Final 56000.00 lb
Depth to Bottom Packer:	ft			
Interval between Packers:	25.00 ft			
Tool Length:	45.00 ft			
Number of Packers:	2	Diameter: 6.75 inches		

Tool Comments:

Tool Description

Tool Description	Length (ft)	Serial No.	Position	Depth (ft)	Accum. Lengths
Change Over Sub	1.00			4008.00	
Shut In Tool	5.00			4013.00	
Hydraulic tool	5.00			4018.00	
Packer	5.00			4023.00	20.00 Bottom Of Top Packer
Packer	4.00			4027.00	
Stubb	1.00			4028.00	
Perforations	1.00			4029.00	
Recorder	0.00	8357	Inside	4029.00	
Recorder	0.00	8645	Outside	4029.00	
Perforations	20.00			4049.00	
Bullnose	3.00			4052.00	25.00 Bottom Packers & Anchor

Total Tool Length: 45.00



**TRILOBITE
TESTING, INC**

DRILL STEM TEST REPORT

FLUID SUMMARY

K3 Oil & Gas Operating Co.

M. Coberly Partners #36-10

211 Highland Cross Suite 230
Houston, TX 77073

36-15s-29w Gove,KS

Job Ticket: 56266

DST#: 3

ATTN: Pat Deenihan

Test Start: 2014.04.10 @ 08:00:00

Mud and Cushion Information

Mud Type: Gel Chem

Cushion Type:

Oil API:

deg API

Mud Weight: 9.00 lb/gal

Cushion Length:

ft

Water Salinity:

74000 ppm

Viscosity: 53.00 sec/qt

Cushion Volume:

bbbl

Water Loss: 6.39 in³

Gas Cushion Type:

Resistivity: ohm.m

Gas Cushion Pressure:

psig

Salinity: 2400.00 ppm

Filter Cake: 1.00 inches

Recovery Information

Recovery Table

Length ft	Description	Volume bbbl
45.00	GOCWM 5g 5o 10w 80m	0.631
62.00	GOCMW 5g 5o 40m 50w	0.870
248.00	OSMW 15m 85w	3.479
186.00	OSMW 5m 95w	2.609
0.00	135' GIP	0.000

Total Length: 541.00 ft Total Volume: 7.589 bbl

Num Fluid Samples: 0

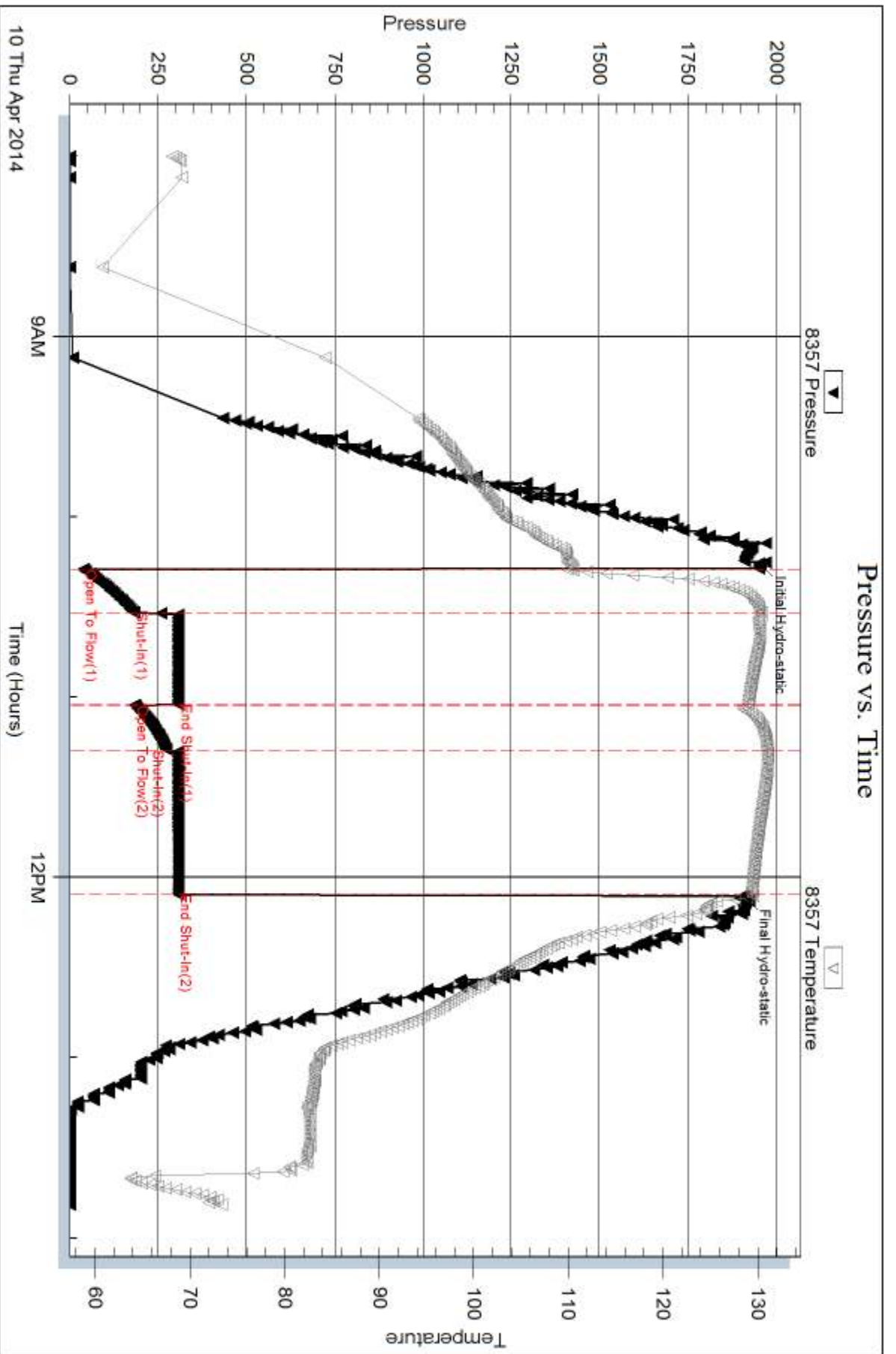
Num Gas Bombs: 0

Serial #:

Laboratory Name:

Laboratory Location:

Recovery Comments: RW: .113 @ 64 Degrees F = 74000 PPM

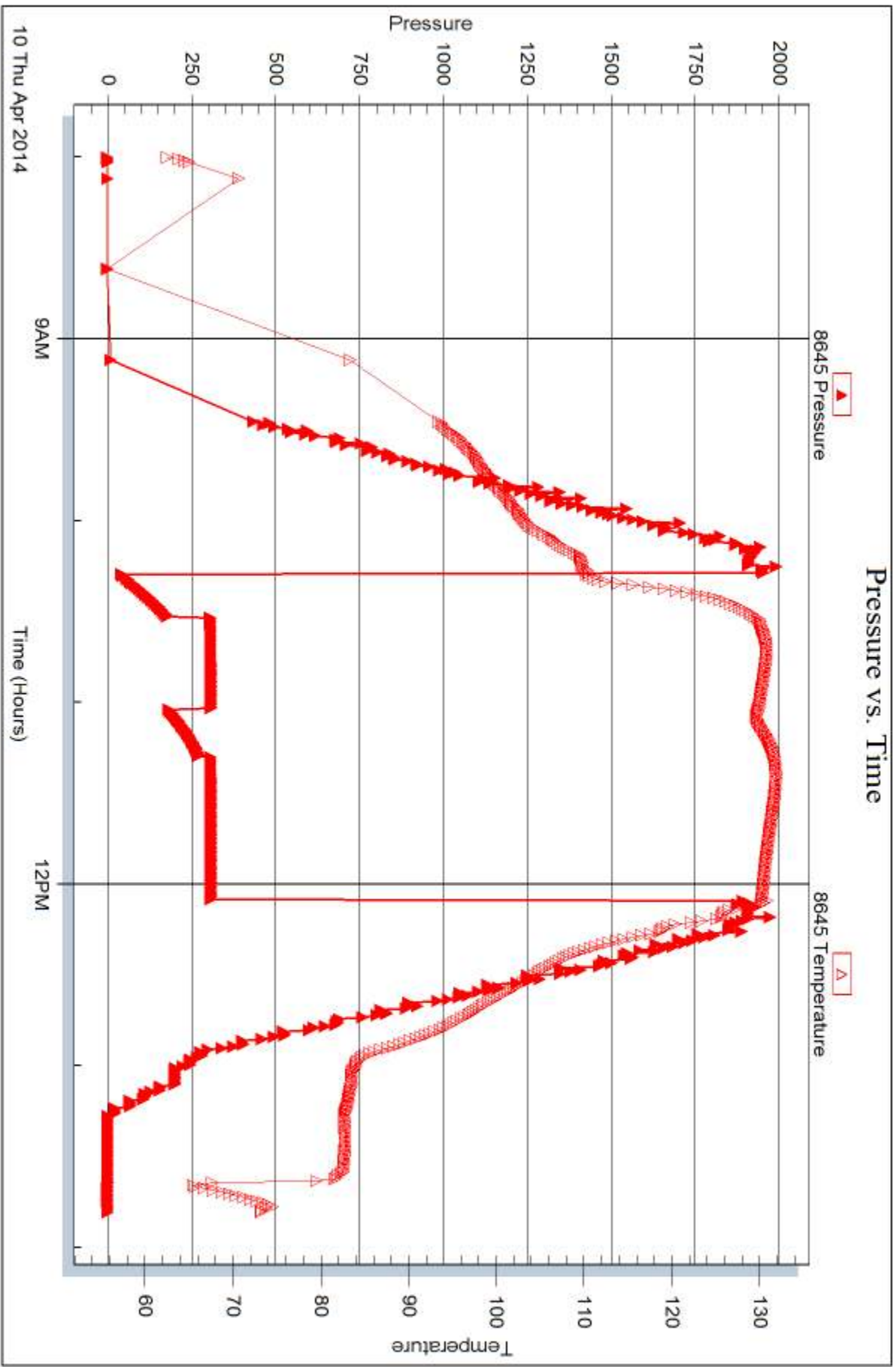


Serial #: 8645

Outside K3 Oil & Gas Operating Co.

36-15s-29w Gove KS

DST Test Number: 3





DRILL STEM TEST REPORT

Prepared For: **K3 Oil & Gas Operating Co.**

211 Highland Cross Suite 230
Houston, TX 77073

ATTN: Pat Deenihan

36-15s-29w Gove,KS

M. Coberly Partners #36-10

Start Date: 2014.04.11 @ 20:19:00

End Date: 2014.04.12 @ 04:09:42

Job Ticket #: 56267 DST #: 4

Trilobite Testing, Inc

PO Box 362 Hays, KS 67601

ph: 785-625-4778 fax: 785-625-5620

Printed: 2014.04.14 @ 16:32:11



TRILOBITE TESTING, INC

DRILL STEM TEST REPORT

K3 Oil & Gas Operating Co.

M. Coberly Partners #36-10

211 Highland Cross Suite 230
Houston, TX 77073

36-15s-29w Gove,KS

Job Ticket: 56267

DST#: 4

ATTN: Pat Deenihan

Test Start: 2014.04.11 @ 20:19:00

GENERAL INFORMATION:

Formation: **Pawnee - Ft. Scott**

Deviated: No Whipstock: ft (KB)

Time Tool Opened: 22:09:00

Time Test Ended: 04:09:42

Test Type: Conventional Bottom Hole (Reset)

Tester: Chuck Smith

Unit No: 62

Interval: 4174.00 ft (KB) To 4280.00 ft (KB) (TVD)

Reference Elevations: 2602.00 ft (KB)

Total Depth: 4280.00 ft (KB) (TVD)

2594.00 ft (CF)

Hole Diameter: 7.88 inches Hole Condition: Good

KB to GR/CF: 8.00 ft

Serial #: 8357

Inside

Press@RunDepth: 265.34 psig @ 4176.00 ft (KB)

Capacity: 8000.00 psig

Start Date: 2014.04.11

End Date:

2014.04.12

Last Calib.:

2014.04.12

Start Time: 20:19:05

End Time:

04:09:42

Time On Btm:

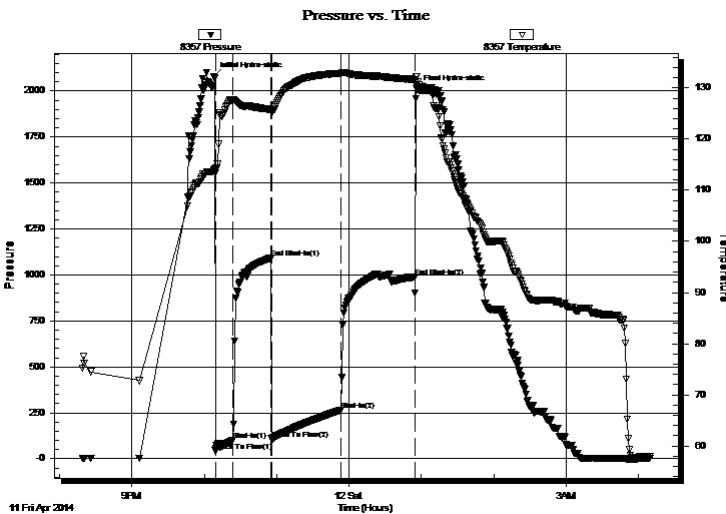
2014.04.11 @ 22:07:30

Time Off Btm:

2014.04.12 @ 00:55:54

TEST COMMENT: 15- B.O.B. @ 11 min.
32- 1 1/2" Return.
60- B.O.B. @ 7 min.
60- B.O.B. @ 16 min.

PRESSURE SUMMARY



Time (Min.)	Pressure (psig)	Temp (deg F)	Annotation
0	2078.85	113.83	Initial Hydro-static
2	43.16	113.41	Open To Flow (1)
17	101.38	127.71	Shut-In(1)
48	1091.60	125.81	End Shut-In(1)
49	107.13	125.50	Open To Flow (2)
106	265.34	132.88	Shut-In(2)
168	989.73	131.70	End Shut-In(2)
169	2009.94	132.17	Final Hydro-static

Recovery

Length (ft)	Description	Volume (bbl)
0.00	RW: .150 @ 52 Degrees F = 76000 PPM	0.00
0.00	1740' GIP	0.00
248.00	OSMW 20m 80w	3.48
186.00	GWOCM 25g 5w 5o 65m	2.61
62.00	GMCO 20g 40m 40o	0.87
62.00	CGO 30g 70o	0.87

* Recovery from multiple tests

Gas Rates

Choke (inches)	Pressure (psig)	Gas Rate (Mcf/d)



TRILOBITE TESTING, INC.

DRILL STEM TEST REPORT

K3 Oil & Gas Operating Co.

M. Coberly Partners #36-10

211 Highland Cross Suite 230
Houston, TX 77073

36-15s-29w Gove,KS

Job Ticket: 56267

DST#: 4

ATTN: Pat Deenihan

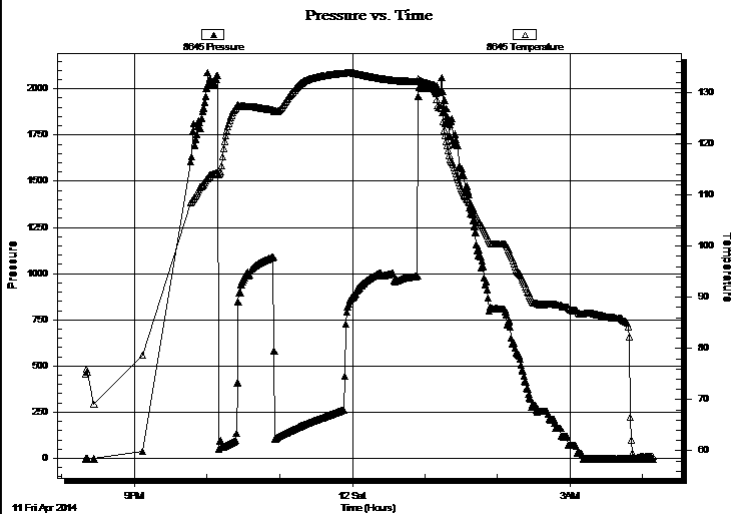
Test Start: 2014.04.11 @ 20:19:00

GENERAL INFORMATION:

Formation: **Pawnee - Ft. Scott**
 Deviated: No Whipstock: ft (KB)
 Test Type: Conventional Bottom Hole (Reset)
 Time Tool Opened: 22:09:00 Tester: Chuck Smith
 Time Test Ended: 04:09:42 Unit No: 62
 Interval: **4174.00 ft (KB) To 4280.00 ft (KB) (TVD)** Reference Elevations: 2602.00 ft (KB)
 Total Depth: 4280.00 ft (KB) (TVD) 2594.00 ft (CF)
 Hole Diameter: 7.88 inches Hole Condition: Good KB to GR/CF: 8.00 ft

Serial #: 8645 Outside
 Press@RunDepth: psig @ 4176.00 ft (KB) Capacity: 8000.00 psig
 Start Date: 2014.04.11 End Date: 2014.04.12 Last Calib.: 2014.04.12
 Start Time: 20:19:35 End Time: 04:08:29 Time On Btm:
 Time Off Btm:

TEST COMMENT: 15- B.O.B. @ 11 min.
 32- 1 1/2" Return.
 60- B.O.B. @ 7 min.
 60- B.O.B. @ 16 min.



PRESSURE SUMMARY

Time (Min.)	Pressure (psig)	Temp (deg F)	Annotation

Recovery

Length (ft)	Description	Volume (bbl)
0.00	RW: .150 @ 52 Degrees F = 76000 PPM	0.00
0.00	1740' GIP	0.00
248.00	OSMW 20m 80w	3.48
186.00	GWOCM 25g 5w 5o 65m	2.61
62.00	GMCO 20g 40m 40o	0.87
62.00	CGO 30g 70o	0.87

* Recovery from multiple tests

Gas Rates

Choke (inches)	Pressure (psig)	Gas Rate (Mcf/d)



**TRILOBITE
TESTING, INC**

DRILL STEM TEST REPORT

TOOL DIAGRAM

K3 Oil & Gas Operating Co.

M. Coberly Partners #36-10

211 Highland Cross Suite 230
Houston, TX 77073

36-15s-29w Gove,KS

Job Ticket: 56267

DST#: 4

ATTN: Pat Deenihan

Test Start: 2014.04.11 @ 20:19:00

Tool Information

Drill Pipe:	Length: 4173.00 ft	Diameter: 3.80 inches	Volume: 58.54 bbl	Tool Weight: 2300.00 lb
Heavy Wt. Pipe:	Length: 0.00 ft	Diameter: inches	Volume: 0.00 bbl	Weight set on Packer: 22000.00 lb
Drill Collar:	Length: 0.00 ft	Diameter: 2.25 inches	Volume: 0.00 bbl	Weight to Pull Loose: 65000.00 lb
			<u>Total Volume: 58.54 bbl</u>	Tool Chased 0.00 ft
Drill Pipe Above KB:	26.50 ft			String Weight: Initial 57000.00 lb
Depth to Top Packer:	4174.00 ft			Final 58000.00 lb
Depth to Bottom Packer:	ft			
Interval between Packers:	106.00 ft			
Tool Length:	133.50 ft			
Number of Packers:	2	Diameter: 6.75 inches		

Tool Comments:

Tool Description

Tool Description	Length (ft)	Serial No.	Position	Depth (ft)	Accum. Lengths
Change Over Sub	1.00			4147.50	
Shut In Tool	5.00			4152.50	
Hydraulic tool	5.00			4157.50	
Jars	5.00			4162.50	
Safety Joint	2.50			4165.00	
Packer	5.00			4170.00	27.50 Bottom Of Top Packer
Packer	4.00			4174.00	
Stubb	1.00			4175.00	
Perforations	1.00			4176.00	
Recorder	0.00	8357	Inside	4176.00	
Recorder	0.00	8645	Outside	4176.00	
Perforations	6.00			4182.00	
Change Over Sub	1.00			4183.00	
Drill Pipe	93.00			4276.00	
Change Over Sub	1.00			4277.00	
Bullnose	3.00			4280.00	106.00 Bottom Packers & Anchor
Total Tool Length:	133.50				



**TRILOBITE
TESTING, INC**

DRILL STEM TEST REPORT

FLUID SUMMARY

K3 Oil & Gas Operating Co.

M. Coberly Partners #36-10

211 Highland Cross Suite 230
Houston, TX 77073

36-15s-29w Gove,KS

Job Ticket: 56267

DST#: 4

ATTN: Pat Deenihan

Test Start: 2014.04.11 @ 20:19:00

Mud and Cushion Information

Mud Type: Gel Chem

Cushion Type:

Oil API:

35 deg API

Mud Weight: 9.00 lb/gal

Cushion Length:

ft

Water Salinity:

76000 ppm

Viscosity: 54.00 sec/qt

Cushion Volume:

bbbl

Water Loss: 6.38 in³

Gas Cushion Type:

Resistivity: ohm.m

Gas Cushion Pressure:

psig

Salinity: 2800.00 ppm

Filter Cake: 1.00 inches

Recovery Information

Recovery Table

Length ft	Description	Volume bbbl
0.00	RW: .150 @ 52 Degrees F = 76000 PPM	0.000
0.00	1740' GIP	0.000
248.00	OSMW 20m 80w	3.479
186.00	GWOCM 25g 5w 5o 65m	2.609
62.00	GMCO 20g 40m 40o	0.870
62.00	CGO 30g 70o	0.870

Total Length: 558.00 ft Total Volume: 7.828 bbl

Num Fluid Samples: 0

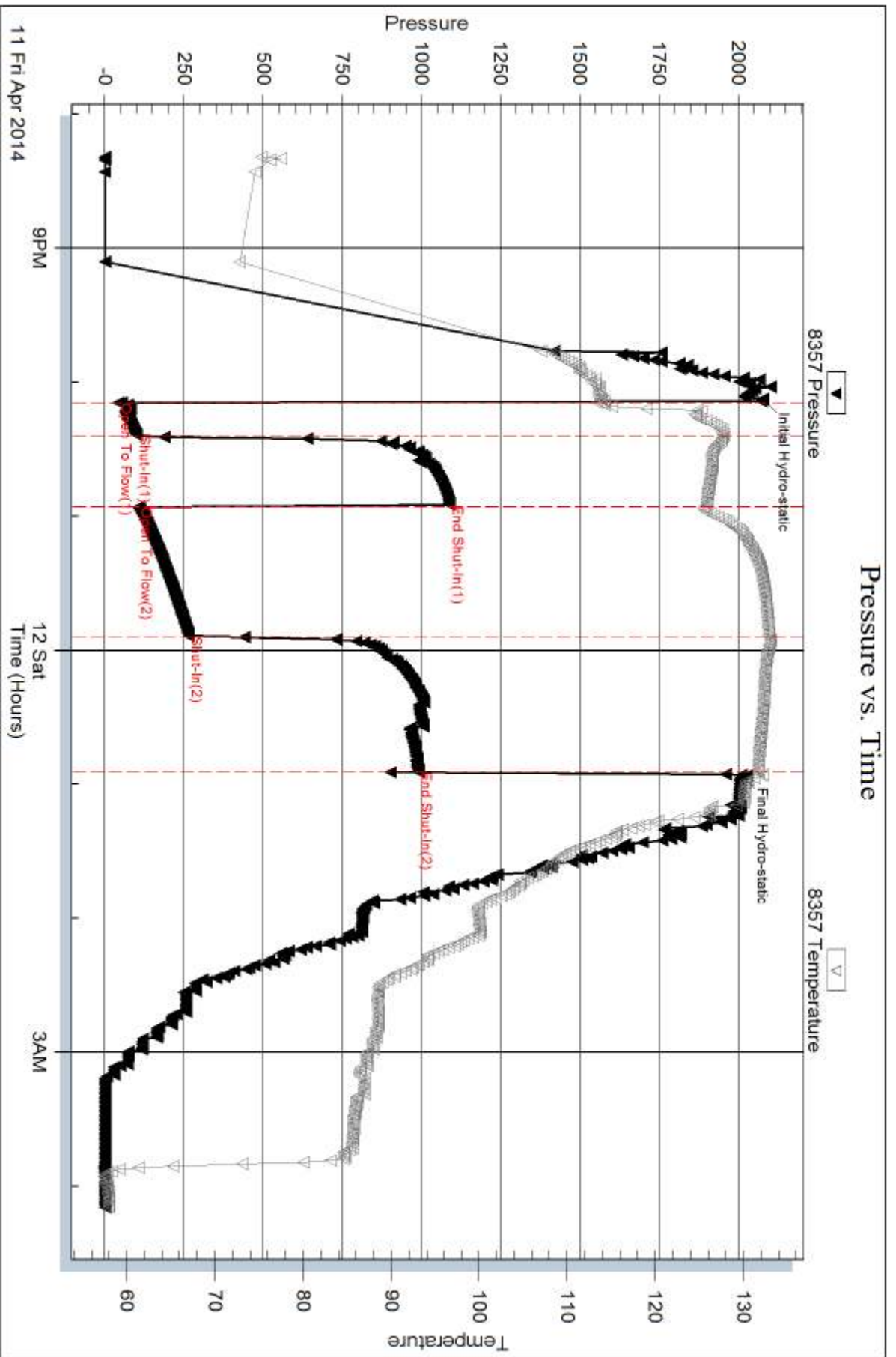
Num Gas Bombs: 0

Serial #:

Laboratory Name:

Laboratory Location:

Recovery Comments: API: 35 @ 60 Degrees F = 35.

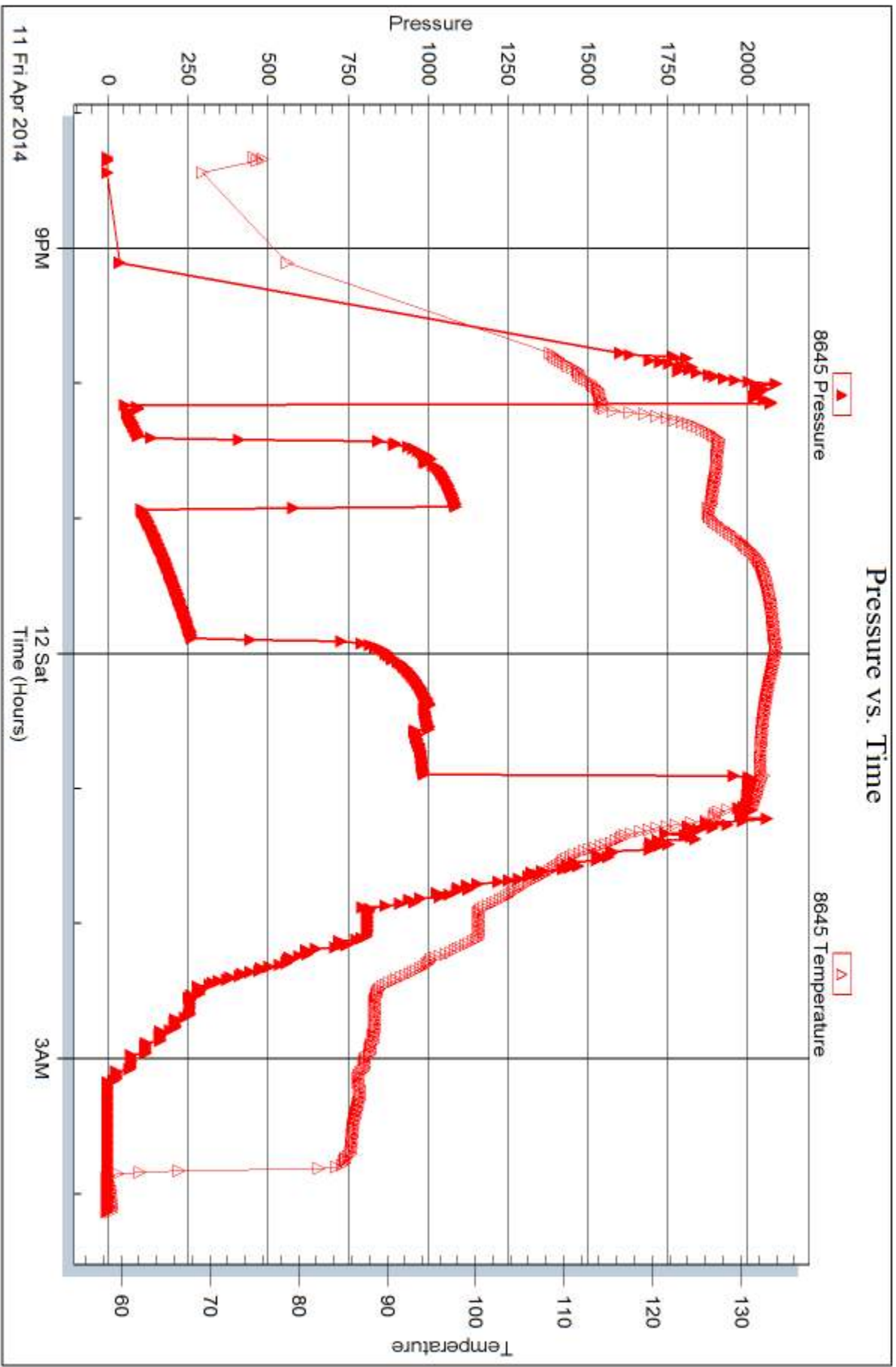


Serial #: 8645

Outside K3 Oil & Gas Operating Co.

36-15s-29w Gove KS

DST Test Number: 4



Trilobite Testing, Inc

Ref. No: 56267

Printed: 2014.04.14 @ 16:32:13



DRILL STEM TEST REPORT

Prepared For: **K3 Oil & Gas Operating Co.**

211 Highland Cross Suite 230
Houston, TX 77073

ATTN: Pat Deenihan

36-15s-29w Gove,KS

M. Coberly Partners #36-10

Start Date: 2014.04.12 @ 14:39:00

End Date: 2014.04.13 @ 01:35:42

Job Ticket #: 56268 DST #: 5

Trilobite Testing, Inc

PO Box 362 Hays, KS 67601

ph: 785-625-4778 fax: 785-625-5620

Printed: 2014.04.14 @ 16:30:57

K3 Oil & Gas Operating Co.

M. Coberly Partners #36-10

36-15s-29w Gove,KS

DST # 5

Johnson

2014.04.12



TRILOBITE TESTING, INC

DRILL STEM TEST REPORT

K3 Oil & Gas Operating Co.

M. Coberly Partners #36-10

211 Highland Cross Suite 230
Houston, TX 77073

36-15s-29w Gove,KS

Job Ticket: 56268

DST#: 5

ATTN: Pat Deenihan

Test Start: 2014.04.12 @ 14:39:00

GENERAL INFORMATION:

Formation: **Johnson**
 Deviated: No Whipstock: ft (KB)
 Time Tool Opened: 21:41:17
 Time Test Ended: 01:35:42
 Interval: **4274.00 ft (KB) To 4305.00 ft (KB) (TVD)**
 Total Depth: 4305.00 ft (KB) (TVD)
 Hole Diameter: 7.88 inches Hole Condition: Good
 Test Type: Conventional Bottom Hole (Reset)
 Tester: Chuck Smith
 Unit No: 62
 Reference Elevations: 2602.00 ft (KB)
 2594.00 ft (CF)
 KB to GR/CF: 8.00 ft

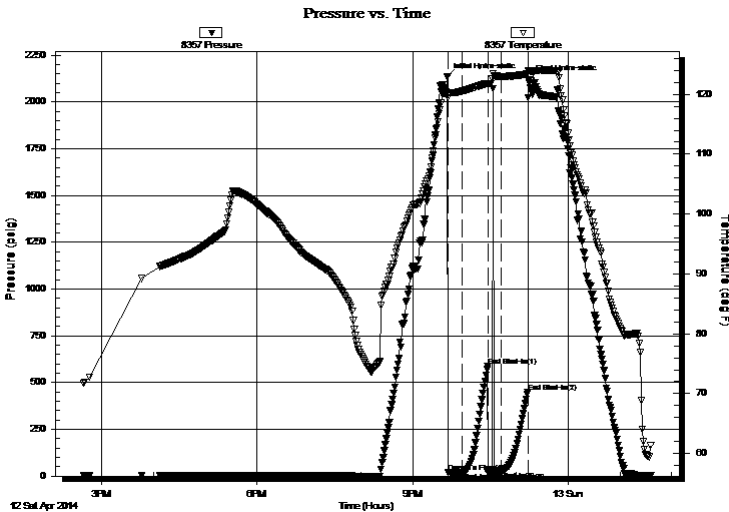
Serial #: 8357

Inside

Press@RunDepth: 27.37 psig @ 4278.00 ft (KB) Capacity: 8000.00 psig
 Start Date: 2014.04.12 End Date: 2014.04.13 Last Calib.: 2014.04.13
 Start Time: 14:39:05 End Time: 01:35:41 Time On Btm: 2014.04.12 @ 21:40:00
 Time Off Btm: 2014.04.12 @ 23:14:30

TEST COMMENT: 15- No blow .
 30- No return.
 15- No blow , flushed tool, surge died, no blow .
 30- No return.

PRESSURE SUMMARY



Time (Min.)	Pressure (psig)	Temp (deg F)	Annotation
0	2133.42	120.09	Initial Hydro-static
2	20.25	119.39	Open To Flow (1)
18	20.33	120.55	Shut-In(1)
47	587.96	121.81	End Shut-In(1)
48	20.11	121.61	Open To Flow (2)
63	27.37	122.98	Shut-In(2)
94	449.87	123.40	End Shut-In(2)
95	2117.71	123.88	Final Hydro-static

Recovery

Length (ft)	Description	Volume (bbl)
10.00	M 100m	0.14

* Recovery from multiple tests

Gas Rates

Choke (inches)	Pressure (psig)	Gas Rate (Mcf/d)



**TRILOBITE
TESTING, INC**

DRILL STEM TEST REPORT

K3 Oil & Gas Operating Co.

M. Coberly Partners #36-10

211 Highland Cross Suite 230
Houston, TX 77073

36-15s-29w Gove,KS

Job Ticket: 56268

DST#: 5

ATTN: Pat Deenihan

Test Start: 2014.04.12 @ 14:39:00

GENERAL INFORMATION:

Formation: **Johnson**

Deviated: No Whipstock: ft (KB)

Time Tool Opened: 21:41:17

Time Test Ended: 01:35:42

Test Type: Conventional Bottom Hole (Reset)

Tester: Chuck Smith

Unit No: 62

Interval: 4274.00 ft (KB) To 4305.00 ft (KB) (TVD)

Reference Elevations: 2602.00 ft (KB)

Total Depth: 4305.00 ft (KB) (TVD)

2594.00 ft (CF)

Hole Diameter: 7.88 inches Hole Condition: Good

KB to GR/CF: 8.00 ft

Serial #: 8645 Outside

Press@RunDepth: psig @ 4278.00 ft (KB)

Capacity: 8000.00 psig

Start Date: 2014.04.12

End Date:

2014.04.13

Last Calib.:

2014.04.13

Start Time: 14:40:23

End Time:

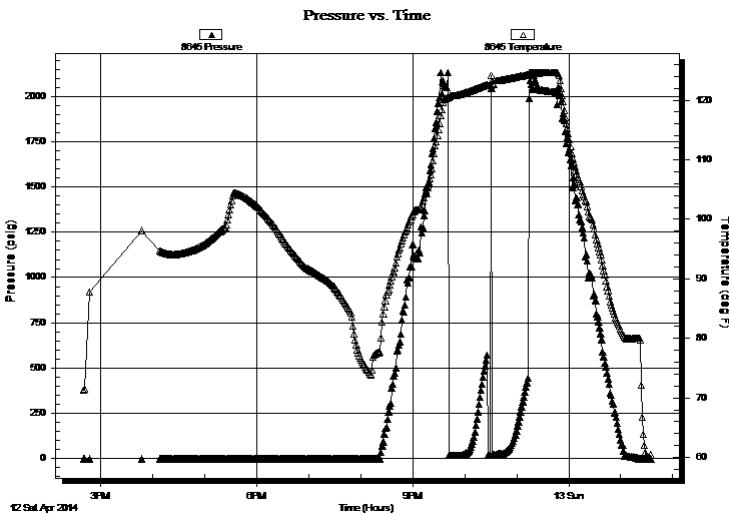
01:34:54

Time On Btm:

Time Off Btm:

TEST COMMENT: 15- No blow .
30- No return.
15- No blow , flushed tool, surge died, no blow .
30- No return.

PRESSURE SUMMARY



Time (Min.)	Pressure (psig)	Temp (deg F)	Annotation

Recovery

Length (ft)	Description	Volume (bbl)
10.00	M 100m	0.14

* Recovery from multiple tests

Gas Rates

Choke (inches)	Pressure (psig)	Gas Rate (Mcf/d)



**TRILOBITE
TESTING, INC**

DRILL STEM TEST REPORT

TOOL DIAGRAM

K3 Oil & Gas Operating Co.

M. Coberly Partners #36-10

211 Highland Cross Suite 230
Houston, TX 77073

36-15s-29w Gove,KS

Job Ticket: 56268

DST#: 5

ATTN: Pat Deenihan

Test Start: 2014.04.12 @ 14:39:00

Tool Information

Drill Pipe:	Length: 4267.00 ft	Diameter: 3.80 inches	Volume: 59.85 bbl	Tool Weight: 2300.00 lb
Heavy Wt. Pipe:	Length: 0.00 ft	Diameter: inches	Volume: 0.00 bbl	Weight set on Packer: 22000.00 lb
Drill Collar:	Length: 0.00 ft	Diameter: 2.25 inches	Volume: 0.00 bbl	Weight to Pull Loose: 70000.00 lb
			<u>Total Volume: 59.85 bbl</u>	Tool Chased 0.00 ft
Drill Pipe Above KB:	20.50 ft			String Weight: Initial 59000.00 lb
Depth to Top Packer:	4274.00 ft			Final 59000.00 lb
Depth to Bottom Packer:	ft			
Interval between Packers:	31.00 ft			
Tool Length:	58.50 ft			
Number of Packers:	2	Diameter: 6.75 inches		

Tool Comments:

Tool Description

Tool Description	Length (ft)	Serial No.	Position	Depth (ft)	Accum. Lengths
Change Over Sub	1.00			4247.50	
Shut In Tool	5.00			4252.50	
Hydraulic tool	5.00			4257.50	
Jars	5.00			4262.50	
Safety Joint	2.50			4265.00	
Packer	5.00			4270.00	27.50 Bottom Of Top Packer
Packer	4.00			4274.00	
Stubb	1.00			4275.00	
Perforations	3.00			4278.00	
Recorder	0.00	8357	Inside	4278.00	
Recorder	0.00	8645	Outside	4278.00	
Perforations	24.00			4302.00	
Bullnose	3.00			4305.00	31.00 Bottom Packers & Anchor

Total Tool Length: 58.50



**TRILOBITE
TESTING, INC**

DRILL STEM TEST REPORT

FLUID SUMMARY

K3 Oil & Gas Operating Co.

M. Coberly Partners #36-10

211 Highland Cross Suite 230
Houston, TX 77073

36-15s-29w Gove,KS

Job Ticket: 56268

DST#: 5

ATTN: Pat Deenihan

Test Start: 2014.04.12 @ 14:39:00

Mud and Cushion Information

Mud Type: Gel Chem

Cushion Type:

Oil API:

deg API

Mud Weight: 9.00 lb/gal

Cushion Length:

ft

Water Salinity:

ppm

Viscosity: 52.00 sec/qt

Cushion Volume:

bbbl

Water Loss: 7.59 in³

Gas Cushion Type:

Resistivity: ohm.m

Gas Cushion Pressure:

psig

Salinity: 3500.00 ppm

Filter Cake: 1.00 inches

Recovery Information

Recovery Table

Length ft	Description	Volume bbl
10.00	M 100m	0.140

Total Length: 10.00 ft Total Volume: 0.140 bbl

Num Fluid Samples: 0

Num Gas Bombs: 0

Serial #:

Laboratory Name:

Laboratory Location:

Recovery Comments:

Serial #: 8357

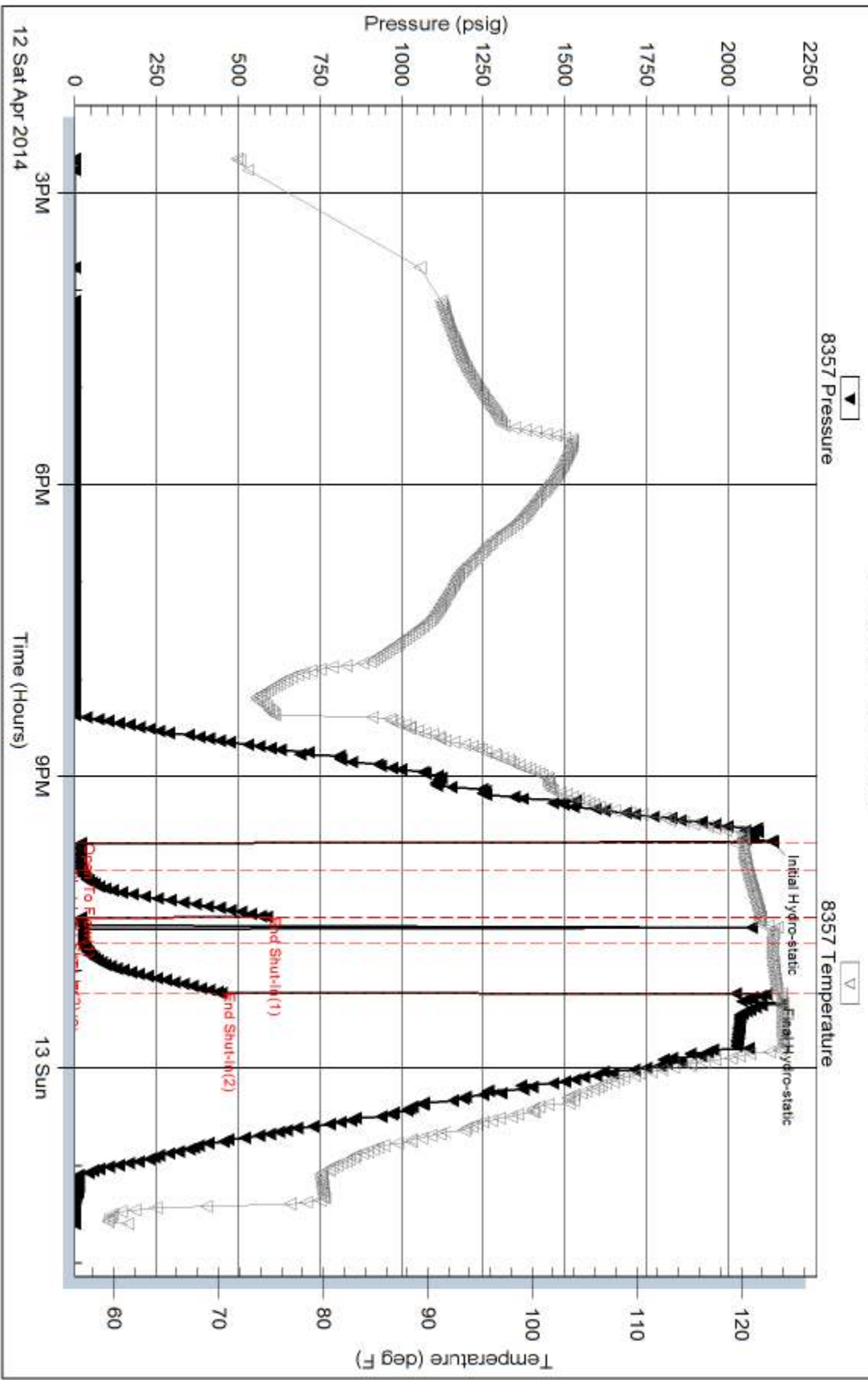
Inside

K3 Oil & Gas Operating Co.

36-15s-29w Gove KS

DST Test Number: 5

Pressure vs. Time



Tribble Testing, Inc

Ref. No: 56268

Printed: 2014.04.14 @ 16:30:59

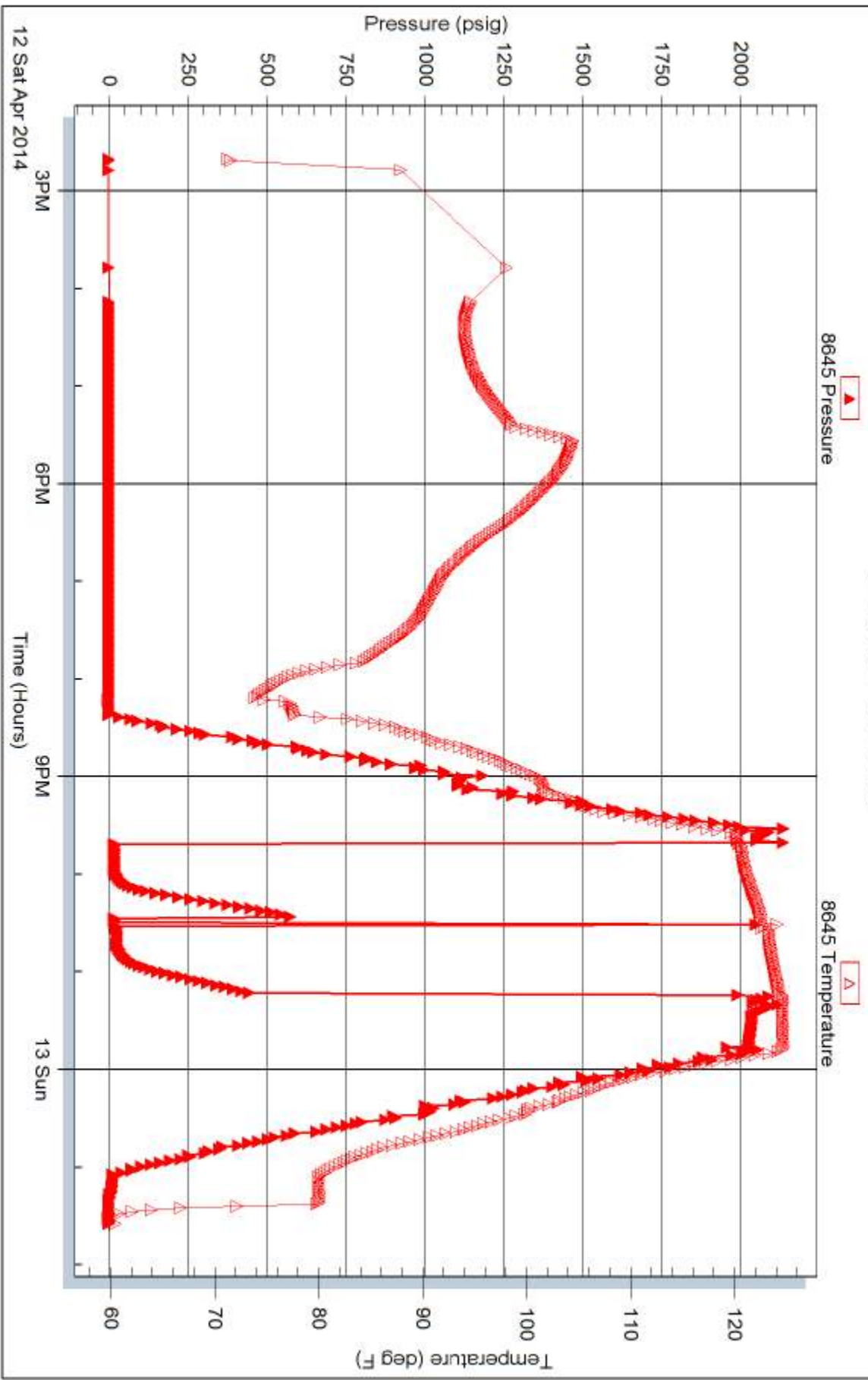
Serial #: 8645

Outside K3 Oil & Gas Operating Co.

36-15s-29w Gove KS

DST Test Number: 5

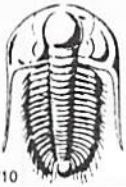
Pressure vs. Time



Trilobite Testing, Inc

Ref. No: 56268

Printed: 2014.04.14 @ 16:30:59



TRILOBITE TESTING INC.

1515 Commerce Parkway • Hays, Kansas 67601

Test Ticket

NO. **56264**

4/10

Well Name & No. M. Coberly Partners #36-10 Test No. 1 Date 4-8-14
 Company K.3 Oil + Gas Operating Co. Elevation 2602 KB 2594 GL
 Address 211 Highland Cross STE 230 Houston, TX 77073
 Co. Rep / Geo. Pat Deenihan Rig Duke #8
 Location: Sec. 36 Twp. 15s Rge. 29w Co. Gove State KS

Interval Tested 3785 - 3821 Zone Tested Lansing 'D-E'
 Anchor Length 36 Drill Pipe Run 3764 Mud Wt. 8.8
 Top Packer Depth 2781 Drill Collars Run 0 Vis 44
 Bottom Packer Depth 3785 Wt. Pipe Run 0 WL 6.4
 Total Depth 3821 Chlorides 1200 ppm System LCM 1#
 Blow Description 1/2" Blow receded to a weak surface blow.
No return.
No blow.
No return.

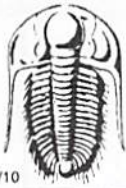
Rec	Feet of	%gas	%oil	%water	%mud
Rec <u>2</u>	Feet of <u>M with a couple oil spots.</u>			<u>100</u>	
Rec	Feet of	%gas	%oil	%water	%mud
Rec	Feet of	%gas	%oil	%water	%mud
Rec	Feet of	%gas	%oil	%water	%mud

Rec Total 2 BHT 107 Gravity — API RW — @ — °F Chlorides — ppm

(A) Initial Hydrostatic <u>1781</u>	<input checked="" type="checkbox"/> Test <u>1150</u>	T-On Location <u>17:15</u>
(B) First Initial Flow <u>20</u>	<input checked="" type="checkbox"/> Jars <u>250</u>	T-Started <u>17:27</u>
(C) First Final Flow <u>20</u>	<input checked="" type="checkbox"/> Safety Joint <u>75</u>	T-Open <u>20:09</u>
(D) Initial Shut-In <u>625</u>	<input checked="" type="checkbox"/> Circ Sub <u>NIC</u>	T-Pulled <u>21:41</u>
(E) Second Initial Flow <u>20</u>	<input type="checkbox"/> Hourly Standby	T-Out <u>23:17</u>
(F) Second Final Flow <u>20</u>	<input checked="" type="checkbox"/> Mileage <u>76RT</u> 117.80	Comments
(G) Final Shut-In <u>458</u>	<input type="checkbox"/> Sampler	
(H) Final Hydrostatic <u>1749</u>	<input type="checkbox"/> Straddle	<input type="checkbox"/> Ruined Shale Packer
Initial Open <u>15</u>	<input checked="" type="checkbox"/> Shale Packer <u>250</u>	<input type="checkbox"/> Ruined Packer
Initial Shut-In <u>30</u>	<input type="checkbox"/> Extra Packer	<input type="checkbox"/> Extra Copies
Final Flow <u>15</u>	<input type="checkbox"/> Extra Recorder	Sub Total <u>0</u>
Final Shut-In <u>30</u>	<input type="checkbox"/> Day Standby	Total <u>1842.80</u>
	<input type="checkbox"/> Accessibility	MP/DST Disc't
	Sub Total <u>1842.80</u>	

Approved By _____ Our Representative Chuck Smith

Trilobite Testing Inc. shall not be liable for damaged of any kind of the property or personnel of the one for whom a test is made, or for any loss suffered or sustained, directly or indirectly, through the use of its equipment, or its statements or opinion concerning the results of any test, tools lost or damaged in the hole shall be paid for at cost by the party for whom the test is made.



TRILOBITE TESTING INC.

1515 Commerce Parkway • Hays, Kansas 67601

Test Ticket

NO. **56265**

4/10

Well Name & No. McCabe Partners 36-10 Test No. 2 Date 4-9-14
 Company K-3 Oil & Gas Operating, Inc. Elevation 2602 KB 2594 GL
 Address 211 Highland Cross STE 230 Houston, TX 77023
 Co. Rep / Geo. Pat Deenihan Rig Duke #8
 Location: Sec. 36 Twp. 15s Rge. 29w Co. Gove State KS

Interval Tested 3961-3988 Zone Tested Lansing J
 Anchor Length 27 Drill Pipe Run 2 3955 Mud Wt. 9.1
 Top Packer Depth 3957 Drill Collars Run 0 Vis 53
 Bottom Packer Depth 3961 Wt. Pipe Run 0 WL 7.2
 Total Depth 3988 Chlorides 2000 ppm System LCM 1"
 Blow Description 6" Blow.
No return.
B.O.B. @ 48 min
No return.

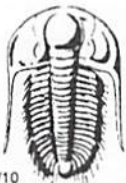
Rec	Feet of	%gas	%oil	%water	%mud
<u>45</u>	<u>OCM</u>	<u>40</u>		<u>60</u>	
<u>63</u>	<u>GOCWM</u>	<u>10</u>	<u>10</u>	<u>10</u>	<u>70</u>
<u>62</u>	<u>OSWM</u>			<u>30</u>	<u>70</u>
	<u>10' GIP</u>	<u>100</u>			

Rec Total 170 BHT 123 Gravity - API RW .220 @ 60 °F Chlorides 38000 ppm

(A) Initial Hydrostatic 1917 Test 1150 T-On Location 15:00
 (B) First Initial Flow 27 Jars T-Started 15:03
 (C) First Final Flow 43 Safety Joint T-Open 16:35
 (D) Initial Shut-In 790 Circ Sub NIC T-Pulled 19:22
 (E) Second Initial Flow 47 Hourly Standby T-Out 20:59
 (F) Second Final Flow 94 Mileage 76RT 117.80 Comments _____
 (G) Final Shut-In 766 Sampler _____
 (H) Final Hydrostatic 1898 Straddle _____ Ruined Shale Packer _____
 Shale Packer 250 Ruined Packer _____
 Extra Packer _____ Extra Copies _____
 Initial Open 15 Extra Recorder _____ Sub Total 0
 Initial Shut-In 30 Day Standby _____ Total 1517.80
 Final Flow 60 Accessibility _____ MP/DST Disc't _____
 Final Shut-In 60 Sub Total 1517.80

Approved By Patricia Deenihan Our Representative Chuck Smith

Trilobite Testing Inc. shall not be liable for damaged of any kind of the property or personnel of the one for whom a test is made, or for any loss suffered or sustained, directly or indirectly, through the use of its equipment, or its statements or opinion concerning the results of any test, tools lost or damaged in the hole shall be paid for at cost by the party for whom the test is made.



TRILOBITE TESTING INC.

1515 Commerce Parkway • Hays, Kansas 67601

Test Ticket

NO. 56266

Well Name & No. M. Coberly Partners 36-10 Test No. 3 Date 4-10-14
 Company K-3 Oil + Gas Operating, Inc. Elevation 2602 KB 2594 GL
 Address 211 Highland Cross STE 230 Houston, TX 77073
 Co. Rep / Geo. Pat Deenihan Rig Duke #8
 Location: Sec. 36 Twp. 15s Rge. 29w Co. Gove State KS

Interval Tested 4027-4052 Zone Tested L'
 Anchor Length 2.5 Drill Pipe Run 4018 Mud Wt. 9.2
 Top Packer Depth 4023 Drill Collars Run 0 Vis 53
 Bottom Packer Depth 4027 Wt. Pipe Run 0 WL 6.4
 Total Depth 4052 Chlorides 2400 ppm System LCM 1"

Blow Description B.O.B. @ 4 min.
Weak surface return.
B.O.B. @ 7 min.
Weak surface return.

Rec	Feet of	%gas	%oil	%water	%mud
<u>45</u>	<u>GOCWM</u>	<u>5</u>	<u>5</u>	<u>10</u>	<u>80</u>
<u>62</u>	<u>GOCMW</u>	<u>5</u>	<u>5</u>	<u>50</u>	<u>40</u>
<u>248</u>	<u>OSMW</u>			<u>85</u>	<u>15</u>
<u>186</u>	<u>OSMW</u>			<u>95</u>	<u>5</u>
	<u>135' GIP</u>				

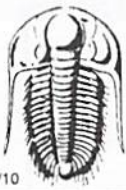
Rec Total 541 BHT 129 Gravity - API RW .113 @ 64 °F Chlorides 74000 ppm

(A) Initial Hydrostatic 1952 Test 1250 T-On Location 7:57
 (B) First Initial Flow 38 Jars _____ T-Started 8:00
 (C) First Final Flow 182 Safety Joint _____ T-Open 10:17
 (D) Initial Shut-In 308 Circ Sub NIC T-Pulled 73:49 12:06
 (E) Second Initial Flow 183 Hourly Standby _____ T-Out 13:49
 (F) Second Final Flow 274 Mileage 76RT 117.80 Comments _____
 (G) Final Shut-In 307 Sampler _____
 (H) Final Hydrostatic 1909 Straddle _____ Ruined Shale Packer _____

Shale Packer 250 Ruined Packer _____
 Extra Packer _____ Extra Copies _____
 Initial Open 15 Extra Recorder _____ Sub Total 0
 Initial Shut-In 30 Day Standby _____ Total 1617.80
 Final Flow 15 Accessibility _____ MP/DST Disc't _____
 Final Shut-In 45 Sub Total 1617.80

Approved By Pat Deenihan Our Representative Chuck Smith

Trilobite Testing Inc. shall not be liable for damaged of any kind of the property or personnel of the one for whom a test is made, or for any loss suffered or sustained, directly or indirectly, through the use of its equipment, or its statements or opinion concerning the results of any test, tools lost or damaged in the hole shall be paid for at cost by the party for whom the test is made.



TRILOBITE TESTING INC.

1515 Commerce Parkway • Hays, Kansas 67601

Test Ticket

NO. 56267

Well Name & No. M. Coberly Partners 36-10 Test No. 4 Date 4-11-14
 Company K-3 Oil + Gas Operating, Inc. Elevation 2602 KB 2594 GL
 Address 211 Highland Cross STE 230 Houston, TX 77073
 Co. Rep / Geo. Pat Deemihan Rig Duke #8
 Location: Sec. 36 Twp. 15s Rge. 29w Co. Gove State Ks

Interval Tested 4174-4280 Zone Tested Pawnee - Ft. Scott
 Anchor Length 106 Drill Pipe Run 4173 Mud Wt. 9.2
 Top Packer Depth 4170 Drill Collars Run 0 Vis 54
 Bottom Packer Depth 4174 Wt. Pipe Run 0 WL 6.4
 Total Depth 4280 Chlorides 2800 ppm System LCM 1"

Blow Description B.O.B. @ 11 min
1 1/2" Return
B.O.B. @ 7 min.
B.O.B. @ 16 min.

Rec	Feet of	%gas	%oil	%water	%mud
62	CGO	30	70		
62	GMCO	20	40		40
186	GWOCM	25	5	5	65
248	OSMW			80	20
	1740' weak GIP				

Rec Total 558 BHT 132 Gravity 35 API RW .150 @ 52 °F Chlorides 76000 ppm

(A) Initial Hydrostatic 2079 Test 1250 T-On Location 20:15
 (B) First Initial Flow 43 Jars 250 T-Started 20:19
 (C) First Final Flow 101 Safety Joint 75 T-Open 22:09
 (D) Initial Shut-In 1092 Circ Sub N/C T-Pulled 00:55
 (E) Second Initial Flow 107 Hourly Standby _____ T-Out 4:10
 (F) Second Final Flow 265 Mileage 117.80 Comments _____
 (G) Final Shut-In 990 Sampler _____
 (H) Final Hydrostatic 2010 Straddle _____ Ruined Shale Packer _____
 Shale Packer 250 Ruined Packer _____

Initial Open 15 Extra Packer _____ Extra Copies _____
 Initial Shut-In 32 Extra Recorder _____ Sub Total 216.67
 Final Flow 60 Day Standby 1d 6.5h Total 2159.47
 Final Shut-In 60 Accessibility _____ MP/DST Disc't _____
 Sub Total 1942.80

Approved By Patrick Deemihan Our Representative Chuck Amick

Trilobite Testing Inc. shall not be liable for damaged or any kind of the property or personnel of the one for whom a test is made, or for any loss suffered or sustained, directly or indirectly, through the use of its equipment, or its statements or opinion concerning the results of any test, tools lost or damaged in the hole shall be paid for at cost by the party for whom the test is made.



TRILOBITE TESTING INC.

1515 Commerce Parkway • Hays, Kansas 67601

Test Ticket

NO. 56268

Well Name & No. M. Coberly Partners #36-10 Test No. 5 Date 4-12-14
 Company K-3 Oil + Gas Operating, Inc. Elevation 2602 KB 2594 GL
 Address 211 Highland Cross STE 230 Houston, TX 77073
 Co. Rep / Geo. Pat Deenihan Rig Duke #8
 Location: Sec. 36 Twp. 15s Rge. 29w Co. Gove State Ks

Interval Tested 4274-4305 Zone Tested Johnson
 Anchor Length 31 Drill Pipe Run 4267 Mud Wt. 9.2
 Top Packer Depth 4270 Drill Collars Run 0 Vis 52
 Bottom Packer Depth 4274 Wt. Pipe Run 0 WL 7.6
 Total Depth 4305 Chlorides 3500 ppm System LCM 1"

Blow Description No blow.
No return.
No blow, flushed tool, surge died, no blows.
No return.

Rec	Feet of	%gas	%oil	%water	%mud
Rec <u>10</u>	Feet of <u>M</u>				<u>100</u>
Rec	Feet of				
Rec	Feet of				
Rec	Feet of				

Rec Total 10 BHT 123 Gravity — API RW — @ — °F Chlorides — ppm

(A) Initial Hydrostatic 2133 Test 1250 T-On Location 14:37
 (B) First Initial Flow 20 Jars 250 T-Started 14:39
 (C) First Final Flow 20 Safety Joint 75 T-Open 21:41
 (D) Initial Shut-In 588 Circ Sub N/C T-Pulled 23:13
 (E) Second Initial Flow 20 Hourly Standby 100 T-Out 1:36
 (F) Second Final Flow 27 Mileage 76 x 2 235.60 Comments Rig re-lined bores
 (G) Final Shut-In 450 Sampler — after coming out with bit.
 (H) Final Hydrostatic 2118 Straddle — Picked up tools 4-13 6:00pm
 Ruined Shale Packer —
 Shale Packer 250 Ruined Packer —
 Extra Packer — Extra Copies —
 Initial Open 15 Extra Recorder — Sub Total 0
 Initial Shut-In 30 Day Standby — Total 2160.60
 Final Flow 15 Accessibility — MP/DST Disc't —
 Final Shut-In 30 Sub Total 2160.60

Approved By [Signature] Our Representative Chuck Amick

Trilobite Testing Inc. shall not be liable for damaged of any kind of the property or personnel of the one for whom a test is made, or for any loss suffered or sustained, directly or indirectly, through the use of its equipment, or its statements or opinion concerning the results of any test, tools lost or damaged in the hole shall be paid for at cost by the party for whom the test is made.