



TRILOBITE TESTING, INC.

DRILL STEM TEST REPORT

Edison Operating Co.
8100 E.22ND St. N. Bldg.1900
Wichita Ks.67226
ATTN: Adam Nighswonger

19-34s-31w Seward Ks
Eva Jean #1-19
Job Ticket: 56503 **DST#: 2**
Test Start: 2014.03.19 @ 18:10:00

GENERAL INFORMATION:

Formation: **Marmaton**
Deviated: No Whipstock: ft (KB)
Time Tool Opened: 21:43:00
Time Test Ended: 04:31:00
Interval: **5136.00 ft (KB) To 5220.00 ft (KB) (TVD)**
Total Depth: 5220.00 ft (KB) (TVD)
Hole Diameter: 7.88 inches Hole Condition: Fair
Test Type: Conventional Bottom Hole (Reset)
Tester: Cornelio Landa III
Unit No: 60
Reference Elevations: 2730.00 ft (KB)
2720.00 ft (CF)
KB to GR/CF: 10.00 ft

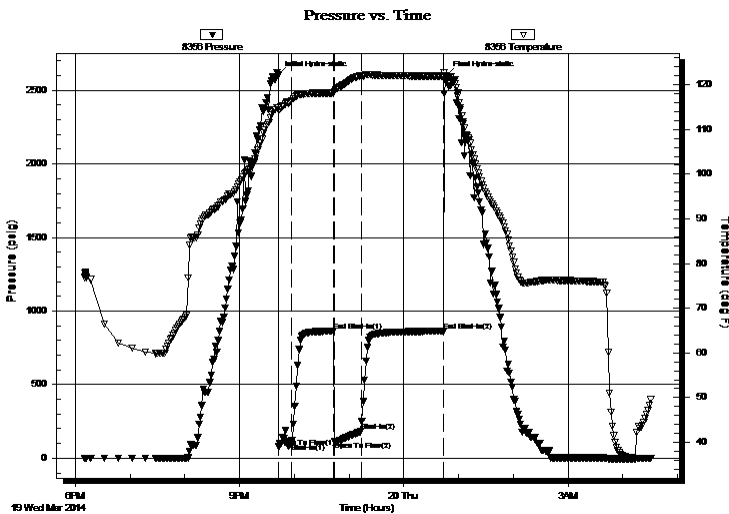
Serial #: 8356

Inside

Press @ Run Depth: 181.58 psig @ 5140.00 ft (KB) Capacity: 8000.00 psig
Start Date: 2014.03.19 End Date: 2014.03.20 Last Calib.: 2014.03.20
Start Time: 18:10:05 End Time: 04:31:00 Time On Btm: 2014.03.19 @ 21:42:30
Time Off Btm: 2014.03.20 @ 00:46:30

TEST COMMENT:

IF: B.o.b. in 2 min.
IS: Bled off in 5 min.- No return
FF: B.o.b. in 30 seconds-GTS @ 20 min. into open-Too small to measure
FS: Bled off in 7 min.-Surface blow back-Built to B.o.b. in 9 min.- 16 min. total into shut-in-Blow back died back a 1/2 in.



PRESSURE SUMMARY

| Time (Min.) | Pressure (psig) | Temp (deg F) | Annotation |
|-------------|-----------------|--------------|----------------------|
| 0 | 2603.35 | 114.81 | Initial Hydro-static |
| 1 | 76.70 | 114.29 | Open To Flow (1) |
| 15 | 99.52 | 116.46 | Shut-In(1) |
| 61 | 863.81 | 118.15 | End Shut-In(1) |
| 62 | 111.69 | 118.42 | Open To Flow (2) |
| 91 | 181.58 | 122.12 | Shut-In(2) |
| 181 | 861.43 | 121.91 | End Shut-In(2) |
| 184 | 2598.36 | 121.60 | Final Hydro-static |

Recovery

| Length (ft) | Description | Volume (bbl) |
|-------------|---------------------|--------------|
| 126.00 | Mcgw 10m 40g 50w | 1.77 |
| 63.00 | Wcm & G 15w 15m 70g | 0.88 |
| 126.00 | Mcg 30m 70g | 1.77 |
| 35.00 | Gm 5g 95m | 0.49 |
| 0.00 | Gas to surface | 0.00 |

Gas Rates

| Choke (inches) | Pressure (psig) | Gas Rate (Mcf/d) |
|----------------|-----------------|------------------|
| | | |

* Recovery from multiple tests



**TRILOBITE
TESTING, INC.**

DRILL STEM TEST REPORT

FLUID SUMMARY

Edison Operating Co.

19-34s-31w Seward Ks

8100 E.22ND St. N. Bldg.1900
Wichita Ks.67226

Eva Jean #1-19

Job Ticket: 56503

DST#: 2

ATTN: Adam Nighswonger

Test Start: 2014.03.19 @ 18:10:00

Mud and Cushion Information

Mud Type: Gel Chem

Cushion Type:

Oil API:

deg API

Mud Weight: 9.00 lb/gal

Cushion Length:

ft

Water Salinity:

46000 ppm

Viscosity: 44.00 sec/qt

Cushion Volume:

bbbl

Water Loss: 6.20 in³

Gas Cushion Type:

Resistivity: 0.00 ohm.m

Gas Cushion Pressure:

psig

Salinity: 4500.00 ppm

Filter Cake: 2.00 inches

Recovery Information

Recovery Table

| Length ft | Description | Volume bbbl |
|--------------|---------------------|----------------|
| 126.00 | Mcgw 10m 40g 50w | 1.767 |
| 63.00 | Wcm & G 15w 15m 70g | 0.884 |
| 126.00 | Mcg 30m 70g | 1.767 |
| 35.00 | Gm 5g 95m | 0.491 |
| 0.00 | Gas to surface | 0.000 |

Total Length: 350.00 ft Total Volume: 4.909 bbl

Num Fluid Samples: 0

Num Gas Bombs: 0

Serial #:

Laboratory Name:

Laboratory Location:

Recovery Comments: rw .26@41.5=46000

Pressure vs. Time

