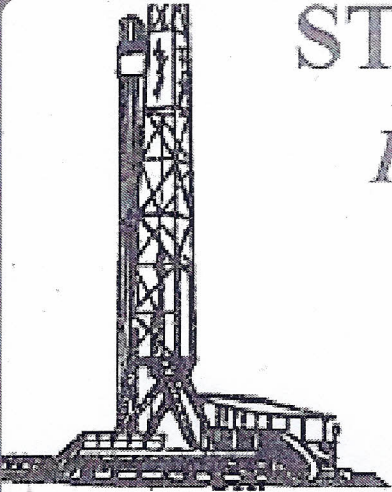


STEVEN P. MURPHY, P.G.

Petroleum Geologist (KS #228)



RR#1, Box 69

Otis, Kansas 67565

geomurphy@gbta.net

Cell 620.639.3030

Fax 785.387.2400

Scale 1:240 (5"=100') Imperial
Measured Depth Log

Well Name: Sander #1 API # 15-167-23933-0000
Location: Russell County
License Number: 15-167-23933-00-00 Region: Kansas
Spud Date: 2/11/14 Drilling Completed: 2/18/14
Surface Coordinates: 2310' FSL & 1450' FWL (W/2 NW NE SW)
Section 33-T13S-R15W
Bottom Hole Coordinates: Same as above, vertical well with minimal deviation
Ground Elevation (ft): 1886' K.B. Elevation (ft): 1895'
Logged Interval (ft): 2700 To: TD Total Depth (ft): LTD - 3390/RTD - 3389'
Formation: Topeka through Precambrian
Type of Drilling Fluid: Chemical (Mudco - Gary Schmidtberger)

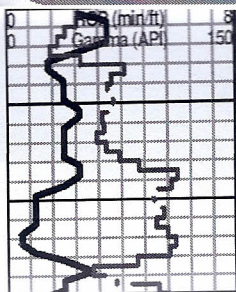
Printed by STRIP.LOG from WellSight Systems 1-800-447-1534 www.WellSight.com

OPERATOR

Company: Jeff Crawford dba Lonestar Oil Co.
Address: P.O. Box 417
Victoria, KS 67671-0417

GEOLOGIST

Name: Steven P. Murphy, PG
Company: Consulting Petroleum Geologist
Address: 3365 CR 390
Otis, KS 67565



Southwind Rig #2 MIRU 2/11/14

8 5/8" Surface casing set @ 938'
Survey @ 938' - 1 degree

The following sample descriptions
were lagged to depth:

Anhydrite Top - 933 (+962)