

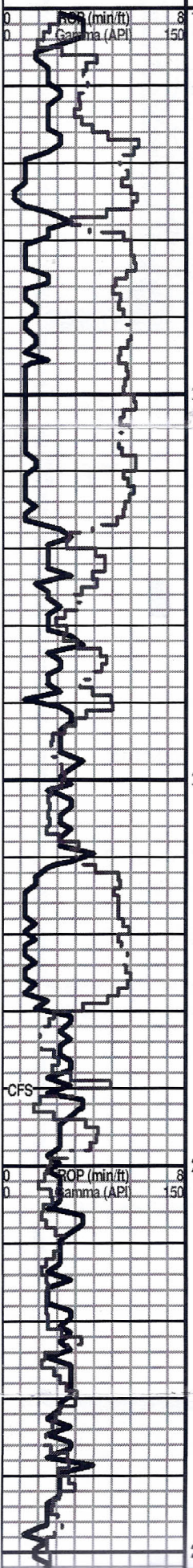
Curve Track 1
 ROP (min/ft) ———
 Gamma (API) ———

P. 3

Geological Descriptions

REMARKS

Depth
 Lithology
 Oil Shows



Southwind Rig #2 MIRU 2/11/14

8 5/8" Surface casing set @ 938'
 Survey @ 938' - 1 degree

The following sample descriptions
 were lagged to depth:

Anhydrite Top - 933 (+962)

Mud displaced @ 2304'

SH: dk gry w/tr fgr mic sst

HOWARD 2717 (-822)

LS: crm-tan, vfxln, dense, NS

LS: as above

LS: as above

SH: gry-blk

TOPEKA 2780 (-885)

LS: crm-gry, fxlIn, mostly dense, sl foss, sl
 chalky, nsfo or stn, fr odor (sulfurous)

LS: tan-gry, fxlIn, foss, mostly dense, NS

LS: as above

LS: crm-tan-gry, vfxln, sl foss, dense, cherty,
 NS

LS: as above

LS: crm-tan, fxlIn, dense, chalky, NS