



DRILL STEM TEST REPORT

Prepared For: **Ring Energy Inc.**

PO. Box 11350
Midland, TX 79702

ATTN: Austin Garner

Faris Trust 35 #1

35-26s-31w Finney,KS

Start Date: 2014.02.21 @ 05:18:00

End Date: 2014.02.21 @ 15:34:45

Job Ticket #: 55714 DST #: 1

Trilobite Testing, Inc
PO Box 362 Hays, KS 67601
ph: 785-625-4778 fax: 785-625-5620

Printed: 2014.02.25 @ 16:32:42



**TRILOBITE
TESTING, INC**

DRILL STEM TEST REPORT

Ring Energy Inc.

35-26s-31w Finney,KS

PO. Box 11350
Midland, TX 79702

Faris Trust 35 #1

Job Ticket: 55714

DST#: 1

ATTN: Austin Garner

Test Start: 2014.02.21 @ 05:18:00

GENERAL INFORMATION:

Formation: **Morrow**

Deviated: No Whipstock: ft (KB)

Time Tool Opened: 08:46:15

Time Test Ended: 15:34:45

Test Type: Conventional Bottom Hole (Initial)

Tester: Cornelio Landa III

Unit No: 69

Interval: 4976.00 ft (KB) To 5048.00 ft (KB) (TVD)

Reference Elevations: 2849.00 ft (KB)

Total Depth: 5048.00 ft (KB) (TVD)

2839.00 ft (CF)

Hole Diameter: 7.88 inches Hole Condition: Fair

KB to GR/CF: 10.00 ft

Serial #: 8678

Inside

Press@RunDepth: 50.54 psig @ 4978.00 ft (KB)

Capacity: 8000.00 psig

Start Date: 2014.02.21

End Date: 2014.02.21

Last Calib.: 2014.02.21

Start Time: 05:18:05

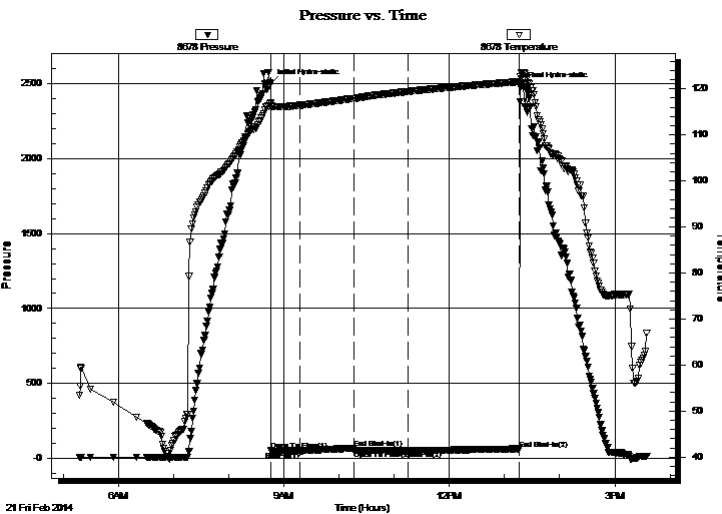
End Time: 15:34:45

Time On Btm: 2014.02.21 @ 08:45:45

Time Off Btm: 2014.02.21 @ 13:16:45

TEST COMMENT: IF: Surface blow -Built to 1/2 in.-Died back to surface blow
IS: No return
FF: Surface blow after 10 min.-Died in 35-Died 45 min. into open
FS: No return

PRESSURE SUMMARY



Time (Min.)	Pressure (psig)	Temp (deg F)	Annotation
0	2500.62	116.95	Initial Hydro-static
1	50.60	116.22	Open To Flow (1)
32	50.01	116.43	Shut-In(1)
91	67.75	117.93	End Shut-In(1)
91	51.38	117.92	Open To Flow (2)
150	50.54	119.44	Shut-In(2)
270	62.65	121.58	End Shut-In(2)
271	2479.37	122.67	Final Hydro-static

Recovery

Length (ft)	Description	Volume (bbl)
10.00	Mud w/Traces of oil	0.14

Gas Rates

Choke (inches)	Pressure (psig)	Gas Rate (Mcf/d)



TRILOBITE TESTING, INC.

DRILL STEM TEST REPORT

Ring Energy Inc.
 P.O. Box 11350
 Midland, TX 79702
 ATTN: Austin Garner

35-26s-31w Finney, KS
Faris Trust 35 #1
 Job Ticket: 55714 **DST#: 1**
 Test Start: 2014.02.21 @ 05:18:00

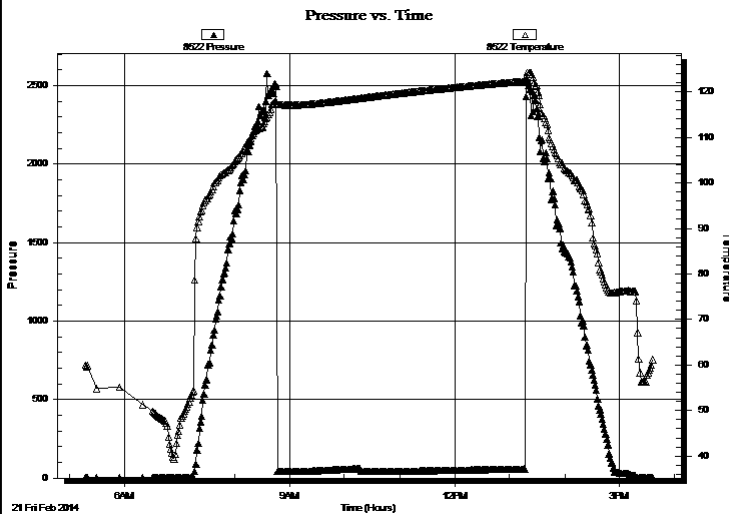
GENERAL INFORMATION:

Formation: **Morrow**
 Deviated: No Whipstock: ft (KB) Test Type: Conventional Bottom Hole (Initial)
 Time Tool Opened: 08:46:15 Tester: Cornelio Landa III
 Time Test Ended: 15:34:45 Unit No: 69
 Interval: **4976.00 ft (KB) To 5048.00 ft (KB) (TVD)** Reference Elevations: 2849.00 ft (KB)
 Total Depth: 5048.00 ft (KB) (TVD) 2839.00 ft (CF)
 Hole Diameter: 7.88 inches Hole Condition: Fair KB to GR/CF: 10.00 ft

Serial #: 8522 Outside

Press@RunDepth: psig @ 4978.00 ft (KB) Capacity: 8000.00 psig
 Start Date: 2014.02.21 End Date: 2014.02.21 Last Calib.: 2014.02.21
 Start Time: 05:18:05 End Time: 15:36:30 Time On Btm:
 Time Off Btm:

TEST COMMENT: IF: Surface blow -Built to 1/2 in.-Died back to surface blow
 IS: No return
 FF: Surface blow after 10 min.-Died in 35-Died 45 min. into open
 FS: No return



PRESSURE SUMMARY

Time (Min.)	Pressure (psig)	Temp (deg F)	Annotation

Recovery

Length (ft)	Description	Volume (bbl)
10.00	Mud w/Traces of oil	0.14

Gas Rates

Choke (inches)	Pressure (psig)	Gas Rate (Mcf/d)



**TRILOBITE
TESTING, INC**

DRILL STEM TEST REPORT

TOOL DIAGRAM

Ring Energy Inc.

35-26s-31w Finney,KS

PO. Box 11350
Midland, TX 79702

Faris Trust 35 #1

Job Ticket: 55714

DST#: 1

ATTN: Austin Garner

Test Start: 2014.02.21 @ 05:18:00

Tool Information

Drill Pipe:	Length: 4972.00 ft	Diameter: 3.80 inches	Volume: 69.74 bbl	Tool Weight: 2500.00 lb
Heavy Wt. Pipe:	Length: 0.00 ft	Diameter: 0.00 inches	Volume: 0.00 bbl	Weight set on Packer: 20000.00 lb
Drill Collar:	Length: 0.00 ft	Diameter: 2.25 inches	Volume: 0.00 bbl	Weight to Pull Loose: 10000.00 lb
			<u>Total Volume: 69.74 bbl</u>	Tool Chased 0.00 ft
Drill Pipe Above KB:	23.00 ft			String Weight: Initial 82000.00 lb
Depth to Top Packer:	4976.00 ft			Final 82000.00 lb
Depth to Bottom Packer:	ft			
Interval between Packers:	72.00 ft			
Tool Length:	99.00 ft			
Number of Packers:	2	Diameter: 6.75 inches		

Tool Comments:

Tool Description

Tool Description	Length (ft)	Serial No.	Position	Depth (ft)	Accum. Lengths
Change Over Sub	1.00			4950.00	
Shut In Tool	5.00			4955.00	
Hydraulic tool	5.00			4960.00	
Jars	5.00			4965.00	
Safety Joint	2.00			4967.00	
Packer	5.00			4972.00	27.00 Bottom Of Top Packer
Packer	4.00			4976.00	
Stubb	1.00			4977.00	
Perforations	1.00			4978.00	
Recorder	0.00	8678	Inside	4978.00	
Recorder	0.00	8522	Outside	4978.00	
Perforations	1.00			4979.00	
Drill Pipe	31.00			5010.00	
Change Over Sub	1.00			5011.00	
Perforations	34.00			5045.00	
Bullnose	3.00			5048.00	72.00 Bottom Packers & Anchor
Total Tool Length:	99.00				



**TRILOBITE
TESTING, INC**

DRILL STEM TEST REPORT

FLUID SUMMARY

Ring Energy Inc.

35-26s-31w Finney,KS

PO. Box 11350
Midland, TX 79702

Faris Trust 35 #1

Job Ticket: 55714

DST#: 1

ATTN: Austin Garner

Test Start: 2014.02.21 @ 05:18:00

Mud and Cushion Information

Mud Type: Gel Chem

Cushion Type:

Oil API:

deg API

Mud Weight: 9.00 lb/gal

Cushion Length: ft

Water Salinity: ppm

Viscosity: 54.00 sec/qt

Cushion Volume: bbl

Water Loss: 7.94 in³

Gas Cushion Type:

Resistivity: 0.00 ohm.m

Gas Cushion Pressure: psig

Salinity: 2000.00 ppm

Filter Cake: 1.00 inches

Recovery Information

Recovery Table

Length ft	Description	Volume bbl
10.00	Mud w/Traces of oil	0.140

Total Length: 10.00 ft Total Volume: 0.140 bbl

Num Fluid Samples: 0

Num Gas Bombs: 0

Serial #:

Laboratory Name:

Laboratory Location:

Recovery Comments:

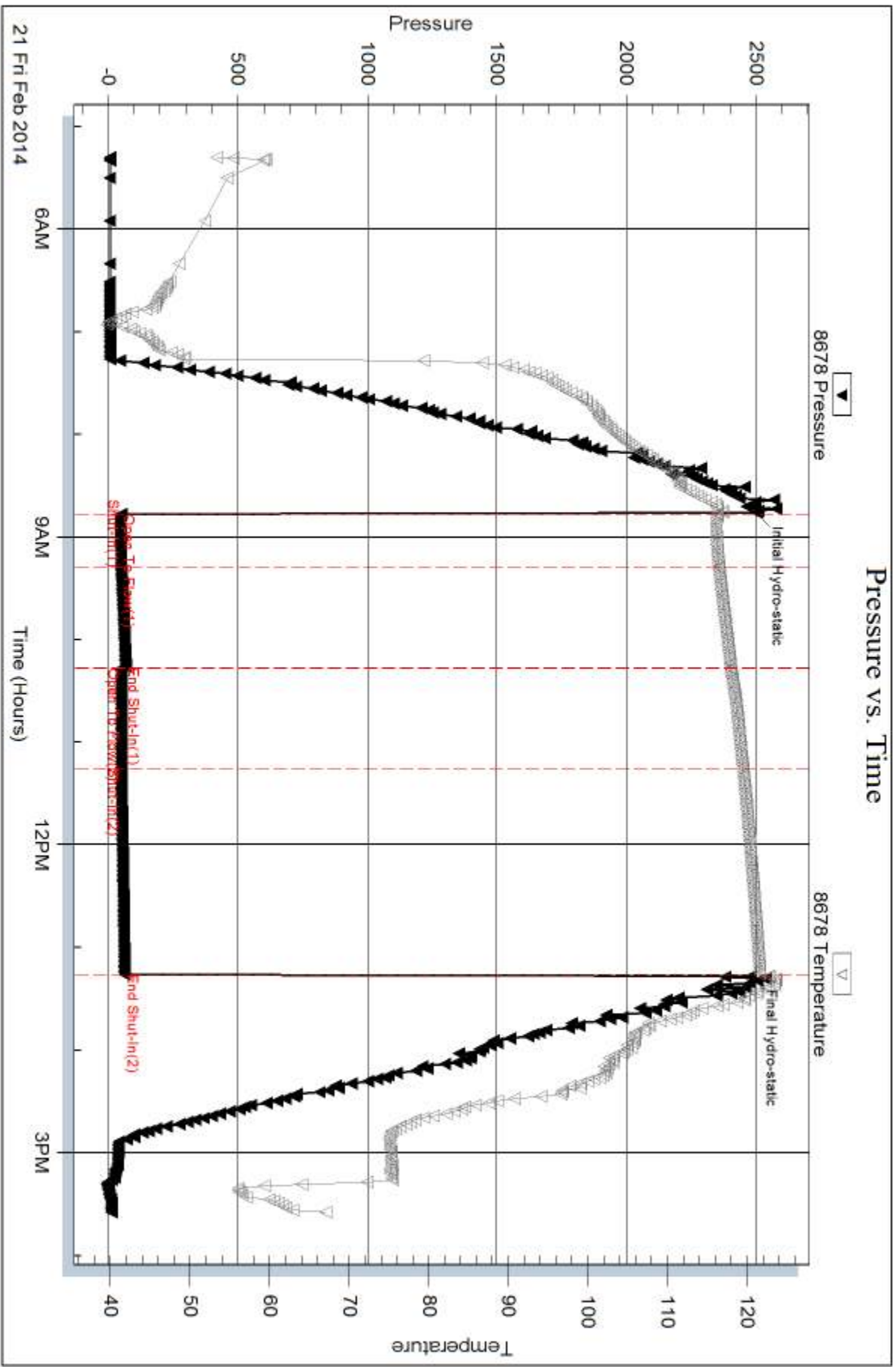
Serial #: 8678

Inside

Ring Energy Inc.

Fair's Trust 35 #1

DST Test Number: 1

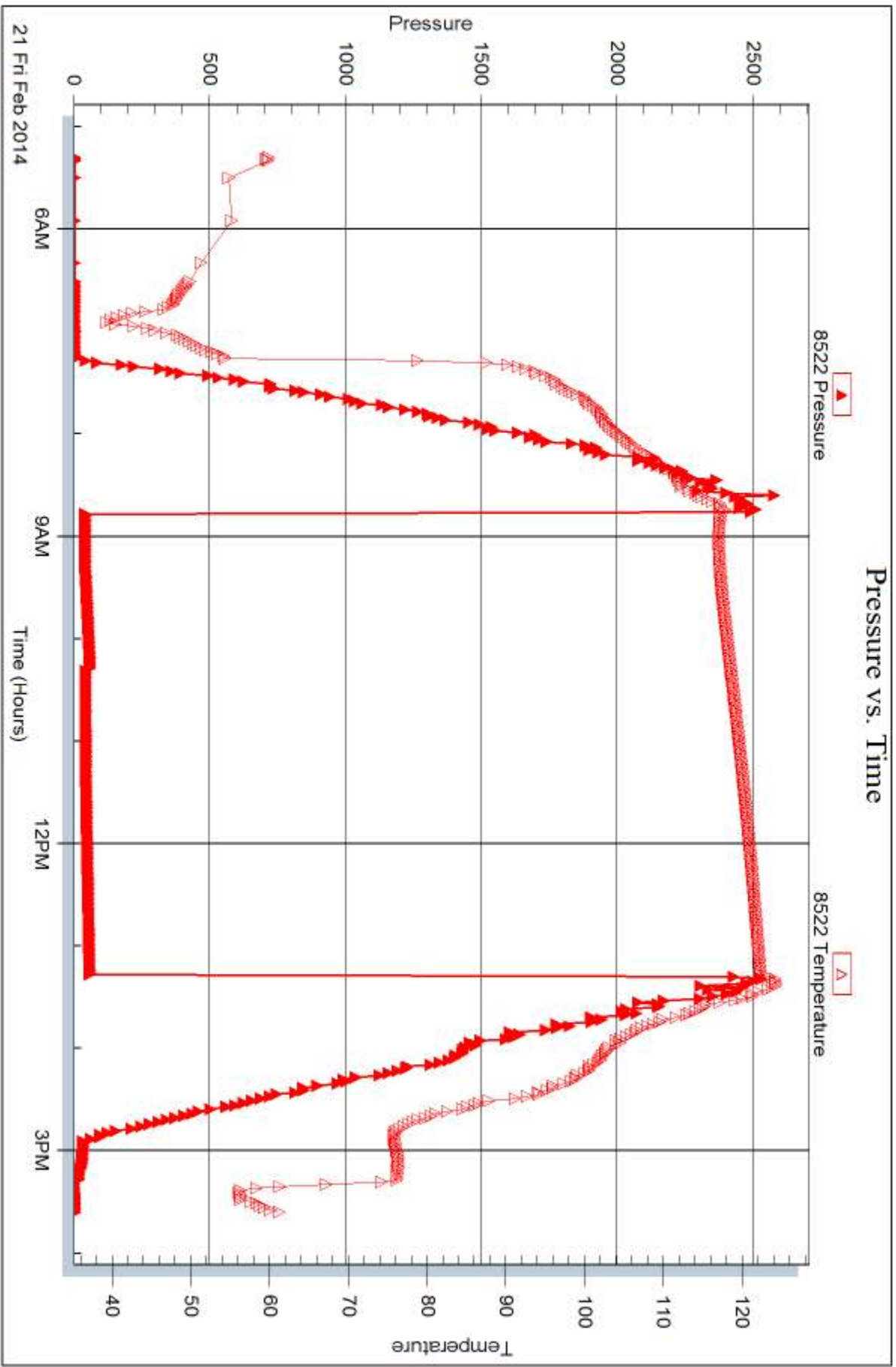


Serial #: 8522

Outside Ring Energy Inc.

Fair's Trust 35 #1

DST Test Number: 1



Triobite Testing, Inc

Ref. No: 55714

Printed: 2014.02.25 @ 16:32:44



DRILL STEM TEST REPORT

Prepared For: **Ring Energy Inc.**

PO. Box 11350
Midland, TX 79702

ATTN: Austin Garner

Faris Trust 35 #1

35-26s-31w Finney,KS

Start Date: 2014.02.22 @ 13:40:00

End Date: 2014.02.22 @ 18:32:15

Job Ticket #: 55715 DST #: 2

Trilobite Testing, Inc

PO Box 362 Hays, KS 67601

ph: 785-625-4778 fax: 785-625-5620

Printed: 2014.02.25 @ 16:32:15



TRILOBITE TESTING, INC

DRILL STEM TEST REPORT

Ring Energy Inc.

35-26s-31w Finney, KS

PO. Box 11350
Midland, TX 79702

Faris Trust 35 #1

Job Ticket: 55715

DST#: 2

ATTN: Austin Garner

Test Start: 2014.02.22 @ 13:40:00

GENERAL INFORMATION:

Formation: **St. Louis C**

Deviated: No Whipstock: ft (KB)

Time Tool Opened:

Time Test Ended: 18:32:15

Test Type: Conventional Bottom Hole (Reset)

Tester: Cornelio Landa III

Unit No: 69

Interval: 5100.00 ft (KB) To 5218.00 ft (KB) (TVD)

Reference Elevations: 2849.00 ft (KB)

Total Depth: 5218.00 ft (KB) (TVD)

2839.00 ft (CF)

Hole Diameter: 7.88 inches Hole Condition: Fair

KB to GR/CF: 10.00 ft

Serial #: 8522 Outside

Press@RunDepth: psig @ 5102.00 ft (KB)

Capacity: 8000.00 psig

Start Date: 2014.02.22

End Date:

2014.02.22

Last Calib.:

2014.02.22

Start Time: 13:40:05

End Time:

18:32:14

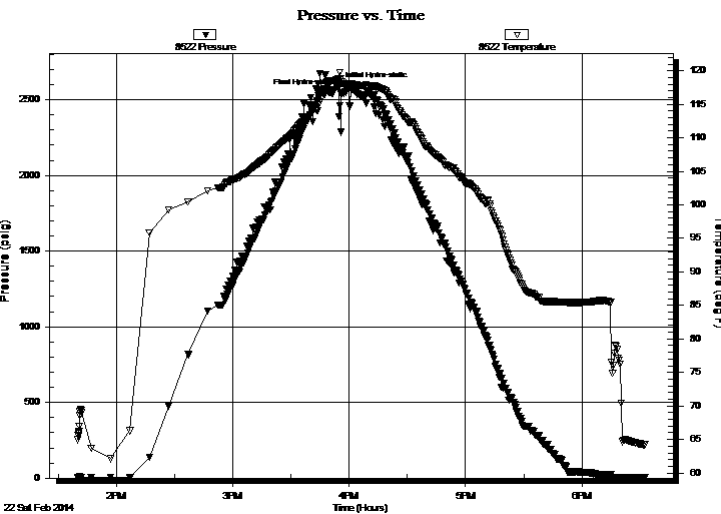
Time On Btm:

2014.02.22 @ 15:54:30

Time Off Btm:

2014.02.22 @ 15:56:00

TEST COMMENT: PACKER FAILURE



PRESSURE SUMMARY

Time (Min.)	Pressure (psig)	Temp (deg F)	Annotation
0	2584.33	118.76	Initial Hydro-static
2	2540.36	118.30	Final Hydro-static

Recovery

Length (ft)	Description	Volume (bbl)
600.00	Mud 100m	8.42

Gas Rates

Choke (inches)	Pressure (psig)	Gas Rate (Mcf/d)

* Recovery from multiple tests



**TRILOBITE
TESTING, INC**

DRILL STEM TEST REPORT

Ring Energy Inc.

35-26s-31w Finney,KS

PO. Box 11350
Midland, TX 79702

Faris Trust 35 #1

ATTN: Austin Garner

Job Ticket: 55715

DST#: 2

Test Start: 2014.02.22 @ 13:40:00

GENERAL INFORMATION:

Formation: **St. Louis C**

Deviated: No Whipstock: ft (KB)

Time Tool Opened:

Time Test Ended: 18:32:15

Interval: 5100.00 ft (KB) To 5218.00 ft (KB) (TVD)

Total Depth: 5218.00 ft (KB) (TVD)

Hole Diameter: 7.88 inches Hole Condition: Fair

Test Type: Conventional Bottom Hole (Reset)

Tester: Cornelio Landa III

Unit No: 69

Reference Elevations: 2849.00 ft (KB)

2839.00 ft (CF)

KB to GR/CF: 10.00 ft

Serial #: 8678

Inside

Press@RunDepth: psig @ 5102.00 ft (KB)

Start Date: 2014.02.22

End Date:

2014.02.22

Start Time: 13:40:05

End Time:

18:31:29

Capacity: 8000.00 psig

Last Calib.:

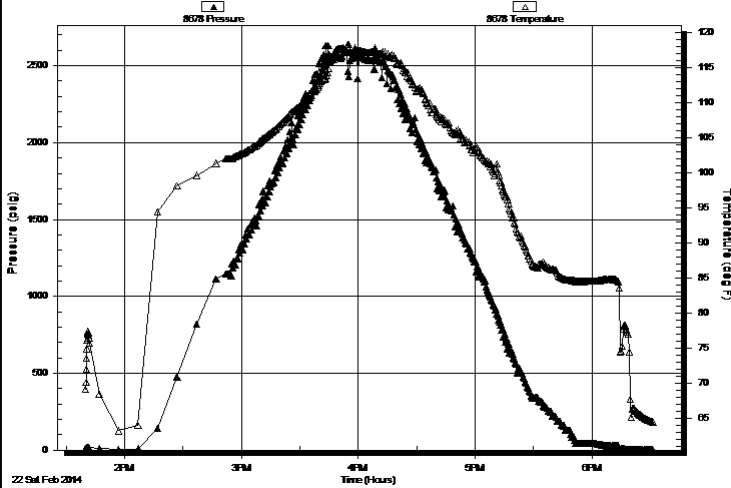
2014.02.22

Time On Btm:

Time Off Btm:

TEST COMMENT: PACKER FAILURE

Pressure vs. Time



PRESSURE SUMMARY

Time (Min.)	Pressure (psig)	Temp (deg F)	Annotation
-------------	-----------------	--------------	------------

Recovery

Length (ft)	Description	Volume (bbl)
600.00	Mud 100m	8.42

Gas Rates

Choke (inches)	Pressure (psig)	Gas Rate (Mcf/d)
----------------	-----------------	------------------

* Recovery from multiple tests



**TRILOBITE
TESTING, INC**

DRILL STEM TEST REPORT

TOOL DIAGRAM

Ring Energy Inc.

35-26s-31w Finney,KS

PO. Box 11350
Midland, TX 79702

Faris Trust 35 #1

Job Ticket: 55715

DST#: 2

ATTN: Austin Garner

Test Start: 2014.02.22 @ 13:40:00

Tool Information

Drill Pipe:	Length: 5099.00 ft	Diameter: 3.80 inches	Volume: 71.53 bbl	Tool Weight:	2500.00 lb
Heavy Wt. Pipe:	Length: 0.00 ft	Diameter: 0.00 inches	Volume: 0.00 bbl	Weight set on Packer:	20000.00 lb
Drill Collar:	Length: 0.00 ft	Diameter: 2.25 inches	Volume: 0.00 bbl	Weight to Pull Loose:	10000.00 lb
			<u>Total Volume: 71.53 bbl</u>	Tool Chased	0.00 ft
Drill Pipe Above KB:	26.00 ft			String Weight: Initial	88000.00 lb
Depth to Top Packer:	5100.00 ft			Final	88000.00 lb
Depth to Bottom Packer:	ft				
Interval between Packers:	118.00 ft				
Tool Length:	145.00 ft				
Number of Packers:	2	Diameter: 6.75 inches			

Tool Comments:

Tool Description

Tool Description	Length (ft)	Serial No.	Position	Depth (ft)	Accum. Lengths
Change Over Sub	1.00			5074.00	
Shut In Tool	5.00			5079.00	
Hydraulic tool	5.00			5084.00	
Jars	5.00			5089.00	
Safety Joint	2.00			5091.00	
Packer	5.00			5096.00	27.00 Bottom Of Top Packer
Packer	4.00			5100.00	
Stubb	1.00			5101.00	
Perforations	1.00			5102.00	
Recorder	0.00	8678	Inside	5102.00	
Recorder	0.00	8522	Outside	5102.00	
Perforations	1.00			5103.00	
Drill Pipe	94.00			5197.00	
Change Over Sub	1.00			5198.00	
Perforations	17.00			5215.00	
Bullnose	3.00			5218.00	118.00 Bottom Packers & Anchor
Total Tool Length:	145.00				



**TRILOBITE
TESTING, INC**

DRILL STEM TEST REPORT

FLUID SUMMARY

Ring Energy Inc.

35-26s-31w Finney,KS

PO. Box 11350
Midland, TX 79702

Faris Trust 35 #1

Job Ticket: 55715

DST#: 2

ATTN: Austin Garner

Test Start: 2014.02.22 @ 13:40:00

Mud and Cushion Information

Mud Type: Gel Chem

Cushion Type:

Oil API:

deg API

Mud Weight: 9.00 lb/gal

Cushion Length:

ft

Water Salinity:

ppm

Viscosity: 48.00 sec/qt

Cushion Volume:

bbbl

Water Loss: 8.74 in³

Gas Cushion Type:

Resistivity: 0.00 ohm.m

Gas Cushion Pressure:

psig

Salinity: 2000.00 ppm

Filter Cake: 1.00 inches

Recovery Information

Recovery Table

Length ft	Description	Volume bbl
600.00	Mud 100m	8.416

Total Length: 600.00 ft Total Volume: 8.416 bbl

Num Fluid Samples: 0

Num Gas Bombs: 0

Serial #:

Laboratory Name:

Laboratory Location:

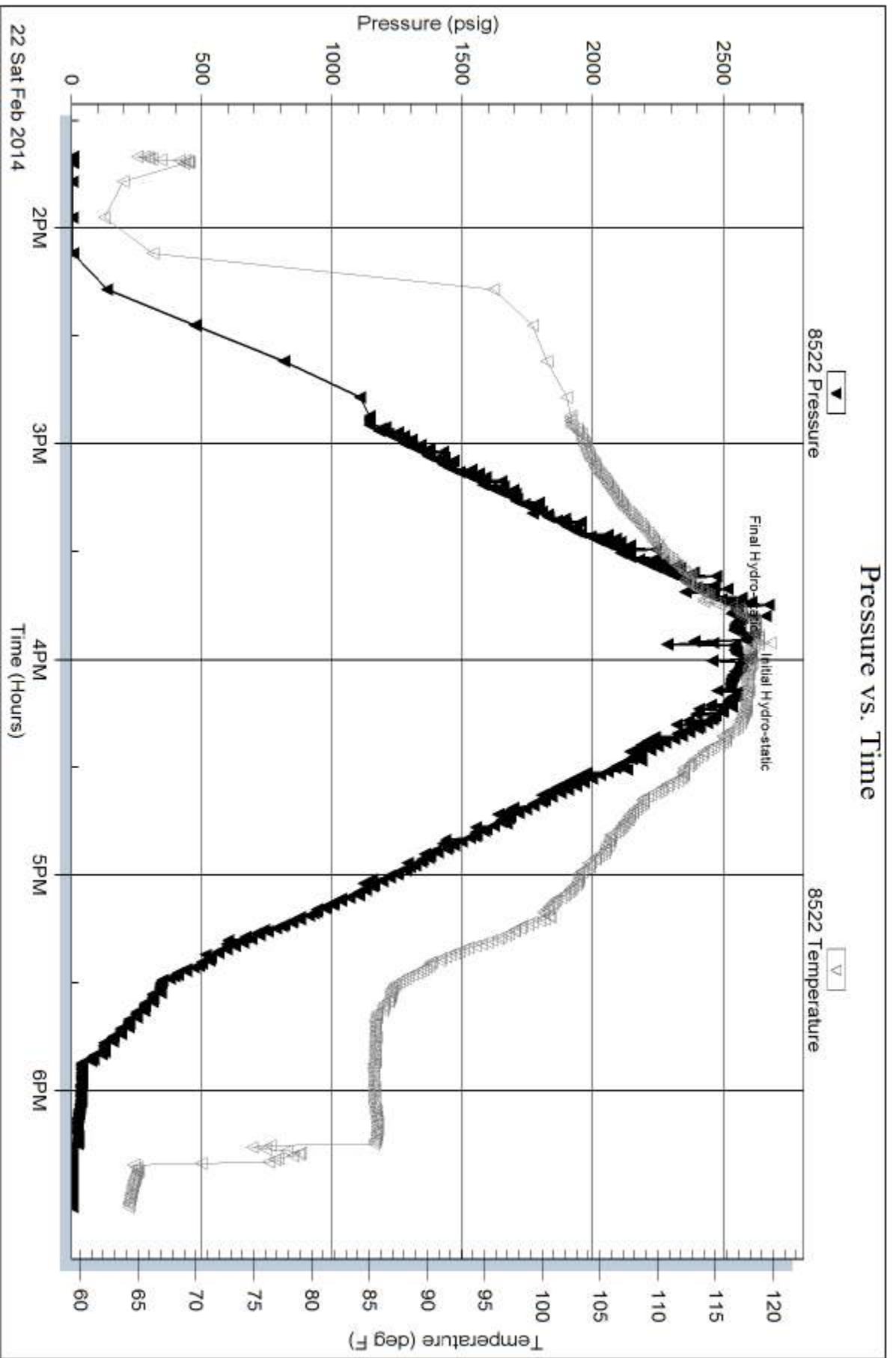
Recovery Comments:

Serial #: 8522

Outside Ring Energy Inc.

Faris Trust 35 #1

DST Test Number: 2



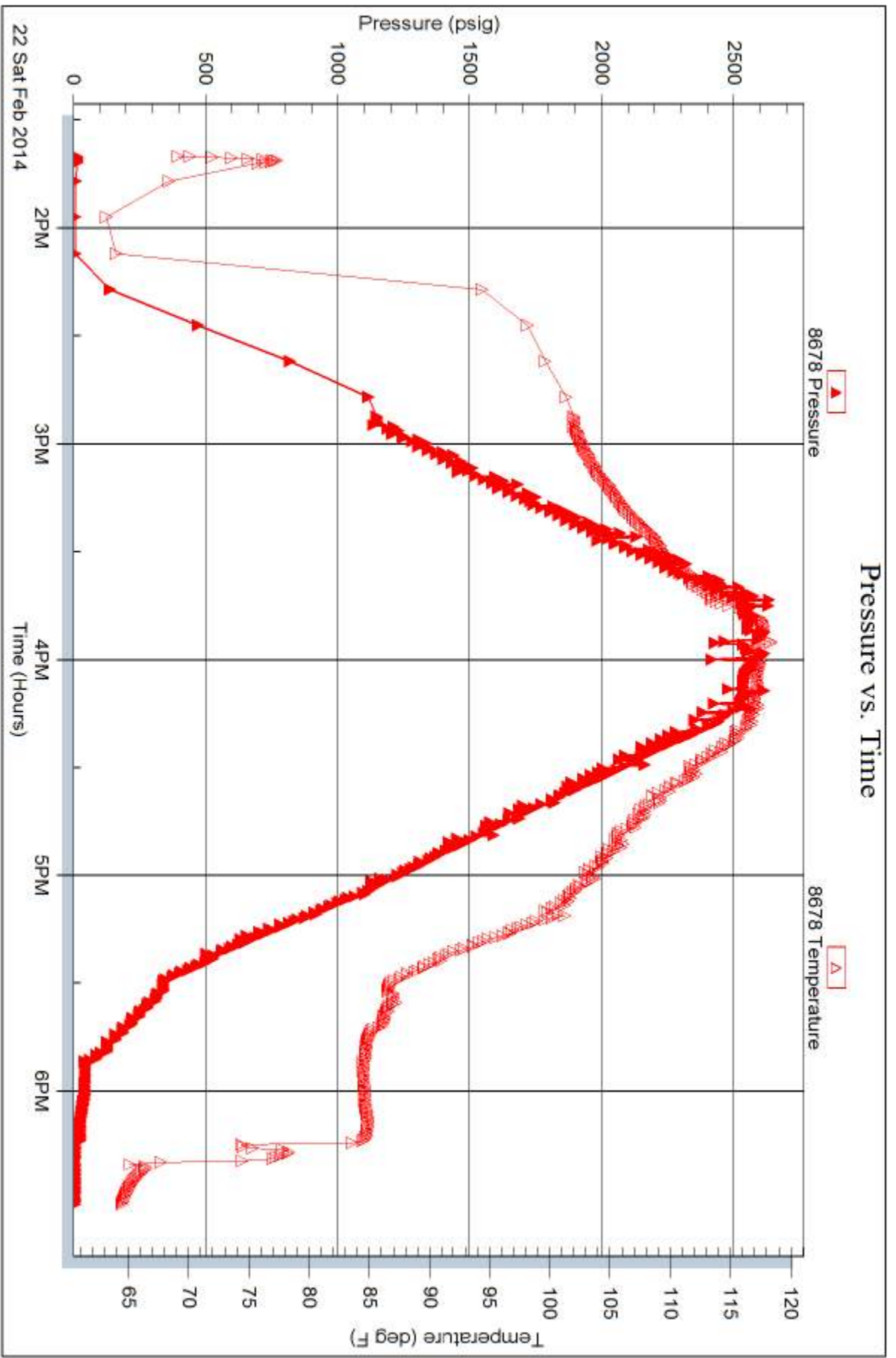
Serial #: 8678

Inside

Ring Energy Inc.

Farris Trust 35 #1

DST Test Number: 2



Trilobite Testing, Inc

Ref. No: 55715

Printed: 2014.02.25 @ 16:32:18



TRILOBITE TESTING INC.

1515 Commerce Parkway • Hays, Kansas 67601

Test Ticket

NO. 55714

Well Name & No. Faris Trust #1-35 Test No. 1 Date 2-21-14
 Company Ring Energy Inc. Elevation 2849 ~~2851~~ 2839 GL
 Address P.O. Box 11350 - Midland TX, 79702
 Co. Rep / Geo. Austin Gamer Rig Val #1
 Location: Sec. 35 Twp. 26-S Rge. 31-W Co. Finney State KS

Interval Tested 4976-5048 Zone Tested Morrow
 Anchor Length 72' Drill Pipe Run 4972 Mud Wt. 9.3
 Top Packer Depth 4972 Drill Collars Run Ø Vis 54
 Bottom Packer Depth 4976 Wt. Pipe Run Ø WL 8.0
 Total Depth 5048 Chlorides 2,000 ppm System LCM #2 1/2

Blow Description IF: surface Blow - Built to 1/2 in flow - Died back to surface blow
ISF: No Return
FF: surface blow after 10 min. open - Died in 35. Died @ 45 min. into open.

FSI: No Return

Rec	Feet of	%gas	%oil	%water	%mud
<u>10</u>	<u>Mud w/Traces of oil</u>			<u>100</u>	

Rec Total 10 BHT 123 Gravity — API RW — @ —° F Chlorides — ppm

(A) Initial Hydrostatic <u>2501</u>	<input checked="" type="checkbox"/> Test <u>1350</u>	T-On Location <u>4:05</u>
(B) First Initial Flow <u>50</u>	<input checked="" type="checkbox"/> Jars <u>250</u>	T-Started <u>5:18</u>
(C) First Final Flow <u>50</u>	<input checked="" type="checkbox"/> Safety Joint <u>75</u>	T-Open <u>8:46</u>
(D) Initial Shut-In <u>68</u>	<input checked="" type="checkbox"/> Circ Sub <u>NIC</u>	T-Pulled <u>13:16</u>
(E) Second Initial Flow <u>51</u>	<input type="checkbox"/> Hourly Standby	T-Out <u>15:34</u>
(F) Second Final Flow <u>50</u>	<input checked="" type="checkbox"/> Mileage <u>209.25 / 35 R-T</u>	Comments
(G) Final Shut-In <u>63</u>	<input type="checkbox"/> Sampler	
(H) Final Hydrostatic <u>2479</u>	<input type="checkbox"/> Straddle	<input type="checkbox"/> Ruined Shale Packer
	<input type="checkbox"/> Shale Packer	<input type="checkbox"/> Ruined Packer
Initial Open <u>30</u>	<input type="checkbox"/> Extra Packer	<input type="checkbox"/> Extra Copies
Initial Shut-In <u>60</u>	<input type="checkbox"/> Extra Recorder	Sub Total <u>0</u>
Final Flow <u>60</u>	<input type="checkbox"/> Day Standby	Total <u>1884.25</u>
Final Shut-In <u>120</u>	<input type="checkbox"/> Accessibility	MP/DST Disc't
	Sub Total <u>1884.25</u>	

Approved By Austin Gamer Our Representative [Signature]
 Trilobite Testing Inc. shall not be liable for damaged of any kind of the property or personnel of the one for whom a test is made, or for any loss suffered or sustained, directly or indirectly, through the use of its equipment, or its statements or opinion concerning the results of any test, tools lost or damaged in the hole shall be paid for at cost by the party for whom the test is made.



TRILOBITE TESTING INC.

1515 Commerce Parkway • Hays, Kansas 67601

Test Ticket

NO. 55715

Well Name & No. Faris Trust #1-35 Test No. 2 Date 2-22-14
 Company Ring Energy Inc. Elevation 2849 KB 2839 GL
 Address P.O. Box 11350 - Midland TX 79702
 Co. Rep / Geo. Austin Garner Rig Val #1
 Location: Sec. 35 Twp. 26-S Rge. 31-W Co. Finney State KS

Interval Tested 5100 - 5218 Zone Tested St. Louis BC
 Anchor Length 118' Drill Pipe Run 5099 Mud Wt. 9.4
 Top Packer Depth 5096 Drill Collars Run 0 Vis 48
 Bottom Packer Depth 5100 Wt. Pipe Run 0 WL 8.8
 Total Depth 5218 Chlorides 2000 ppm System LCM #3

Blow Description IF:
ISI:
FF:
FST:
Packer Failure
 Rec 600 Feet of mud %gas %oil %water 100 %mud
 Rec _____ Feet of _____ %gas %oil %water %mud
 Rec _____ Feet of _____ %gas %oil %water %mud
 Rec _____ Feet of _____ %gas %oil %water %mud
 Rec _____ Feet of _____ %gas %oil %water %mud

Rec Total 600 BHT 2584 118 Gravity _____ API RW _____ @ _____ ° F Chlorides _____ ppm
 (A) Initial Hydrostatic 2584 Test 1150 T-On Location 13:28
 (B) First Initial Flow _____ Jars 250 T-Started 13:40
 (C) First Final Flow _____ Safety Joint 75 T-Open 15:54
 (D) Initial Shut-In _____ Circ Sub NIC T-Pulled 15:56
 (E) Second Initial Flow _____ Hourly Standby _____ T-Out 18:32
 (F) Second Final Flow _____ Mileage 418.50 Comments _____
 (G) Final Shut-In _____ Sampler _____
 (H) Final Hydrostatic 2540 Straddle _____ Ruined Shale Packer _____
 Shale Packer _____ Ruined Packer _____

Initial Open _____ Extra Packer on location on Extra Copies _____
 Initial Shut-In _____ Extra Recorder 2-23-14 @ Sub Total 0
 Final Flow _____ Day Standby 15:00 - waited for Total 1893.50
 Final Shut-In _____ Accessibility logging truck to finish logging MP/DST Disc't _____
 Sub Total I started loading @ 17:00 + Finished @ 19:15 1893.50
 Our Representative [Signature]

Approved By [Signature]
 Trilobite Testing Inc. shall not be liable for damaged of any kind of the property or personnel of the one for whom a test is made, or for any loss suffered or sustained, directly or indirectly, through the use of its equipment, or its statements or opinion concerning the results of any test, tools lost or damaged in the hole shall be paid for at cost by the party for whom the test is made.