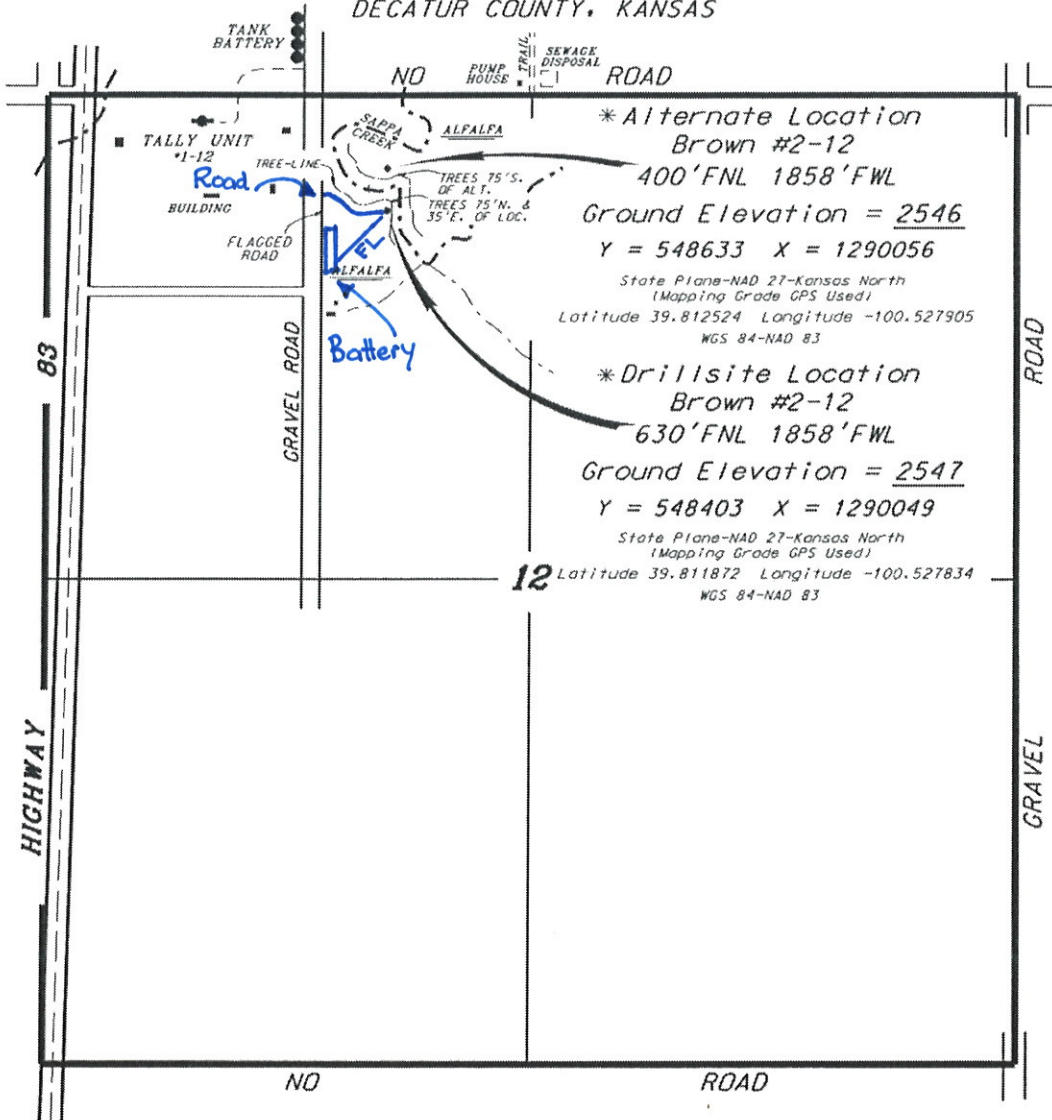


BLUERIDGE PETROLEUM CORPORATION  
 BROWN LEASE  
 NW. 1/4, SECTION 12, T3S, R29W  
 DECATUR COUNTY, KANSAS

\* Ingress and egress to location as shown on this plat is per usage only and may not be legally opened for public use. Contact landowner, tenant and county road department for access.



\* Alternate Location  
 Brown #2-12  
 400'FNL 1858'FWL  
 Ground Elevation = 2546  
 Y = 548633 X = 1290056  
 State Plane-NAD 27-Kansas North  
 (Mapping Grade GPS Used)  
 Latitude 39.812524 Longitude -100.527905  
 WGS 84-NAD 83

\* Drillsite Location  
 Brown #2-12  
 630'FNL 1858'FWL  
 Ground Elevation = 2547  
 Y = 548403 X = 1290049  
 State Plane-NAD 27-Kansas North  
 (Mapping Grade GPS Used)  
 Latitude 39.811872 Longitude -100.527834  
 WGS 84-NAD 83



- LEGEND**
- Well Location
  - Tank Battery Location
  - Pipeline Location
  - Electric Line Location
  - ▬ Lease Road Location

\* Controlling data is based upon the best maps and photographs available to us and upon a regular section of land containing 640 acres.  
 \* Approximate section lines were determined using the normal standard of care of oilfield surveyors practicing in the state of Kansas. The section corners, which establish the precise section lines, were not necessarily located, and the exact location of the drillsite location in the section is not guaranteed. Therefore, the operator, securing this service and accepting this plat and all other parties relying thereon agree to hold Central Kansas Oilfield Services, Inc., its officers and employees harmless from all losses, costs and expenses and said entities released from any liability from incidental or consequential damages.  
 \* Elevations derived from National Geodetic Vertical Datum.

Date September 14, 2016