

GEOLOGIST'S REPORT

WellSight Systems

Scale 1:240 (5"=100') Imperial
Measured Depth Log

Well Name: JANZEN #4-36
API: 15-171-21036-00-00
Location: 950 FSL & 1150 FEL OF SECTION 36 T16S R34W
License Number: KCC #7311
Spud Date: 3/18/2014
Surface Coordinates: 950 FSL & 1150 FEL OF SECTION

Region: SCOTT COUNTY
Drilling Completed:

Bottom Hole VERTICAL TEST
Coordinates:
Ground Elevation (ft): 3097
Logged Interval (ft): 3700 To: TD
Formation: MISSISSIPPIAN
Type of Drilling Fluid: GEL

K.B. Elevation (ft): 3109
Total Depth (ft):

Printed by STRIP.LOG from WellSight Systems 1-800-447-1534 www.WellSight.com

OPERATOR

Company: SHAKESPEARE OIL COMPANY, INC.
Address: 202 WEST MAIN STREET
SALEM, IL
62881

GEOLOGIST


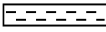

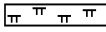
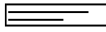
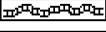




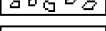


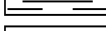




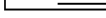
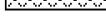
Name: MARK W. HERNDON
Company: TRC
Address: P.O. BOX 5958
NORMAN, OK
73070

Cores

DSTs

Comments

ROCK TYPES

	Anhy		Clyst		Gyp		Mrlst		Shgy
	Bent		Coal		Igne		Salt		Sltst
	Brec		Congl		Lmst		Shale		Ss
	Cht		Dol		Meta		Shcol		Till

ACCESSORIES

MINERAL

- Anhy
- Arggrn
- Arg
- Bent
- Bit
- Breclrag
- Calc
- Carb
- Chtdk
- Chtlt
- Dol
- Feldspar
- Ferrpel
- Ferr
- Glau

- Gyp
- Hvymin
- Kaol
- Marl
- Minxl
- Nodule
- Phos
- Pyr
- Salt
- Sandy
- Silt
- Sil
- Sulphur
- Tuff

FOSSIL

- Algae
- Amph
- Belm
- Bioclst
- Brach
- Bryozoa
- Cephal
- Coral
- Crin
- Echin
- Fish
- Foram
- Fossil
- Gastro
- Oolite

- Ostra
- Pelec
- Pellet
- Pisolite
- Plant
- Strom

STRINGER

- Anhy
- Arg
- Bent
- Coal
- Dol
- Gyp
- Ls
- Mrst

- Slstgrg
- Ssstrg

TEXTURE

- Boundst
- Chalky
- Cryxln
- Earthy
- Finexln
- Grainst
- Lithogr
- Microxln
- Mudst
- Packst
- Wackest

OTHER SYMBOLS

POROSITY

- Earthy
- Fenest
- Fracture
- Inter
- Moldic
- Organic
- Pinpoint

- Vuggy

SORTING

- Well
- Moderate
- Poor

ROUNDING

- Rounded
- Subrnd
- Subang
- Angular

- Spotted
- Ques
- Dead

INTERVAL

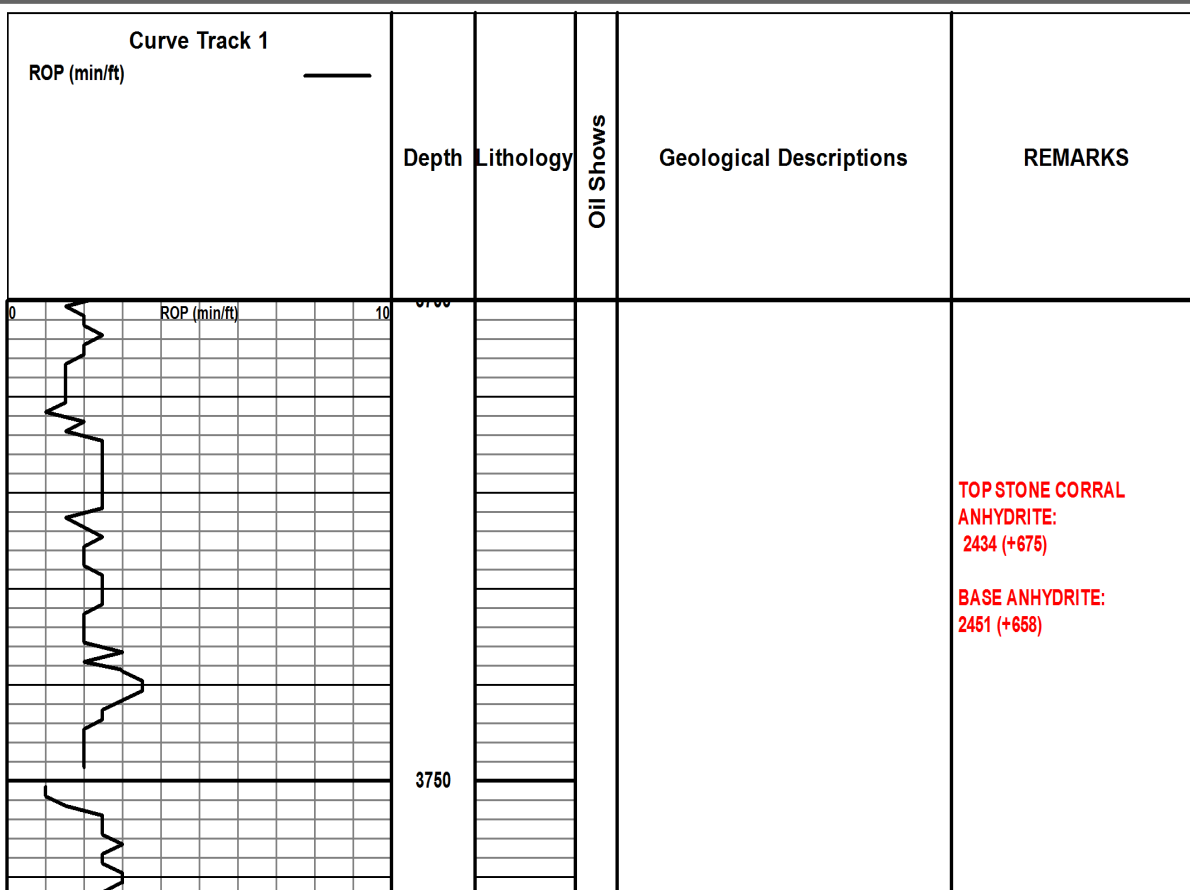
- Core
- Dst

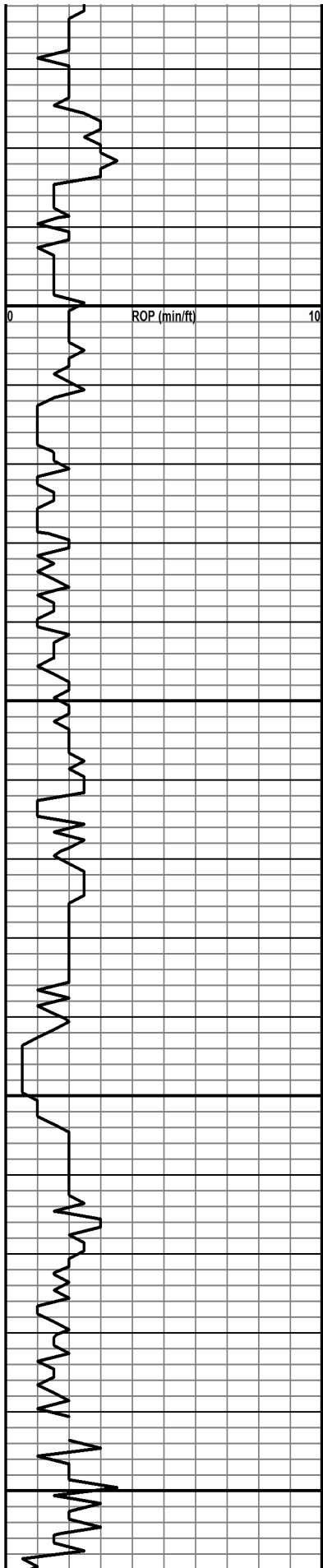
EVENT

- Rft
- Sidewall

OIL SHOW

- Even





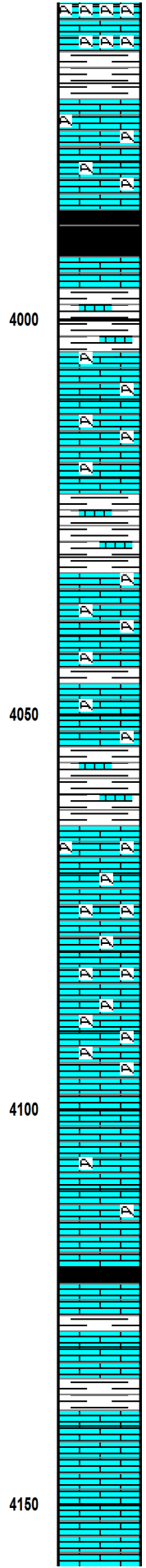
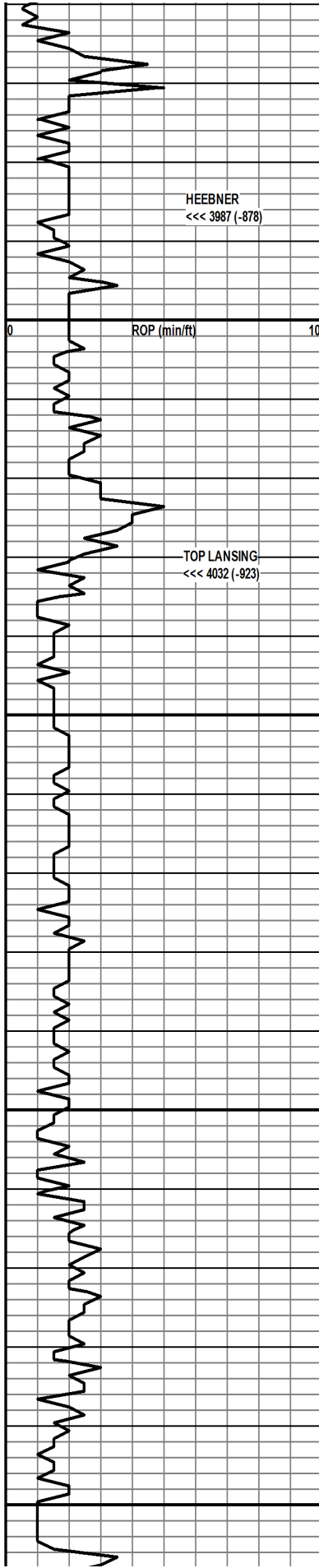
3800

3850

3900

3950





LS: CRMY TO LT GRY, FOS, FR FOS MOLDIC POR, NS

LS: CRMY TO LT GRY, DNSE, FOS, NVP, NS

SHALE: BLACK, CARB

LS & SH: LS CRMY TO LT GRY, DNSE, NVP, NS. SH IS GRY, FISSILE

LS: CRMY TO LT GRY, MED XTLN, FOS (CORAL & BRYOZONS), WL CMNTD, NVP, NS

LS: CRMY TO LT GRY, MED XTLN, FOS (CORAL & BRYOZOANS, WL CMNTD, NVP, NS

SHALE: GRY

LS: CRMY TO LT GRY, XTLN, OCC FOS, WL CMNTD, OCC POOR PP VUGGY POR, VRY RARE SPTD BLK O STN. NO FLOUR.

LS: CRMY TO LT GRY, MED XTLN, OCC FOS (CORAL), WL CMNTD, VRY RARE PP VGY POR, SLI SHO BLK O STN, NO FLOUR

SHALE: DRK GRY FISSILE WLS: CRMY TO LT GRY, DNSE, NVP, NS

LS: CHLKY WH TO LT TAN, FOS, WL CMNTD, NVP, NS

LS: CHLKY TO GRY, FOS, OCC OOID, WL CMNTD, NVP, NS

LS: CHLKY TO GRY, FOS, WL CMNTD, NVP, NS

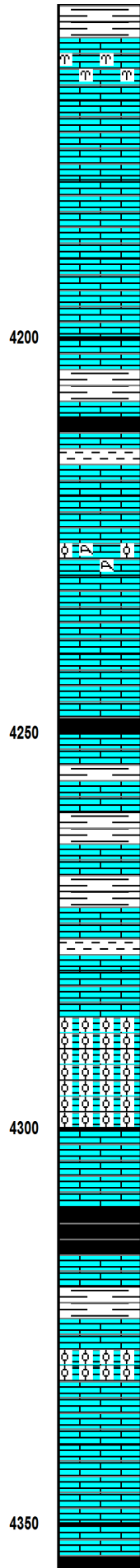
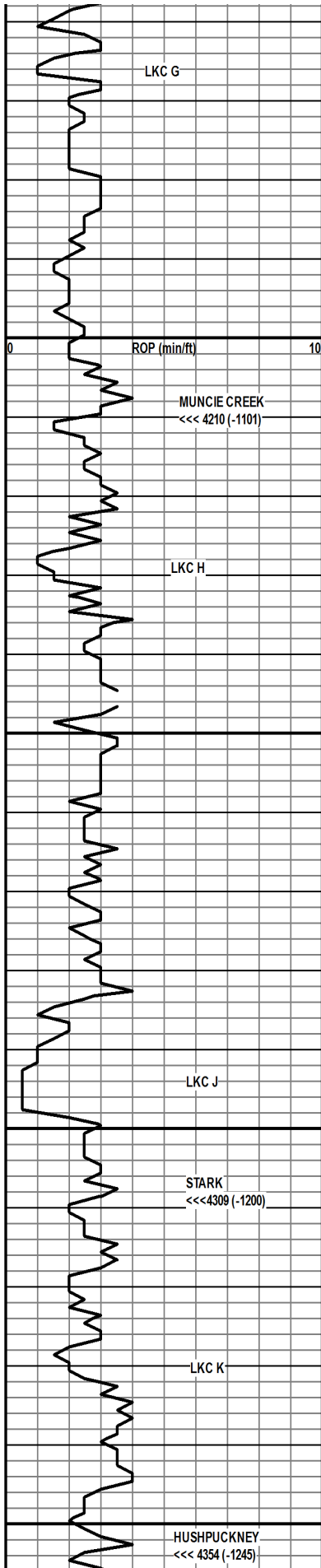
LS: CHLKY TO GRY, OCC FOS, OCC DK GRY OOID, WL CMNTD, NVP, NS

LS: CHLKY TO LT GRY, OCC FOS, WL CMNTD, NVP, NS

LS: WH TO LT GRY, XTLN, COUPLE PIECES W VERY FINE SPONGY MOLDIC POR, SPTY DK BRN OIL STN

SHALE: GRY, FISSILE

LS: LT TAN TO GRY, MED XTLN, WL CMNTD, NVP, OCC SLI SHO BLK OIL, WK YLW FLOUR, NO CUT



LS: MSTLY CHLKY TO LT GRY, DNSE, NVP, NS. COUPLE PIECES WITH VRY FN SPONGY FOS MOLDIC POROSITY (BRYOZOANS), YLW FLOUR, STRMNG CUT.

LS: CHLKY TO LT GRY, DNSE, NVP, NS

LS: CHLKY TO LT GRY, DNSE, NVP, NS

LS: CHLKY TO LT GRY, DNSE, NVP, NS

SHALE: GRY, FISSILE

SHALE: BLACK, CARB

LS: CRMY TO LT TAN, DNSE, NVP, NS

LS: CRMY TO DRK GRY, XTLN, MED FOS FRAG & OOL, 2 PCS W VRY POOR PP VGY POR, SPTY BLACK OS

LS: LT TAN TO GRY, DNSE, NVP, NS

SHALE: BLACK, CARB

LS: WH TO LT GRY, FN XTLN, DNSE, SL FOS, NVP, NS

SHALE: GRY, FISSILE

LS: CHLKY TO LT GRY, DNSE, NVP, NS

LS: LT TAN TO GRY, DNSE, NVP, NS

LS: WH TO LT GRY, MSTLY DNSE, NUM PCS W EXC OOLICASTIC POR, VUGS LINED WITH SPARRY SUGARY CALCITE, NS. NO VIS PERM

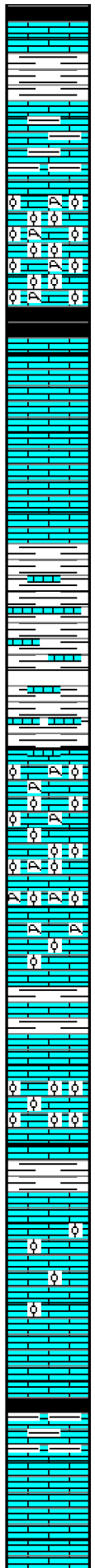
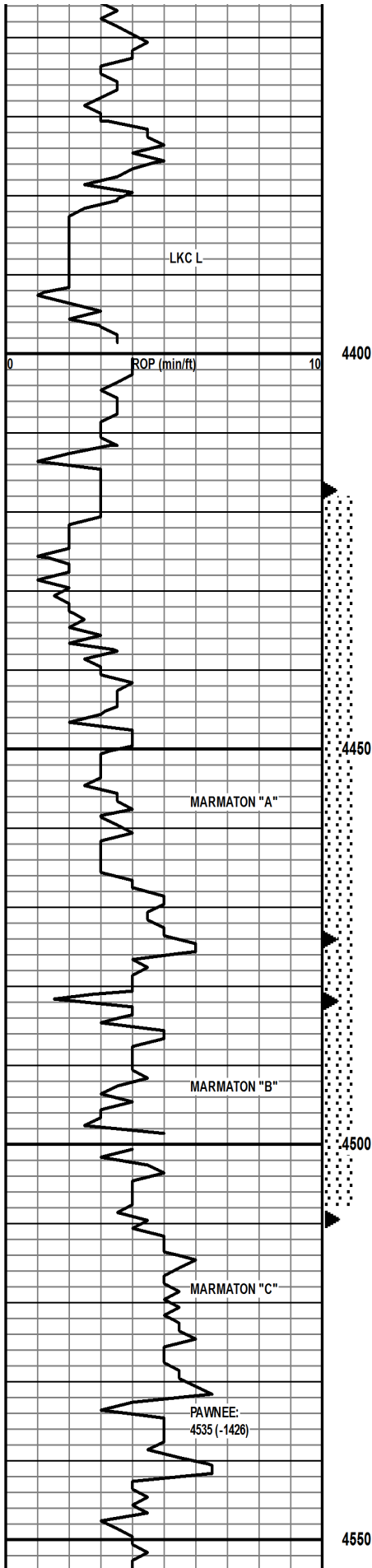
LS: LT TAN TO GRY, DNSE, NVP, NS

SHALE: BLACK, CARB

LS: LT TAN TO LT GRY, MSTLY DNSE W NVP. OCC PCS WH, XTLN, EXC OOLICASTIC POR. NS

LS: LT TAN TO GRY, DNSE, NO FOS, NVP, NS

LS: LT TAN TO GRY, DNSE, NO FOS, NVP, NS



SHALE: BLACK, CARB

SHALE: LT TO DRK GRY, FISSILE, WFR AMNT TITE LT TAN LS. NVP, NS.

LS: LT TAN TO GRY, DNSE, NVP, NS

LS: WH TO LT GRY, OOL, FOS, MSTLY WL CMNTD GRNSTN WOCC EXC OOLICASTIC POR. NS

SHALE: BLACK, CARB

LS: CRMY TO GRY, DNSE, NVP, NS

LS: CRMY TO GRY, DNSE, NVP, NS

LS: CRMY TO GRY, DNSE, NVP, NS

SHALE: DRK GRY WFRAMNT LT TAN TITE DNSE LS. NVP, NS.

SHALE: DRK GRY WFRAMNT LT TAN TITE DNSE LS. NVP, NS.

LS: LT TAN TO GRY, MSTLY WL CMNTD OOL AND FOS FRAGS, OCC OOLICASTIC, FEW PCS WFR VGY COARSE XTLN POR AND GOOD EVEN LT BRN O STN. BRT YLW FLOUR, INST STRMNG CUT

LS: LT TAN TO GRY, OOL, FOS, MSTLY TITE WL CMNTD MATRIX. OCC PC WFR VGY & INTXLN POR AND NICE LT BRN LOS. BRT YLW FLOUR, INST STRM CUT

LS: AAB. NO VIS POR, NS

SHALE AND LS: DRK GRY FISSILE SH WLT TAN DNSE LS. NVP, NS

LS: MSTLY LT TAN, DNSE, NVP. FEW PCS WFR COARSE OOL & INTXLN POR, SPARRY CALCITE, LT BRN O STN, DULL YLW FLOUR, INST STRMNG CUT.

LS: LT TAN, DNSE, NVP, NS

LS: LT TAN, MSTLY DNSE, OCC FN GRN DK GRY OIDS IN WL CMNTD MTRX, NVP, NS

LS: LT TAN TO GRY, DNSE, NVP, NS

SHALE: BLACK, CARB

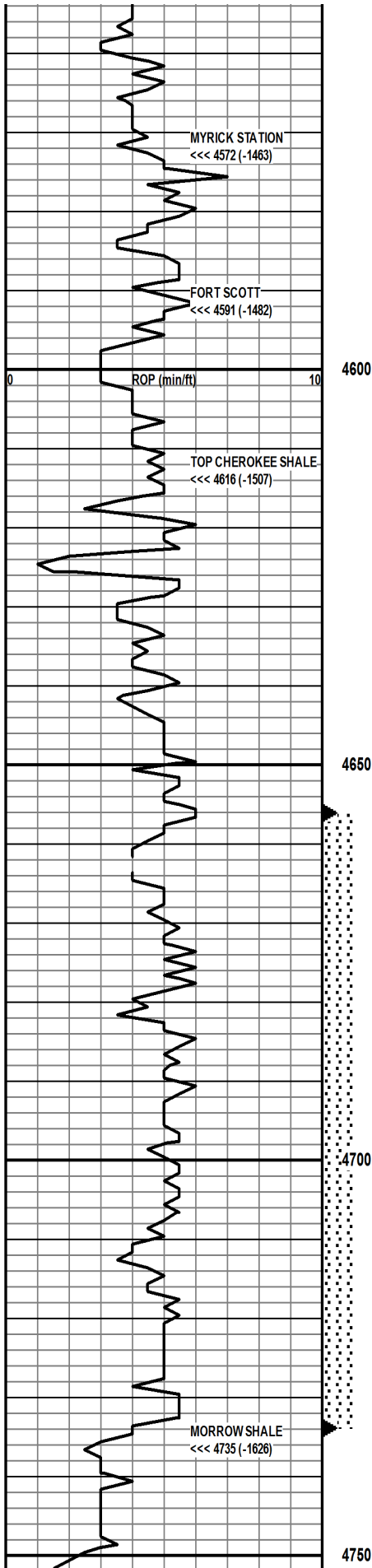
LS: LT TAN, DNSE, NVP, NS, WFRAMNT DRK GRY FISSILE SHALE

LS: WH TO LT TAN, DNSE, NVP, NS

DST #1 MARMATON "A"
 4417 TO 4482
 30-30-45-90
 IF: BOB IN 28 MIN, NO RETURN
 FF: BOB IN 27 MIN, RETURN:
 1/2" IN 8 MIN DIED IN 30 MIN
 RECOVERY: 330 FT GIP
 45 FT CGO GRAV 34
 45 FT SGO CM
 HP: 2252-2206
 IF: 19-37 FF: 35-58
 SIP: 1174-1238

DST #2 MARMATON "B"
 4474 TO 4510
 30-30-45-90
 IF: 7 IN BLOW IN 30 MIN
 NO RETURN
 FF: 10 IN BLOW IN 45 MIN
 RETURN: WK SURF BLOW IN
 8 MIN, DIED IN 53 MIN
 RECOVERY: 140 FT GIP,
 30 FT SGO,
 10 FT SGMCO
 HP: 2259-2190
 IF: 17-16
 FF: 21-24
 SIP: 1044-1226

**SURVEY: 1 DEGREE
 STRAP 2.3' LONG TO BOARD**



LS: WH TO LT TAN, DNSE, NVP, NS

LS: WH TO LT TAN, DNSE, NVP, NS

SHALE: BLACK, CARB

LS: WH TO LT TAN, DNSE, NVP, NS

SHALE: BLACK, CARB

LS: WH TO LT TAN, MSTLY DNSE, W NUM FOS (BRYOZOANS) IN WL CMNTD TITE MTRX, NVP, NS

LS: WH TO LT TAN, DNSE, NVP, NS

SHALE: BLACK, CARB

LS: WH TO GRY, FN XTLN, FOS, OCC OIDS, OCC VRY FN SPONGY MOLDIC POR, NS

LS: WH TO GRY, FN XTLN, OCC FOS, WL CMNTD, NVP, NS

SHALE: BLACK

LS: WH TO GRY, FOS, DNSE, NVP, NS

LS: WH TO GRY, DNSE, GD SHO DK BRN OIL, NO VISIBLE POROSITY

LS: WH TO GRY, DNSE, OCC DK GRY OOID, WL CMNTD, NVP, NS

SHALE: GRY, FISSILE

LS: WH TO GRY, OCC FOS, DNSE, NVP, NS

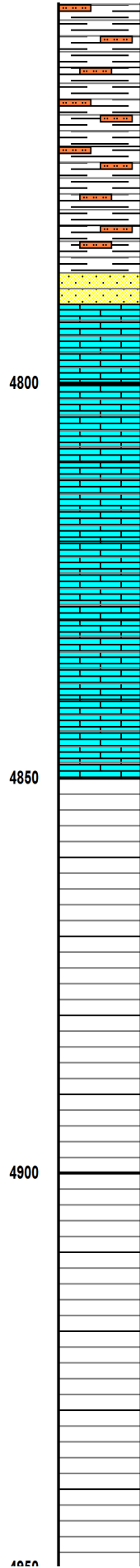
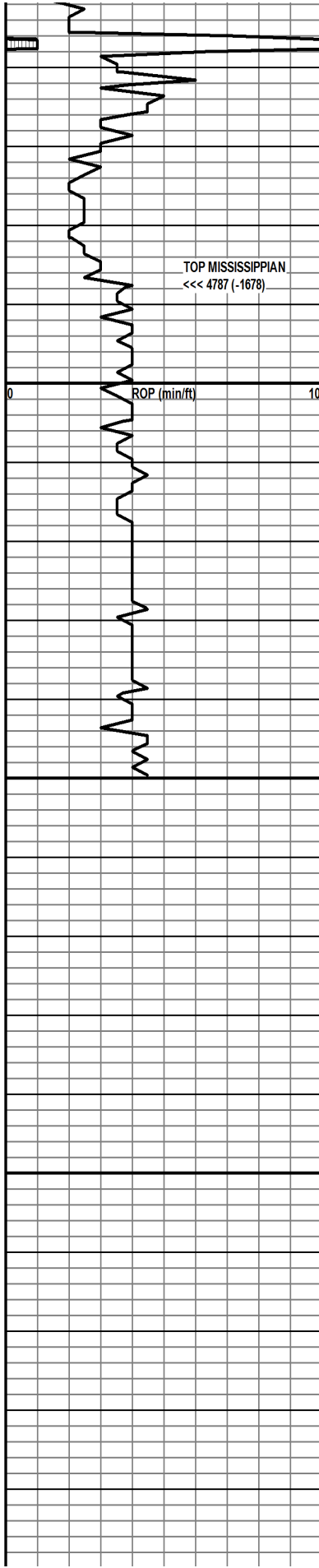
LS: WH TO GRY, OCC FOS, DNSE, NVP, NS

LS: WH TO GRY, MED XTLN, FOS (CORAL), OCC VGY POR WEXC SHO DK BRN LV OIL. DULL YLW FLOUR, INST STRM CUT,

LS: LT TAN TO GRY, MD XTLN, OCC FOS, DNSE, NVP, NS

SHALE: GREEN, MAROON, FISSILE

DST #3 JOHNSON ZONE
4656-4744
30-30-30-30
IF: SL BLW DIED
FF: NO BLOW
RECOVERY: 5 FT MUD
HP: 2405-2338
IF: 21-23
FF: 37-82
SIP: 114-82



SHALE: GREEN, RED, BLACK, FISSILE

SHALE: VARI COLORED, OCC DK GRY SLTSTN.

SHALE: GREEN, RED, BLACK, FISSILE

SANDSTONE: WH, V FN GR, RNDED, WL SRTD, CALCITE CMNT, OCC GREEN GLAUC, NVP, NS

LS: LT TAN, MD XTLN, DNSE, NVP, NS

LS: LT TAN, MD XTLN, DNSE, NVP, NS

LS: LT TAN, MD XTLN, DNSE, NVP, NS

LS: LT TAN, MD XTLN, DNSE, NVP, NS

LS: LT TAN, MD XTLN, DNSE, NVP, NS

LS: LT TAN, MD XTLN, DNSE, NVP, NS

BIT HUNG UP

RTD: 4860

