



**TRILOBITE TESTING, INC**

# DRILL STEM TEST REPORT

Shakespeare Oil Company, Inc.

**32-16s-34w Scott,KS**

202 W Main ST  
Salem IL, 62881 - 1519

**Schwalter #1-32**

Job Ticket: 56469

**DST#: 1**

ATTN: Tim Priest

Test Start: 2014.04.17 @ 04:45:00

## GENERAL INFORMATION:

Formation: **Marmaton " A & B "**

Deviated: No Whipstock: ft (KB)

Time Tool Opened: 07:25:00

Time Test Ended: 11:45:00

Test Type: Conventional Bottom Hole (Initial)

Tester: Jace McKinney

Unit No: 75

Interval: **4493.00 ft (KB) To 4538.00 ft (KB) (TVD)**

Reference Elevations: 3160.00 ft (KB)

Total Depth: 4538.00 ft (KB) (TVD)

3150.00 ft (CF)

Hole Diameter: 7.88 inches Hole Condition: Poor

KB to GR/CF: 10.00 ft

**Serial #: 8675** Inside

Press@RunDepth: 33.50 psig @ 4494.00 ft (KB)

Capacity: 8000.00 psig

Start Date: 2014.04.17

End Date: 2014.04.17

Last Calib.: 2014.04.17

Start Time: 04:45:15

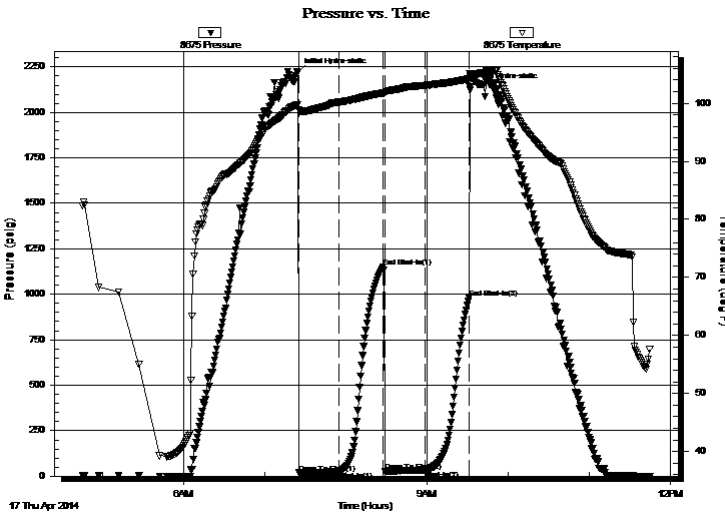
End Time: 11:45:00

Time On Btm: 2014.04.17 @ 07:24:15

Time Off Btm: 2014.04.17 @ 09:31:30

TEST COMMENT: Built to 1/4" blow  
No return blow  
No blow  
No return blow

## PRESSURE SUMMARY



Time (Min.)	Pressure (psig)	Temp (deg F)	Annotation
0	2220.22	99.81	Initial Hydro-static
1	17.43	98.93	Open To Flow (1)
31	24.46	100.18	Shut-In(1)
63	1149.29	101.75	End Shut-In(1)
65	27.24	101.77	Open To Flow (2)
95	33.50	103.08	Shut-In(2)
127	981.08	104.19	End Shut-In(2)
128	2139.27	105.01	Final Hydro-static

## Recovery

Length (ft)	Description	Volume (bbl)
10.00	100% Mud	0.05

## Gas Rates

Choke (inches)	Pressure (psig)	Gas Rate (Mcf/d)



**TRILOBITE  
TESTING, INC**

# DRILL STEM TEST REPORT

## FLUID SUMMARY

Shakespeare Oil Company, Inc.

**32-16s-34w Scott,KS**

202 W Main ST  
Salem IL, 62881 - 1519

**Schowalter #1-32**

Job Ticket: 56469

**DST#: 1**

ATTN: Tim Priest

Test Start: 2014.04.17 @ 04:45:00

### Mud and Cushion Information

Mud Type: Gel Chem

Cushion Type:

Oil API:

deg API

Mud Weight: 9.00 lb/gal

Cushion Length:

ft

Water Salinity:

ppm

Viscosity: 55.00 sec/qt

Cushion Volume:

bbbl

Water Loss: 7.98 in<sup>3</sup>

Gas Cushion Type:

Resistivity: ohm.m

Gas Cushion Pressure:

psig

Salinity: 6800.00 ppm

Filter Cake: 1.00 inches

### Recovery Information

Recovery Table

Length ft	Description	Volume bbl
10.00	100% Mud	0.049

Total Length: 10.00 ft      Total Volume: 0.049 bbl

Num Fluid Samples: 0

Num Gas Bombs: 0

Serial #:

Laboratory Name:

Laboratory Location:

Recovery Comments:

### Pressure vs. Time

