



**TRILOBITE TESTING, INC.**

# DRILL STEM TEST REPORT

Shakespeare Oil Company, Inc.

**32-16s-34w Scott Co, KS**

202 W Main ST  
Salem IL, 62881 - 1519

**Schowalter #1-32**

Job Ticket: 56470

**DST#: 2**

ATTN: Tim Priest

Test Start: 2014.04.18 @ 06:35:00

## GENERAL INFORMATION:

Formation: **Fort Scott**

Deviated: No Whipstock: ft (KB)

Time Tool Opened: 09:19:00

Time Test Ended: 13:39:00

Test Type: Conventional Bottom Hole (Reset)

Tester: Jace McKinney

Unit No: 75

**Interval: 4618.00 ft (KB) To 4645.00 ft (KB) (TVD)**

Reference Elevations: 3160.00 ft (KB)

Total Depth: 4645.00 ft (KB) (TVD)

3150.00 ft (CF)

Hole Diameter: 7.88 inches Hole Condition: Poor

KB to GR/CF: 10.00 ft

**Serial #: 8675**

**Inside**

Press @ Run Depth: 15.92 psig @ 4619.00 ft (KB)

Capacity: 8000.00 psig

Start Date: 2014.04.18

End Date:

2014.04.18

Last Calib.:

2014.04.18

Start Time: 06:35:15

End Time:

13:39:00

Time On Btm:

2014.04.18 @ 09:18:30

Time Off Btm:

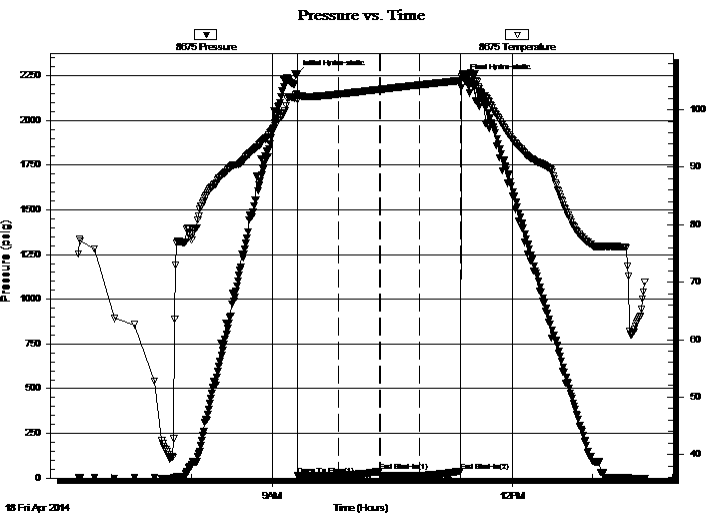
2014.04.18 @ 11:23:30

**TEST COMMENT:** Weak surface blow

No return blow

No blow

No return blow



## PRESSURE SUMMARY

Time (Min.)	Pressure (psig)	Temp (deg F)	Annotation
0	2257.69	102.78	Initial Hydro-static
1	14.64	101.67	Open To Flow (1)
32	16.12	102.71	Shut-In(1)
62	37.64	103.53	End Shut-In(1)
63	15.26	103.54	Open To Flow (2)
92	15.92	104.31	Shut-In(2)
123	39.65	105.09	End Shut-In(2)
125	2233.47	106.11	Final Hydro-static

## Recovery

Length (ft)	Description	Volume (bbl)
5.00	100% Mud	0.02

\* Recovery from multiple tests

## Gas Rates

Choke (inches)	Pressure (psig)	Gas Rate (Mcf/d)



**TRILOBITE  
TESTING, INC.**

# DRILL STEM TEST REPORT

**FLUID SUMMARY**

Shakespeare Oil Company, Inc.

**32-16s-34w Scott Co, KS**

202 W Main ST  
Salem IL, 62881 - 1519

**Schowalter #1-32**

Job Ticket: 56470

**DST#: 2**

ATTN: Tim Priest

Test Start: 2014.04.18 @ 06:35:00

## Mud and Cushion Information

Mud Type: Gel Chem

Cushion Type:

Oil API:

deg API

Mud Weight: 9.00 lb/gal

Cushion Length:

ft

Water Salinity:

ppm

Viscosity: 52.00 sec/qt

Cushion Volume:

bbbl

Water Loss: 7.99 in<sup>3</sup>

Gas Cushion Type:

Resistivity: ohm.m

Gas Cushion Pressure:

psig

Salinity: 6000.00 ppm

Filter Cake: 1.00 inches

## Recovery Information

Recovery Table

Length ft	Description	Volume bbl
5.00	100% Mud	0.025

Total Length: 5.00 ft      Total Volume: 0.025 bbl

Num Fluid Samples: 0

Num Gas Bombs: 0

Serial #:

Laboratory Name:

Laboratory Location:

Recovery Comments:

Serial #: 8675

Inside

Shakespeare Oil Company, Inc.

Schow alter #1-32

DST Test Number: 2

