

PENCO ENGINEERING, P.A.  
P.O. BOX 392  
PLAINVILLE, KS 67663  
(785) 434-4611

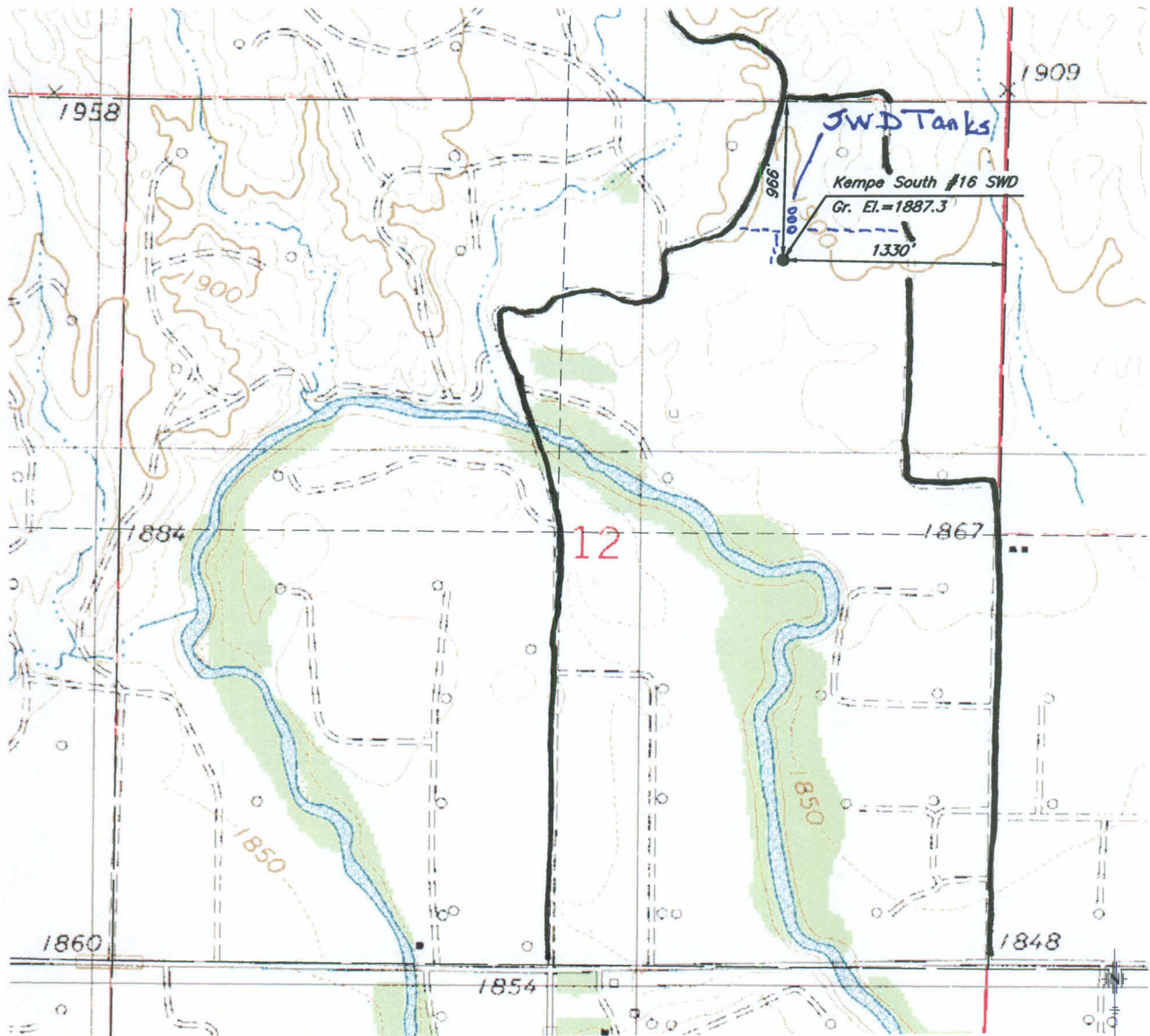
Lease Roads ———  
SW Lines - - - - -

SE 1/4, NW 1/4, NE 1/4, Section 12, T11S, R18W  
LOCATION

October 16, 2013  
DATE

Kempe South #16 SWD  
LEASE LOCATION NO.

Ellis  
COUNTY



Elevations based on NGS Benchmark E 158 Reset.  
Standard disk located on the south end of the west hub guard of the Saline River bridge on  
U.S. Hwy. 183. NAVD 88 Sea Level Elevation= 1905.80 feet.

This Survey does not constitute a boundary survey. Section corners were not found or set.  
Physical evidence was used to approximate the location of the section corners.

Scale: 1" = 1000'

X:\loc2\s0\2013\s013098-s013105-Venture\ACAD\Sec 12-11-18 Kempe South #16 SWD.dwg