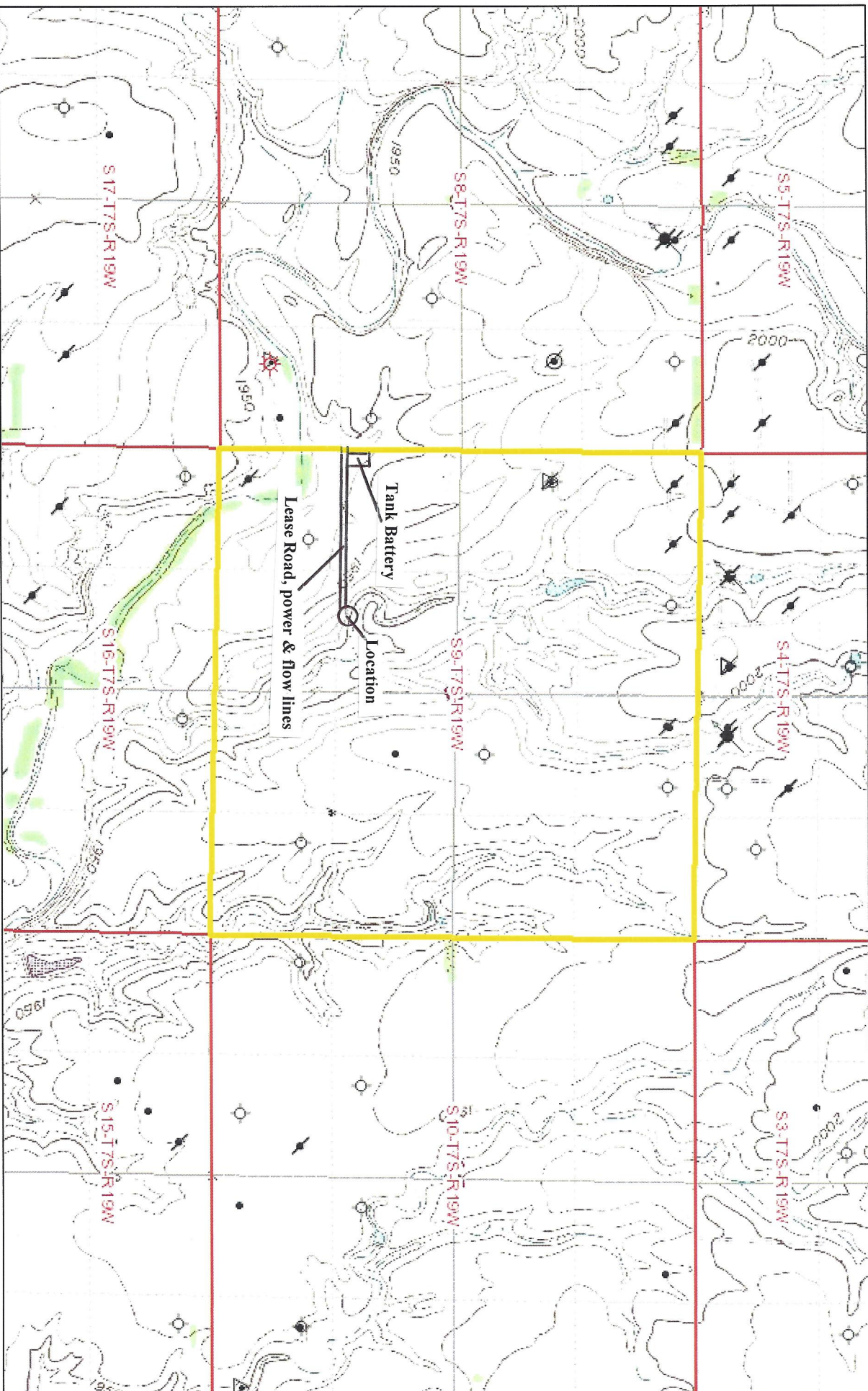
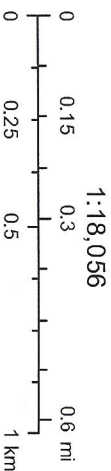


GRIEBEL 9-1



May 5, 2014

SESWNENW SEC 9 T7S, R19W
ROOKS COUNTY, KANSAS



Sources: Esri, HERE, DeLorme, TomTom, Intermap, increment P Corp.,
GEBCO, USGS, FAO, NPS, NRCAN, Geobase, IGN, Kadaster NL,