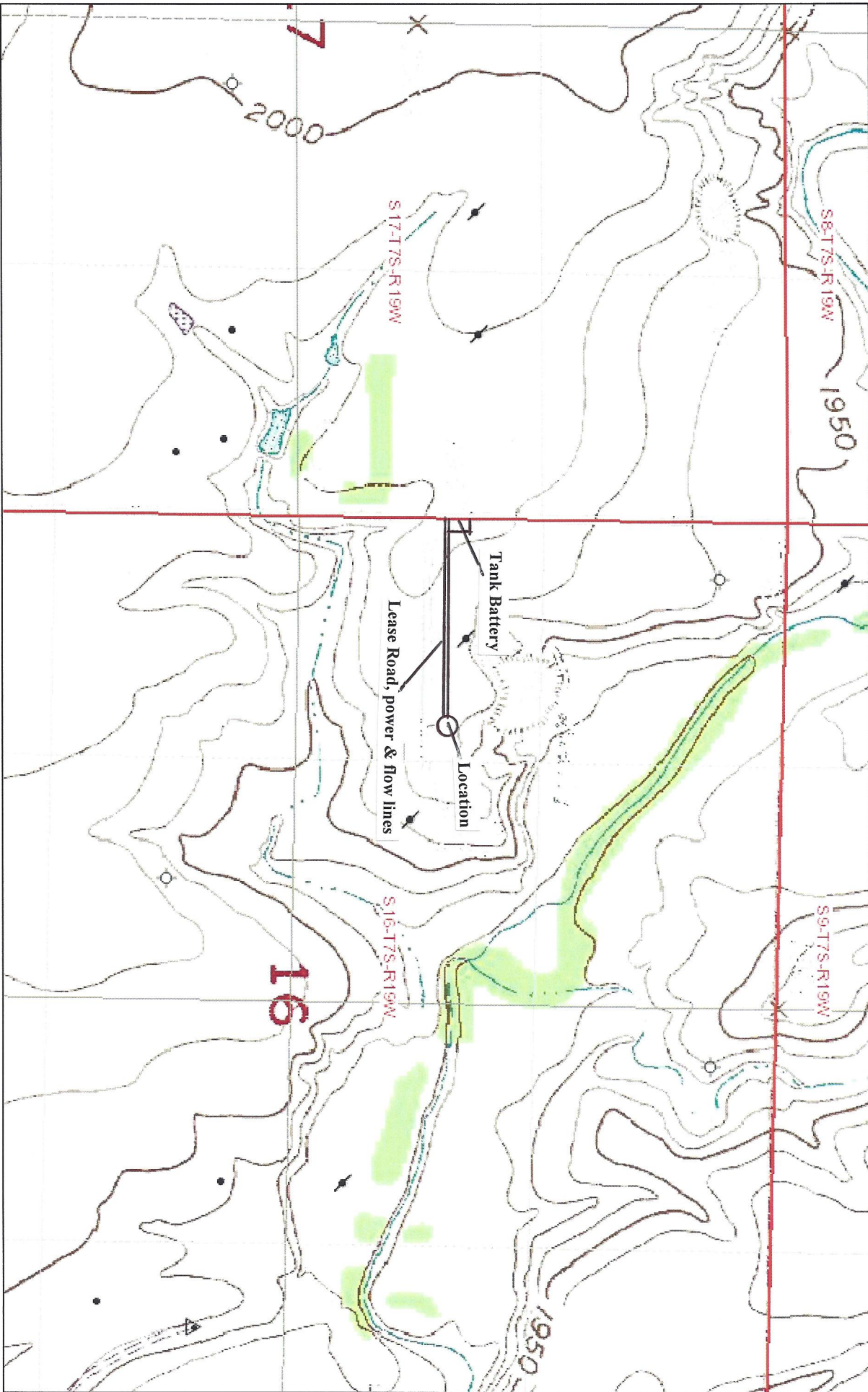
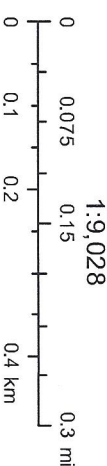


GRIEBEL 16-1



May 5, 2014

SENESW1/4 SEC 16 T7S, R19W
ROOKS COUNTY, KANSAS



Sources: Esri, HERE, DeLorme, TomTom, Intermap, increment P Corp., GEBCO, USGS, FAO, NPS, NRCAN, Geobase, IGN, Kadaster NL,