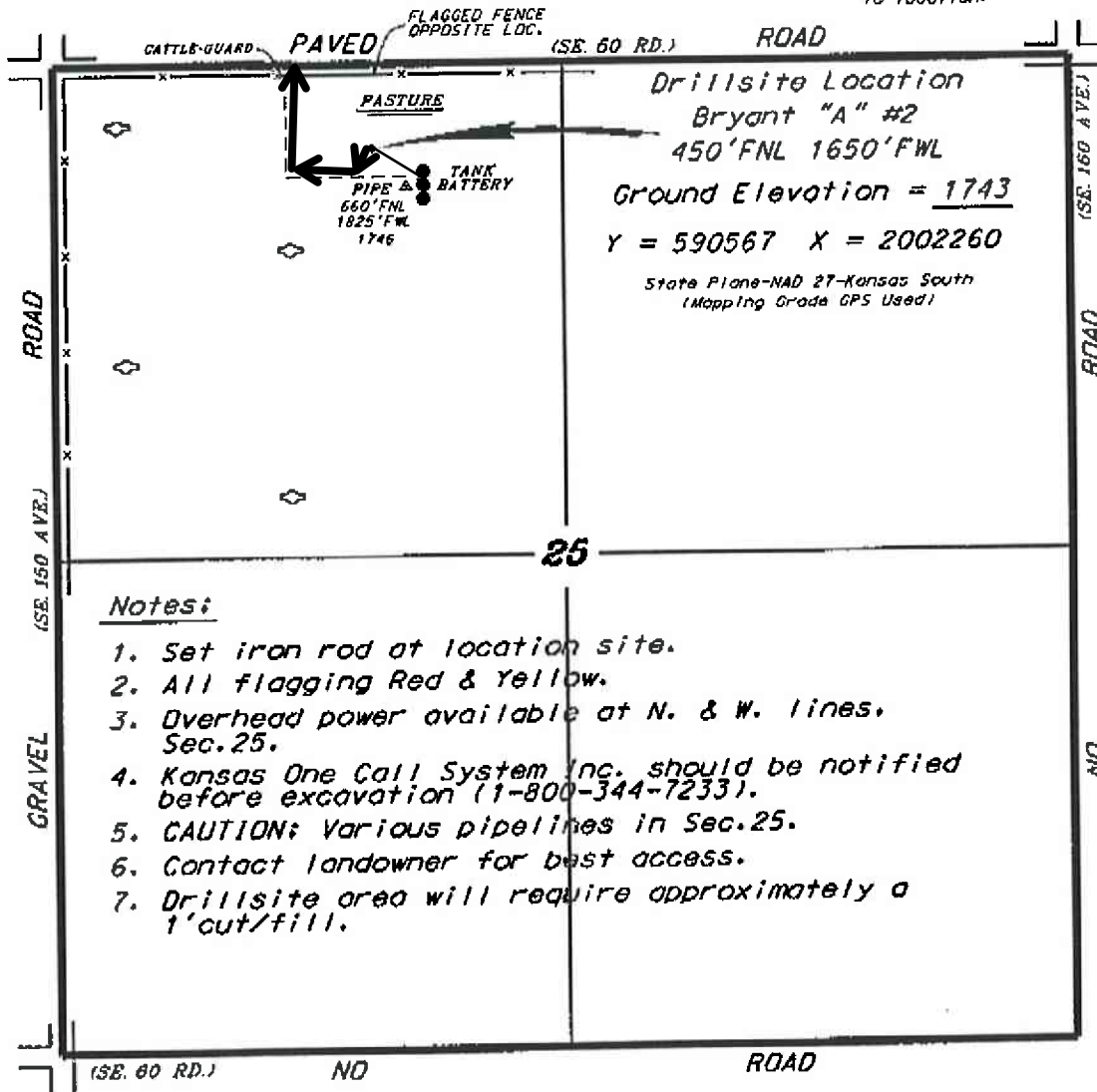


L.D. DRILLING, INC.
BRYANT LEASE
 NW. 1/4, SECTION 25, T20S, R11W
 BARTON COUNTY, KANSAS

Directions:

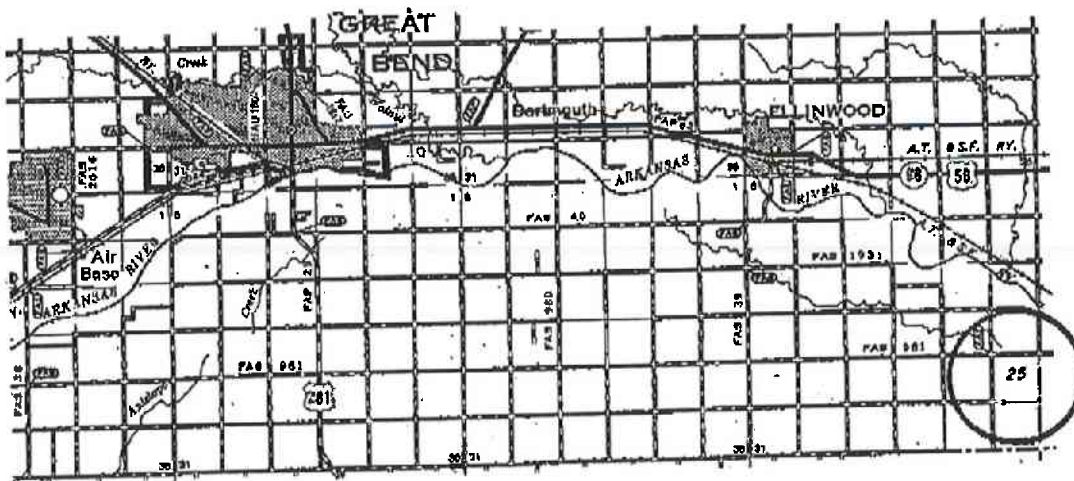
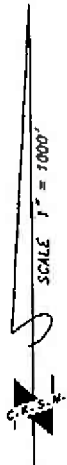
From the intersection of Highway 281 and Highway 156-56-96 in Great Bend, Kansas go 5.0 miles South on Highway 281, then go 14.0 miles East to the NW. corner of Section 25, then go 0.31 miles East to a flagged fence, then go 0.08 miles South to location.



Notes:

1. Set iron rod at location site.
2. All flagging Red & Yellow.
3. Overhead power available at N. & W. lines, Sec. 25.
4. Kansas One Call System Inc. should be notified before excavation (1-800-344-7233).
5. CAUTION: Various pipelines in Sec. 25.
6. Contact landowner for best access.
7. Drillsite area will require approximately a 1' cut/fill.

*Ingress and egress to location as shown on this plot is for usage only and may not be legally opened for public use. Contact landowner, tenant and county road department for access.



* Controlling data is based upon the best maps and photographs available to us and upon a regular section of land containing 640 acres.
 * Approximate section lines were determined using the normal standard of care of oilfield surveys practiced in the state of Kansas. The section corners, which establish the precise section lines, were not necessarily located, and the exact location of the drillsite location in the section is not guaranteed. Therefore, the operator, securing this service and accepting this plot, and all other parties relying thereon agree to hold Central Kansas Oilfield Services, Inc., its officers and employees harmless from all losses, costs and expenses and said entities released from any liability from incidental or consequential damages.
 * Elevations derived from National Geodetic Vertical Datum.

Date May 1, 2014