

GENE

FRANCIS VONFELDT

GREAT GUNS

Radiation Guard Log

MARKED
COPY

FILE NO. _____ COMPANY T & D OIL COMPANY

WELL ROHLEDER NO. 1

FIELD _____

COUNTY ELLIS STATE KANSAS

LOCATION: _____ OTHER SERVICES _____

NE-NW-SW

SEC 27 TWP 14S RGE 16W

Permanent Datum GROUND LEVEL Elev. 1847 Elevations: KB 1852

Log Measured from KELLY BUSHING 5Ft. Above Permanent Datum DF --

Drilling Measured from KELLY BUSHING GL 1847

Date	1-8-81	GAMMA RAY	NEUTRON	GUARD	CALIPER
Run No.	ONE	ONE	ONE	ONE	ONE
Depth-Driller	3387	3387	3387	3387	3387
Depth-Logger	3386	3386	3386	3386	3386
Bottom Logged Interval	3377	3385	3381	3374	
Top Logged Interval	2800	2800	2800	2800	2800
Casing - Driller	@	@	8-5/8 @	193	@
Casing - Logger				193	
Flow Line			7-7/8		
Type Fluid in Hole			STARCH		
			SALT CLAY		
Density and Viscosity			10.2	44	
Fluid Flow Lines		cc	cc	6.4	12.6cc
Sample of Sample				FLOW LINE	
Pressure - Man. Temp.	@	°F	@	°F	.15 @ 58 °F
Pressure - Man. Temp.	@	°F	@	°F	.112 @ 58 °F
Pressure - Man. Temp.	@	°F	@	°F	.225 @ 58 °F
Sample of Port and Base				CHARTS	
Pressure - BHT	@	°F	@	°F	.083 @ 104 °F
Time Since Circ.				2 HOURS	
Man. Port Temp. Dev. P.		°F		°F	104 °F
Flow No. and Location				25	HAYS
Recorded By				P. TAYLOR	
Checked By				NE. ROBBEN	

REMARKS

Changes in Mud Type or Additional Samples					Scale Changes				
Date	Sample No.				Type Log	Depth	Scale Up Hole	Scale Down	
	1-8-81	ONE							
Depth-Driller	3837								
Type Fluid in Hole	STARCH								
	SALT CLAY								
Dens.	Viac.	10.2	44						
pH	Fluid Loss	6.4	12.6	cc					
Source of Sample	FLOW LINE								
					Equipment Data				
Rm @ Meas. Temp.	.15 @ 58 °F	@	°F	Run. No.	Tool Type	Pad Type	Tool Position	Other	
Rmf @ Meas. Temp.	.112 @ 58 °F	@	°F						
Rmc @ Meas. Temp.	.225 @ 58 °F	@	°F						
Source Rmf	Rmc	CHARTS							
Rm @ BHT	.083 @ 104 °F	@	°F						
Rmf @ BHT	.062 @ 104 °F	@	°F						
Rmc @ BHT	.125 @ 104 °F	@	°F						

EQUIPMENT DATA

Gamma Ray				Neutron			
Run No.	ONE			Run No.	ONE		
Tool Model No.	GCN56XU4A			Log Type	NEU-NEU		
Diameter	3.5 IN.			Tool Model No.	GCN56XU4A		
Detector Model No.	A. P. A.			Diameter	3.5 IN.		
Type	SCINTILLATION			Detector Model No.	H. S. P.		
Length	3 IN.			Type	PROPORTIONAL		
Distance to N. Source	107 IN.			Length	6 IN.		
				Source Model No.	SEALED		
				Serial No.	241		
				Spacing	17 IN.		
				Type	AM BE		
				Strength	3 CURRIE		

General

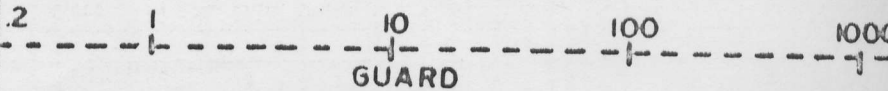
Holst Truck No.	25		
Instrument Truck No.	25		
Tool Serial No.	2001		

LOGGING DATA

General				Gamma Ray				Neutron			
Run No.	Depths		Speed Ft./Min.	T. C. Sec.	Sens. Settings	Zero Div. L or R	API G.R. Units per Log Div.	T. C. Sec.	Sens. Settings	Zero Div. L or R	API N. Units per Log D.
	From	To									
ONE	3386	2800	24	3	80	1 L	10 P. D.	2	23	1 R	100 P.

GAMMA RAY

10	110
110	210



NEUTRON

300	230
-----	-----

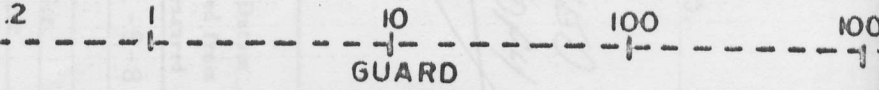
CALIPER

2 HOLES @ 940
 SCRUBBED 350 SACKS
 OF CEMENT
 TO 1500'
 CEMENT DID NOT CIRC
 PRESSURED UP TO

GAMMA RAY

10 110

110 210



300

23

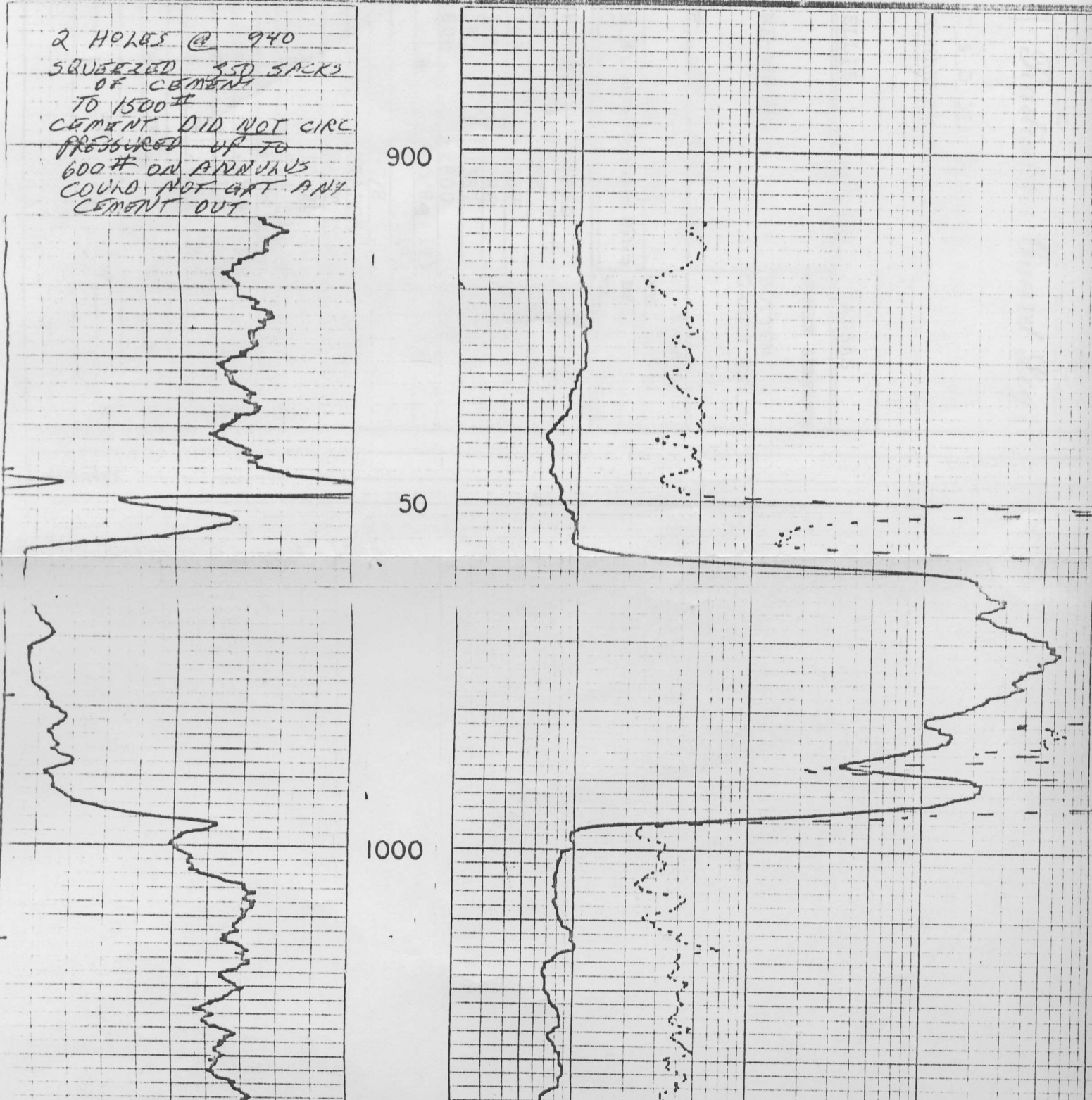
CALIPER

2 HOLES @ 940
SQUEEZED 350 SACKS
OF CEMENT
TO 1500#
CEMENT DID NOT CIRC
PRESSURED UP TO
600# ON ARRIVAL
COULD NOT GET ANY
CEMENT OUT

900

50

1000



1000

50

Topch 2

50

2900

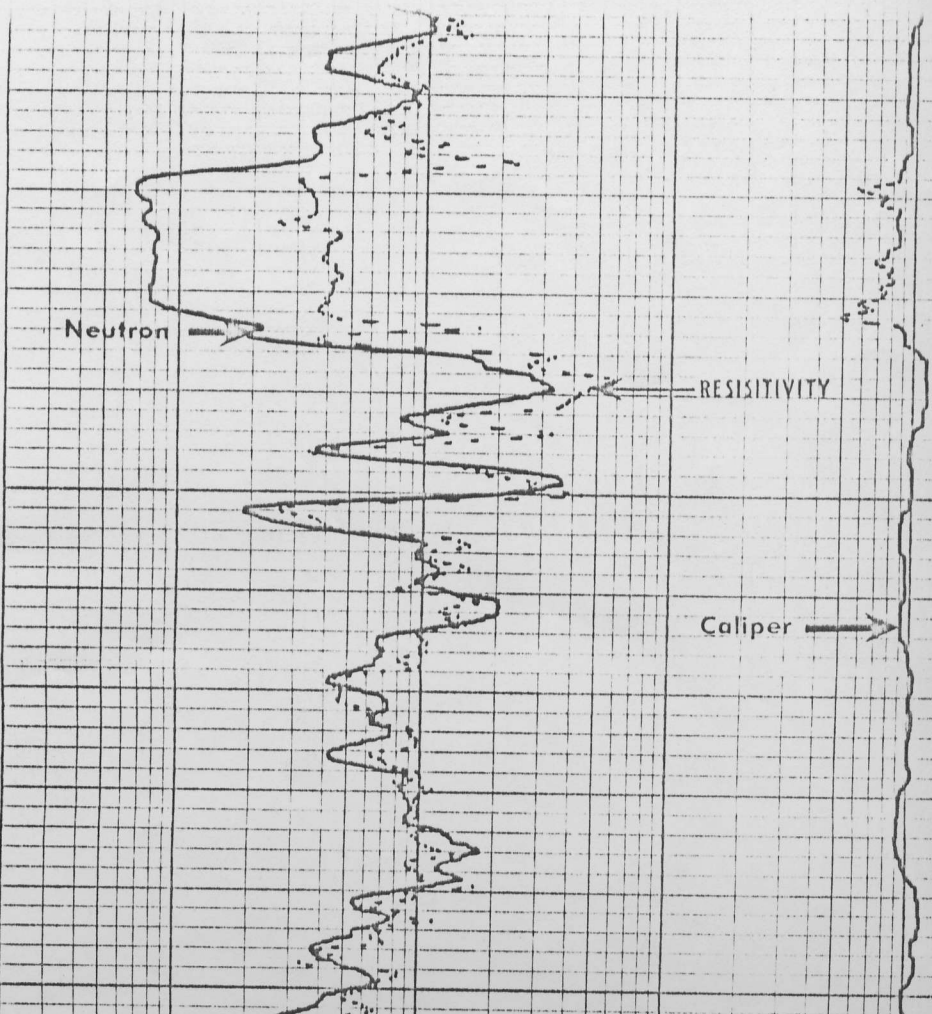
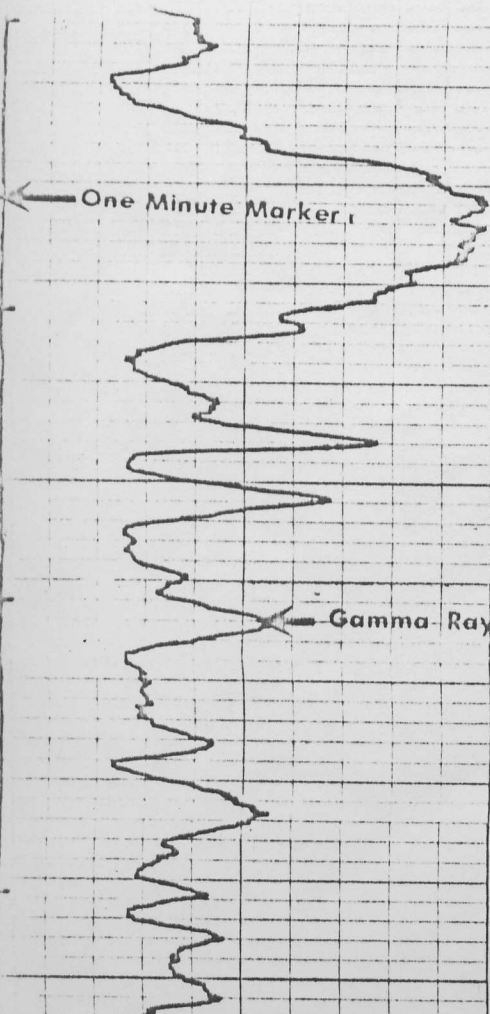
Neutron

RESISTIVITY

Caliper

One Minute Marker

Gamma-Ray



Торчок

Neutron

RESISTIVITY

50

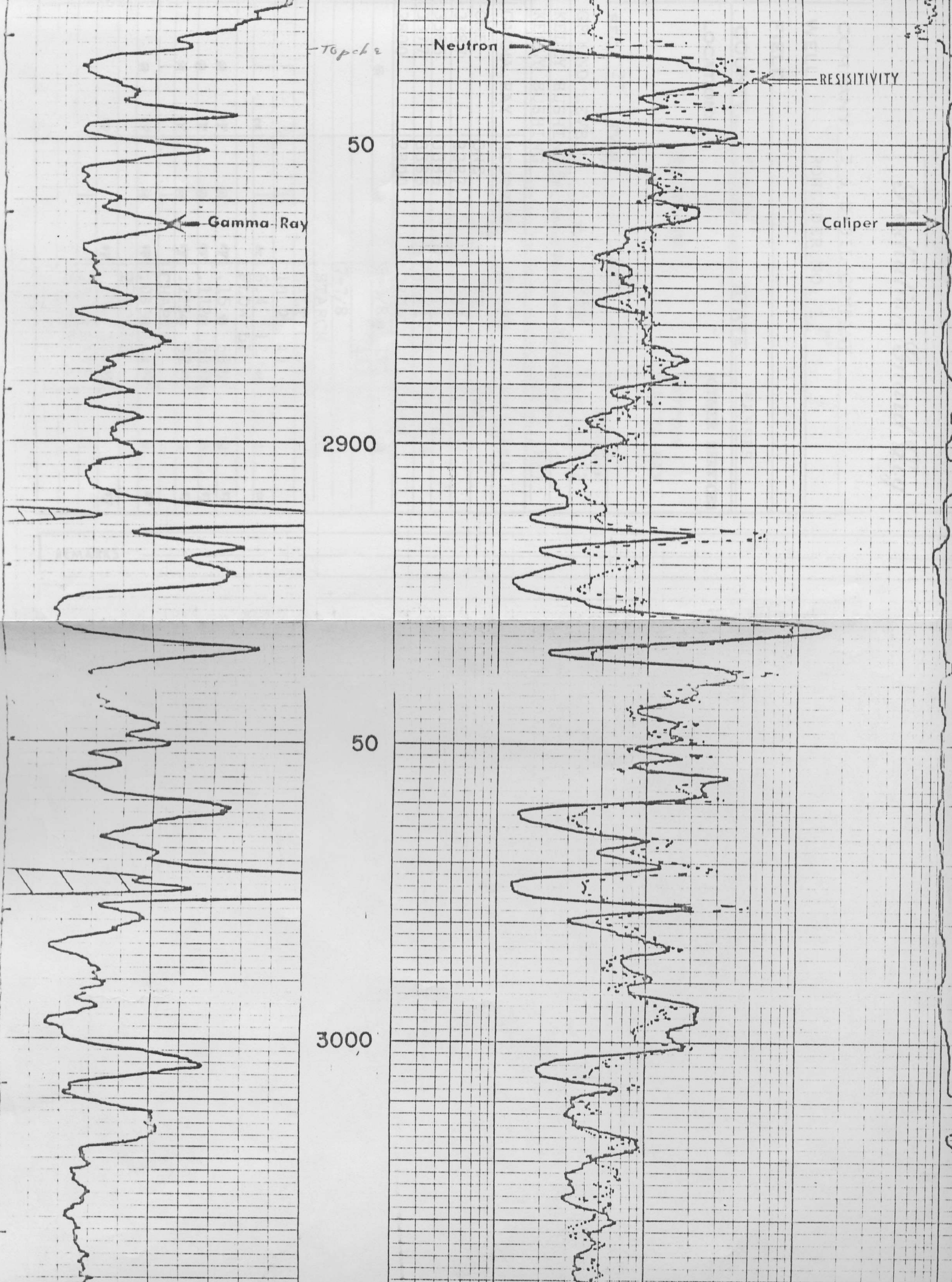
Gamma-Ray

Caliper

2900

50

3000



3000

50

HEEBNER SHALE 3055-1208

TORONTO 3075-1223

3100

K-KC 3104-1252

3109-10
JULY 1989

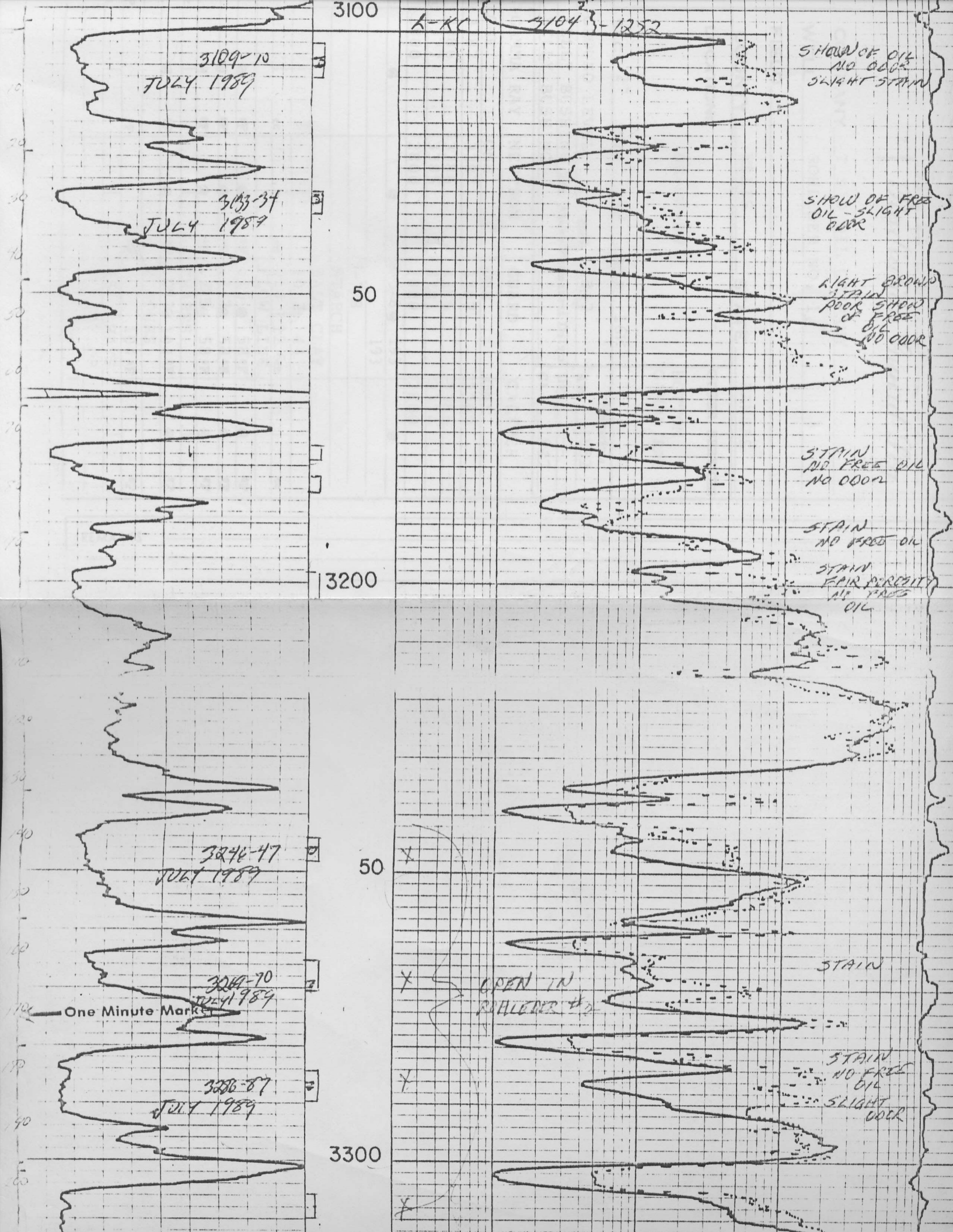
3133-34
JULY 1989

50

SHOW OF OIL
NO ODR
SLIGHT STAIN

SHOW OF FREE
OIL - SLIGHT
ODR

RIGHT BROWD
STAIN
POOR SHOW
OF FREE
OIL
NO ODR



3100

K-KC 3104-1252

3109-10
JULY 1989

SHOW OF OIL
NO ODOOR
SLIGHT STAIN

3133-34
JULY 1989

SHOW OF FREE
OIL - SLIGHT
ODOOR

50

LIGHT BROWN
STAIN
POOR SHOW
OF FREE
OIL
NO ODOOR

STAIN
NO FREE OIL
NO ODOOR

STAIN
NO FREE OIL

3200

STAIN
FAIR PERCENT
NO FREE
OIL

3246-47
JULY 1989

50

STAIN

One Minute Marker

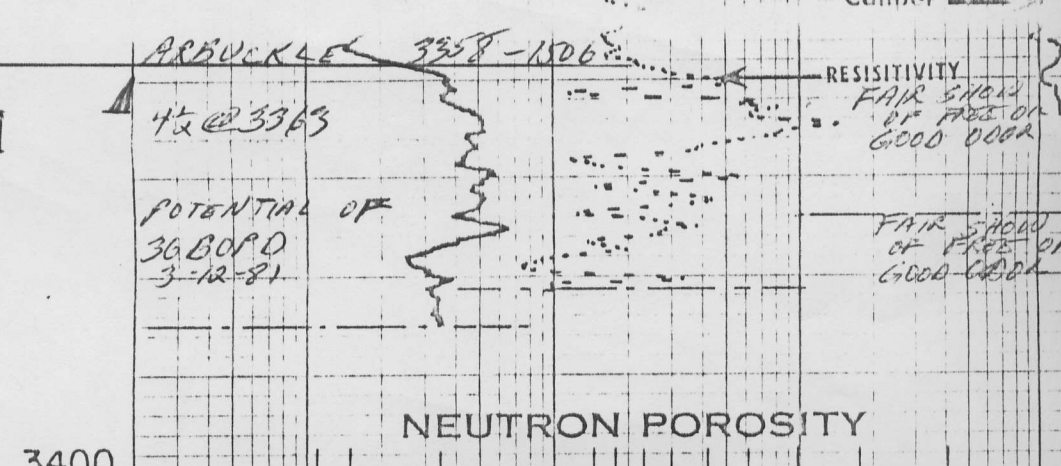
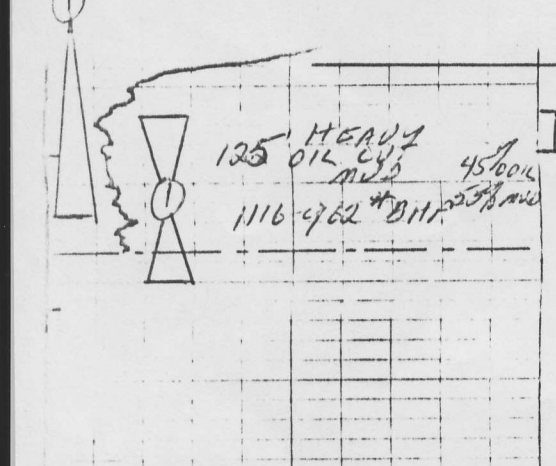
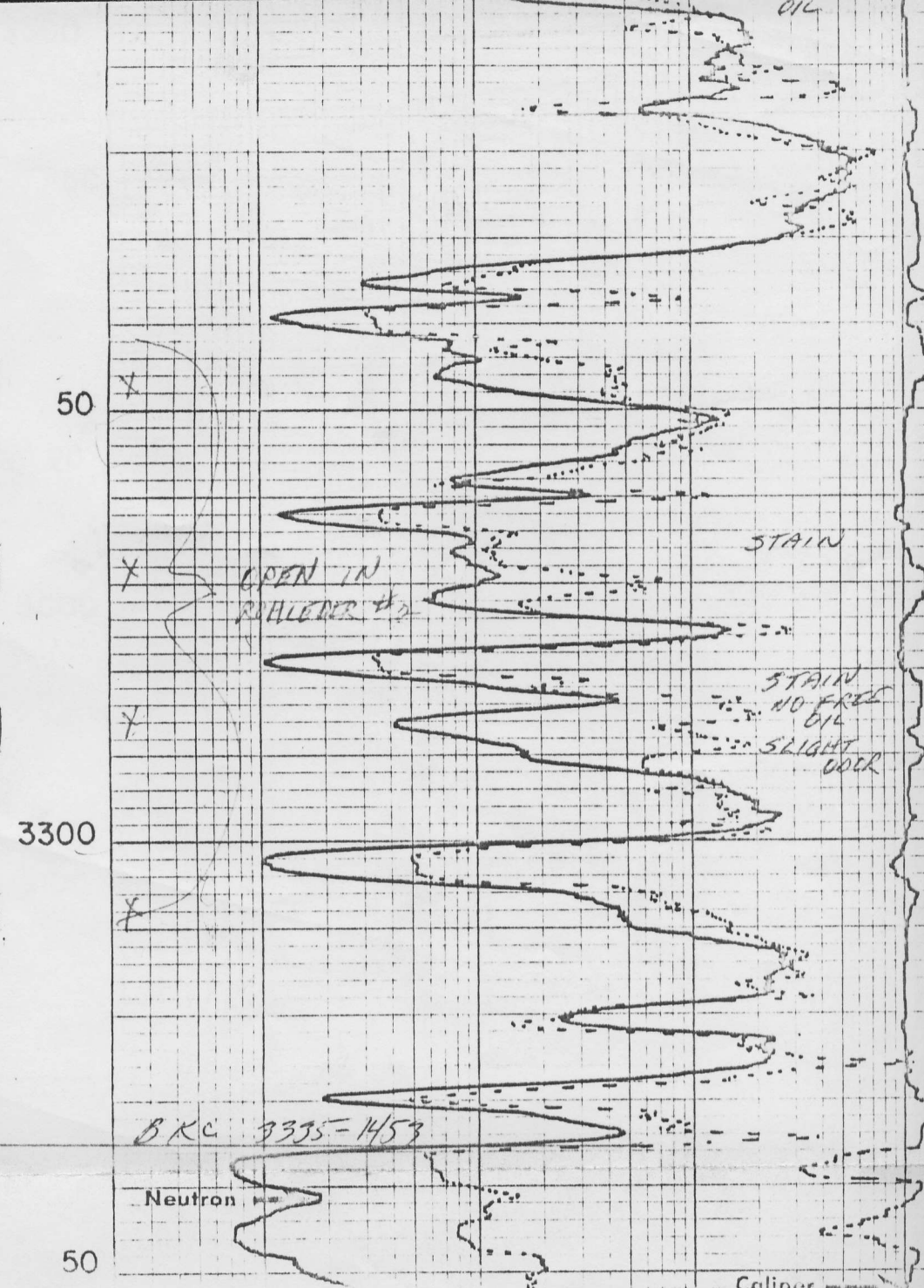
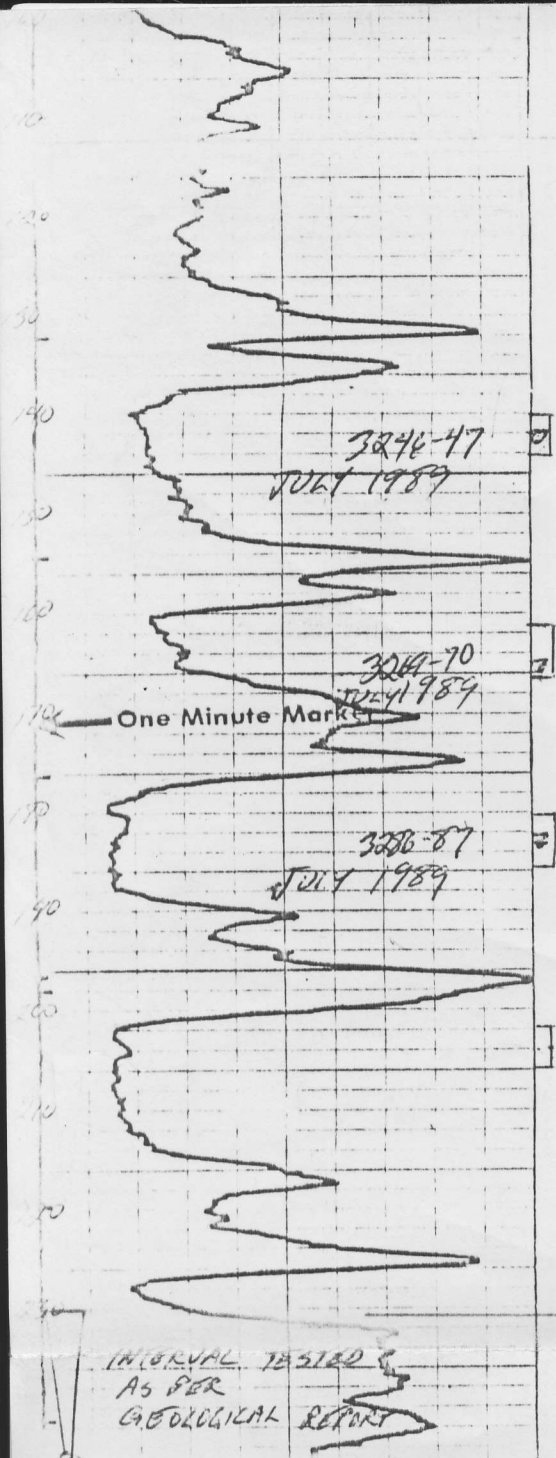
3264-70
JULY 1989

OPEN IN
ROLLERS #2

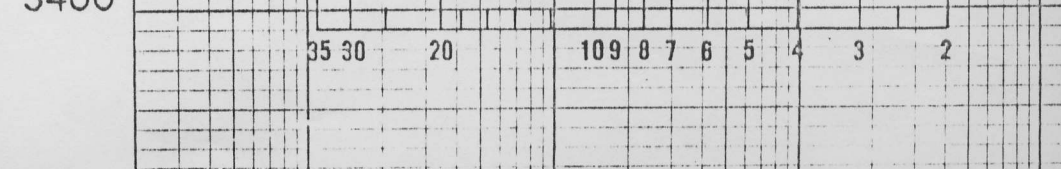
3286-87
JULY 1989

STAIN
NO FREE
OIL
SLIGHT
ODOOR

3300



2-4-83
500 GAL 15% DEM
1 GAL INHIBITOR



1116-962 # 8117

POTENTIAL OF
36 BOPD
3-12-81

FAIR SHOW
OF FREE OIL
GOOD GRAB

2-4-83

500 GAL 15% OBM
1 GAL INHIBITOR
150 # POTASSIUM CHROMATE
1 BBL A MINUTE
650 # MAX
100 # PRESSURE 10 MIN
AFTER ISP.

3400

NEUTRON POROSITY



PEN SPACING

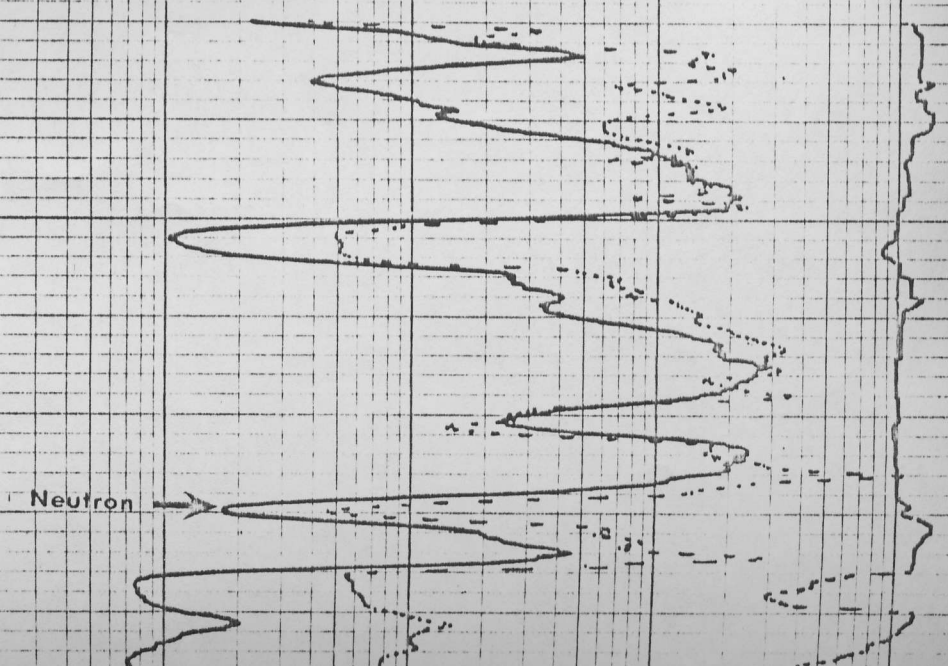
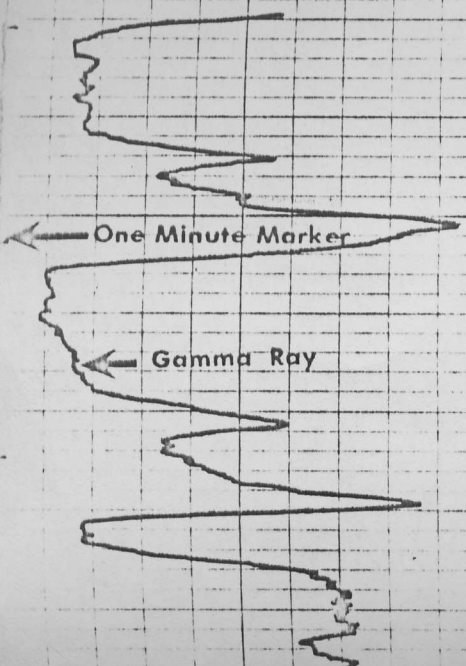
RESISTIVITY

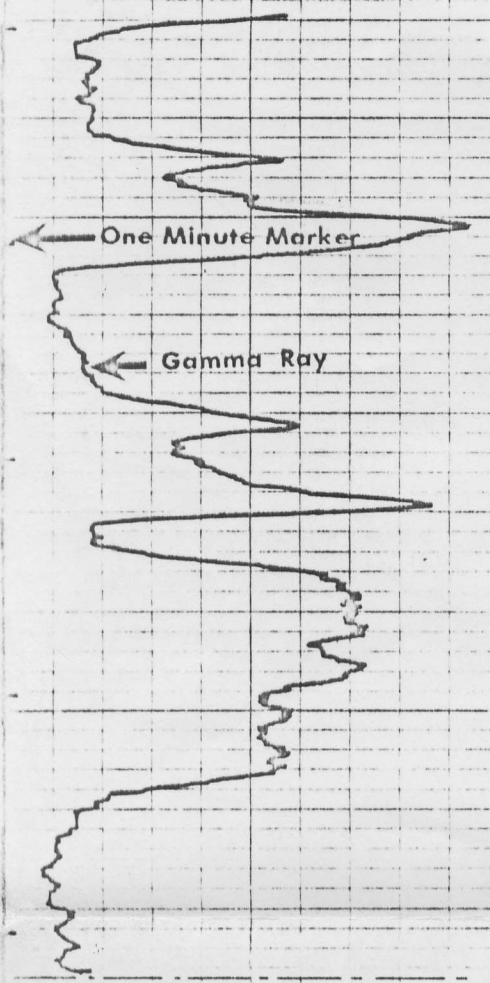
Neutron

Gamma Ray

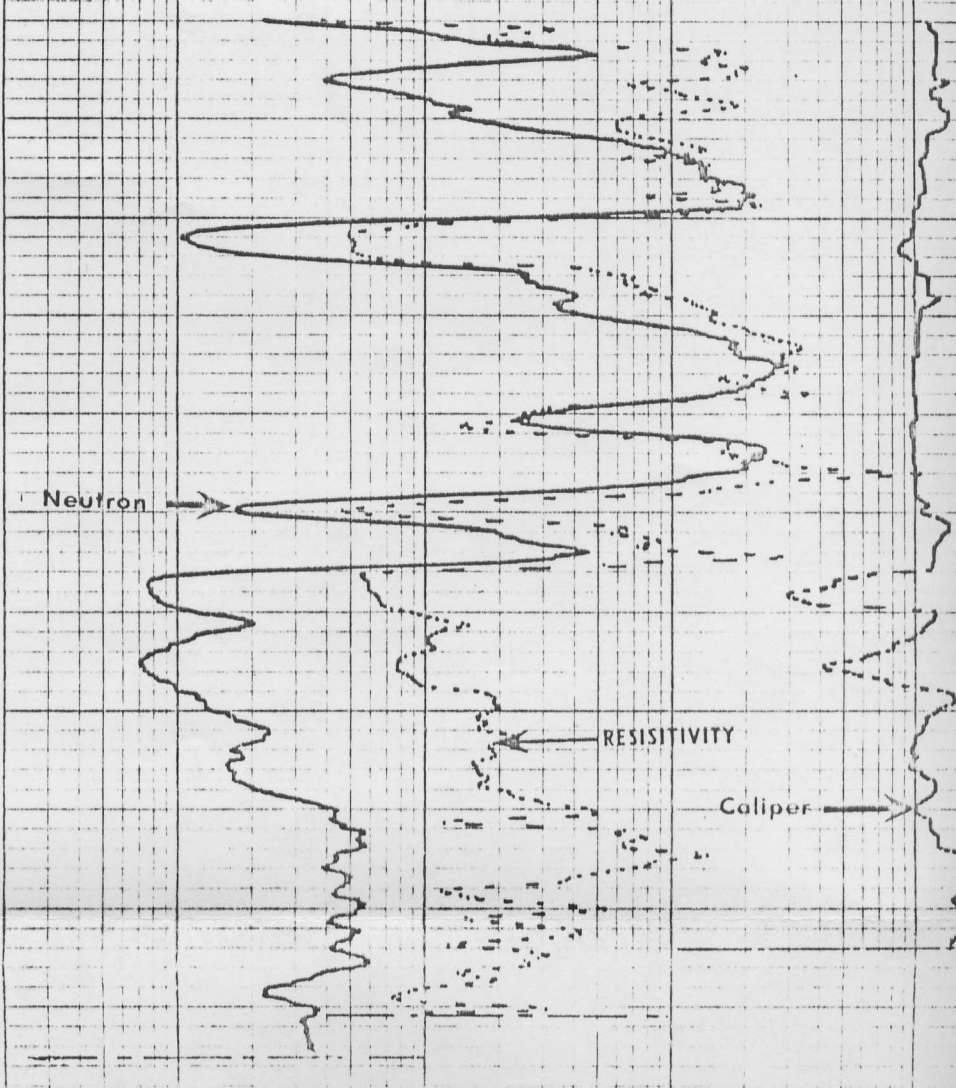
REPEAT SECTION

3300





3300



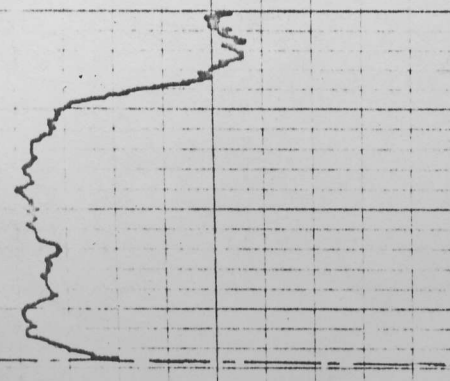
50

NEUTRON POROSITY

35 30 20 10 9 8 7 6 5 4 3 2

3400

BOTTOM GAMMA RAY



50

3400

NEUTRON POROSITY

3400

55 30 20 10 9 8 7 6 5 4 3 2

BOTTOM GAMMA RAY

50

3400

GAMMA RAY

.2 1 10 100 1000
GUARD

10 110

NEUTRON

110 210

300

2300

15 0
CALIPER

COMPANY T & D OIL COMPANY

T.D. DRILLER 3387

WELL ROHLER NO. 1

T.D. REACHED 3386

LOCATION SEC. 27-14S-16W

T.D. LOGGED 3385

COUNTY ELLIS, KS

DATE 1-8-81