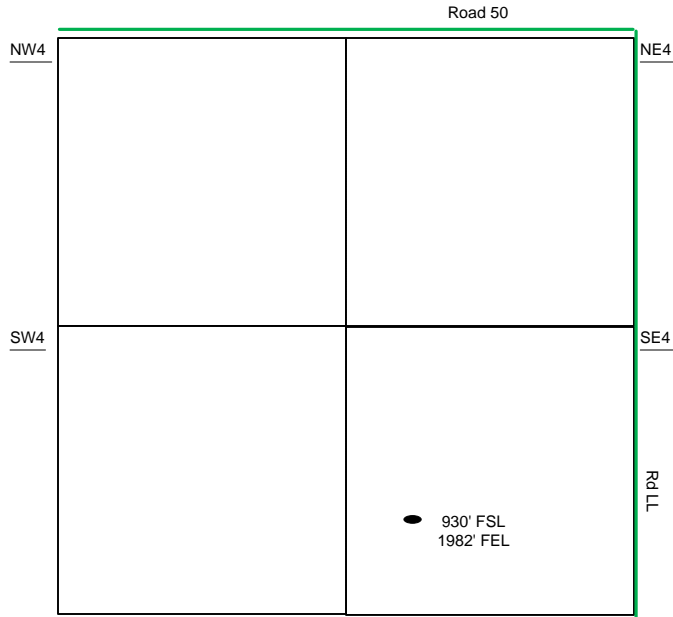
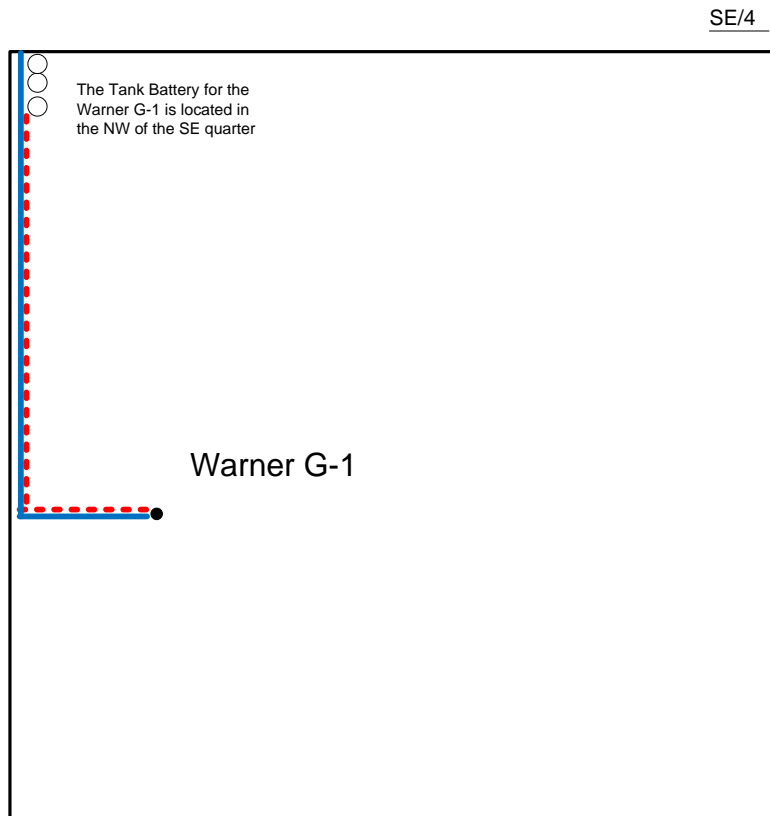


Proposed Plan of Construction

Warner G-1  
Sec 26 T27S-R33W  
Haskell County, KS



Sec 26 – T27S – R33W



Proposed Details of  
SE/4 Sec 26 – T27S – R33W

Note-Drawing **Not** to Scale

Proposed Site Diagram  
Warner G-1  
May 6, 2014