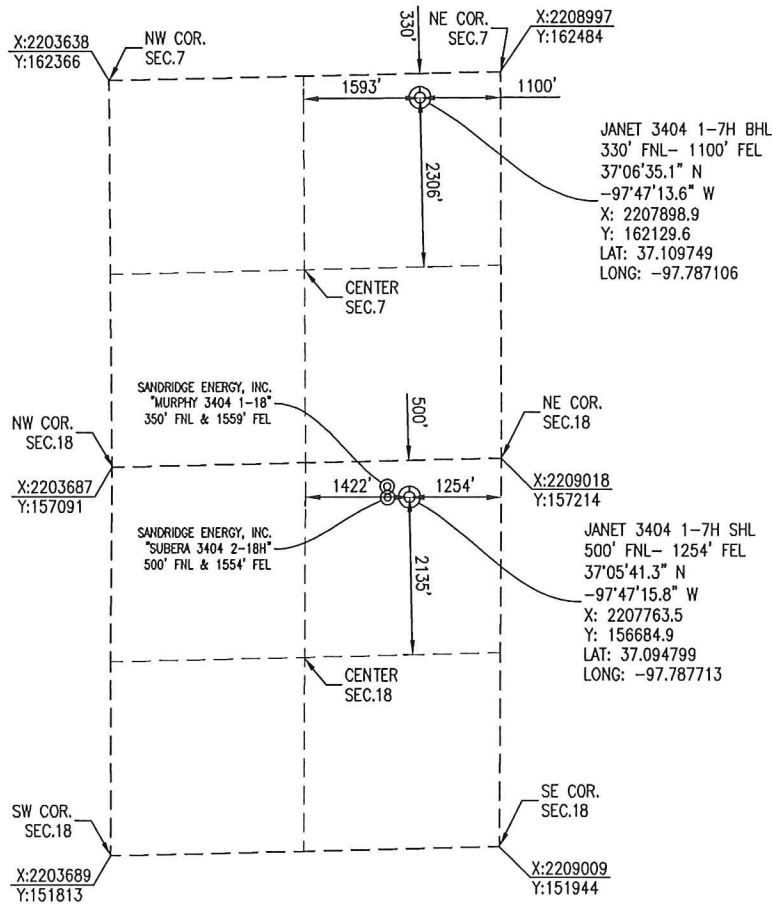


SUMNER COUNTY, KANSAS
 500' FNL- 1254' FEL SECTION 18 TOWNSHIP 34S RANGE 04W 6TH P.M.



BOTTOM HOLE INFORMATION PROVIDED BY OPERATOR LISTED AND CORNER COORDINATES ARE TAKEN FROM POINTS SURVEYED IN THE FIELD.



OPERATOR: SANDRIDGE ENERGY, INC.

WELL NO: 1-7H

ELEVATION:
 1238' GR. AT STAKE

LEASE NAME: JANET 3404

TOPOGRAPHIC & VEGETATION: LOCATION FELL IN A FIELD

GOOD DRILL SITE: YES REFERENCE STAKES OR ALTERNATE LOCATION STAKES SET: NONE

BEST ACCESSIBILITY TO LOCATION: NORTH OR EAST LINE

DISTANCE & DIRECTION FROM HWY JCT OR TOWN: FROM THE JCT. OF KS-44 & S BLACKSTONE RD (±13.6 MILES EAST OF ANTHONY, KS) TRAVEL SOUTH ON S BLACKSTONE RD FOR ±4.0 MILES TO THE NORTHEAST CORNER OF SECTION 18, T34S-R04W.



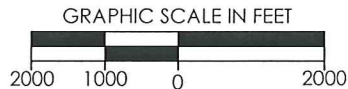
(THE FOLLOWING INFORMATION WAS GATHERED USING A GPS RECEIVER ACCURACY ±2-3 METERS)

GPS DATUM: NAD-27	STATE PLANE COORDINATES:
LAT: 37.094799	ZONE: KS-SOUTH NAD-27
LONG: -97.787713	X: 2207763.5
	Y: 156684.9

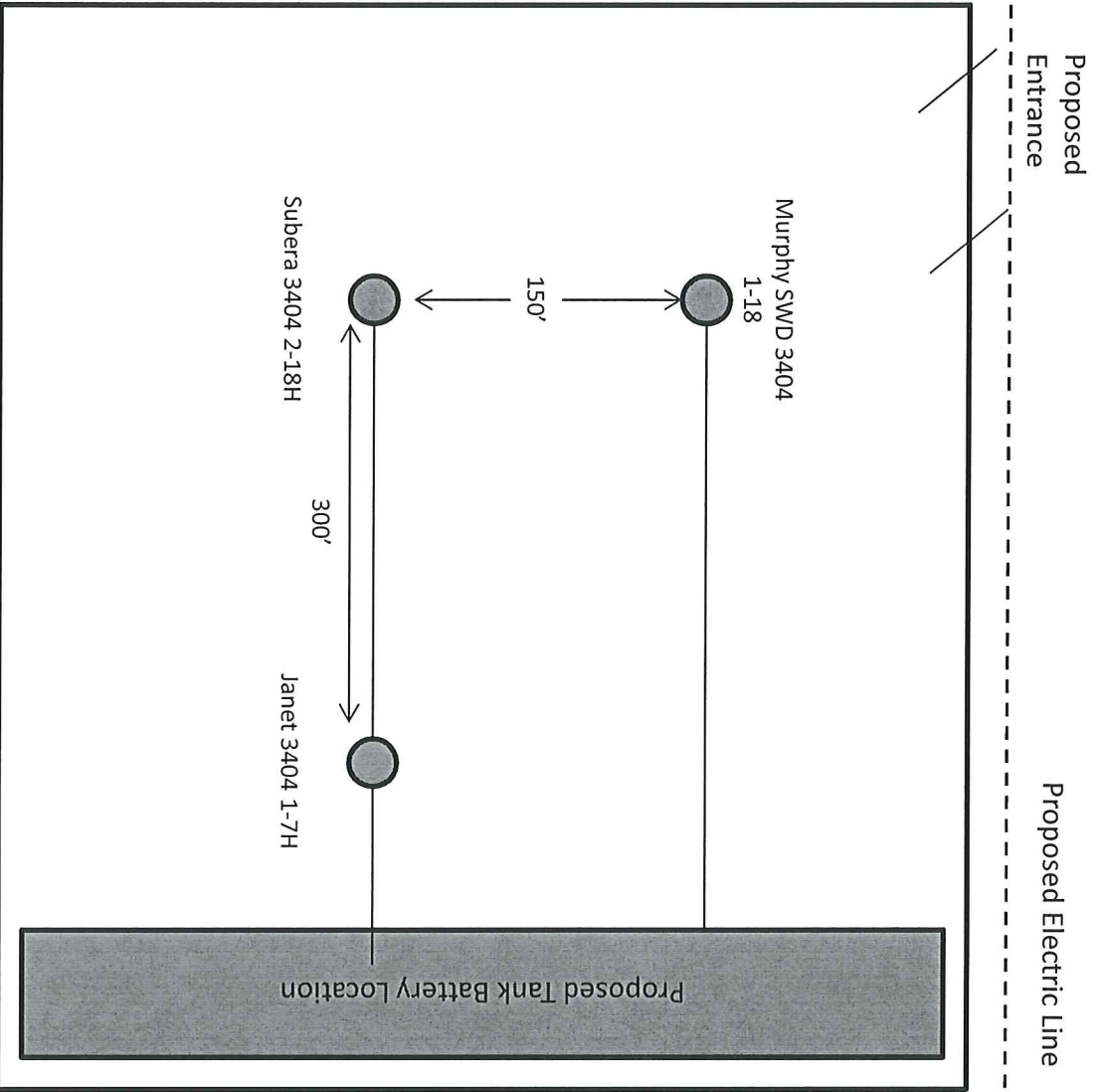
DATE STAKED: 4-03-2014

GENERAL NOTES:

THE TIES AND FOOTAGES SHOWN ON THIS PLAT ARE FROM LINES OF OCCUPATION FROM A SURVEY MADE ON THE GROUND AND / OR BEARING AND DISTANCES FROM THE GENERAL LAND OFFICE PLAT OF THE AREA SHOWN AND MAY NOT BE THE ACTUAL PROPERTY CORNERS. THIS PLAT DOES NOT REPRESENT A TRUE BOUNDARY SURVEY. DRILL SITE CONDITION DETERMINATIONS WERE MADE BY SANDRIDGE ENERGY INC. REPRESENTATIVES.



REVISION		SandRidge	
△	MOVED SHL (4-03-2014)	"JANET 3404 1-7H" PART OF THE NE1/4 OF SECTION 18, T-34-S, R-04-W PROPOSED DRILL SITE SUMNER COUNTY, KANSAS	
SCALE: 1" = 2000'		DRAWN BY: MF SHEET NO.: 1 OF 4	
PLOT DATE: 04-03-2014			



Janet 3404 1-7H

Sumner County

Unit Description:

E/2 of 7-34S-4W

W/2 of 8-34S-4W

Surface Owner:

SandRidge Expl. and Prod., LLC

123 Robert S Kerr Ave

Oklahoma City, OK 73102

