

KEVIN L. KESSLER
CONSULTING PETROLEUM GEOLOGIST
(316) 522-7338

OPERATOR : MULL DRILLING COMPANY INC.
LEASE : RUFENACHT WELL # : 1 - 11
LOCATION : 1966' FNL & 1642' FEL
SEC: 11 TWP : 17 S RGE : 24 W
COUNTY : NESS STATE : KANSAS

ELEVATION
KB : 2488
GL : 2480
 MEASUREMENTS FROM
KB

CONTRACTOR : DUKE DRILLING RIG # 8
COMM : 02 / 06 / 2014 COMP : 02 / 16 / 2014
RTD : 4580 LOG TD : 4584
SAMPLES SAVED FROM : 3700 TO : RTD
GEOLOGICAL SUPERVISION FROM : 3700 TO : RTD
MUD UP : 3500 TYPE MUD : CHEMICAL

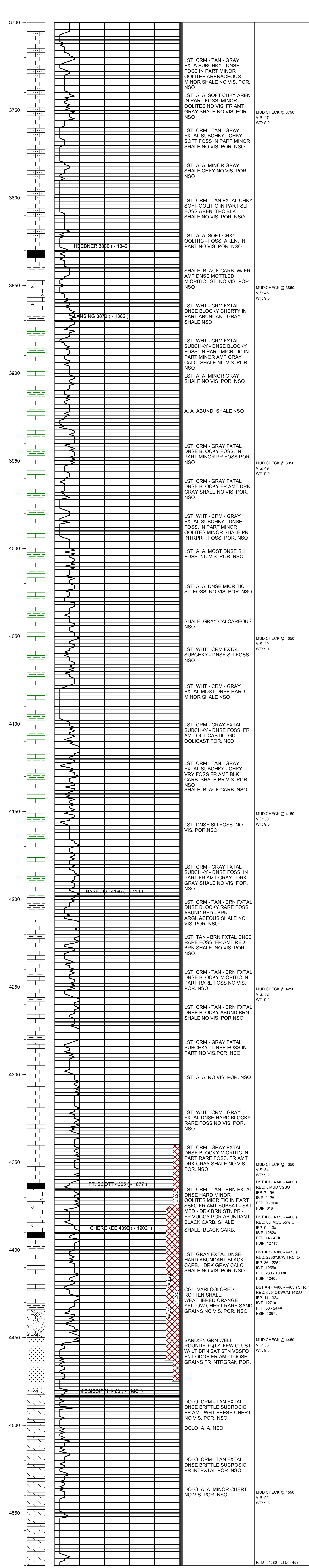
CASING RECORD
SURFACE :
8 5/8" @ 219'
PRODUCTION :
 .

ELECTRICAL SURVEYS :
 CDL/CNL

FORMATION	TOP	SAMPLE	DATUM	TOP	LOG	DATUM	STRUCT. COMP.
HEEBNER	3830	- 1342	3830	- 1342			+ 07
LANSING	3870	- 1382	3870	- 1382			+ 09
BASE / KC	4198	- 1710	4198	- 1710			+ 09
FORT SCOTT	4365	- 1877	4365	- 1877			+ 03
CHEROKEE	4390	- 1902	4390	- 1902			+ 02
MISSISSIPPI	4483	- 1995	4483	- 1995			+ 12

REFERENCE WELL FOR STRUCTURAL COMPARISON :

MULL # 1 - 11 SMITH - RUFENACHT SEC 11 - T 17 S - R 24 W NESS COUNTY KANSAS



COMMENTS:

DUE TO MARGINAL DST RESULTS & POOR LOG CALCULATIONS

THIS WELL WAS PLUGGED AS

D & A

KEVIN L. KESSLER