



Scale 1:240 Imperial

Well Name: French 1-27
 Surface Location: 330' FSL _1920' FEL Sec 27 - 21S- 17W
 Bottom Location:
 API: 15-145-21751-00-00
 License Number:
 Spud Date: 4/15/2014 Time: 7:15 PM
 Region: Pawnee County
 Drilling Completed: 4/22/2014 Time: 7:15 AM
 Surface Coordinates: Y = 555245 & X = 1806117
 Bottom Hole Coordinates:
 Ground Elevation: 2032.00ft
 K.B. Elevation: 2045.00ft
 Logged Interval: 3270.00ft To: 4290.00ft
 Total Depth: 4265.00ft
 Formation: Arbuckle
 Drilling Fluid Type: Chemical/Fresh Water Gel

OPERATOR

Company: Shelby Resources, LLC
 Address: 445 Union Blvd, Suite 208
 Lakewood, CO 80228

Contact Geologist: Janine Sturdavant
 Contact Phone Nbr: 303-907-2209 / 720-274-4682
 Well Name: French 1-27
 Location: 330' FSL _1920' FEL Sec 27 - 21S- 17W API: 15-145-21751-00-00
 Pool: Field: Fort Larned East
 State: Kansas Country: USA

LOGGED BY



Company: Shelby Resources, LLC
 Address: 445 UNION BLVD. Suite 208
 LAKEWOOD, CO. 80228

Phone Nbr: 203-671-6034
 Logged By: Geologist Name: Jeremy Schwartz

NOTES

The Shelby Resources, LLC French #1-27 was drilled to a total depth of 4265', bottoming in the Granite Wash. A TookeDaq gas detector was employed in the drilling of said well.

1 DST was conducted in the Arbuckle which tested only water. The DST report can be found at the top of this log.

Due to the DST results, lack of sample shows and gas kicks, and log analysis it was determined by all parties involved to plug and abandon said well. The dry samples were saved and will be available for further review at the Kansas Geological Society Well Sample Library, located in Wichita, KS.

Respectfully Submitted,
 Jeremy Schwartz
 Geologist

SURFACE CO-ORDINATES

Well Type: Vertical
 Longitude: Latitude:

N/S Co-ord: Y = 555245
E/W Co-ord: X = 1806117

CONTRACTOR

Contractor: Sterling Drilling Co
Rig #: 5
Rig Type: mud rotary
Spud Date: 4/15/2014
TD Date: 4/22/2014
Rig Release:
Time: 7:15 PM
Time: 7:15 AM
Time:

ELEVATIONS

K.B. Elevation: 2045.00ft
K.B. to Ground: 13.00ft
Ground Elevation: 2032.00ft

DATE	DEPTH	ACTIVITY
Saturday, April 19, 2014	3100'	Geologist Jeremy Schwartz on location @2345hrs, DRLG ahead,
Sunday, April 20, 2014	3115' 3550' 3677' 3855'	DRLG ahead through Heebner, Toronto, Douglas, CFS @ 3455', DRLG ahead through Brown Lime, LKC, CFS @ 3550', DRLG ahead, CFS @ 3595', DRLG ahead, CFS @ 3677', DRLG ahead through LKC, Stark Shale, BKC, Conduct Bit Trip, swap PDC for Tri-Cone Button bit
Monday, April 21, 2014	3855' 3917'	DRLG ahead through Conglomerate, Arbuckle, CFS @ 3911', DRLG ahead, CFS @ 3917', DRLG ahead, CFS @ 3929', DRLG ahead, CFS @ 3981', Conduct DST # 1 in Arbuckle
Tuesday, April 22, 2014	3981' 4265' 4265'	Successful Test, DRLG ahead through Arbuckle, CFS @ 4087', CFS @ 4158' CFS @ 4265', Granite wash in 30 & 60" samples. TD @ 4265. Mud pump is broken, trip out to surface, repair pump, TIH, CTCH 1 hour then TOH. Conduct Logging Operations, Issue with Logging truck that could not be repaired on location, new truck on location to conduct logging operations
Wednesday, April 23, 2014	4265'	Logging Operations complete @ 0020hrs Geologist Jeremy Schwartz off location @ 0045hrs

CLIENT:	SHELBY RESOURCES, LLC
WELL NAME:	FRENCH 1-27
LEGAL:	330' RSL & 1920' FEL 27-T21S-R17W
COUNTY:	PAWNEE COUNTY, KS
API:	15-145-21751-00-00
DRLG CONTRACTOR:	STERLING DRILLING CO.
RIG #:	5
DOGHOUSE #:	620-388-5433
TOOLPUSHER:	ALAN LOFTIS
CELL #:	620-388-2736

FORMATION	D&A								D&A				D&A									
	BEREN CORP.								MAGNOLIA PETROLEUM				TOM ALLEN & BUFFALO OIL									
	FRENCH 1-27								WAYNE #1				W.A. HAYES #1				HAYS #1					
	W/2 SE SW SE 27-21S-17W				NE SE NW 27-21S-17W				NE NE SE 28-21S-17W				SW SW SE 28-21S-27W									
KB		2045		KB		2064		KB		2046		KB		2033								
LOG TOPS		SAMPLE TOPS		COMP. CARD		LOG		SMPL.		COMP. CARD		LOG		SMPL.								
DEPTH	DATUM	DEPTH	DATUM	DEPTH	DATUM	CORR.	CORR.	DEPTH	DATUM	CORR.	CORR.	DEPTH	DATUM	CORR.	CORR.							
ANHYDRITE TOP	1047	998	1047	998	1050	1014	-	16	-	16		1020	1013	-	15	-	15					
BASE	1070	975	1070	975	1078	986	-	11	-	11		1050	983	-	8	-	8					
HEEBNER SHALE	3425	-1380	3424	-1379	3448	-1384	+	4	+	5	3420	-1374	-	6	-	5	3415	-1382	+	2	+	3
TORONTO	3442	-1397	3445	-1400	3466	-1402	+	5	+	2	3444	-1398	+	1	-	2	3432	-1399	+	2	-	1
DOUGLAS SHALE	3452	-1407	3452	-1407	3478	-1414	+	7	+	7	3450	-1404	-	3	-	3	3443	-1410	+	3	+	3
BROWN LIME	3512	-1467	3514	-1469	3540	-1476	+	9	+	7	3511	-1465	-	2	-	4	3503	-1470	+	3	+	1
LKC	3522	-1477	3522	-1477	3548	-1484	+	7	+	7	3520	-1474	-	3	-	3	3513	-1480	+	3	+	3
STARK SHALE	3725	-1680	3726	-1681	3750	-1686	+	6	+	5							3720	-1687	+	7	+	6
BKC	3786	-1741	3786	-1741	3810	-1746	+	5	+	5							3784	-1751	+	10	+	10
MARMATON	3796	-1751	3796	-1751	3820	-1756	+	5	+	5							3791	-1758	+	7	+	7
CONGLOMERATE	3855	-1810	3855	-1810							3866	-1820	+	10	+	10	3884	-1851	+	41	+	41
ARBUCKLE	3903	-1858	3905	-1860	3937	-1873	+	15	+	13	3882	-1836	-	22	-	24	3918	-1885	+	27	+	25
REAGAN	4217	-2172	4217	-2172																		
RTD			4265	-2220																		
LTD	4264	-2219			3965	-1901	-	318			3916	-1870	-	349			3970	-1937	-	282		

PROGNOSIS	
ANHYDRITE TOP	1050 995
HEEBNER SHALE	3415 -1370
LKC	3510 -1465
BKC	3776 -1731
ARBUCKLE	3903 -1858

TESTED
DST #1 (3185-3243) 30-45-120-60 820' WTR SIP: 1133-1084#
DST #2 (3584-3606) LANSING C/E

TESTED
DST #1 (3886-3895) OPEN 45MIN 100'M
DST #2 (3886-3916) OPEN 30MIN

TESTED

4.300	-2.255	30-30-30-30 10'M SIP: 40-30#	26 7/8" BLACK SULPHUR WTR
		DST #3 (368 7-3760) LANSING H-J 30-45-30-45 530' WTR SIP: 1321-1321#	



DRILL STEM TEST REPORT

Shelby Resources LLC.

27-21s-17w-Pawnee

2717 Canal Blvd. Hays
Kansas 67601

French 1-27

Job Ticket: 18315

DST#: 1

ATTN: Jeremy Schwartz

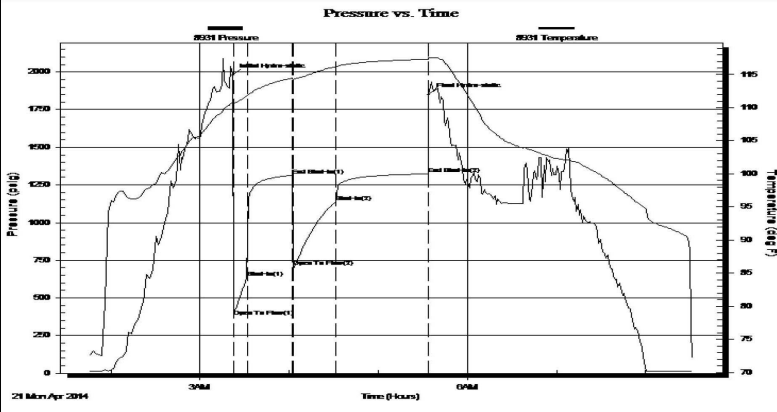
Test Start: 2014.04.21 @ 01:45:00

GENERAL INFORMATION:

Formation: **Arbuckle**
 Deviated: No Whipstock: ft (KB)
 Time Tool Opened: 03:22:30
 Time Test Ended: 08:31:30
 Test Type: Conventional Bottom Hole (Initial)
 Tester: Dustin Ellis
 Unit No: 3315-Great Bend-60
 Interval: **3970.00 ft (KB) To 3981.00 ft (KB) (TVD)**
 Total Depth: 3981.00 ft (KB) (TVD)
 Reference Elevations: 2045.00 ft (KB)
 2032.00 ft (CF)
 Hole Diameter: 7.88 inches Hole Condition: Fair
 KB to GR/CF: 13.00 ft

Serial #: 8931 Outside
 Press@RunDepth: 1138.77 psig @ 3976.00 ft (KB) Capacity: 5000.00 psig
 Start Date: 2014.04.21 End Date: 2014.04.21 Last Calib.: 2014.04.21
 Start Time: 01:45:00 End Time: 08:31:30 Time On Btm: 2014.04.21 @ 03:22:00
 Time Off Btm: 2014.04.21 @ 05:34:00

TEST COMMENT: 1st Open 10 minutes Strong building blow built to the bottom of a 5 gallon bucket of water in 1.5 minutes.
 1st Shut in 30 minutes No blow back
 2nd Open 30 minutes Strong building blow built to the bottom of a 5 gallon bucket of water in 1.5 minutes.
 2nd Shut in 60 minutes No blow back



PRESSURE SUMMARY

Time (Min.)	Pressure (psig)	Temp (deg F)	Annotation
0	1979.46	110.91	Initial Hydro-static
1	377.85	110.58	Open To Flow (1)
10	636.75	111.73	Shut-In(1)
40	1313.43	114.47	End Shut-In(1)
41	709.56	114.24	Open To Flow (2)
70	1138.77	116.22	Shut-In(2)
132	1323.25	117.35	End Shut-In(2)
132	1849.29	117.55	Final Hydro-static

Recovery

Length (ft)	Description	Volume (bbl)
2363.00	Water 100%	29.76
0.00	Chlorides 46,000-.3ohms@56degrees	0.00

Gas Rates

	Choke (inches)	Pressure (psig)	Gas Rate (Mcf/d)

Superior Testers Enterprises LLC

Ref. No: 18315

Printed: 2014.04.21 @ 21:46:13

ROCK TYPES

Congl	Lmst fw<7	shale, gry	shale, red	Ignebasic
Dolprim	shale, grn	Carbon Sh	Ss	

ACCESSORIES

MINERAL

Varicolored chert

FOSSIL

Bioclastic or Fragmental
 Fossils < 20%

STRINGER

Dolomite
 Sandstone

TEXTURE

Chalky

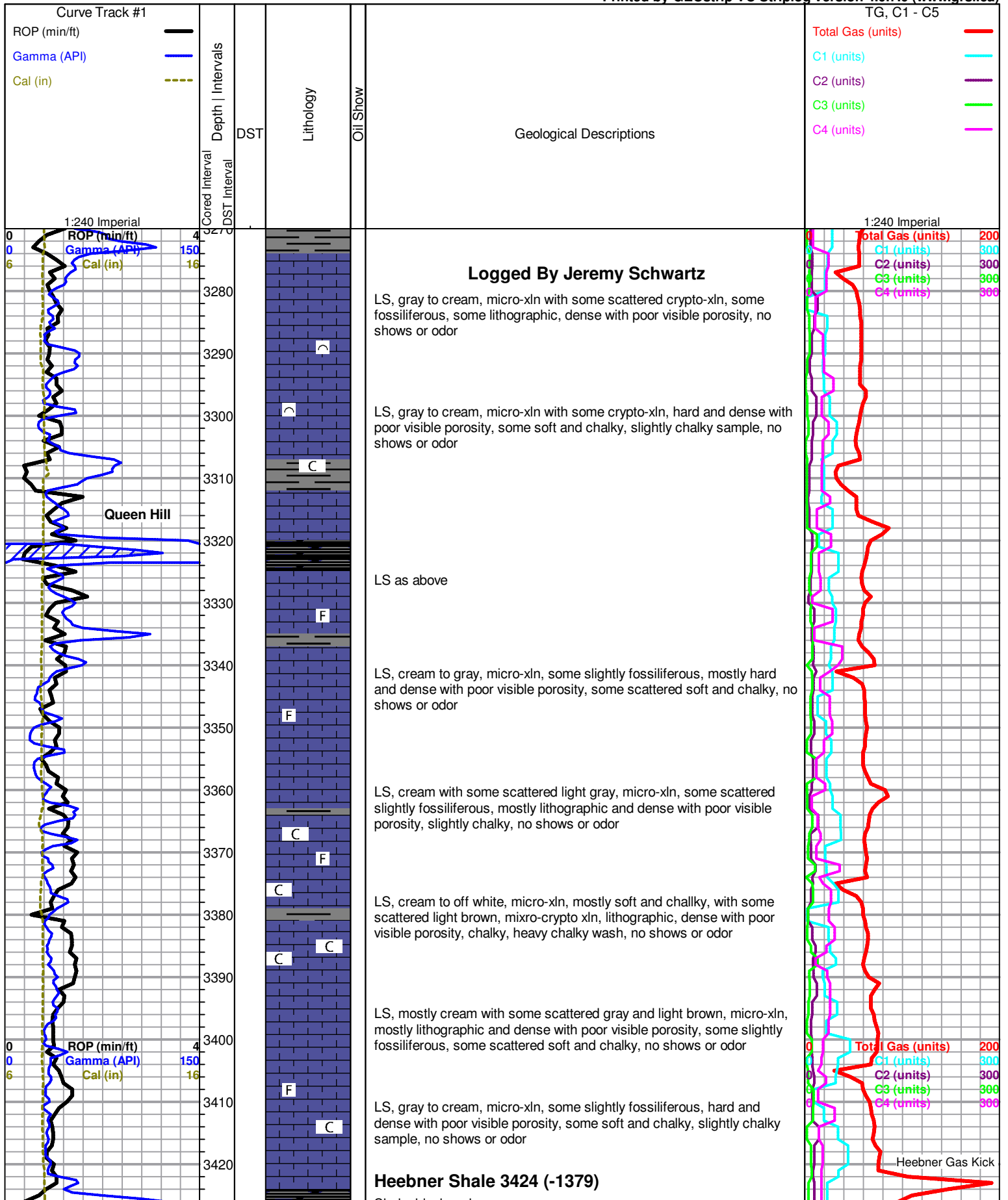
OTHER SYMBOLS

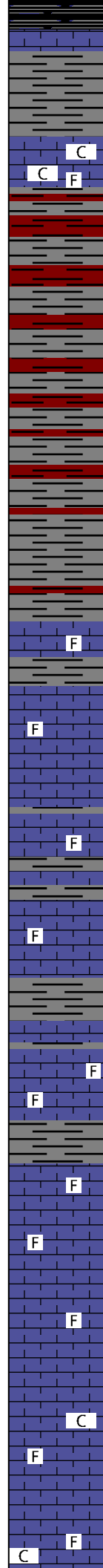
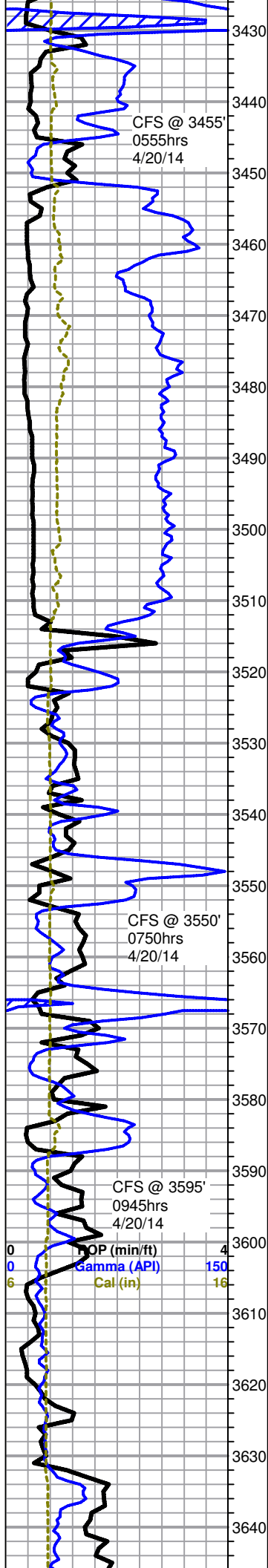
Oil Show

- Good Show
- Fair Show
- Poor show
- Spotted or Trace
- Questionable Stn
- Dead Oil Stn
- Fluorescence
- * Gas

DST

- DST Int
- DST alt





Shale, black carbonaceous

Toronto 3445 (-1400)

LS, cream to off-white with some gray, some slightly fossiliferous, mostly lithographic and dense with poor visible porosity, some soft and chalky, also with abundant gray clay, chalky sample, no shows or odor

Douglas Shale 3452 (-1407)

Shale, mixed gray and red, mostly soft and waxy, some silty

Shale as above

As above, mostly gray shale, soft and waxy

Brown Lime 3514 (-1469)

LS, brown, micro-xln, slightly fossiliferous, hard and dense with poor visible porosity, no shows or odor

Lansing 3522 (-1477)

LS, cream to off-white with some scattered gray, some slightly fossiliferous, mostly lithographic and dense with poor visible porosity, no shows or odor

LS, cream to light gray with some scattered gray mottled, micro-xln, some fossiliferous, some lithographic, dense with poor visible porosity, no shows or odor

LS, cream to off white, micro-xln, some scattered slightly fossiliferous, mostly lithographic and dense with poor visible porosity, no shows or odor

LS, cream to gray, micro-xln, some fossiliferous, some lithographic, dense with poor visible porosity, no shows or odor

LS, cream with some scattered light gray and light brown, micro-xln, some fossiliferous, some lithographic, scattered very slightly sub-oolitic, dense with poor visible porosity, no shows or odor

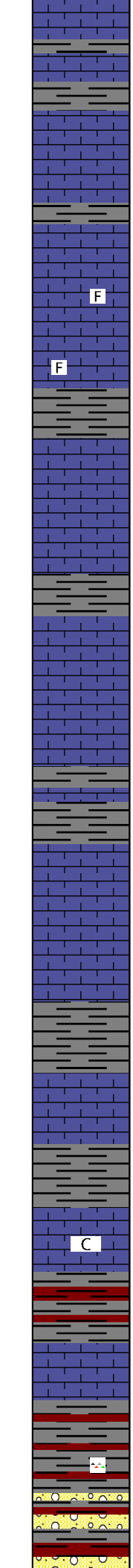
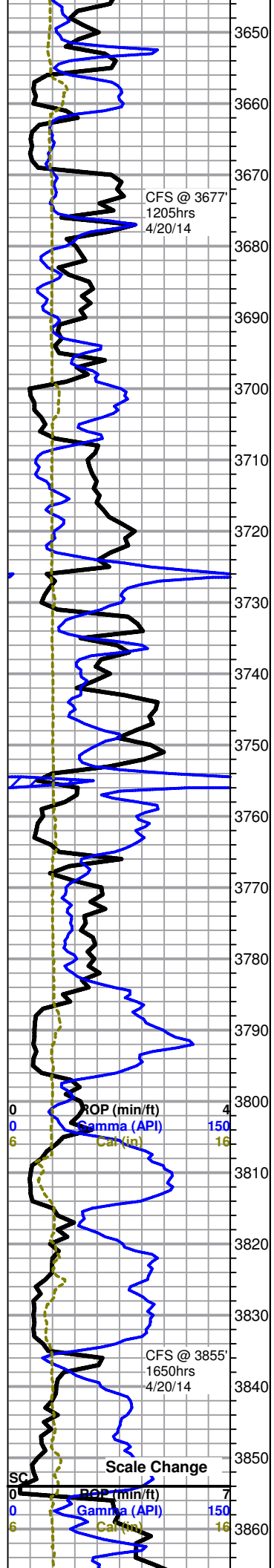
LS, cream to gray, micro-xln, oomoldic, dense with poor visible oomold porosity, barren, also with some scattered fossiliferous and lithographic, dense with poor visible porosity, no shows or odor

LS as above, slightly chalky, no shows or odor

LS, cream to gray with some scattered light brown, micro-xln, some slightly fossiliferous, some scattered sub-oolitic to oomoldic, barren

Mud-Co Mud chk
3550'
4/2014
Vis: 50 Wt: 9.2
PV:15 YP:14
WL: 8.0
Cake:1/32
pH: 9.0
Ca: 20
CHL: 5,100ppm
Sol: 6.1 LCM: 1
DMC: \$1,825.85
CMC: \$8,284.85

Total Gas (units) 200
C1 (units) 300
C2 (units) 300
C3 (units) 300
C4 (units) 300



slightly fossiliferous, some scattered sub-oomoldic to oomoldic, barren and dense with poor visible porosity, slightly chalky, no shows or odor

LS, cream, micro-xln, sub-oomoldic to oomoldic with some scattered oolitic to sub-oolitic, with poor to fair visible oomold porosity, barren, no odor

LS, cream to gray, micro-xln, some fossiliferous, some lithographic, dense with poor visible porosity, also with some scattered oolitic to oomoldic with poor to fair oomold porosity, barren, no odor

LS, cream to light gray, micro-xln, some scattered slightly fossiliferous, some lithographic, mostly dense with poor visible porosity, no shows or odor

Stark Shale 3726 (-1681)

LS, cream to light gray, micro-xln, some scattered slightly fossiliferous, some very scattered sub-oolitic to oolitic, dense with poor visible porosity, no shows or odor

LS, cream to light gray, micro-xln, mostly lithographic, some scattered slightly fossiliferous, dense with poor visible porosity, no shows or odor

LS, light gray to cream, micro-xln, lithographic and dense with poor visible porosity, no odor, no shows

BKC 3786 (-1741)

Marmaton 3796 (-1751)

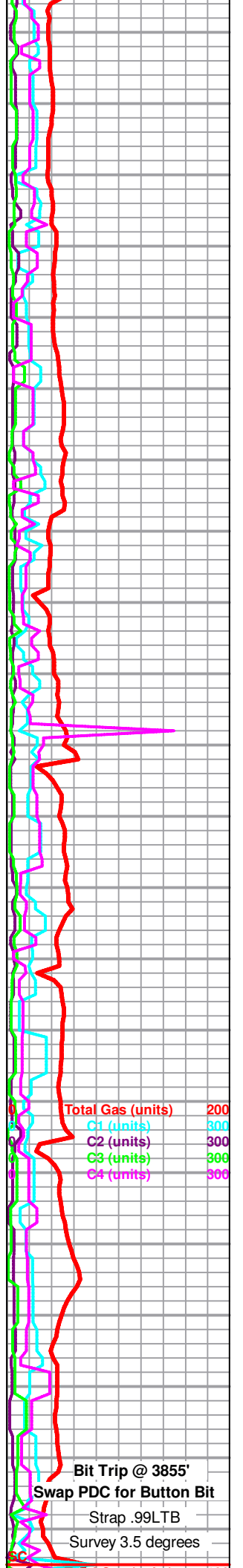
LS, cream to light gray/green with some scattered light brown, micro-xln, mostly lithographic, some scattered fossiliferous, dense with poor visible porosity, no shows or odor

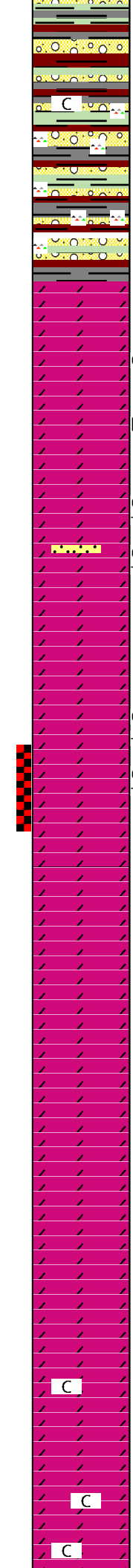
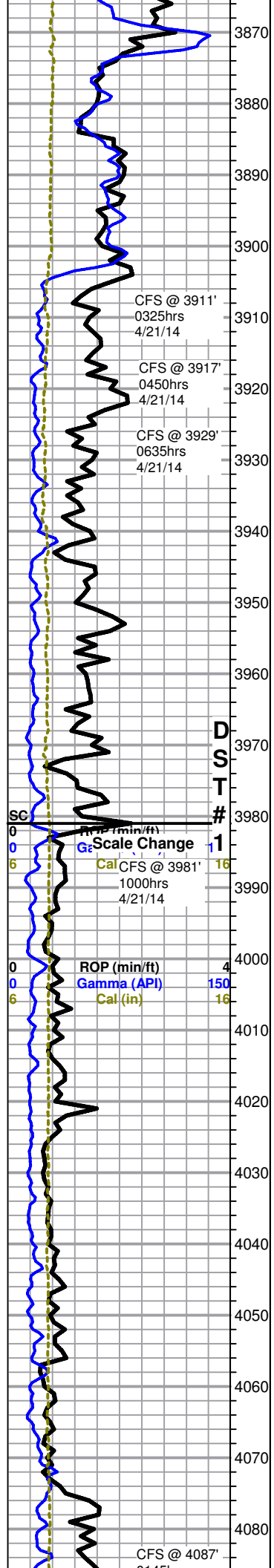
LS, cream to light gray/pale green with some scattered light brown, micro-xln, mostly lithographic and dense with poor visible porosity, also with some scattered white to off white, soft and chalky in part, no shows or odor

LS as above, also with some mixed gray and red shales, no shows or odor

Mixed cream and gray LS, mostly lithographic, some slightly fossiliferous, also with mixed red and gray shales as above with trace orange chert, no shows or odor

Mixed cream and gray LS, some fossiliferous, some lithographic, dense with poor visible porosity, some very scattered oolitic to oomoldic with some fine oolitic to oomoldic with scattered oolitic to oomoldic





poor to fair visible porosity, also with abundant gray shale to green, no shows or odor

Mixed LS and shales as above, with trace orange chert, slightly chalky, slight red wash in cup

Mixed LS and shales, also with some orange to red and tan and opaque cherts, red wash, no shows or odor

As above, also with some white chert and scattered translucent oolitic, red wash, no shows or odor

Arbuckle 3905 (-1860)

3911' 30" Mixed LS, shales, and cherts, with some scattered dolomite, cream to white, micro-xln, hard and dense with no visible porosity, poor odor in wet cup

3911' 60" mostly same as above, with few chips (<5% of tray) sub-sucrosic with poor visible porosity, friable, barren, fair odor in wet cup

3917' 30" Dolomite as above, found one chip with some rhombic to sub-rhombic development on one edge with very poor, very scattered inter-xln spotted brown to black stain on edge only, chip also has one small vug, barren, very weak cut, no odor in wet cup

3917' 60" Dolomite, cream to off-white, micro-xln, mostly hard and dense as above, with slight influx of sub-sucrosic with poor visible porosity, few chips friable, barren, poor fleeting odor in wet cup

3929' 30" Dolomite, cream, micro-xln, mostly hard and dense with no visible porosity, barren, some scattered (~25% of dolomite) sub-sucrosic with poor visible porosity, mostly dense, few chips friable, few very scattered chips (~<5%) with one to two small vugs, mostly barren, several chips with very scattered spotty dead black gilsonitic stain, poor odor in cup

3929' 60" mostly same as above, barren, gilsonitic stain appears to be dropping out, very poor fleeting odor in wet cup

~3935' Dolomite, cream to off white, micro-xln, mostly sub-sucrosic and dense with poor visible porosity, few chips with fair rhombic development, mostly dense with poor visible porosity, some scattered with poor to fair visible inter-xln porosity, few chips (<5%) of sample with very scattered flaky dead brown stain in porosity, one chip with very slight show free oil when agitated with tweezers (2 brown drops), chip too dense to break, no cut, fair show gas bubbles in wet tray, no odor

~3945' Mostly same as above, also found one sand cluster, medium grained, rounded clear quartz grains, fairly well sorted, with flaky brown to black very scattered stain, upon break cluster releases good show free oil (tarry, clingy, black drops) and fair show gas bubbles, no odor in wet cup

~ 3960' Dolomite, off white to cream, micro-xln, some hard and dense with poor visible porosity, also with some scattered (~25% of dolomite) sub-sucrosic to sucrosic with poor to fair rhombic development, few chips with fair visible inter-xln porosity, mostly barren, one chip with slight show free oil (2-3 light brown droplets) upon break, fair show gas bubbles in wet tray, no odor

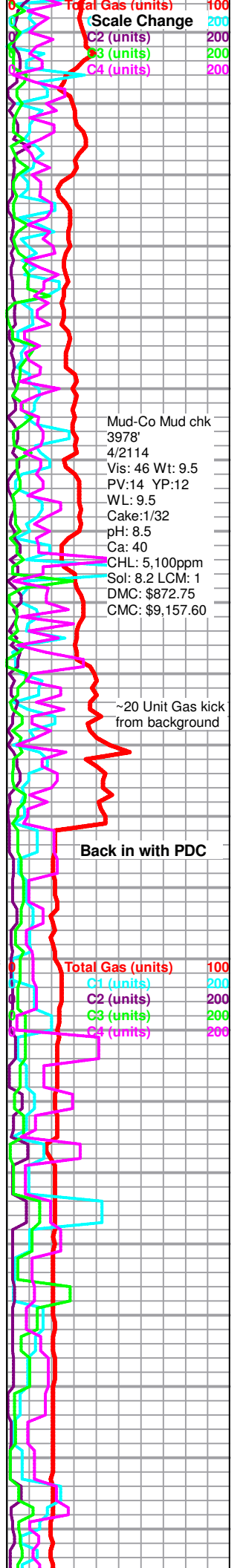
3981' 30" Dolomite, white to off-white, micro-xln, some sub-sucrosic and dense with poor visible porosity, also with some sucrosic, fair to good rhombic development, some with fair visible inter-xln porosity, appears barren, upon break chips have good show free oil, weak cut, slight show free oil and fair show gas bubbles in wet tray, fair fleeting odor

60" Mostly same as above

~3990 Dolomite, white to off-white, micro-xln, sub-sucrosic to sucrosic with poor to fair visible inter-xln porosity, some dense, some fairly friable, no shows or odor

Dolomite as above, slightly chalky

4087' 30" Dolomite, white to off-white, micro-med xln, sub-sucrosic to sucrosic, with poor to fair rhombic development and poor to fair visible porosity, some scattered glauconitic, also with some scattered large clear dolomite crystals, trace pyrite, fairly chalky, no shows or odor

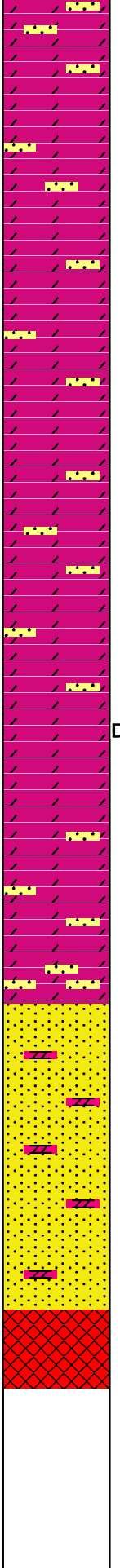
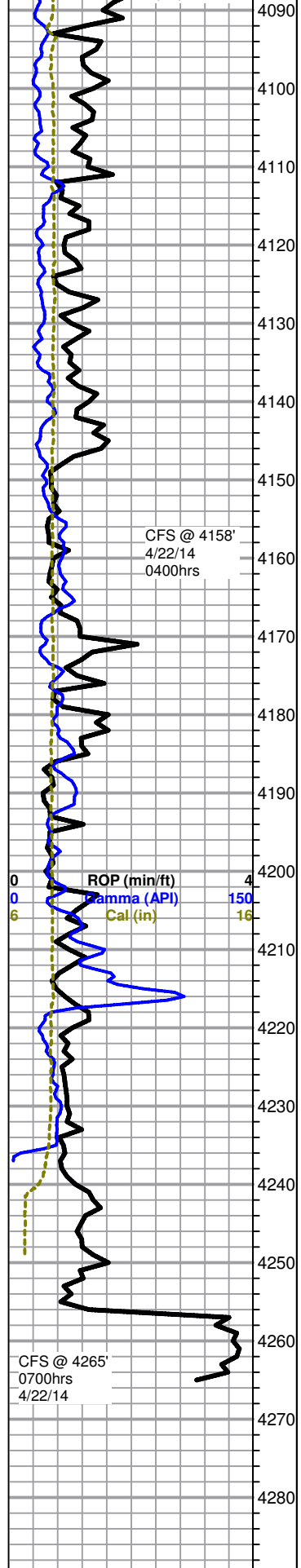


Mud-Co Mud chk
3978'
4/2114
Vis: 46 Wt: 9.5
PV:14 YP:12
WL: 9.5
Cake:1/32
pH: 8.5
Ca: 40
CHL: 5,100ppm
Sol: 8.2 LCM: 1
DMC: \$872.75
CMC: \$9,157.60

~20 Unit Gas kick from background

Back in with PDC

0145hrs
4/22/14



Dolomite as above, some scattered slightly pyritic, with influx of large clear dolomite crystals, some also pyritic, also with Dolomite Sand (~40% of tray), clear, fine-med grained, sub-rounded to rounded grains set in a micro-crypto xn dolomite matrix (mechanical erosion?), no shows or odor

Dolomite Sand as above, with some scattered sub-sucrosic to sucrosic with poor to fair visible porosity, no shows or odor

Dolomite, cream to off-white, mixed hard and dense and sub-sucrosic to sucrosic, mostly dense with poor visible porosity, with some dolomite sand (~15-20% of tray) as above, no shows or odor

4158' 30" Dolomite, micro-xn, some hard and dense, some sub-sucrosic with poor to fair rhombic development, with some dolomite sand, slightly chalky, no shows or odor

Dolomite, white to off-white, micro-xn, mostly sandy with some hard and dense, barren, also with some scattered sand clusters (~15-20% of tray), clear, fine-grained, sub-rounded to rounded, few clusters slightly glauconitic, fairly well sorted, some well cemented and dense, few clusters friable, barren, no odor in wet cup

As above, found one chip dolomite, micro-xn, sub-sucrosic, with scattered black dead gilsonitic stain, no odor in cup

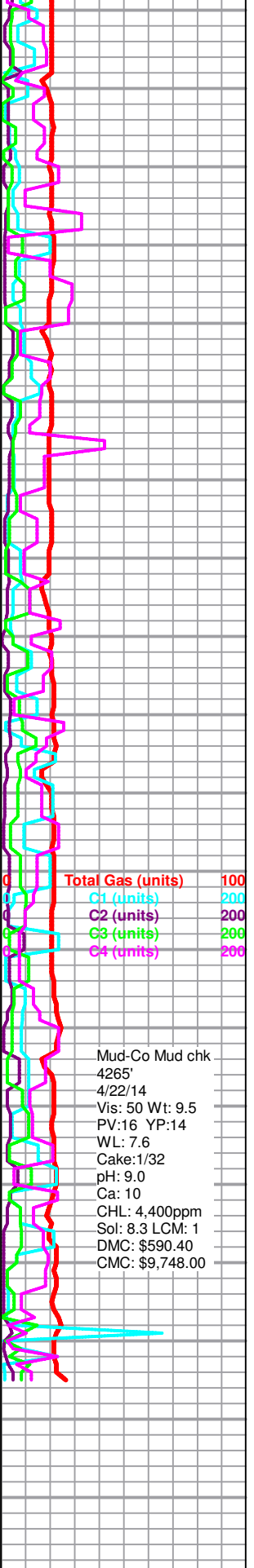
Dolomite, cream to off-white, hard and dense, some sandy, very scattered sub-sucrosic, dense with poor visible porosity, with some scattered sand clusters as above, few vi-grained, green, very friable, barren, no odor

Reagan 4217 (-2172)

Dolomite and scattered sand clusters as above, no shows or odor

4265' 30" Dolomite and sandy dolomite, with granite, orange feldspar/clear quartz with trace biotite, also with abundant quartz sand grains in bottom of tray, clear, sub-rounded to rounded, no shows or odor

60" Mostly same as above with influx of granite



Rotary TD 4265' @ 0725hrs 4/22/14
Nabors Well Services Logging TD @ 4264'
Complete Logging Operations @ hrs 4/23/14
Geologist Jeremy Schwartz off location @ 1515hrs 4/23/14