

Geologic Report

Drilling Time and Sample Log

Operator American Warrior, Inc.		KB Elevation DF 2154'
Lease Denise No. 1-33		GL 2146'
API # 15-135-25700-0000		Casing Record Surface 8 5/8" @ 222'
Field Thistle Grove Southwest		Production 5 1/2" @ 4211'
Location 1850' FSL & 2240' FWL		Electrical Surveys CNL/CDL, DIL
Sec. 33	Twp. 17s	Rge. 21w
County Ness	State Kansas	

Formation	Log Tops	Sample Tops	Struct Comp
Anhydrite Base	1425' +729	1425' +729	-5
Heebner	3594' -1440	3594' -1440	-1
Lansing	3638' -1484	3640' -1486	+2
BKc	3952' -1798	3954' -1800	
Pawnee	4024' -1870	4024' -1870	-1
Fort Scott	4100' -1946	4100' -1946	-1
Cherokee	4117' -1963	4117' -1963	-3
Mississippian	4195' -2041	4196' -2042	-1
Total Depth	4212' -2055	4210' -2053	

Reference Well For Structural Comparison Mull Drilling Co. Casey #1
C NW SW Sec. 33 T17s R21w Ness Co. Kansas

Drilling Contractor	Discovery Drilling Co. Inc.	Rig #3
Commenced	11-25-2013	Completed 12-3-2013
Samples Saved From	3900'	To RTD
Drilling Time Kept From	3500'	To RTD
Samples Examined From	3900'	To RTD
Geological Supervision From	3900'	To RTD

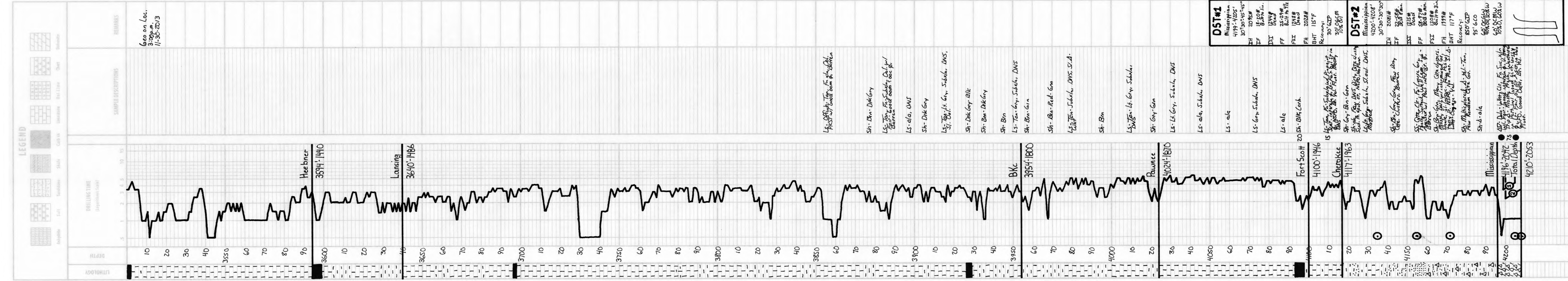
Displacement 3400' Mud Type Chemical

Summary and Recommendations

The location for the Denise #1-33 was found via 3-D seismic survey. The new well ran structurally as expected via the survey. Two drill stem tests were conducted one of which recovered commercial amounts of oil from the Mississippian Osage Formation. After all gathered data had been examined the decision was made to run 5 1/2 inch production casing to further evaluate the Denise #1-33 well.

Respectfully Submitted,

Jason T Alm
Hard Rock Consulting, Inc.



Respectfully,
Jason T Alm
12-4-2013