

Geologic Report

Drilling Time and Sample Log

Operator American Warrior, Inc.		KB Elevation 2273'
Lease Elmer's	No. 1-19	DF 2265' GL
API # 15-135-25675-0000		Casing Record Surface 8 5/8" @ 222'
Field Wildcat		Production 5 1/2" @ 4357'
Location 550' FNL & 1920' FEL		Electrical Surveys CNL/CDL, DIL
Sec. 19	Twp. 17s	Rge. 21w
County Ness	State Kansas	

Drilling Contractor	Discovery Drilling Co. Inc. Rig #3
Commenced	12-20-2013 Completed 1-10-2013
Samples Saved From	3600' To RTD
Drilling Time Kept From	3600' To RTD
Samples Examined From	3600' To RTD
Geological Supervision From	3600' To RTD

Displacement 3500' Mud Type Chemical

Summary and Recommendations

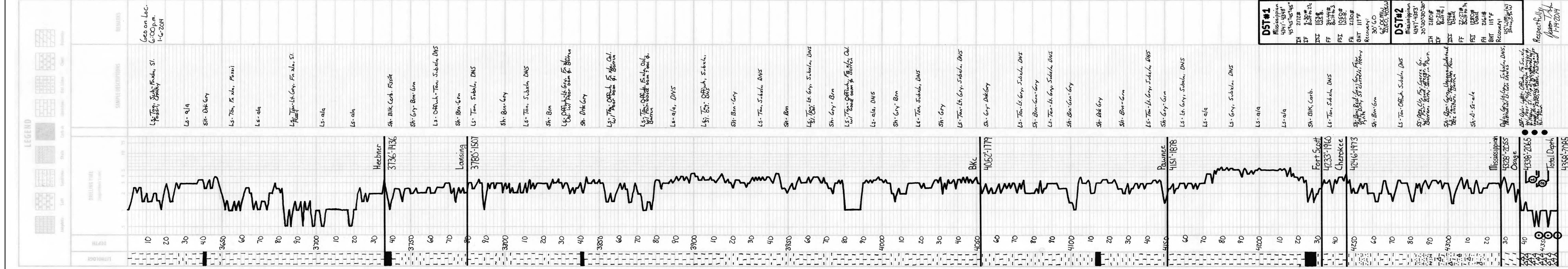
The location for the Elmer's #1-19 was found via 3-D seismic survey. The new well ran structurally as expected via the survey. Two drill stem tests were conducted one of which recovered commercial amounts of oil from the Mississippian Osage Formation. After all gathered data had been examined the decision was made to run 5 1/2 inch production casing to further evaluate the Elmer's #1-19 well.

Formation	Log Tops	Sample Tops	Struct Comp
Anhydrite	1572' +701	1571' +702	-4
Base	1607' +666	1607' +666	-3
Heebner	3735' -1462	3736' -1463	-1
Lansing	3779' -1506	3780' -1507	-1
Bkc	4051' -1778	4052' -1779	
Pawnee	4155' -1882	4151' -1878	
Fort Scott	4233' -1960	4233' -1960	+5
Cherokee	4247' -1974	4246' -1973	+4
Mississippian	4322' -2049	4328' -2055	+12
Osage	4338' -2065	4338' -2065	+4
Total Depth	4358' -2085	4358' -2085	

Reference Well For Structural Comparison **Leben Oil Corp. Wolfe #1**
4620' FSL & 660' FEL Sec. 19 T17s R21w Ness Co. Kansas

Respectfully Submitted,

Jason T Alm
Hard Rock Consulting, Inc.



DST #1		DST #2	
Mississippian 4341'-4348'	2172#	Mississippian 4347'-4353'	2180#
45°45'-45°45"	2172#	30°30'-30°30"	2180#
IF 2172#	2172#	IF 2180#	2180#
ISI 2172#	2172#	ISI 2180#	2180#
FF 2172#	2172#	FF 2180#	2180#
FSL 2172#	2172#	FSL 2180#	2180#
PH 2172#	2172#	PH 2180#	2180#
BHT 2172#	2172#	BHT 2180#	2180#
Recovery: 30' G.O.		Recovery: 30' G.O.	
92' CMU		92' CMU	
20' CO		20' CO	
40' CO		40' CO	

Respectfully Submitted
Jason T Alm
1-14-2014