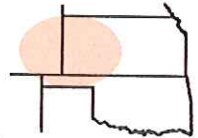


Pro-Stake LLC
Oil Field & Construction Site Staking

P.O. Box 2324
Garden City, Kansas 67846
Office/Fax: (620) 276-6159
Cell: (620) 272-1499

burt@pro-stakellc.kscoxmail.com



201332L
PLAT NO.

11771
INVOICE NO.

Shakespeare Oil Company, Inc.
OPERATOR

Campbell #4-17
LEASE NAME

Logan County, KS
COUNTY

17 13s 32w
Sec. Twp. Rng.

850' FSL - 2000' FEL
LOCATION SPOT

SCALE: **1" = 1000'**
DATE STAKED: **May. 2nd, 2014**
MEASURED BY: **Kent C.**
DRAWN BY: **Norby S.**
AUTHORIZED BY: **Alex B.**

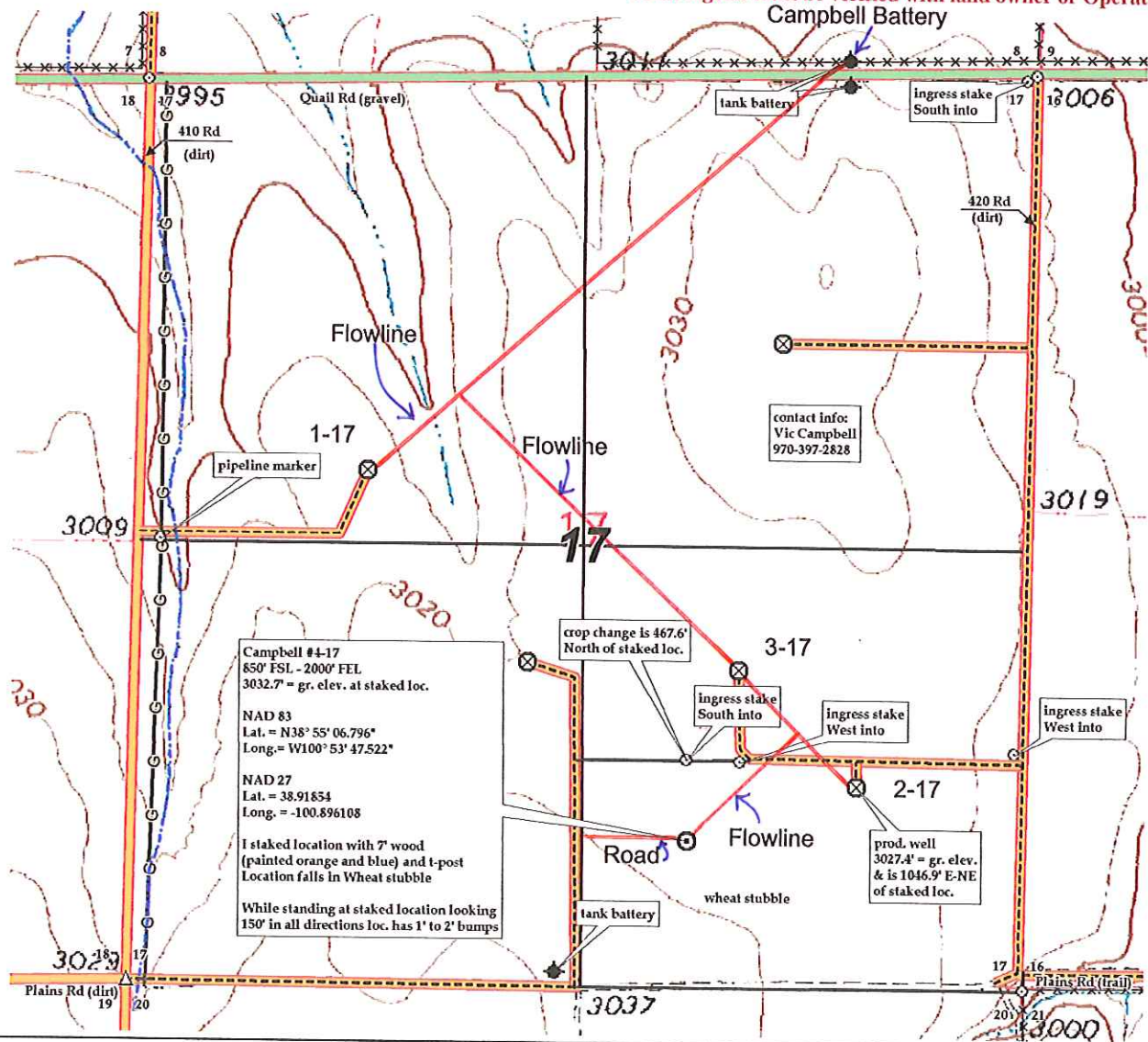


GR. ELEVATION: **3032.7'**

Directions: From the South side of Oakley, Ks at the intersection of Hwy 40 & Hwy 83 South – Now go 13 miles South on Hwy 83 South – Now go 2 miles West on Quail Rd to the NE corner of section 17-13s-32w & ingress stake South into – Now go 0.8 mile South on lease rd to ingress stake West into – Now go 0.3 mile West on lease rd to ingress stake West into – Now go approx. 330' West through wheat stubble to ingress stake South into – Now go 468' South through wheat stubble, into staked location.

Final ingress must be verified with land owner or Operator.

*This drawing does not constitute a monumented survey or a land survey plat.
This drawing is for construction purposes only.*



Preliminary non-binding estimate of flowlines, roads and tanks