



Musgrove

NOTES

Company: Blueridge Petroleum Corporation

Lease: Kvasnicka 1-1

Field: Wildcat

Location: SE-NE-SW-NW

Sec: 1 Twsp: 13S Rge: 25W

County: Trego State: Kansas

KB: 2526' GL: 2517'

API #: 15-195-22933-00-00

Contractor: Southwind Drilling Inc. (Rig #8)

Spud: 04/11/2014 Comp: 04/20/2014

RTD: 4560' LTD: 4559'

Mud Up: 3500' Type Mud: Chemical

Samples Saved From: 3600' to RTD

Drilling Time Kept From: 3600' to RTD

Samples Examined From: 3600' to RTD

Geological Supervision from: 3600' to RTD

Geologist on Well: Wyatt Urban, Clint Musgrove and Jim Musgrove

Surface Casing: 8 5/8@ 219'

Electronic Surveys: Logged by Nabors: CNL/CDL, DIL, MEL and SONIC

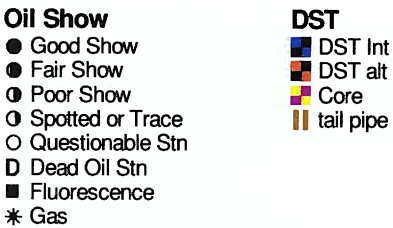
ROCK TYPES



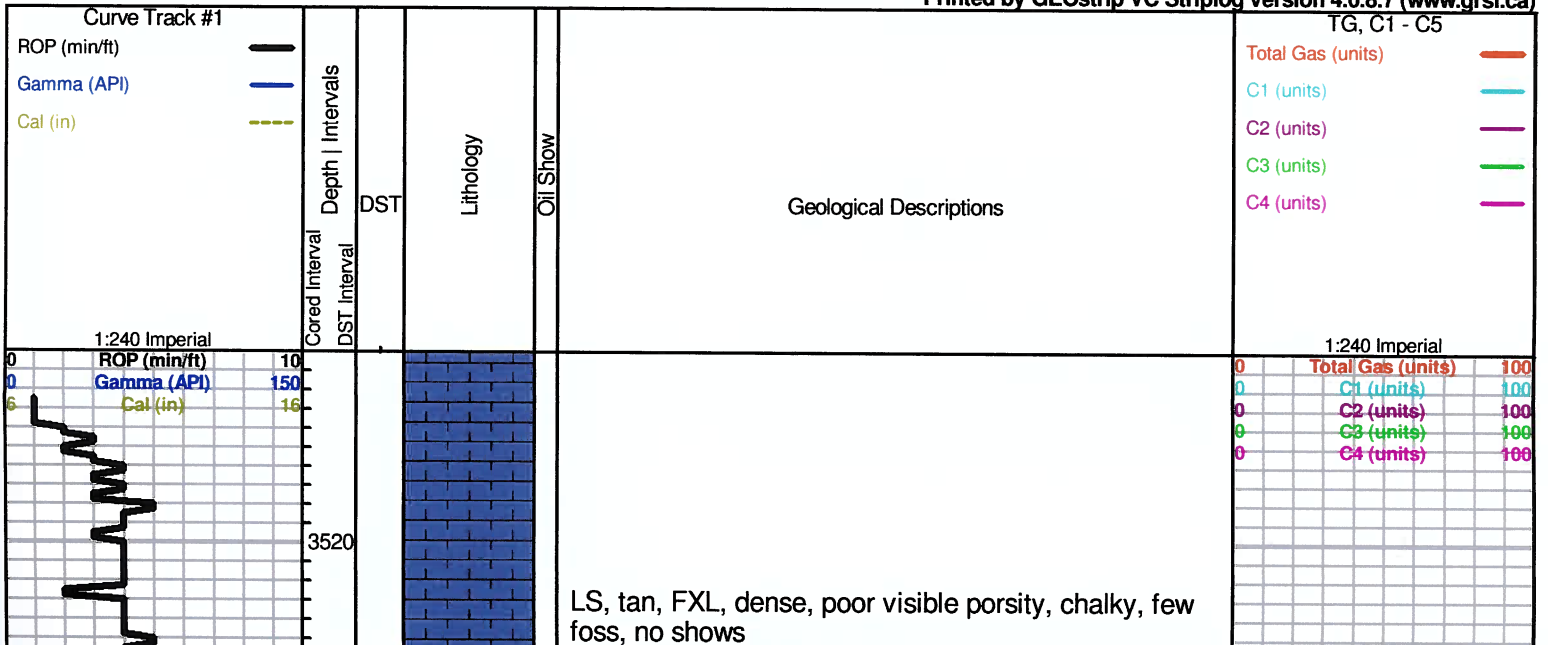
ACCESSORIES

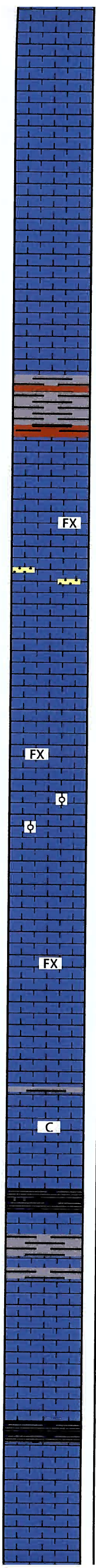
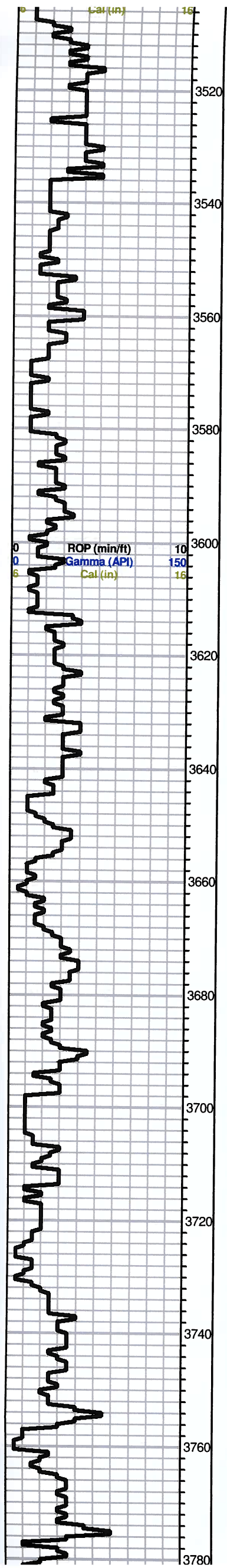


OTHER SYMBOLS



Printed by GEOstrip VC Striplog version 4.0.8.7 (www.grsi.ca)





LS, tan, FXL, dense, poor visible porosity, chalky, few foss, no shows

LS, cream to white, FXL, foss, dense, NSFO

Sh. gray, greenish maroon

LS, gray, FXL, foss, dense, cherty in parts, poor visible porosity.

LS, cream to white, FXL, dense, cherty in parts, poor visible porosity

LS, white, FXL, ool, poorly enveloped, chalky, NSFO

LS, gray, F-MXL, foss, poor visible porosity, cherty in parts, trc. black carb sh.

LS, tan, FXL, few foss, poor visible porosity, no shows

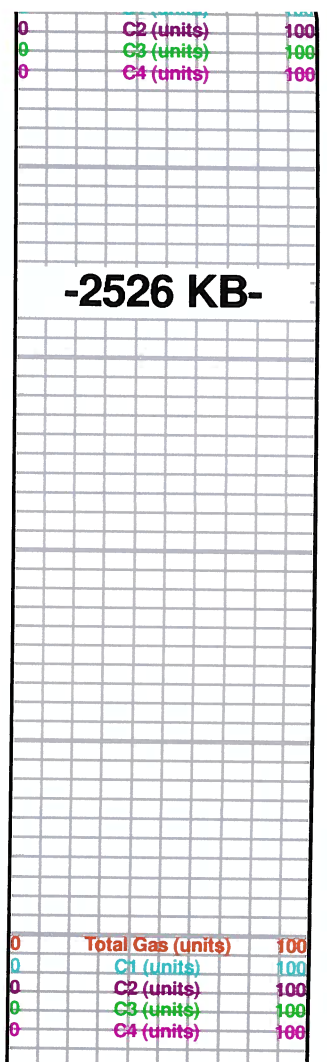
LS, tan FXL, foss, v. chalky, poor scattered porosity, NSFO

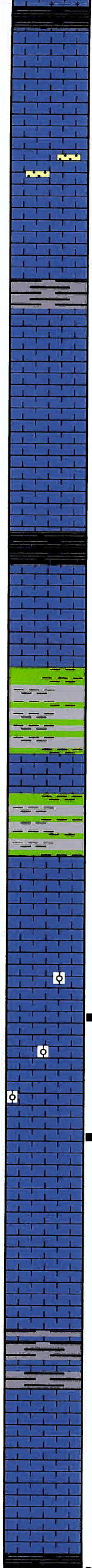
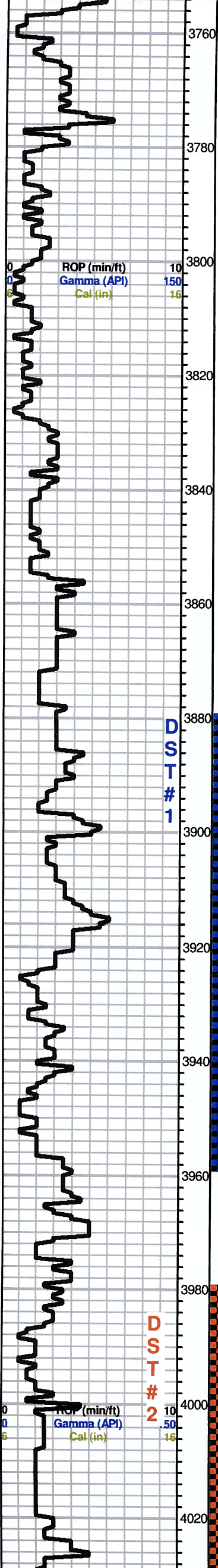
Black carb Sh.

LS, tan to brown, FXL, dense, poor scattered porosity, few foss, no shows

Black carb shale

-2526 KB-





Black carb shale

LS, cream, chalky, foss, poor visible porosity, trc. gray

LS, white, chalky, foss, poor visible porosity, no shows

Sh. gray, maroon, silty

LS, tan, FXL, foss, poor scattered porosity, no shows

Black carb shale

Heebner 3851 (-1325)

LS, tan to brown, FXL, dense, foss, poor visible porosity, no shows

Toronto 3871 (-1345)

LS, tan to brown, FXL, foss, slightly chalky, poor scattered porosity, NSFO

Lansing 3888 (-1362)

LS, cream to white, ool, poorly developed, chalky in parts, poor scattered porosity, no shows

LS, white to gray, FXL, dense, foss, chalky in parts, poor visible porosity, no shows

LS, white to gray, FXL, dense, foss, chalky, poor visible porosity, no shows

LS, white, FXL, ool, poor scattered porosity, chalky in parts, no shows

LS, cream to white, ool, poor to fair scattered porosity, Lt. Flor. cut, trc. black stain, no odor

LS, cream to white, FXL, ool, poorly developed, poor scattered porosity, NSFO,

LS, cream to white, ool, poor to fair scattered porosity, Lt. Flor. cut, trc. black stain, no odor

Poor sample quality after dst

LS, cream to tan, FXL, foss, dense, poor visible porosity, no shows

LS, cream to white, FXL, dense, poor visible porosity, NSFO, no odor, no flor. cut

LS, tan to brown, foss, chalky, poor P.P. porosity, NSFO, no odor, Trc. gray, maroon, silty shale

LS, tan to white, FXL, ool, poorly developed, chalky, poor visible porosity, Trc. cherts, white, opaque

Black carb sh.

0	Total Gas (units)	100
0	C1 (units)	100
0	C2 (units)	100
0	C3 (units)	100
0	C4 (units)	100

3.5 hr rig repair

DST #1 3882-3955
30-30-15-30

Initial Opening: BOB Immediately
2nd Opening: built to 7"

Recovery:
146' HWCM (30%W, 70%M)
2457 MCW (82%W, 18% M)

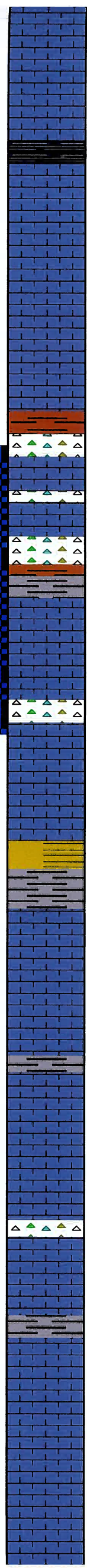
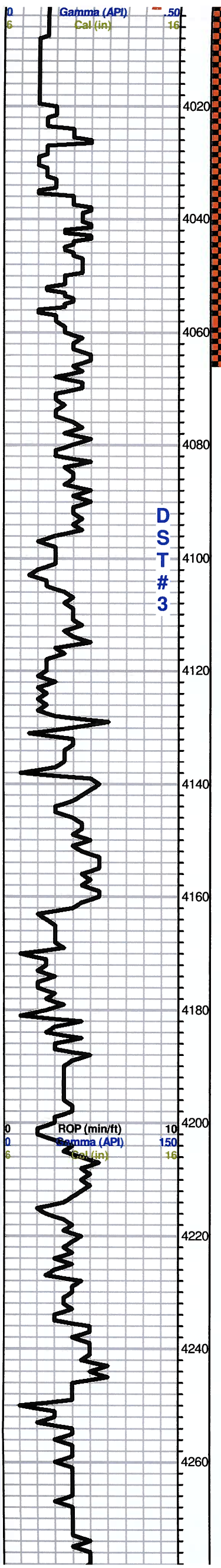
Pressures:
ISIP: 1243 psi
FSIP: 1247 psi
IFP: 711-1232 psi
FFP: 1236-1245 psi
HSH: 1837-1837 psi

DST #2 3977-4065
30-30-45-45

Initial Opening: BOB 30 sec
2nd Opening: BOB 10.5 mins

Recovery:
282' HWCM (40%W, 60% M)
2331' MCW (75%W, 25% M)

Pressures:



LS; tan to cream, fxl, cherty, poor vis porosity, NSFO, no odor, Trc. gray, maroon, silty shale

LS, tan to white, FXL, ool, poorly developed, chalky, poor visible porosity, Trc. cherts, white, opaque

Black carb sh.

LS, white, ool, FXL, dense, poor visible porosity, NSFO, no odor, black trace stain (1)

LS, cream to white, FXL poorly developed ool, poor scattered porosity, NSFO, Trc. brick red shale

LS, white, FXL chalky few foss, poor scattered porosity, trace black stain, NSFO, no odor, no flor. cut

Trc. Sd. clear qtz, sub ang. friable poorly sorted, no shows

Sh Red
LS; fxl, cherty, poor vis porosity n/s

LS; crm, fxl, cherty, poor porosity, n/s, no odor

LS: crm, fxl, chlky, cherty
tr red/gry sh

LS; crm, fxl, dense, n/s, no odor

LS; crm, fxl, cherty, ft blk stn, no odor, nsfo

LS; crm , fxl, cherty, scatt porosity, n/s

BKC 4133 (-1607)

LS; crm, fxl, chlky, poor vis porosity,

Sh: brn/red/grn

Sh, gry

LS; wh, fxl, chlky, dense, n/s

Poor Sample Quality

Marmaton 4181 (-1655)

LS; wh/crm, fxl, dense, n/s
sh blk/gry

LS; crm, fxl, cherty, dense, poor vis porosity

LS; wh/gry, dense, poor vis porosity

AA w/chert

LS: crm,wh,gry, fxl, cherty, dense

AA w/dk gry shilty sh

Poor Sample Quality

LS; crm/wh, fxl, poor vis porosity, ft brn stn, no odor, nsfo

Poor Sample Quality

LS; wh/gry, grandular, chlky, sand? n/s

LS; gry; fxl, poor vis porosity

2nd Opening: BOB 10.5 mins

Recovery:
282' HWCW (40%W, 60% M)
2331' MCW (75%W, 25% M)

Pressures:
ISIP: 1239 psi
FSIP: 1241 psi
IFP: 434-1208 psi
FFP: 1216-1240 psi
HSH: 1893-1884 psi

**DST #3 4080-4130
30-30-45-45**

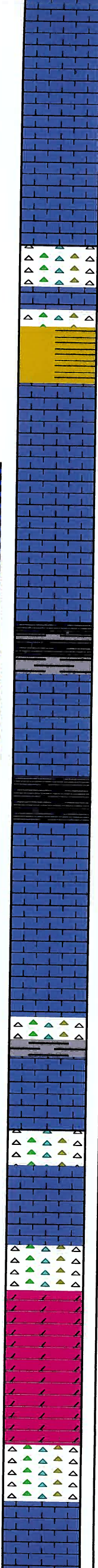
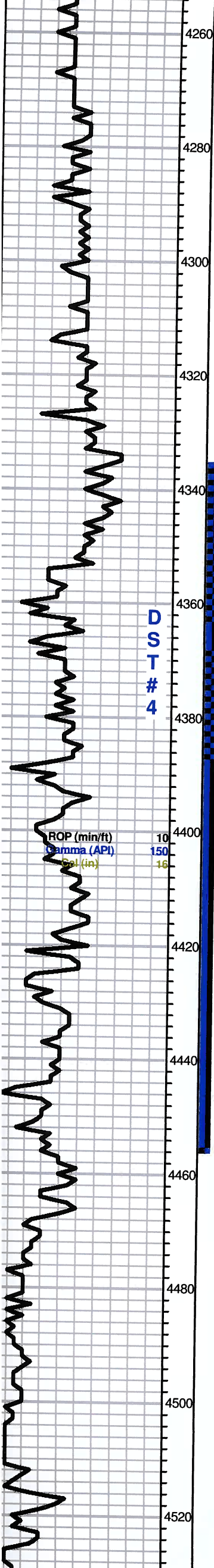
Initial Opening: BOB 7.75 mins
2nd Opening: BOB 8.25 mins

Recovery:
103" HMCW (53%W, 47%M)
882 SLMCW (90%W, 10%M)

Pressures:
ISIP: 1373 psi
FSIP: 1367 psi
IFP: 19-220 psi
FFP: 225-478 psi
HSH: 1934-1932 psi

0	Total Gas (units)	100
0	C1 (units)	100
0	C2 (units)	100
0	C3 (units)	100
0	C4 (units)	100

-2526 KB-



ISU

Poor Sample Quality

LS; wh/gry, grandular, chlky, sand? n/s

LS; gry; fxl, poor vis porosity

Pawnee 4288 (-1762)

LS; wh/gry, sandy/gran-chlky

LS; tan, fxl, slightly cherty, tr orange/gry chert

gry-yellow cherty LS

LS; gry dark gry, sandy granular

aa few shales & yellow/ gry foss LS

LS; gry dense, gran few shaley

gry drk gry shaley LS

AA

Ft. Scott 4364 (-1838)

Blk carb sh

LS; gry, f-med xl, foss, scatt porosity, brn/gry stn, sfo, ft odor

Cherokee 4389 (-1863)

blk carb sh

LS; gry/tan, foss, chlky, tr brn stn, trfo, no odor

LS; tan/gry, f-medxl, scatt porosity, tr stn, trfo

LS; gry, yellow foss, chlky

LS AA & sd, wh, red vfg, sub rounded few friable n/s

Mississippi 4457 (-1931)

Yellow/gry, purpleish, sandy sh & rose tin

LS; med xl, n/s

Mississippi Spergen 4473 (-1947)

dol; gry, tan, fxl, suc, few vuggy, tr cherty qtz & wh boney cherty

aa foss chert & sd; wh, clear, vfg & cherty qtz

AA

dol, cherty aa

dol & cherty

Tan highly dol. & foss LS

DST #4 4334-4455
30-30-60-75

Initial Opening: Built to 2 in
 2nd Opening: built to 7 in

Recovery:
 94' GIP
 31' SLOCM (10%O, 90% M)

Pressures:
 ISIP: 204 psi
 FSIP: 787 psi
 IFP: 13-19 psi
 FFP: 17-24 psi
 HSH: 2106-2101 ps

0	Total Gas (Units)	100
0	C1 (units)	100
0	C2 (units)	100
0	C3 (units)	100
0	C4 (units)	100

