



DRILL STEM TEST REPORT

Prepared For: **American Warrior Inc.**

PO Box 399
Garden City KS 67846

ATTN: Jason Alm

Ben Hinnergardt #3

12-20s-21w Ness,KS

Start Date: 2014.02.03 @ 20:55:00

End Date: 2014.02.04 @ 04:47:45

Job Ticket #: 56206 DST #: 1

Trilobite Testing, Inc

PO Box 362 Hays, KS 67601

ph: 785-625-4778 fax: 785-625-5620

Printed: 2014.02.11 @ 08:39:18



TRILOBITE TESTING, INC.

DRILL STEM TEST REPORT

American Warrior Inc.
 PO Box 399
 Garden City KS 67846
 ATTN: Jason Alm

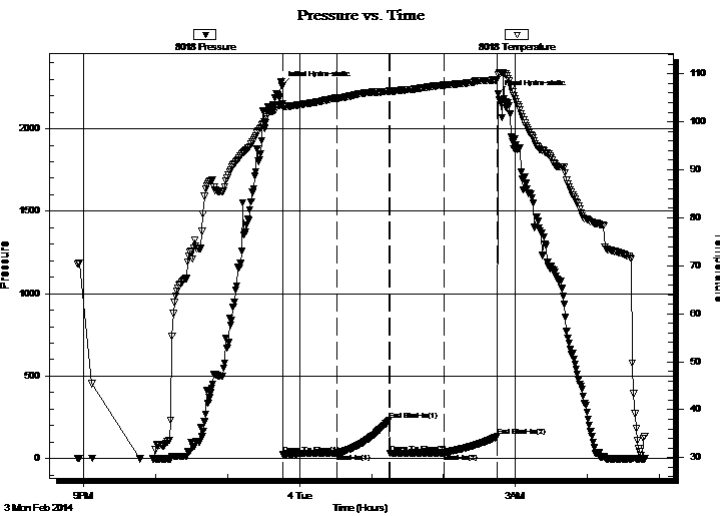
12-20s-21w Ness, KS
Ben Hinnergardt #3
 Job Ticket: 56206 **DST#: 1**
 Test Start: 2014.02.03 @ 20:55:00

GENERAL INFORMATION:

Formation: **Miss**
 Deviated: No Whipstock: ft (KB)
 Time Tool Opened: 23:46:00
 Time Test Ended: 04:47:45
 Interval: **4329.00 ft (KB) To 4389.00 ft (KB) (TVD)**
 Total Depth: 4389.00 ft (KB) (TVD)
 Hole Diameter: 7.88 inches Hole Condition: Fair
 Test Type: Conventional Bottom Hole (Initial)
 Tester: Brett Dickinson
 Unit No: 59
 Reference Elevations: 2236.00 ft (KB)
 2230.00 ft (CF)
 KB to GR/CF: 6.00 ft

Serial #: 8018 Inside
 Press@RunDepth: 34.83 psig @ 4335.00 ft (KB) Capacity: 8000.00 psig
 Start Date: 2014.02.03 End Date: 2014.02.04 Last Calib.: 2014.02.04
 Start Time: 20:55:05 End Time: 04:47:44 Time On Btm: 2014.02.03 @ 23:45:30
 Time Off Btm: 2014.02.04 @ 02:45:45

TEST COMMENT: IF-1" blow
 IS- No blow
 FF- No blow
 FS- No blow



PRESSURE SUMMARY

Time (Min.)	Pressure (psig)	Temp (deg F)	Annotation
0	2260.60	103.74	Initial Hydro-static
1	26.19	103.05	Open To Flow (1)
46	32.54	104.96	Shut-In(1)
90	234.92	106.42	End Shut-In(1)
91	32.77	106.35	Open To Flow (2)
135	34.83	107.65	Shut-In(2)
180	133.18	108.75	End Shut-In(2)
181	2210.18	109.90	Final Hydro-static

Recovery

Length (ft)	Description	Volume (bbl)
5.00	Oil Spotted Mud	0.02

Gas Rates

	Choke (inches)	Pressure (psig)	Gas Rate (Mcf/d)



TRILOBITE
TESTING, INC

DRILL STEM TEST REPORT

American Warrior Inc.
PO Box 399
Garden City KS 67846
ATTN: Jason Alm

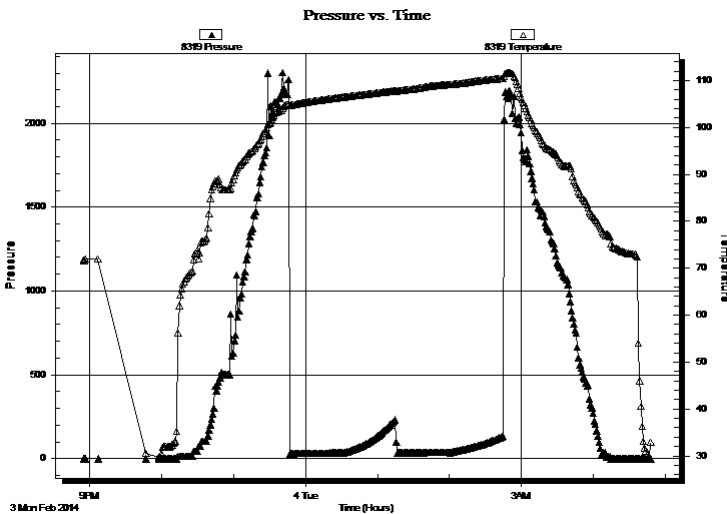
12-20s-21w Ness,KS
Ben Hinnergardt #3
Job Ticket: 56206 **DST#: 1**
Test Start: 2014.02.03 @ 20:55:00

GENERAL INFORMATION:

Formation: **Miss**
Deviated: No Whipstock: ft (KB) Test Type: Conventional Bottom Hole (Initial)
Time Tool Opened: 23:46:00 Tester: Brett Dickinson
Time Test Ended: 04:47:45 Unit No: 59
Interval: 4329.00 ft (KB) To 4389.00 ft (KB) (TVD) Reference Elevations: 2236.00 ft (KB)
Total Depth: 4389.00 ft (KB) (TVD) 2230.00 ft (CF)
Hole Diameter: 7.88 inches Hole Condition: Fair KB to GR/CF: 6.00 ft

Serial #: 8319 Outside
Press@RunDepth: psig @ 4335.00 ft (KB) Capacity: 8000.00 psig
Start Date: 2014.02.03 End Date: 2014.02.04 Last Calib.: 2014.02.04
Start Time: 20:55:05 End Time: 04:48:14 Time On Btm:
Time Off Btm:

TEST COMMENT: IF-1" blow
IS-No blow
FF-No blow
FS-No blow



PRESSURE SUMMARY

Time (Min.)	Pressure (psig)	Temp (deg F)	Annotation

Recovery

Length (ft)	Description	Volume (bbl)
5.00	Oil Spotted Mud	0.02

Gas Rates

Choke (inches)	Pressure (psig)	Gas Rate (Mcf/d)



**TRILOBITE
TESTING, INC**

DRILL STEM TEST REPORT

TOOL DIAGRAM

American Warrior Inc.

12-20s-21w Ness, KS

PO Box 399
Garden City KS 67846

Ben Hinnergardt #3

Job Ticket: 56206

DST#: 1

ATTN: Jason Alm

Test Start: 2014.02.03 @ 20:55:00

Tool Information

Drill Pipe:	Length: 4126.00 ft	Diameter: 3.80 inches	Volume: 57.88 bbl	Tool Weight:	2500.00 lb
Heavy Wt. Pipe:	Length: ft	Diameter: 2.70 inches	Volume: - bbl	Weight set on Packer:	25000.00 lb
Drill Collar:	Length: 184.00 ft	Diameter: 2.25 inches	Volume: 0.90 bbl	Weight to Pull Loose:	80000.00 lb
			<u>Total Volume:</u>	Tool Chased	0.00 ft
Drill Pipe Above KB:	9.00 ft			String Weight: Initial	67000.00 lb
Depth to Top Packer:	4329.00 ft			Final	67000.00 lb
Depth to Bottom Packer:	ft				
Interval between Packers:	60.00 ft				
Tool Length:	88.00 ft				
Number of Packers:	2	Diameter: 6.75 inches			

Tool Comments:

Tool Description

Tool Description	Length (ft)	Serial No.	Position	Depth (ft)	Accum. Lengths
Shut In Tool	5.00			4306.00	
Hydraulic tool	5.00			4311.00	
Jars	5.00			4316.00	
Safety Joint	3.00			4319.00	
Packer	5.00			4324.00	28.00 Bottom Of Top Packer
Packer	5.00			4329.00	
Stubb	1.00			4330.00	
Perforations	5.00			4335.00	
Recorder	0.00	8018	Inside	4335.00	
Recorder	0.00	8319	Outside	4335.00	
Change Over Sub	1.00			4336.00	
Drill Pipe	31.00			4367.00	
Change Over Sub	1.00			4368.00	
Perforations	18.00			4386.00	
Bullnose	3.00			4389.00	60.00 Bottom Packers & Anchor

Total Tool Length: 88.00



**TRILOBITE
TESTING, INC**

DRILL STEM TEST REPORT

FLUID SUMMARY

American Warrior Inc.

12-20s-21w Ness, KS

PO Box 399
Garden City KS 67846

Ben Hinnergardt #3

Job Ticket: 56206

DST#: 1

ATTN: Jason Alm

Test Start: 2014.02.03 @ 20:55:00

Mud and Cushion Information

Mud Type: Gel Chem

Cushion Type:

Oil API:

deg API

Mud Weight: 10.00 lb/gal

Cushion Length:

ft

Water Salinity:

ppm

Viscosity: 60.00 sec/qt

Cushion Volume:

bbbl

Water Loss: 7.18 in³

Gas Cushion Type:

Resistivity: ohm.m

Gas Cushion Pressure:

psig

Salinity: 4700.00 ppm

Filter Cake: inches

Recovery Information

Recovery Table

Length ft	Description	Volume bbl
5.00	Oil Spotted Mud	0.025

Total Length: 5.00 ft Total Volume: 0.025 bbl

Num Fluid Samples: 0

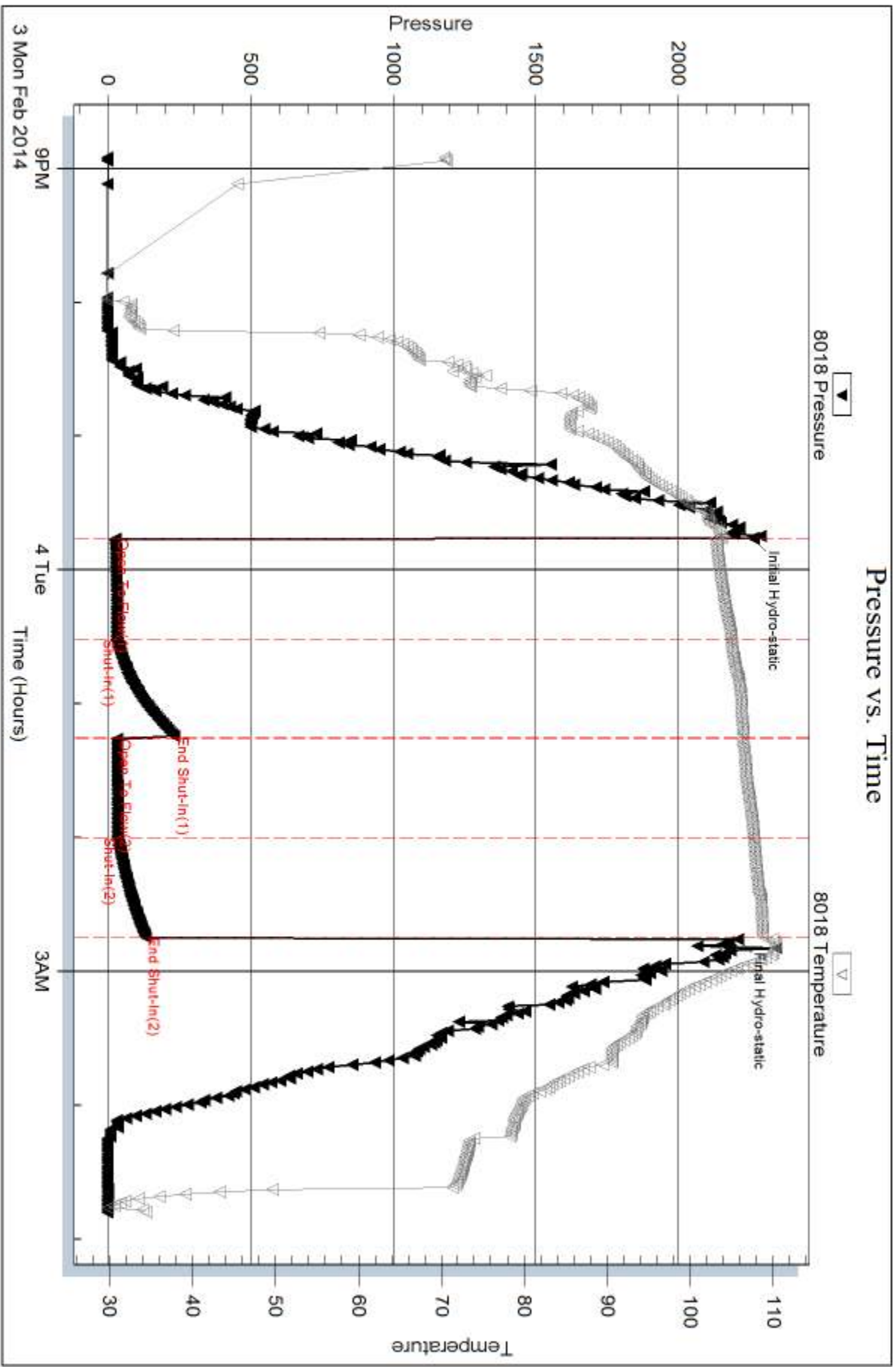
Num Gas Bombs: 0

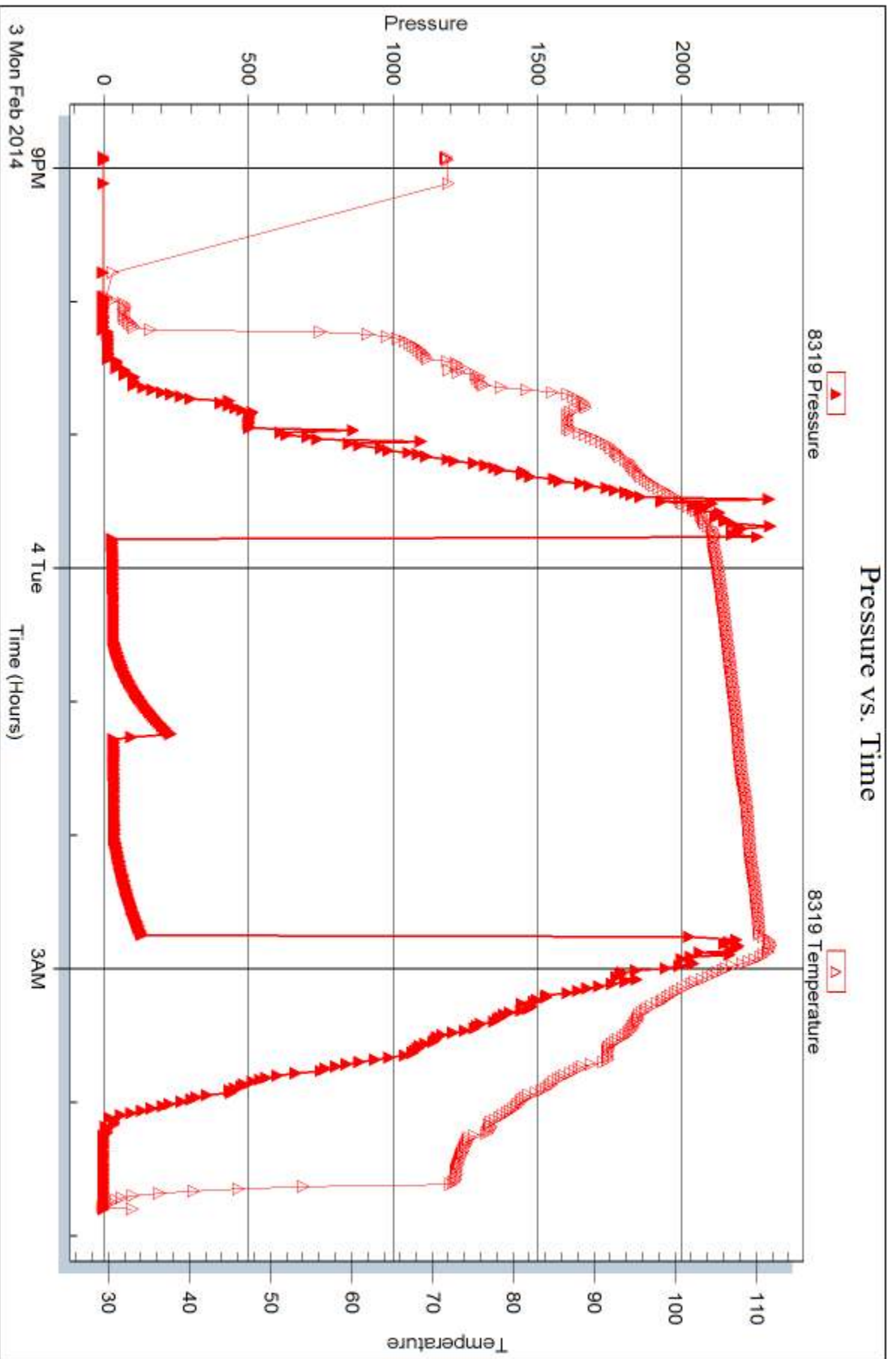
Serial #:

Laboratory Name:

Laboratory Location:

Recovery Comments:







DRILL STEM TEST REPORT

Prepared For: **American Warrior Inc.**

PO Box 399
Garden City KS 67846

ATTN: Jason Alm

Ben Hinnergardt #3

12-20s-21w Ness,KS

Start Date: 2014.02.04 @ 10:35:00

End Date: 2014.02.04 @ 17:00:45

Job Ticket #: 56207 DST #: 2

Trilobite Testing, Inc

PO Box 362 Hays, KS 67601

ph: 785-625-4778 fax: 785-625-5620

Printed: 2014.02.11 @ 08:38:49



TRILOBITE TESTING, INC

DRILL STEM TEST REPORT

American Warrior Inc.
 PO Box 399
 Garden City KS 67846
 ATTN: Jason Alm

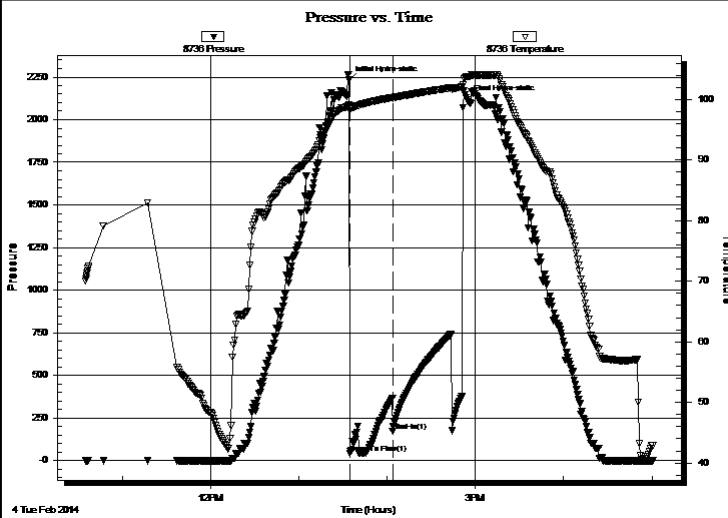
12-20s-21w Ness, KS
Ben Hinnergardt #3
 Job Ticket: 56207 **DST#: 2**
 Test Start: 2014.02.04 @ 10:35:00

GENERAL INFORMATION:

Formation: **Miss**
 Deviated: No Whipstock: ft (KB)
 Time Tool Opened: 13:34:45
 Time Test Ended: 17:00:45
 Interval: **4328.00 ft (KB) To 4397.00 ft (KB) (TVD)**
 Total Depth: 4389.00 ft (KB) (TVD)
 Hole Diameter: 7.88 inches Hole Condition: Fair
 Test Type: Conventional Bottom Hole (Reset)
 Tester: Brett Dickinson
 Unit No: 59
 Reference Elevations: 2236.00 ft (KB)
 2230.00 ft (CF)
 KB to GR/CF: 6.00 ft

Serial #: 8736 Outside
 Press@RunDepth: psig @ 4334.00 ft (KB) Capacity: 8000.00 psig
 Start Date: 2014.02.04 End Date: 2014.02.04 Last Calib.: 2014.02.04
 Start Time: 10:35:05 End Time: 17:00:44 Time On Btm: 2014.02.04 @ 13:34:00
 Time Off Btm: 2014.02.04 @ 14:54:30

TEST COMMENT: IF-1" blow
 IS-No blow
 FF-No blow



PRESSURE SUMMARY

Time (Min.)	Pressure (psig)	Temp (deg F)	Annotation
0	2231.68	99.08	Initial Hydro-static
1	41.99	98.19	Open To Flow (1)
30	170.46	100.27	Shut-In(1)
81	2116.52	103.78	Final Hydro-static

Recovery

Length (ft)	Description	Volume (bbl)
10.00	Oil Spotted Mud	0.05

* Recovery from multiple tests

Gas Rates

Choke (inches)	Pressure (psig)	Gas Rate (Mcf/d)



**TRILOBITE
TESTING, INC**

DRILL STEM TEST REPORT

TOOL DIAGRAM

American Warrior Inc.
PO Box 399
Garden City KS 67846
ATTN: Jason Alm

12-20s-21w Ness, KS
Ben Hinnergardt #3
Job Ticket: 56207 **DST#: 2**
Test Start: 2014.02.04 @ 10:35:00

Tool Information

Drill Pipe:	Length: 4126.00 ft	Diameter: 3.80 inches	Volume: 57.88 bbl	Tool Weight:	2500.00 lb
Heavy Wt. Pipe:	Length: ft	Diameter: 2.70 inches	Volume: - bbl	Weight set on Packer:	25000.00 lb
Drill Collar:	Length: 184.00 ft	Diameter: 2.25 inches	Volume: 0.90 bbl	Weight to Pull Loose:	70000.00 lb
			<u>Total Volume:</u>	Tool Chased	0.00 ft
Drill Pipe Above KB:	10.00 ft			String Weight: Initial	67000.00 lb
Depth to Top Packer:	4328.00 ft			Final	67000.00 lb
Depth to Bottom Packer:	ft				
Interval between Packers:	69.00 ft				
Tool Length:	97.00 ft				
Number of Packers:	2	Diameter: 6.75 inches			

Tool Comments:

Tool Description	Length (ft)	Serial No.	Position	Depth (ft)	Accum. Lengths
-------------------------	--------------------	-------------------	-----------------	-------------------	-----------------------

Shut In Tool	5.00			4305.00	
Hydraulic tool	5.00			4310.00	
Jars	5.00			4315.00	
Safety Joint	3.00			4318.00	
Packer	5.00			4323.00	28.00 Bottom Of Top Packer
Packer	5.00			4328.00	
Stubb	1.00			4329.00	
Perforations	5.00			4334.00	
Recorder	0.00	8018	Inside	4334.00	
Recorder	0.00	8736	Outside	4334.00	
Change Over Sub	1.00			4335.00	
Drill Pipe	31.00			4366.00	
Change Over Sub	1.00			4367.00	
Perforations	27.00			4394.00	
Bullnose	3.00			4397.00	69.00 Bottom Packers & Anchor

Total Tool Length: 97.00



**TRILOBITE
TESTING, INC**

DRILL STEM TEST REPORT

FLUID SUMMARY

American Warrior Inc.

12-20s-21w Ness, KS

PO Box 399
Garden City KS 67846

Ben Hinnergardt #3

Job Ticket: 56207

DST#: 2

ATTN: Jason Alm

Test Start: 2014.02.04 @ 10:35:00

Mud and Cushion Information

Mud Type: Gel Chem

Cushion Type:

Oil API:

deg API

Mud Weight: 10.00 lb/gal

Cushion Length:

ft

Water Salinity:

ppm

Viscosity: 60.00 sec/qt

Cushion Volume:

bbbl

Water Loss: 7.17 in³

Gas Cushion Type:

Resistivity: ohm.m

Gas Cushion Pressure:

psig

Salinity: 4700.00 ppm

Filter Cake: inches

Recovery Information

Recovery Table

Length ft	Description	Volume bbl
10.00	Oil Spotted Mud	0.049

Total Length: 10.00 ft Total Volume: 0.049 bbl

Num Fluid Samples: 0

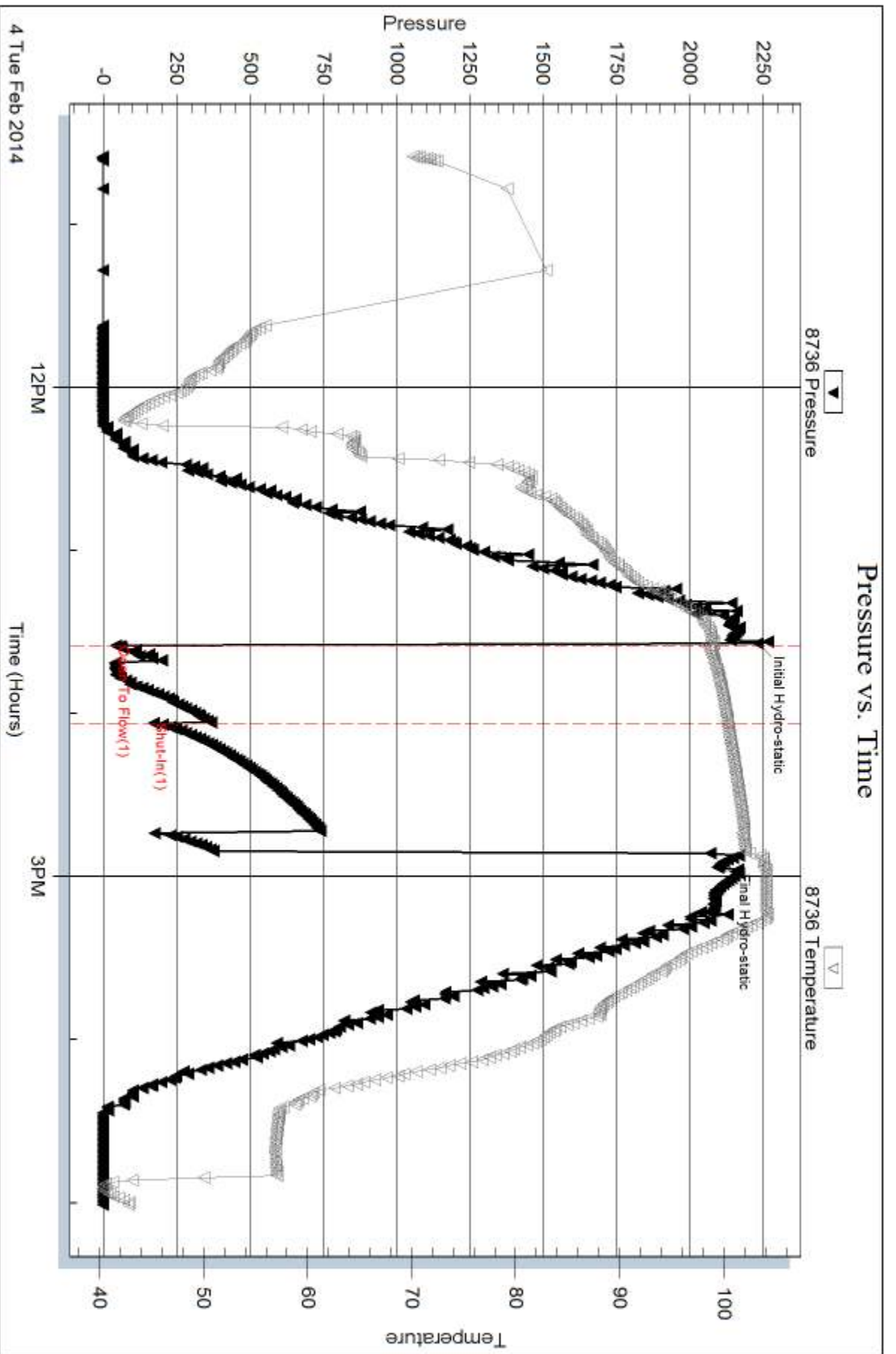
Num Gas Bombs: 0

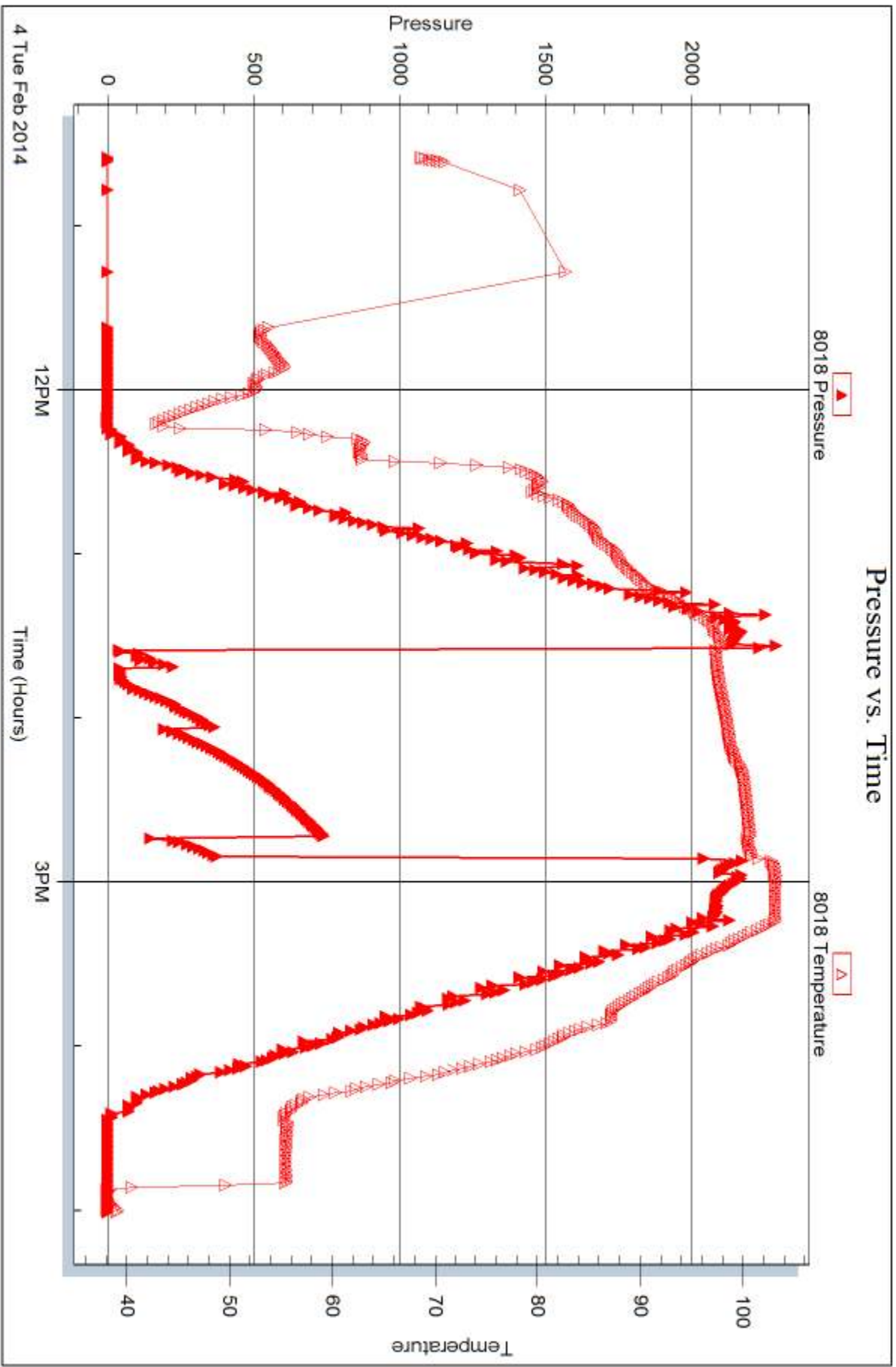
Serial #:

Laboratory Name:

Laboratory Location:

Recovery Comments:







DRILL STEM TEST REPORT

Prepared For: **American Warrior Inc.**

PO Box 399
Garden City KS 67846

ATTN: Jason Alm

Ben Hinnergardt #3

12-20s-21w Ness,KS

Start Date: 2014.02.07 @ 00:10:05

End Date: 2014.02.07 @ 10:07:00

Job Ticket #: 56208 DST #: 3

Trilobite Testing, Inc

PO Box 362 Hays, KS 67601

ph: 785-625-4778 fax: 785-625-5620

Printed: 2014.02.11 @ 08:38:26



**TRILOBITE
TESTING, INC.**

DRILL STEM TEST REPORT

American Warrior Inc.
PO Box 399
Garden City KS 67846
ATTN: Jason Alm

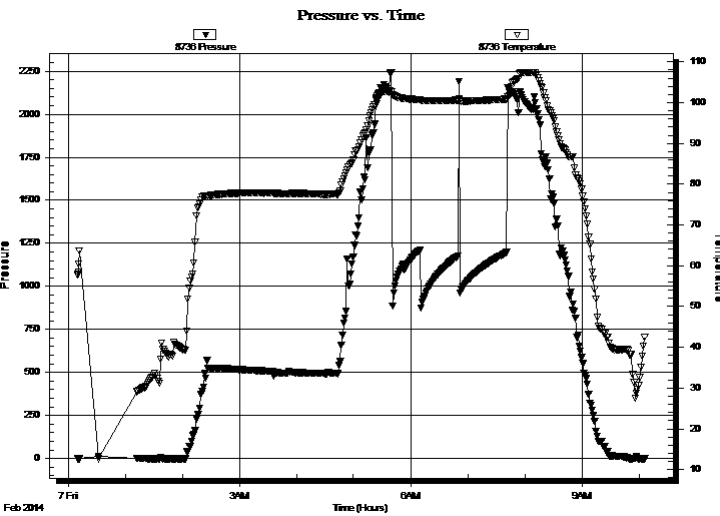
12-20s-21w Ness, KS
Ben Hinnergardt #3
Job Ticket: 56208 **DST#: 3**
Test Start: 2014.02.07 @ 00:10:05

GENERAL INFORMATION:

Formation: **Miss**
Deviated: No Whipstock: ft (KB)
Time Tool Opened:
Time Test Ended: 10:07:00
Interval: **4328.00 ft (KB) To 4399.00 ft (KB) (TVD)**
Total Depth: 4399.00 ft (KB) (TVD)
Hole Diameter: 7.88 inches Hole Condition: Fair
Test Type: Conventional Bottom Hole (Reset)
Tester: Brett Dickinson
Unit No: 59
Reference Elevations: 2236.00 ft (KB)
2230.00 ft (CF)
KB to GR/CF: 6.00 ft

Serial #: 8736 Outside
Press@RunDepth: psig @ 4336.00 ft (KB) Capacity: 8000.00 psig
Start Date: 2014.02.07 End Date: 2014.02.07 Last Calib.: 2014.02.07
Start Time: 00:10:05 End Time: 10:07:00 Time On Btm:
Time Off Btm:

TEST COMMENT: IF-1 1/4in blow
IS-No blow
FF-No blow Flush tool 1in blow died to 3/4in
FS-No blow



PRESSURE SUMMARY

Time (Min.)	Pressure (psig)	Temp (deg F)	Annotation

Recovery

Length (ft)	Description	Volume (bbl)
10.00	Oil Spotted Mud	0.05

Gas Rates

Choke (inches)	Pressure (psig)	Gas Rate (Mcf/d)

* Recovery from multiple tests



TRILOBITE TESTING, INC

DRILL STEM TEST REPORT

American Warrior Inc.
 PO Box 399
 Garden City KS 67846
 ATTN: Jason Alm

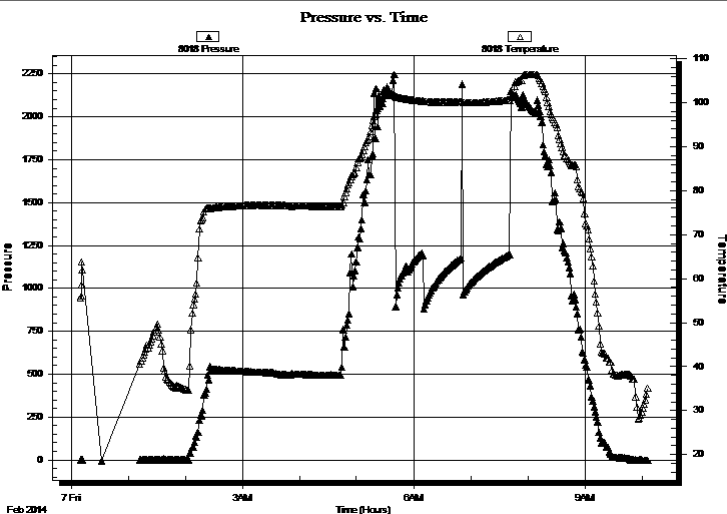
12-20s-21w Ness, KS
Ben Hinnergardt #3
 Job Ticket: 56208 **DST#: 3**
 Test Start: 2014.02.07 @ 00:10:05

GENERAL INFORMATION:

Formation: **Miss**
 Deviated: No Whipstock: ft (KB) Test Type: Conventional Bottom Hole (Reset)
 Time Tool Opened: Tester: Brett Dickinson
 Time Test Ended: 10:07:00 Unit No: 59
Interval: 4328.00 ft (KB) To 4399.00 ft (KB) (TVD) Reference Elevations: 2236.00 ft (KB)
 Total Depth: 4399.00 ft (KB) (TVD) 2230.00 ft (CF)
 Hole Diameter: 7.88 inches Hole Condition: Fair KB to GR/CF: 6.00 ft

Serial #: 8018 Inside
 Press@RunDepth: psig @ 4336.00 ft (KB) Capacity: 8000.00 psig
 Start Date: 2014.02.07 End Date: 2014.02.07 Last Calib.: 2014.02.07
 Start Time: 00:10:05 End Time: 10:06:45 Time On Btm:
 Time Off Btm:

TEST COMMENT: IF-1 1/4in blow
 IS-No blow
 FF-No blow Flush tool 1in blow died to 3/4in
 FS-No blow



PRESSURE SUMMARY			
Time (Min.)	Pressure (psig)	Temp (deg F)	Annotation

Recovery		
Length (ft)	Description	Volume (bbl)
10.00	Oil Spotted Mud	0.05

Gas Rates			
	Choke (inches)	Pressure (psig)	Gas Rate (Mcf/d)

* Recovery from multiple tests



**TRILOBITE
TESTING, INC**

DRILL STEM TEST REPORT

TOOL DIAGRAM

American Warrior Inc.

12-20s-21w Ness,KS

PO Box 399
Garden City KS 67846

Ben Hinnergardt #3

Job Ticket: 56208

DST#: 3

ATTN: Jason Alm

Test Start: 2014.02.07 @ 00:10:05

Tool Information

Drill Pipe:	Length: 4126.00 ft	Diameter: 3.80 inches	Volume: 57.88 bbl	Tool Weight:	2500.00 lb
Heavy Wt. Pipe:	Length: ft	Diameter: 2.70 inches	Volume: - bbl	Weight set on Packer:	25000.00 lb
Drill Collar:	Length: 184.00 ft	Diameter: 2.25 inches	Volume: 0.90 bbl	Weight to Pull Loose:	75000.00 lb
			<u>Total Volume:</u>	Tool Chased	0.00 ft
				String Weight: Initial	68000.00 lb
Drill Pipe Above KB:	10.00 ft			Final	68000.00 lb
Depth to Top Packer:	4328.00 ft				
Depth to Bottom Packer:	ft				
Interval between Packers:	71.00 ft				
Tool Length:	99.00 ft				
Number of Packers:	2	Diameter:	6.75 inches		
Tool Comments:					

Tool Description	Length (ft)	Serial No.	Position	Depth (ft)	Accum. Lengths
------------------	-------------	------------	----------	------------	----------------

Shut In Tool	5.00			4305.00	
Hydraulic tool	5.00			4310.00	
Jars	5.00			4315.00	
Safety Joint	3.00			4318.00	
Packer	5.00			4323.00	28.00 Bottom Of Top Packer
Packer	5.00			4328.00	
Stubb	1.00			4329.00	
Perforations	7.00			4336.00	
Recorder	0.00	8018	Inside	4336.00	
Recorder	0.00	8736	Outside	4336.00	
Change Over Sub	1.00			4337.00	
Drill Pipe	31.00			4368.00	
Change Over Sub	1.00			4369.00	
Perforations	27.00			4396.00	
Bullnose	3.00			4399.00	71.00 Bottom Packers & Anchor

Total Tool Length: 99.00



**TRILOBITE
TESTING, INC**

DRILL STEM TEST REPORT

FLUID SUMMARY

American Warrior Inc.

12-20s-21w Ness, KS

PO Box 399
Garden City KS 67846

Ben Hinnergardt #3

Job Ticket: 56208

DST#: 3

ATTN: Jason Alm

Test Start: 2014.02.07 @ 00:10:05

Mud and Cushion Information

Mud Type: Gel Chem

Cushion Type:

Oil API:

deg API

Mud Weight: 10.00 lb/gal

Cushion Length:

ft

Water Salinity:

ppm

Viscosity: 60.00 sec/qt

Cushion Volume:

bbf

Water Loss: 7.18 in³

Gas Cushion Type:

Resistivity: ohm.m

Gas Cushion Pressure:

psig

Salinity: 4700.00 ppm

Filter Cake: inches

Recovery Information

Recovery Table

Length ft	Description	Volume bbf
10.00	Oil Spotted Mud	0.049

Total Length: 10.00 ft Total Volume: 0.049 bbf

Num Fluid Samples: 0

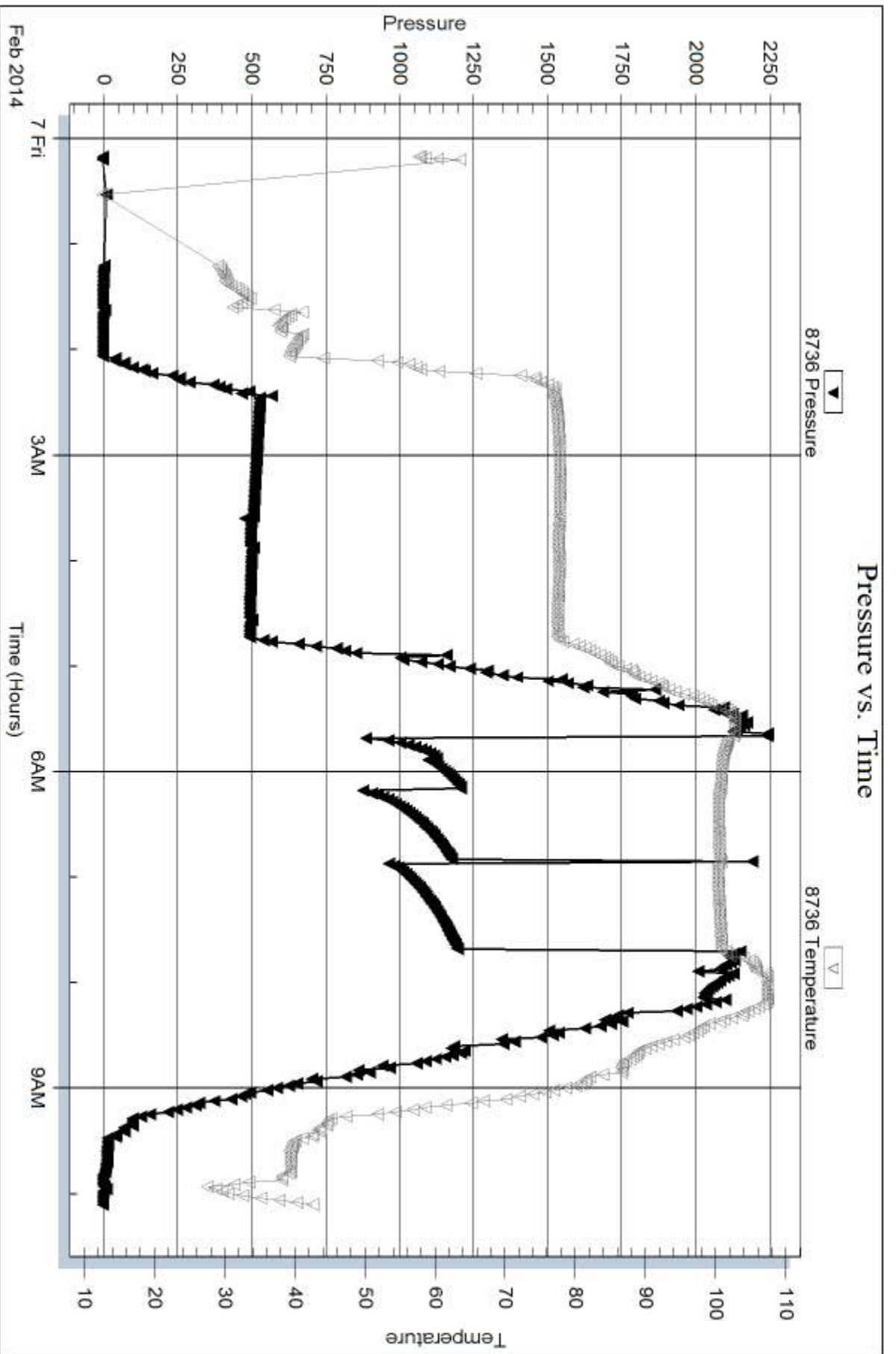
Num Gas Bombs: 0

Serial #:

Laboratory Name:

Laboratory Location:

Recovery Comments:



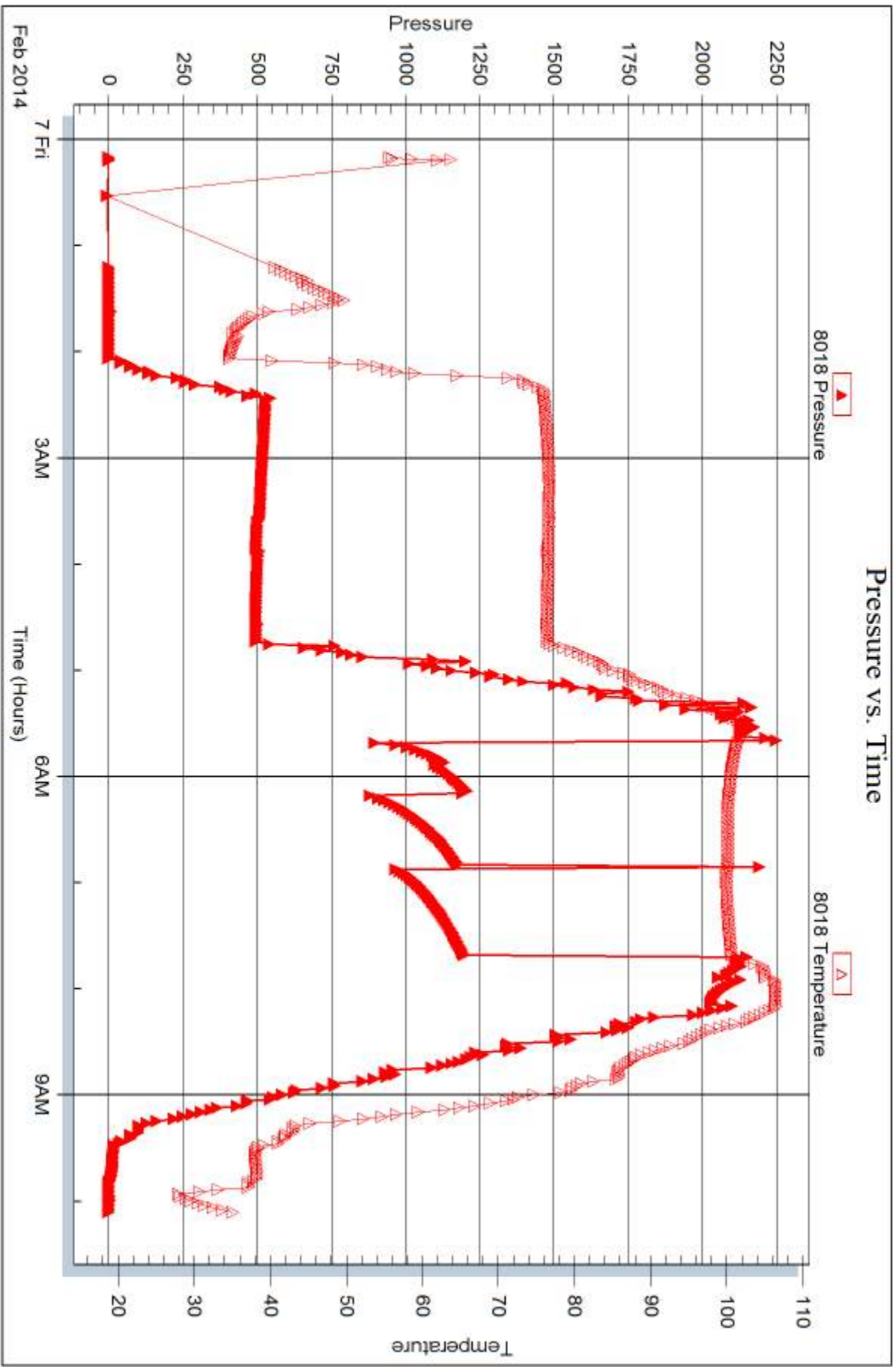
Serial #: 8018

Inside

American Warrior Inc.

Ben Hinnergardt #3

DST Test Number: 3



Triobite Testing, Inc

Ref. No: 56208

Printed: 2014.02.11 @ 08:38:28



DRILL STEM TEST REPORT

Prepared For: **American Warrior Inc.**

PO Box 399
Garden City KS 67846

ATTN: Jason Alm

Ben Hinnergardt #3

12-20s-21w Ness,KS

Start Date: 2014.02.03 @ 20:55:00

End Date:

Job Ticket #: 56209

DST #: 4

Trilobite Testing, Inc
PO Box 362 Hays, KS 67601
ph: 785-625-4778 fax: 785-625-5620

Printed: 2014.02.11 @ 08:38:01



**TRILOBITE
TESTING, INC**

DRILL STEM TEST REPORT

American Warrior Inc.
PO Box 399
Garden City KS 67846
ATTN: Jason Alm

12-20s-21w Ness,KS

Ben Hinnergardt #3

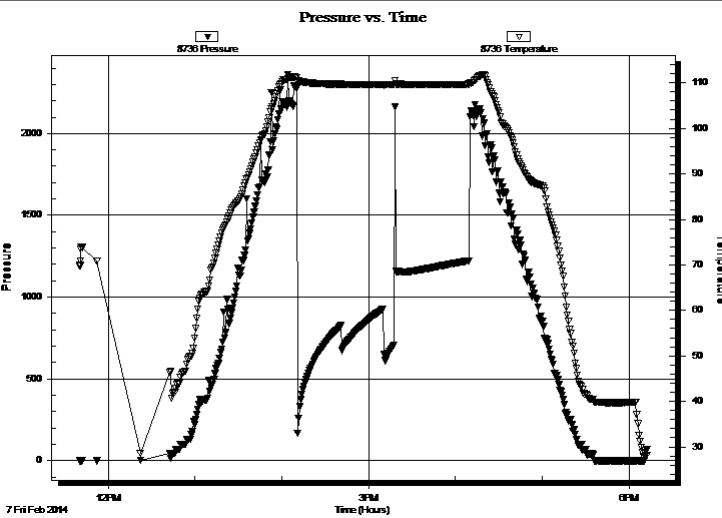
Job Ticket: 56209 **DST#: 4**
Test Start: 2014.02.03 @ 20:55:00

GENERAL INFORMATION:

Formation: Miss			
Deviated: No	Whipstock:	ft (KB)	Test Type: Conventional Bottom Hole (Reset)
Time Tool Opened:			Tester: Brett Dickinson
Time Test Ended:			Unit No: 59
Interval: 4329.00 ft (KB) To 4399.00 ft (KB) (TVD)			Reference Elevations: 2236.00 ft (KB)
Total Depth: 4399.00 ft (KB) (TVD)			2230.00 ft (CF)
Hole Diameter: 7.88 inches	Hole Condition: Fair		KB to GR/CF: 6.00 ft

Serial #: 8736	Outside				
Press@RunDepth:	psig @	4335.00 ft (KB)	Capacity:	8000.00 psig	
Start Date:	2014.02.07	End Date:	2014.02.07	Last Calib.:	1899.12.30
Start Time:	11:40:05	End Time:	18:12:14	Time On Btm:	
				Time Off Btm:	

TEST COMMENT: IF-1 3/4" blow died back to 1 1/2"
 IS-No blow
 FF-weak surface blow flush tool 1in blow died to 3/4"
 FS-No blow



PRESSURE SUMMARY

Time (Min.)	Pressure (psig)	Temp (deg F)	Annotation

Recovery

Length (ft)	Description	Volume (bbl)
60.00	Mud	0.30

* Recovery from multiple tests

Gas Rates

Choke (inches)	Pressure (psig)	Gas Rate (Mcf/d)



TRILOBITE TESTING, INC.

DRILL STEM TEST REPORT

American Warrior Inc.

12-20s-21w Ness, KS

PO Box 399
Garden City KS 67846

Ben Hinnergardt #3

ATTN: Jason Alm

Job Ticket: 56209

DST#: 4

Test Start: 2014.02.03 @ 20:55:00

GENERAL INFORMATION:

Formation: **Miss**

Deviated: No Whipstock: ft (KB)

Time Tool Opened:

Time Test Ended:

Test Type: Conventional Bottom Hole (Reset)

Tester: Brett Dickinson

Unit No: 59

Interval: 4329.00 ft (KB) To 4399.00 ft (KB) (TVD)

Reference Elevations: 2236.00 ft (KB)

Total Depth: 4399.00 ft (KB) (TVD)

2230.00 ft (CF)

Hole Diameter: 7.88 inches Hole Condition: Fair

KB to GR/CF: 6.00 ft

Serial #: 8018 Inside

Press@RunDepth: psig @ 4335.00 ft (KB)

Capacity: 8000.00 psig

Start Date: 2014.02.07 End Date: 2014.02.07

Last Calib.: 2014.02.07

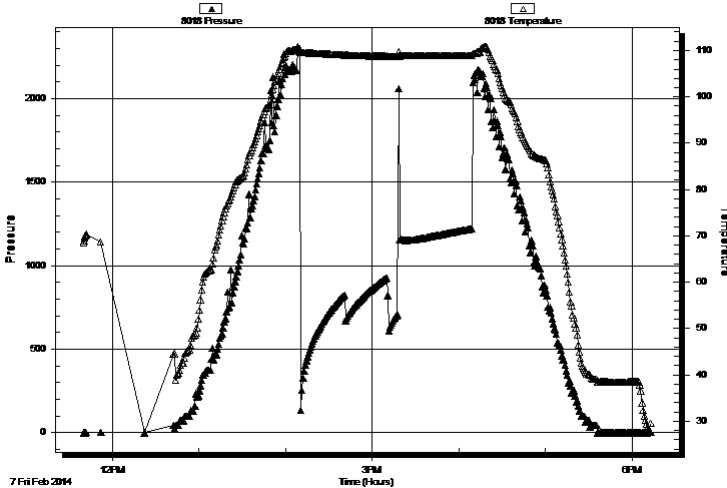
Start Time: 11:40:05 End Time: 18:12:59

Time On Btm:

Time Off Btm:

TEST COMMENT: IF-1 3/4" blow died back to 1 1/2"
IS-No blow
FF-weak surface blow flush tool 1in blow died to 3/4"
FS-No blow

Pressure vs. Time



PRESSURE SUMMARY

Time (Min.)	Pressure (psig)	Temp (deg F)	Annotation

Recovery

Length (ft)	Description	Volume (bbl)
60.00	Mud	0.30

* Recovery from multiple tests

Gas Rates

Choke (inches)	Pressure (psig)	Gas Rate (Mcf/d)



**TRILOBITE
TESTING, INC**

DRILL STEM TEST REPORT

TOOL DIAGRAM

American Warrior Inc.
PO Box 399
Garden City KS 67846
ATTN: Jason Alm

12-20s-21w Ness, KS
Ben Hinnergardt #3
Job Ticket: 56209 **DST#: 4**
Test Start: 2014.02.03 @ 20:55:00

Tool Information

Drill Pipe:	Length: 4126.00 ft	Diameter: 3.80 inches	Volume: 57.88 bbl	Tool Weight:	2500.00 lb
Heavy Wt. Pipe:	Length: ft	Diameter: 2.70 inches	Volume: - bbl	Weight set on Packer:	25000.00 lb
Drill Collar:	Length: 184.00 ft	Diameter: 2.25 inches	Volume: 0.90 bbl	Weight to Pull Loose:	90000.00 lb
			<u>Total Volume:</u>	Tool Chased	0.00 ft
Drill Pipe Above KB:	9.00 ft			String Weight: Initial	68000.00 lb
Depth to Top Packer:	4329.00 ft			Final	68000.00 lb
Depth to Bottom Packer:	ft				
Interval between Packers:	70.00 ft				
Tool Length:	98.00 ft				
Number of Packers:	2	Diameter: 6.75 inches			

Tool Comments:

Tool Description	Length (ft)	Serial No.	Position	Depth (ft)	Accum. Lengths
-------------------------	--------------------	-------------------	-----------------	-------------------	-----------------------

Shut In Tool	5.00			4306.00	
Hydraulic tool	5.00			4311.00	
Jars	5.00			4316.00	
Safety Joint	3.00			4319.00	
Packer	5.00			4324.00	28.00 Bottom Of Top Packer
Packer	5.00			4329.00	
Stubb	1.00			4330.00	
Perforations	5.00			4335.00	
Recorder	0.00	8018	Inside	4335.00	
Recorder	0.00	8736	Outside	4335.00	
Change Over Sub	1.00			4336.00	
Drill Pipe	31.00			4367.00	
Change Over Sub	1.00			4368.00	
Perforations	28.00			4396.00	
Bullnose	3.00			4399.00	70.00 Bottom Packers & Anchor

Total Tool Length: 98.00



**TRILOBITE
TESTING, INC**

DRILL STEM TEST REPORT

FLUID SUMMARY

American Warrior Inc.

12-20s-21w Ness, KS

PO Box 399
Garden City KS 67846

Ben Hinnergardt #3

Job Ticket: 56209

DST#: 4

ATTN: Jason Alm

Test Start: 2014.02.03 @ 20:55:00

Mud and Cushion Information

Mud Type: Gel Chem

Cushion Type:

Oil API:

deg API

Mud Weight: 10.00 lb/gal

Cushion Length:

ft

Water Salinity:

ppm

Viscosity: 60.00 sec/qt

Cushion Volume:

bbbl

Water Loss: 7.18 in³

Gas Cushion Type:

Resistivity: ohm.m

Gas Cushion Pressure:

psig

Salinity: 4700.00 ppm

Filter Cake: inches

Recovery Information

Recovery Table

Length ft	Description	Volume bbl
60.00	Mud	0.295

Total Length: 60.00 ft Total Volume: 0.295 bbl

Num Fluid Samples: 0

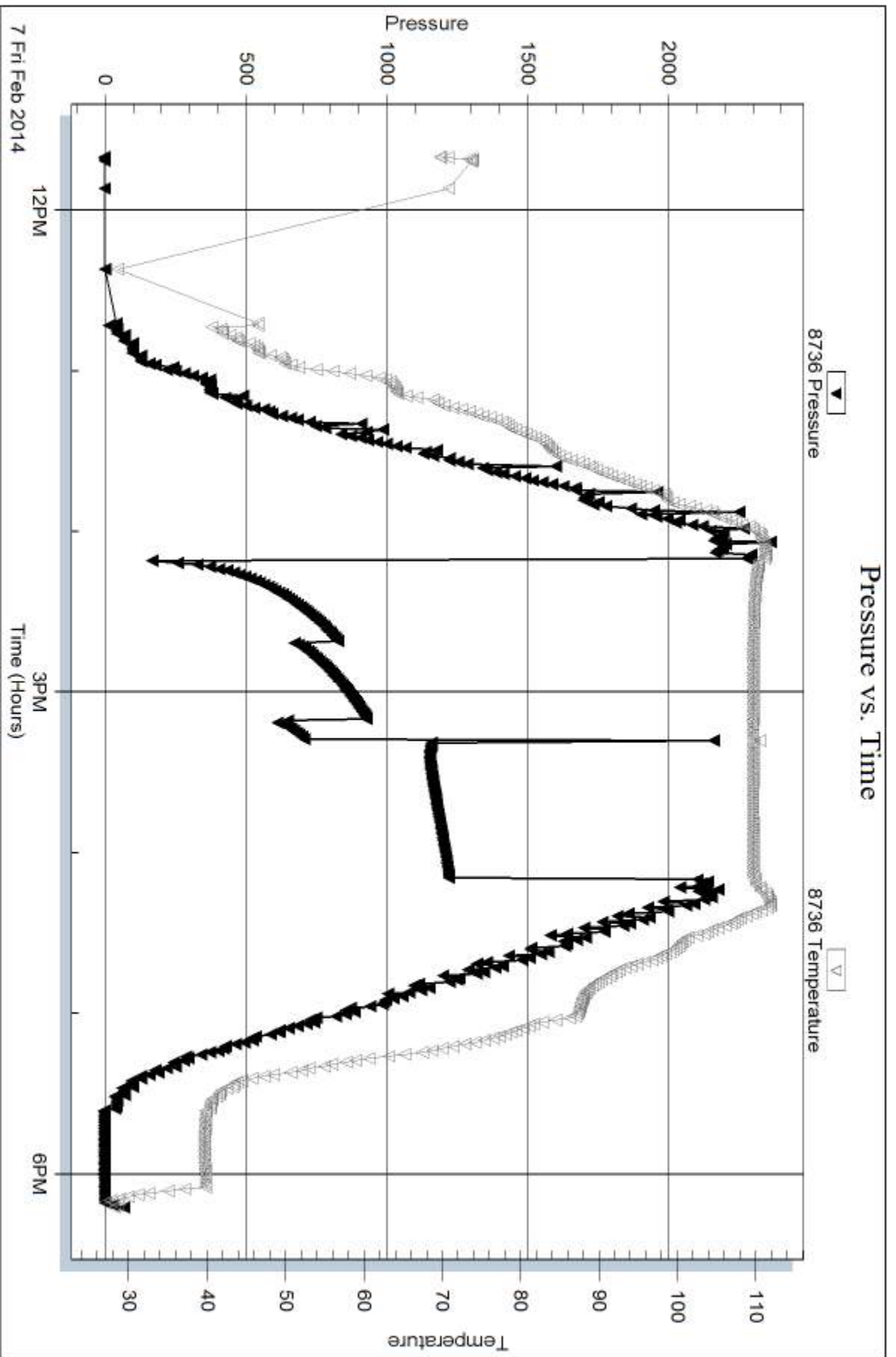
Num Gas Bombs: 0

Serial #:

Laboratory Name:

Laboratory Location:

Recovery Comments:



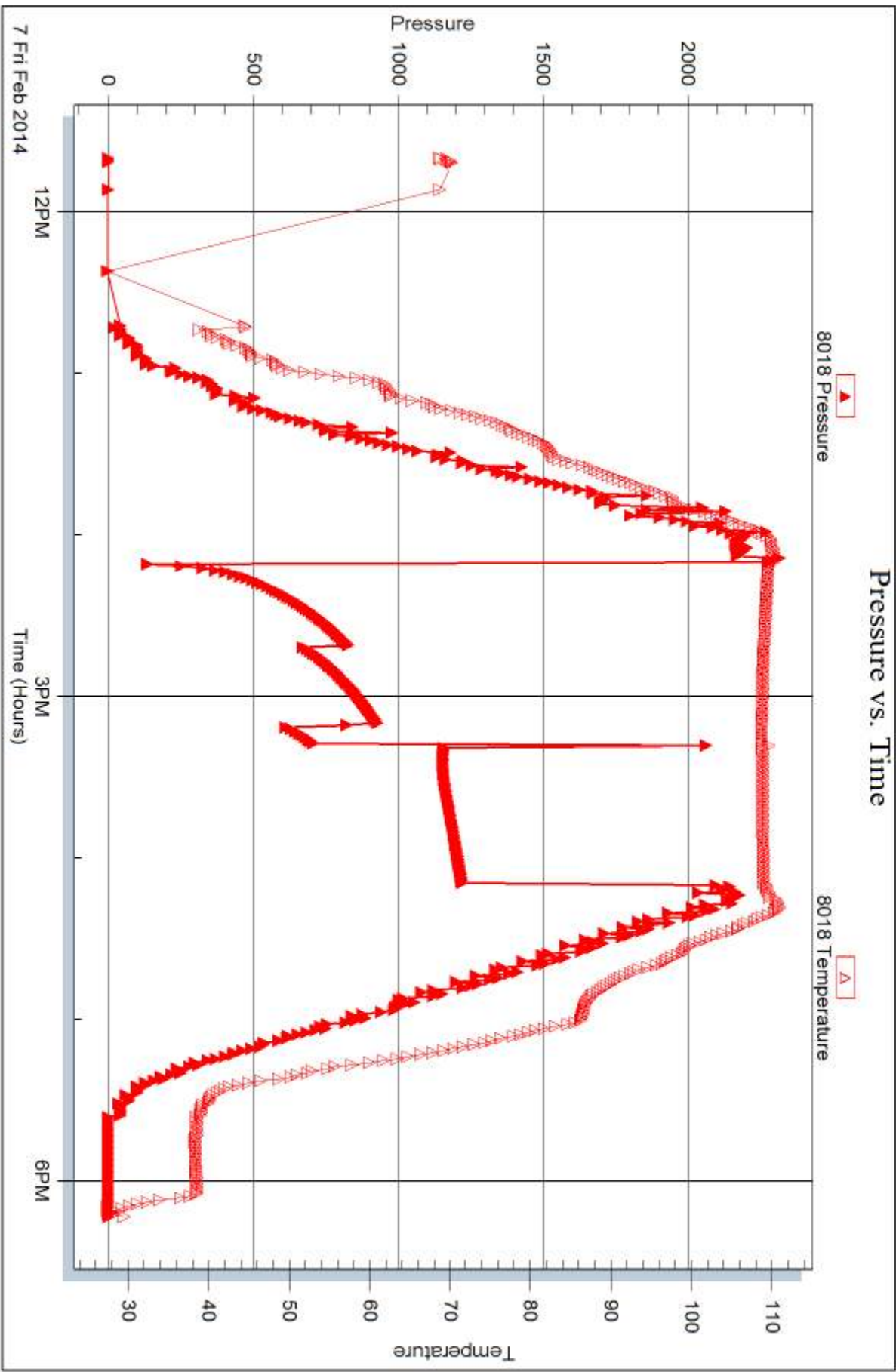
Serial #: 8018

Inside

American Warrior Inc.

Ben Hinnergardt #3

DST Test Number: 4



Tribble Testing, Inc

Ref. No: 56209

Printed: 2014.02.11 @ 08:38:03



DRILL STEM TEST REPORT

Prepared For: **American Warrior Inc.**

PO Box 399
Garden City KS 67846

ATTN: Jason Alm

Ben Hinnergardt #3

12-20s-21w Ness,KS

Start Date: 2014.02.08 @ 01:55:00

End Date: 2014.02.08 @ 09:20:45

Job Ticket #: 56210 DST #: 5

Trilobite Testing, Inc
PO Box 362 Hays, KS 67601
ph: 785-625-4778 fax: 785-625-5620

Printed: 2014.02.11 @ 08:37:23



**TRILOBITE
TESTING, INC**

DRILL STEM TEST REPORT

American Warrior Inc.
PO Box 399
Garden City KS 67846
ATTN: Jason Alm

12-20s-21w Ness, KS
Ben Hinnergardt #3
Job Ticket: 56210 **DST#: 5**
Test Start: 2014.02.08 @ 01:55:00

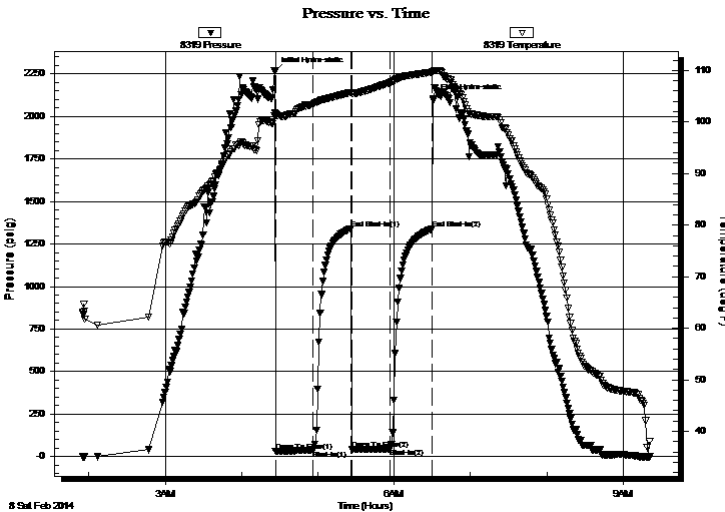
GENERAL INFORMATION:

Formation: **Miss**
Deviated: No Whipstock: ft (KB)
Time Tool Opened: 04:26:30
Time Test Ended: 09:20:45
Interval: **4395.00 ft (KB) To 4402.00 ft (KB) (TVD)**
Total Depth: 4402.00 ft (KB) (TVD)
Hole Diameter: 7.88 inches Hole Condition: Fair
Test Type: Conventional Bottom Hole (Reset)
Tester: Brett Dickinson
Unit No: 59
Reference Elevations: 2236.00 ft (KB)
2230.00 ft (CF)
KB to GR/CF: 6.00 ft

Serial #: 8319 Outside
Press@RunDepth: 46.37 psig @ 4399.00 ft (KB) Capacity: 8000.00 psig
Start Date: 2014.02.08 End Date: 2014.02.08 Last Calib.: 2014.02.08
Start Time: 01:55:05 End Time: 09:20:44 Time On Btm: 2014.02.08 @ 04:26:00
Time Off Btm: 2014.02.08 @ 06:31:00

TEST COMMENT: IF-1" blow
IS-No blow
FF-1/2" blow
FS-No blow

PRESSURE SUMMARY



Time (Min.)	Pressure (psig)	Temp (deg F)	Annotation
0	2260.38	101.71	Initial Hydro-static
1	30.68	101.22	Open To Flow (1)
30	37.67	103.43	Shut-In(1)
60	1340.70	105.72	End Shut-In(1)
61	41.53	105.44	Open To Flow (2)
91	46.37	107.63	Shut-In(2)
124	1338.16	109.67	End Shut-In(2)
125	2104.56	109.84	Final Hydro-static

Recovery

Length (ft)	Description	Volume (bbl)
60.00	Mud	0.30

* Recovery from multiple tests

Gas Rates

Choke (inches)	Pressure (psig)	Gas Rate (Mcf/d)



**TRILOBITE
TESTING, INC**

DRILL STEM TEST REPORT

TOOL DIAGRAM

American Warrior Inc.

12-20s-21w Ness, KS

PO Box 399
Garden City KS 67846

Ben Hinnergardt #3

Job Ticket: 56210

DST#: 5

ATTN: Jason Alm

Test Start: 2014.02.08 @ 01:55:00

Tool Information

Drill Pipe:	Length: 4190.00 ft	Diameter: 3.80 inches	Volume: 58.77 bbl	Tool Weight:	2500.00 lb
Heavy Wt. Pipe:	Length: ft	Diameter: 2.70 inches	Volume: - bbl	Weight set on Packer:	25000.00 lb
Drill Collar:	Length: 184.00 ft	Diameter: 2.25 inches	Volume: 0.90 bbl	Weight to Pull Loose:	80000.00 lb
			<u>Total Volume:</u>	Tool Chased	0.00 ft
Drill Pipe Above KB:	7.00 ft			String Weight: Initial	68000.00 lb
Depth to Top Packer:	4395.00 ft			Final	68000.00 lb
Depth to Bottom Packer:	ft				
Interval between Packers:	7.00 ft				
Tool Length:	35.00 ft				
Number of Packers:	2	Diameter:	6.75 inches		

Tool Comments:

Tool Description	Length (ft)	Serial No.	Position	Depth (ft)	Accum. Lengths
------------------	-------------	------------	----------	------------	----------------

Shut In Tool	5.00			4372.00	
Hydraulic tool	5.00			4377.00	
Jars	5.00			4382.00	
Safety Joint	3.00			4385.00	
Packer	5.00			4390.00	28.00 Bottom Of Top Packer
Packer	5.00			4395.00	
Stubb	1.00			4396.00	
Perforations	3.00			4399.00	
Recorder	0.00	8018	Inside	4399.00	
Recorder	0.00	8319	Outside	4399.00	
Bullnose	3.00			4402.00	7.00 Bottom Packers & Anchor

Total Tool Length: 35.00



**TRILOBITE
TESTING, INC**

DRILL STEM TEST REPORT

FLUID SUMMARY

American Warrior Inc.

12-20s-21w Ness, KS

PO Box 399
Garden City KS 67846

Ben Hinnergardt #3

Job Ticket: 56210

DST#: 5

ATTN: Jason Alm

Test Start: 2014.02.08 @ 01:55:00

Mud and Cushion Information

Mud Type: Gel Chem

Cushion Type:

Oil API:

deg API

Mud Weight: 9.00 lb/gal

Cushion Length:

ft

Water Salinity:

ppm

Viscosity: 42.00 sec/qt

Cushion Volume:

bbbl

Water Loss: 10.39 in³

Gas Cushion Type:

Resistivity: ohm.m

Gas Cushion Pressure:

psig

Salinity: 5200.00 ppm

Filter Cake: inches

Recovery Information

Recovery Table

Length ft	Description	Volume bbl
60.00	Mud	0.295

Total Length: 60.00 ft Total Volume: 0.295 bbl

Num Fluid Samples: 0

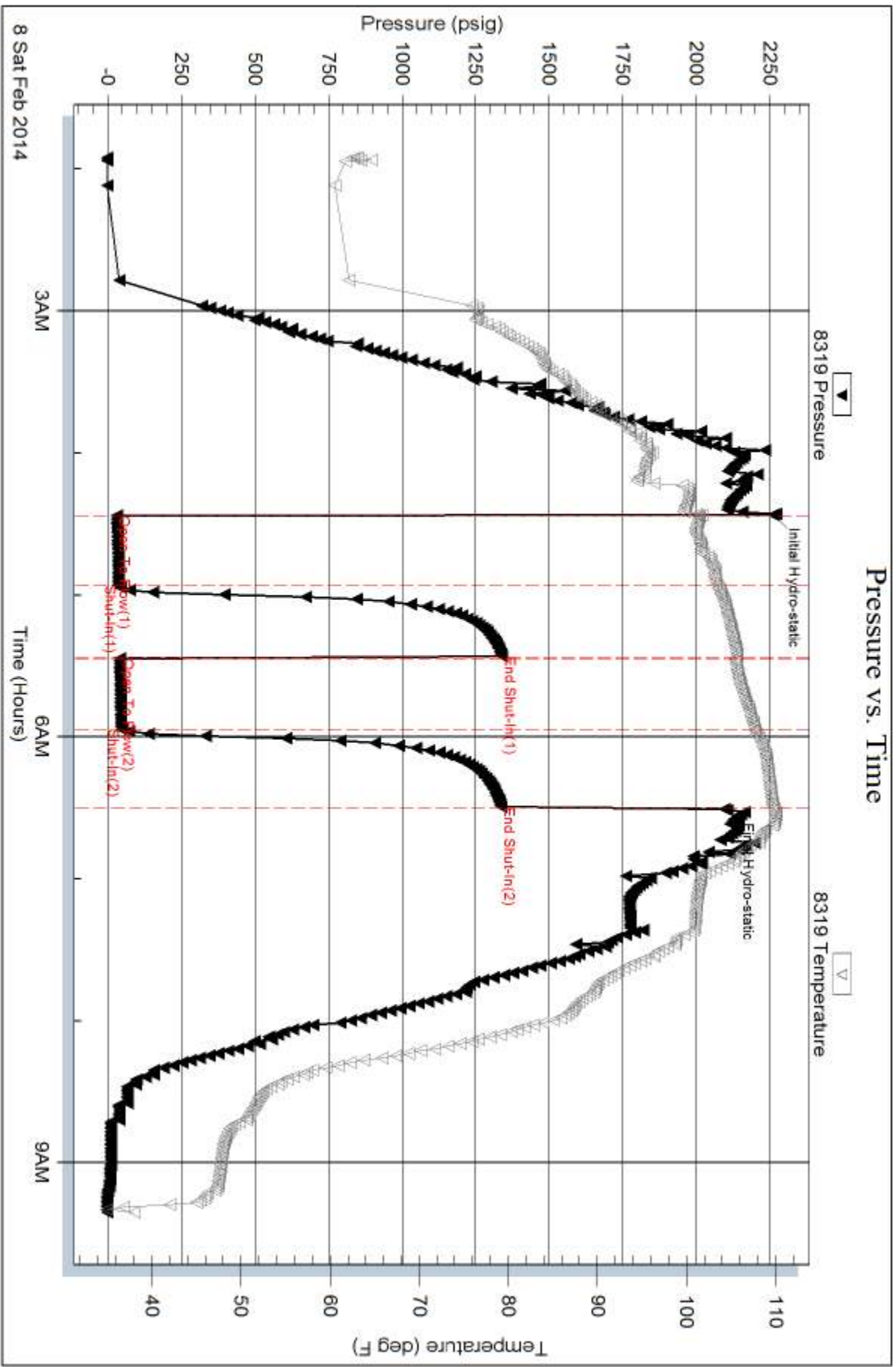
Num Gas Bombs: 0

Serial #:

Laboratory Name:

Laboratory Location:

Recovery Comments:



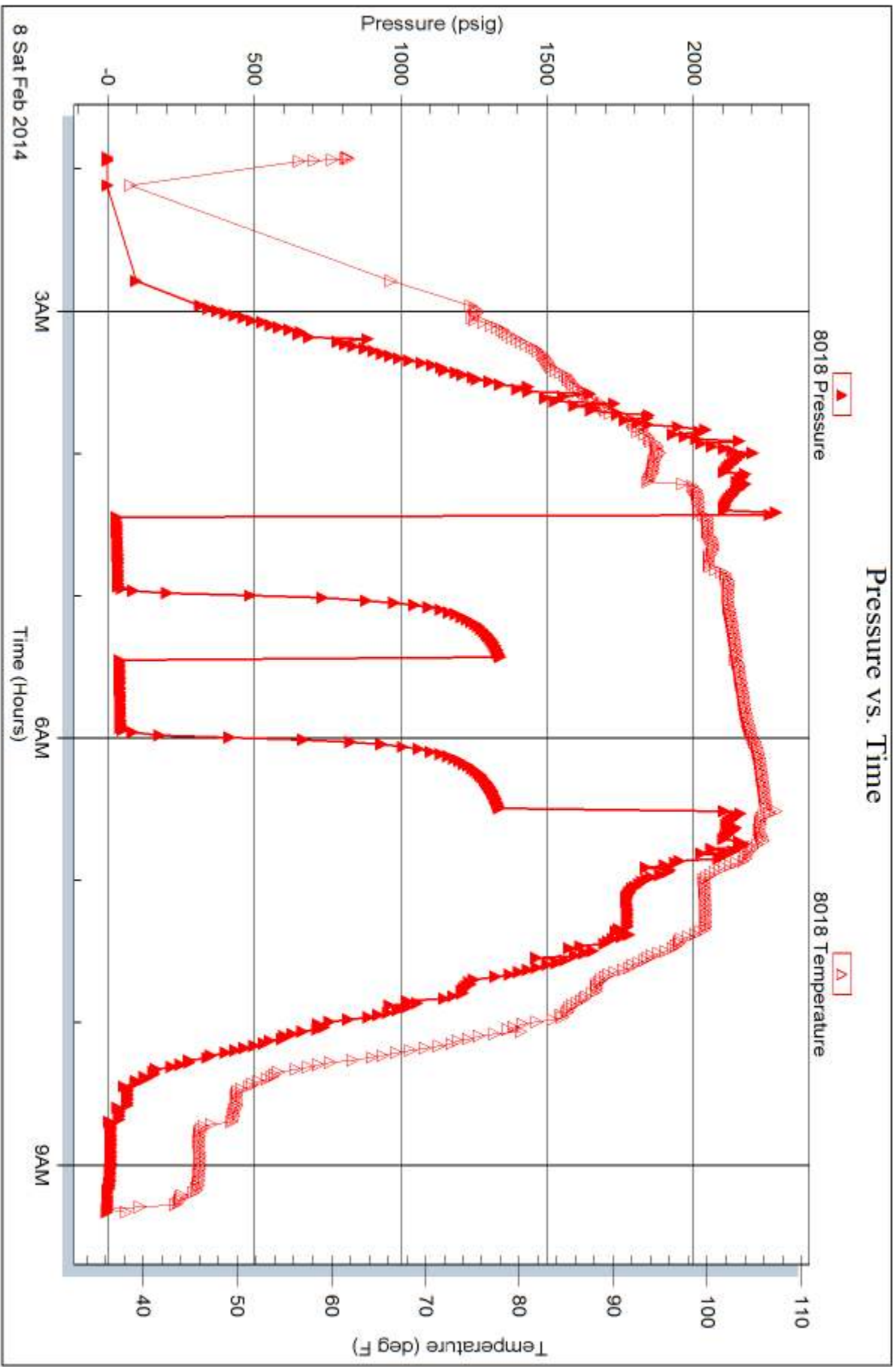
Serial #: 8018

Inside

American Warrior Inc.

Ben Hinnergardt #3

DST Test Number: 5



Tribble Testing, Inc

Ref. No: 56210

Printed: 2014.02.11 @ 08:37:25



TRILOBITE TESTING INC.

1515 Commerce Parkway • Hays, Kansas 67601

Test Ticket

NO. **56206**

4/10

Well Name & No. Ben Hinnergardt Well #3 Test No. 1 Date 2/3/14
 Company American Warrior, Inc. Elevation 2236 KB 2230 GL
 Address PO Box 399 Garden City KS 67846
 Co. Rep / Geo. Jason Alm Rig Petromark 1
 Location: Sec. 12 Twp. 20s Rge. 21w Co. Ness State KS

Interval Tested 4329 - 4389 Zone Tested Miss
 Anchor Length 60 Drill Pipe Run _____ Mud Wt. 9.5
 Top Packer Depth 4324 Drill Collars Run _____ Vis 60
 Bottom Packer Depth 4329 Wt. Pipe Run — WL 7.2
 Total Depth 4389 Chlorides 4,700 ppm System LCM —
 Blow Description IF - 1/2 blow
IST -
FF - No blow
FST -

Rec	Feet of	%gas	%oil	%water	%mud
<u>5</u>	<u>oil spotted Mud</u>				
Rec	Feet of	%gas	%oil	%water	%mud
Rec	Feet of	%gas	%oil	%water	%mud
Rec	Feet of	%gas	%oil	%water	%mud
Rec	Feet of	%gas	%oil	%water	%mud

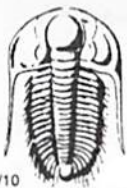
Rec Total 5 BHT 609 Gravity _____ API RW _____ @ _____ °F Chlorides _____ ppm

(A) Initial Hydrostatic <u>2,261</u>	<input checked="" type="checkbox"/> Test <u>1250</u>	T-On Location <u>20:15</u>
(B) First Initial Flow <u>26</u>	<input checked="" type="checkbox"/> Jars <u>250</u>	T-Started <u>20:55</u>
(C) First Final Flow <u>33</u>	<input checked="" type="checkbox"/> Safety Joint <u>75</u>	T-Open <u>23:46</u>
(D) Initial Shut-In <u>235</u>	<input type="checkbox"/> Circ Sub _____	T-Pulled <u>2:46</u>
(E) Second Initial Flow <u>33</u>	<input type="checkbox"/> Hourly Standby _____	T-Out <u>4:45</u>
(F) Second Final Flow <u>35</u>	<input checked="" type="checkbox"/> Mileage <u>110 RT</u> 170.50	Comments _____
(G) Final Shut-In <u>133</u>	<input type="checkbox"/> Sampler _____	<input type="checkbox"/> Ruined Shale Packer _____
(H) Final Hydrostatic <u>2,210</u>	<input type="checkbox"/> Straddle _____	<input type="checkbox"/> Ruined Packer _____
Initial Open <u>45</u>	<input type="checkbox"/> Shale Packer _____	<input type="checkbox"/> Extra Copies _____
Initial Shut-In <u>45</u>	<input type="checkbox"/> Extra Packer _____	Sub Total <u>0</u>
Final Flow <u>45</u>	<input type="checkbox"/> Extra Recorder _____	Total <u>1745.50</u>
Final Shut-In <u>45</u>	<input type="checkbox"/> Day Standby _____	MP/DST Disc't _____
	<input type="checkbox"/> Accessibility _____	
	Sub Total <u>1745.50</u>	

Approved By _____

Our Representative Butt Dickson

Trilobite Testing Inc. shall not be liable for damaged of any kind of the property or personnel of the one for whom a test is made, or for any loss suffered or sustained, directly or indirectly, through the use of its equipment, or its statements or opinion concerning the results of any test, tools lost or damaged in the hole shall be paid for at cost by the party for whom the test is made.



TRILOBITE TESTING INC.

1515 Commerce Parkway • Hays, Kansas 67601

Test Ticket

NO. 56207

Well Name & No. Ben Hinnergardt #3 Test No. 2 Date 2/4/14
 Company American Warrior, Inc Elevation 2236 KB 2230 GL
 Address _____
 Co. Rep / Geo. Jason Alm Rig Petro mark #1
 Location: Sec. 12 Twp. 20s Rge. 21w Co. Ncs S State KS

Interval Tested 4328-4397 Zone Tested Miss
 Anchor Length 69 Drill Pipe Run _____ Mud Wt. 9.5
 Top Packer Depth 4323 Drill Collars Run _____ Vis 60
 Bottom Packer Depth 4328 Wt. Pipe Run _____ WL 7.2
 Total Depth 4397 Chlorides 4,700 ppm System LCM _____
 Blow Description 7F - lin blow
ISF - No blow
FF - No blow

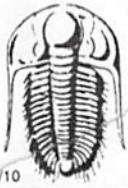
Rec	Feet of	%gas	%oil	%water	%mud
<u>10</u>	<u>oil spotted mud</u>				
	<u>plugged</u>				

Rec Total 10 BHT _____ Gravity _____ API RW _____ @ _____ °F Chlorides _____ ppm

(A) Initial Hydrostatic _____ Test 1050 T-On Location 10:20
 (B) First Initial Flow _____ Jars 250 T-Started 10:35
 (C) First Final Flow _____ Safety Joint 75 T-Open 13:33
 (D) Initial Shut-In _____ Circ Sub _____ T-Pulled 14:48
 (E) Second Initial Flow _____ Hourly Standby _____ T-Out 17:00
 (F) Second Final Flow _____ Mileage 110.1 170.50 Comments _____
 (G) Final Shut-In _____ Sampler _____
 (H) Final Hydrostatic _____ Straddle _____ Ruined Shale Packer _____
 Shale Packer _____ Ruined Packer _____
 Extra Packer _____ Extra Copies _____
 Initial Open 30 Extra Recorder _____ Sub Total 0
 Initial Shut-In 30 Day Standby _____ Total 1545.50
 Final Flow 15 Accessibility _____ MP/DST Disc't _____
 Final Shut-In _____ Sub Total 1545.50

Approved By _____ Our Representative [Signature]

Trilobite Testing Inc. shall not be liable for damaged of any kind of the property or personnel of the one for whom a test is made, or for any loss suffered or sustained, directly or indirectly, through the use of its equipment, or its statements or opinion concerning the results of any test, tools lost or damaged in the hole shall be paid for at cost by the party for whom the test is made.



TRILOBITE TESTING INC.

1515 Commerce Parkway • Hays, Kansas 67601

Test Ticket

NO. **56208**

Well Name & No. Ben Hinnergardt #3 Test No. 3 Date 2/6/14
 Company American Warrior, Inc. Elevation 2236 KB 2230 GL
 Address _____
 Co. Rep / Geo. Jason Alm Rig Petromark #1
 Location: Sec. 12 Twp. 20s Rge. 21w Co. Ness State KS

Interval Tested 4328-4399 Zone Tested Miss
 Anchor Length 71 Drill Pipe Run _____ Mud Wt. _____
 Top Packer Depth 4323 Drill Collars Run _____ Vis _____
 Bottom Packer Depth 4328 Wt. Pipe Run — WL _____
 Total Depth 4399 Chlorides _____ ppm System LCM _____
 Blow Description IF - 1/4 in blow
ISI - No blow
FF - No blow flush tool 1 in blow died to 3/4 in
FSI - No blow

Rec	Feet of	%gas	%oil	%water	%mud
<u>10</u>	<u>oil spotted mud</u>				
Rec _____	Feet of _____	%gas	%oil	%water	%mud
Rec _____	Feet of _____	%gas	%oil	%water	%mud
Rec _____	Feet of _____	%gas	%oil	%water	%mud
Rec _____	Feet of _____	%gas	%oil	%water	%mud

Rec Total 10 BHT _____ Gravity _____ API RW _____ @ _____ °F Chlorides _____ ppm

(A) Initial Hydrostatic _____ Test 1050 T-On Location 22:55
 (B) First Initial Flow _____ Jars 250 T-Started 00:10
 (C) First Final Flow _____ Safety Joint 75 T-Open 5:40
 (D) Initial Shut-In _____ Circ Sub _____ T-Pulled 7:40
 (E) Second Initial Flow _____ Hourly Standby _____ T-Out 10:05
 (F) Second Final Flow _____ Mileage 110-T 170.50 Comments _____
 (G) Final Shut-In _____ Sampler _____
 (H) Final Hydrostatic _____ Straddle _____
 Shale Packer _____ Ruined Shale Packer _____
 Extra Packer _____ Ruined Packer _____
 Extra Recorder _____
 Day Standby _____
 Accessibility _____

Initial Open 30
 Initial Shut-In 30
 Final Flow 30
 Final Shut-In 30

Sub Total 1545.50
 Total 1545.50
 MP/DST Disc't _____

Approved By _____ Our Representative Brett Dickman

Trilobite Testing Inc. shall not be liable for damaged of any kind of the property or personnel of the one for whom a test is made, or for any loss suffered or sustained, directly or indirectly, through the use of its equipment, or its statements or opinion concerning the results of any test, tools lost or damaged in the hole shall be paid for at cost by the party for whom the test is made.



TRILOBITE TESTING INC.

1515 Commerce Parkway • Hays, Kansas 67601

Test Ticket

NO. **56209**

Well Name & No. Ben Hinnergardt #3 Test No. 4 Date 2/2/14
 Company American Warrior, Inc. Elevation 2236 KB 2230 GL
 Address _____
 Co. Rep / Geo. Jason Alm Rig Petromark #1
 Location: Sec. 12 Twp. 20 Rge. 21w Co. Ness State KS

Interval Tested 4329-4399 Zone Tested Miss
 Anchor Length 20 Drill Pipe Run _____ Mud Wt. _____
 Top Packer Depth 4324 Drill Collars Run _____ Vis _____
 Bottom Packer Depth 4329 Wt. Pipe Run _____ WL _____
 Total Depth 4399 Chlorides _____ ppm System LCM _____
 Blow Description IF - 1 3/4 died back to 1 1/2
ISI - No blow
FF - weak surface flush tool lin died

Rec	Feet of	%gas	%oil	%water	%mud

Rec Total _____ BHT _____ Gravity _____ API RW _____ @ _____ °F Chlorides _____ ppm

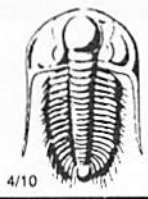
(A) Initial Hydrostatic _____ Test 1050 T-On Location _____
 (B) First Initial Flow _____ Jars 250 T-Started 11:40
 (C) First Final Flow _____ Safety Joint 75 T-Open 14:08
 (D) Initial Shut-In _____ Circ Sub _____ T-Pulled 16:08
 (E) Second Initial Flow _____ Hourly Standby _____ T-Out 15:10
 (F) Second Final Flow _____ Mileage _____ Comments _____
 (G) Final Shut-In _____ Sampler _____
 (H) Final Hydrostatic _____ Straddle _____
 Shale Packer _____
 Extra Packer _____
 Extra Recorder _____
 Day Standby _____
 Accessibility _____
 Sub Total 1375

Initial Open 30
 Initial Shut-In 30
 Final Flow 30
 Final Shut-In 30

Sub Total 1375
 Total 1375
 MP/DST Disc't _____

Approved By _____ Our Representative Ben Alm

Trilobite Testing Inc. shall not be liable for damaged of any kind of the property or personnel of the one for whom a test is made, or for any loss suffered or sustained, directly or indirectly, through the use of its equipment, or its statements or opinion concerning the results of any test, tools lost or damaged in the hole shall be paid for at cost by the party for whom the test is made.



TRILOBITE TESTING INC.

1515 Commerce Parkway • Hays, Kansas 67601

Test Ticket

NO. **56210**

Well Name & No. Ben Hinnergardt #3 Test No. 5 Date 2/8/14
 Company American Warrior, Inc. Elevation 2236 KB 2230 GL
 Address _____
 Co. Rep / Geo. Jason Alm Rig Petromack #1
 Location: Sec. 12 Twp. 20 Rge. 21w Co. Ness State KS

Interval Tested 4395 - 4402 Zone Tested Mis 5
 Anchor Length 7 Drill Pipe Run _____ Mud Wt. 8.9
 Top Packer Depth 4390 Drill Collars Run 186 Vis 42
 Bottom Packer Depth 4395 Wt. Pipe Run _____ WL 10.4
 Total Depth 4402 Chlorides 5,200 ppm System LCM _____
 Blow Description IF - 1 in blow
ISF - No blow
FF - 1/2 in blow
FSF - No blow

Rec	Feet of	%gas	%oil	%water	%mud
<u>60</u>	<u>Mud</u>				
_____	_____				
_____	_____				
_____	_____				
_____	_____				

Rec Total 60 BHT 110 Gravity _____ API RW _____ @ _____ °F Chlorides _____ ppm

(A) Initial Hydrostatic <u>2260</u>	<input checked="" type="checkbox"/> Test <u>1250</u>	T-On Location <u>1:15</u>
(B) First Initial Flow <u>31</u>	<input checked="" type="checkbox"/> Jars <u>250</u>	T-Started <u>1:55</u>
(C) First Final Flow <u>38</u>	<input checked="" type="checkbox"/> Safety Joint <u>75</u>	T-Open <u>4:23</u>
(D) Initial Shut-In <u>13 41</u>	<input type="checkbox"/> Circ Sub _____	T-Pulled <u>6:23</u>
(E) Second Initial Flow <u>42</u>	<input type="checkbox"/> Hourly Standby _____	T-Out _____
(F) Second Final Flow <u>46</u>	<input checked="" type="checkbox"/> Mileage <u>170.50</u>	Comments _____
(G) Final Shut-In <u>13 38</u>	<input type="checkbox"/> Sampler _____	
(H) Final Hydrostatic <u>21 05</u>	<input type="checkbox"/> Straddle _____	<input type="checkbox"/> Ruined Shale Packer _____
	<input type="checkbox"/> Shale Packer _____	<input type="checkbox"/> Ruined Packer _____
Initial Open <u>30</u>	<input type="checkbox"/> Extra Packer _____	<input type="checkbox"/> Extra Copies _____
Initial Shut-In <u>30</u>	<input type="checkbox"/> Extra Recorder _____	Sub Total <u>0</u>
Final Flow <u>30</u>	<input type="checkbox"/> Day Standby _____	Total <u>1745.50</u>
Final Shut-In <u>30</u>	<input type="checkbox"/> Accessibility _____	MP/DST Disc't _____
	Sub Total <u>1745.50</u>	

Approved By _____ Our Representative Ben Alm

Trilobite Testing Inc. shall not be liable for damaged of any kind of the property or personnel of the one for whom a test is made, or for any loss suffered or sustained, directly or indirectly, through the use of its equipment, or its statements or opinion concerning the results of any test, tools lost or damaged in the hole shall be paid for at cost by the party for whom the test is made.