

Adam Eldani Geo-Log/Report

WellSight Systems

Scale 1:240 (5"=100') Imperial

Measured Depth Log

Well Name: #1 Martin Trust
Location: SEC 1-TOWNSHIP 16S- RANGE 34W SCOTT COUNTY
License Number: API 15-171-21025 Region: KANSAS
Spud Date: 2/10/2014 Drilling Completed: 2/22/2014
Surface Coordinates: 2695' FNL & 1420' FEL
55' S & 100' W of W/2 Section 1-16S-34W
Bottom Hole Deviation Surveys are detailed through out the Geo-Report.
Coordinates:
Ground Elevation (ft): 3095' K.B. Elevation (ft): 3100'
Logged Interval (ft): 3800 To: 4920 Total Depth (ft): 4923
Formation: Mississippian
Type of Drilling Fluid: Mud-Co Chemical

Printed by MUD.LOG from WellSight Systems 1-800-447-1534 www.WellSight.com

OPERATOR

Company: Ritchie Exploration Inc. (drilled by WW RIG# 2)
Address: 8100 E. 22nd ST. N. #700
Wichita, KS, 67278-3188

GEOLOGIST

Name: Adam M.A. Eldani
Company: Ritchie Exploration Inc.
Address: 8100 E. 22nd ST. N. #700
Wichita, KS, 67278-3188

Tops & Drill Report

TOPS: DRILLING REPORT

Sample Tops:

Anhydrite: 2460'+640	Anhydrite: 2460'+640
B/Anhydrite: 2481'+619	B/Anhydrite: 2479'+621
Stotler: 3624'-524	Stotler: 3626'-526
Heebner: 3992'-892	Heebner: 3993'-893
Toronto: 4012'-912	Toronto: 4014'-914
Lansing: 4042'-942	Lansing: 4038'-938
Muncie Sh: 4211'-1111	Muncie Sh: 4213'-1113
Stark Sh: 4302'-1202	Stark Sh: 4306'-1206
Hush. Sh: 4346'-1246	Hush. Sh: 4350'-1250
BKC: 4381'-1281	BKC: 4384'-1284
Marmaton: 4424'-1324	Marmaton: 4421'-1321
Altamont: 4434'-1334	Altamont: 4438'-1338
Pawnee: 4516'-1416	Pawnee: 4520'-1420
Myrick: 4560'-1460	Myrick: 4563'-1463
Fort Scott: 4572'-1472	Fort Scott: 4574'-1474
Cherokee: 4598'-1498	Cherokee: 4603'-1503
Johnson: 4693'-1593	Johnson: 4692'-1592
Morrow: 4719'-1619	Morrow: 4721'-1621
Mississippian: 4768'-1668	Mississippian: 4772'-1672
RTD: 4920'-1820	RTD: 4923'-1823

DAILY DRILLING REPORT:

DATE DEPTH:

2/10	Spud
2/11	320'
2/12	2260'
2/13	3305'
2/14	3945'
2/15	4148'
2/16	4277'
2/17	4305'
2/18	4375'
2/19	4470'
2/20	4507'
2/21	4780'
2/22	4920'

Misc.

All DST's info. are NEAR the correct log depth.

RIG: WW RIG #2
TOOL PUSHER: Lonnie Lang
MUD: MUD CO. (Tony Ison)
GAS DETECTOR: N/A

DRILL STEM TEST'S: Suprior Testing, Inc.

LOGS: NABORS (Jeff Groneweg)

OFFICE: PETER FIORINI

Comments

Moved in and rigged up. Spud at 5:00 p.m. Ran 5 jts used 23# 8-5/8" surface casing. Tally at 210.72', set at 219'. Cemented with 165 sacks common, 2% gel, 3% cc. Cement did circulate. Plug down at 10:00 p.m. Drilled out plug at 6:00 a.m. on 2/11/14.

After all Results of SAMPLE LOGGING, ELECTRIC LOGGING, AND ALL DST TESTS ANALYSIS & CALCULATIONS; It was ELECTED to PLUG & ABANDON.


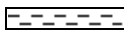

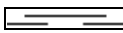

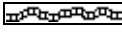


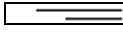
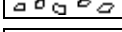


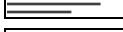


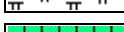

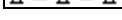



Plug and Abandon. 1st plug set at 2490' with 50 sacks 60/40 Poz, 4% gel, 1/4# flocele; 2nd plug set at 1650' with 80 sacks; 3rd plug set at 825' with 50 sacks; 4th plug set at 250' with 50 sacks; 5th plug set at 60' with 20 sacks; 250 total sacks. Plugged the rat hole with 30 sacks and the mouse hole with 20 sacks. Job complete at 12:00 p.m. Plugging orders by Nathan Willis with the KCC.

Well Log Surveys BY: NABORS. Compensated Denisty/ Neutron Log, Dual Induction.

SAMPLES WILL BE DEPOSITED WITH KANSAS GEOLOGICAL SURVEY.

RESPECTFULLY SUBMITTED
Adam M. A. Eldani

ROCK TYPES

	Anhy		Clyst		Igne		Shale		Till
	Bent		Coal		Lmst		Shcol		
	Brec		Congl		Meta		Shgy		
	Carb sh		Dol		Mrlst		Slst		
	Cht		Gyp		Salt		Ss		

ACCESSORIES

MINERAL

- Anhy
- Arggrn
- Arg
- Bent
- Bit
- Breclfrag
- Calc
- Carb
- Chtdk
- Chtlt
- Dol
- Feldspar
- Ferrpel
- Ferr
- Glau
- Gyp

- Hvymin
- Kaol
- Marl
- Minxl
- Nodule
- Phos
- Pyr
- Salt
- Sandy
- Silt
- Sil
- Sulphur
- Tuff

FOSSIL

- Algae
- Amph

- Belm
- Bioclst
- Brach
- Bryozoa
- Cephal
- Coral
- Crin
- Echin
- Fish
- Foram
- Fossil
- Fuss
- Gastro
- Oolite
- Oomold
- Ostra
- Pelec

- Pellet
- Pisolite
- Plant
- Strom

STRINGER

- Anhy
- Arg
- Bent
- Coal
- Dol
- Gyp
- Ls
- Mrst
- Sltstrg
- Ssstrg

TEXTURE

- Boundst
- Chalky
- Cryxln
- Earthy
- Finexln
- Grainst
- Lithogr
- Microxln
- Mudst
- Packst
- Wackest

OTHER SYMBOLS

POROSITY

- Earthy
- Fenest
- Fracture
- Inter
- Moldic
- Organic
- Pinpoint

- Vuggy

SORTING

- Well
- Moderate
- Poor

ROUNDING

- Rounded
- Subrnd
- Subang
- Angular

- Even
- Spotted
- Ques
- Dead

- Dst_alt
- Dst

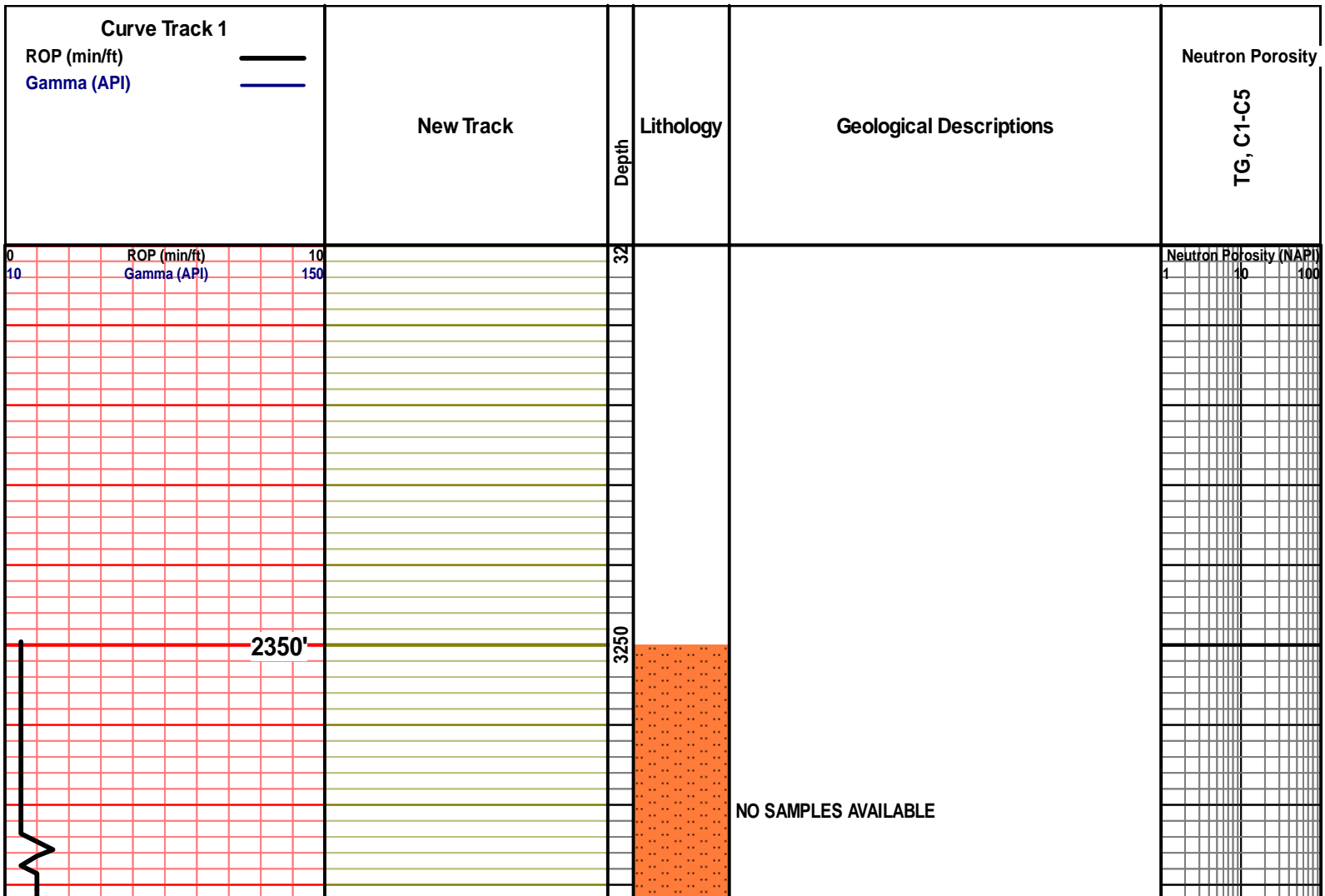
EVENT

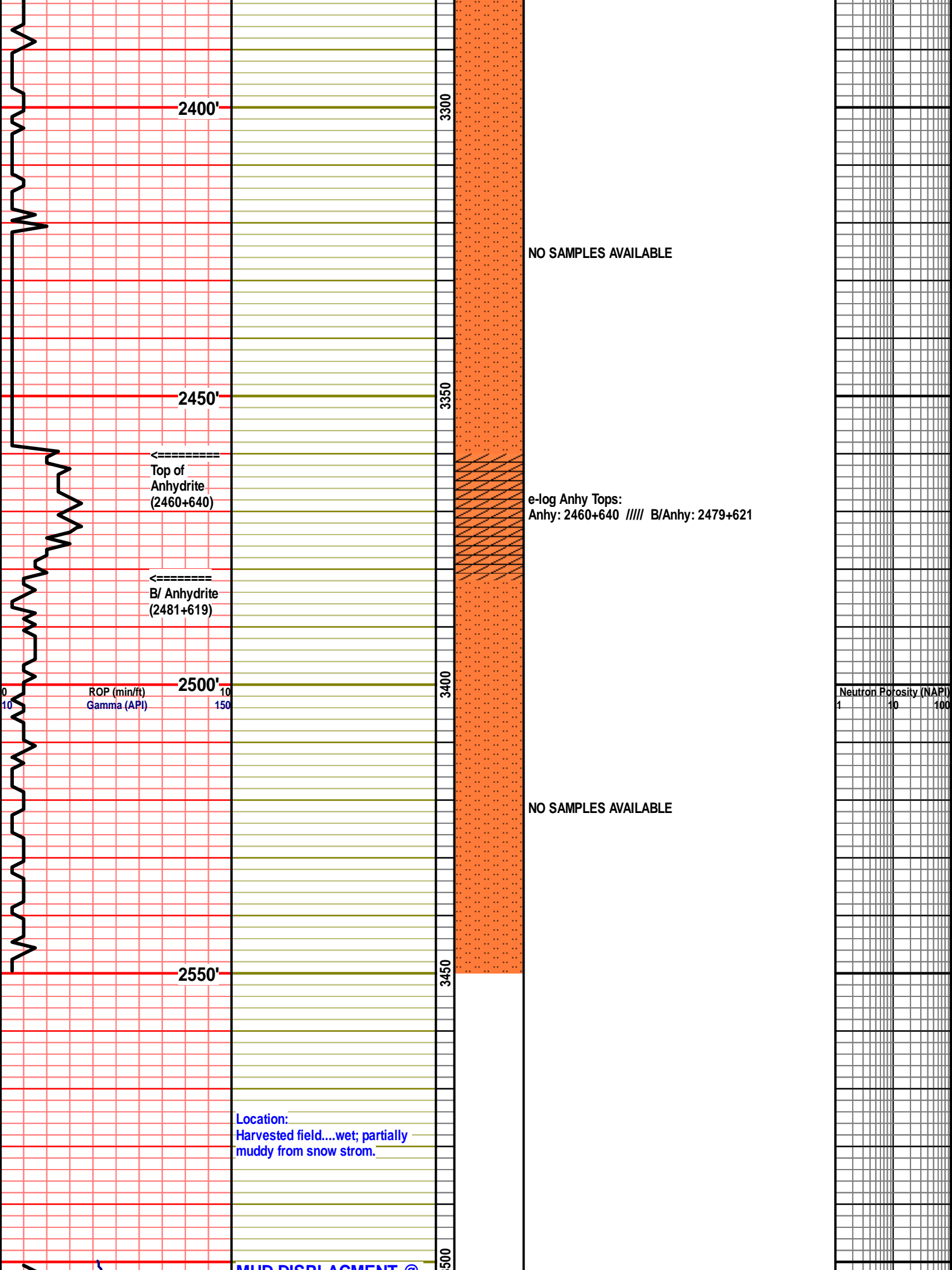
- Rft
- Sidewall

INTERVAL

- Core
- Dst

- OIL SHOW
- aimimg_1





2400'

3300

NO SAMPLES AVAILABLE

2450'

3350

←-----
Top of
Anhydrite
(2460+640)

e-log Anhy Tops:
Anhy: 2460+640 // // // B/Anhy: 2479+621

←-----
B/ Anhydrite
(2481+619)

2500'

3400

ROP (min/ft)
Gamma (API)

Neutron Porosity (NAPI)

NO SAMPLES AVAILABLE

2550'

3450

Location:
Harvested field...wet; partially
muddy from snow strom.

MUD DISPLACEMENT @

3500

MOD DISPLACEMENT @ 3500'

PUMP PRESSURE 950+

GEOLOGIST ON LOCATION @ 3707'

ROP (min/hr)
Gamma (API)

Stotler
3626'-526'

2/14/2014
mud info.
wt: 8.9
Funnel Vis. 55
Filtrate API: 6.4
Chloride 5,200
LCM # 2

NO SAMPLES AVAILABLE

NO SAMPLES AVAILABLE

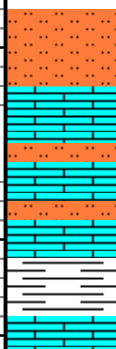
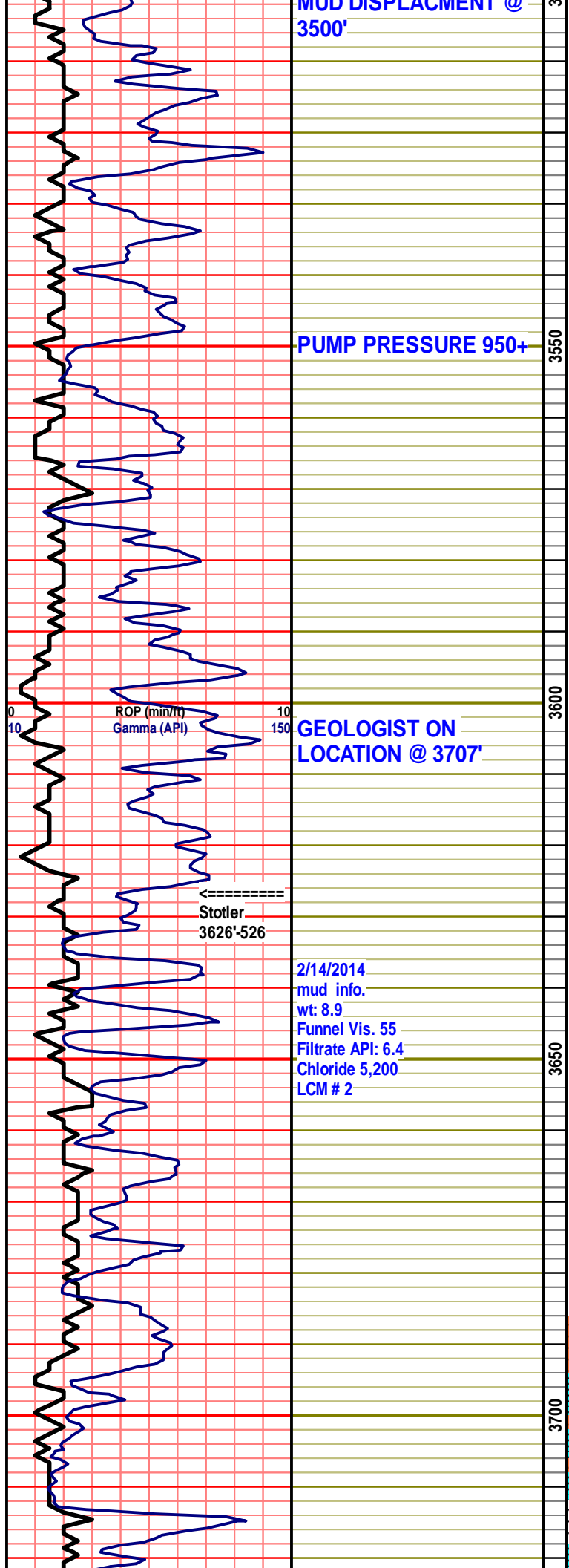
Neutron Porosity (NAPI)

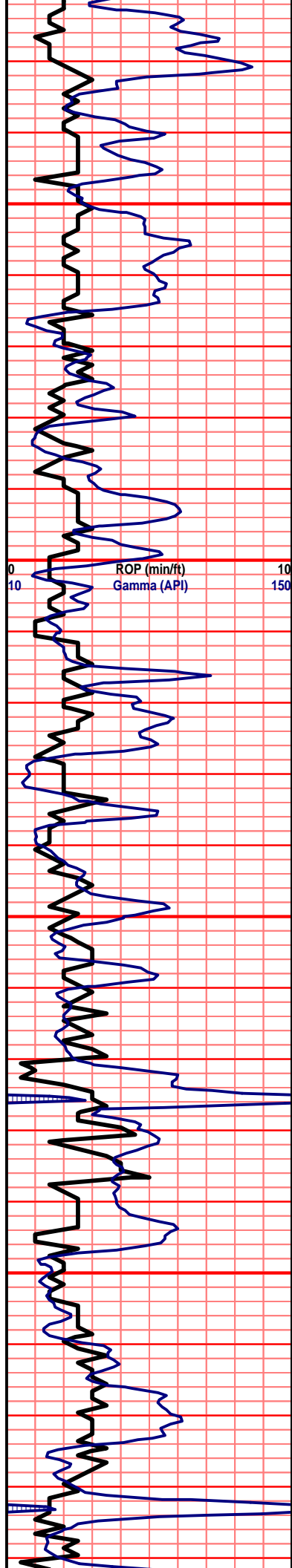
3710: lots of red sly stn, red sh tan-gry xln lm, foss, poor por, few drk crm v. fn grn pacj stn lm, fair intr prtcl por, no odr, ns.

3720: incrs in gry sh, incrs in lght crm xln lm, poor xln por, foss, no odr, ns.

3730: aa, sig incrs in wht chlk, incrs in gry foss xln lm, poor-no por, no odr, ns.

3740: mstly crm chlk-chlky lm, lots of v. fn grn pack





PUMP PRESSURE 950+

PUMP PRESSURE 950+



stn lm xln in prt, no odr, ns.

3750: incrs in gry slty shly lm, mstly crm fn xln lm, poor-no por, no odr, ns.

3760: aa, incrs in gry sh, incrs in wht chlk, no odr, ns.

3770: incrs in in gry inxln lm, popor-no inxln por, lots of crm-drty gry/crm xln lm, slightly foss, poor po, no odr, ns.

3780: mstly gry inxln lm, poor-no inxln por, gew crm inxln lm, poor por, no odr, ns.

3790: incrs in slty gry sh, ncrs in crmy chlk, no odr, ns.

3800: sig incrs in crm chlky lm, gry xln lm, incrs in red sh, no odr, ns.

3810: slight incrs in red sh, mstly crm-dr crm xln lm, some v. foss, sli ool, poor por, no odr, ns.

3820: slight incrs in gry sh, mostly crm chlky lm, few fn xln lm, no vis por, no odr, ns.

3830: incrs in red sh, mstly crm fn-cors xln lm, no odr, ns.

3840: crm-drk tan xln lm, some sli foss, poor-no por, no odr, ns.

3850: aa, sig incrs in wht-crm chlk, shw of v. drk gry sh, no odr, ns.

3860: crm-gry xln lm, poor por, sli foss in prt, no odr, ns.

3870: aa, sli incrs in brwn sh, sig incrs in chlk-chlky lm, no odr, ns.

3880: crm v. fn grn pack stn lm, poor-no por, lots of chlk, few lght crm chrt-chrty lm, no vis por, no odr, ns.

3890: aa, shw of blk-drk gry sh, lots of chlk, no odr, ns.

3900: shw of blk carb sh, lots of crm xln lm, shw of crm-gry chrt no vis por, no odr, ns.

3910: sh aa, incrs in gry slty sh, lots of crm chlky lm, no odr, ns.

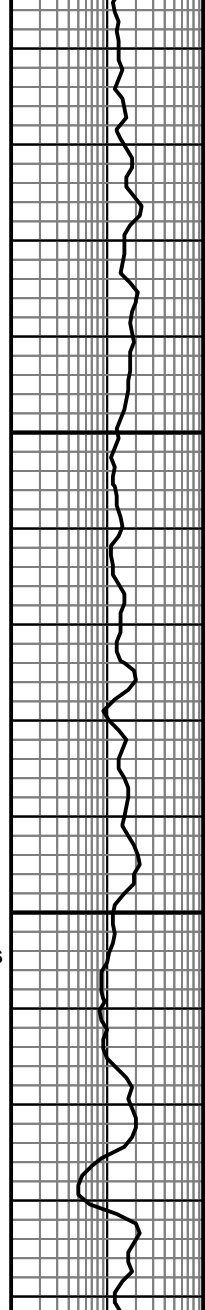
3920: aa, incrs in brwn sh, mstly wht foss chrt, no vis por, no odr, ns.

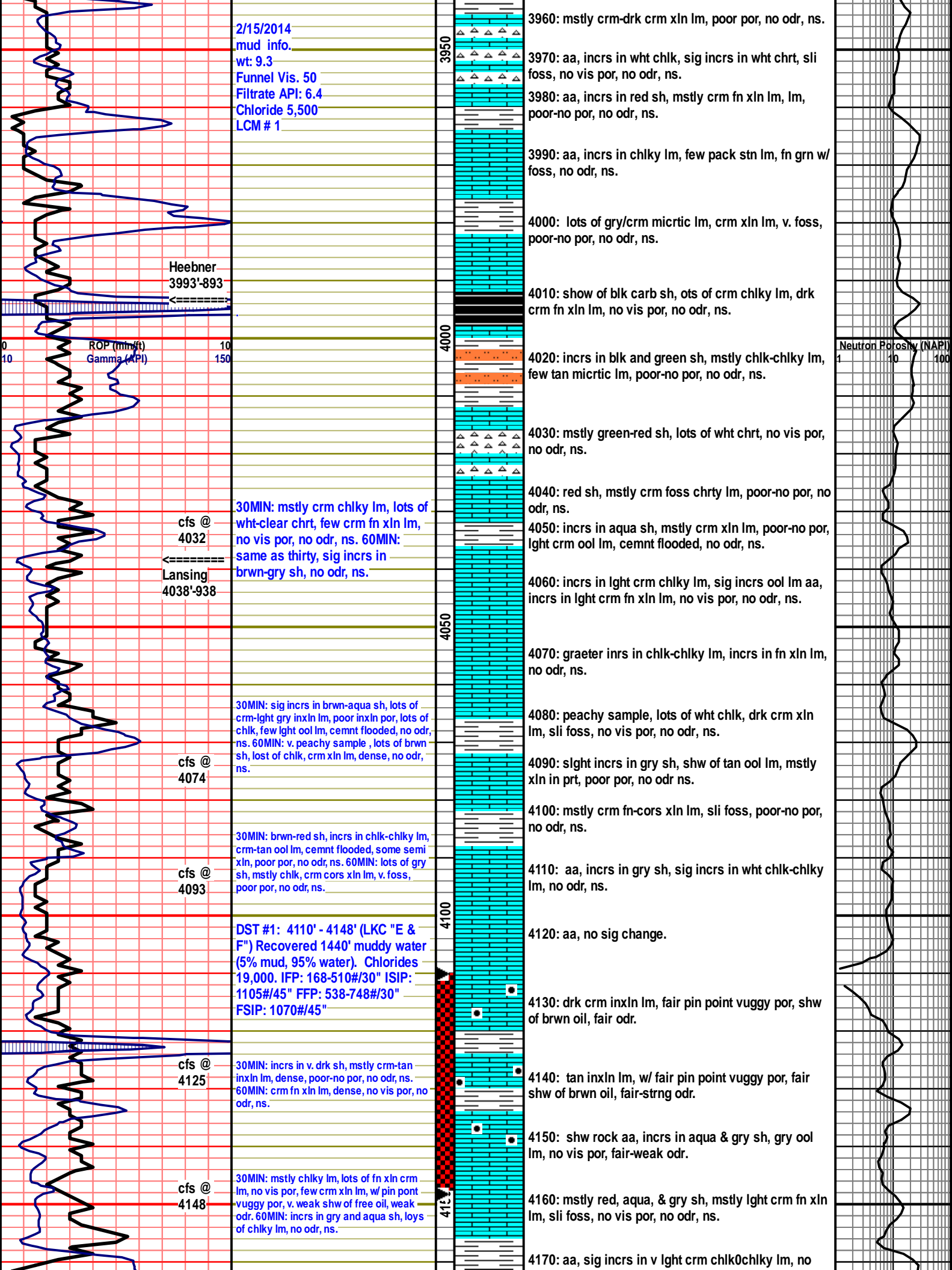
3930: incrs in v. lght gry slit stn, mostly tan inxln lm, sli foss, some w/ chrt nod, poor por, no odr, ns.

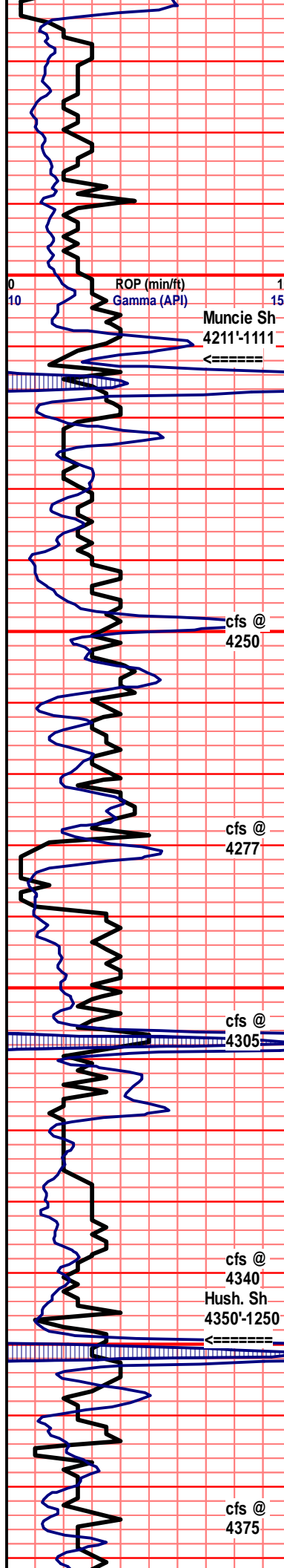
3940: incrs in brwn sh, incrs in wht chlk, mstly crm-gry foss lm, well cemntd, poor por, no odr, ns.

3950: crm xln lm, poor por, incrs in v. lght crm chrty lm, sli foss, no vis por, no odr, ns.

Neutron Porosity (NAPI)
1 10 100







2/16/2014
mud info.
wt: 9.4
Funnel Vis. 55
Filtrate API: 7.2
Chloride 6,100
LCM # 1/2

2/17/2014
mud info.
wt: 9.4
Funnel Vis. 55
Filtrate API: 8.0
Chloride 6,500
LCM # 1

30MIN: sig incrs in gry sh, mstly wht chlk, lots of crm-tan inxln lm, poor por, no odr, ns. 60MIN: same as thirty min sample, incrs in brwn sh, no odr, ns.

DST #2: 4243' - 4277' (LKC "I") Recovered 61' very lightly oil spotted mud and 122' mud.
Total Fluid 183'. IFP: 42-88#/30" ISIP: 1238#/45" FFP: 94-114#/45" FSIP: 1226#/60"

30MIN: lots of chlk, lght crm pack stn lm, fair intr prtcl por, strng shw of brwn oil, few tan xln lm, w/ fair xln por, shw of brwn oil, strng odr. 60MIN: v. chlky, incrs in gry sh, lots of crm-brwn xln lm, dense, no vis por, nsfo, weak odr.

DST #3: 4267' - 4305' (LKC "J") Recovered 121' oil spotted muddy water (13% mud, 87% water) and 245' oil spotted water. Chlorides 24,000.
Total Fluid 366'. IFP: 54-135#/30" ISIP: 1231#/45" FFP: 139-210#/45" FSIP: 1221#/60"

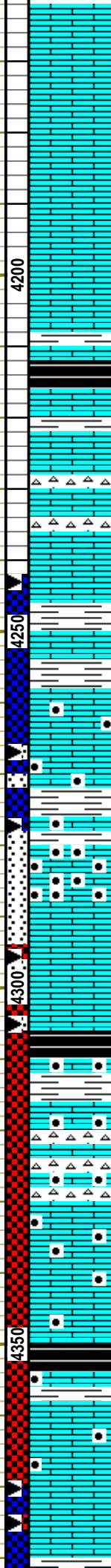
30MIN: shw of blk carb sh, lots of crm-gry ool cast lm, super por, lots of chps w/ free oil shws, strng odr. 60MIN: same as thirty min smple, lots of ool shw rock, lots free oil, decrse in blk sh, v. strng odr.

DST #4: 4296' - 4375' (LKC "K & L") Recovered 244' very lightly oil spotted mud, 305' very lightly oil spotted muddy water (30% mud, 70% water) and 488' water.
Total Fluid 1037'. Chlorides 24,000. IFP: 86-372#/30" ISIP: 1277#/45" FFP: 377-553#/30" FSIP: 1254#/45"

30MIN: mstly chlk-chlky lm, crm-tan xln lm, dense, no vis por, lots of wht chrt, 2 chps ool cas w/ strng live oil stn, no odr. 60MIN: same as thirty min sample, no sig change, sli incrs in chlk, fair odr.

PUMP PRESSURE 950+

30MIN: 90% try wht chlk-chlky lm, few ool cst chps w/ live oil stns, few brwn xln lm, pyrtzd, v. dense, flash odr. 60MIN: decrse in chlk, shw of blk & gry sh, one chp crm xln semi ool lm w/ stn, v. weak-no odr.



odr, ns.

4180: v. chlky sample, mstly tan ool cast lm, super por, no vis shw or stn, no odr.

4190: aa, sig incrs in wht chlk, v. lght gry fn xln lm, sli pyrtzd, no vis por, no odr, ns.

4200: lots of chlk, mstly lght gry-gry fn xln lm, no vis por, few tan ool cast lm, no odr, ns.

4210: aa, no sig change, no odr, ns.

4220: mstly chlk, lots of crm- v. lght gry crm inxln lm, poor por, no odr, ns.

4230: show of blk carb sh, lots of gry slit stn, hry-lght brwn xln lm, poor-no por, no odr, ns.

4240: lots of wht chlk, crm-tan inxln lm, sli foss, poor por, no odr, ns.

4250: aa, incrs in crm- wht chrt-chrty lm, sli foss, no vis por, few tan prtly ool cast por, no odr, ns.

4260: lots of wht chlk, shw of brwn fn xln lm, v. dense, no vis por, no odr, ns.

4270: v. chlky sample, gummy, lght gry-tan xln lm, one chp w/ stn, flash-weak odr.

4280: aa, lght crm inxln lm w/ fair fenstrl-xln por, goos shw of drk brwn oil, v. strng odr.

4290: incrs in aqua/gry sh, lots of tan-brwn dense xln lm, no vis por, good shw of crm xln lm, w/ fair xln por, shw of drk brwn oil, fair-strng odr.

4300: crm ool cast lm, v. strng shw of brwn oil, v. abundnt, super por, v.; strng odr.

4310: mstly gry, maroon and blk carb sh, lots ool cas shw rock, uphole, strng & odr.

4320: aa, slght decrse ool cast lm shw rock, incrs in chlky lm, crm fn xln lm, no odr, ns.

4330: chlky sample, lots of cr ool cast lm w/ shw of free oil, brwn xln lm, dense, no vis por, ns, fair-strng odr.

4340: lots of chlk-chlky lm, sig shw of wht chrt-chrty lm, no vis por, shw of crm ool cast and xln lm, fair xln por, shw of brwn oil, fair odr.

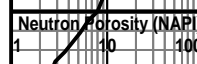
4350: shw of blk carb sh, lots of wht-tan chrt, lots of chlk-chlky lm, few ool cst chps w. stn, v. weak odr.

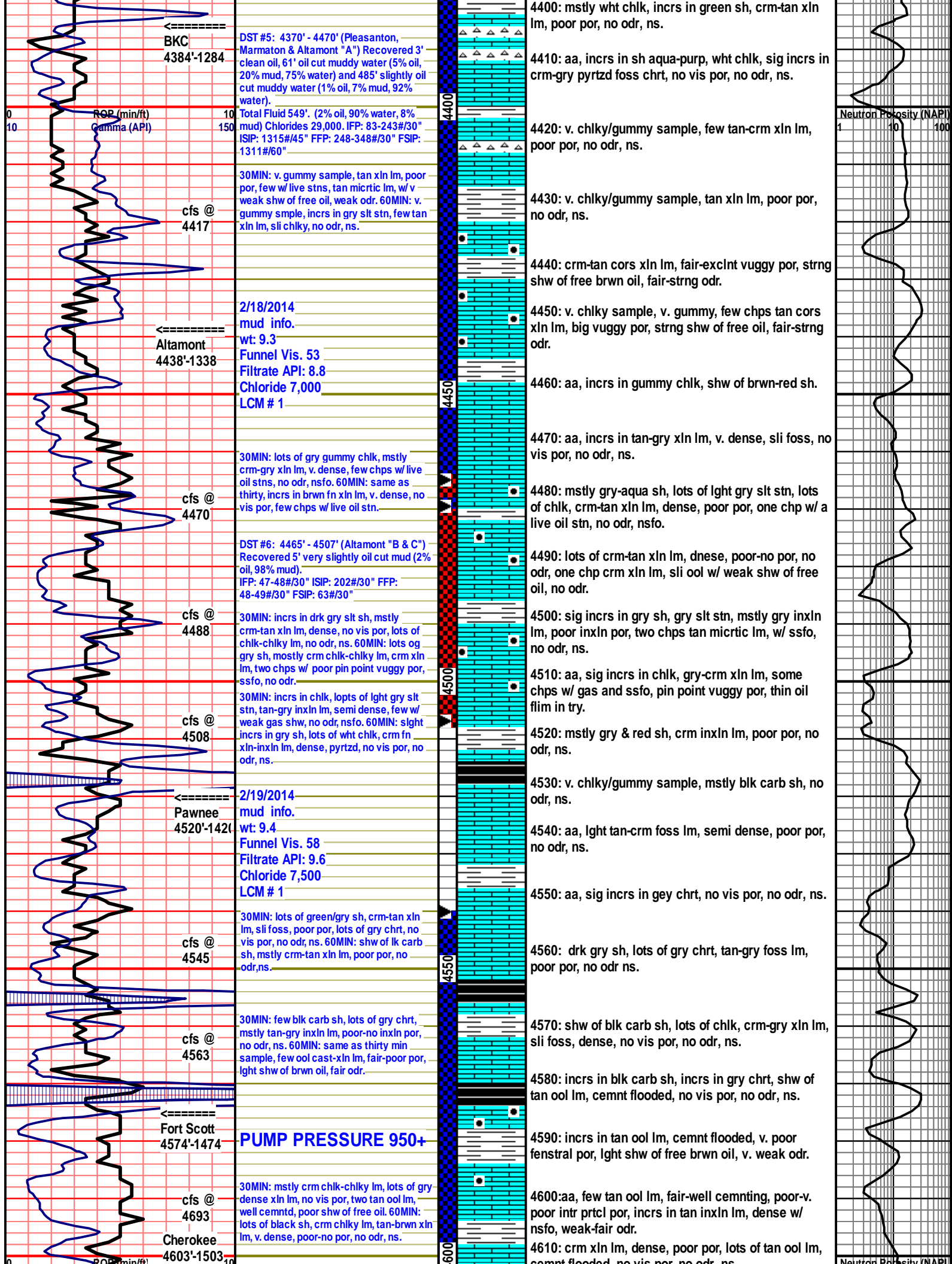
4360: lots of blk carb sh, wht sli foss chrt, chlk-chlky lm, shw of tan-gry inxln lm, semi dense, poor-n por, no odr, ns.

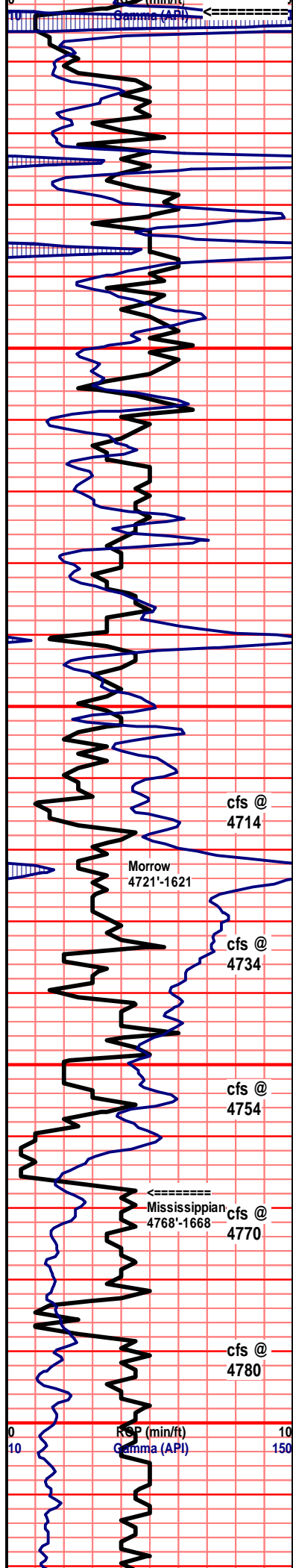
4370: crm-tan xln lm, sli ool, fair-poor por, shw of brwn oil, fair odr.

4380: NO SAMPLE CAUGHT

4390: lots of gry & maroon sh, chlk-chlky lm, few tan micrtic lm, w/ sat oil stn, incrs crm xln lm, w/ fair pin point vuggy por, shw of brwn oil.







DST #7: 4540' - 4714' (Myrick, Fort Scott, Cherokee & Johnson)
 Recovered 75' very slightly oil cut mud (2% oil, 98% mud). IFP: 119-141#/30" ISIP: 1159#/30" FFP: 136-155#/30" FSIP: 917#/30"

2/20/2014 mud info.
 wt: 9.5
 Funnel Vis: 58
 Filtrate API: 9.6
 Chloride 8,200
 LCM # 1/2

PUMP PRESSURE 950+

DST #8: 4698' - 4780' (Morrow)
 Recovered 12' mud.
 IFP: 70-78#/30" ISIP: 919#/45" FFP: 80-88#/45" FSIP: 928#/60"

cfs @ 4714

Morrow 4721'-1621

cfs @ 4734

cfs @ 4754

Mississippian 4768'-1668

cfs @ 4770

cfs @ 4780

30MIN: mstly chlk-chlky lm, lots of crm-gry xln lm, few w/ live oil stns, flash odr. 60MIN: slight incrs in blk carb sh, lots of gry chrt-chrty lm, tan-crm xln lm, poor pin point vuggy por, weak shw of oil, v. weak odr.

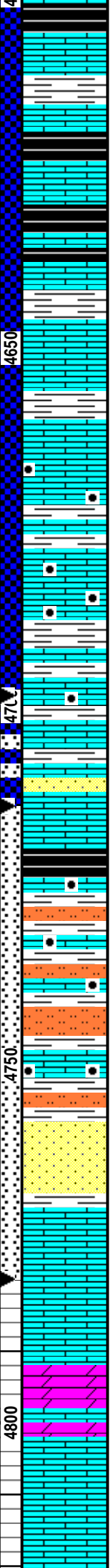
30MIN: mstly aqua, red, and red sh, lots of chlky lm, crm xln lm, semi dense poor por, few tan ool lm, cemnt flooded w/ poor fenstral por, weak show of free oil, no odr. 60MIN: same as thirty min sample, incrs in clr-gry slt stn, shw of gry foss chrt, no odr, ns.

30MIN: v. gummy sample, lots of gry & aqua sh, few qtz ss clusters, v. fn grn, well sortd, rounded-well rounded, few xln-ool lm, some w/ weak show of free oil, no odr. 60MIN: decrse in lm, no ss, incrs in green sh, no odr, ns.

30MIN: few crm-tan xln lm, some w/ stns, mstly wht qtz ss, v. fn grn, rounded-subangular, fair-well cemntd, lots of wht clay matrix, no odr, ns. 60MIN: ss same as thirty min sample, incrs in tan-brwn chrt lm, no vis por, no odr, ns.

30 MIN: mstly gry sh, wht qtz ss, v. fn grn, rounded-subangular, fair-well cemntd, lots of wht clay matrix, few gry med grn clusters, well cemntd, shw of tan xln lm, slt foss, poor-no por, no odr, ns. 60MIN: same as thirty min sample, incrs in tan fn xln, no vis por, no odr, ns.

2/21/2014



4620: incrs in blk sh, mstly gry xln lm, v. dense, no vis por, no odr, ns.

4630: aa, msly tan-gry dense lm, no vis por, no odr, ns.

4640: slight incrs blk carb sh, sig incrs in gummy chlk, no odr, ns.

4650: aa, incrs in gummy chlk, tan inxln lm, poor-no por, no odr, ns.

4660: brwn inxln lm, v. dense, cemnt flooded por, pyrtzd, poor-no por, no odr, ns.

4670: tan-brwn xln lm, dense, w/ poor pin point vuggy por, slight shw brwn oil, no odr.

4680: slight incrs in gry sh, crm-brwn xln lm, poor pin point vuggy por, live oil stn, no odr.

4690: aa, no sig change, no odr oil stn aa.

4700: incrs in crm chlk-chlky lm, incrs in crm-gry chrty lm, few crm xln lm, w/ poor pin point vuggy por, weak shw of oil, no odr.

4710: aa, no sig change in litho or por, weak-fair odr.

4720: mstly gry-red sh, few ool cast lm, w/ live oil stn, no odr, nsfo.

4730: mstly aqua, gry and red sh, few tan ool lm, cemnt flooded, weak shw of free oil, two clusters of qtz ss, sub-rounded-sub angular, fn grn, poorly sortd, well cemntd, shly, no odr, ns.

4740: lots of gry, aqua & red sh, mstly crm-tan xln lm, poor pin pont vuggy por, few w/ weak live oil stns-shws, no odr, ns.

4750: v. gummy sample, mstly sh aa, lm aa slight incrs in shw rock, v. weak odr.

4760: lots of gry-aqua sh, slight incrs in chlky lm, tan-crm xln lm, dense, few w/ ssfo, poor por, no odr.

4770: aa, sig incrs in aqua & gry sh, shw of wht-crm chrt, decrse in tan xln lm, few w/ oil stns.

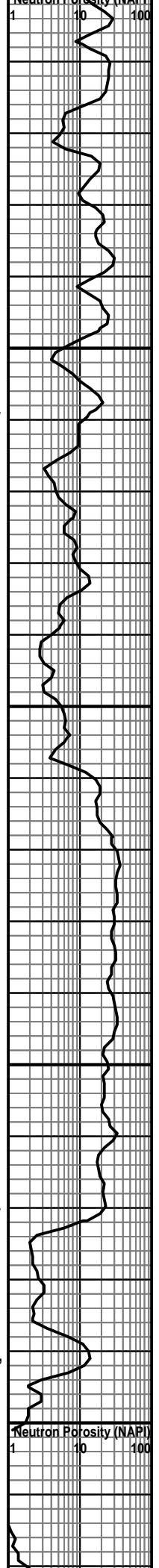
4780: lots of gry sh, wht qtz ss, v. fn grn, rounded-subangular, fair-well cemntd, lots of wht clay matrix, no odr, ns.

4790: mstly drk gry sh, ss aa, crm-tan xln lm, no odr, ns.

4800: mstly gry sh & slt stn, slight incrs in crm xln lm, cemnt flooded por, no odr, ns.

4810: aa, sig incrs in wht carbnte mud, lots of wht syrcsc dolo, cors grn, super intr prtcl por, no odr, ns.

4820: lots of wht carb mud, mostly wht dolo-dandy lm, poor por, well cemntd, no odr, ns.



mud info.
wt: 9.5
Funnel Vis. 66
Filtrate API: 12.0
Chloride 5,000
LCM # 1

4830: aa, slight incrs in gry sh, msly drty crm xln lm, v. dense, no vis por, no odr, ns.
4840: aa, lots of crm xln lm, poor por, no odr, ns.
4850: mstly crm inxln lm, fair-poor por, no odr, ns.
4860: aa, slight incrs in wht-crm sandy lm, well cemntd, poor-no por, no odr, ns.
4870: slight incrs in carb mud chps, mstly wht sandy lm, cors grn, well cemntd, no odr, ns.
4880: aa, shw of tan-brwn inxln lm, dense, no vis por, no odr, ns.
4890: incrs in carbnte mud chps, wht-drt crm xln lm, poor-no por, no odr, ns.
4900: sig incrs in drk gry-aqua sh, crm fn xln, cemnt flooded fracs, no odr, ns.
4910: mstly aqua brwn and gry sh, lm aa, no odr, ns.
4920: aa, brwn foss lm, cemnt flooded, no vis por, no odr, ns.

RTD 4920'-1820 cfs @ 4920

30MIN: mstly green, gry & brwn sh, crm fn xln lm, no vis por, few brwn foss lm, no vis por, no odr, ns.

4850
4900
4950
00

