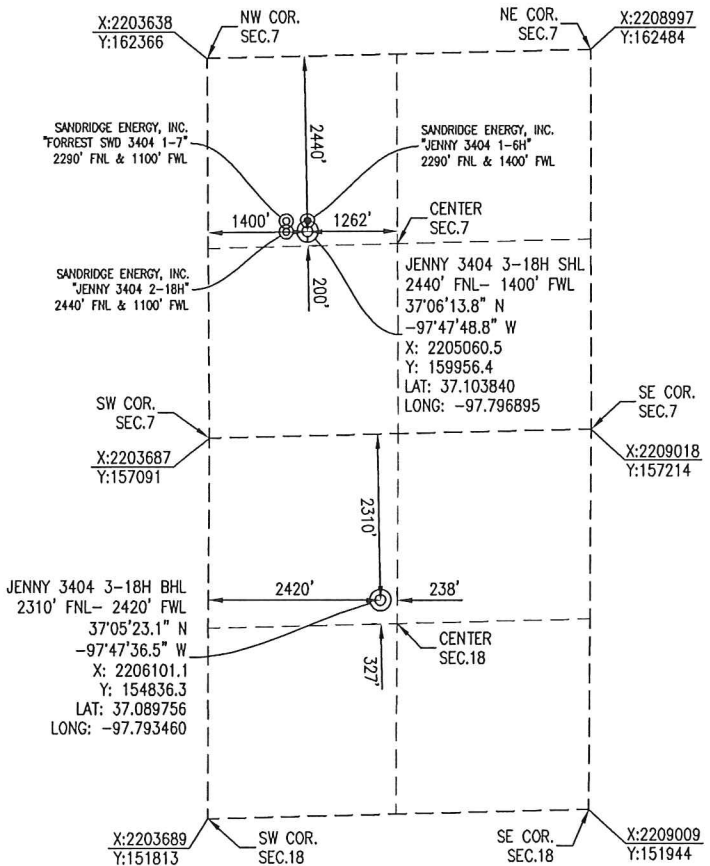


SUMNER COUNTY, KANSAS
 2440' FNL- 1400' FWL SECTION 7 TOWNSHIP 34S RANGE 04W 6TH P.M.



BOTTOM HOLE INFORMATION PROVIDED BY OPERATOR LISTED AND CORNER COORDINATES ARE TAKEN FROM POINTS SURVEYED IN THE FIELD.



ELEVATION:
 1249' GR. AT STAKE

OPERATOR: SANDRIDGE ENERGY, INC. **WELL NO:** 3-18H

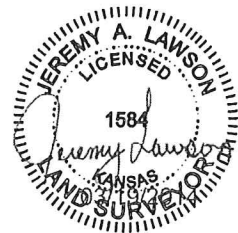
LEASE NAME: JENNY 3404

TOPOGRAPHIC & VEGETATION: LOCATION FELL IN A FIELD

GOOD DRILL SITE: YES **REFERENCE STAKES OR ALTERNATE LOCATION STAKES SET:** NONE

BEST ACCESSIBILITY TO LOCATION: WEST LINE

DISTANCE & DIRECTION FROM HWY JCT OR TOWN: FROM THE JCT. OF KS-44 & NE 130 AVE (±12.5 MILES EAST OF ANTHONY, KS) TRAVEL SOUTH ON NE 130 AVE FOR ±2.0 MILES, CONTINUE SOUTH ON S CREEK RD AND TRAVEL ±1.5 MILES TO THE WEST 1/4 CORNER OF SECTION 7, T34S-R04W.



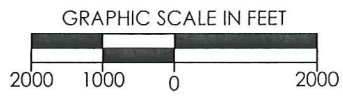
(THE FOLLOWING INFORMATION WAS GATHERED USING A GPS RECEIVER ACCURACY ±2-3 METERS)

GPS DATUM: NAD-27	STATE PLANE COORDINATES:
LAT: 37.103840	ZONE: KS-SOUTH NAD-27
LONG: -97.796895	X: 2205060.5
	Y: 159956.4

DATE STAKED: 3-19-2014

GENERAL NOTES:

THE TIES AND FOOTAGES SHOWN ON THIS PLAT ARE FROM LINES OF OCCUPATION FROM A SURVEY MADE ON THE GROUND AND / OR BEARING AND DISTANCES FROM THE GENERAL LAND OFFICE PLAT OF THE AREA SHOWN AND MAY NOT BE THE ACTUAL PROPERTY CORNERS. THIS PLAT DOES NOT REPRESENT A TRUE BOUNDARY SURVEY. DRILL SITE CONDITION DETERMINATIONS WERE MADE BY SANDRIDGE ENERGY INC. REPRESENTATIVES.



REVISION	SandRidge
	"JENNY 3404 3-18H" PART OF THE NW 1/4 OF SECTION 7, T-34-S, R-04-W PROPOSED DRILL SITE SUMNER COUNTY, KANSAS
	SCALE: 1" = 2000' PLOT DATE: 03-19-2014
	DRAWN BY: MF SHEET NO.: 1 OF 4

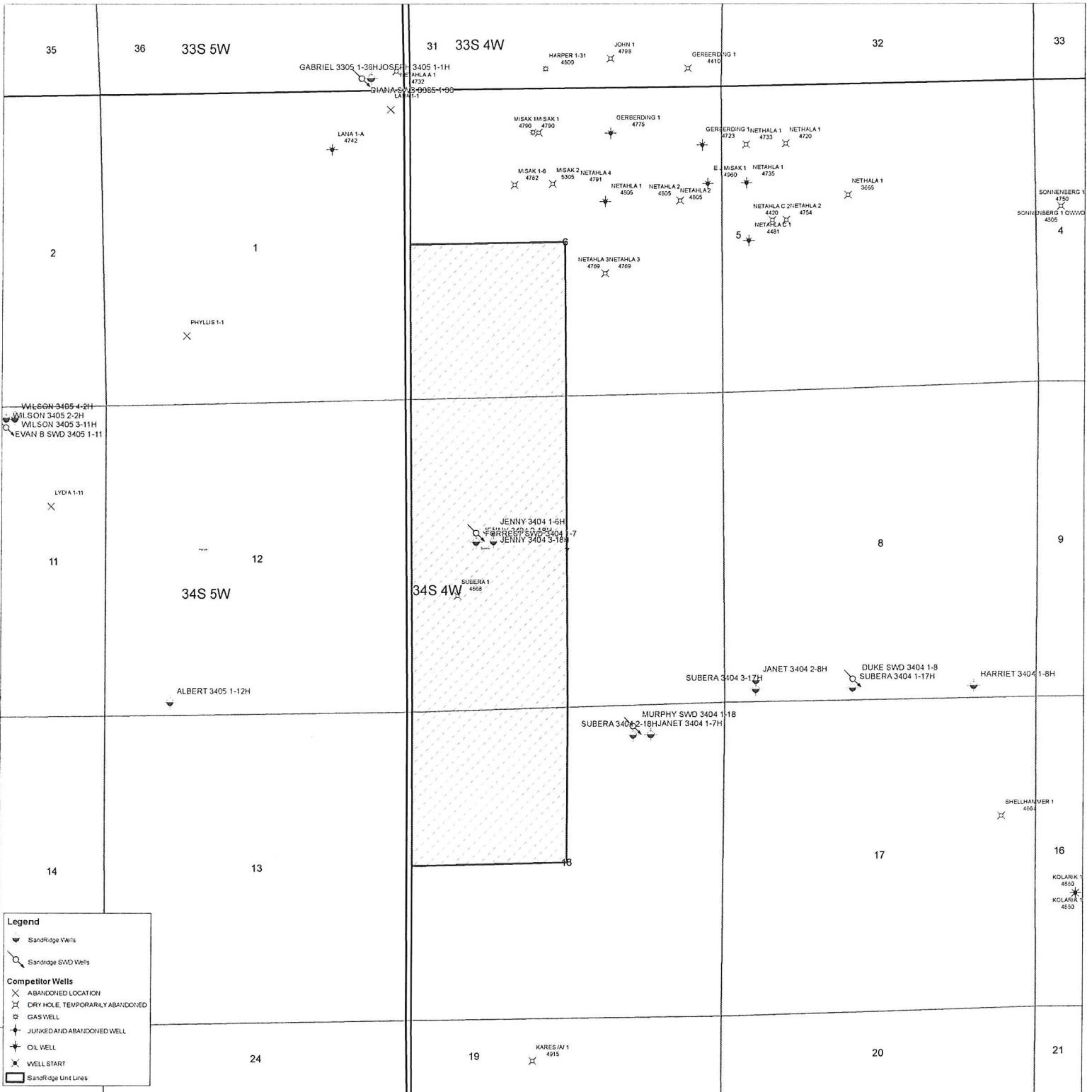
Jenny 3404 3-18H
Lease Information Sheet

Unit Description:

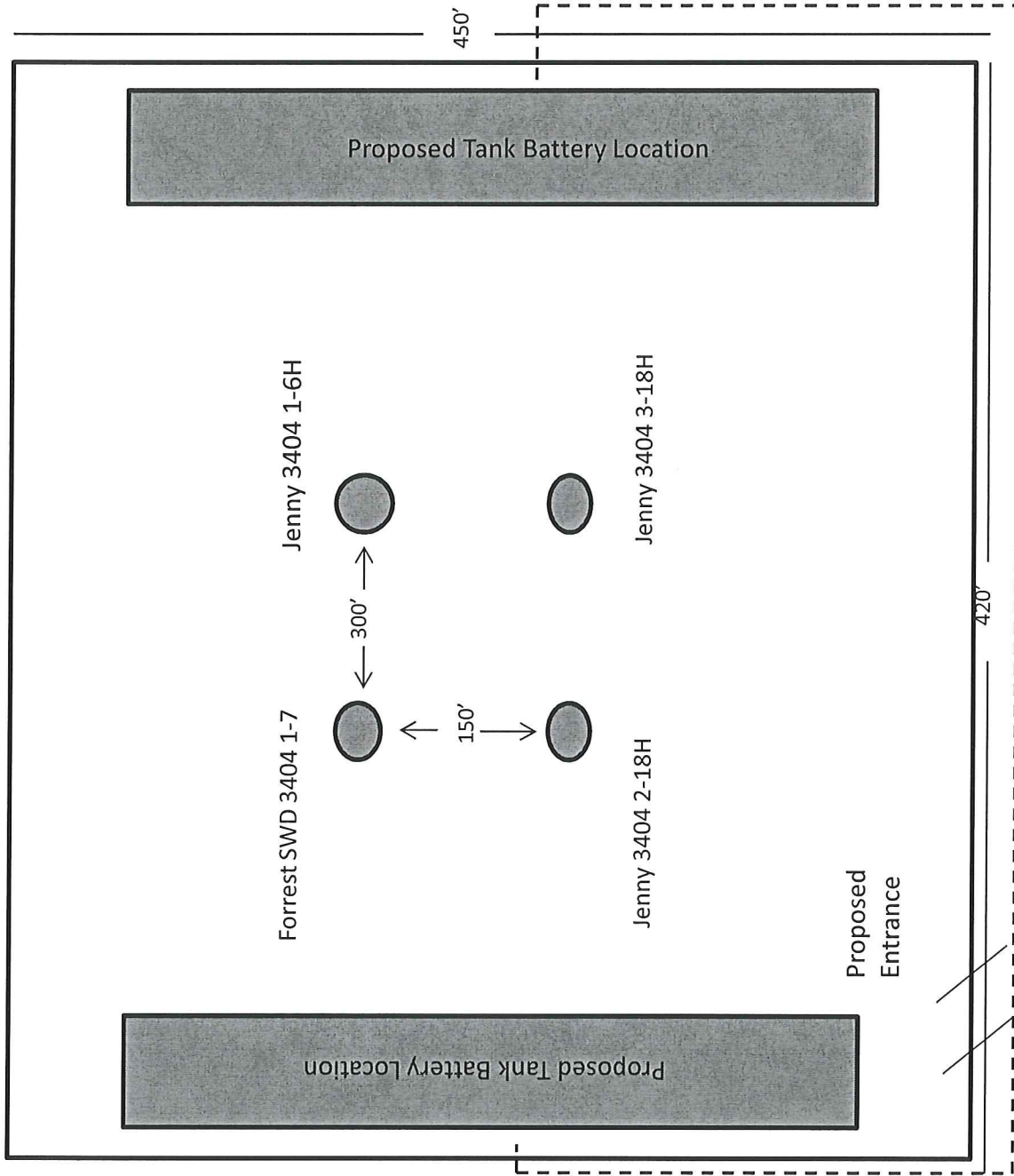
SW/4 of Section 6-T34S-R4W and
W2 of Section 7-T34S-R4W and
NW/4 of Section 18-T34S-R4W
Sumner County

Surface Owner:

SandRidge Energy
123 Robert S Kerr Avenue
Oklahoma City, OK 73102



Jenny 3404 3-18H



Proposed Electric Line