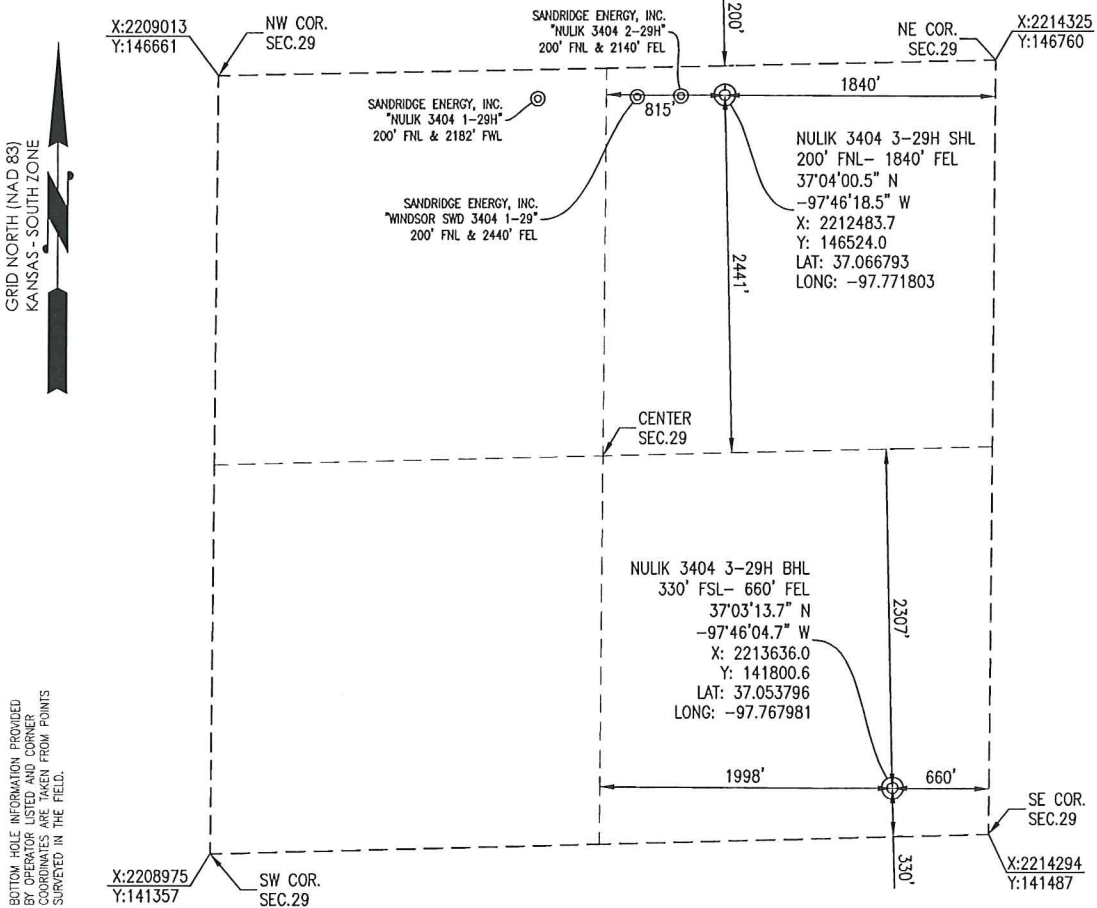




SUMNER COUNTY, KANSAS
 200' FNL- 1840' FEL SECTION 29 TOWNSHIP 34S RANGE 04W 6TH P.M.



OPERATOR: SANDRIDGE ENERGY, INC.

WELL NO: 3-29H

ELEVATION:
 1224' GR. AT STAKE

LEASE NAME: NULIK 3404

TOPOGRAPHIC & VEGETATION: LOCATION FELL IN A FIELD

GOOD DRILL SITE: YES

REFERENCE STAKES OR ALTERNATE LOCATION
 STAKES SET: NONE

BEST ACCESSIBILITY TO LOCATION: NORTH LINE

DISTANCE & DIRECTION

FROM HWY JCT OR TOWN: FROM THE JCT. OF KS-44 & S ARGONIA RD, TRAVEL SOUTH ON
 S ARGONIA RD FOR ±6.0 MILES, TURN RIGHT (WEST) ON W 150TH ST S AND TRAVEL ±0.5
 MILES TO THE NORTH 1/4 CORNER OF SECTION 29, T34S-R04W.

(THE FOLLOWING
 INFORMATION WAS
 GATHERED USING A GPS
 RECEIVER ACCURACY ±2-3
 METERS)

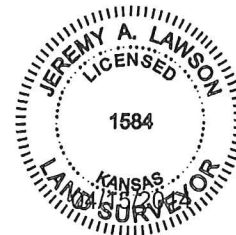
GPS
 DATUM: NAD-27
 LAT: 37.066793
 LONG: -97.771803

STATE PLANE
 COORDINATES:
 ZONE: KS-SOUTH NAD-27
 X: 2212483.7
 Y: 146524.0

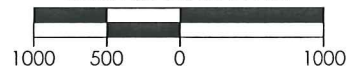
DATE STAKED: 4-15-2014

GENERAL NOTES:

THE TIES AND FOOTAGES SHOWN ON THIS PLAT ARE FROM LINES OF OCCUPATION FROM A SURVEY MADE ON THE GROUND AND / OR BEARING AND DISTANCES FROM THE GENERAL LAND OFFICE PLAT OF THE AREA SHOWN AND MAY NOT BE THE ACTUAL PROPERTY CORNERS. THIS PLAT DOES NOT REPRESENT A TRUE BOUNDARY SURVEY. DRILL SITE CONDITION DETERMINATIONS WERE MADE BY SANDRIDGE ENERGY INC. REPRESENTATIVES.



GRAPHIC SCALE IN FEET



REVISION		SandRidge	
△	MOVED SHL (4-15-2014)	"NULIK 3404 3-29H" PART OF THE NE 1/4 OF SECTION 29, T-34-S, R-04-W PROPOSED DRILL SITE SUMNER COUNTY, KANSAS	
		SCALE: 1" = 1000'	
		PLOT DATE: 04-15-2014	DRAWN BY: MF SHEET NO.: 1 OF 4

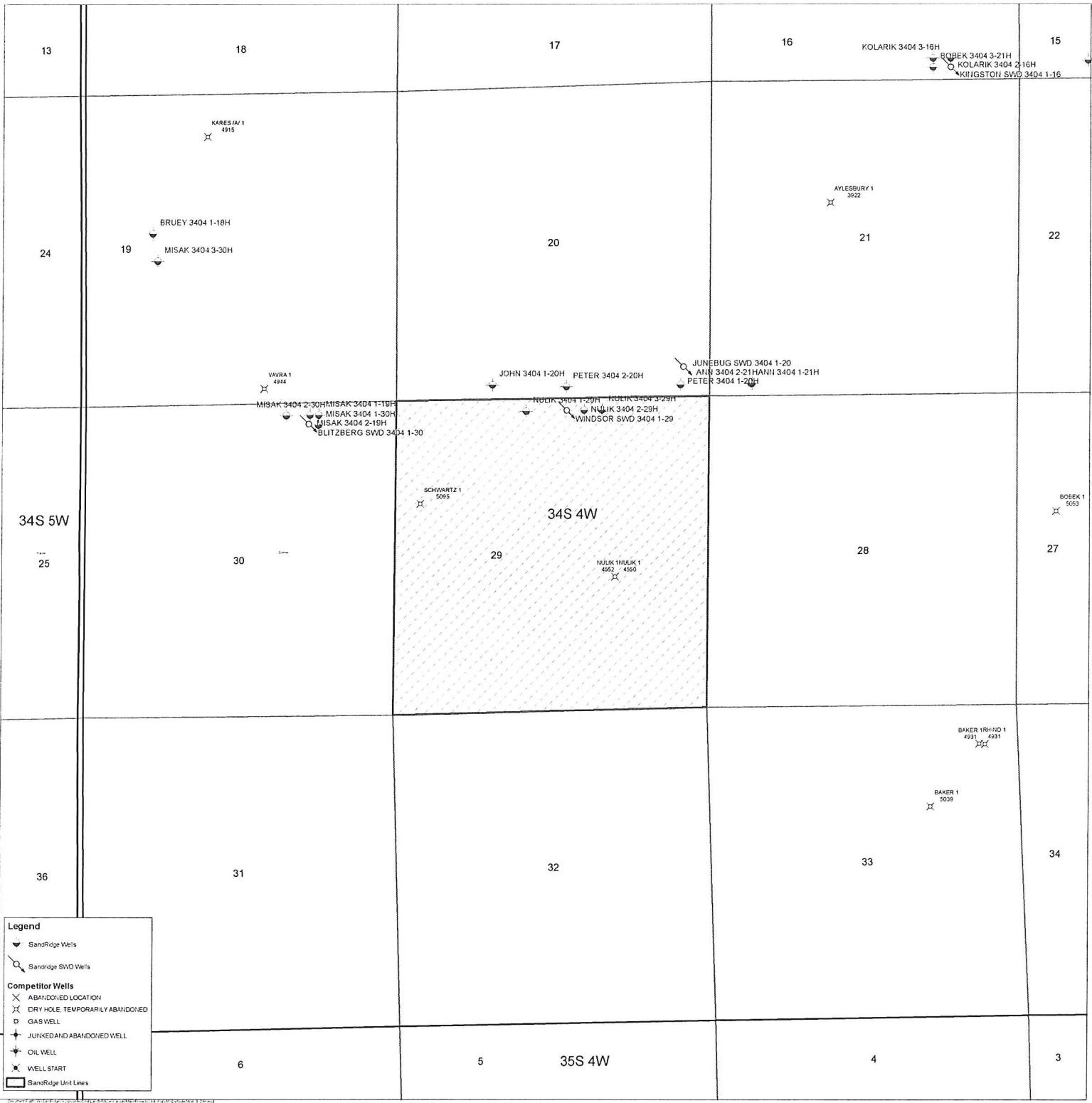
Nulik 3404 3-29H
Lease Information Sheet

Unit Description:

All of Section 29-34S-04W
Sumner County

Surface Owner:

SandRidge Energy
123 Robert S Kerr Avenue
Oklahoma City, OK 73102



© 2014 SandRidge Energy, L.P. All rights reserved. SandRidge Energy, L.P. is a subsidiary of SandRidge Energy, Inc.

Nulik 3404 2-29H, Nulik 3404 3-29H, Windsor SWD 3404

