



Dual Induction Log

DIGITAL LOG (785) 625-3858

API No. 15-015-23-892-00-00	Company	Vess Oil Corporation		
	Well	Bloir "A" No. 33		
	Field	El Dorado		
	County	Butler	State	Kansas
	Location	SW NE NE NW 400' FNL & 2.140' FWL		Other Services CNL/CDL MEL
	Sec: 13	Twp: 26S	Rge: 4E	Elevation
Permanent Datum	Ground Level	Elevation 1373		K.B. 1379
Log Measured From	kelly Bushing	6 Ft. Above Perm. Datum		D.F.
Drilling Measured From	kelly Bushing			G.L. 1373

Date	5/5/2011	
Run Number	One	
Depth Driller	2481	
Depth Logger	2479	
Bottom Logged Interval	2478	
Top Log Interval	00	
Casing Driller	8.625 @ 256	
Casing Logger	262	
Bit Size	7.875	
Type Fluid in Hole	Chemical	
Salinity, ppm CL	1000	
Density / Viscosity	9.3	38
pH / Fluid Loss	9.0	9.8
Source of Sample	Flowline	
Rm @ Meas. Temp	1.75 @ 60	
Rmf @ Meas. Temp	1.31 @ 60	
Rmc @ Meas. Temp	2.36 @ 60	
Source of Rmf / Rmc	Charts	
Rm @ BHT	1.04 @ 101	
Operating Rig Time	4 Hours	
Max Rec. Temp. F	101	
Equipment Number	10	
Location	Hays	
Recorded By	L Long	

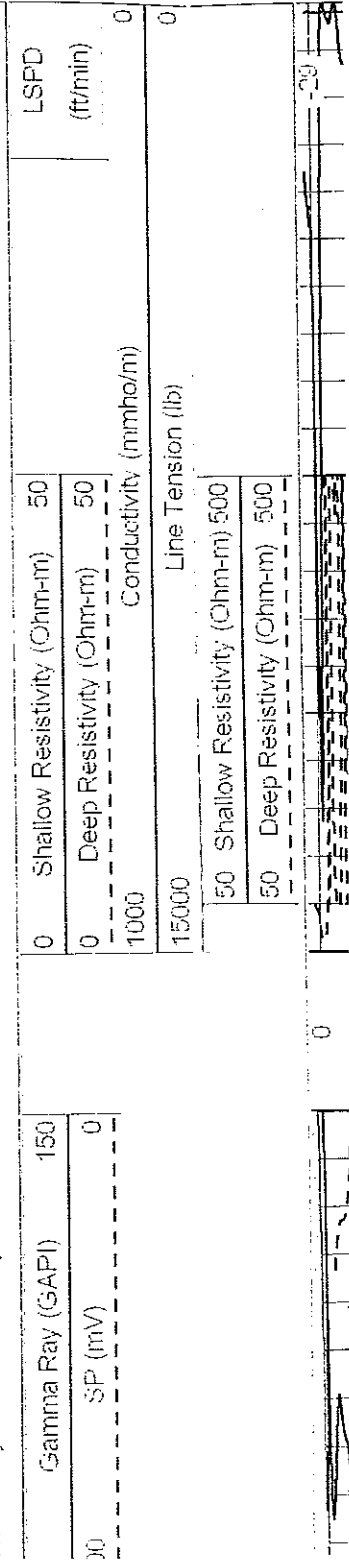
All interpretations are opinions based on inferences from electrical or other measurements and we cannot and do not guarantee the accuracy or correctness of any interpretation, and we shall not, except in the case of gross or willful negligence on our part, be liable or responsible for any loss, its, damages, or expenses incurred or sustained by anyone resulting from any interpretation made by any of our officers, agents or employees. These interpretations are also subject to our general terms and conditions set out in our current Price Schedule.

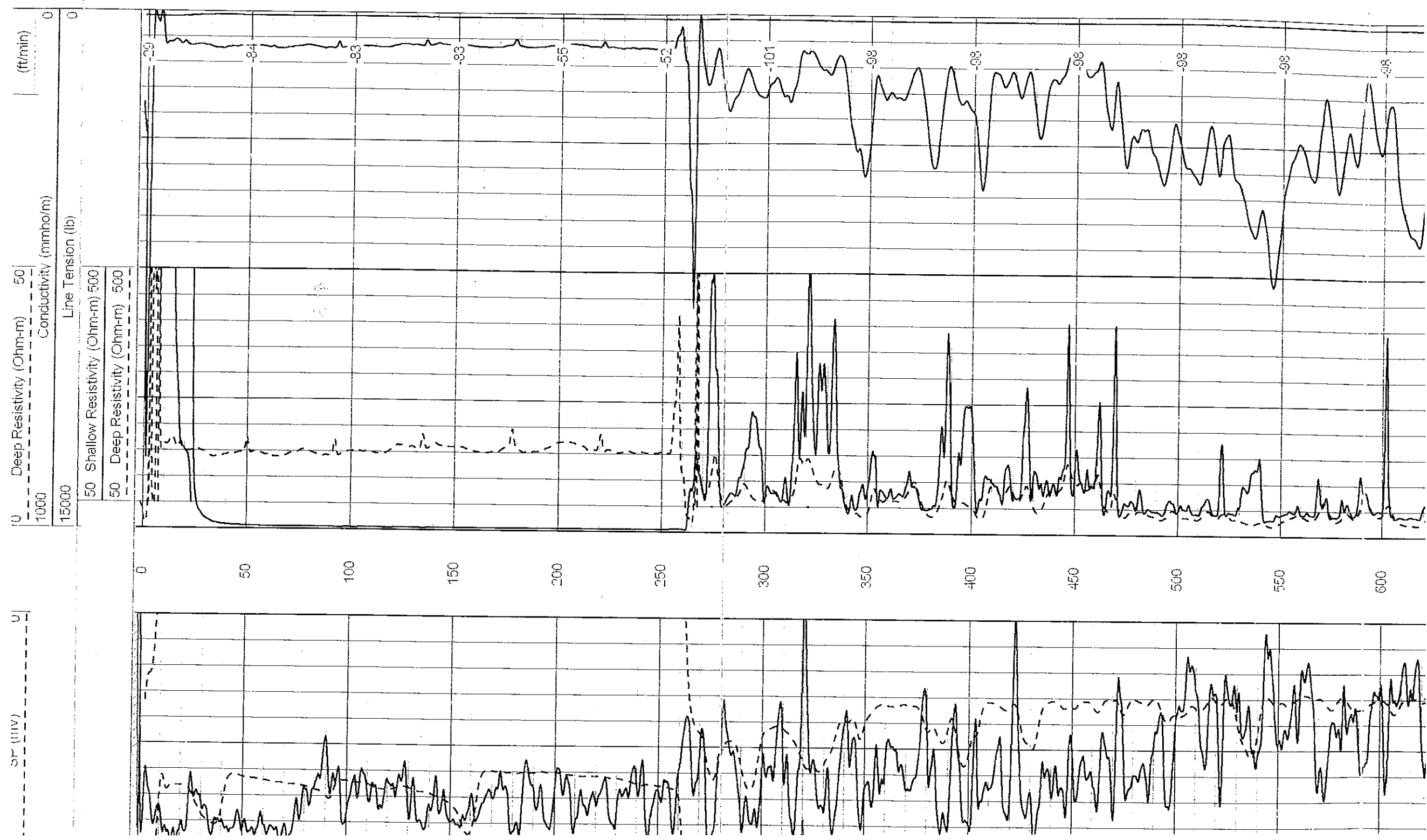
Comments

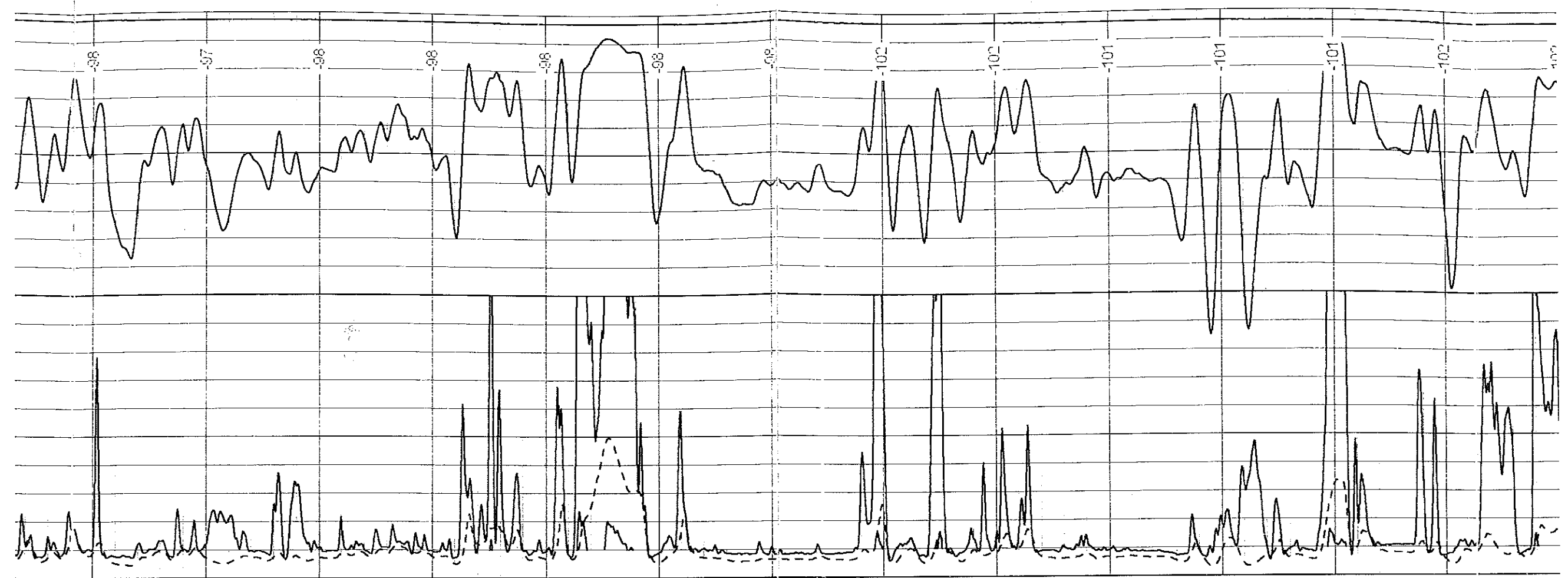
Thank you for using Log-Tech, Inc.
(785) 625-3858

Towanda, East on 254 Highway to Shumway Road, 1 South to SW 20th, 1/2 East, South Into

Database File: vess_bloir_a_33.db
 Dataset Pathname: dll/pass3.1
 Presentation Format: dll2in
 Dataset Creation: Thu May 05 09:37:19 2011 by Calc Open-Cased 090629
 Charted by: Depth in Feet scaled 1:600

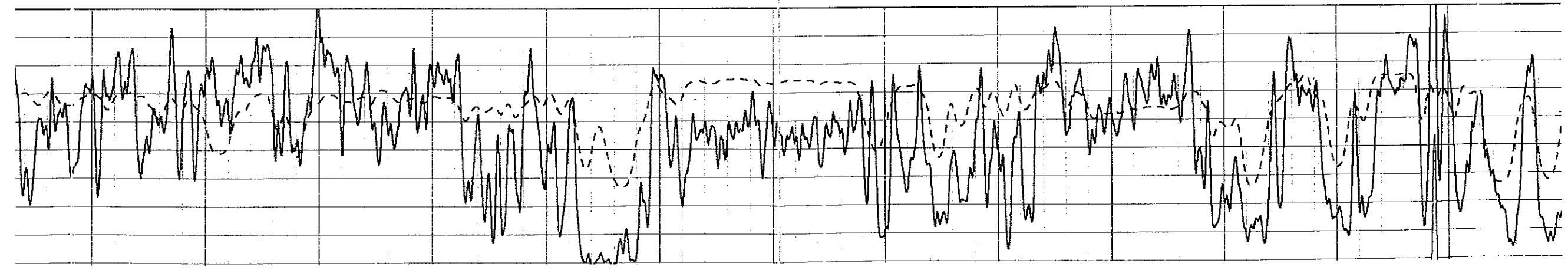


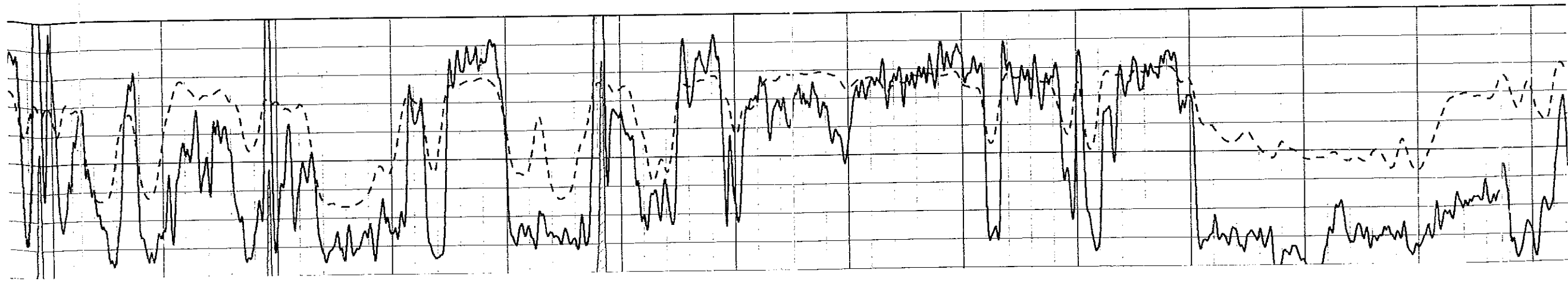
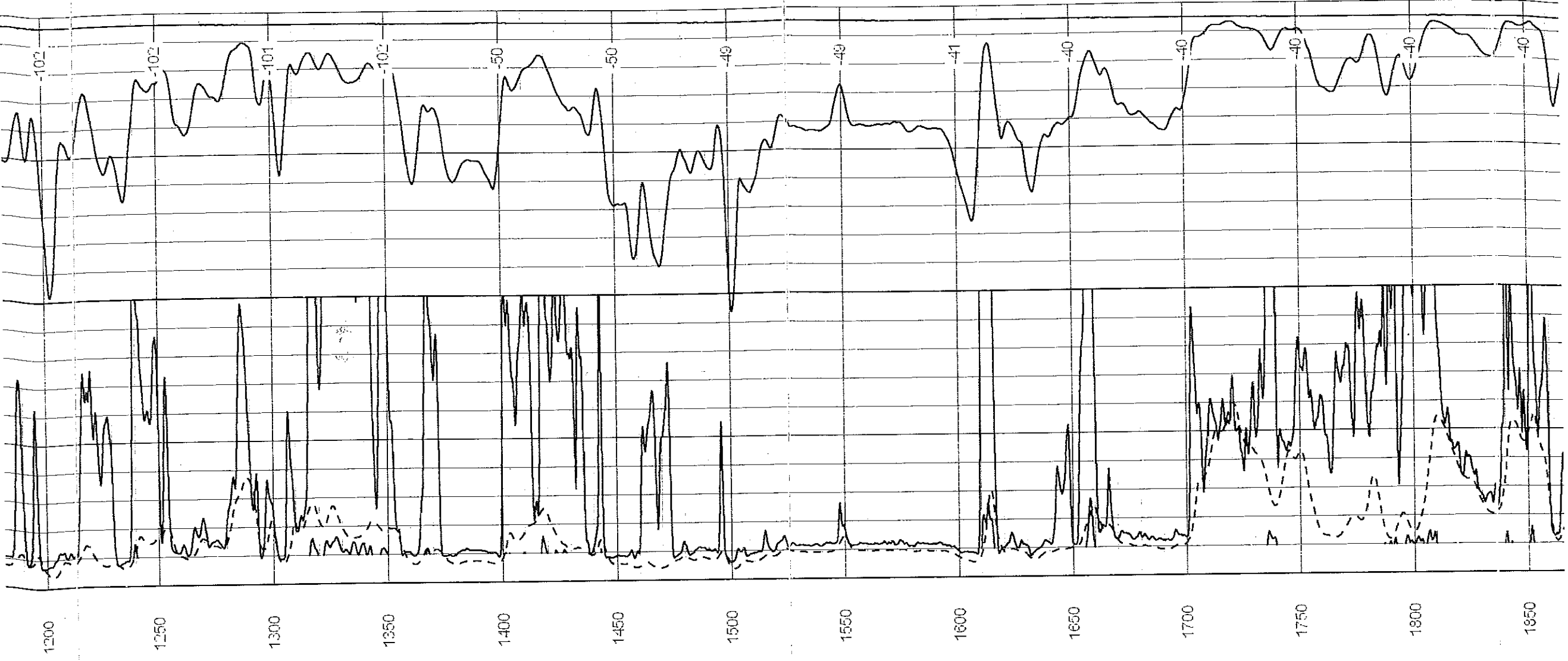


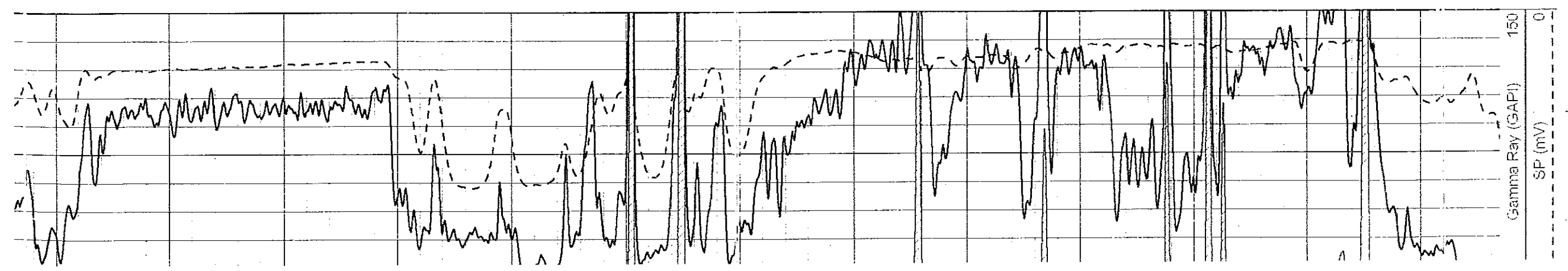
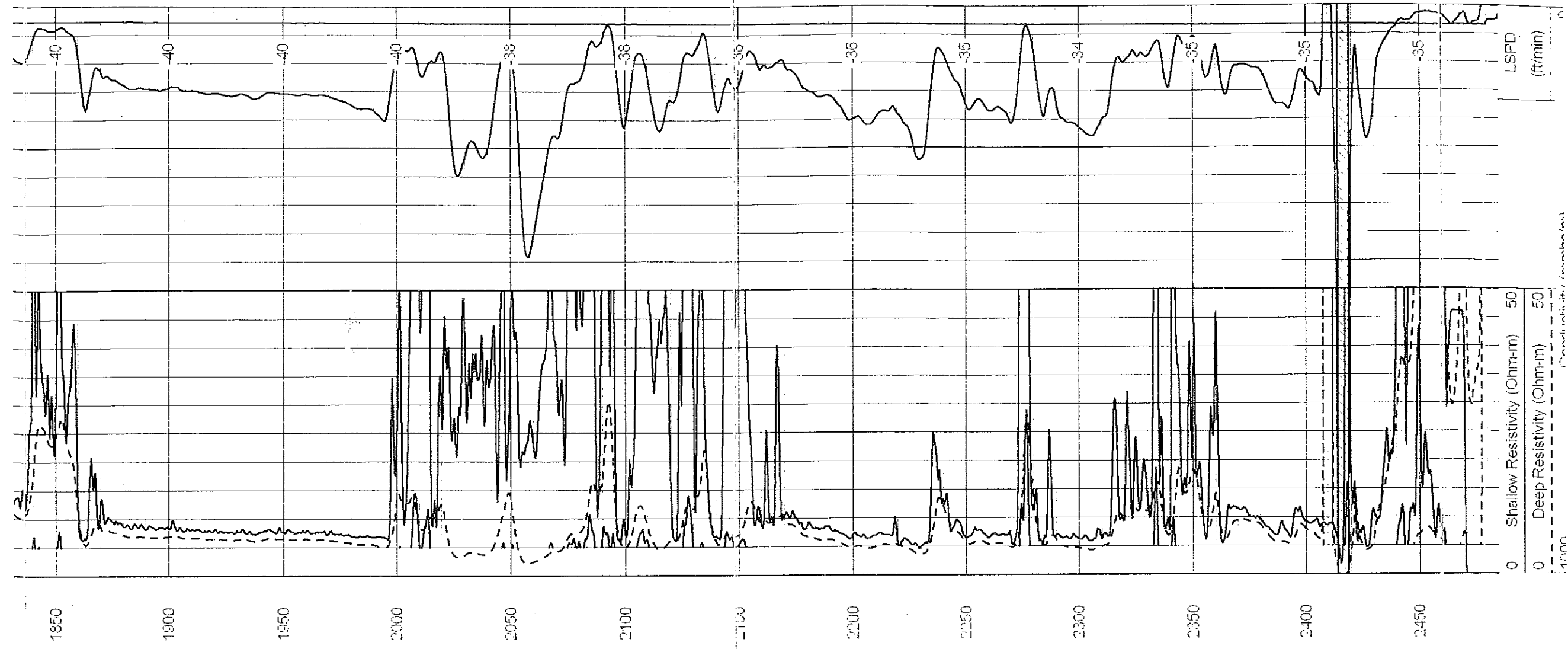


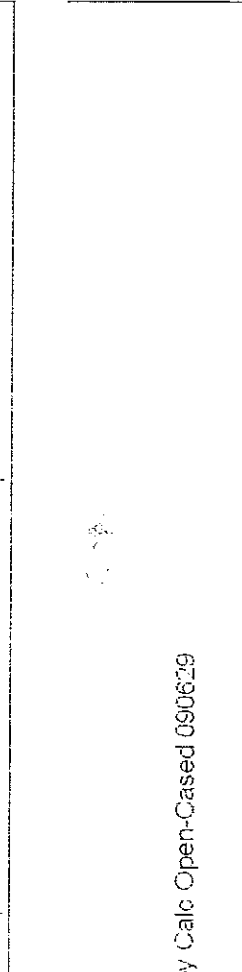
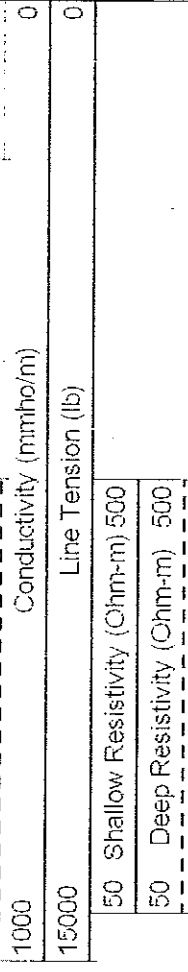
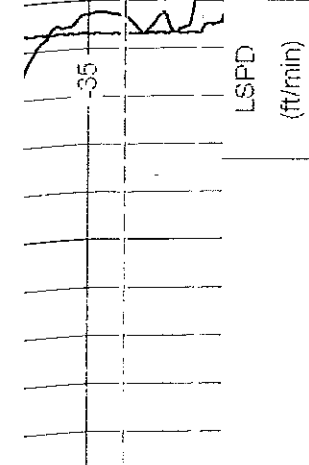
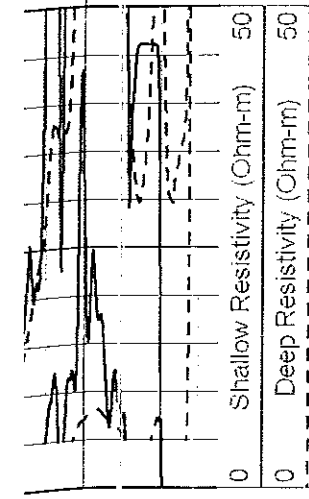
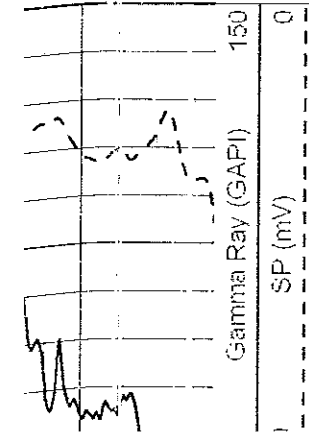
-96 -97 -98 -98 -98 -98 -98 -98 -102 -102 -101 -101 -101 -101 -102 -102

600 650 700 750 800 850 900 950 1000 1050 1100 1150 1200 1250

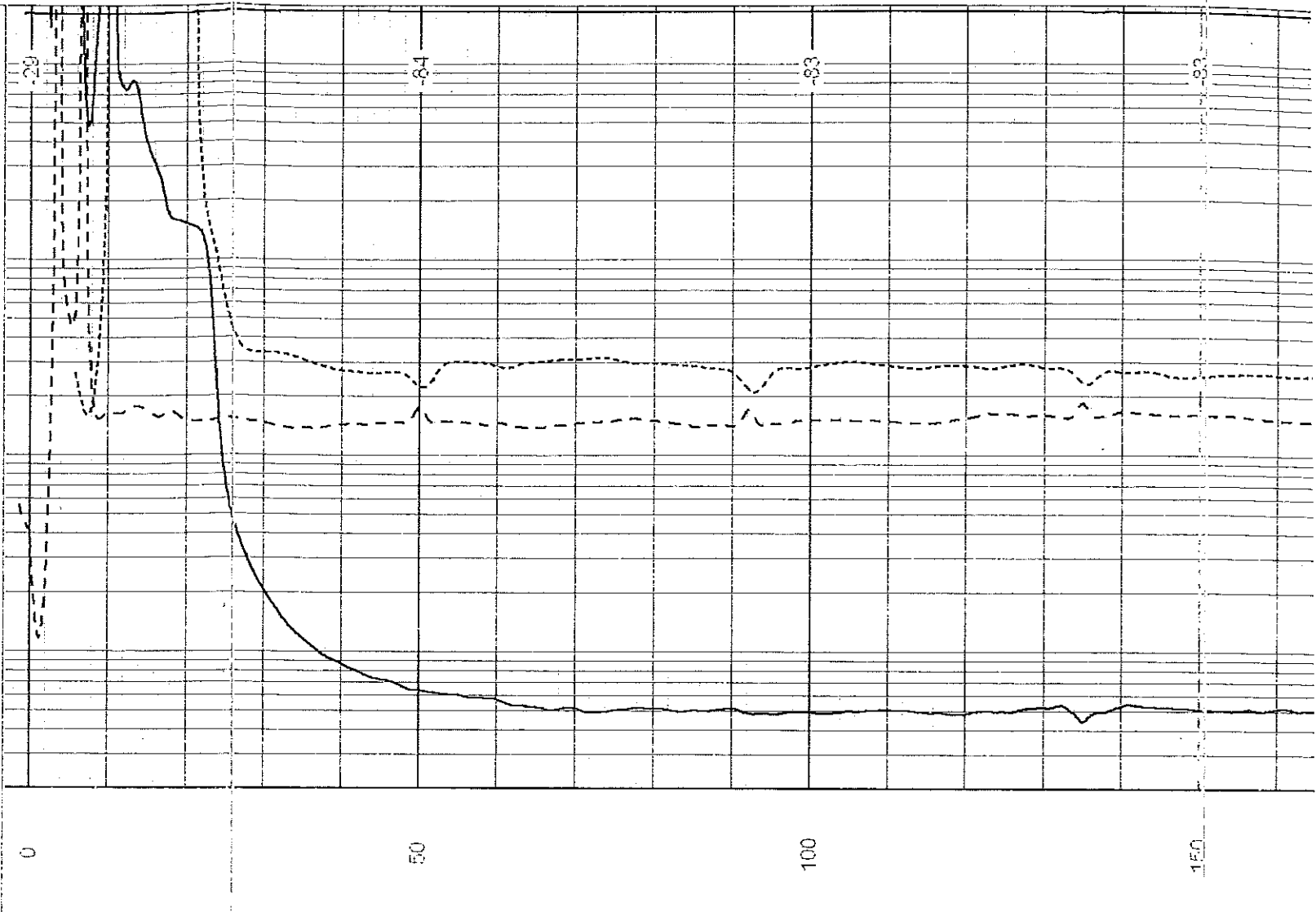
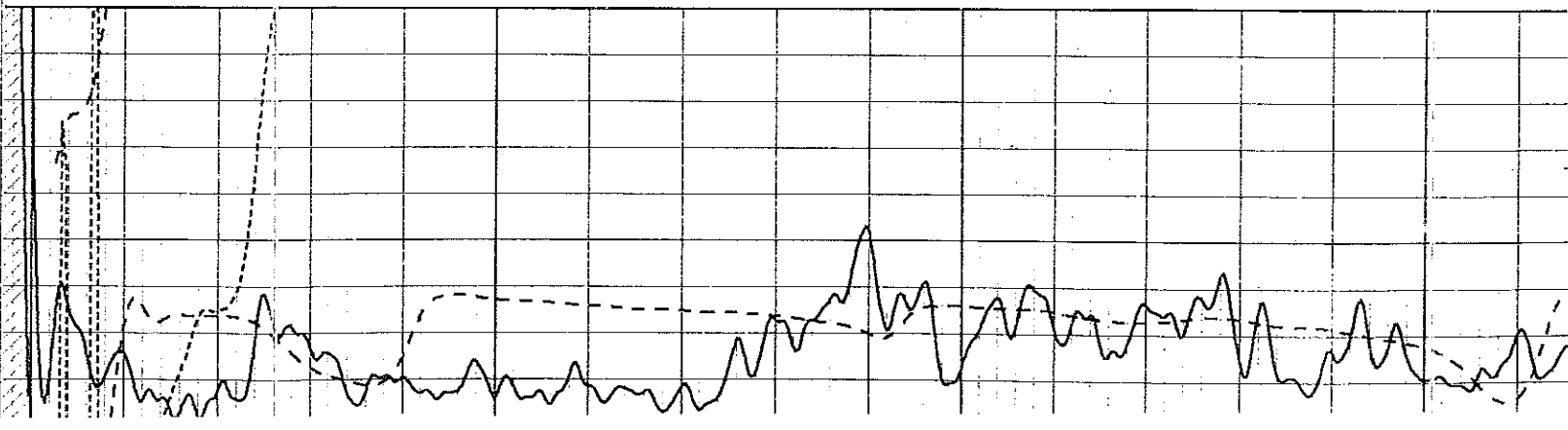
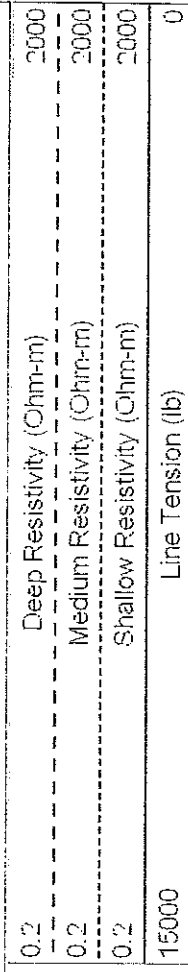
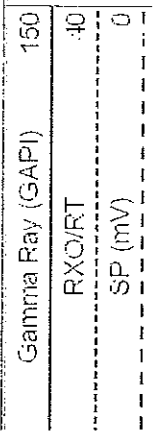


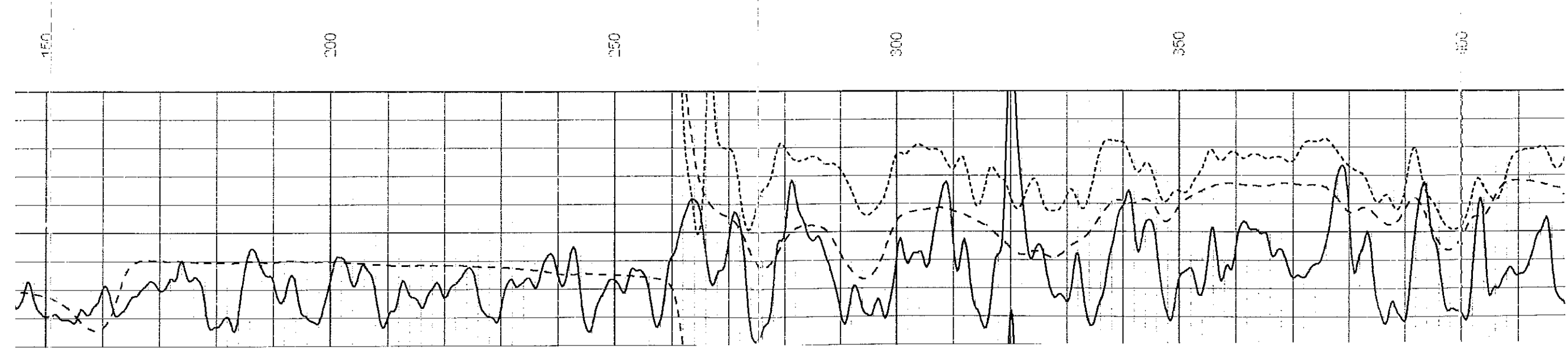
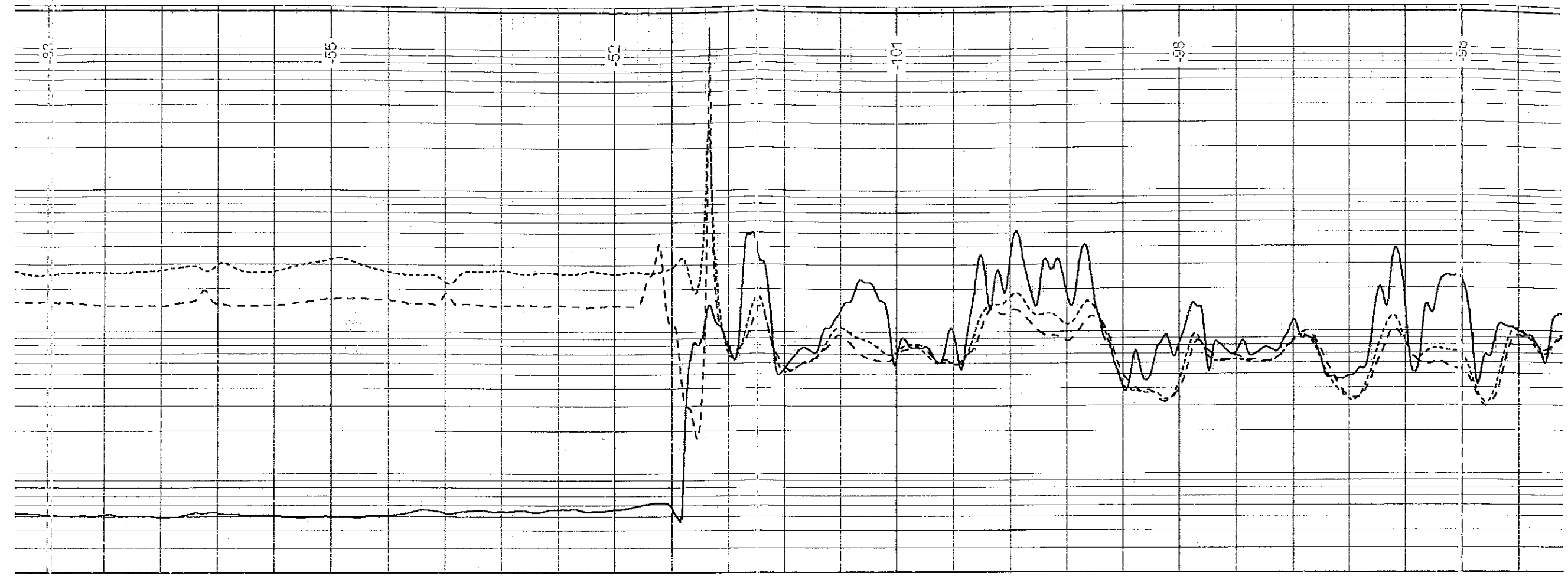


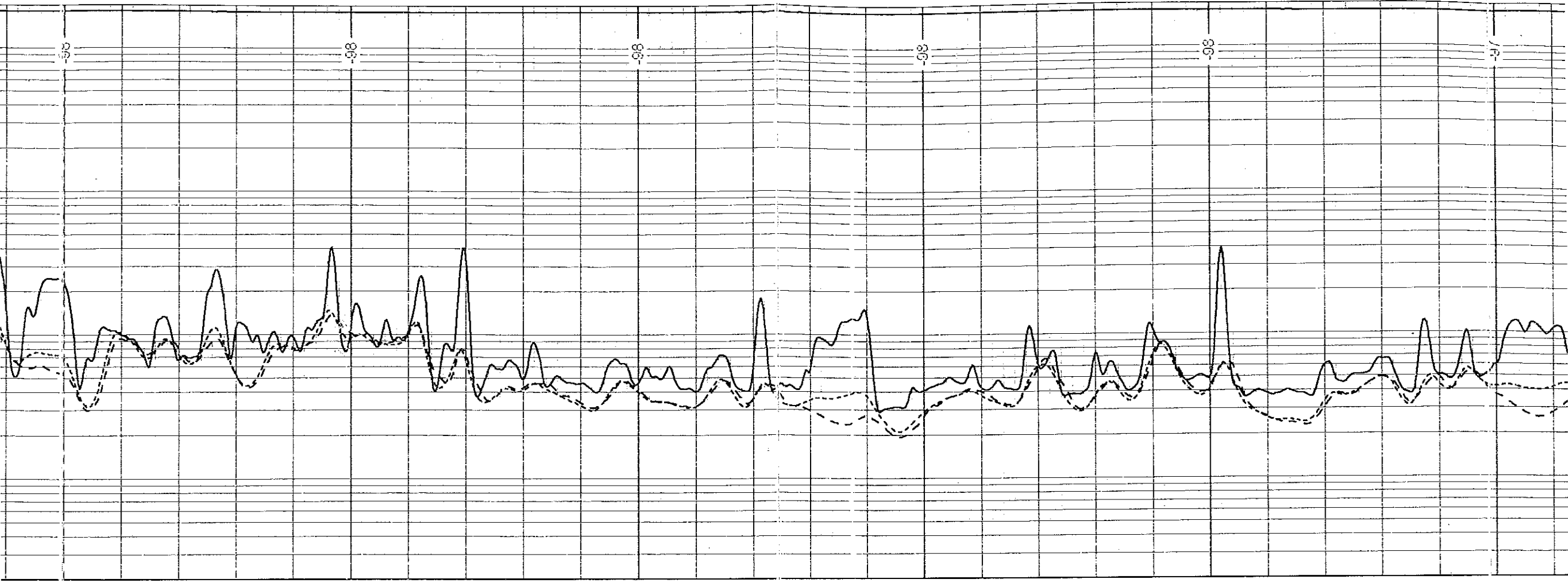




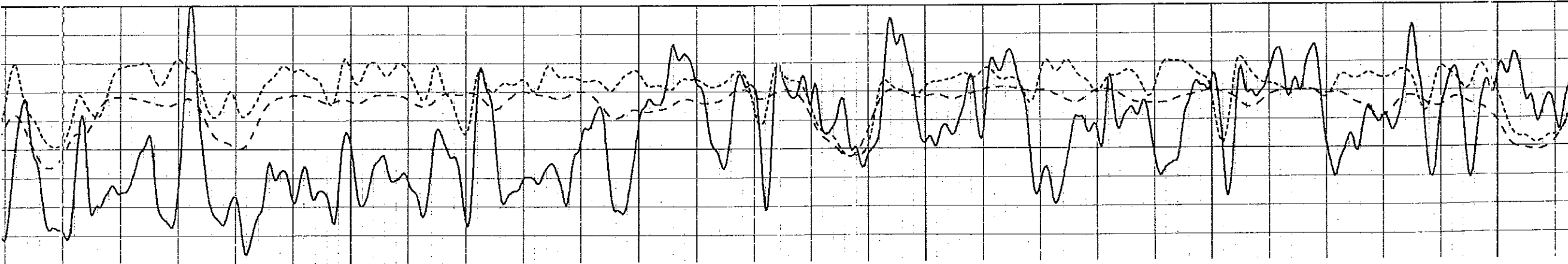
atabase File: vess_bloir_a_33.db
 ataset Pathname: dil/pass3.1
 resentation Format: dil
 ataset Creation: Thu May 05 08:37:19 2011 by Calc Open-Cased 090629
 started by: Depth in Feet scaled 1:240

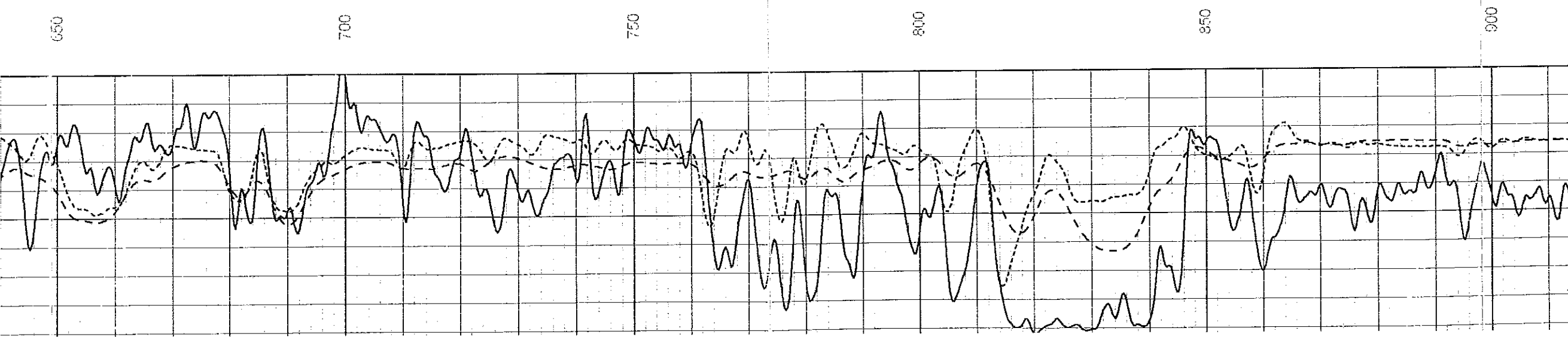
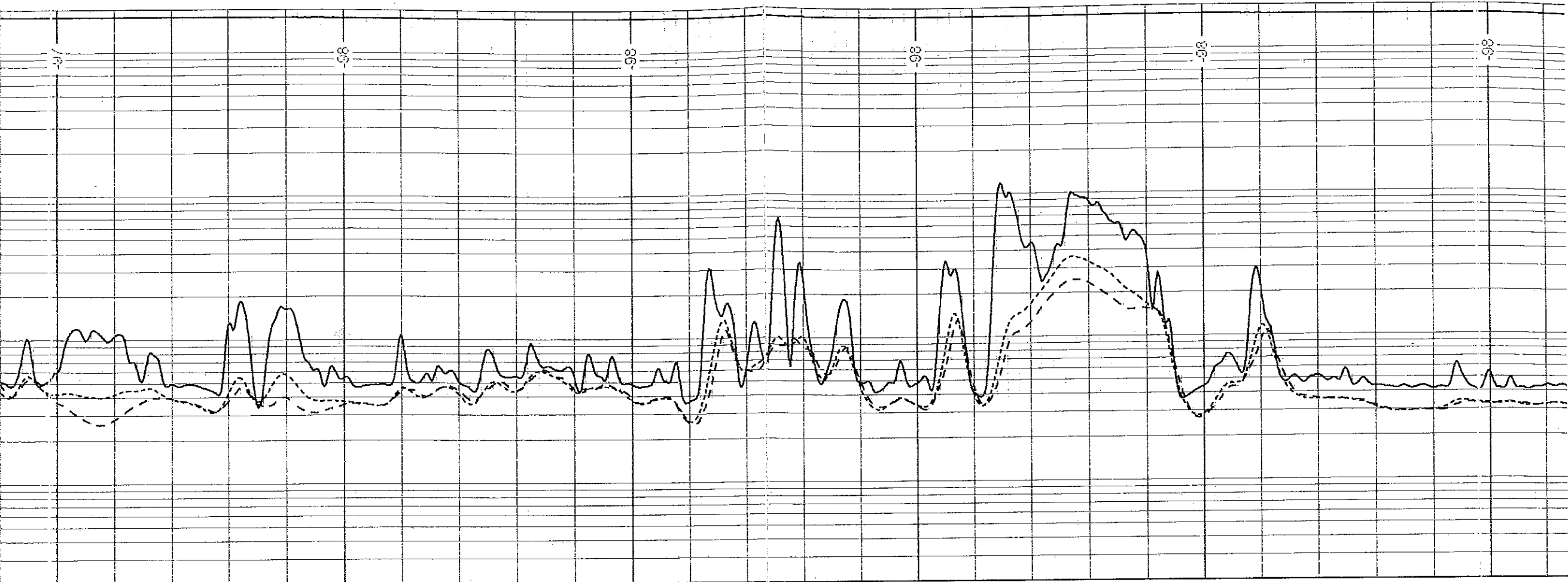


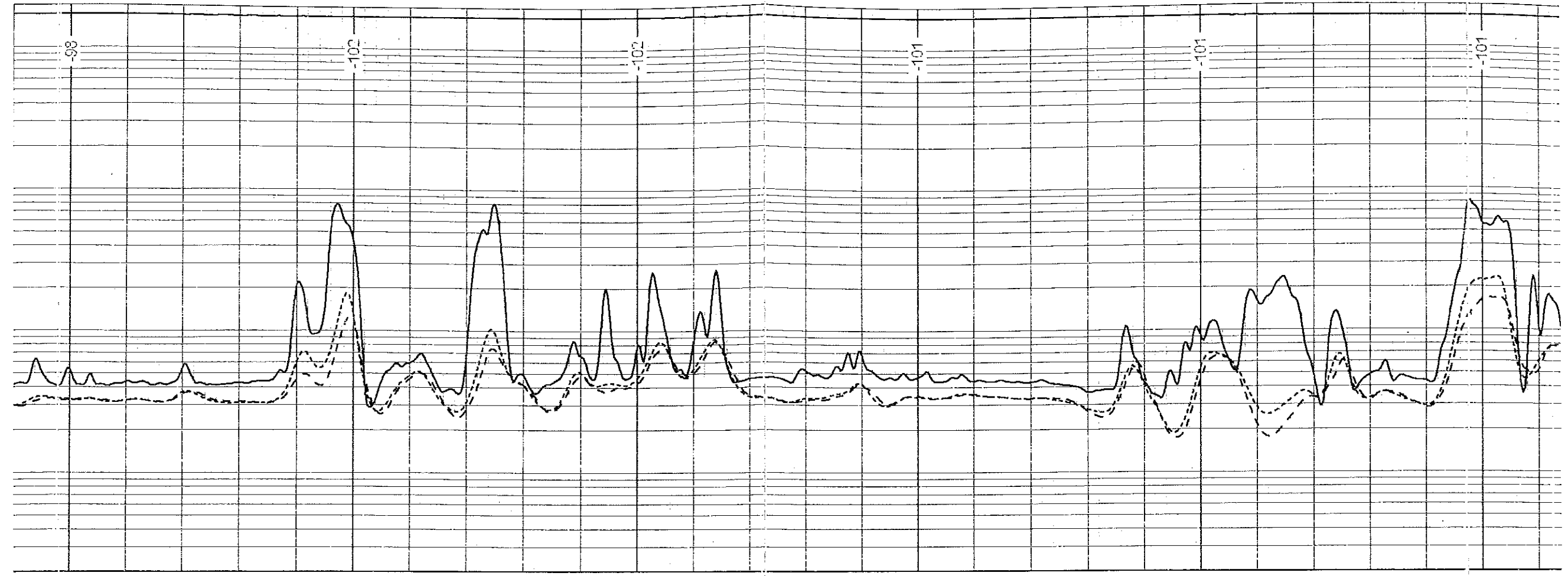




100 450 500 550 600 650







98

102

102

101

101

101

900

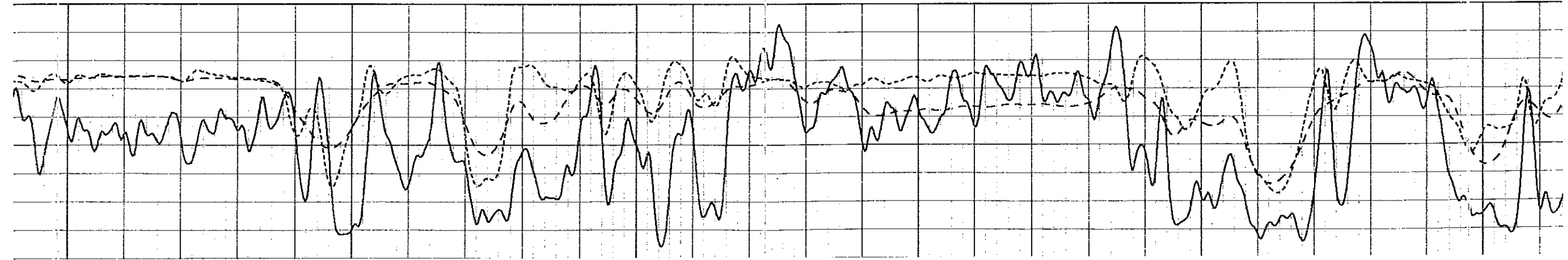
950

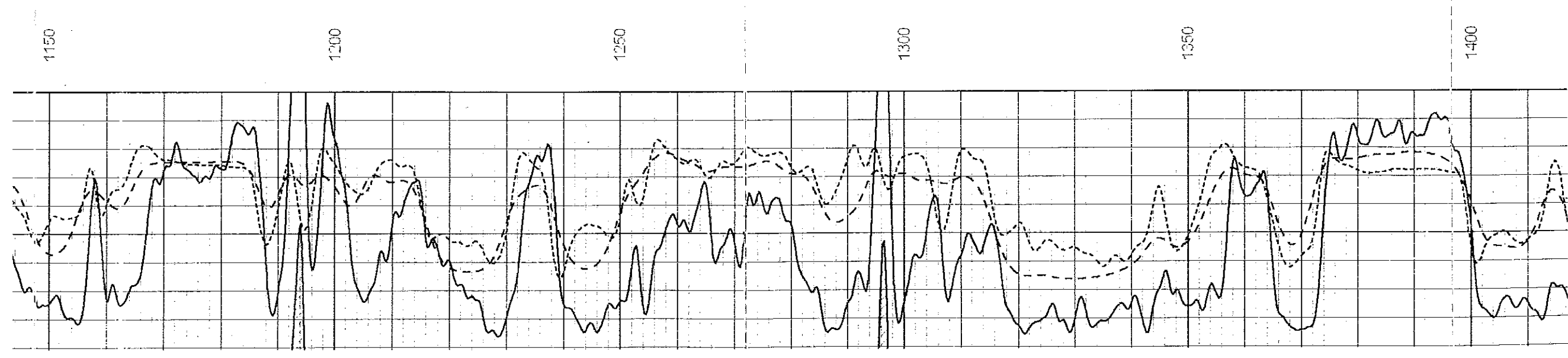
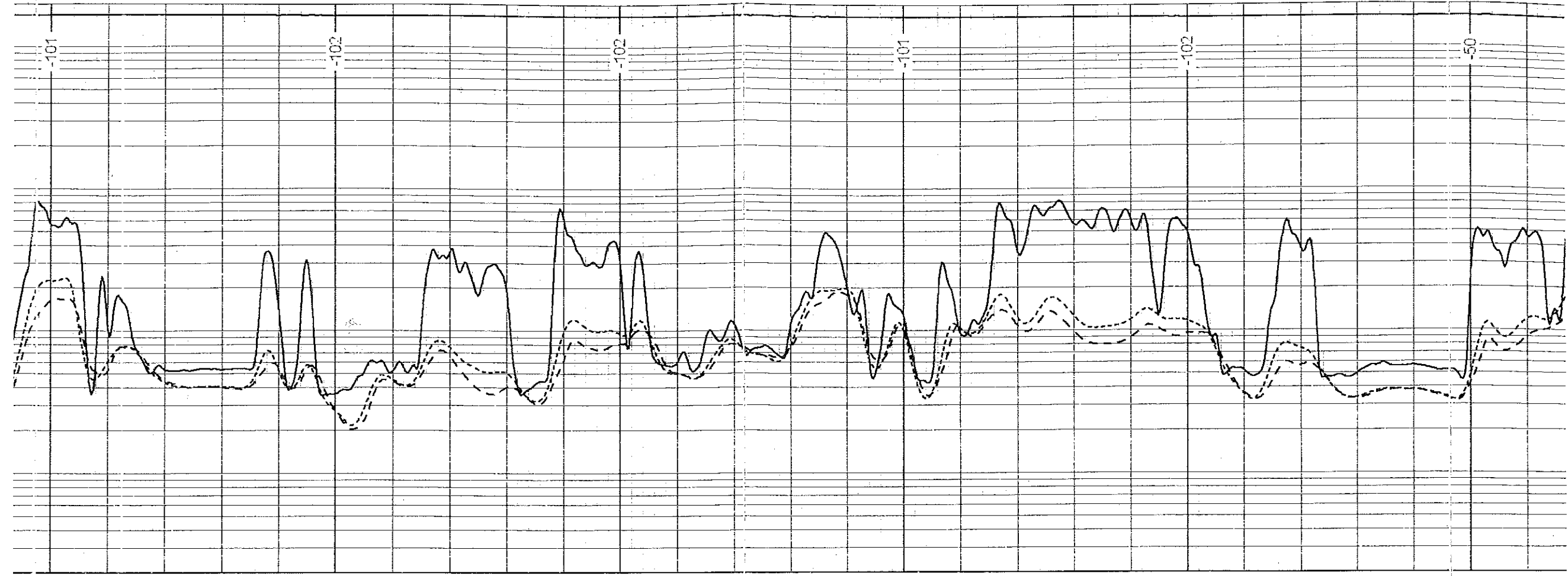
1000

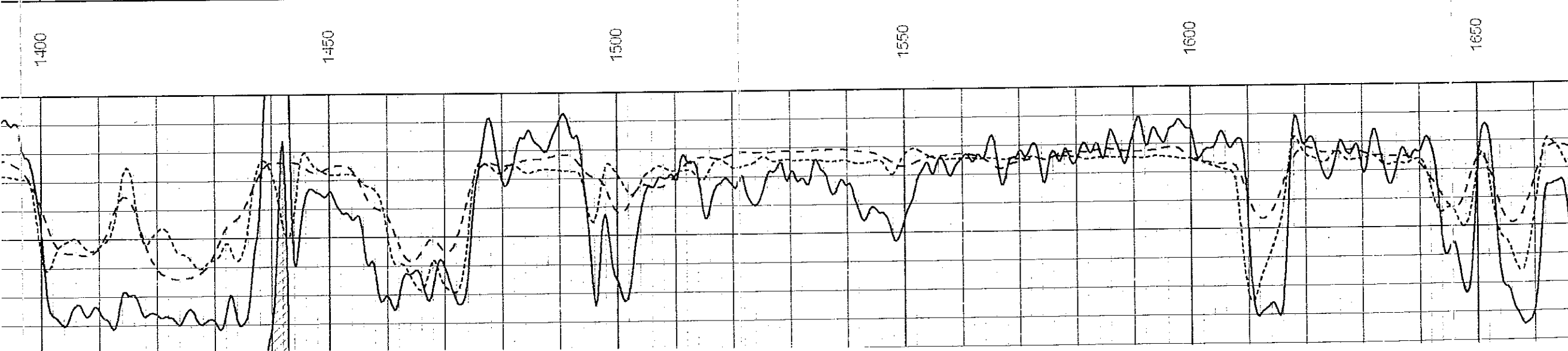
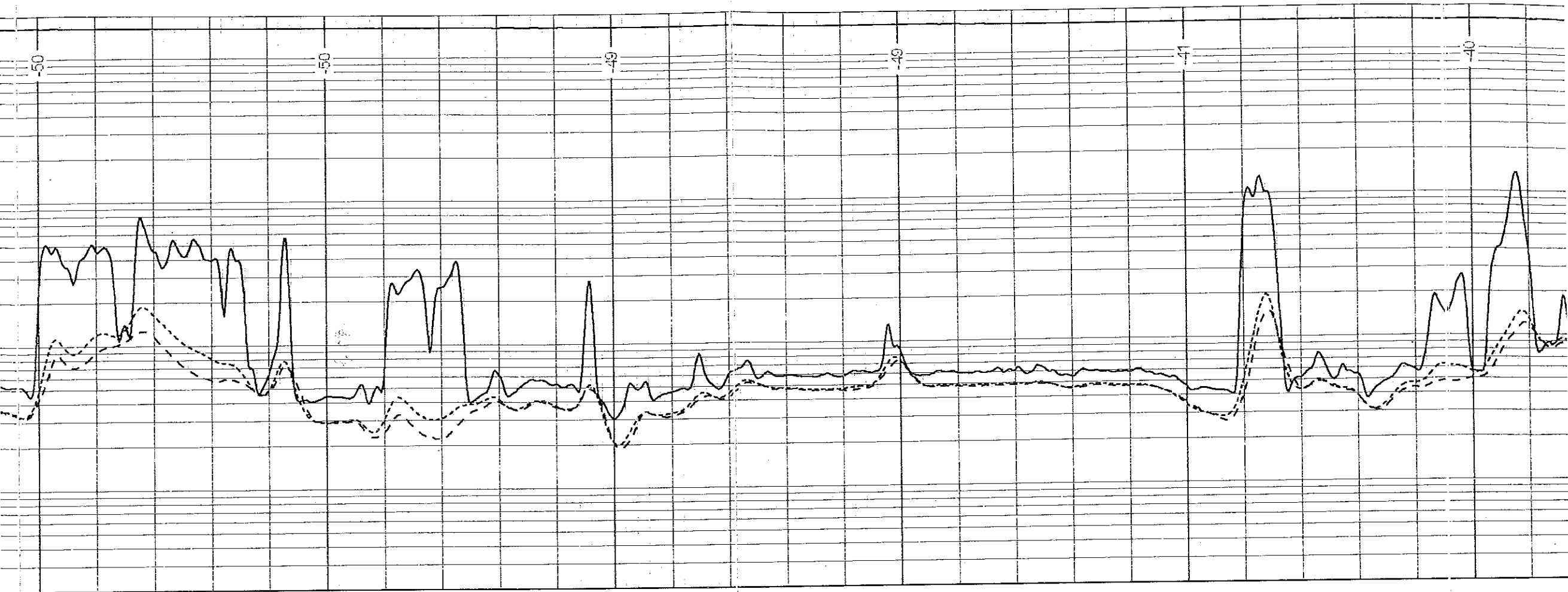
1050

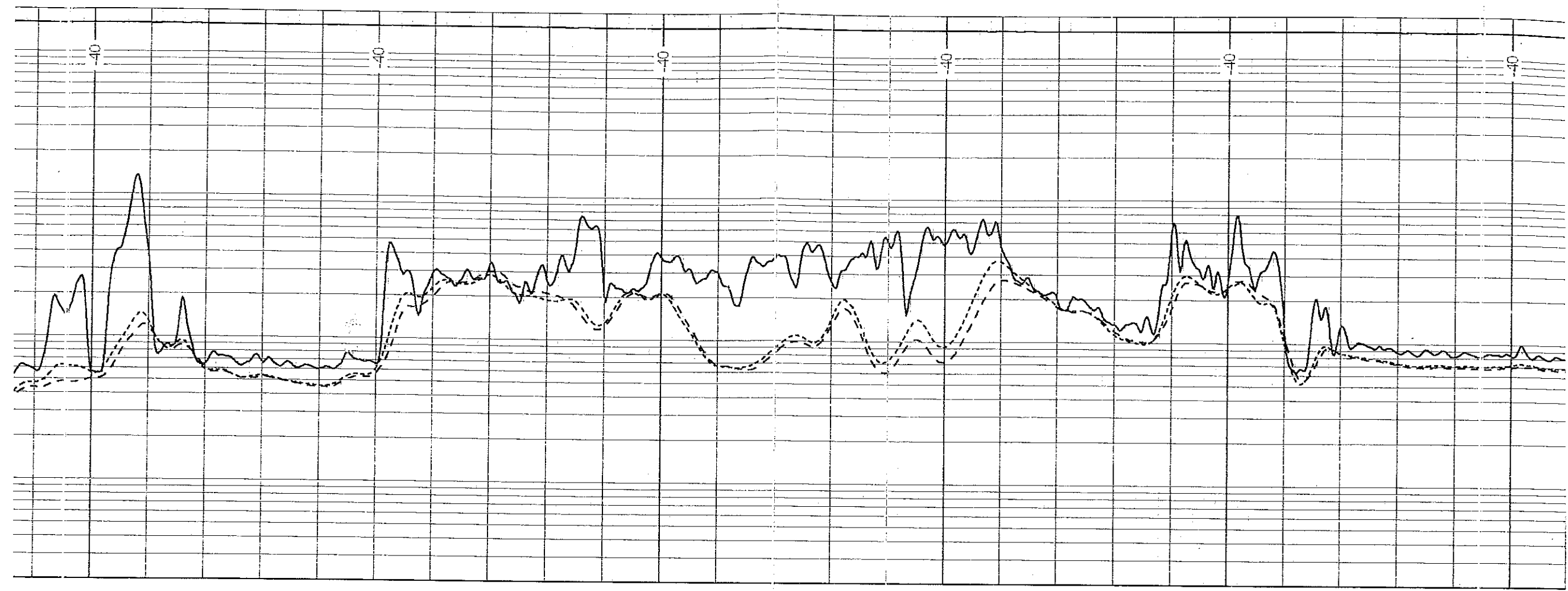
1100

1150

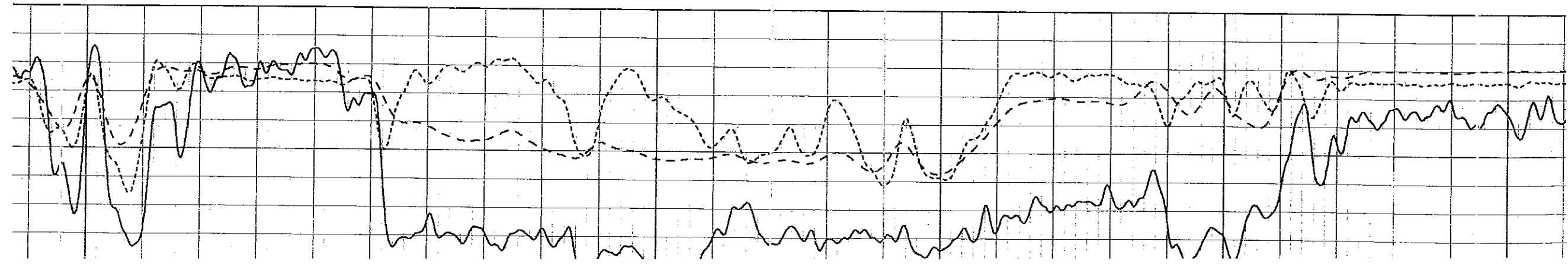


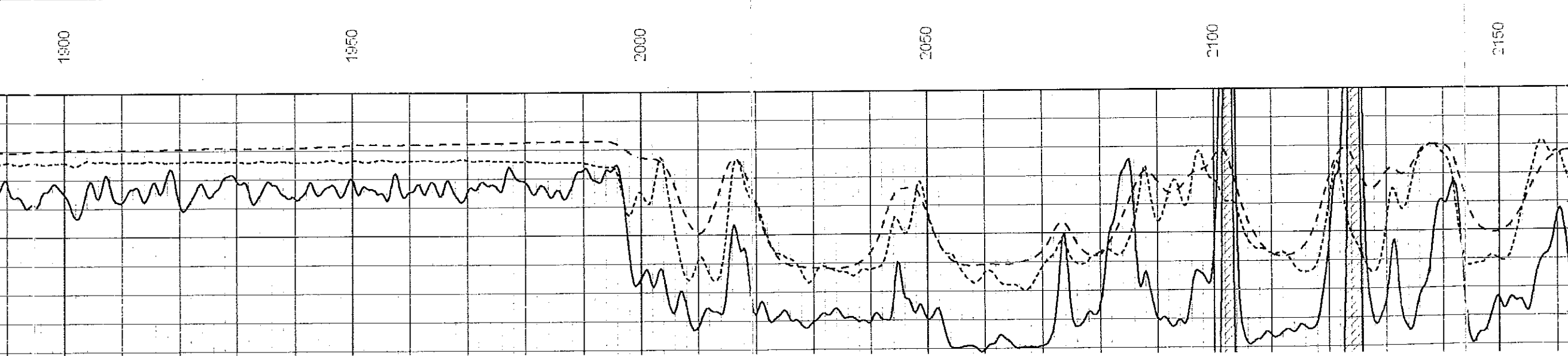
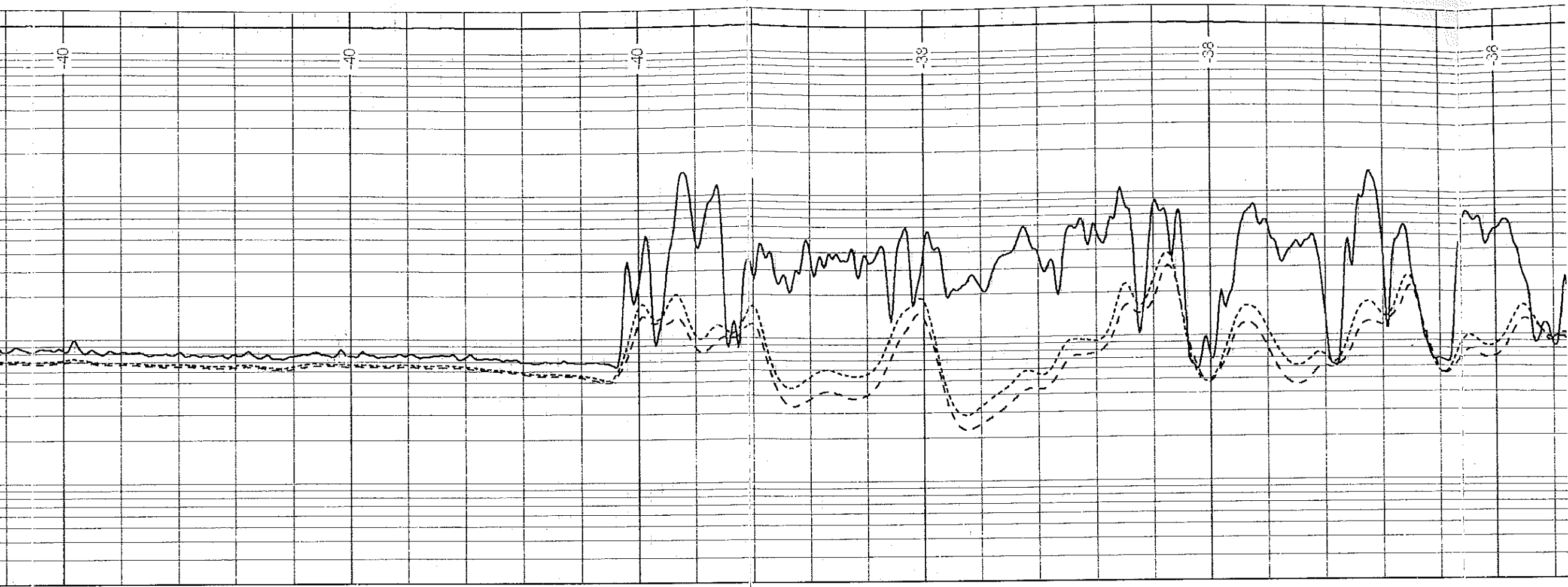


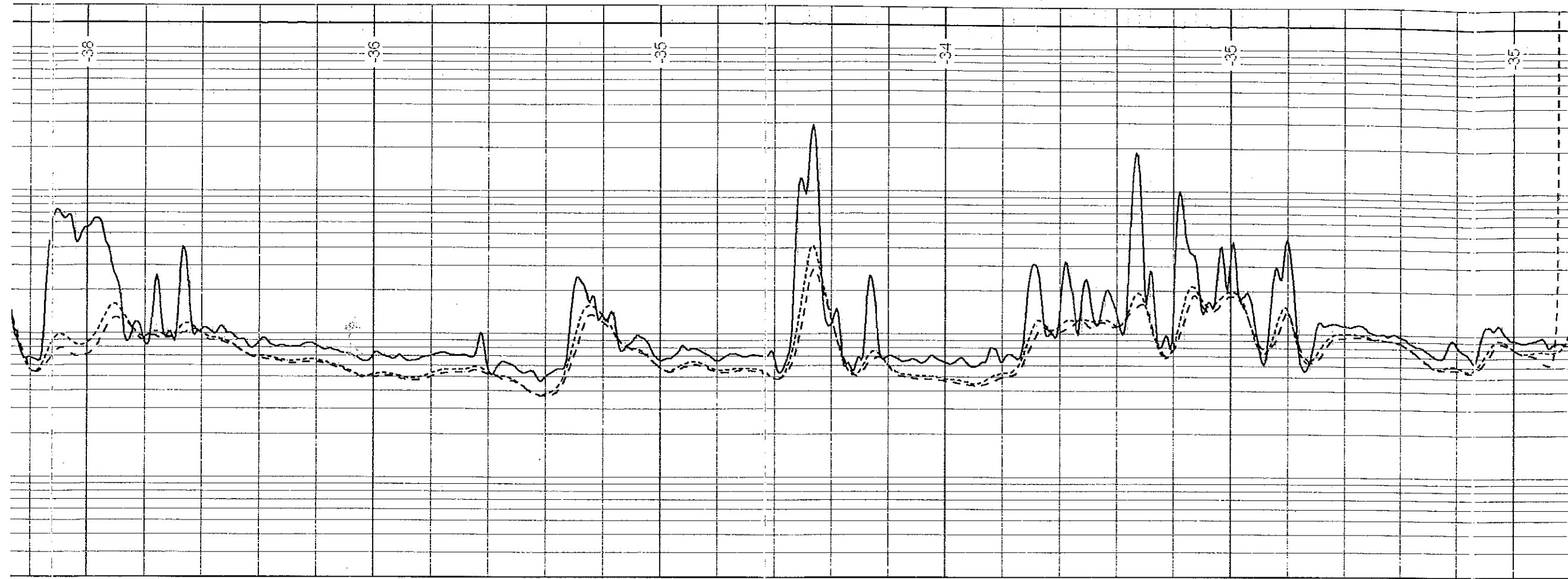




1650 1700 1750 1800 1850 1900







2150

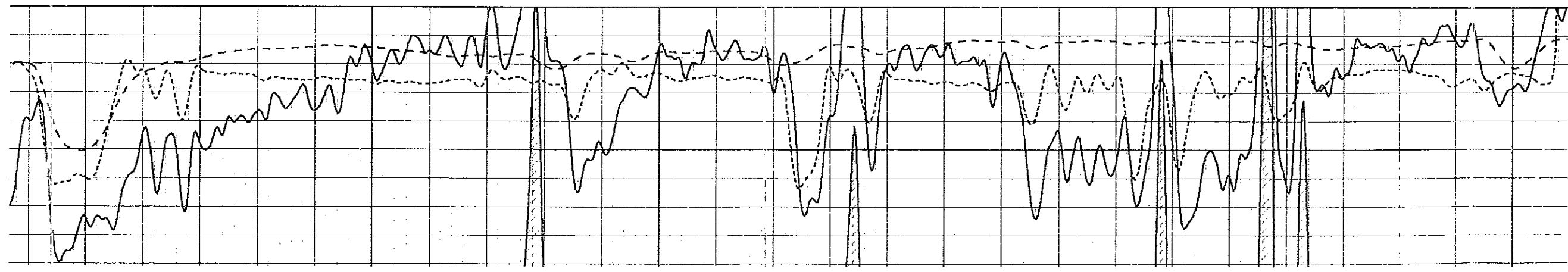
2200

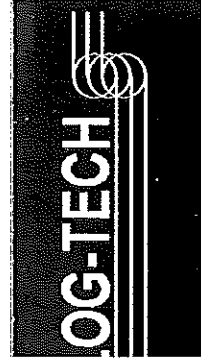
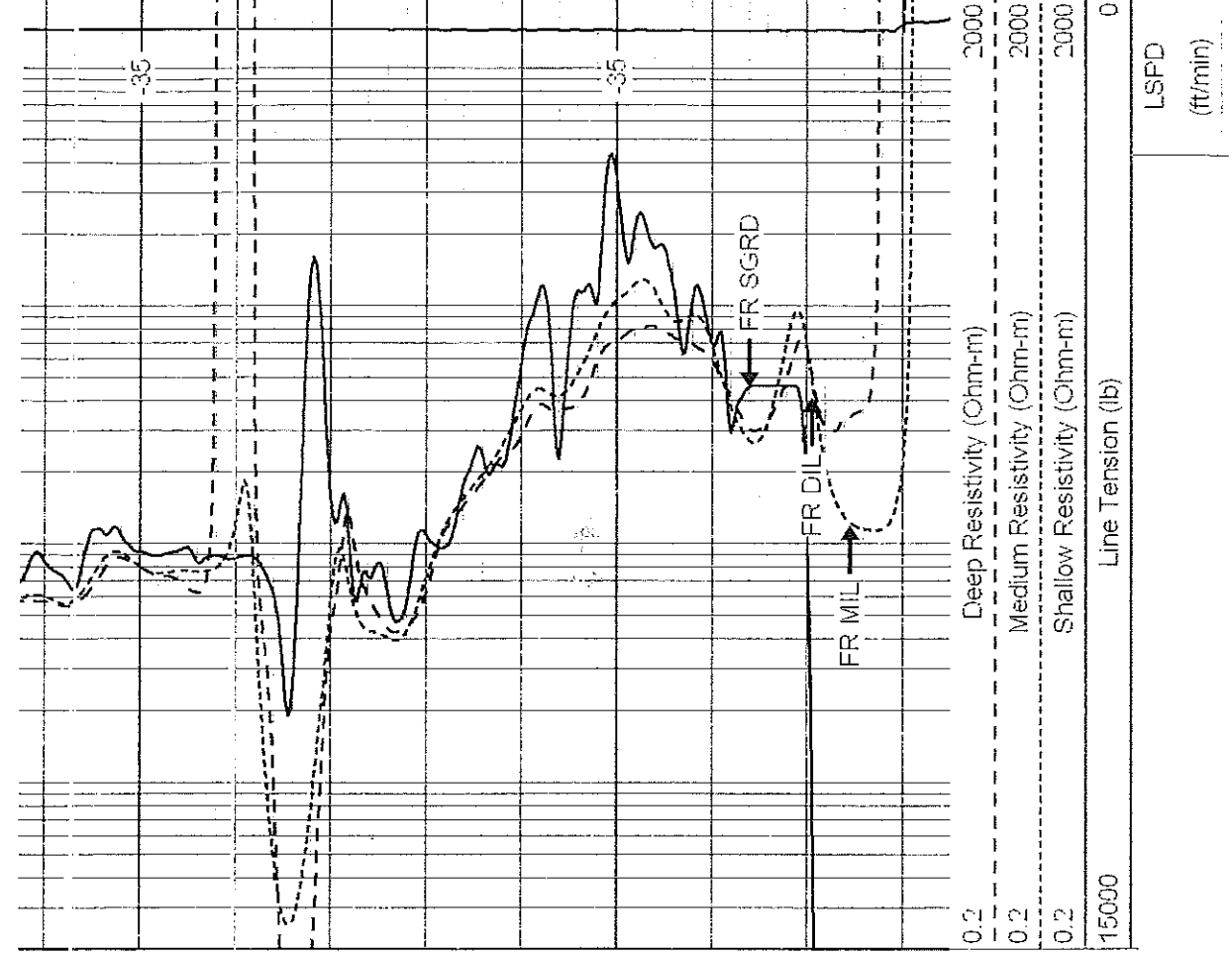
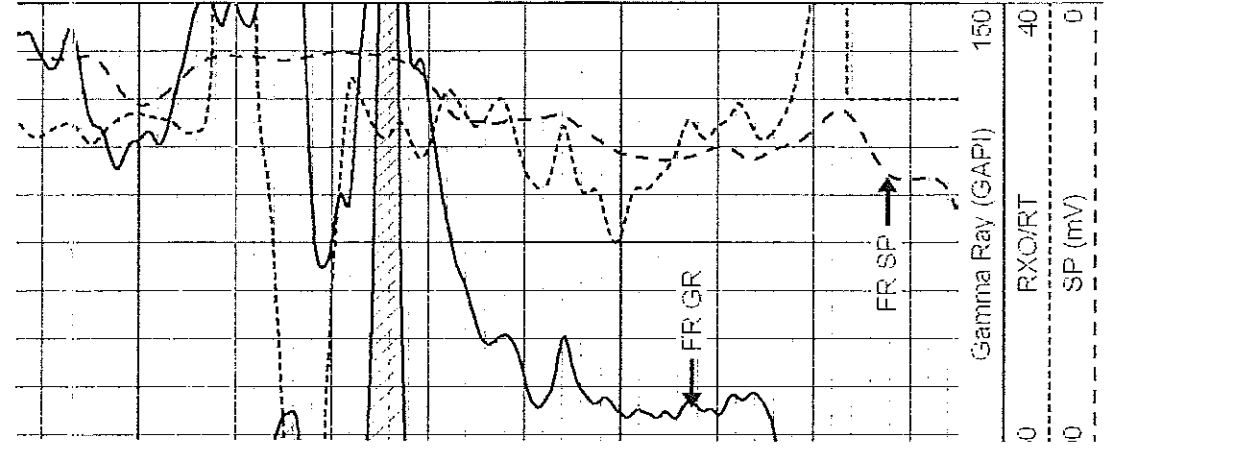
2250

2300

2350

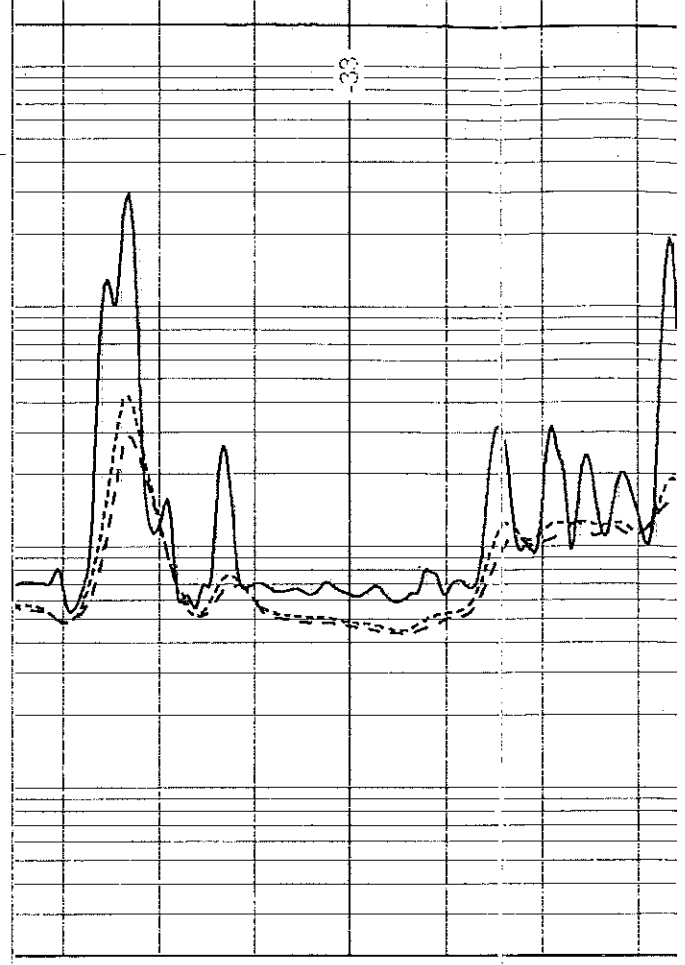
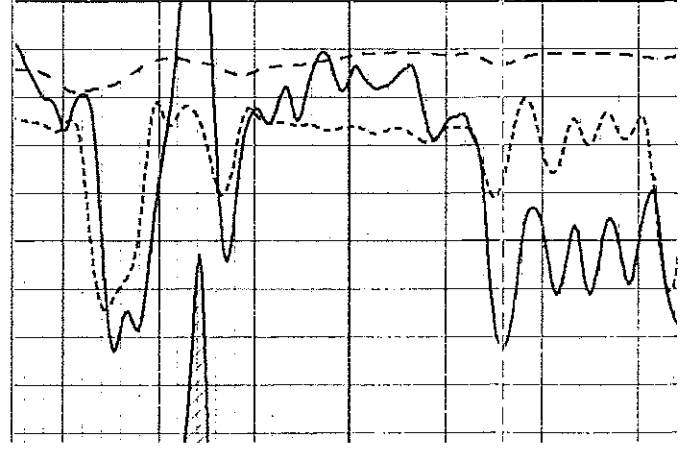
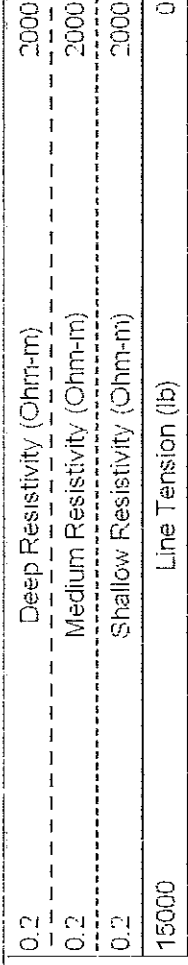
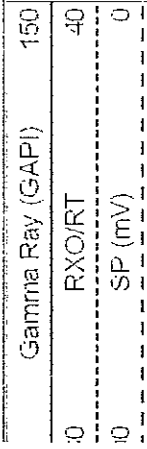
2400

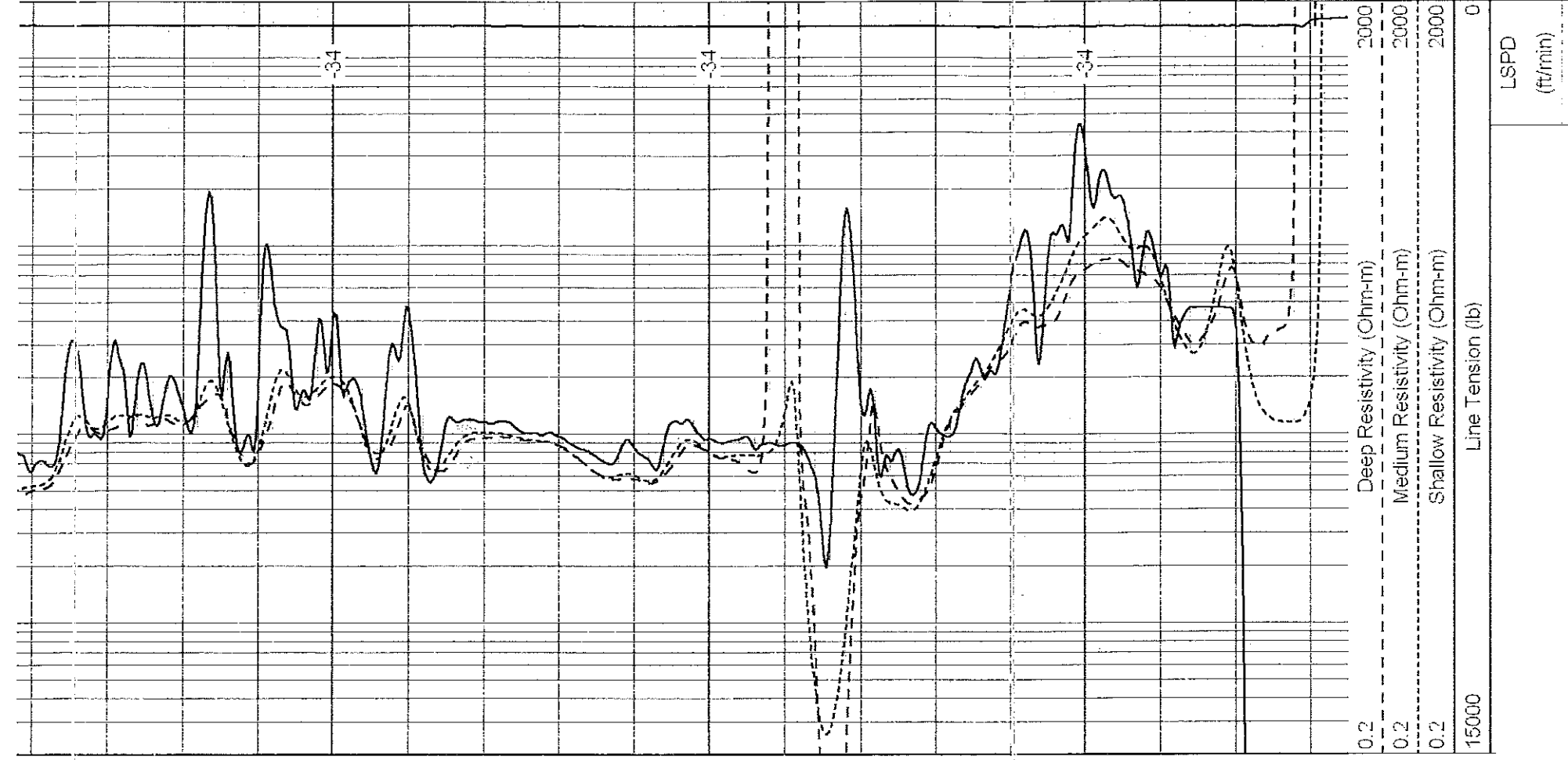
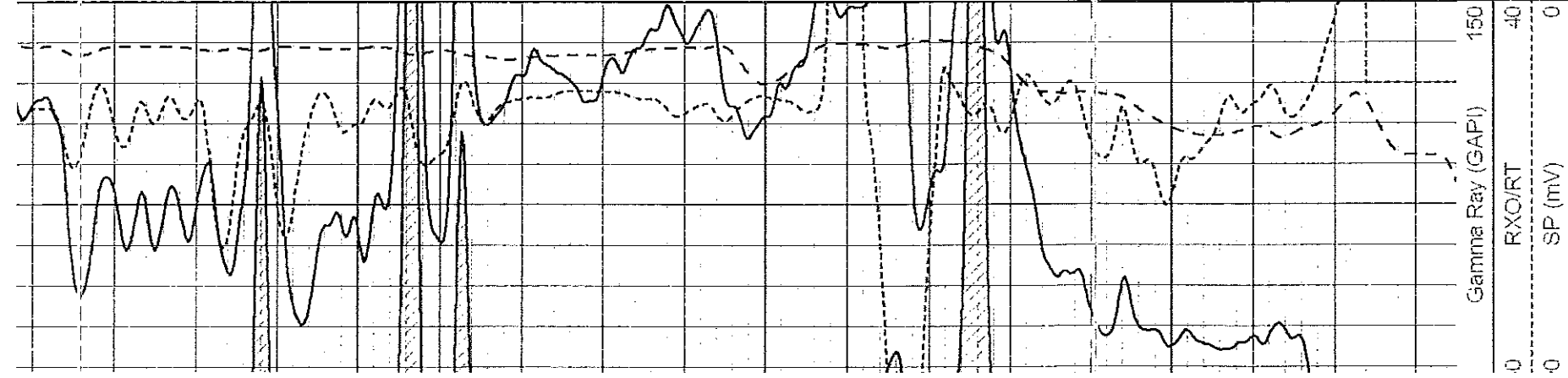




Repeat Section

Database File: vess_bloir_a_33.dlb
 Dataset Pathname: dli/pass2.1
 Presentation Format: dli
 Dataset Creation: Thu May 05 06:31:18 2011 by Calc Open-Cased 090629
 Charted by: Depth in Feet scaled 1:240





15000	Line Tension (lb)	LSPD (ft/min)
0	0	0

Calibration Report

Database File: vess_bloir_a_33.db
 Dataset Pathname: dil/pass3.1
 Dataset Creation: Thu May 05 08:37:19 2011 by Calc Open-Cased 090629

Dual Induction Calibration Report

1987-M&W

Serial-Model:
 Surface Cal Performed:

Loop	Air	Loop	References	Loop	Results
Deep	178.615	710.235	0.000	255.800	0.480
Medium	161.982	1441.110	0.000	255.800	0.390
					0.480
					0.390
					29.500
					69.500

Loop	Readings		References		Results	
	Air	Loop	Air	Loop	m	p
Deep	178.615	710.235	0.000	255.800	0.490	-29.500
Medium	161.962	1441.110	0.000	255.800	0.390	-69.500

Gamma Ray Calibration Report

Serial Number: 89-M&W
 Tool Model: M&W
 Performed: Fri Jun 19 06:11:02 2009

Calibrator Value: 1.0 GAPI

Background Reading: cps
 Calibrator Reading: cps

Sensitivity: 0.5600 GAPI/cps

